

Classification	System and Application FAQ on WinCE PAC				No.	4-001-01	
Author	Tunglu-Yu	Version	1.0.2	Date	2012/07/04	Page	1/7

How to update OS image by Exe file

Applies to:

<i>Platform</i>	<i>OS version</i>	<i>WinPAC/ViewPAC utility version</i>
<i>WP-8x3x/ XP-8x4x</i>	<i>All versions</i>	<i>All versions</i>
<i>WP-5000</i>	<i>All versions</i>	<i>All versions</i>
<i>VP-23W1/ VP-25W1</i>	<i>All versions</i>	<i>All versions</i>
<i>VP-4131</i>	<i>All versions</i>	<i>All versions</i>

To update the OS for the WinPAC and ViewPAC, you can copy the executable file to the PAC controller, run it and wait the procedure to finish.

This procedure will reset the registry to default settings, before you update to OS, please record the settings in WinPAC/ ViewPAC Utility, and backup your files and the content in \System_Disk to \Micro_SD.

Please be careful not to turn off the PAC controller when the OS update is processing. If the update is cancelled before completion, the PAC may be damaged and may require servicing or exchange.

Now, close all other application programs and start to upgrade the OS.

Before updating OS

1. You need the following devices:

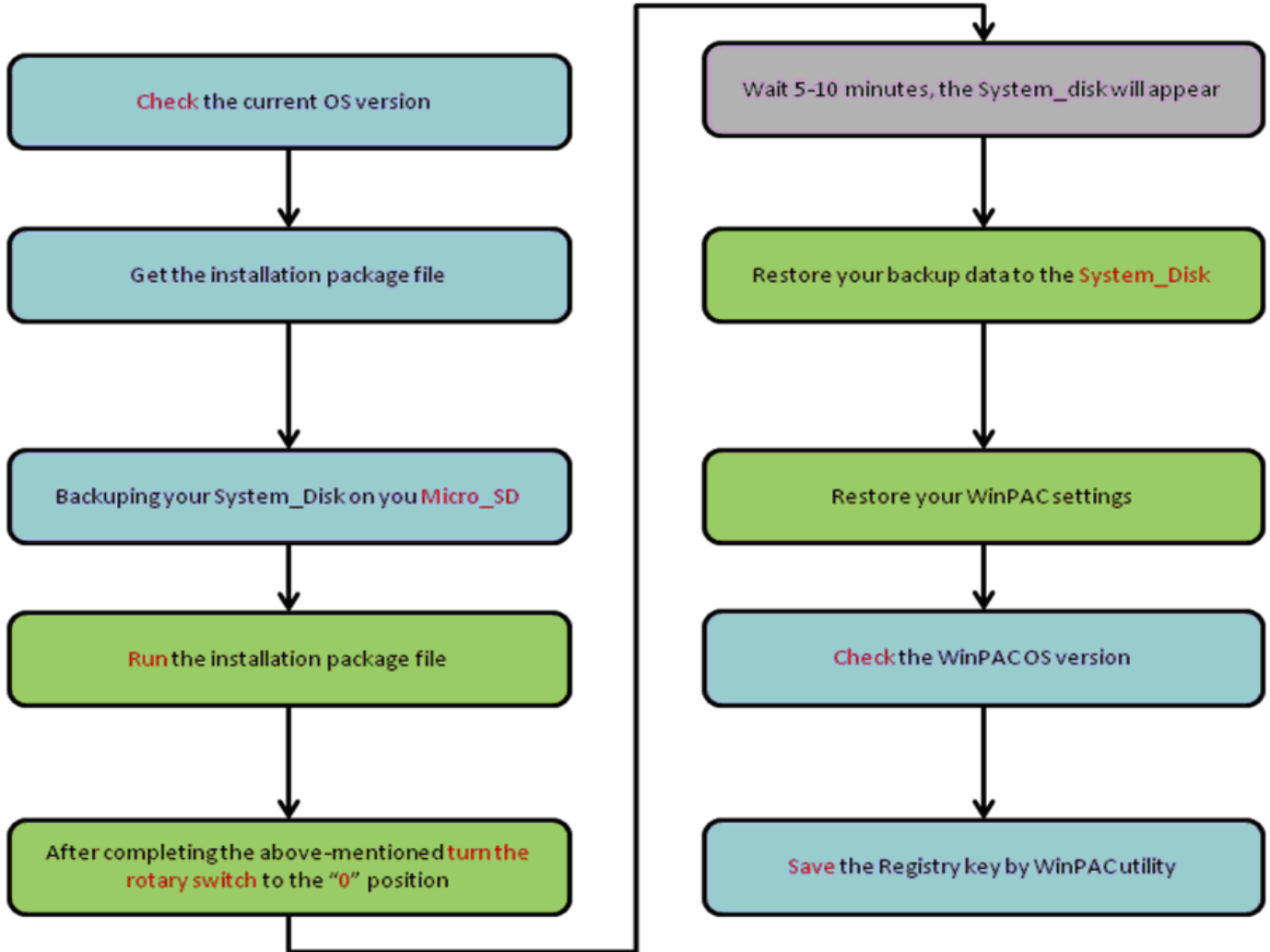
- Monitor and cable the connect to the WinPAC
- USB Hub
- USB Mouse
- USB Keyboard
- Micro_SD

2. Run the WinPAC Utility (or ViewPAC Utility) and record all the settings in it.

3. Backup your files in \System_Disk to \Micro_SD.

Classification	System and Application FAQ on WinCE PAC				No.	4-001-01	
Author	Tunglu-Yu	Version	1.0.2	Date	2012/07/04	Page	2/7

The procedure graph of OS Updates.



Classification	System and Application FAQ on WinCE PAC				No.	4-001-01	
Author	Tunglu-Yu	Version	1.0.2	Date	2012/07/04	Page	3/7

Step 1: Get the executable OS update file from the following position, and copy it to \System_Disk or \MicroSD:

WP-8x4x: http://ftp.icpdas.com/pub/cd/winpac/napdos/wp-8x4x_ce50/os_image/update_from_file/

WP-8x3x: http://ftp.icpdas.com/pub/cd/winpac/napdos/wp-8x3x_ce50/os_image/update_from_file/

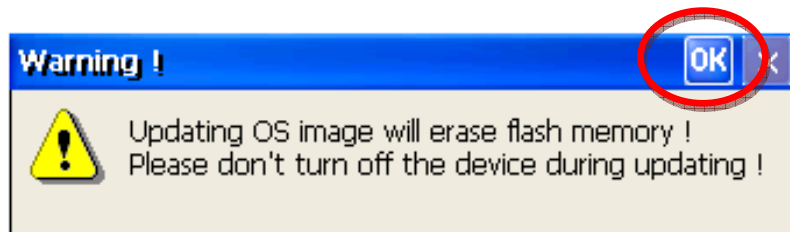
WP-5000: http://ftp.icpdas.com/pub/cd/winpac/napdos/wp-5000_ce50/os_image/update_from_file/

VP25W1: http://ftp.icpdas.com/pub/cd/winpac/napdos/vp-2000_ce50/os_image/vp-25w1/update_from_file/

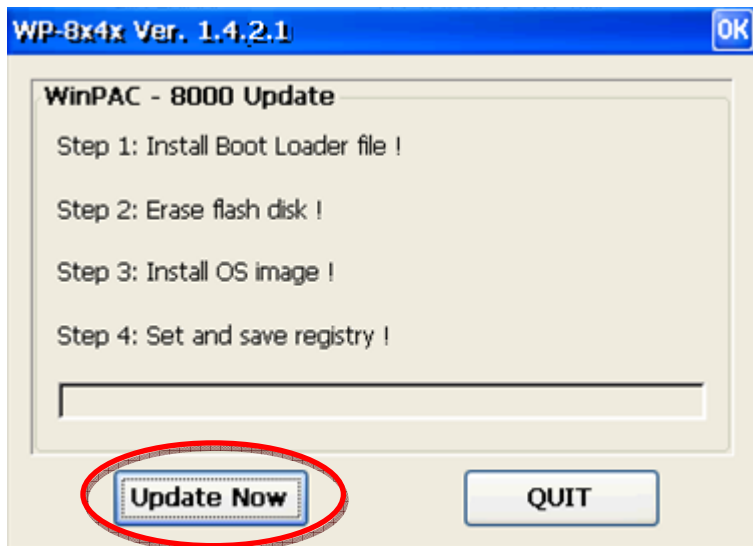
VP23W1: http://ftp.icpdas.com/pub/cd/winpac/napdos/vp-2000_ce50/os_image/vp-23w1/update_from_file/

VP4131 : http://ftp.icpdas.com/pub/cd/winpac/napdos/vp-4000_ce50/os_image/vp-413x/update_from_file/

Step 2: Run the installation package file and press OK on the Warning message box.

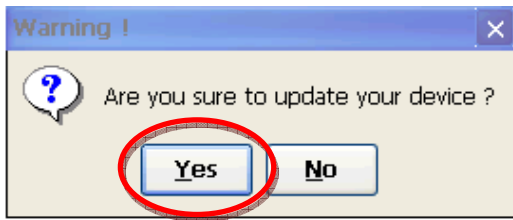


Step 3: Press the Update Now button



Classification	System and Application FAQ on WinCE PAC				No.	4-001-01	
Author	Tunglu-Yu	Version	1.0.2	Date	2012/07/04	Page	4/7

Step 4: Press Yes



This installation procedure will perform the following tasks:

i. Install boot loader file

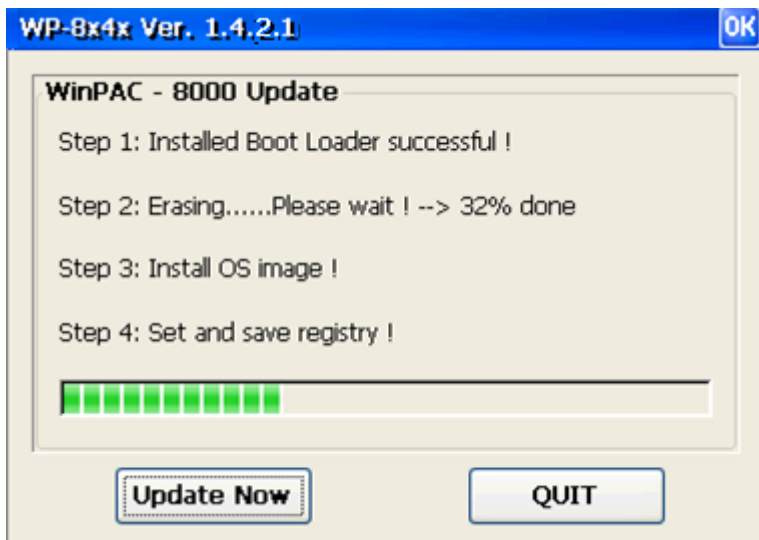


Be careful, if the boot loader broken off in this step and cannot restart in safe mode, you have to send it back to us.

ii. Erase OS flash

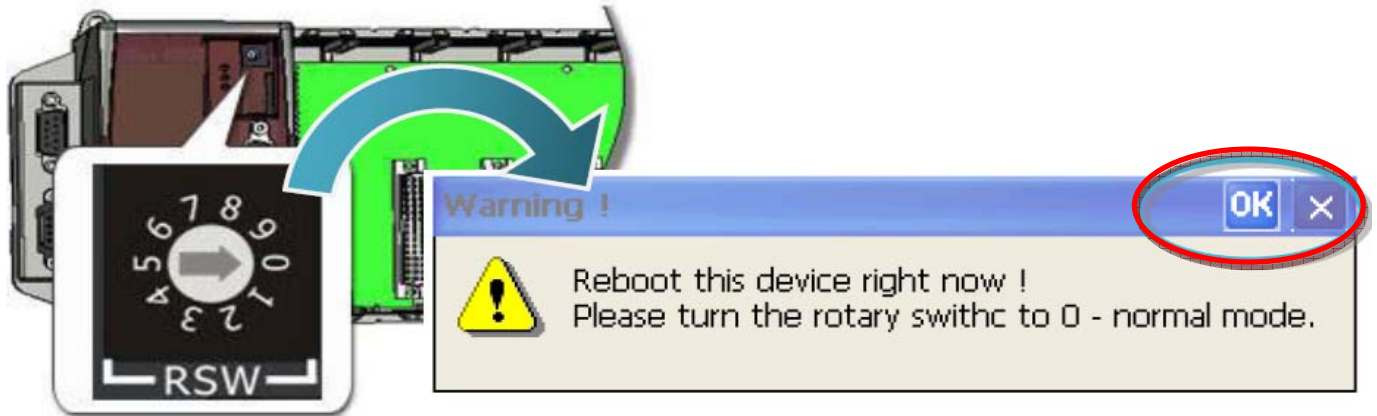
iii. Install OS image

iv. Set and save registry



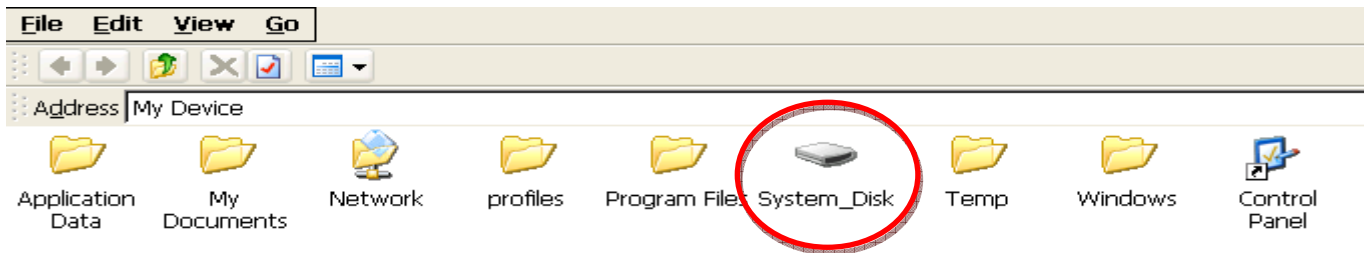
Classification	System and Application FAQ on WinCE PAC				No.	4-001-01	
Author	Tunglu-Yu	Version	1.0.2	Date	2012/07/04	Page	5/7

Step 5: After the “Warning !” dialog box appears, you must first turn the rotary switch to the “0” position and then click the “OK” button.



Step 6: Make sure the System_disk folder appear in “My Device”.

(If you update OS from an older-than-old version to the latest, after reboot, please wait 5-10 minutes, the OS will format the System_Disk and the monitor display will become white or black at this moment.)



Step 7: Restore your backup data to the System_Disk.

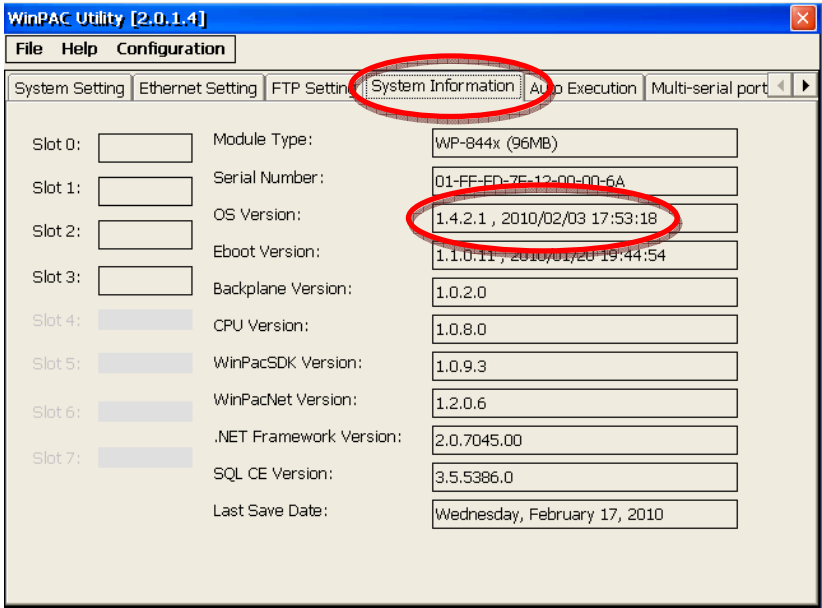
(When you install the OS that release date after AD 2013, please reboot the WinPAC again, the OS will automatically restore files in the System_disk.)

Step 8: Restore your PAC settings.

Start the WinPAC Utility on the desktop, and restore all settings (Example below).

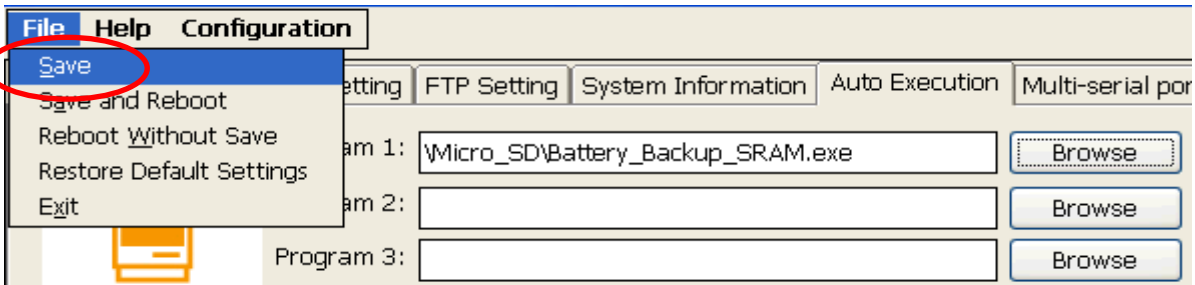
Classification	System and Application FAQ on WinCE PAC				No.	4-001-01	
Author	Tunglu-Yu	Version	1.0.2	Date	2012/07/04	Page	6/7

Step 9: Start the WinPAC Utility, and check the OS version on the “System Information” tab.

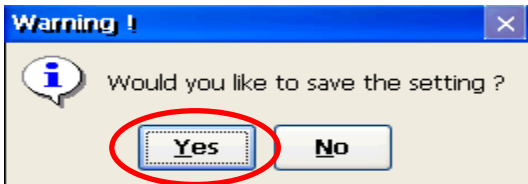


Step 10: Save your WinPAC/ViewPC settings and registry key.

10.1. Click the menu “File”->”Save” menu option.



10.2. Click the “Yes” button.



Classification	System and Application FAQ on WinCE PAC				No.	4-001-01	
Author	Tunglu-Yu	Version	1.0.2	Date	2012/07/04	Page	7/7

Revision History

Revision	Date	Description
1.0.2	2013/07/04	NEW: Added support information for WP-5000 and VP-4131.
1.0.0	2010/02/12	Initial release