

Classification	System and Application FAQ on WinCE PAC				No.	7-001-00	
Author	Tunglu-Yu	Version	1.0.1	Date	2013/05/06	Page	1/7

How to fix the System_Disk exception error

Applies to:

Platform	OS version	WinPAC/ViewPAC utility version
WP-8x3x	V1.6.1.1 and before	All versions
WP-8x4x	V1.3.0.1 and before	All versions
VP-25W1	V1.1.1.0 and before	All versions
VP-23W1	V2.2.0.0 and before	All versions
WP-5000	V2.2.0.0 and before	All versions

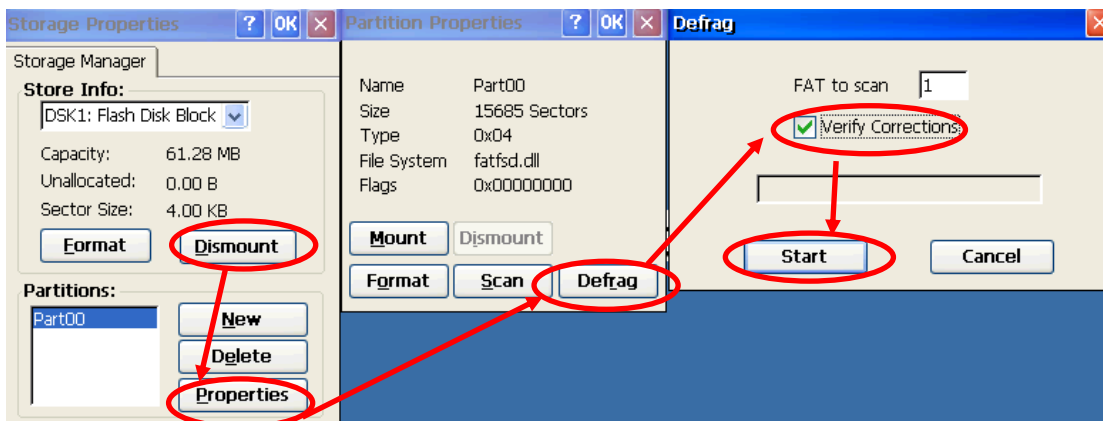
The reason for the System_Disk exception error:

If the system is **defragmenting** (*Note1) the System_Disk, and the device is turned off or loses power suddenly, the **File allocation table (FAT)** possibly cause damage to the System_Disk and will result the exception error similar to that described below.

Situations that cause a System_Disk exception error:

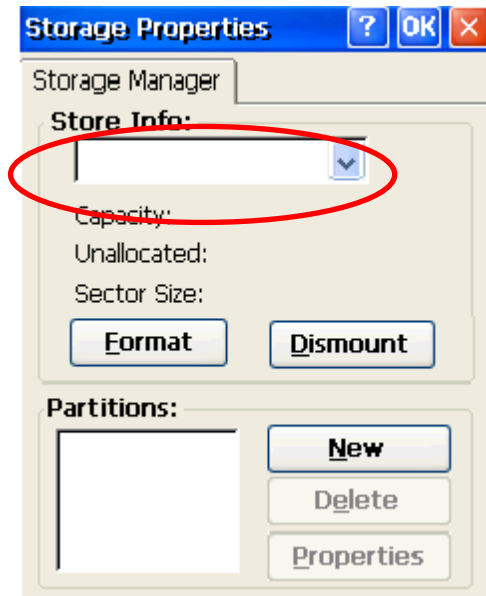
Situation:

1. Locate the error that occurs when accessing files on the System_Disk:
 - Cannot save or copy files to the System_Disk.
 - Cannot delete files.
 - The file disappears after be copied to the System_Disk.
 - All files disappear from the System_Disk.
2. The capacity of the System_Disk that has been used is different to the actual capacity that has been used.
3. After using the **defrag** function in the Storage Manager, an exception occurs:
Click Control Panel->Storage Manager->Dismount->Properties->Defrag->Verify Corrections->Start.



Classification	System and Application FAQ on WinCE PAC				No.	7-001-00	
Author	Tunglu-Yu	Version	1.0.1	Date	2013/05/06	Page	2/7

4. The System_Disk disappears from “my device” and the ”DSK1: Flash Disk Block” item also disappears from the Storage Manager.



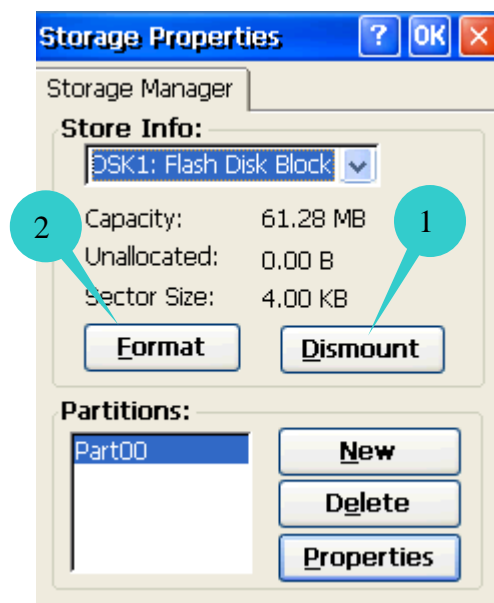
Solution:

For situations 1、2、3 solution 1 can be used. For situation 4, use solution 2 to rebuild the **File allocation table (FAT)** for the files on the System_disk.

Solution 1:

Click Control Panel->Storage Manager->Dismount->Format.

After formatting, make sure the statue of System_disk is normal. If the statue of System_disk is not normal, use solution 2.



Classification	System and Application FAQ on WinCE PAC				No.	7-001-00	
Author	Tunglu-Yu	Version	1.0.1	Date	2013/05/06	Page	3/7

Solution 2:

Execute the clearflash_16bit_dataflash.exe program and click the clear button.



The clearflash_16bit_dataflash.exe can be found at:

ftp://ftp.icpdas.com.tw/pub/cd/winpac/napdos/wp-8x4x_ce50/misc/clearflash/intel/clearflash_16bit_dataflash.exe

Wait a few minutes for the System_Disk to be erased, and then reboot the WinPAC after erasing has completed.

```

File Edit Help
Bytes Per Block ..... 0x20000
Number of Blocks ..... 0xf8
Flash Type ..... 0x1
Data Bytes Per Sector .. 0x200
Sectors Per Block ..... 0x100

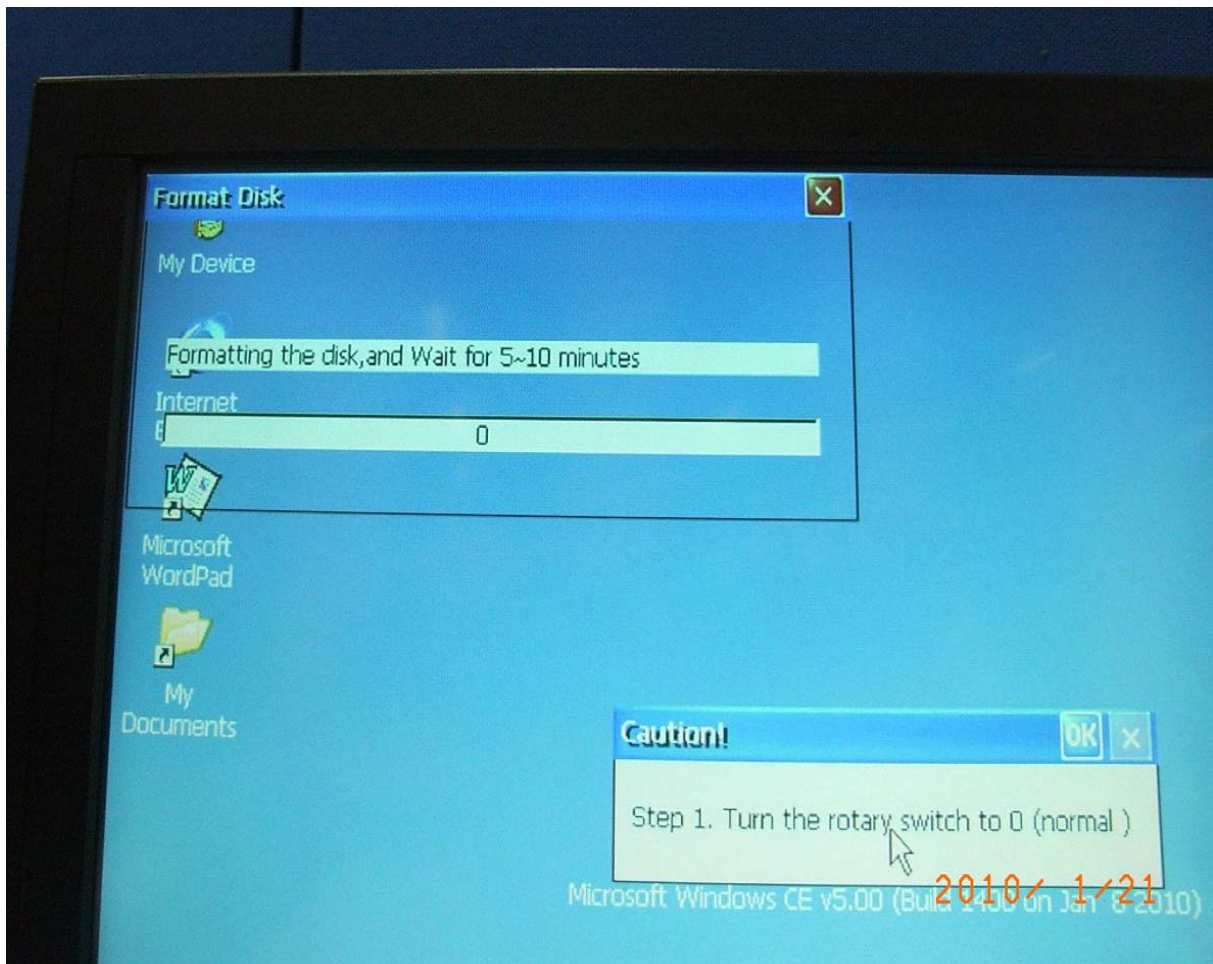
@w<1> <2> <3> <4> <5> <6> <7> <8>
@w<9> <a> <b> <c> <d> <e> <f> <10>
@w<11> <12> <13> <14> <15> <16> <17> <18>
@w<19> <1a> <1b> <1c> <1d> <1e> <1f> <20>
@w<21> <22> <23> <24> <25> <26> <27> <28>
@w<29> <2a> <2b> <2c> <2d> <2e> <2f> <30>
@w<31> <32> <33> <34> <35> <36> <37> <38>
@w<39> <3a> <3b> <3c> <3d> <3e> <3f> <40>
@w<41> <42> <43> <44> <45> <46> <47> <48>
@w<49> <4a> <4b> <4c> <4d> <4e> <4f> <50>
@w<51> <52> <53> <54> <55> <56> <57> <58>
@w<59> <5a> <5b> <5c> <5d> <5e> <5f> <60>
@w<61> <62> <63> <64> <65> <66> <67> <68>
@w<69> <6a> <6b> <6c> <6d> <6e> <6f> <70>
@w<71> <72> <73> <74> <75> <76> <77> <78>
@w<79> <7a> <7b> <7c> <7d> <7e> <7f> <80>
@w<81> <82> <83> <84> <85> <86> <87> <88>
@w<89> <8a> <8b> <8c> <8d> <8e> <8f> <90>
@w<91> <92> <93> <94> <95> <96> <97> <98>
@w<99> <9a> <9b> <9c> <9d> <9e> <9f> <a0>
@w<a1> <a2> <a3> <a4> <a5> <a6> <a7> <a8>
@w<a9> <aa> <ab> <ac> <ad> <ae> <af> <b0>
@w<b1> <b2> <b3> <b4> <b5> <b6> <b7> <b8>
@w<b9> <ba> <bb> <bc> <bd> <be> <bf> <c0>
@w<c1> <c2> <c3> <c4> <c5> <c6> <c7> <c8>
@w<c9> <ca> <cb> <cc> <cd> <ce> <cf> <d0>
@w<d1> <d2> <d3> <d4> <d5> <d6> <d7> <d8>
@w<d9> <da> <db> <dc> <dd> <de> <df> <e0>
@w<e1> <e2> <e3> <e4> <e5> <e6> <e7> <e8>
@w<e9> <ea> <eb> <ec> <ed> <ee> <ef> <f0>
@w<f1> <f2> <f3> <f4> <f5> <f6> <f7> <f8>

Erase finished

```

Classification	System and Application FAQ on WinCE PAC				No.	7-001-00	
Author	Tunglu-Yu	Version	1.0.1	Date	2013/05/06	Page	4/7

After rebooting, the monitor will become **WHITE** for a while, and then reboot your WinPAC **again**. Formatting of the System_Disk will take 5~10 minute.



Suggestion:

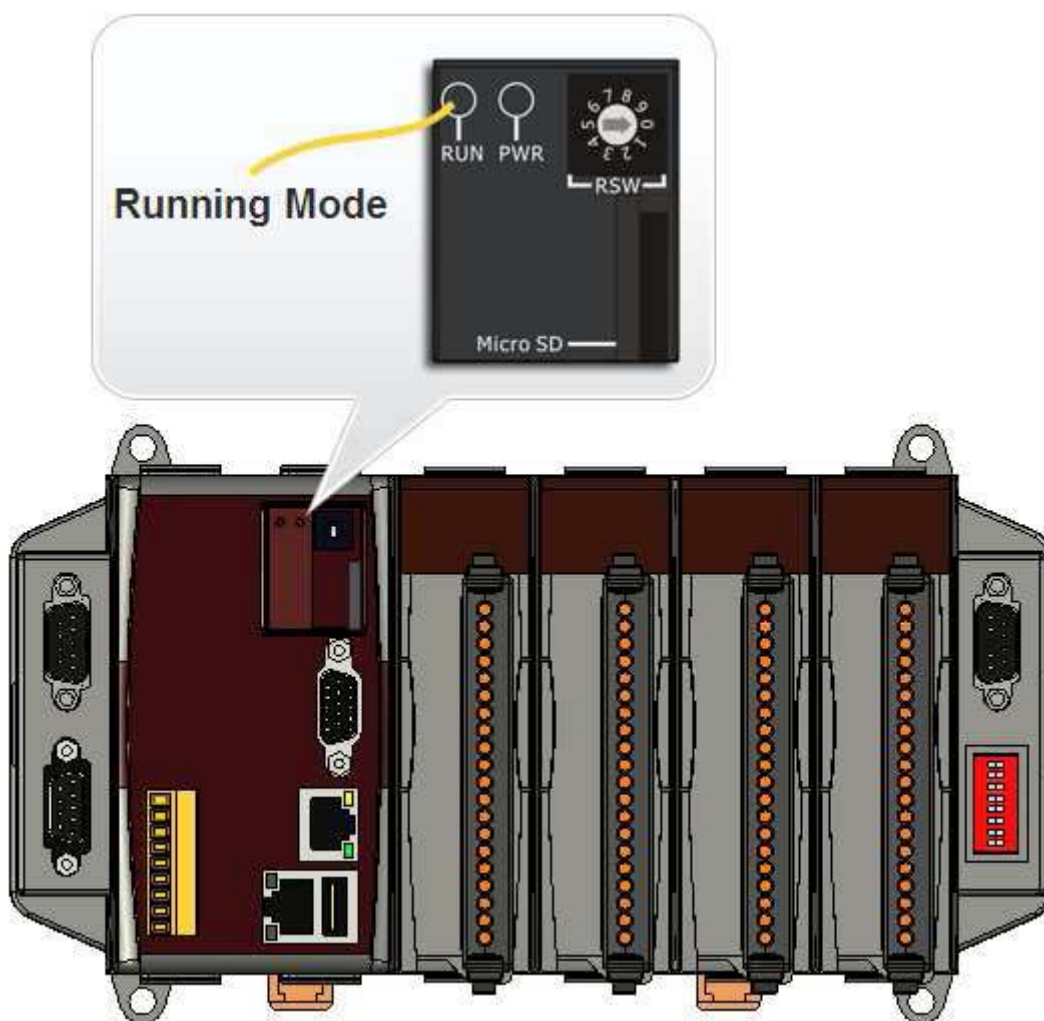
1. Do not frequently access the files on the System_Disk. If the System_Disk is going to be **defragmented**. Do not turn off the device or do not cause power to be lost suddenly, the **File allocation table (FAT)** will possibly be damaged. If you still want to frequently access the files on the System_Disk, do not turn off the device when RUN led is blinking.
2. Use the Backup_utility to back up the System_Disk.

Classification	System and Application FAQ on WinCE PAC				No.	7-001-00	
Author	Tunglu-Yu	Version	1.0.1	Date	2013/05/06	Page	5/7

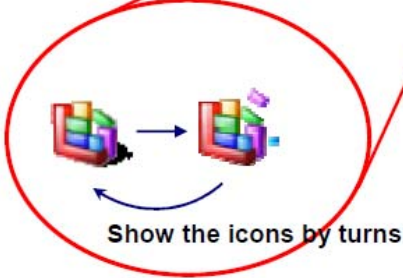
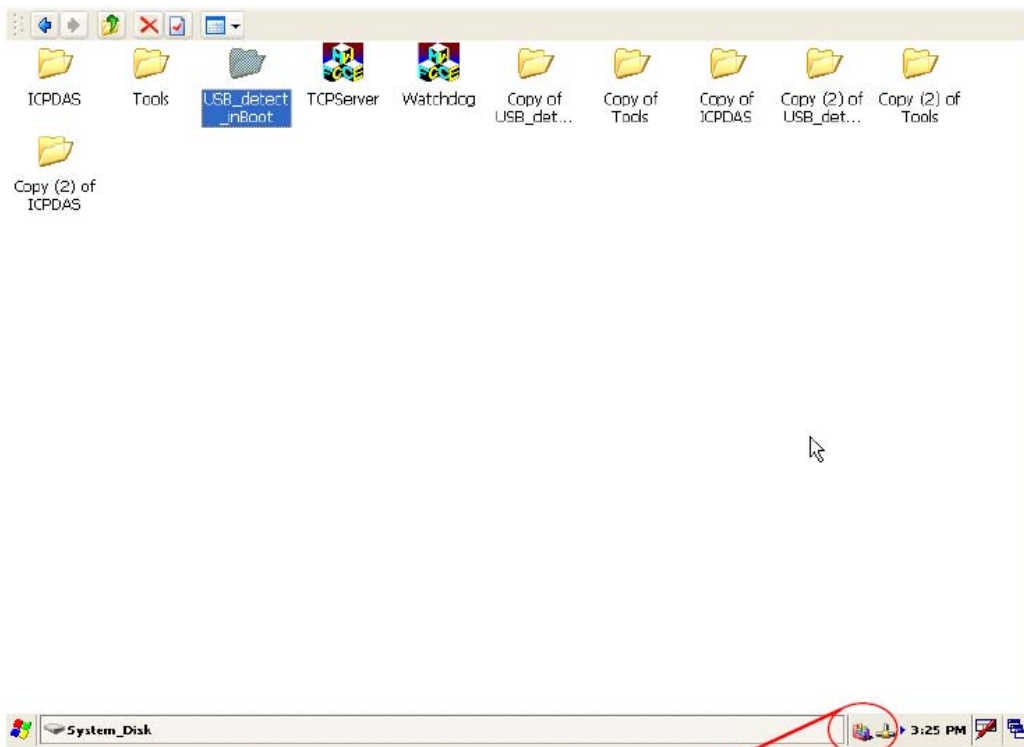
***Note 1:** System_Disk defragment action:

System_Disk defragment action is designed to increase access speed by rearranging the files stored on the System_Disk so that they occupy contiguous storage locations. The purpose is to optimize the time it takes to read and write files to/from the System_Disk by minimizing head travel time and maximizing the transfer rate. While defragmenting the System_Disk, the RUN LED will blink and the defragment icon will be show in the system tray on the bottom-right hand side of the screen.

Note: Don't power off the WinPAC while defragment action is proceeding.



Classification	System and Application FAQ on WinCE PAC				No.	7-001-00	
Author	Tunglu-Yu	Version	1.0.1	Date	2013/05/06	Page	6/7



Classification	System and Application FAQ on WinCE PAC				No.	7-001-00	
Author	Tunglu-Yu	Version	1.0.1	Date	2013/05/06	Page	7/7

Revision History

Revision	Date	Description
1.0.1	2013/08/06	NEW: Added support information for WP-5000.
1.0.0	2010/02/12	Initial release