

Classification	System and Application FAQ on WinCE PAC				No.	2-015-00	
Author	Tunglu-Yu	Version	1.0.0	Date	2013/5/16	Page	1/3

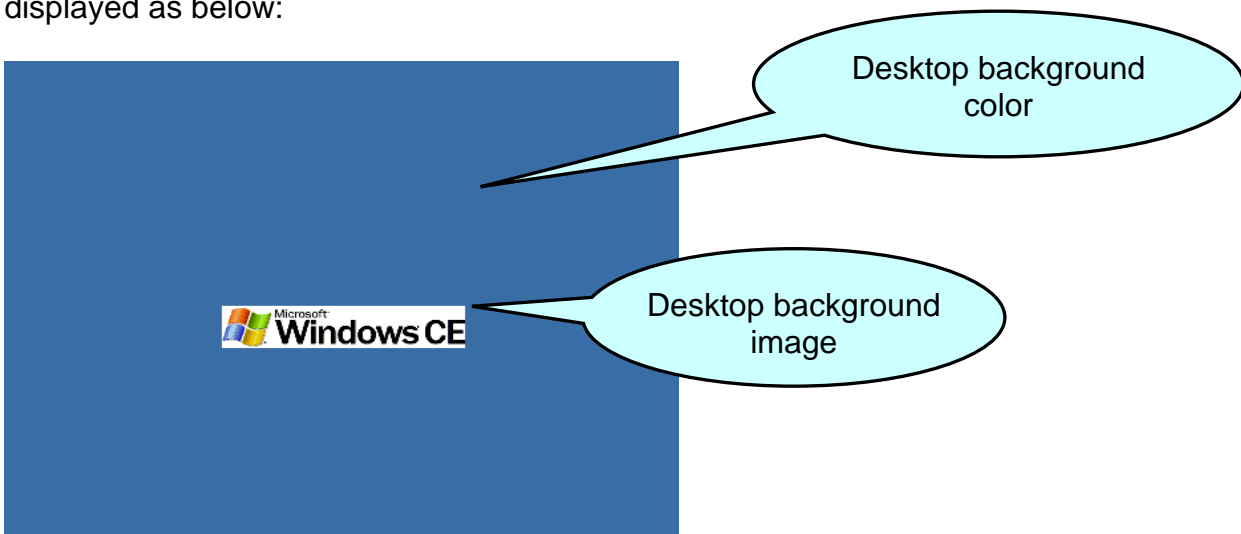
## How to change the desktop background image

### Applies to:

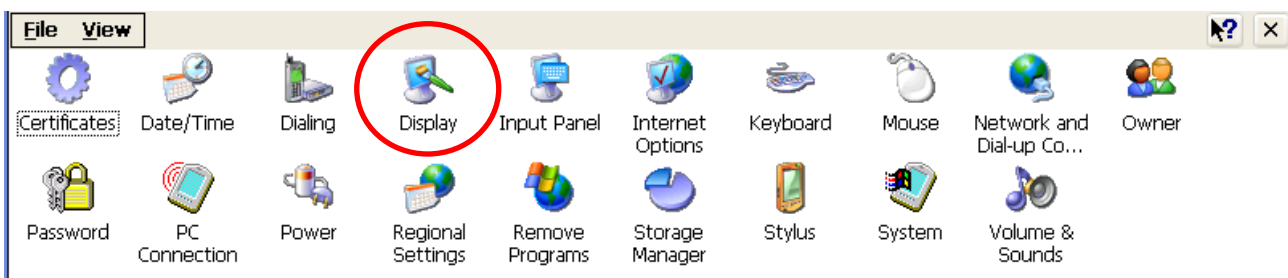
Platform	OS version	WinPAC/ViewPAC utility version
WinPAC series	All versions	All versions
ViewPAC series	All versions	All versions

Use the follow steps to change the desktop background image of “WinCE5.0”:

**Note:** The desktop background image needs be a pixel-based bitmap image file (\*.bmp) and it is displayed as below:



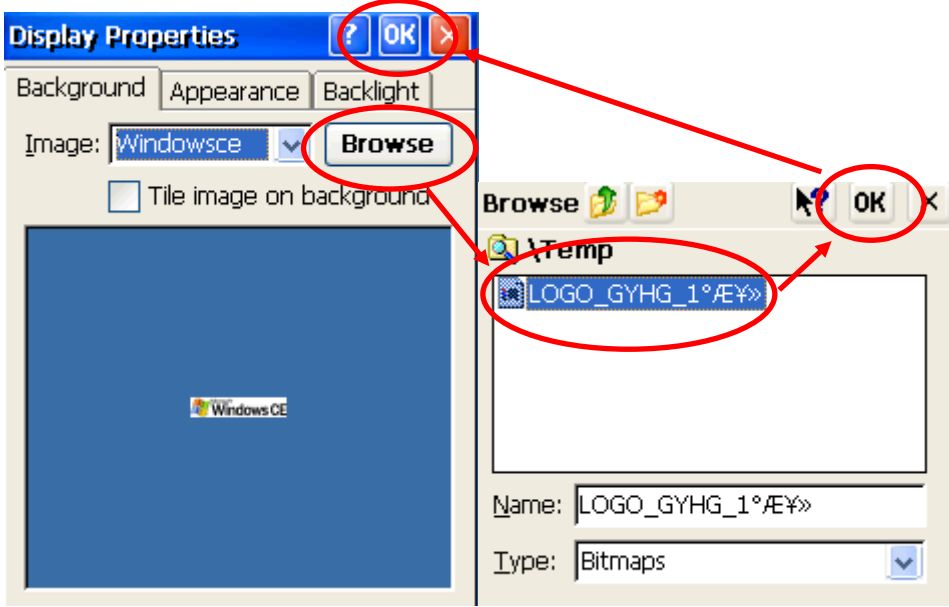
**Step 1:** Open the **Control panel** by clicking Start >> Settings >> Control Panel, and then double click the display icon for Display.



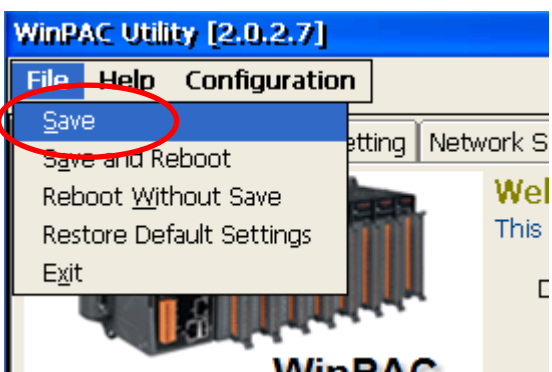
Classification	System and Application FAQ on WinCE PAC				No.	2-015-00	
Author	Tunglu-Yu	Version	1.0.0	Date	2013/5/16	Page	2/3

**Step 2:** Click the Background tab and click **Browse** to choose your image file. After selecting the image file, clicking OK of the pop-up dialog, and then click OK on Display Properties window.

**Note:** The image file needs be a \*.bmp file and be saved in System\_disk folder.



**Step 3:** Launch WinPAC Utility and click **File >> Save** to save the setting.



Classification	System and Application FAQ on WinCE PAC				No.	2-015-00	
Author	Tunglu-Yu	Version	1.0.0	Date	2013/5/16	Page	3/3

## Revision History

Revision	Date	Description
1.0.0	2013/05/16	Initial release