

Classification	System and Application FAQ on WinCE PAC				No.	1-011-00	
Author	Tunglu-Yu	Version	1.0.0	Date	2013/05/16	Page	1/4

## How to use the Console port

Applies to:

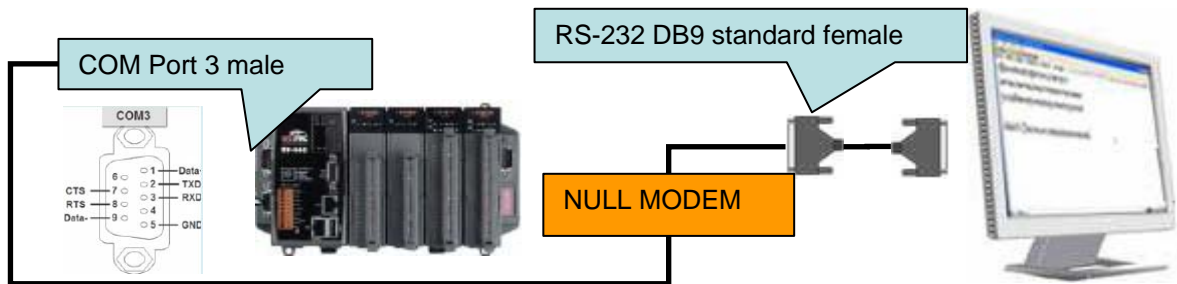
Platform	OS version	WinPAC/ViewPAC utility version
WP-8x3x	V1.3.0.0 and later	V2.0.2.5 and later
WP-8x4x	V1.6.0.1 and later	
WP-5000	V1.1.1.0 and later	
VP-23Wx/ VP-25Wx	V2.2.0.0 and later	
VP-413x	V2.4.1.0 and later	

The console port can be used to control the WinPAC/ ViewPAC or execute a program.

Please perform the follow steps to use the console port:

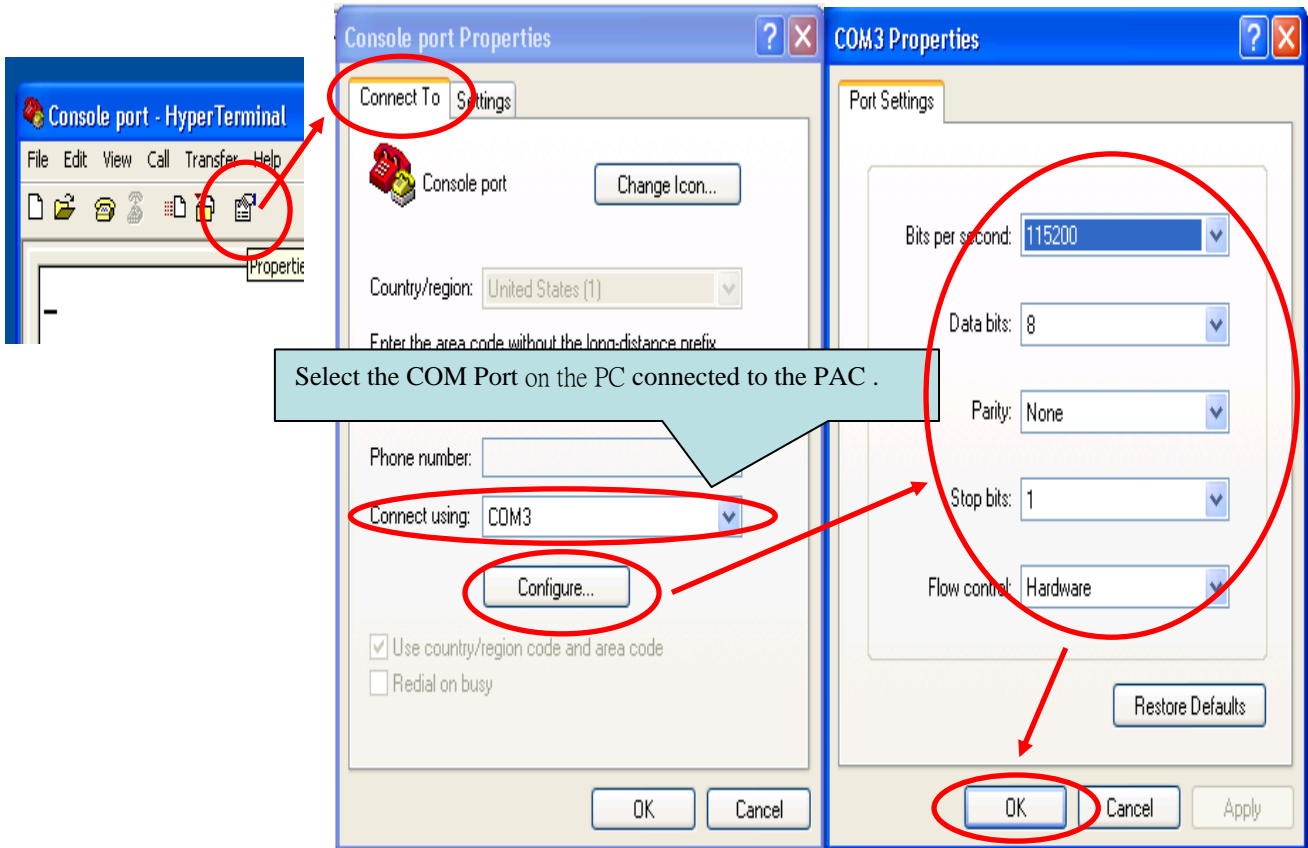
### Connect to the PC

**Step 1:** Connect the WinPAC/ViewPAC (COM3) and the PC using an RS232 cable.



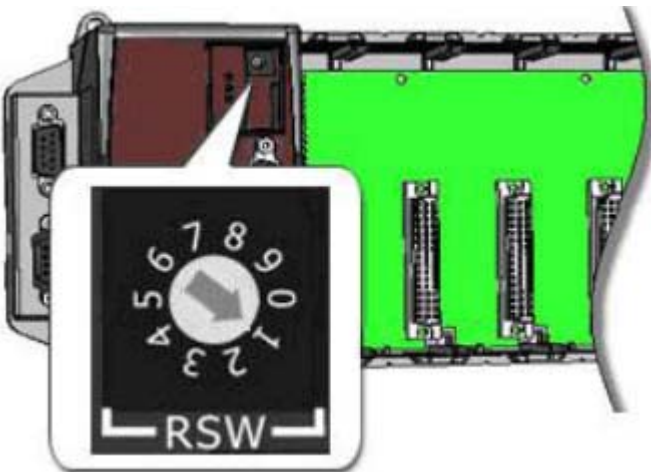
Classification	System and Application FAQ on WinCE PAC				No.	1-011-00	
Author	Tunglu-Yu	Version	1.0.0	Date	2013/05/16	Page	2/4

**Step 2:** On the PC side, execute HyperTerminal (Start->All Programs->Accessories->Communications->HyperTerminal), and configure the settings as bellow.



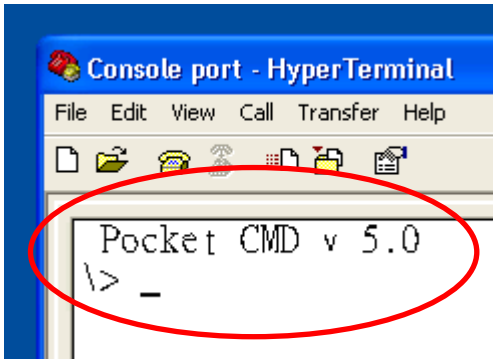
**Step 3:** Turn the Rotary switch to 1 to boot the PAC controller at safe mode. The following message displayed in the HyperTerminal window on PC means that the connection is established, and you may key in your command to control the PAC controller.

### 3.1.



Classification	System and Application FAQ on WinCE PAC				No.	1-011-00	
Author	Tunglu-Yu	Version	1.0.0	Date	2013/05/16	Page	3/4

**3.2.**



**Note:** The operation of the Console port is the same with the CMD.

Classification	System and Application FAQ on WinCE PAC				No.	1-011-00	
Author	Tunglu-Yu	Version	1.0.0	Date	2013/05/16	Page	4/4

## Revision History

Revision	Date	Description
1.0.0	2013/05/16	Initial release