

Classification	System and Application FAQ on WinCE PAC				No.	1-010-00	
Author	Tunglu-Yu	Version	1.0.0	Date	2013/05/16	Page	1/3

How to use the I-8135W to expand the Ethernet port number

Applies to:

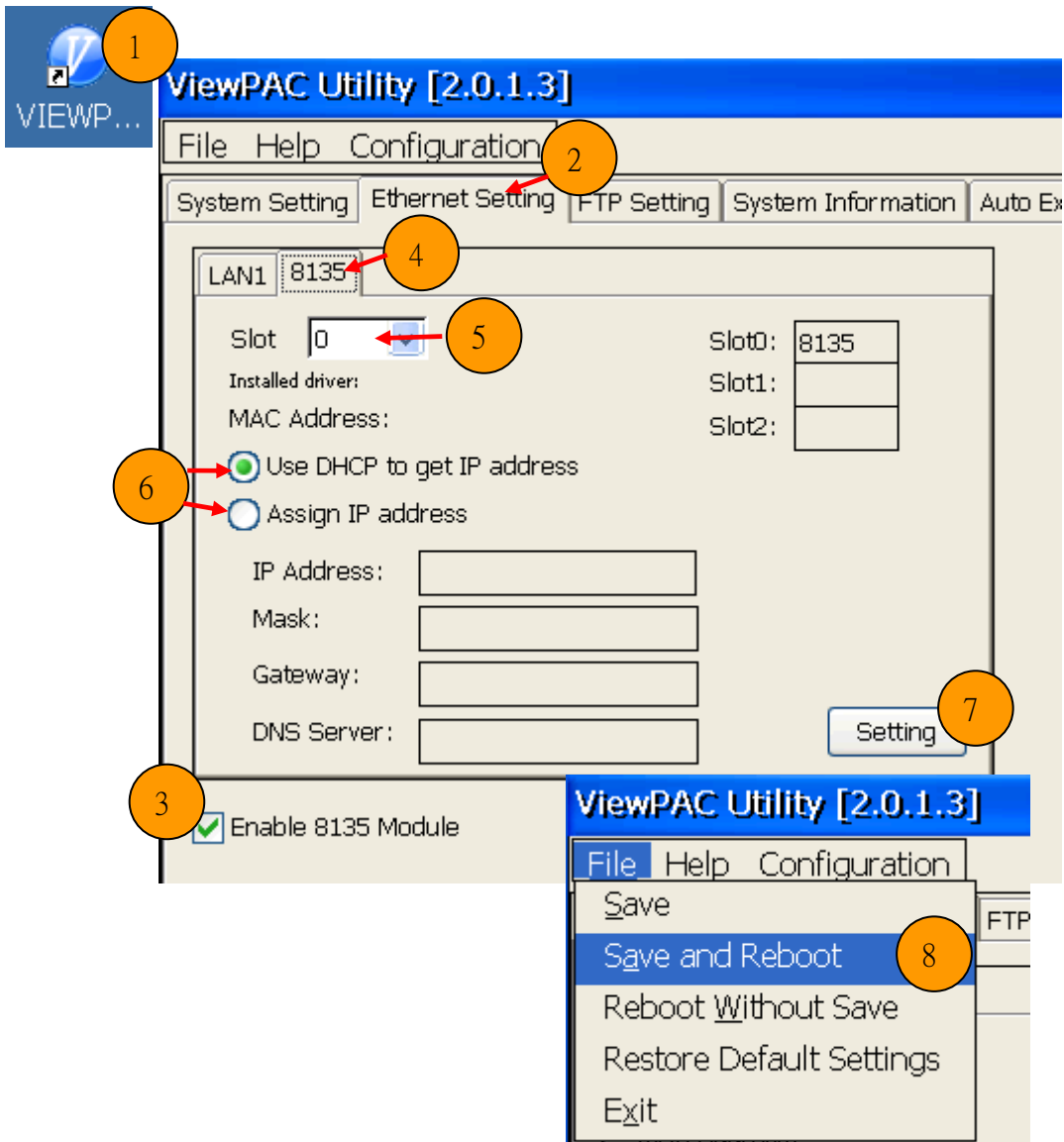
<i>Platform</i>	<i>OS version</i>	<i>WinPAC/ViewPAC utility version</i>
<i>WinPAC series</i>	<i>N/A</i>	<i>N/A</i>
<i>ViewPAC series</i>	<i>All versions</i>	<i>All versions</i>

N/A: Not applicable to this platform and OS.

Please perform the follow steps to expand the Ethernet port number with I-8135W.

- Step1:** Turn off the ViewPAC and then insert the I-8135W module to any slot.
- Step2:** Power on the ViewPAC, execute the ViewPAC_Utility, click the "Ethernet settings" tag and select the "8135" tag.
- Step3:** Check the "Enable 8135 Module" checkbox; set using DHCP or static IP. If using static IP, assign the valid IP address, Mask, Gateway and DND server.
- Step4:** Press the setting button.
- Step5:** Select "File" -> "Save and Reboot" from top toolbar, the setting will take effect after restart.

Classification	System and Application FAQ on WinCE PAC				No.	1-010-00	
Author	Tunglu-Yu	Version	1.0.0	Date	2013/05/16	Page	2/3



Classification	System and Application FAQ on WinCE PAC				No.	1-010-00	
Author	Tunglu-Yu	Version	1.0.0	Date	2013/05/16	Page	3/3

Revision History

Revision	Date	Description
1.0.0	2013/05/16	Initial release