

Classification	System and Application FAQ on WinCE PAC				No.	1-005-07	
Author	Tunglu-Yu	Version	1.0.1	Date	2013/08/06	Page	1/4

How to calibrate a ViewPAC touch panel

Applies to:

Platform	OS version	WinPAC/ViewPAC utility version
WP-8x3x/ WP-8x4x	N/A	N/A
WP-5000	N/A	N/A
VP-23W1	N/A	N/A
VP-25W1/ VP-4131	All versions	All versions

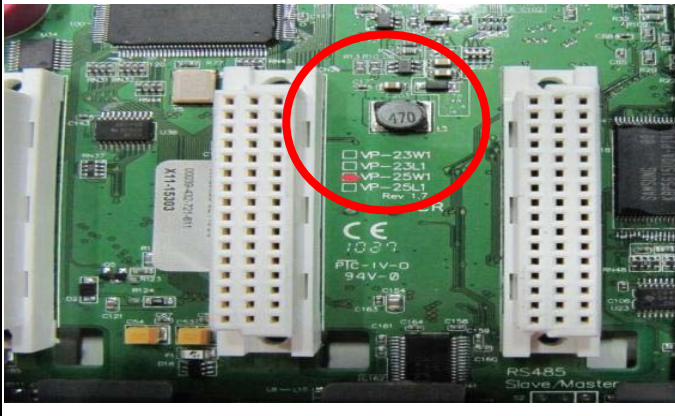
N/A: Not applicable to this platform and OS.

The touch screen has function with the default calibration. It is necessary to calibrate your screen when it works not precise.

The calibration process is different from the PCB version, so before starting the calibration process, you must first check with the PCB version, as follows:

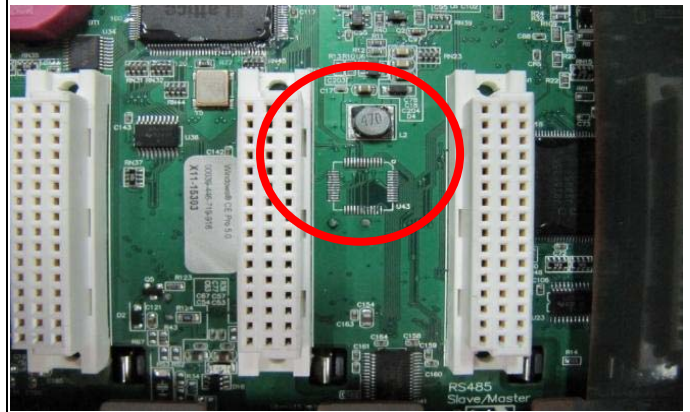
The latest version - PCB 2.0 or later

If your PCB version is 1.7 or later, there is a rev number sticker between the I/O slots.



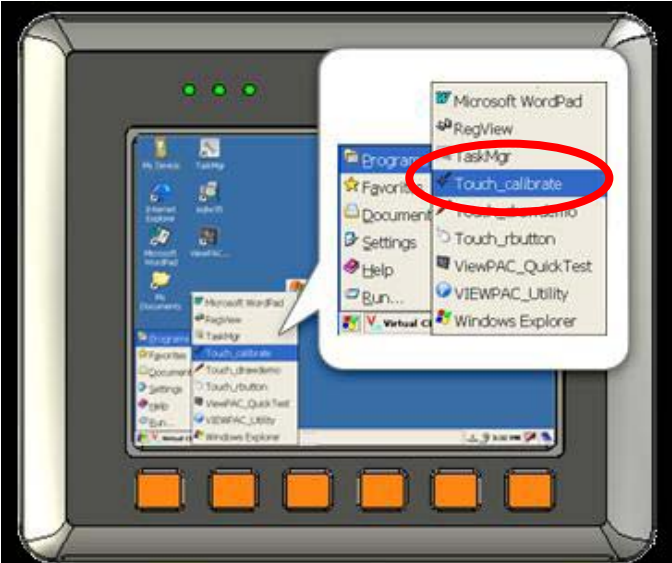
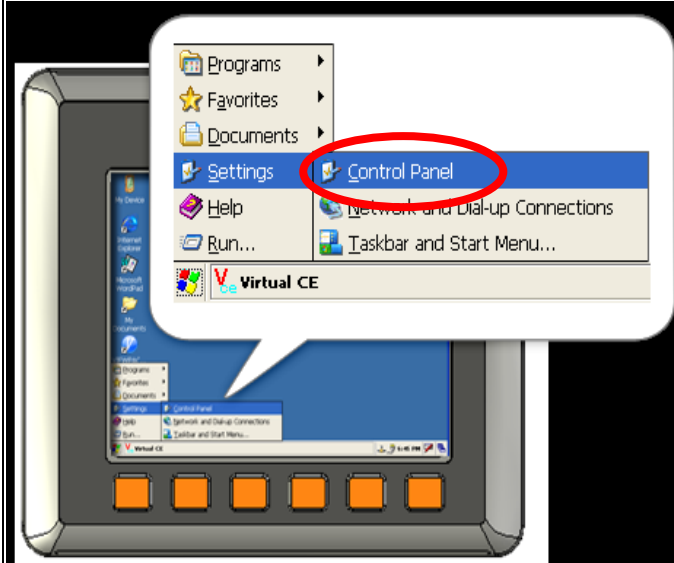
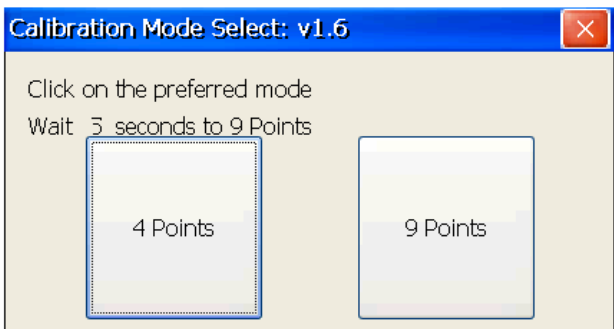
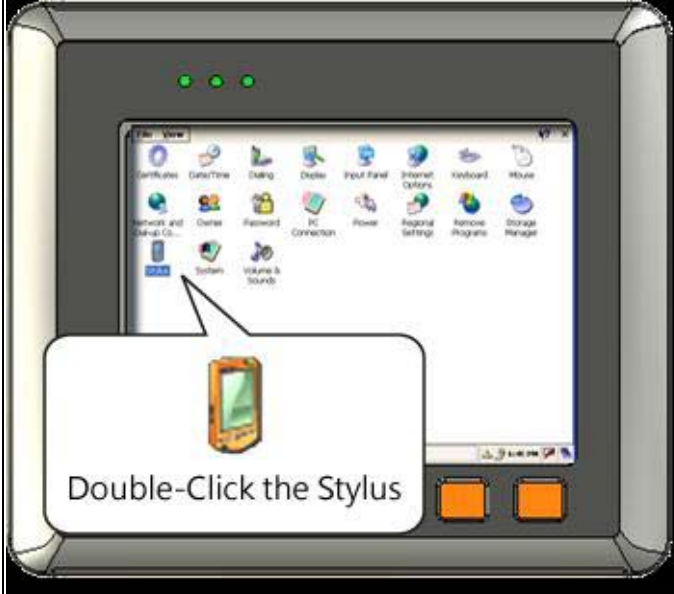
The earlier version - PCB 1.5

If your PCB version is 1.5, there is no rev number sticker between the I/O slots.



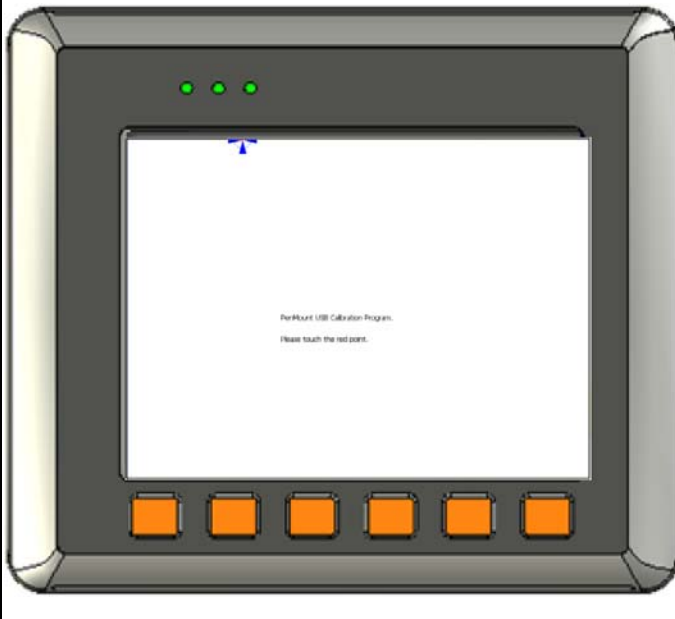
Classification	System and Application FAQ on WinCE PAC				No.	1-005-07	
Author	Tunglu-Yu	Version	1.0.1	Date	2013/08/06	Page	2/4

After checking the PCB version, then select the calibration process that corresponds to your PCB version. (The VP-4131 use the latest calibration process) .

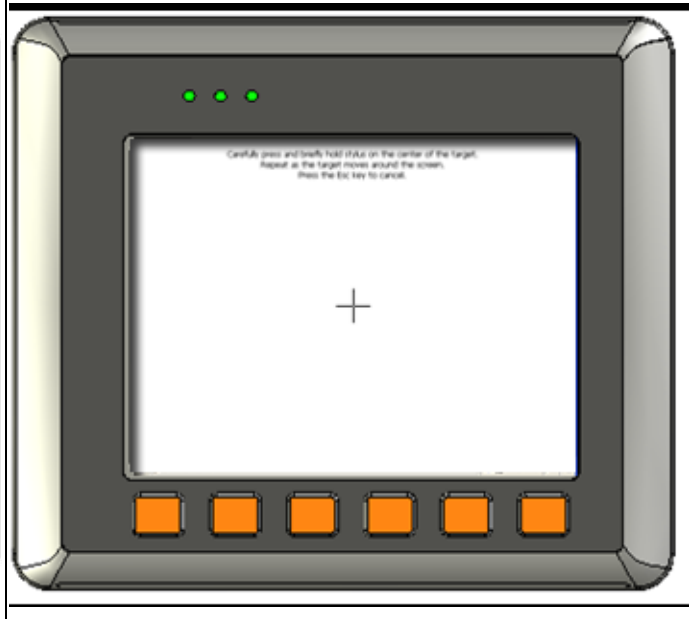
The latest version (PCB 2.0 or later)	The earlier version (PCB 1.7 or earlier)
<p>1) Run the Touch_calibrate</p> 	<p>1) Open the Control Panel</p> 
<p>2) Click the 4 Points or the 9 Points button.</p> 	<p>1) Run the Stylus.</p> 

Classification	System and Application FAQ on WinCE PAC				No.	1-005-07	
Author	Tunglu-Yu	Version	1.0.1	Date	2013/08/06	Page	3/4

3) Tap the touch pen in the exact center of each of the calibration markers (+)

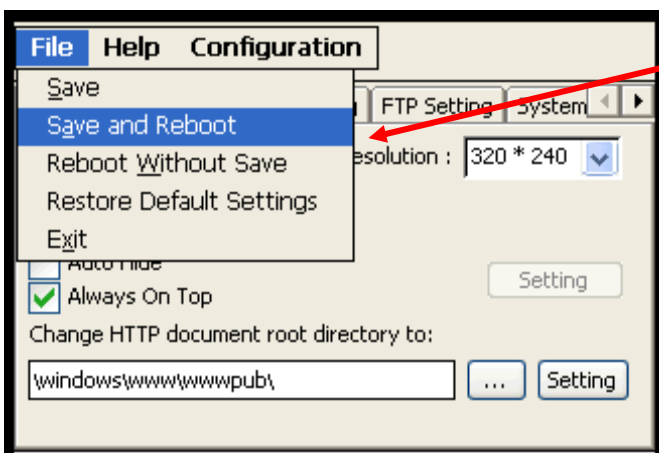


3) Tap the touch pen in the exact center of each of the calibration markers (+)



4) Touch the panel to finish the calibration program

5) Run the View PAC Utility to save the settings and reboot the View PAC



Classification	System and Application FAQ on WinCE PAC				No.	1-005-07	
Author	Tunglu-Yu	Version	1.0.1	Date	2013/08/06	Page	4/4

Revision History

Revision	Date	Description
1.0.1	2013/08/06	NEW: Added support information for VP-4131 series
1.0.0	2010/02/12	Initial release