

Classification	System and Application FAQ on WinCE PAC				No.	1-004-05	
Author	Tunglu-Yu	Version	1.0.1	Date	2013/8/06	Page	1/6

How to set up an ELO serial touch panel

Applies to:

Platform	OS version	WinPAC/ViewPAC utility version
WP-8x3x/ WP-8x4x	All versions	All versions
WP-5000	All versions	All versions
VP-23W1/ VP-25W1	N/A	N/A
VP-4131	N/A	N/A

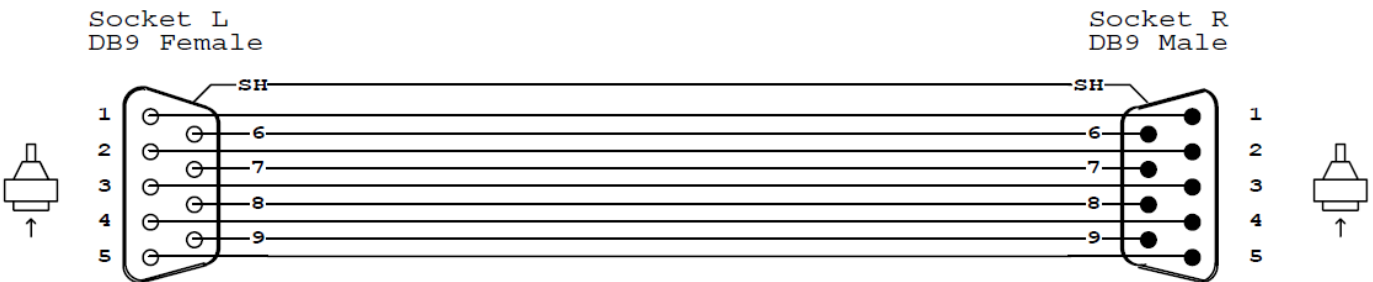
N/A: Not applicable to this platform and OS.

Tips & Warnings

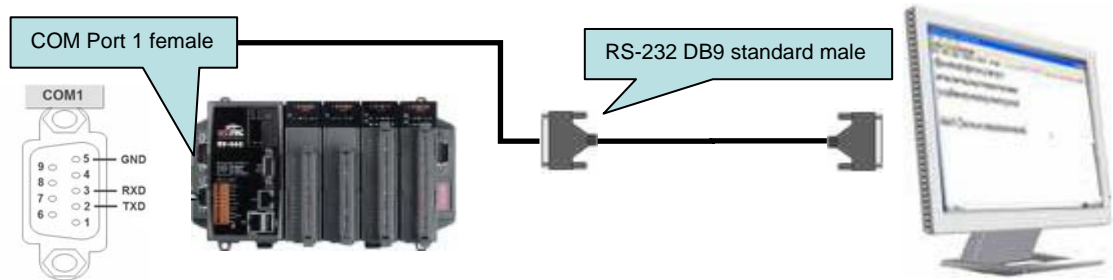


Serial COM Ports 1 and 4 on WP-8000 are standard female/male RS-232 COM Ports. If COM3 is used to connect to the touch panel, you will need a "NULL MODEM".

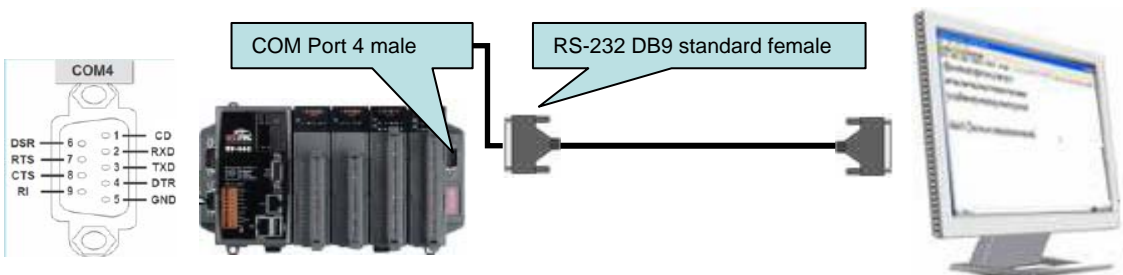
Standard Wiring



Connecting to COM1

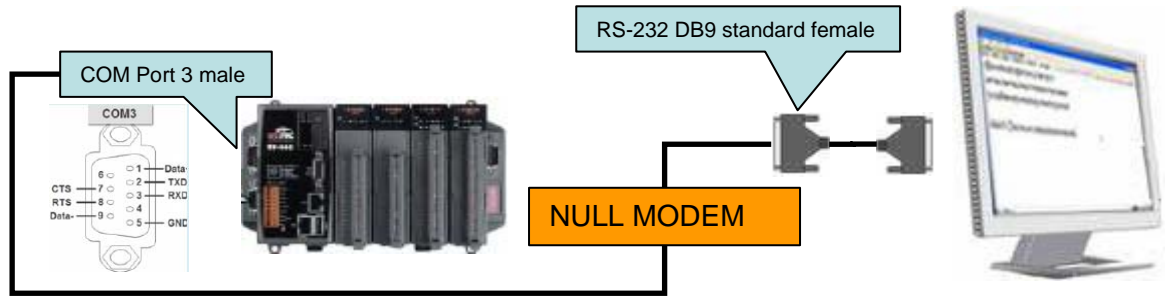


Connecting to COM4



Classification	System and Application FAQ on WinCE PAC				No.	1-004-05	
Author	Tunglu-Yu	Version	1.0.1	Date	2013/8/06	Page	2/6

Connecting to COM3



To use an ELO serial touch panel, perform the following steps:

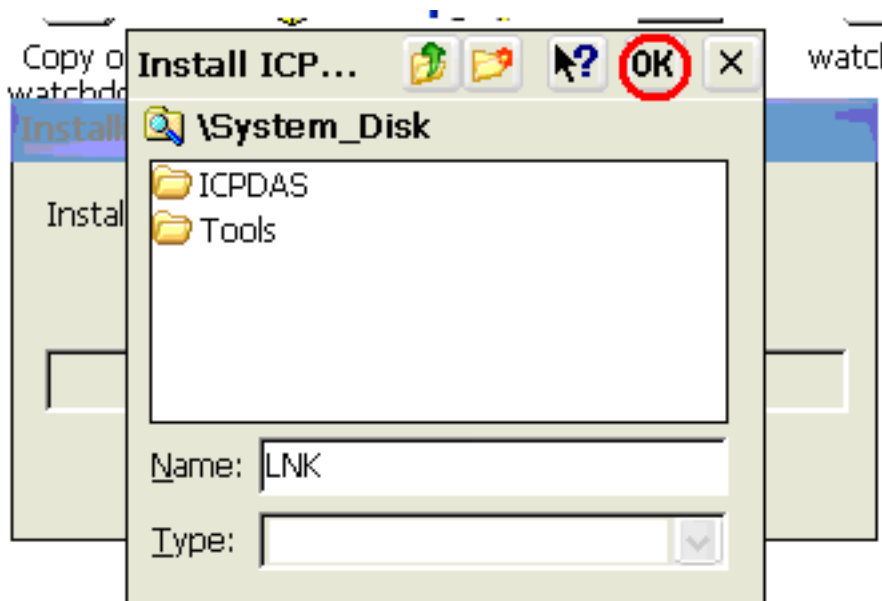
Step 1: Locate the driver.

The **Egalax_Serial_TOUCH_V20100729.cab** is located at

1. **WinPAC file path:** \Micro_SD\External_device_driver\
2. **CD:** \napdos\wp-8x4x_ce50\Micro_SD\External_device_driver\
3. **ftp://ftp.icpdas.com/pub/cd/winpac/napdos/wp-8x4x_ce50/Micro_SD/external_device_driver/**

Step 2: Install the driver.

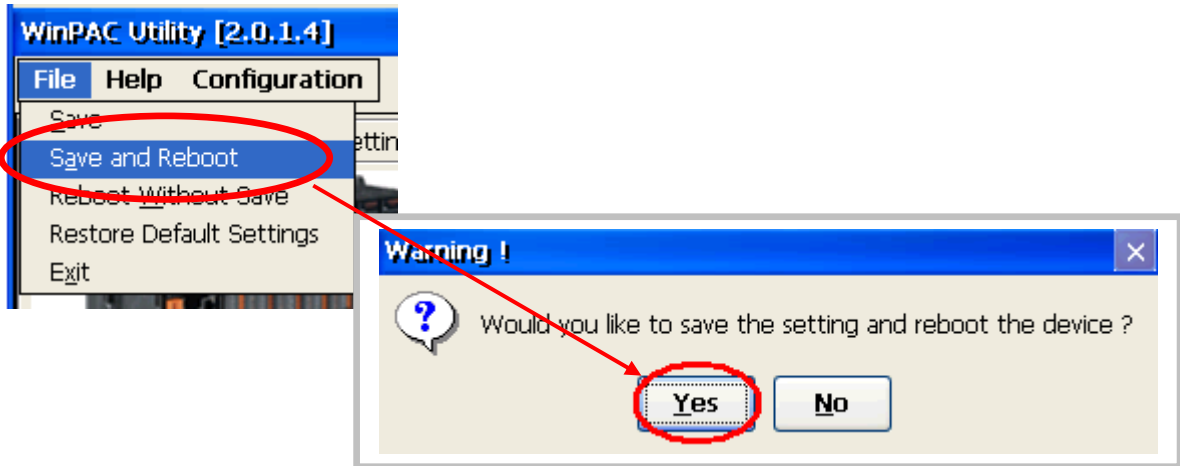
2.1. Double click the **Egalax_Serial_TOUCH_V20100729.cab**, and then click "OK".



Classification	System and Application FAQ on WinCE PAC				No.	1-004-05	
Author	Tunglu-Yu	Version	1.0.1	Date	2013/8/06	Page	3/6

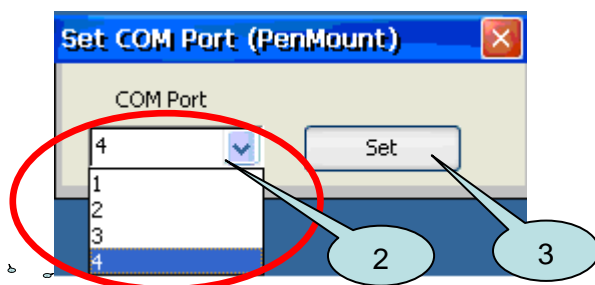
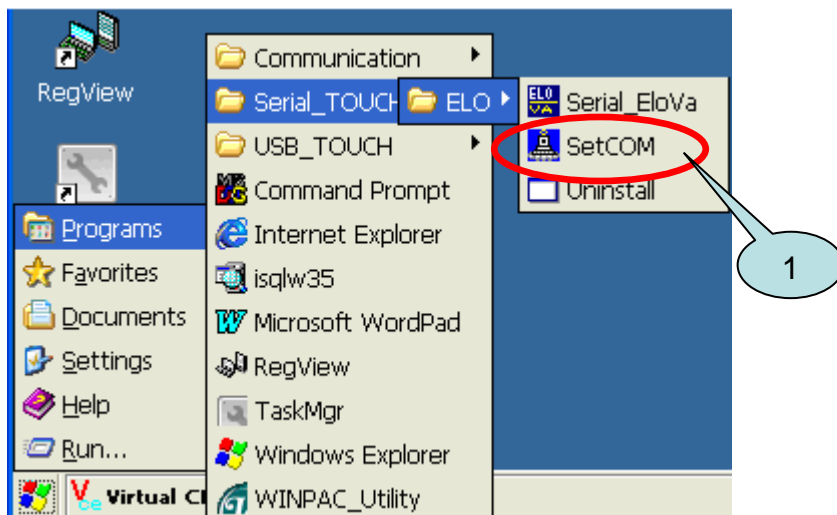
Step 3: Save and Reboot your WinPAC.

- 3.1. Start the Win PAC utility on the desktop and click the “File”→”Save and Reboot”.
- 3.2. Click the “Yes” button on the warning box and wait for reboot.



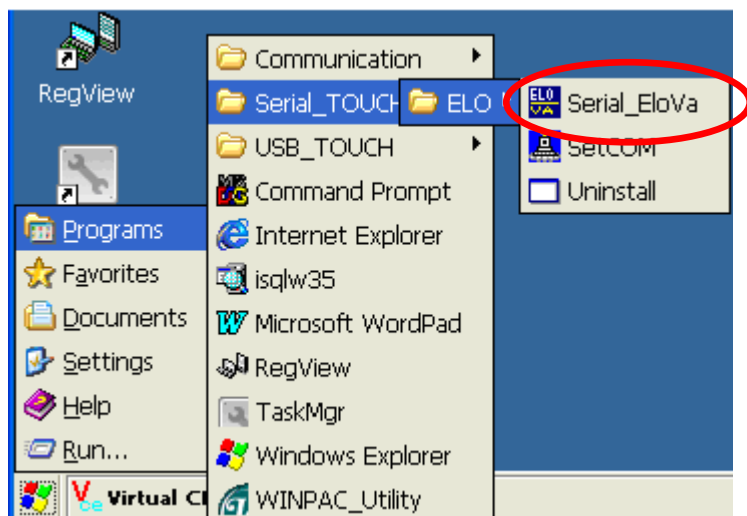
Step 4: Calibrate the touch panel.

- 4.1. Select the COM Port connected to the touch panel after rebooting.
 1. Click Start → Programs → Serial_TOUCH → ELO → SetCOM.
 2. Select the COM port used and press “Set” button.

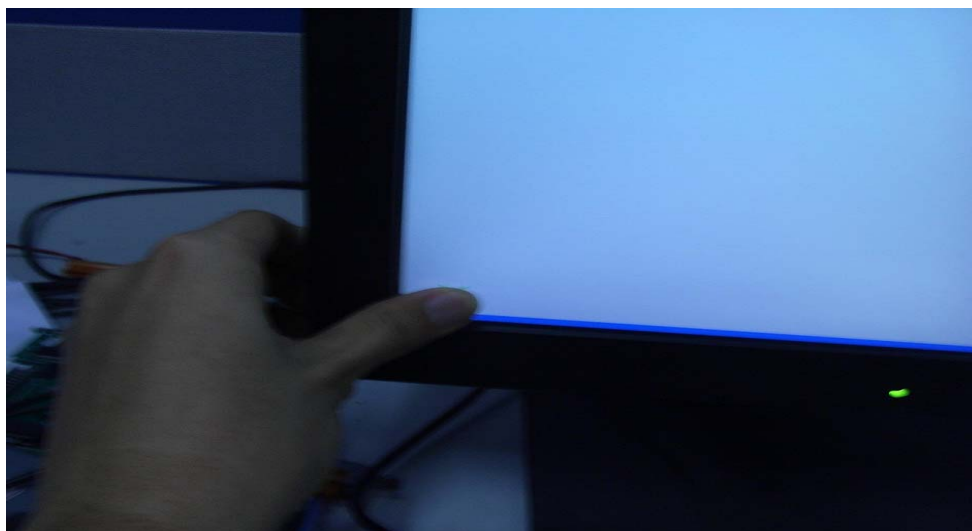


Classification	System and Application FAQ on WinCE PAC				No.	1-004-05	
Author	Tunglu-Yu	Version	1.0.1	Date	2013/8/06	Page	4/6

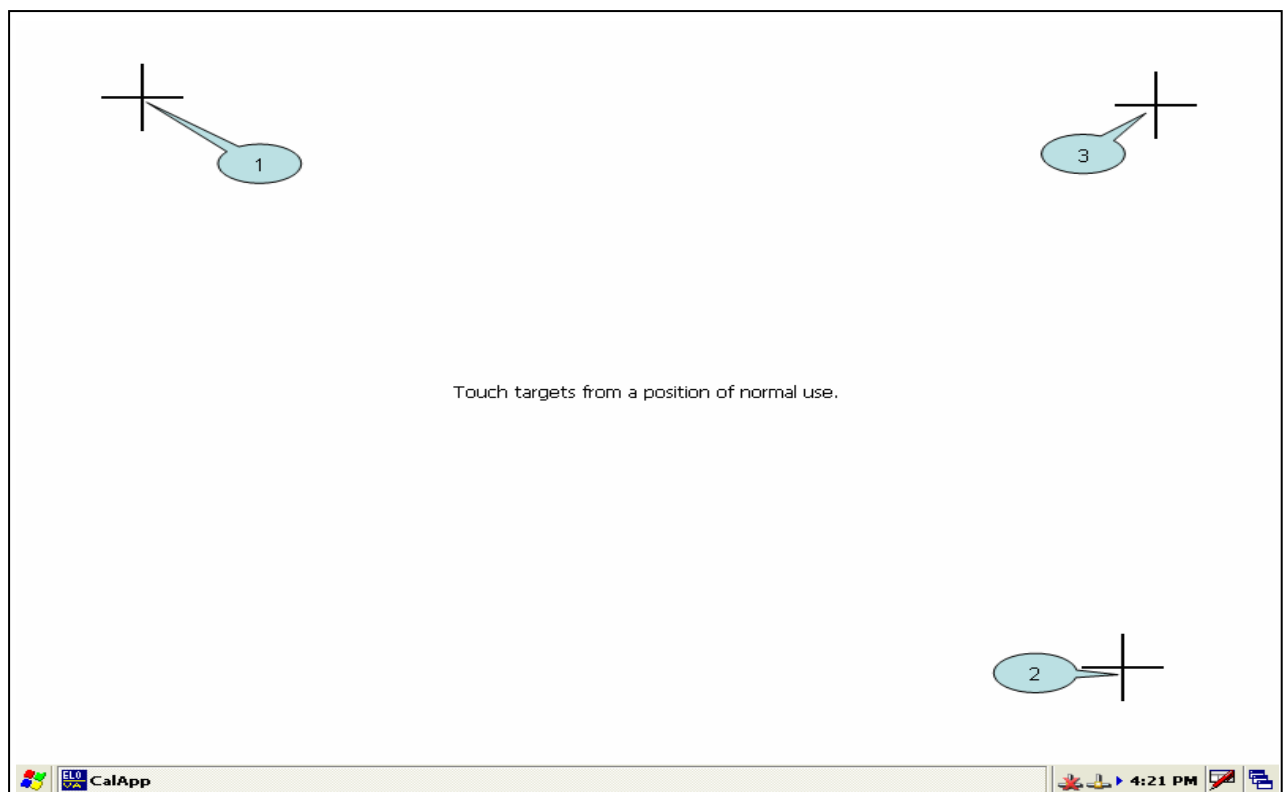
4.2. Click Start → Programs → Serial_TOUCH → ELO → Serial_EloVa.



4.3. Touch the “+” icons on the monitor one by one to perform the calibration process.

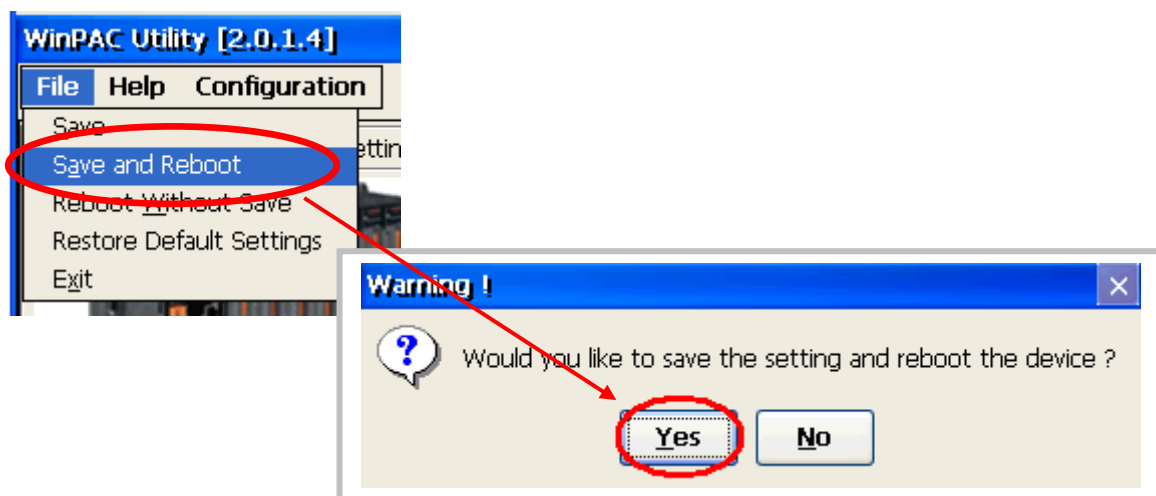


Classification	System and Application FAQ on WinCE PAC				No.	1-004-05	
Author	Tunglu-Yu	Version	1.0.1	Date	2013/8/06	Page	5/6



Step 5: Save the settings.

- 5.1. Start the Win PAC utility and click the “**File**”→ “**Save and Reboot**” menu option.
- 5.2. Click the “**Yes**” button on the warning box and wait for reboot.



Classification	System and Application FAQ on WinCE PAC				No.	1-004-05	
Author	Tunglu-Yu	Version	1.0.1	Date	2013/8/06	Page	6/6

Revision History

Revision	Date	Description
1.0.1	2013/08/06	NEW: Added support information for WP-5000 series
1.0.0	2010/02/12	Initial release