

Classification	System and Application FAQ on WinCE PAC				No.	1-004-02	
Author	Tunglu-Yu	Version	1.0.1	Date	2013/8/06	Page	1/5

How to set up an ELO USB touch panel

Applied to:

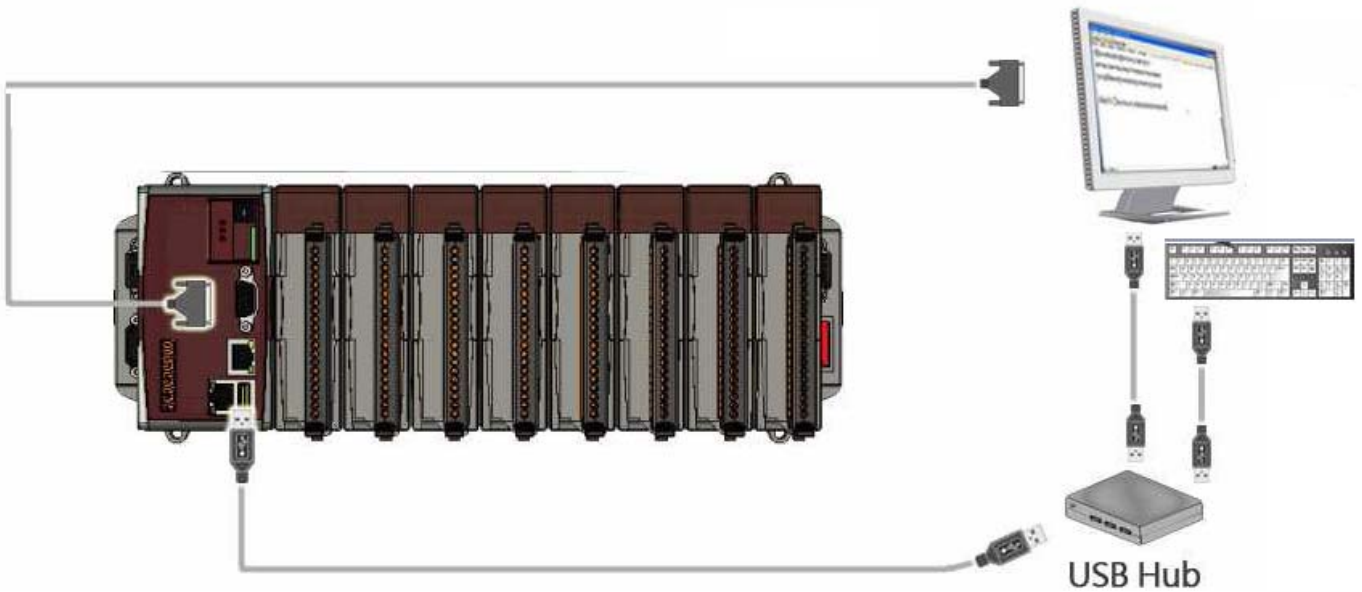
Platform	OS version	WinPAC/ViewPAC utility version
WP-8x3x/ WP-8x4x	All versions	All versions
WP-5000	All versions	All versions
VP-23W1/ VP-25W1	N/A	N/A
VP-4131	N/A	N/A

N/A: Not applicable to this platform and OS.

Tips & Warnings



To use a touch panel and a keyboard at the same time on WP-8x4x, you need a USB hub to expand the single USB port of WP-8x4x into several.



Classification	System and Application FAQ on WinCE PAC				No.	1-004-02	
Author	Tunglu-Yu	Version	1.0.1	Date	2013/8/06	Page	2/5

To use an ELO USB touch panel, perform the following steps:

Step 1: Locate the driver.

The **ELO_USB_TOUCH_V20100506.CAB** is located at

1. **WinPAC file path:** \Micro_SD\External_device_driver\
2. CD: \napdos\wp-8x4x_ce50\Micro_SD\External_device_driver\
3. ftp://ftp.icpdas.com/pub/cd/winpac/napdos/wp-8x4x_ce50/Micro_SD/external_device_driver/

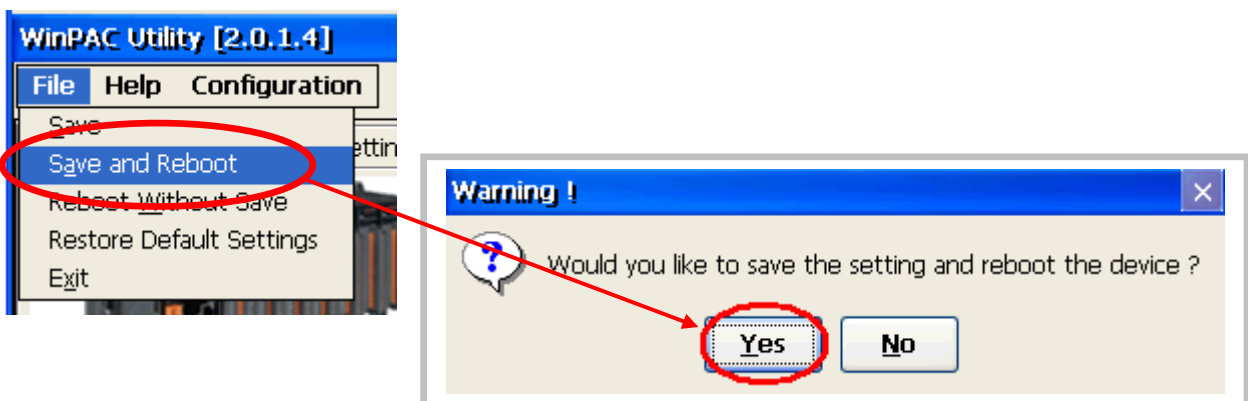
Step 2: Install the driver.

2.1. Double click the **ELO_USB_TOUCH_V20100506.CAB** file, and then click **“OK”**.



Step 3: Save and Reboot your WinPAC.

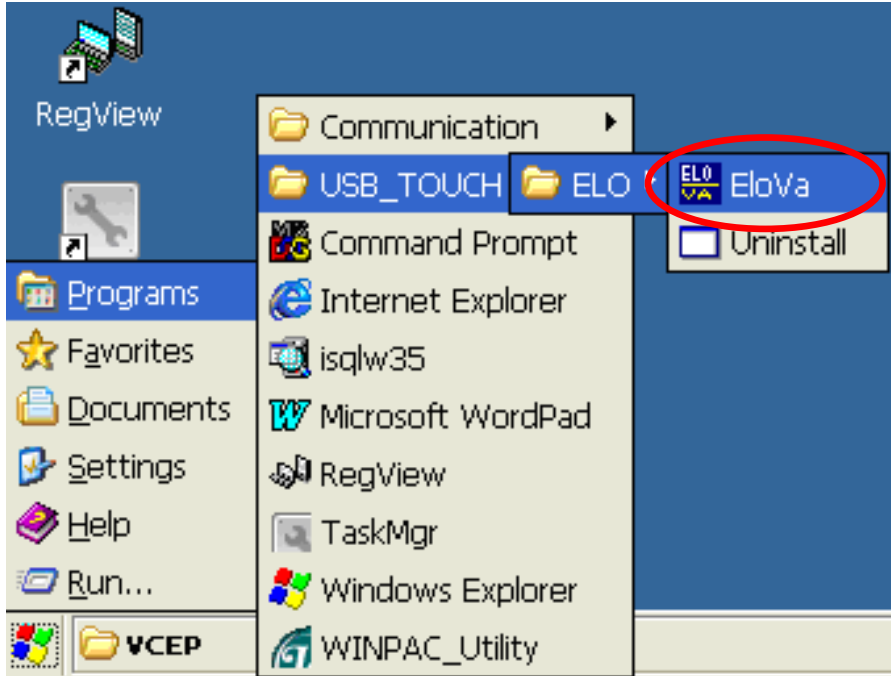
- 3.1. Start the Win PAC utility on the desktop and click the **“File”** → **“Save and Reboot”**.
- 3.2. Click the **“Yes”** button on the warning window and wait for reboot.



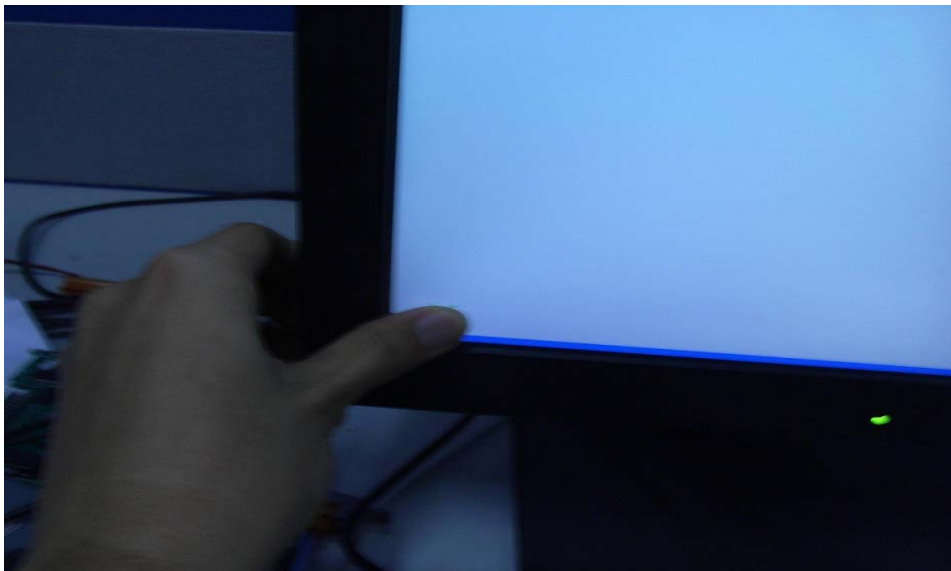
Classification	System and Application FAQ on WinCE PAC				No.	1-004-02	
Author	Tunglu-Yu	Version	1.0.1	Date	2013/8/06	Page	3/5

Step 4: Calibrate the touch panel.

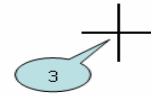
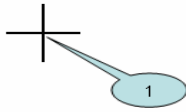
4.1. After rebooting, click Start → Programs → USB_TOUCH → ELO → EloVa.



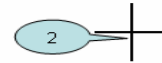
4.2. Touch the “+” icons on the monitor one by one to perform the calibration process.



Classification	System and Application FAQ on WinCE PAC				No.	1-004-02	
Author	Tunglu-Yu	Version	1.0.1	Date	2013/8/06	Page	4/5

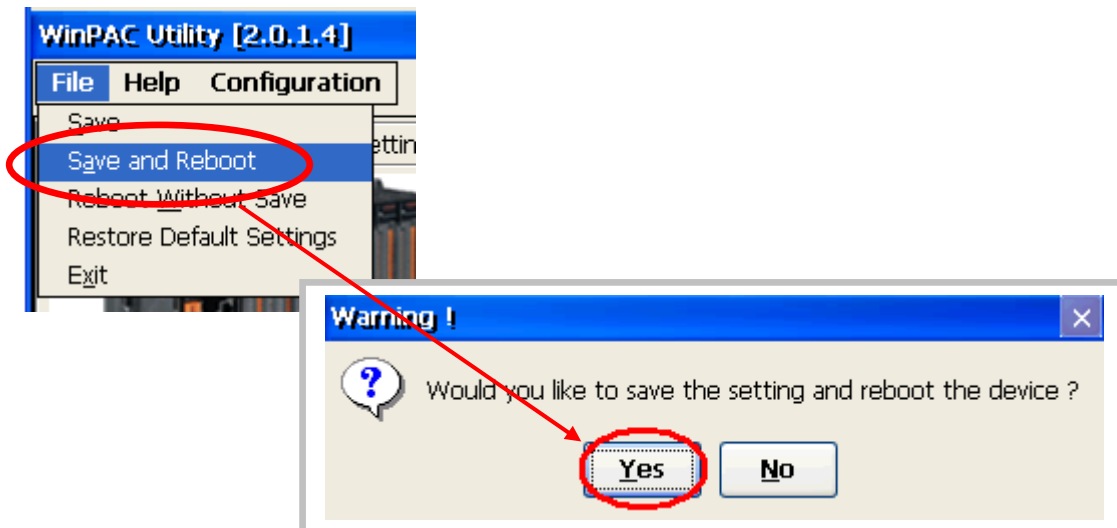


Touch targets from a position of normal use.



Step 5: Save the settings.

- 5.1. Start the Win PAC utility and click the **"File"** → **"Save and Reboot"** menu option.
- 5.2. Click the **"Yes"** button and wait for reboot.



Classification	System and Application FAQ on WinCE PAC				No.	1-004-02	
Author	Tunglu-Yu	Version	1.0.1	Date	2013/8/06	Page	5/5

Revision History

Revision	Date	Description
1.0.1	2013/08/06	NEW: Added support information for WP-5000 series
1.0.0	2010/02/12	Initial release