

Classification	System and Application FAQ on WinCE PAC				No.	4-001-02	
Author	Tunglu-Yu	Version	1.0.2	Date	2010/07/04	Page	1/13

## How to update OS image by Eshell (with DHCP server enabled)

Applies to:

Platform	OS version	WinPAC/ViewPAC utility version
WP-8x3x/ XP-8x4x	All versions	All versions
WP-5000	All versions	All versions
VP-23W1/ VP-25W1	All versions	All versions
VP-4131	All versions	All versions

If you do not have DHCP server enabled on the network, please go to page10.

### Before update OS

1. Preparation of below devices.

**Monitor/VGA line**

**USB Hub**

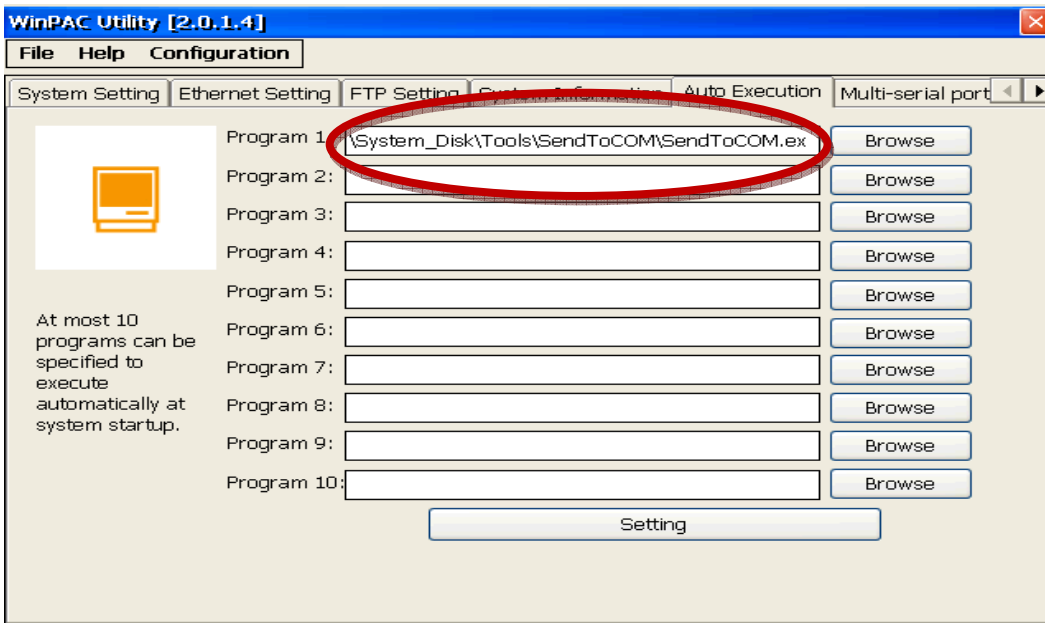
**USB Mouse**

**USB Keyboard**

**Micro\_SD**

2. Remember all settings on WinPAC Utility.

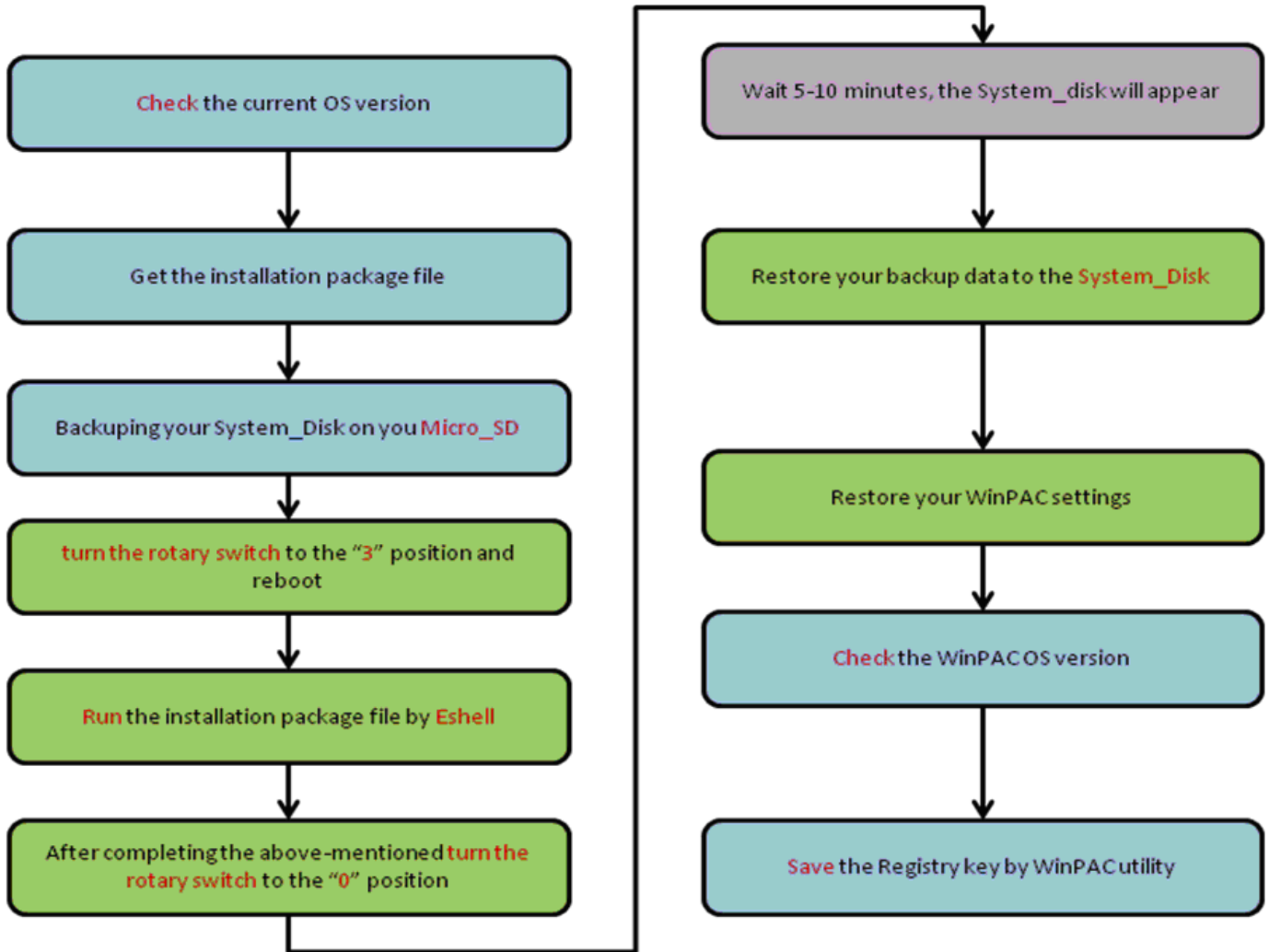
Start the WinPAC Utility on the desktop, and remember all settings (**Example below**).



3. Backup your System\_Disk in \Micro\_SD.

Classification	System and Application FAQ on WinCE PAC				No.	4-001-02	
Author	Tunglu-Yu	Version	1.0.2	Date	2010/07/04	Page	2/13

**The procedure graph of OS Updates.**

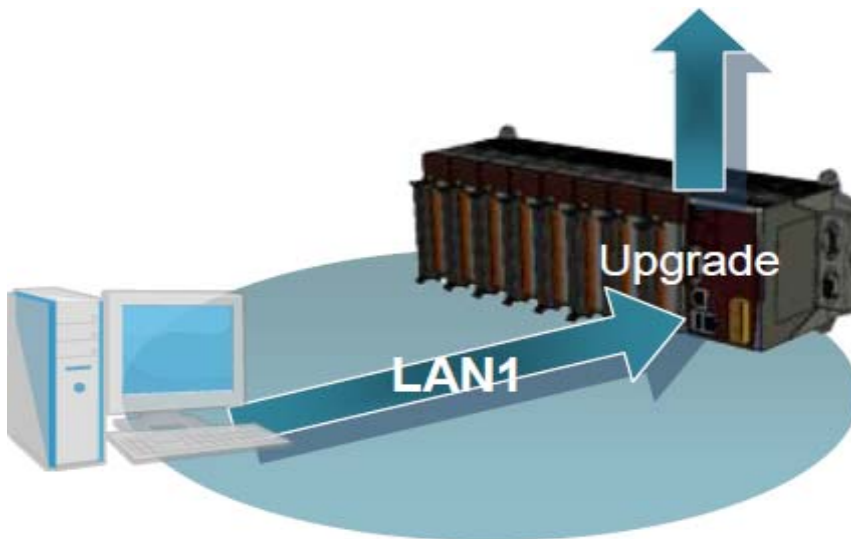


Classification	System and Application FAQ on WinCE PAC				No.	4-001-02	
Author	Tunglu-Yu	Version	1.0.2	Date	2010/07/04	Page	3/13

To update OS image by Eshell, please perform the following steps:

## Tips & Warnings

By default, the OS updates via LAN1. Therefore, to update the OS image, make sure LAN1 is connected to the LAN Network.



**Step 1:** Get the [eshell.exe](#) from `cd:\napdos\wp-8x4x_ce50\pc_tools\eshell\` and [WP8x4x\\_20130314\\_Ver.1.7.1.0\\_en.bin](#) installation package file (or any version) from [http://ftp.icpdas.com/pub/cd/winpac/napdos/wp-8x4x\\_ce50/os\\_image/update\\_from\\_eshell/](http://ftp.icpdas.com/pub/cd/winpac/napdos/wp-8x4x_ce50/os_image/update_from_eshell/).  
(\*Note1)

**Note1:** The other OS install files are located at:

WP-8x3x: [http://ftp.icpdas.com/pub/cd/winpac/napdos/wp-8x3x\\_ce50/os\\_image/update\\_from\\_eshell/](http://ftp.icpdas.com/pub/cd/winpac/napdos/wp-8x3x_ce50/os_image/update_from_eshell/)

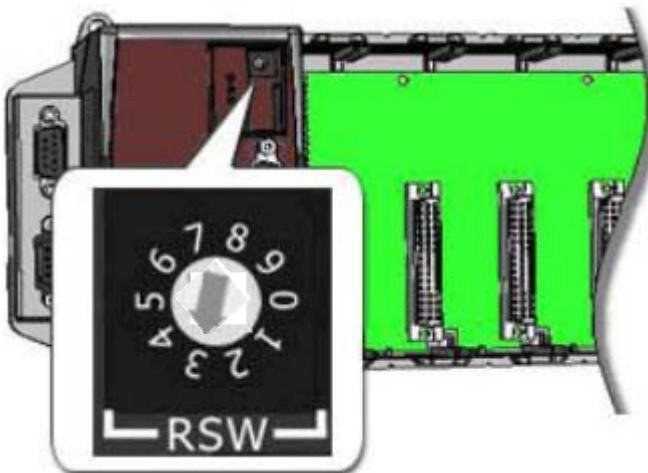
WP-5000: [http://ftp.icpdas.com/pub/cd/winpac/napdos/wp-5000\\_ce50/os\\_image/update\\_from\\_eshell/](http://ftp.icpdas.com/pub/cd/winpac/napdos/wp-5000_ce50/os_image/update_from_eshell/)

VP25W1 : [http://ftp.icpdas.com/pub/cd/winpac/napdos/vp-2000\\_ce50/os\\_image/vp-25w1/update\\_from\\_eshell/](http://ftp.icpdas.com/pub/cd/winpac/napdos/vp-2000_ce50/os_image/vp-25w1/update_from_eshell/)

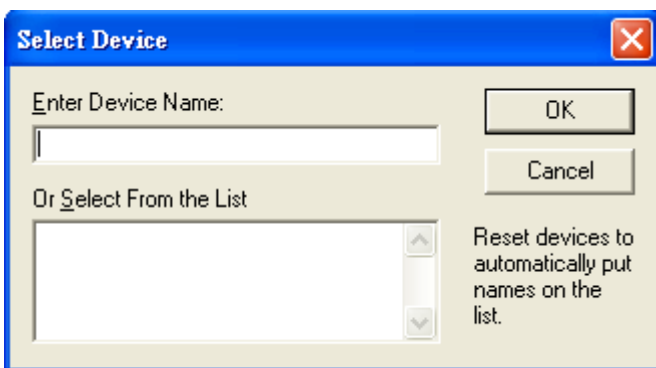
VP23W1 : [http://ftp.icpdas.com/pub/cd/winpac/napdos/vp-2000\\_ce50/os\\_image/vp-23w1/update\\_from\\_eshell/](http://ftp.icpdas.com/pub/cd/winpac/napdos/vp-2000_ce50/os_image/vp-23w1/update_from_eshell/)

Classification	System and Application FAQ on WinCE PAC				No.	4-001-02	
Author	Tunglu-Yu	Version	1.0.2	Date	2010/07/04	Page	4/13

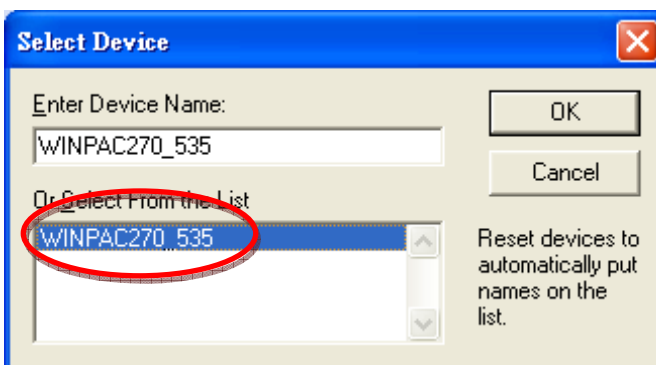
**Step 2:** Turn the rotary switch to the “3” position and reboot.



**Step 3:** Execute “Eshell” on PC.

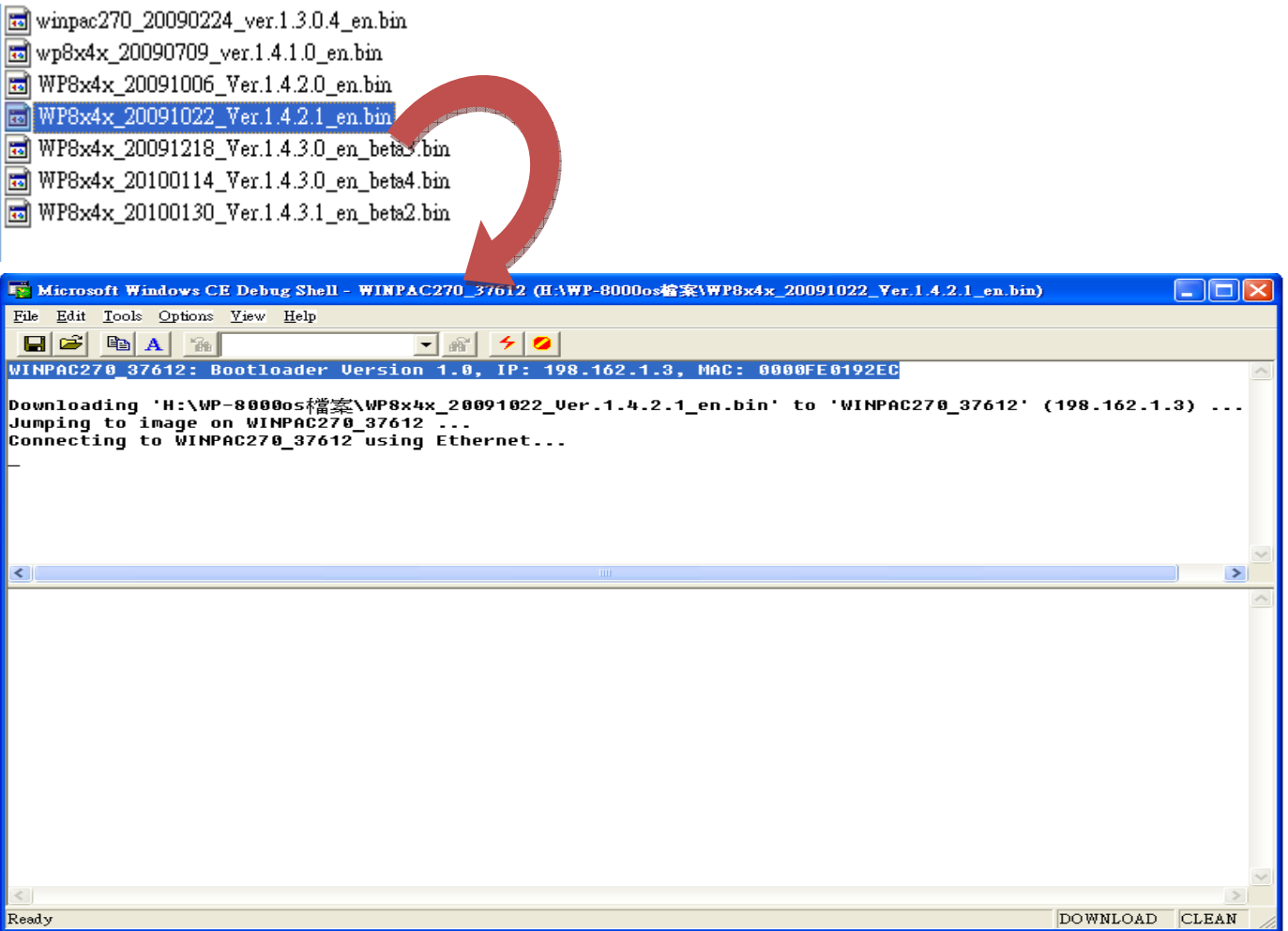


**Step 4:** Select the device which you want to update the OS image.



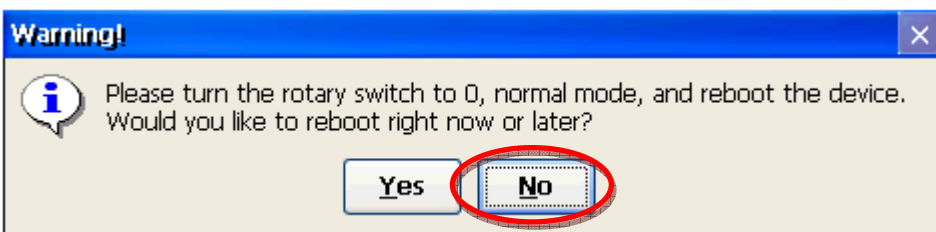
Classification	System and Application FAQ on WinCE PAC				No.	4-001-02	
Author	Tunglu-Yu	Version	1.0.2	Date	2010/07/04	Page	5/13

**Step 5:** Select the latest version of the OS image file.



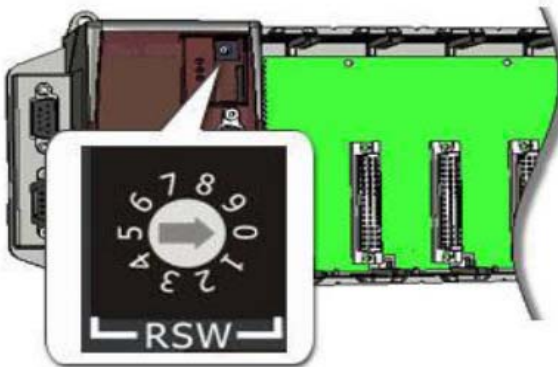
**Step 6:** Wait till the “Warning!” dialog box shows on WinPAC screen as below, click “No” to finish the process.

(If you update the older one OS to the latest, after reboot, please wait 5-10 minutes, the OS will format the System\_Disk and the monitor display will become white or black at this moment.)



Classification	System and Application FAQ on WinCE PAC				No.	4-001-02	
Author	Tunglu-Yu	Version	1.0.2	Date	2010/07/04	Page	6/13

**Step 7:** Turn the rotary switch to the “0” (if you update OS version 1.4.3.1. Please go to page 8).



### Important Warnings

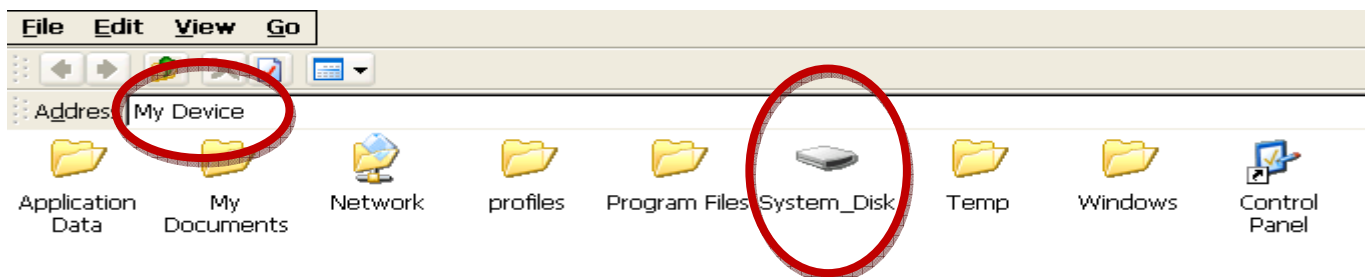


If you **reboot** at step 8~11, the WinPAC/ViewPC OS will read the registry of old OS. Please

1. Turn the rotary switch to the “1” and reboot the PAC.
2. Run the WinPAC/ViewPC Utility, and then click “File” -> “Save”.
3. Turn the rotary switch to the “0” and reboot the PAC.

After reboot, the WinPAC/ViewPC OS will read the registry of new OS.

**Step 8:** Make sure the System\_disk folder is in “My Device”.

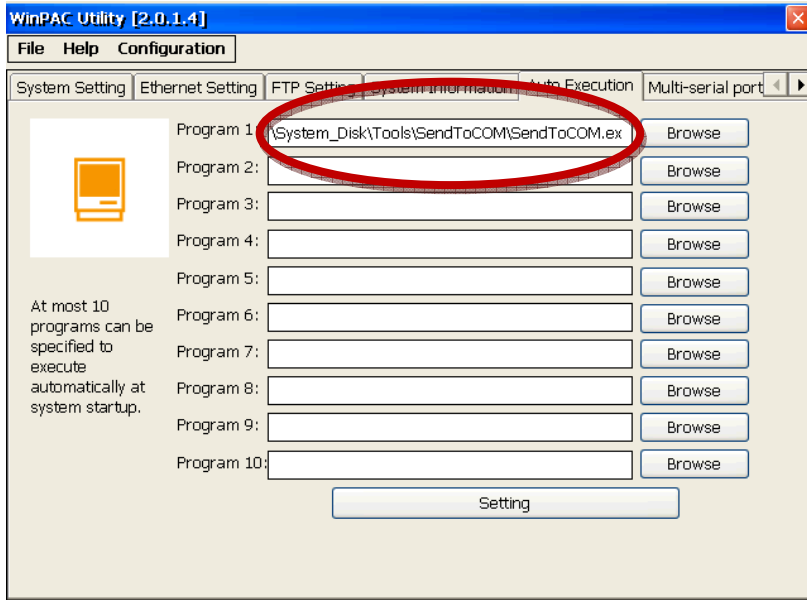


**Step 9:** Restore your backup data from Micro\_SD to the System\_Disk.

Classification	System and Application FAQ on WinCE PAC				No.	4-001-02	
Author	Tunglu-Yu	Version	1.0.2	Date	2010/07/04	Page	7/13

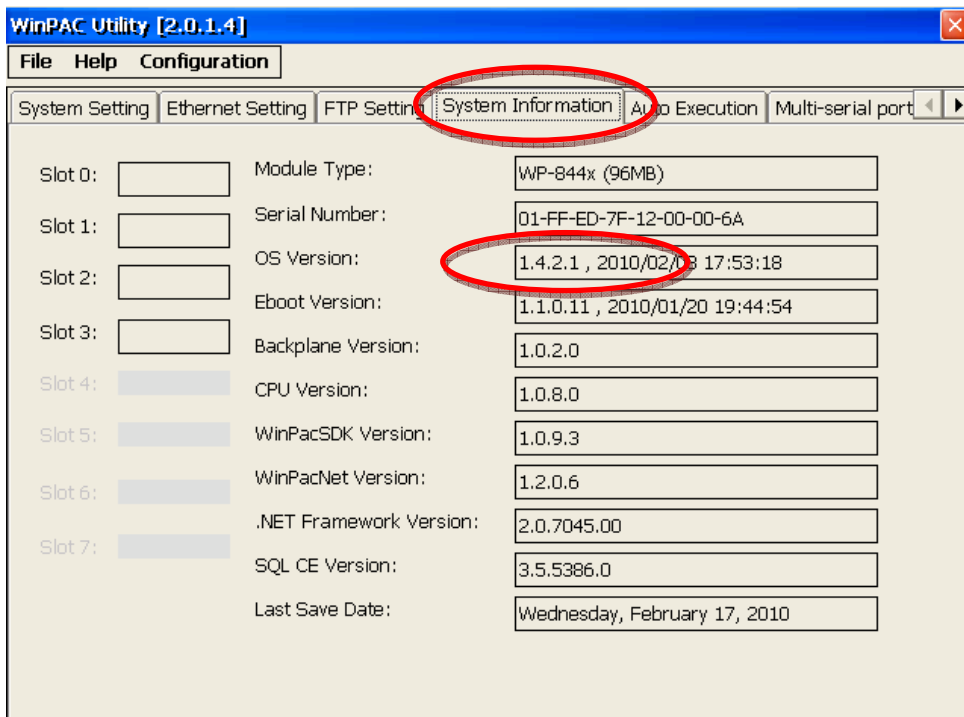
**Step 10: Restore your WinPAC settings.**

Start the WinPAC Utility on the desktop, and restore all settings (Example below).



**Step 11: Check the WinPAC OS version**

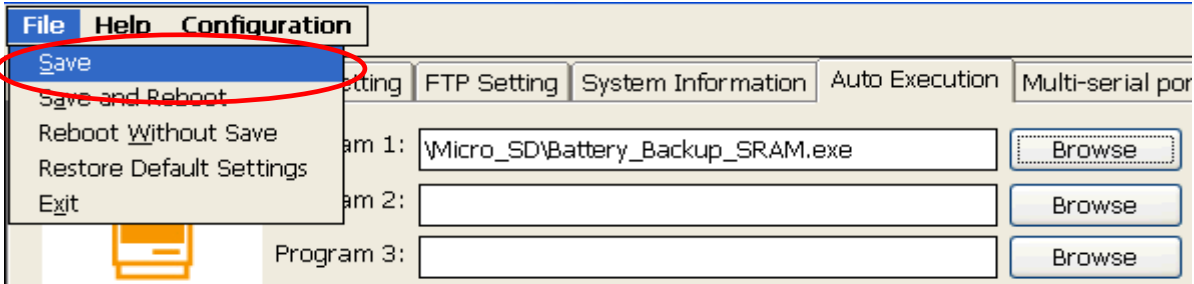
Start the WinPAC Utility, and then check the version of the OS on the “System Information” tab.



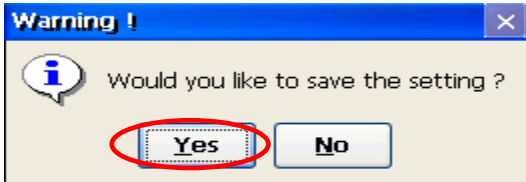
Classification	System and Application FAQ on WinCE PAC				No.	4-001-02	
Author	Tunglu-Yu	Version	1.0.2	Date	2010/07/04	Page	8/13

**Step 12: Save your WinPAC/ViewPC settings and registry key.**

12.1. Start the WinPAC/ViewPC Utility and click “File” -> “Save” to save the settings.



12.2. Click the “Yes” button.





Classification	System and Application FAQ on WinCE PAC				No.	4-001-02	
Author	Tunglu-Yu	Version	1.0.2	Date	2010/07/04	Page	9/13

# How to update OS image by Eshell (without DHCP server)

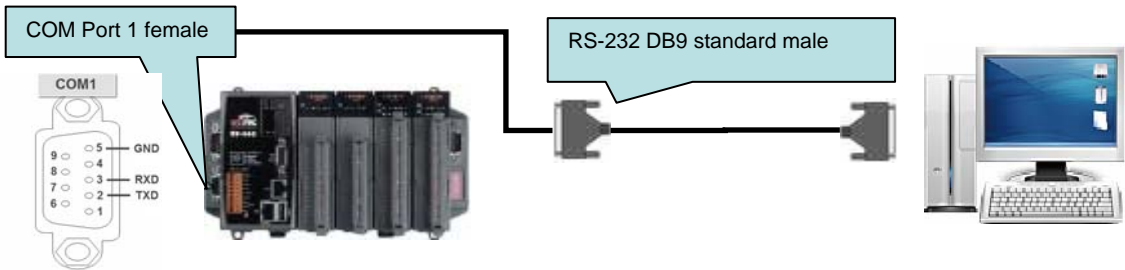
## Important Warnings

**!** The "ViewPAC" series do not have the debug port (COM1) to control the boot load. So, when you want to use the Eshell to update the OS for the ViewPAC, you need the DHCP server in the LAN network.

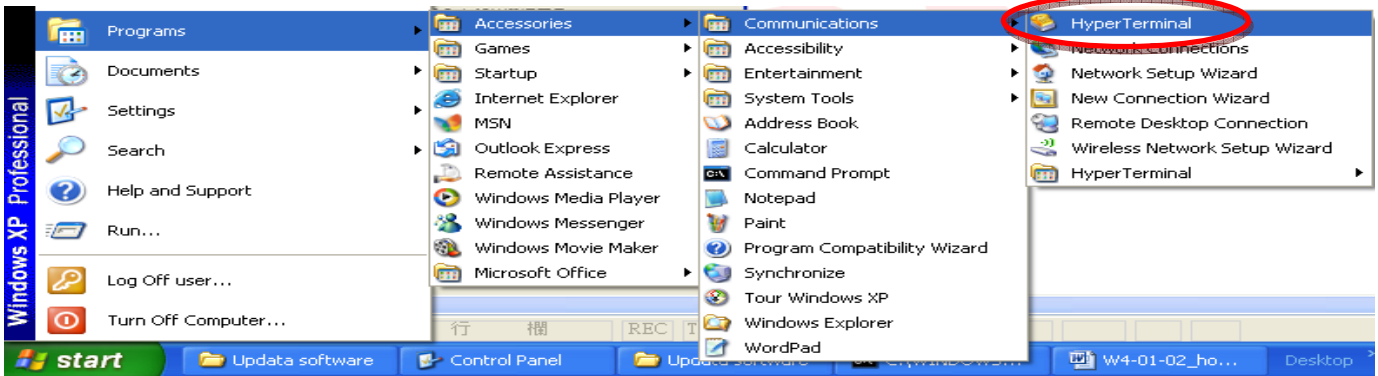
You still can update OS image by Eshell when your LAN network without DHCP service.

**Before updates OS, Please do below acts.**  
Connect PC and WinPAC by RS-232 serial.

1. Connect with COM1



2. Click start->Programs->Accessories->Communications->HyperTerminal.

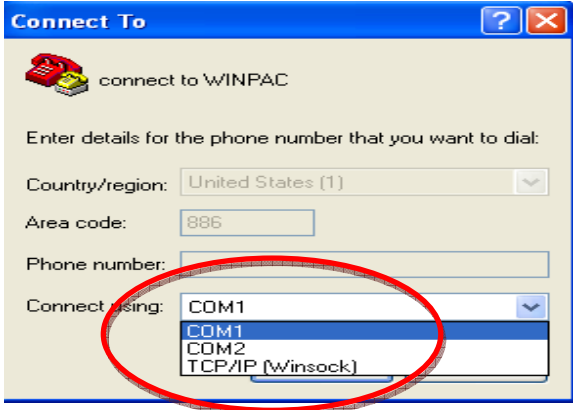


2.1. Key in the name of connection and click "OK".

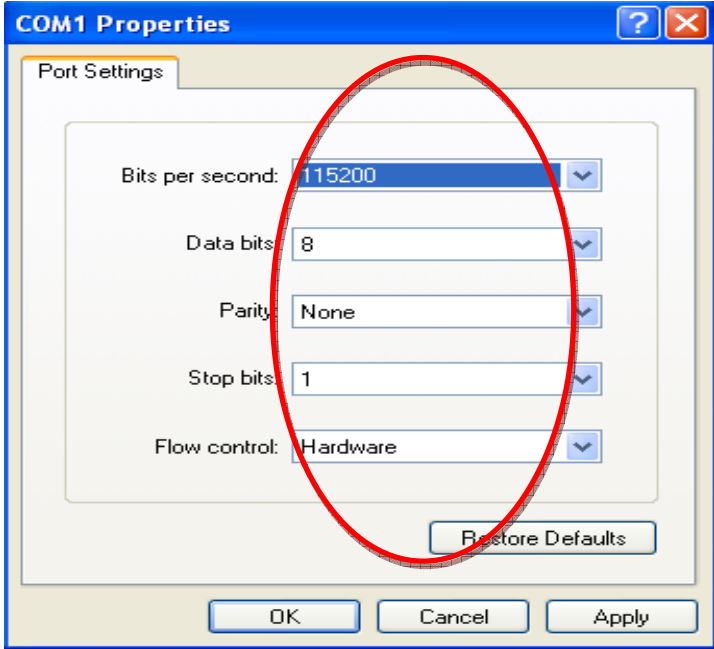


Classification	System and Application FAQ on WinCE PAC				No.	4-001-02	
Author	Tunglu-Yu	Version	1.0.2	Date	2010/07/04	Page	10/13

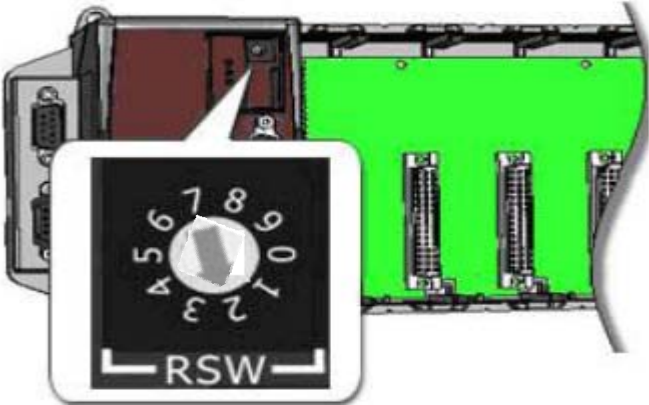
2.2. Select the COM Port connects with WinPAC.



2.3. Set connection Configure according to below and click “OK”.



3. Turn the rotary switch to the “2” position and reboot.



Classification	System and Application FAQ on WinCE PAC				No.	4-001-02	
Author	Tunglu-Yu	Version	1.0.2	Date	2010/07/04	Page	11/13

4. Press "SPACE" button on Keyboard.

connect to WINPAC - HyperTerminal

File Edit View Call Transfer Help

```

MfgCode=00000089          DeviceID=0000001D
Flash type 00000001
Flash type J3

dwLcdVGA 0x0
LAN1 MAC Addr: 00-00-FE-01-92-EC
LAN2 MAC Addr: 00-00-EE-11-6A-00
Press [ENTER] to download now or [SPACE] to cancel.
Initiating image download in 4 seconds.

```

connect to WINPAC - HyperTerminal

File Edit View Call Transfer Help

```

dwLcdVGA 0x0
LAN1 MAC Addr: 00-00-FE-01-92-EC
LAN2 MAC Addr: 00-00-EE-11-6A-00
Press [ENTER] to download now or [SPACE] to cancel.
Initiating image download in 1 seconds.
Ethernet Boot Loader Configuration:
0) IP address: 192.168.255.1
1) Subnet mask: 255.255.255.0
2) # bootme's: 25
3) Boot delay: 2 seconds
4) DHCP: Enabled
5) Reset to factory default configuration
6) Download new image at startup
7) Program RAM image into FLASH (Enabled)
8) Program LAN1 MAC address: 00-00-FE-01-92-EC
9) Program LAN2 MAC address: 00-00-EE-11-6A-00
V) Current display type is 0:Depend on Registry (0~6)
D) Download image now

```

5. Pass "4" and pass "0" input static IP address (According to static IP of PC).

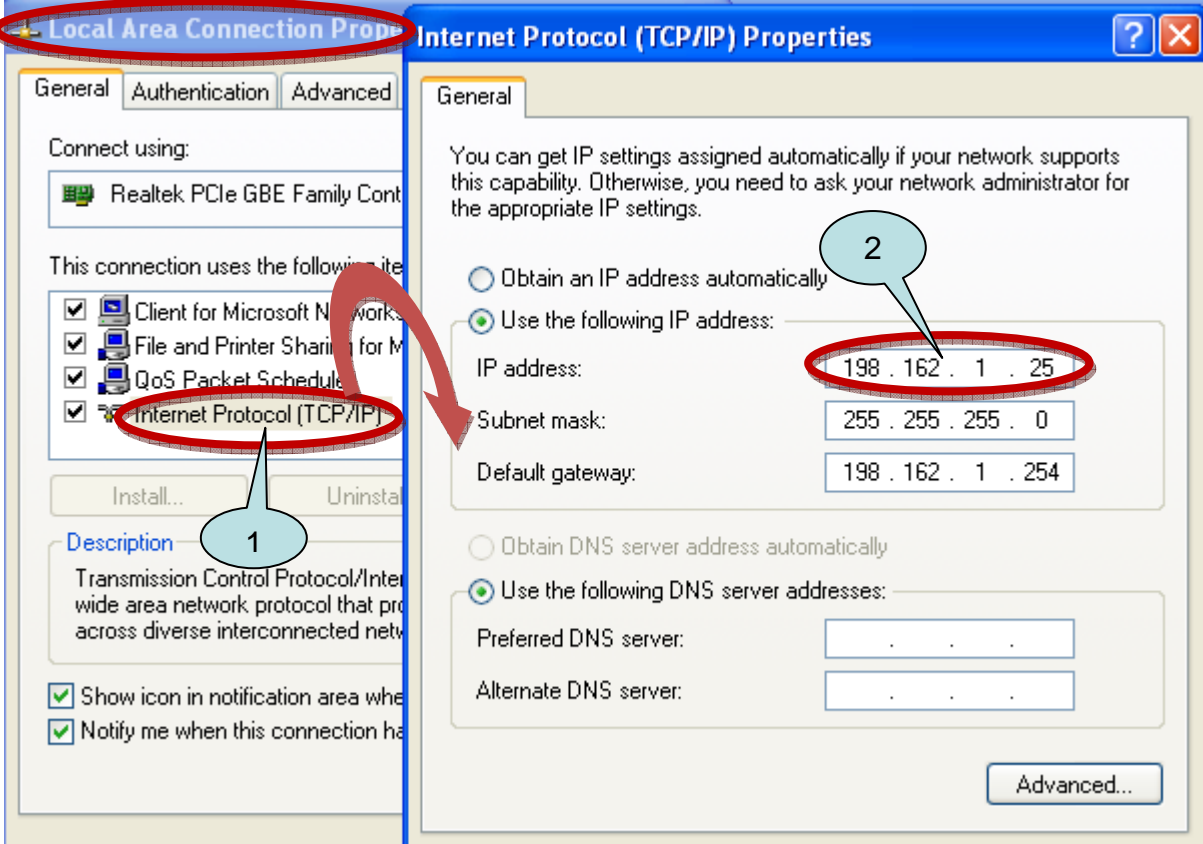
### Tips & Warnings



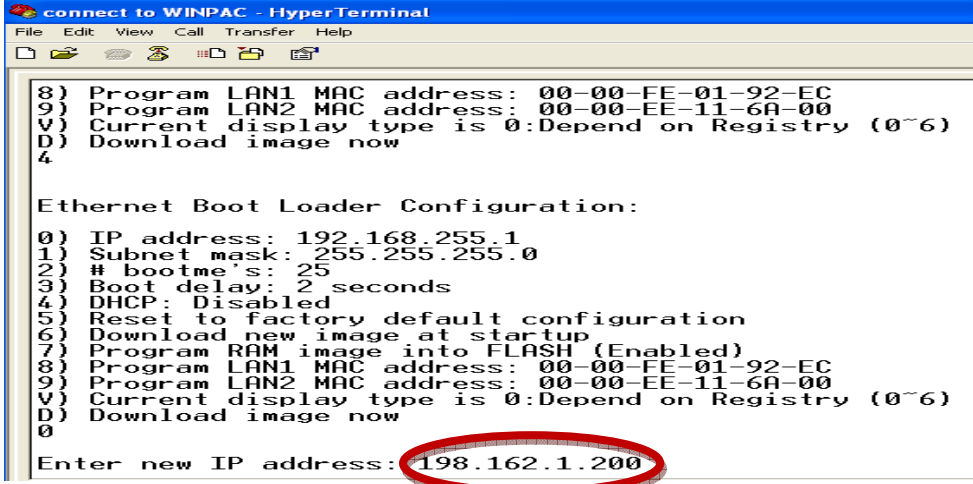
PC has to set Static IP, too.

Classification	System and Application FAQ on WinCE PAC				No.	4-001-02	
Author	Tunglu-Yu	Version	1.0.2	Date	2010/07/04	Page	12/13

5.1. Set the IP address for WinPAC according to the IP of Local Area Connection on PC (Example: 198.162.1.25).



5.2 You can use the IP 198.162.1.0 to 254(except 25).



6. Pass "d" to save all settings and Reboot.

7. Go to page 1 to update the OS.

Classification	System and Application FAQ on WinCE PAC				No.	4-001-02	
Author	Tunglu-Yu	Version	1.0.2	Date	2010/07/04	Page	13/13

## Revision History

Revision	Date	Description
1.0.2	2013/07/04	NEW: Added support information for WP-5000 and VP-4131.
1.0.0	2010/02/12	Initial release