

Classification	System and Application FAQ on WinCE PAC				No.	2-023-00	
Author	Tunglu-Yu	Version	1.0.0	Date	2013/05/16	Page	Author

How to assign specified application program to function key on VP-2xWx

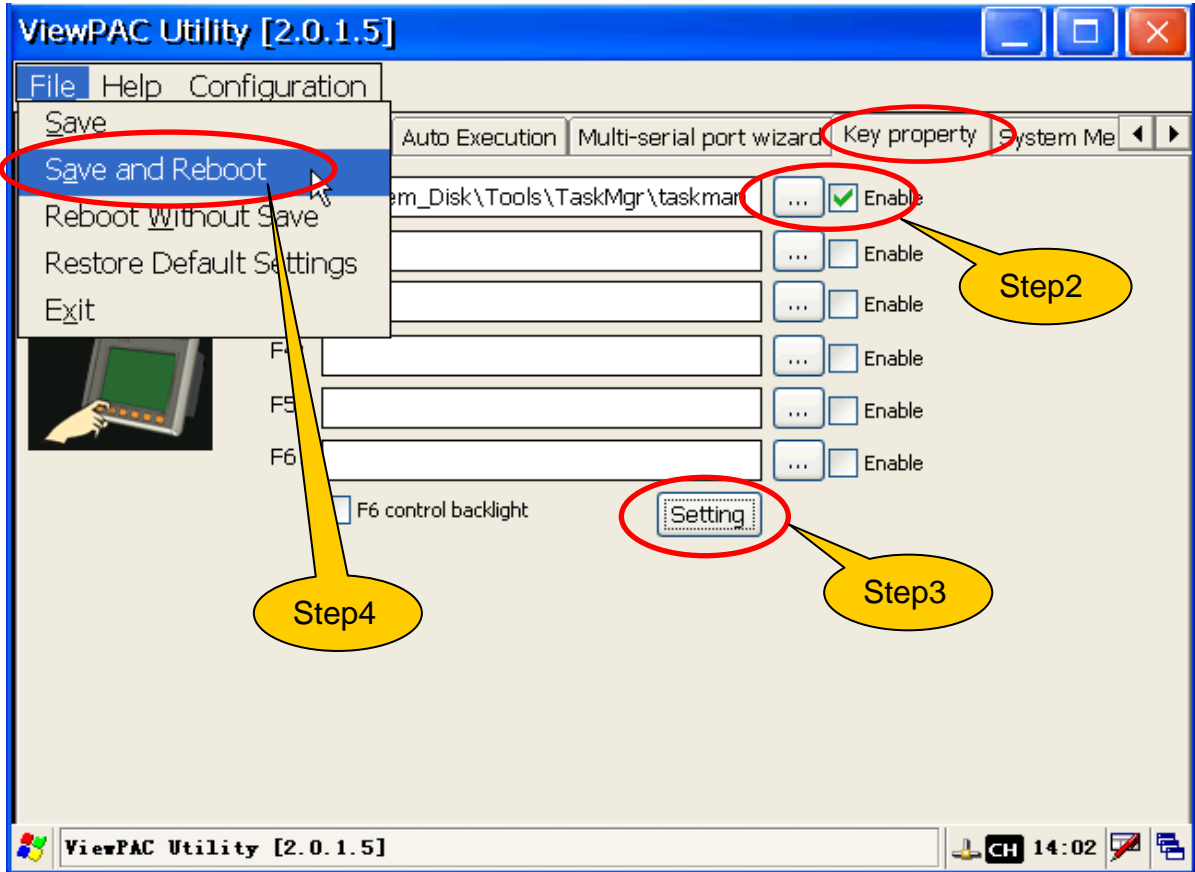
Applies to:

Platform	OS version	WinPAC/ViewPAC utility version
WP-8x3x/ WP-8x4x	N/A	N/A
VP-25W1	V1.1.0.1 and later	V2.0.1.5 and later
VP-23W1	V1.1.0.2 and later	V2.0.1.5 and later
VP-4131	N/A	N/A

N/A: Not applicable to this platform and OS.

The VP-23W1 and VP-25W1 have 6 function key F1 ~ F6 to be set to run specified application programs. Please follow the steps below to perform settings:

- Step1:** Execute ViewPAC Utility, it needs the version 2.0.1.5 and later.
- Step2:** On the "Key property" tab, press the "... " button after the Fn to select the program, and check the Enable checkbox near the "... " button to enable the function.
- Step3:** Click the "Setting" button.
- Step4:** Click "Save and Reboot" from File menu.



Classification	System and Application FAQ on WinCE PAC				No.	2-023-00	
Author	Tunglu-Yu	Version	1.0.0	Date	2013/05/16	Page	Author

Revision History

Revision	Date	Description
1.0.0	2013/05/16	Initial release