

Classification	System and Application FAQ on WinCE PAC				No.	2-019-00	
Author	Tunglu-Yu	Version	1.0.0	Date	2013/05/16	Page	1/5

## How to Add a PPPoE Dial-up Connection

*Applies to:*

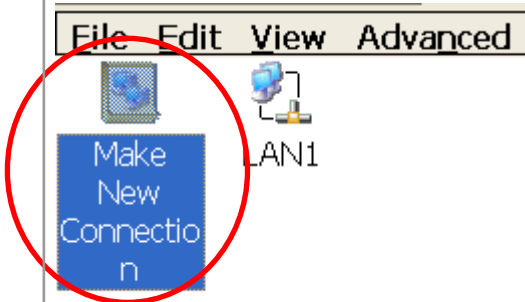
<b>Platform</b>	<b>OS version</b>	<b>WinPAC/ViewPAC utility version</b>
WP-8x4x	V1.7.0.1 and later	<i>All versions</i>
WP-8x3x	V1.6.0.0 and later	
WP-5000	V1.3.0.0 and later	
VP-25Wx	V2.3.0.0 and later	
VP-23Wx	V2.4.1.0 and later	
VP-413x	V2.4.1.0 and later	

The WinCE PAC supports PPPoE Dial-up connection. Please perform the follow steps:

Step 1: Click the Start menu -> Settings -> Control Panel, and then double-click the icon for "Network and Dial-up connections" in the control panel.

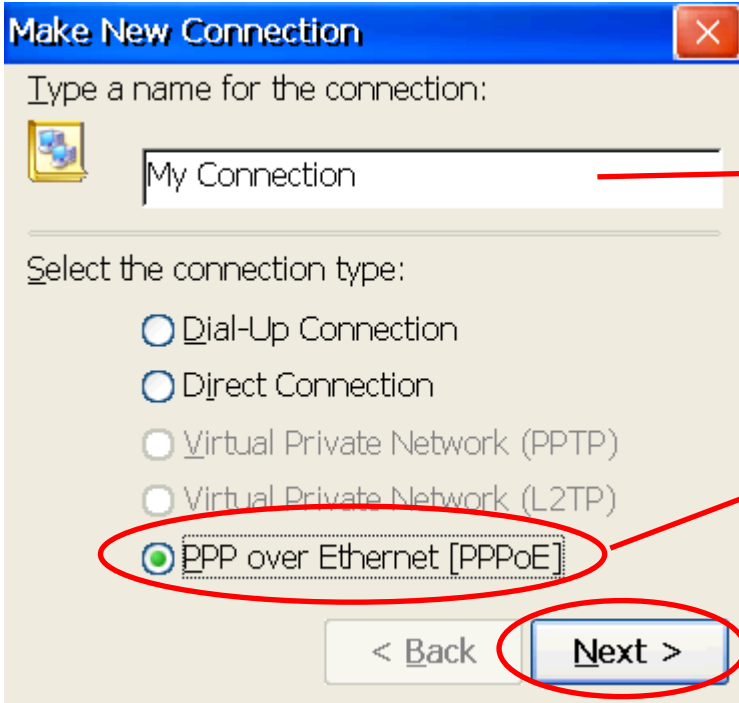


Step 2: Double-click the icon for "Make New Connection".



Classification	System and Application FAQ on WinCE PAC				No.	2-019-00	
Author	Tunglu-Yu	Version	1.0.0	Date	2013/05/16	Page	2/5

Step 3: In the "Make New Connection" dialog box, enter a name for the connection, select the "PPP over Ethernet (PPPoE)" option as the connection type, and then click the "Next" button.

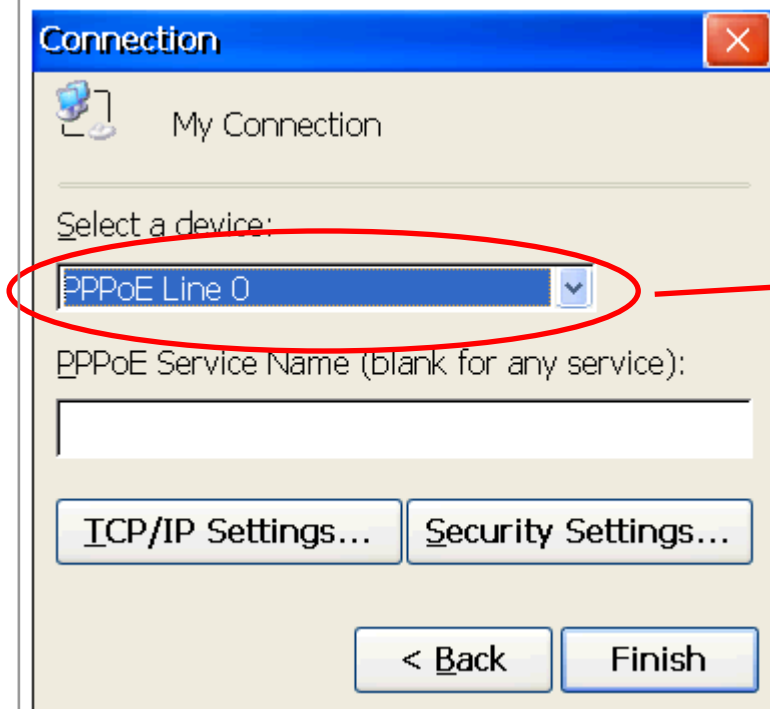


1. Enter a name for your connection

2. Check "PPP over Ethernet (PPPoE)"

3. Click Next

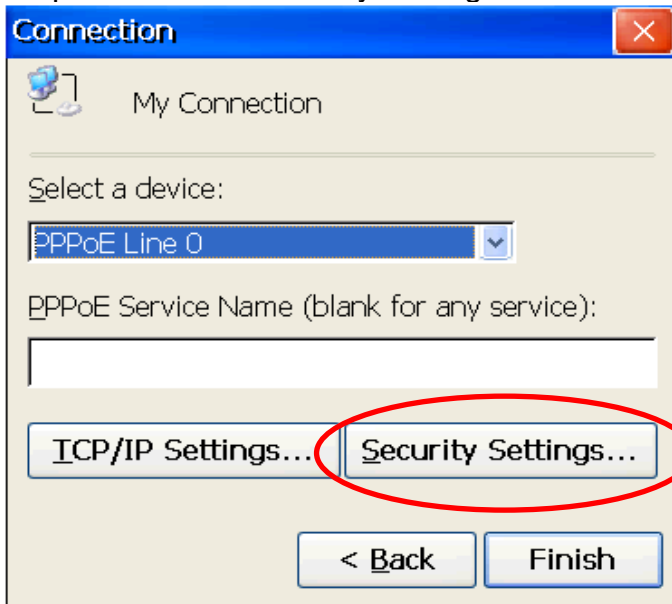
Step 4: In the "Select a device" drop-down menu, select the "PPPoE Line 0" option indicated as the dial-up connection from LAN1, select the "PPPoE Line 1" option indicated as the dial-up connection from LAN2.



Select the Dial-up connection from LAN1/ LAN2

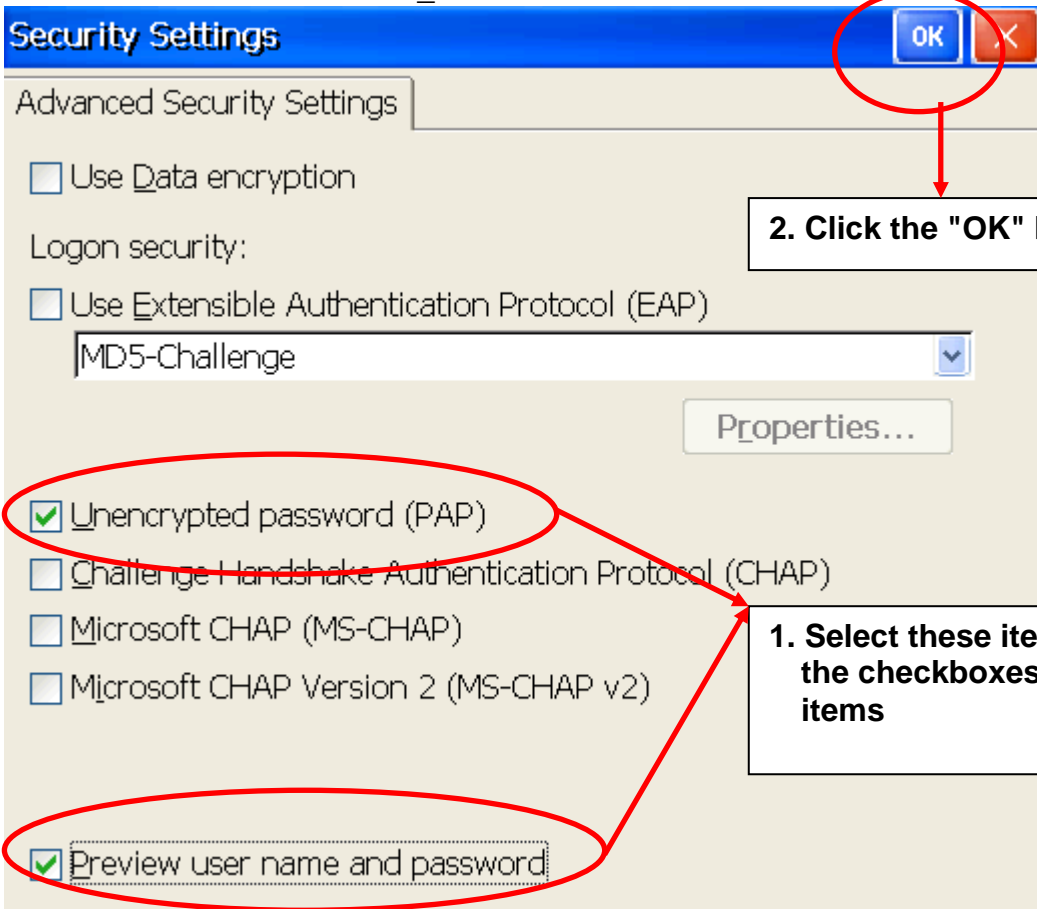
Classification	System and Application FAQ on WinCE PAC				No.	2-019-00	
Author	Tunglu-Yu	Version	1.0.0	Date	2013/05/16	Page	3/5

Step 5: Click the "Security Settings" button.



Click the "Security Settings" button

Step 6: In the "Security Settings" dialog box, check the "Unencrypted password (PAP)" and the "Preview user name and password" items, and clear checkboxes for all other items, then click the "OK" button.

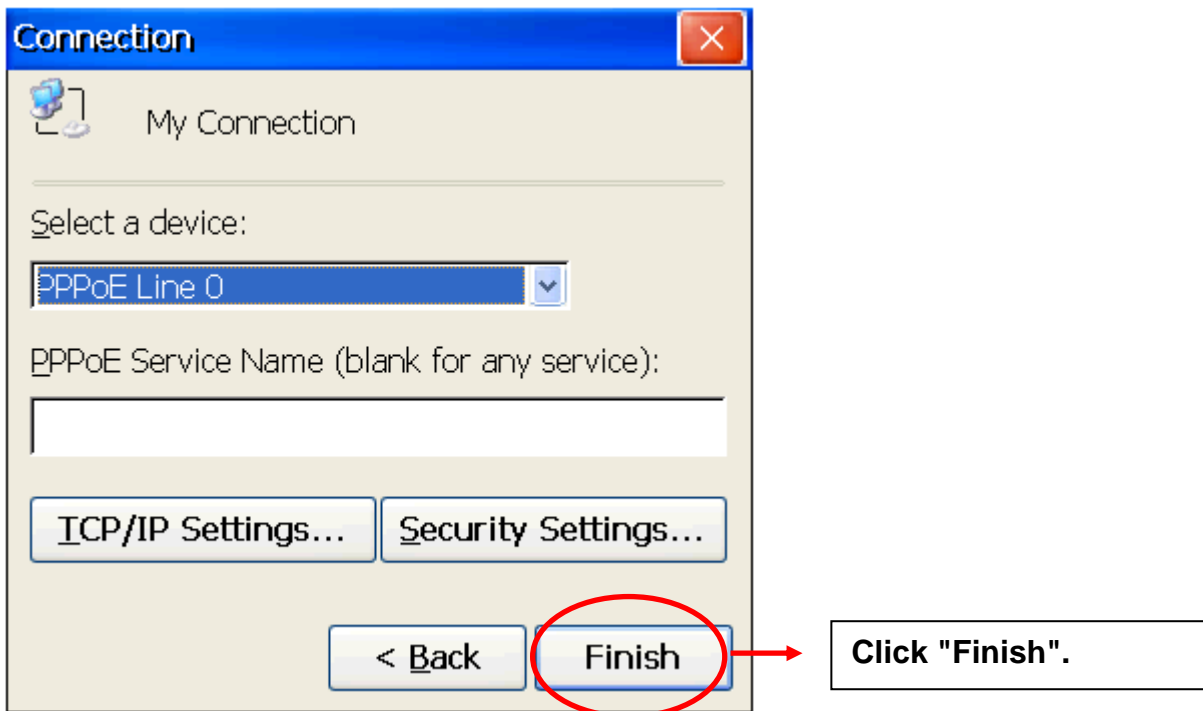


2. Click the "OK" button

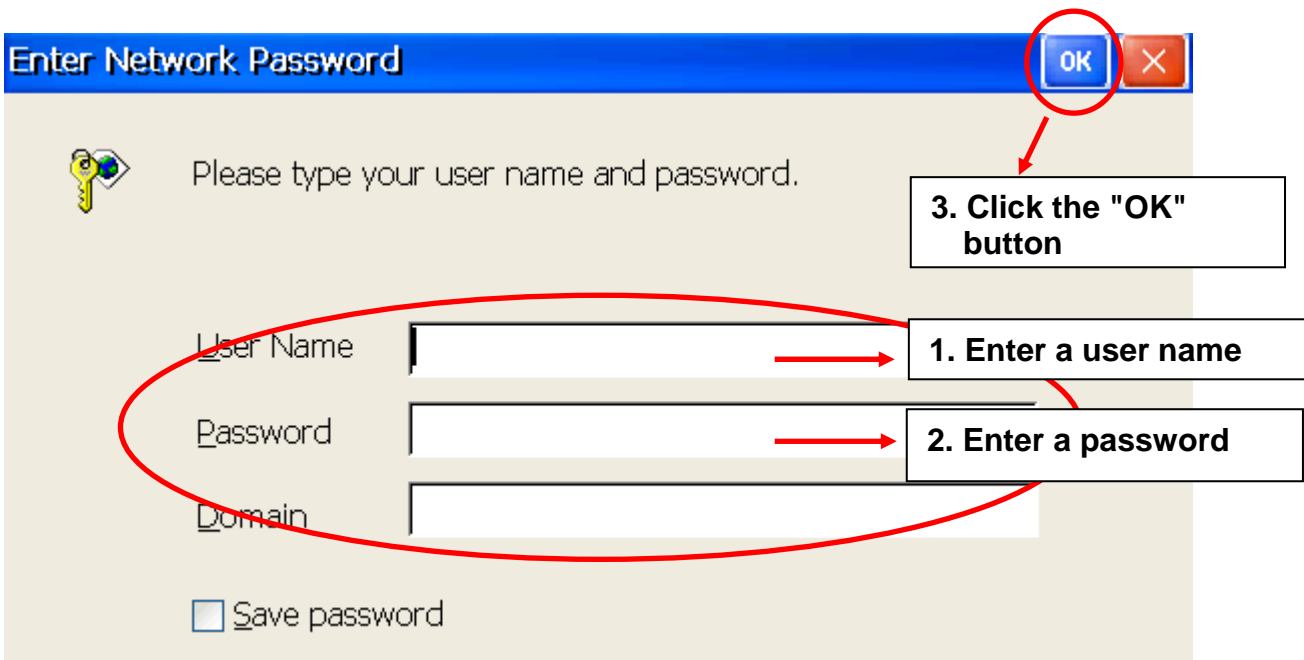
1. Select these items, and clear the checkboxes for all other items

Classification	System and Application FAQ on WinCE PAC				No.	2-019-00	
Author	Tunglu-Yu	Version	1.0.0	Date	2013/05/16	Page	4/5

Step 7: Click the "Finish" button to save the settings and complete the creation of the new connection.

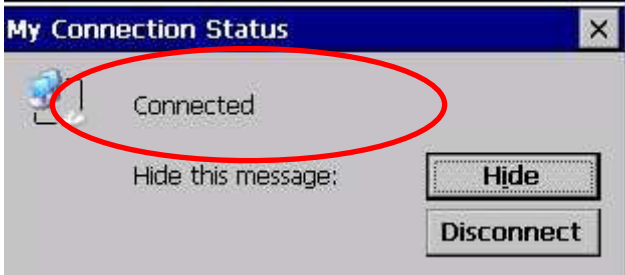


Step 8: In the Network settings window, double-click the icon for the new "PPPoE" connection and then enter a user name and password in the login window. If you wish to save the password for future use, check the "Save password" checkbox. Click the "OK" button to establish a connection.



Classification	System and Application FAQ on WinCE PAC				No.	2-019-00	
Author	Tunglu-Yu	Version	1.0.0	Date	2013/05/16	Page	5/5

Step 9: A status window will be displayed with the message "Connected", indicating that the connection was successfully established.



### Revision History

Revision	Date	Description
1.0.0	2013/05/16	Initial release