

Classification	System and Application FAQ on WinCE PAC				No.	2-018-00	
Author	Tunglu-Yu	Version	1.0.0	Date	2013/05/16	Page	1/3

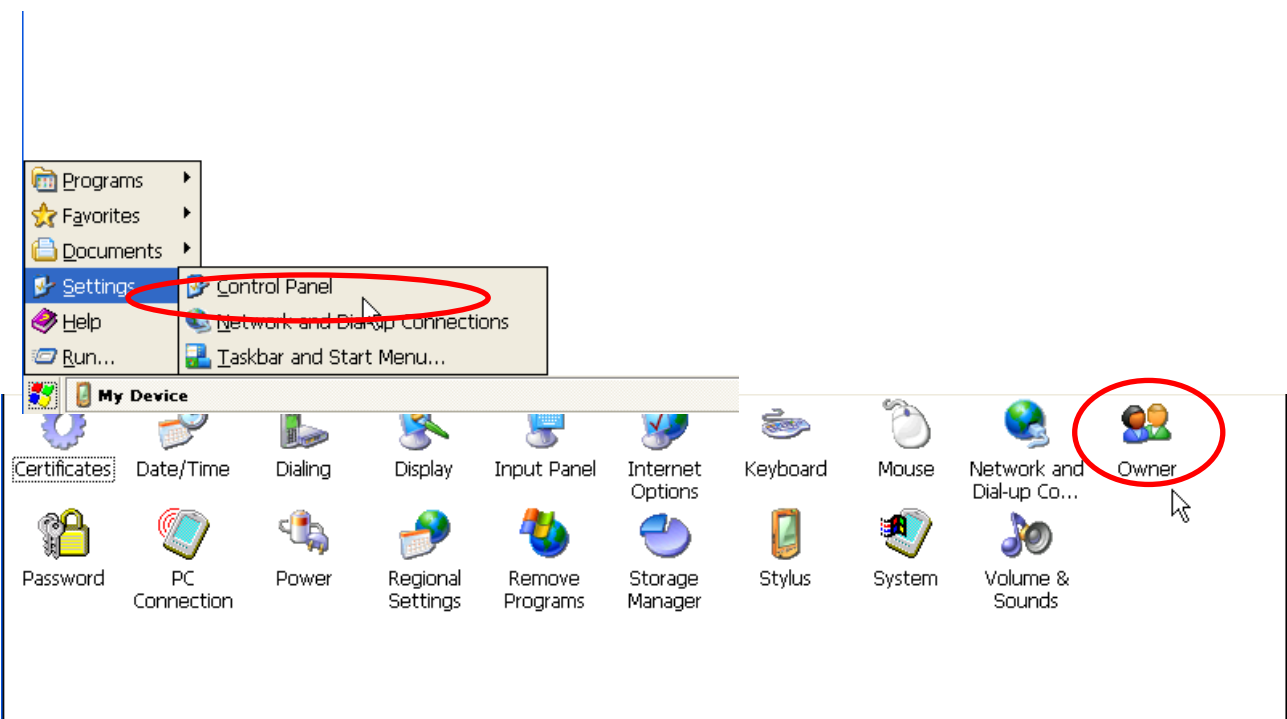
How to use the Network ID (User name/Password/Domain) to access to network resources

Applies to:

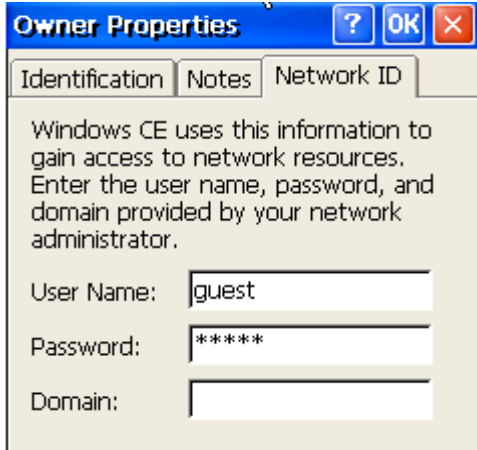
Platform	OS version	WinPAC/ViewPAC utility version
WinPAC series	All versions (WinCE5)	All versions
ViewPAC series	All versions (WinCE5)	All versions

Please perform the follow step to access to network resources.

Step 1: Click Start -->Control Panel-->Owner

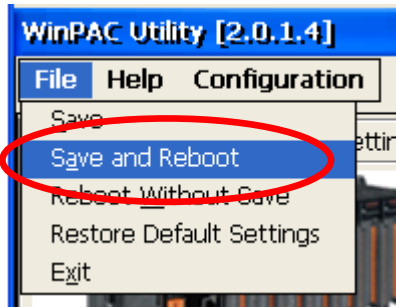


Step 2: On the Network ID tab, input the user name, Password and Domain



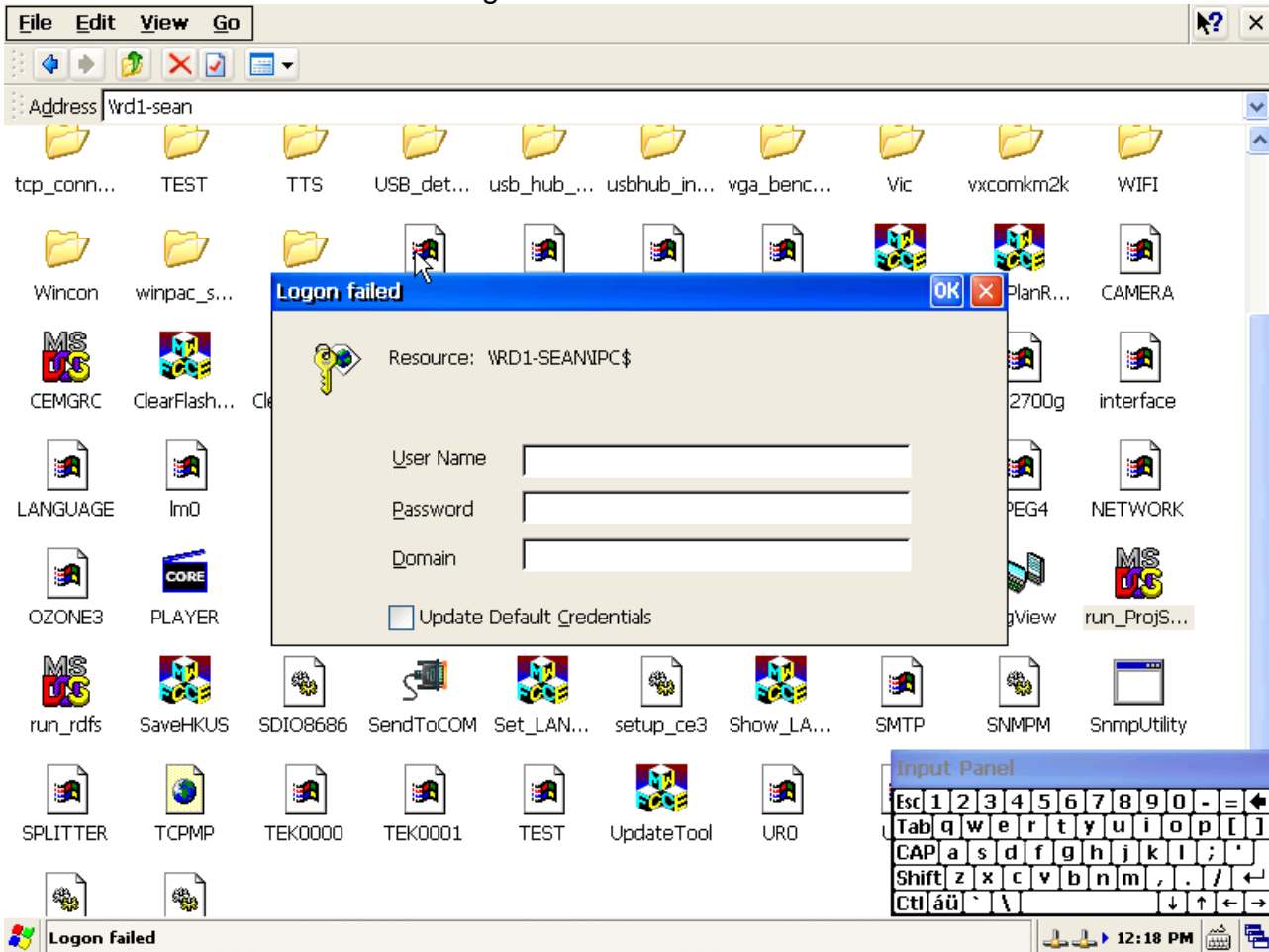
Classification	System and Application FAQ on WinCE PAC				No.	2-018-00	
Author	Tunglu-Yu	Version	1.0.0	Date	2013/05/16	Page	2/3

Step 3: Click the “File” -> “Save and Reboot” item to reboot the WinPAC/ViewPAC



Step 4: Double click the icon for My Device on the desktop, click View -> Address Bar on the top toolbar. Enter the name for the computer in LAN in the Address bar, such as [\\rd1-sean](#) and then press Enter to login.

If the User name, Password and Domain is correct for this computer, the WinCE PAC can login. If not, a login dialog box will ask you to input the User Name, Password and Domain shown as following.



Classification	System and Application FAQ on WinCE PAC				No.	2-018-00	
Author	Tunglu-Yu	Version	1.0.0	Date	2013/05/16	Page	3/3

Revision History

Revision	Date	Description
1.0.0	2013/05/16	Initial release