

Classification	System and Application FAQ on WinCE PAC				No.	2-007-00	
Author	Tunglu-Yu	Version	1.0.1	Date	2013/08/16	Page	1/7

How to add a shortcut to the desktop and programs

Applies to:

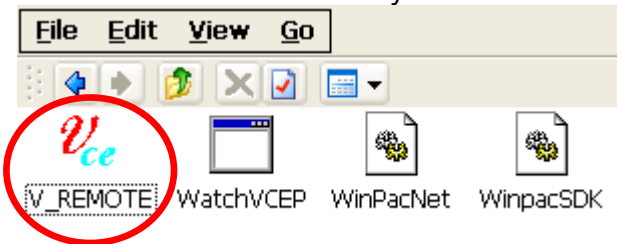
Platform	OS version	WinPAC/ViewPAC utility version
WP-8x3x/ WP-8x4x	All versions	All versions
WP-5000	All versions	All versions
VP-23W1/ VP-25W1	All versions	All versions
VP-4131	All versions	All versions

Here we discuss how to add a shortcut to the desktop and start menu that can be saved after power off and on in part1, and how to delete the shortcut(s) in part2.

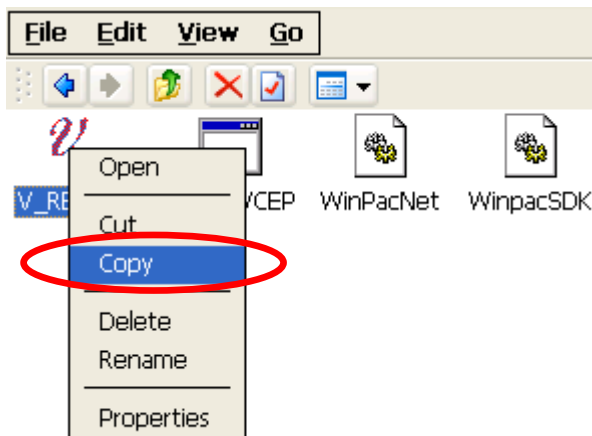
Part 1. Adding a shortcut to the desktop

Step 1: Create a shortcut.

1.1. Select the file for which you want create a shortcut.



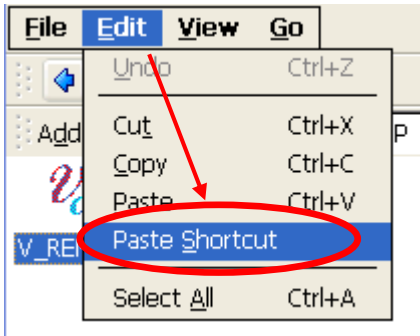
1.2. Right click the file name and then click "Copy".



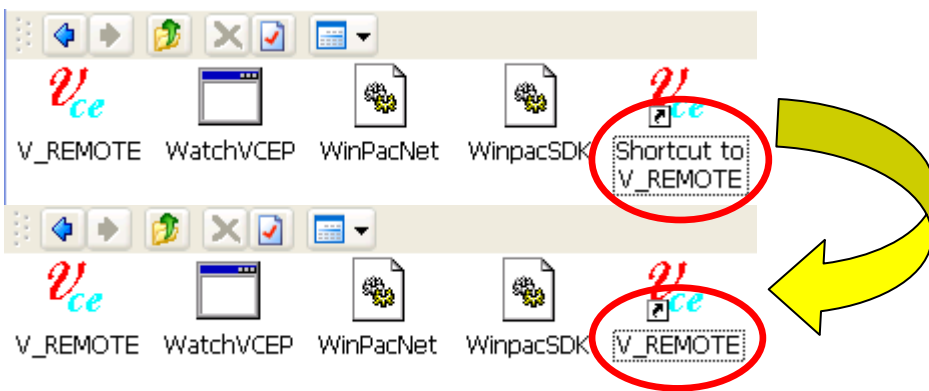
1.3. Click the "Edit" menu option and then click "Paste Shortcut".



Classification	System and Application FAQ on WinCE PAC				No.	2-007-00	
Author	Tunglu-Yu	Version	1.0.1	Date	2013/08/16	Page	2/7



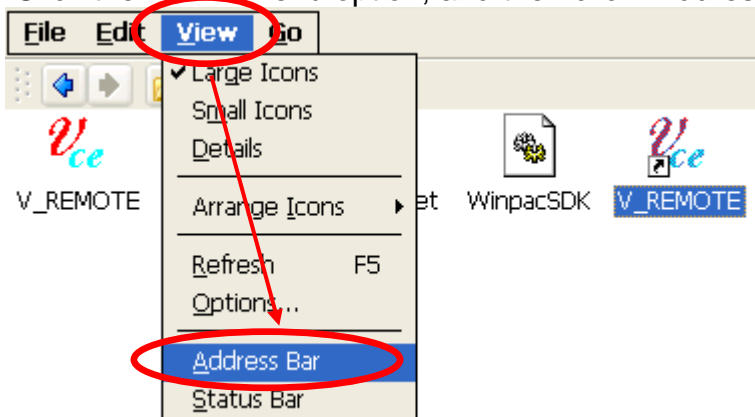
1.4. Rename the shortcut "shortcut to xx.ink" into "xx.ink"



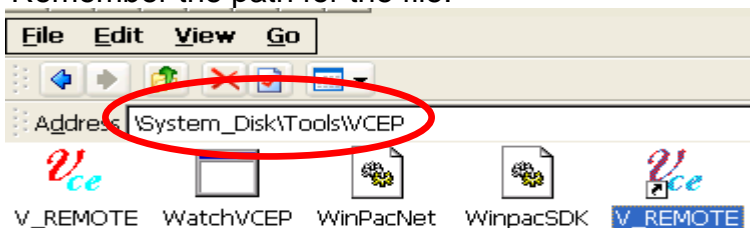
Step 2: Add the shortcut to the desktop and programs menu.

2.1. Get the path for the shortcut.

- a. Click the "View" menu option, and then click "Address Bar".



- b. Remember the path for the file.



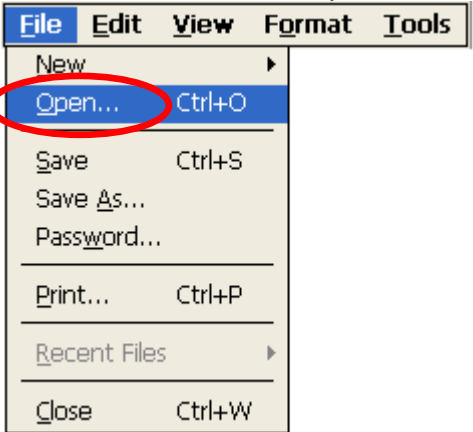
Classification	System and Application FAQ on WinCE PAC				No.	2-007-00	
Author	Tunglu-Yu	Version	1.0.1	Date	2013/08/16	Page	3/7

2.2. Open “Autolnit.bat” file with using Microsoft WordPad.

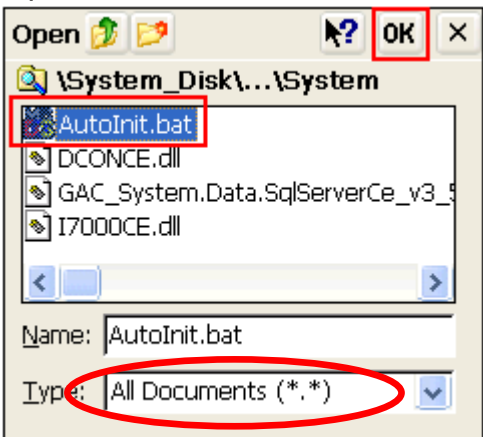
a. Double Click the Microsoft WordPad icon on the desktop.



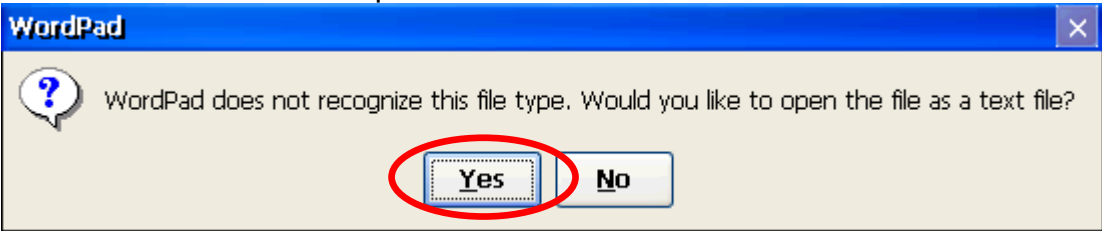
b. Click the “File” menu option, and then click the “Open” item.



c. Open the “Autolnit.bat” file from the ”\System_Disk\ICPDAS\System” folder.



d. Click the “Yes” button to open the file.



Classification	System and Application FAQ on WinCE PAC				No.	2-007-00	
Author	Tunglu-Yu	Version	1.0.1	Date	2013/08/16	Page	4/7

2.3. Add the shortcut information to “Autolnit.bat”.

The screenshot shows a Notepad window with the following text:

```

copy \\System_Disk\\Tools\\WinPAC_Utility\\WINPAC_Utility.lnk \\Windows\\Desktop
copy \\System_Disk\\Tools\\WinPAC_Utility\\WINPAC_Utility.lnk \\Windows\\Programs
copy \\System_Disk\\Tools\\RegistryViewer\\RegView.lnk \\Windows\\Desktop
copy \\System_Disk\\Tools\\RegistryViewer\\RegView.lnk \\Windows\\Programs
copy \\System_Disk\\Tools\\TaskMgr\\TaskMgr.lnk \\Windows\\Desktop
copy \\System_Disk\\Tools\\TaskMgr\\TaskMgr.lnk \\Windows\\Programs
copy \\System_Disk\\Tools\\ISQLW35\\isqlw35.lnk \\Windows\\Desktop
copy \\System_Disk\\Tools\\ISQLW35\\isqlw35.lnk \\Windows\\Programs
copy \\System_Disk\\Tools\\WinPAC_Utility\\WINPAC_Utility.lnk \\Windows\\@à±
copy \\System_Disk\\Tools\\WinPAC_Utility\\WINPAC_Utility.lnk \\Windows\\μ{;|¶°
copy \\System_Disk\\Tools\\RegistryViewer\\RegView.lnk \\Windows\\@à±
copy \\System_Disk\\Tools\\RegistryViewer\\RegView.lnk \\Windows\\μ{;|¶°
copy \\System_Disk\\Tools\\TaskMgr\\TaskMgr.lnk \\Windows\\@à±
copy \\System_Disk\\Tools\\TaskMgr\\TaskMgr.lnk \\Windows\\μ{;|¶°
copy \\System_Disk\\Tools\\ISQLW35\\isqlw35.lnk \\Windows\\@à±
copy \\System_Disk\\Tools\\ISQLW35\\isqlw35.lnk \\Windows\\μ{;|¶°
copy \\System_Disk\\Tools\\WinPAC_Utility\\WINPAC_Utility.lnk \\Windows\\×ÀÃæ
copy \\System_Disk\\Tools\\WinPAC_Utility\\WINPAC_Utility.lnk \\Windows\\³ÏÈð
copy \\System_Disk\\Tools\\RegistryViewer\\RegView.lnk \\Windows\\×ÀÃæ
copy \\System_Disk\\Tools\\RegistryViewer\\RegView.lnk \\Windows\\³ÏÈð
copy \\System_Disk\\Tools\\TaskMgr\\TaskMgr.lnk \\Windows\\×ÀÃæ
copy \\System_Disk\\Tools\\TaskMgr\\TaskMgr.lnk \\Windows\\³ÏÈð
copy \\System_Disk\\Tools\\ISQLW35\\isqlw35.lnk \\Windows\\×ÀÃæ
copy \\System_Disk\\Tools\\ISQLW35\\isqlw35.lnk \\Windows\\³ÏÈð
copy \\System_Disk\\Tools\\VCEP\\v_remote.lnk \\Windows\\Desktop
copy \\System_Disk\\Tools\\VCEP\\v_remote.lnk \\Windows\\Programs

```

Callout boxes provide the following information:

- Path for the shortcut file.** (points to the source path in the highlighted lines)
- Name of the shortcut file.** (points to the destination path in the highlighted lines)
- Copy the shortcut file to the Desktop folder and the Programs** (points to the destination path in the highlighted lines)

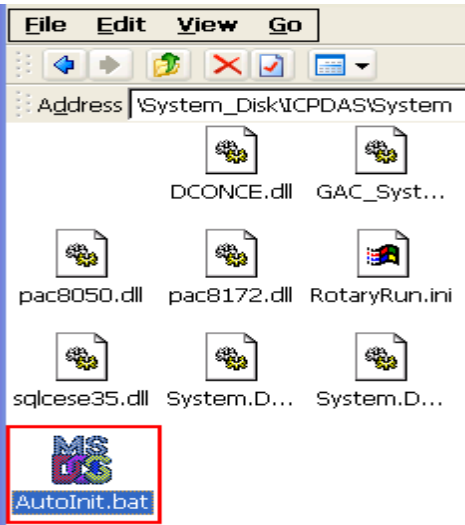
2.4. Click “File”, and then click “Save” to save the edit.

The screenshot shows the File menu with the following options:

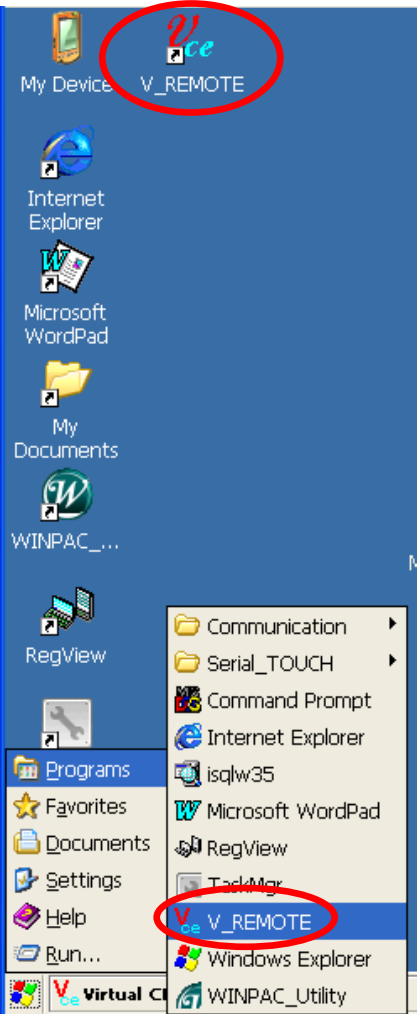
- New
- Open... Ctrl+O
- Save Ctrl+S** (highlighted with a red box)
- Save As...
- Password...
- Print... Ctrl+P
- Recent Files
- Close Ctrl+W

Classification	System and Application FAQ on WinCE PAC				No.	2-007-00	
Author	Tunglu-Yu	Version	1.0.1	Date	2013/08/16	Page	5/7

2.5. Double click the “**AutoInit.bat**” file icon in the “\System_Disk\ICPDAS\System” folder.



The shortcut files will appear on the “Desktop” and in the “Programs” menu.

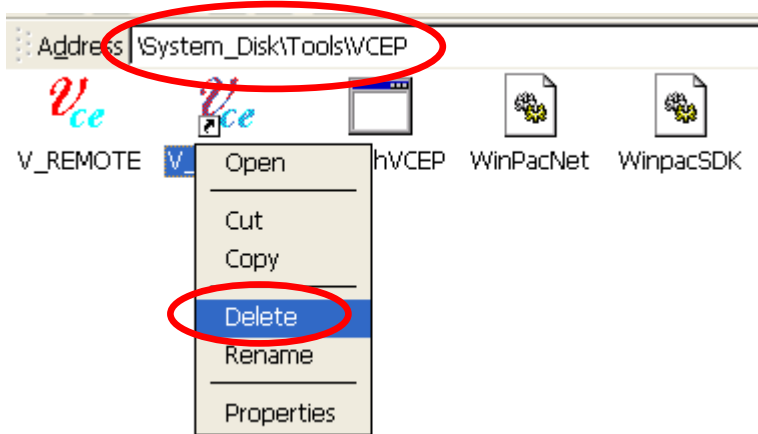


Classification	System and Application FAQ on WinCE PAC				No.	2-007-00	
Author	Tunglu-Yu	Version	1.0.1	Date	2013/08/16	Page	6/7

Part 2. Removing a shortcut on the desktop

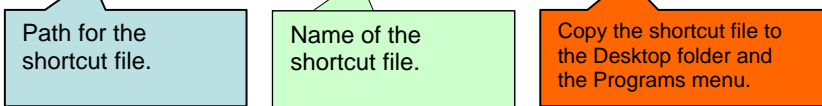
To remove the shortcut(s) on the desktop and the programs menu, you need to delete the shortcut file created and the related information in "Autolnit.bat" file.

Step 1. Go to the location of the Shortcut file and delete it.



Step 2. Delete the item information from the Autolnit.bat file.

```
copy \System_Disk\Tools\RegistryViewer\RegView.lnk \Windows\AAæ
copy \System_Disk\Tools\RegistryViewer\RegView.lnk \Windows\IDð
copy \System_Disk\Tools\TaskMgr\TaskMgr.lnk \Windows\AAæ
copy \System_Disk\Tools\TaskMgr\TaskMgr.lnk \Windows\IDð
copy \System_Disk\Tools\SQLW35\sqlw35.lnk \Windows\AAæ
copy \System_Disk\Tools\SQLW35\sqlw35.lnk \Windows\IDð
copy \System_Disk\Tools\WCEP\v_remote.lnk \Windows\Desktop
copy \System_Disk\Tools\WCEP\v_remote.lnk \Windows\Programs
```



```
copy \System_Disk\Tools\RegistryViewer\RegView.lnk \Windows\AAæ
copy \System_Disk\Tools\RegistryViewer\RegView.lnk \Windows\IDð
copy \System_Disk\Tools\TaskMgr\TaskMgr.lnk \Windows\AAæ
copy \System_Disk\Tools\TaskMgr\TaskMgr.lnk \Windows\IDð
copy \System_Disk\Tools\SQLW35\sqlw35.lnk \Windows\AAæ
copy \System_Disk\Tools\SQLW35\sqlw35.lnk \Windows\IDð
```

Remove

Step 3. Save the file and reboot the device.

Classification	System and Application FAQ on WinCE PAC				No.	2-007-00	
Author	Tunglu-Yu	Version	1.0.1	Date	2013/08/16	Page	7/7

Revision History

Revision	Date	Description
1.0.1	2013/08/16	NEW: Added support information for WP-5000 and VP-4131.
1.0.0	2010/02/12	Initial release