

| | | | | | | | |
|----------------|---|---------|-------|------|------------|----------|-----|
| Classification | System and Application FAQ on WinCE PAC | | | | No. | 1-008-00 | |
| Author | Tunglu-Yu | Version | 1.0.1 | Date | 2013/08/06 | Page | 1/9 |

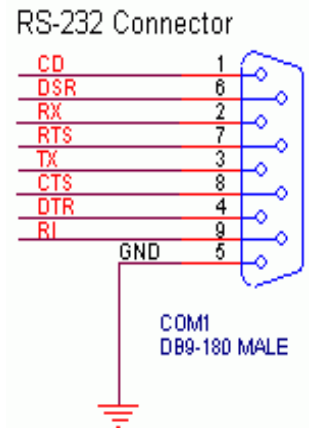
How to set up the I-7560 on WinPAC/ViewPAC

Applies to:

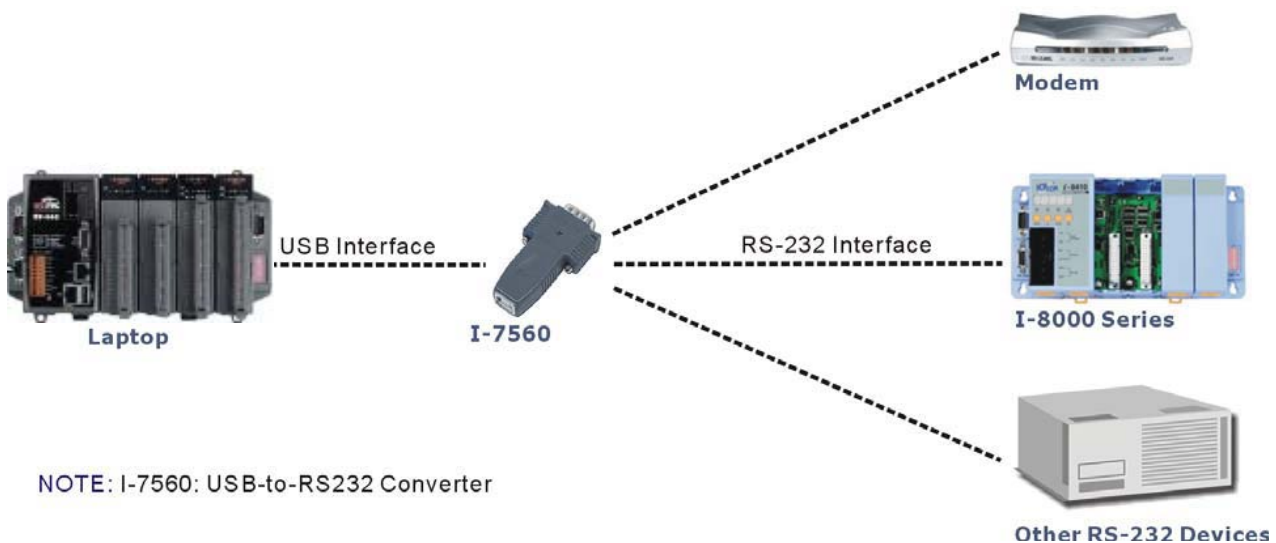
| Platform | OS version | WinPAC/ViewPAC utility version |
|------------------|--------------|--------------------------------|
| WP-8x3x/ WP-8x4x | All versions | All versions |
| WP-5000 | All versions | All versions |
| VP-23W1/ VP-25W1 | All versions | All versions |
| VP-4131 | All versions | All versions |

About I-7560:

I-7560 is a USB-RS232 converter, it features a full set of RS-232 modem data and control signals (TxD, RxD, RTS, CTS, DSR, DTR, DCD, RI, and GND) on its PC compatible DB9 male connector and also provides a high-speed 115.2 Kb/s transmission rate. No external power supply is required as I-7560 takes its power from the USB bus.

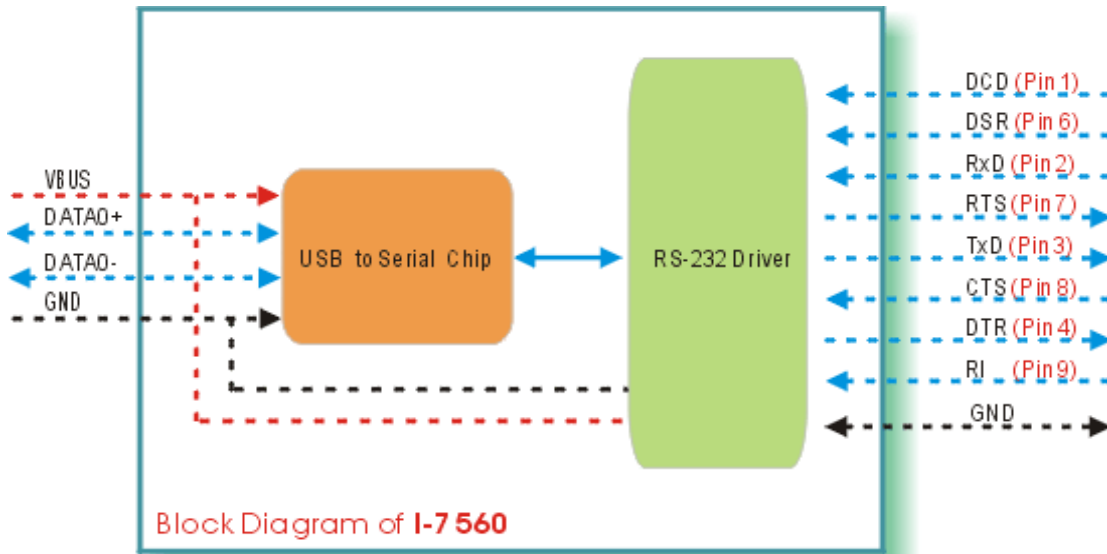


Application:



| | | | | | | | |
|----------------|---|---------|-------|------|------------|----------|-----|
| Classification | System and Application FAQ on WinCE PAC | | | | No. | 1-008-00 | |
| Author | Tunglu-Yu | Version | 1.0.1 | Date | 2013/08/06 | Page | 2/9 |

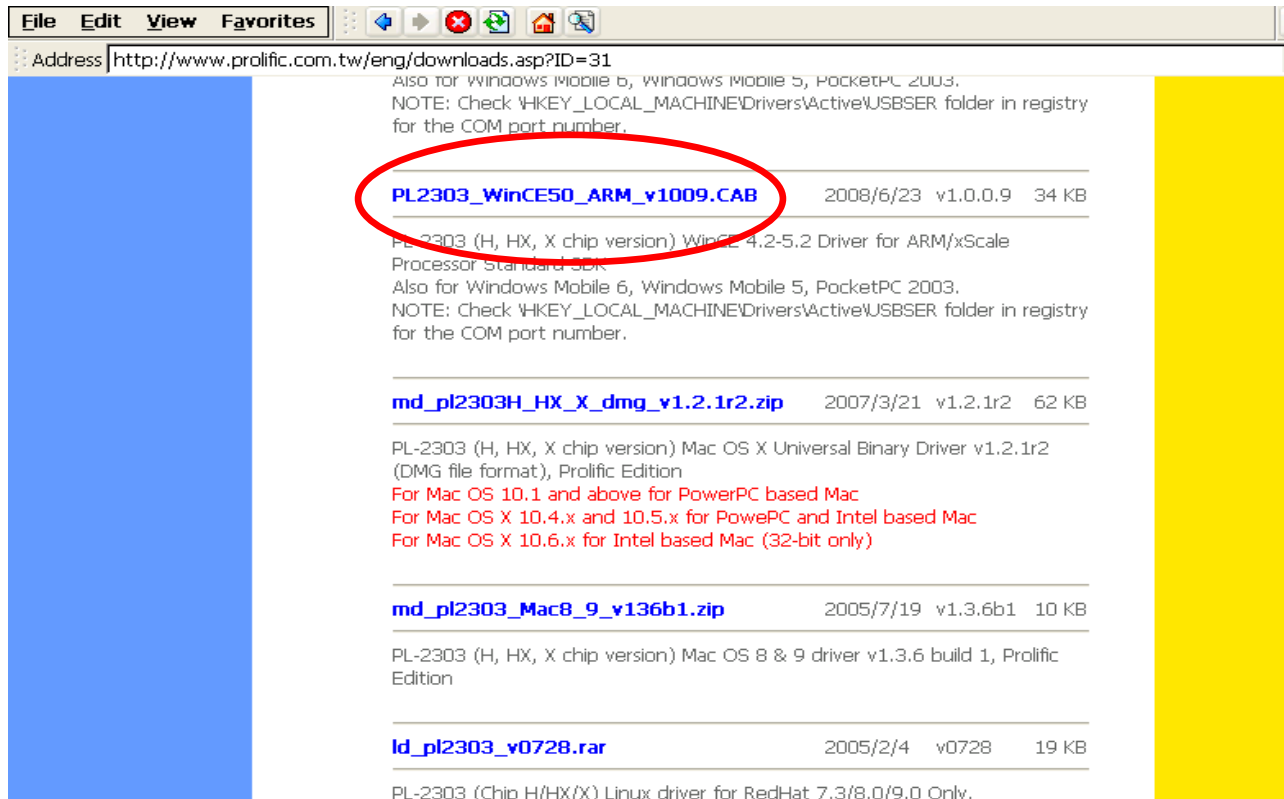
Block Diagram.



To set the I-7560

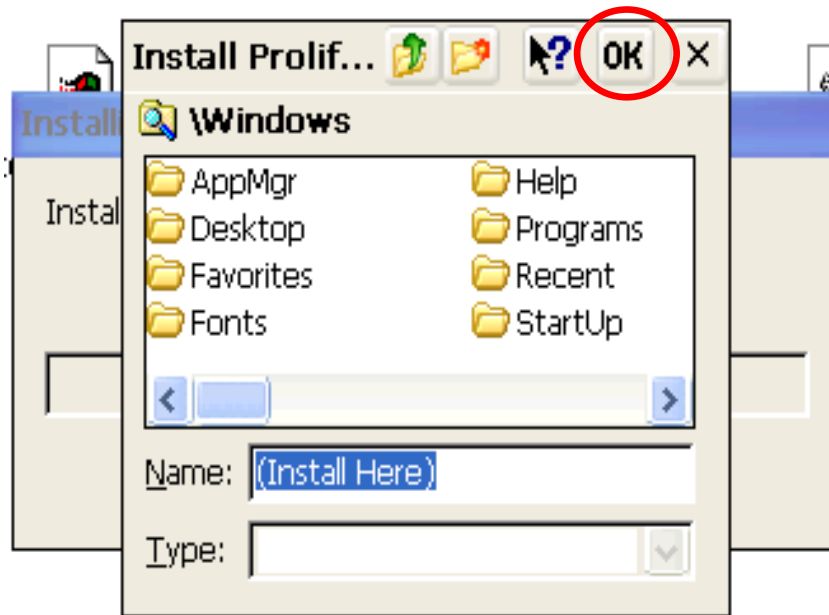
Step 1: Install the device driver.

1.1. Download the driver file “**PL2303_WinCE50_ARM_v1009.CAB**” from <http://www.prolific.com.tw/eng/downloads.asp?ID=31> to WinPAC/ViewPAC.

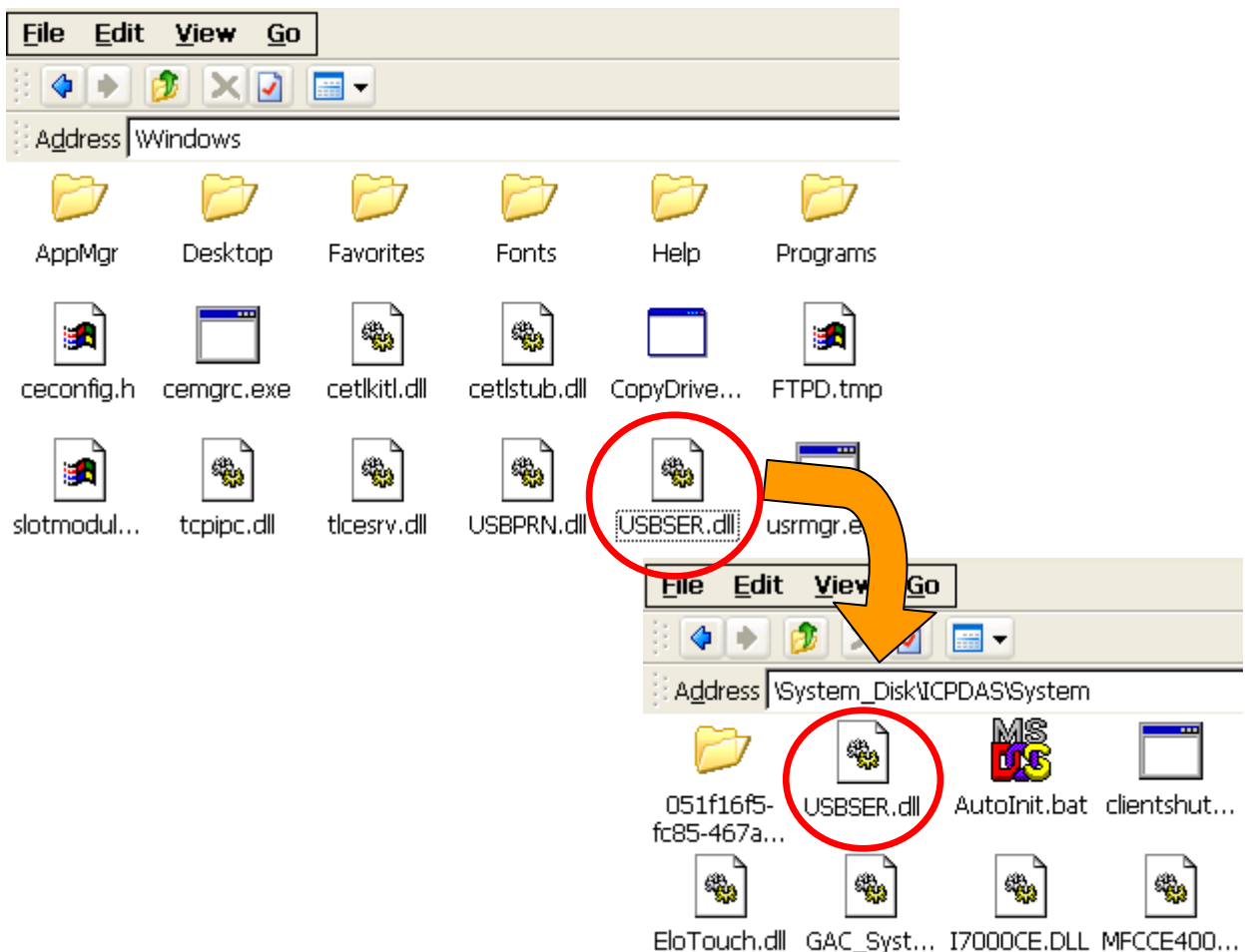


| | | | | | | | |
|----------------|---|---------|-------|------|------------|----------|-----|
| Classification | System and Application FAQ on WinCE PAC | | | | No. | 1-008-00 | |
| Author | Tunglu-Yu | Version | 1.0.1 | Date | 2013/08/06 | Page | 3/9 |

1.2. Double click the driver file “**PL2303_WinCE50_ARM_v1009.CAB**” and click “**OK**”.



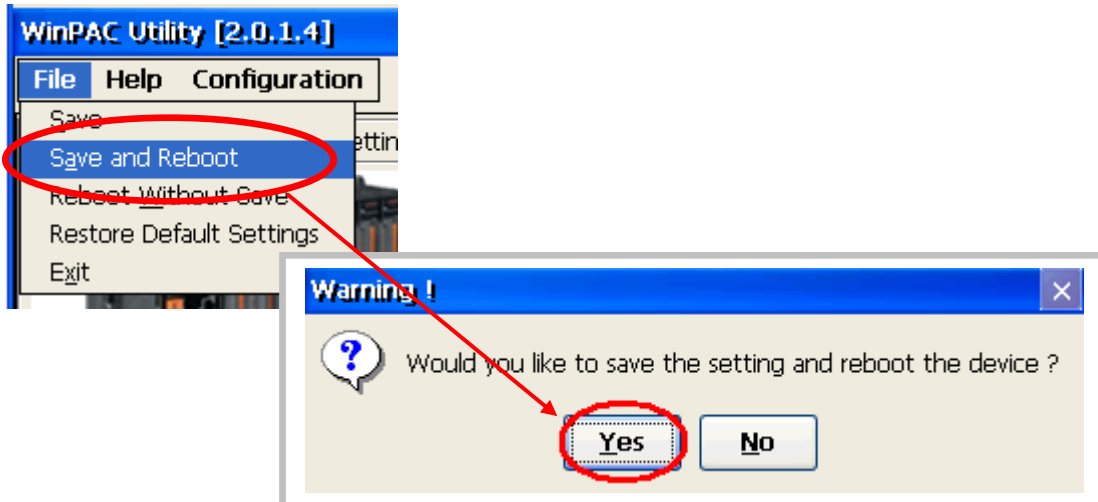
1.3. Copy the “**USBSER.dll**” from “\Windows” to “\System_Disk\ICPDAS\System”.



| | | | | | | | |
|----------------|---|---------|-------|------|------------|----------|-----|
| Classification | System and Application FAQ on WinCE PAC | | | | No. | 1-008-00 | |
| Author | Tunglu-Yu | Version | 1.0.1 | Date | 2013/08/06 | Page | 4/9 |

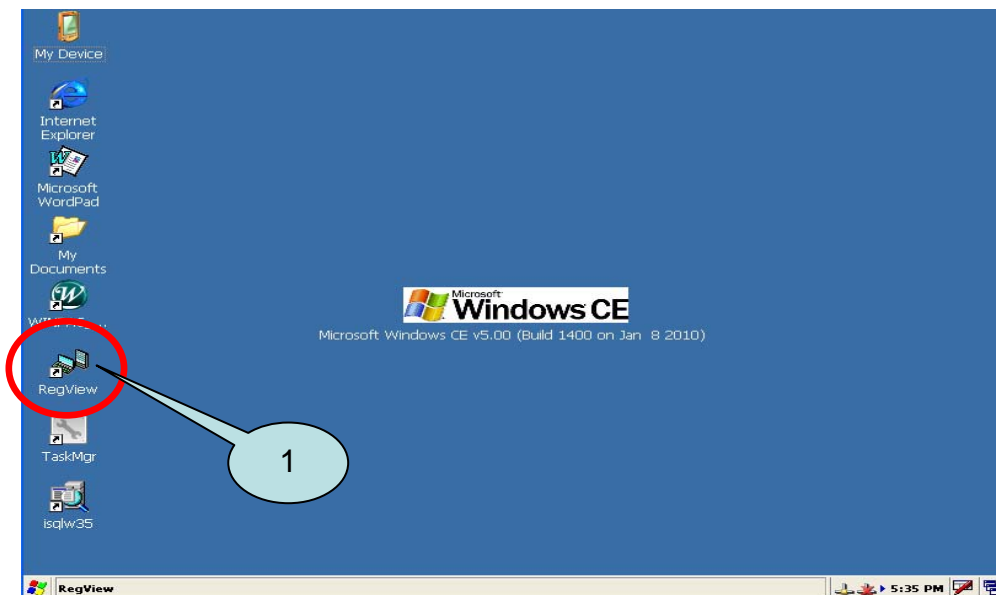
Step 2: Save and Reboot your WinPAC.

- 2.1. Start the WinPAC utility on the desktop and click **"File"** → **"Save and Reboot"**.
- 2.2. Click the **"Yes"** button and wait for the device to reboot.



Step 3: Get the COM port name and use it in your application.

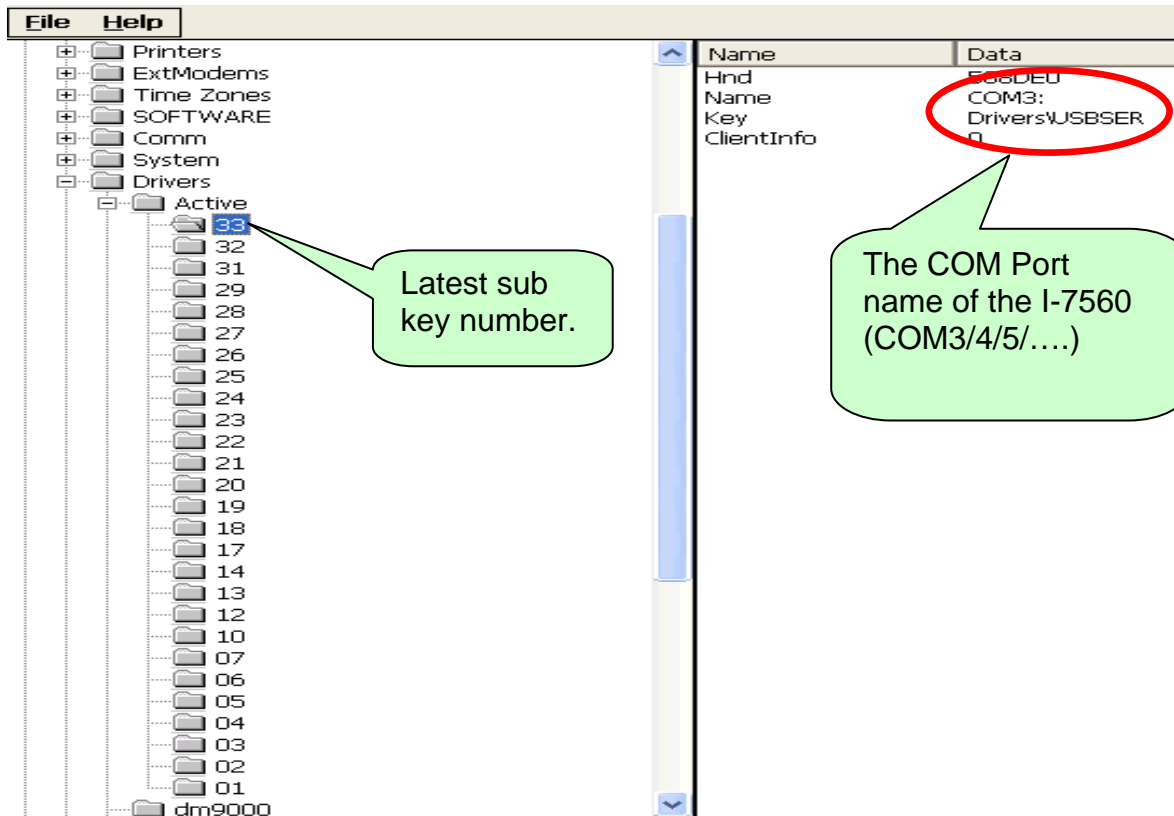
- 3.1. Double click the RegView icon on desktop.



| | | | | | | | |
|----------------|---|---------|-------|------|------------|----------|-----|
| Classification | System and Application FAQ on WinCE PAC | | | | No. | 1-008-00 | |
| Author | Tunglu-Yu | Version | 1.0.1 | Date | 2013/08/06 | Page | 5/9 |

3.2. Go to HKEY_LOCAL_MACHINE → Drivers → Active and click the Max number of sub key(The value of “key” is “Drivers\USBSEr”), the name is displayed in right hand window.

3.3. Fill the name in your program based on serial communication to control the device connected to I-7560.



Example of Connecting with PC

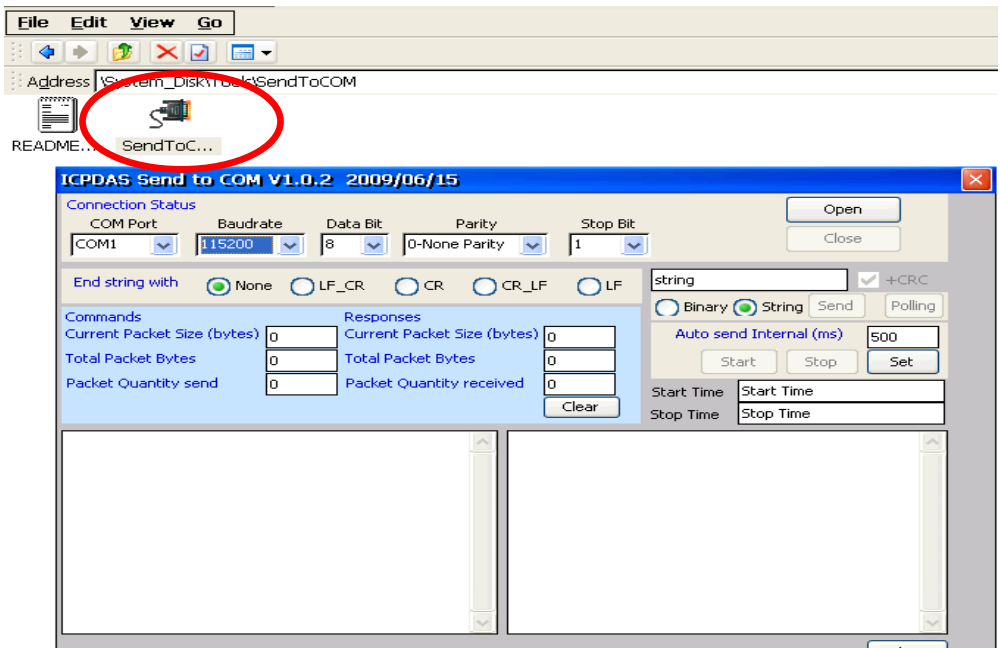
Step 1: Connect the USB port of your WinPAC with I-7560, and connect the RS-232 connector to your PC. The RS-232 connectors on both I-7560 and PC are DTE compatible, a null modem is needed to connect the I-7520 and PC.



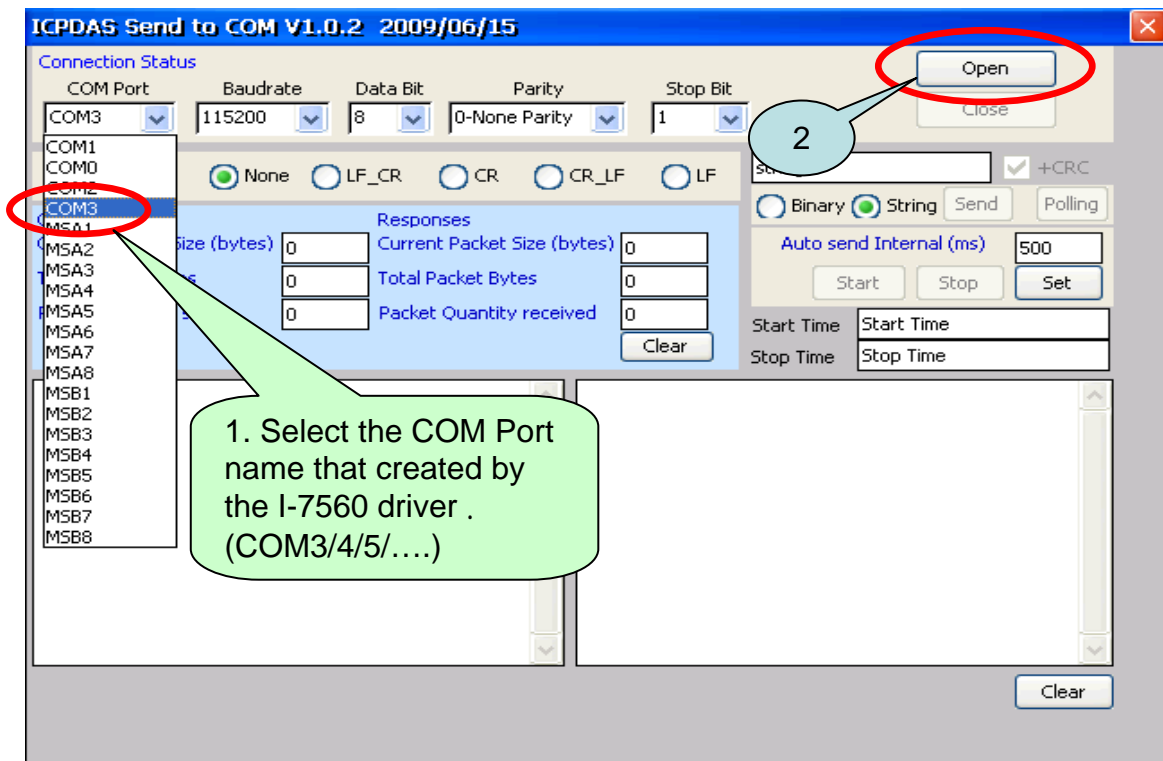
| | | | | | | | |
|----------------|---|---------|-------|------|------------|----------|-----|
| Classification | System and Application FAQ on WinCE PAC | | | | No. | 1-008-00 | |
| Author | Tunglu-Yu | Version | 1.0.1 | Date | 2013/08/06 | Page | 6/9 |

Step 2: Install the driver and get the COM port name.

Step 3: Execute **SendTOCOM.exe** on WinPAC/ViewPAC from the “\System_Disk\Tools\SendToCOM” folder.

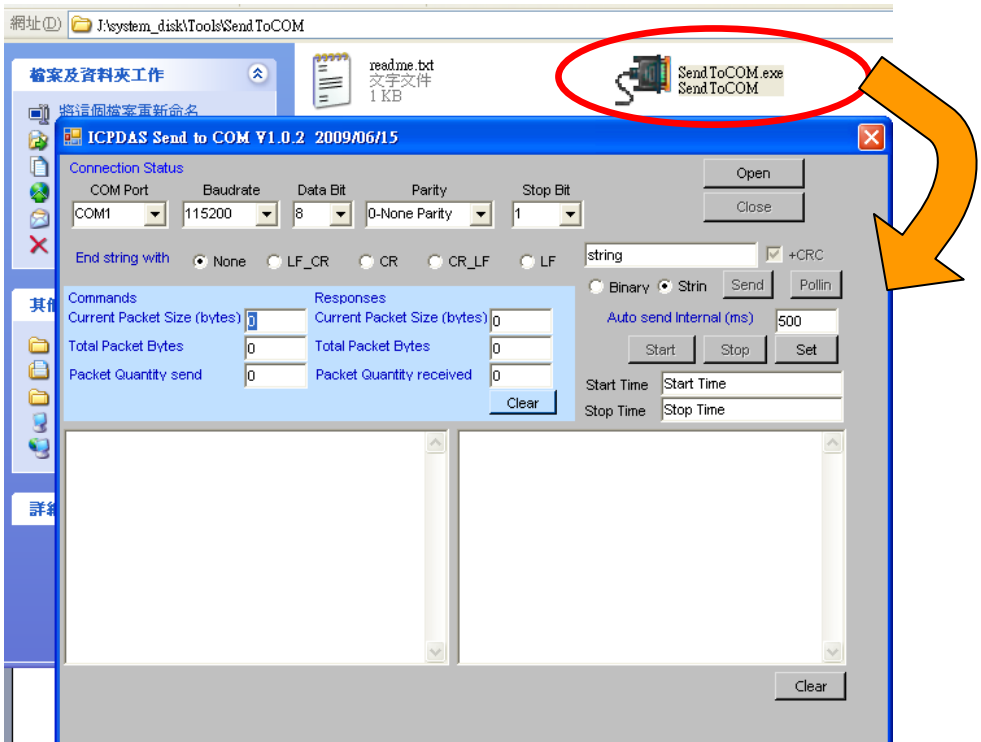


Step 4: Select the COM port number that the I-7560 driver created and press the “Open” button.

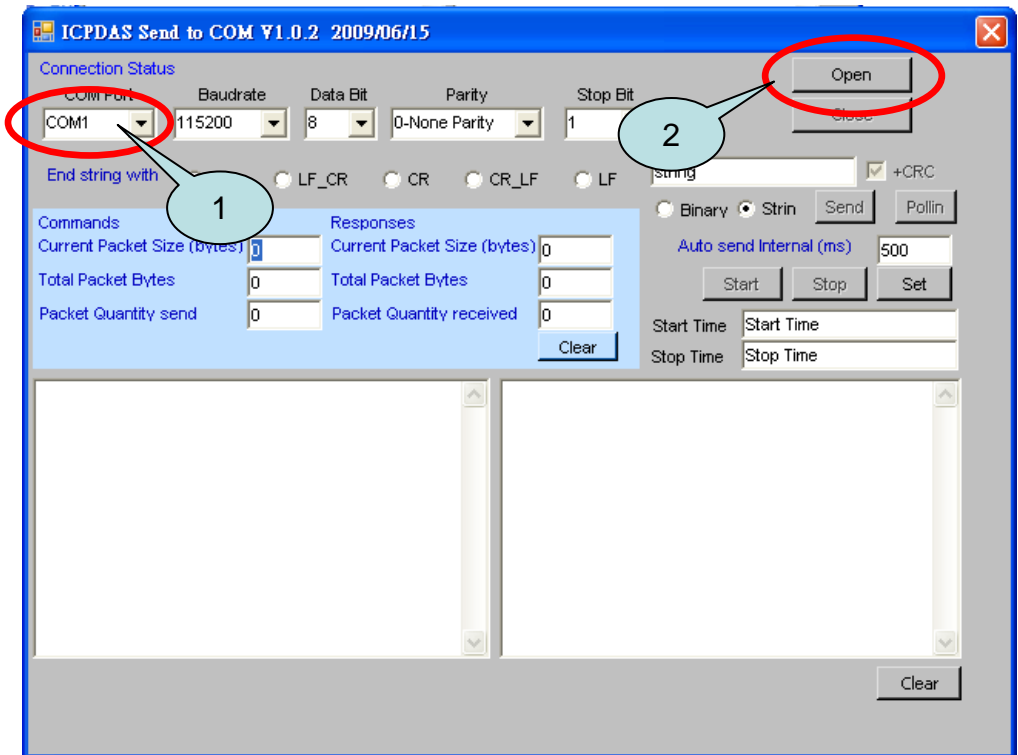


| | | | | | | | |
|----------------|---|---------|-------|------|------------|----------|-----|
| Classification | System and Application FAQ on WinCE PAC | | | | No. | 1-008-00 | |
| Author | Tunglu-Yu | Version | 1.0.1 | Date | 2013/08/06 | Page | 7/9 |

Step 5: Copy “SendToCOM.exe” to PC and run it.

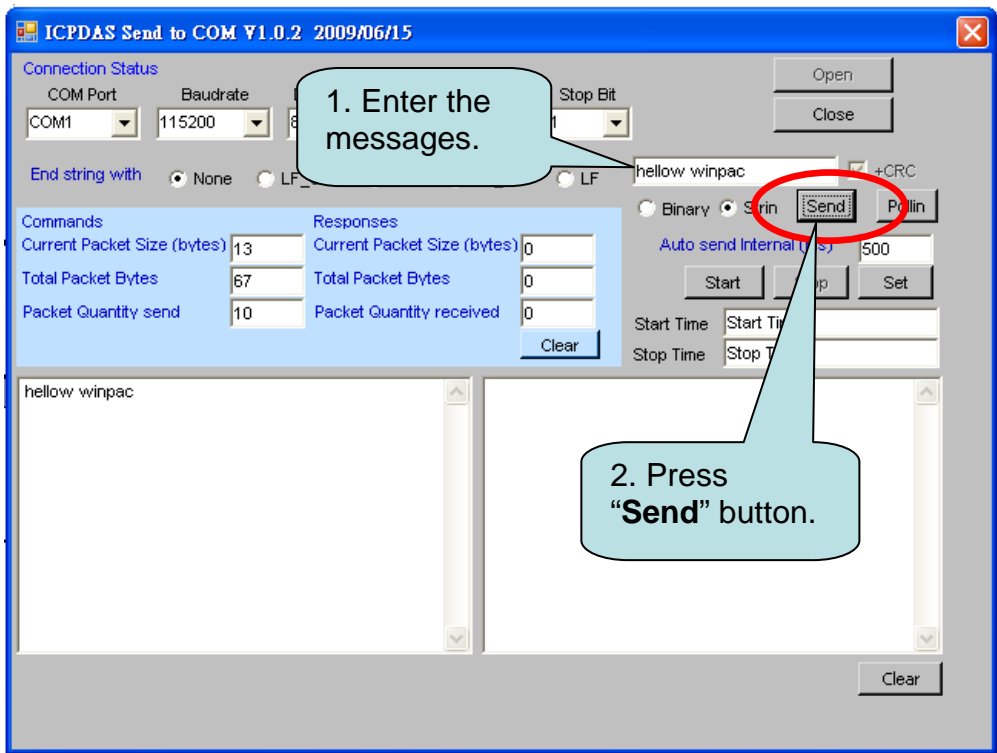


Step 6: Select the COM Port on the PC used to connect to I-7560 and click “Open”.

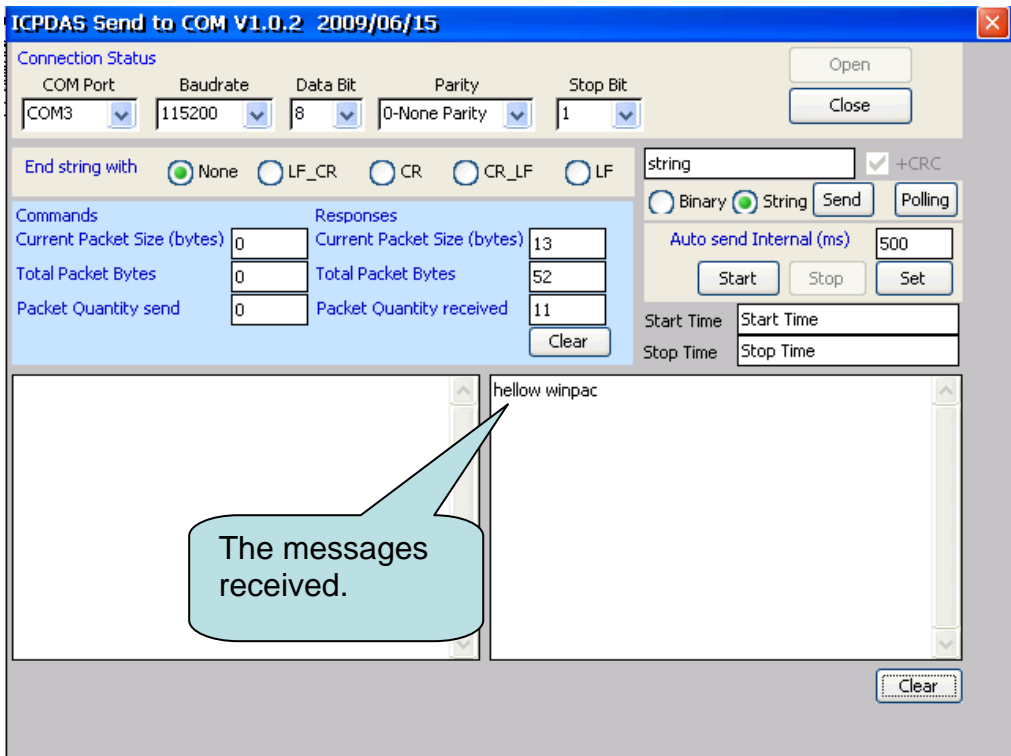


| | | | | | | | |
|----------------|---|---------|-------|------|------------|----------|-----|
| Classification | System and Application FAQ on WinCE PAC | | | | No. | 1-008-00 | |
| Author | Tunglu-Yu | Version | 1.0.1 | Date | 2013/08/06 | Page | 8/9 |

Step 7: Send message from PC to WinPAC.



Step 8: Check the message received on WinPAC.



| | | | | | | | |
|----------------|---|---------|-------|------|------------|----------|-----|
| Classification | System and Application FAQ on WinCE PAC | | | | No. | 1-008-00 | |
| Author | Tunglu-Yu | Version | 1.0.1 | Date | 2013/08/06 | Page | 9/9 |

Revision History

| Revision | Date | Description |
|----------|------------|---|
| 1.0.1 | 2013/08/06 | NEW: Added support information for WP-5000 series and VP-4131 |
| 1.0.0 | 2010/02/12 | Initial release |