

Classification	System and Application FAQ on WinCE PAC				No.	1-005-02	
Author	Tunglu-Yu	Version	1.0.1	Date	2013/08/06	Page	1/4

## How to calibrate an ELO USB touch panel

*Applies to:*

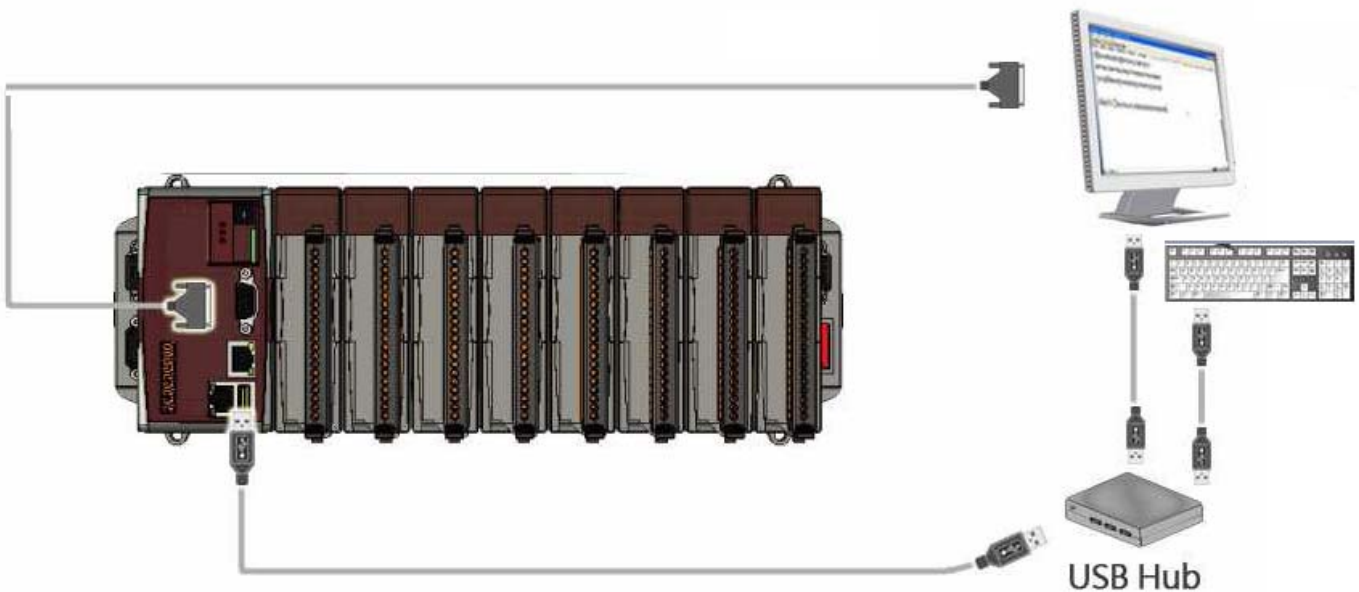
<i>Platform</i>	<i>OS version</i>	<i>WinPAC/ViewPAC utility version</i>
<i>WP-8x3x/ WP-8x4x</i>	<i>All versions</i>	<i>All versions</i>
<i>WP-5000</i>	<i>All versions</i>	<i>All versions</i>
<i>VP-23W1/ VP-25W1</i>	<i>N/A</i>	<i>N/A</i>
<i>VP-4131</i>	<i>N/A</i>	<i>N/A</i>

*N/A: Not applicable to this platform and OS.*

### Tips & Warnings



To use a touch panel and a keyboard at the same time on WP-8x4x, you need a USB hub to expand the single USB port into several.

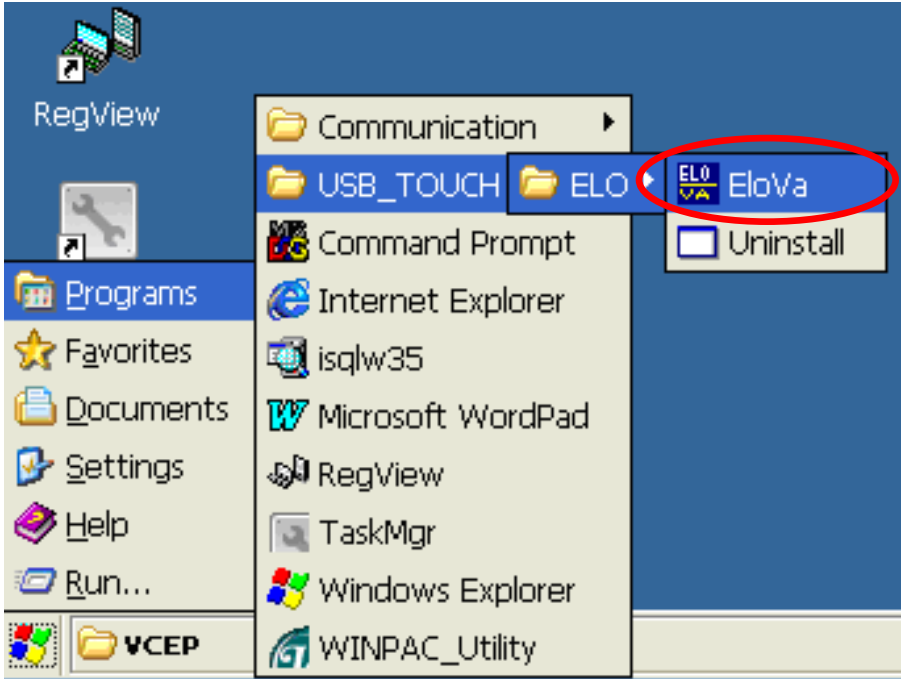


Classification	System and Application FAQ on WinCE PAC				No.	1-005-02	
Author	Tunglu-Yu	Version	1.0.1	Date	2013/08/06	Page	2/4

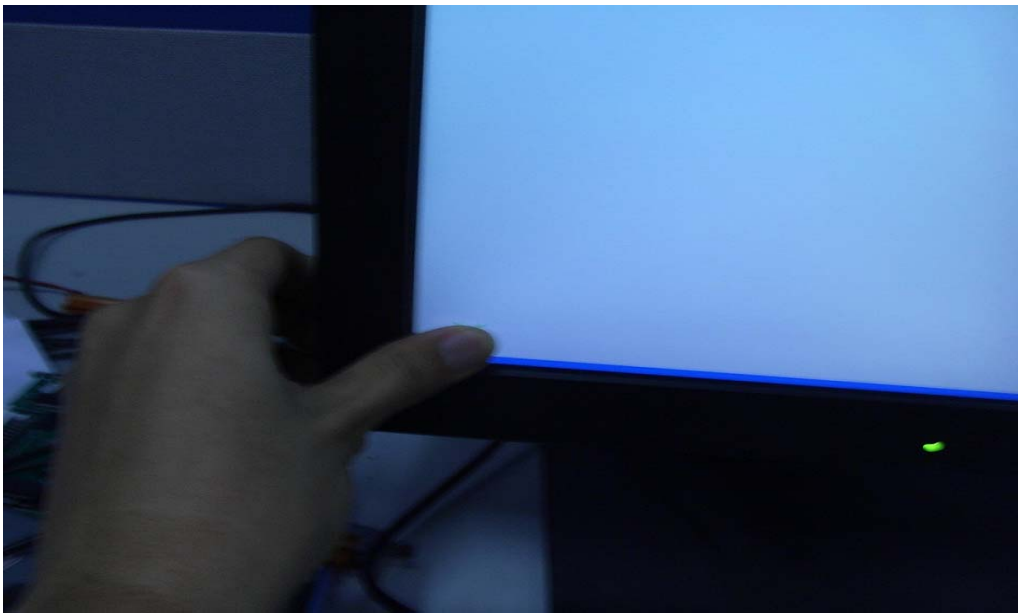
To calibrate an ELO USB touch panel, perform the following steps:

**Step 1:** Execute the calibration program.

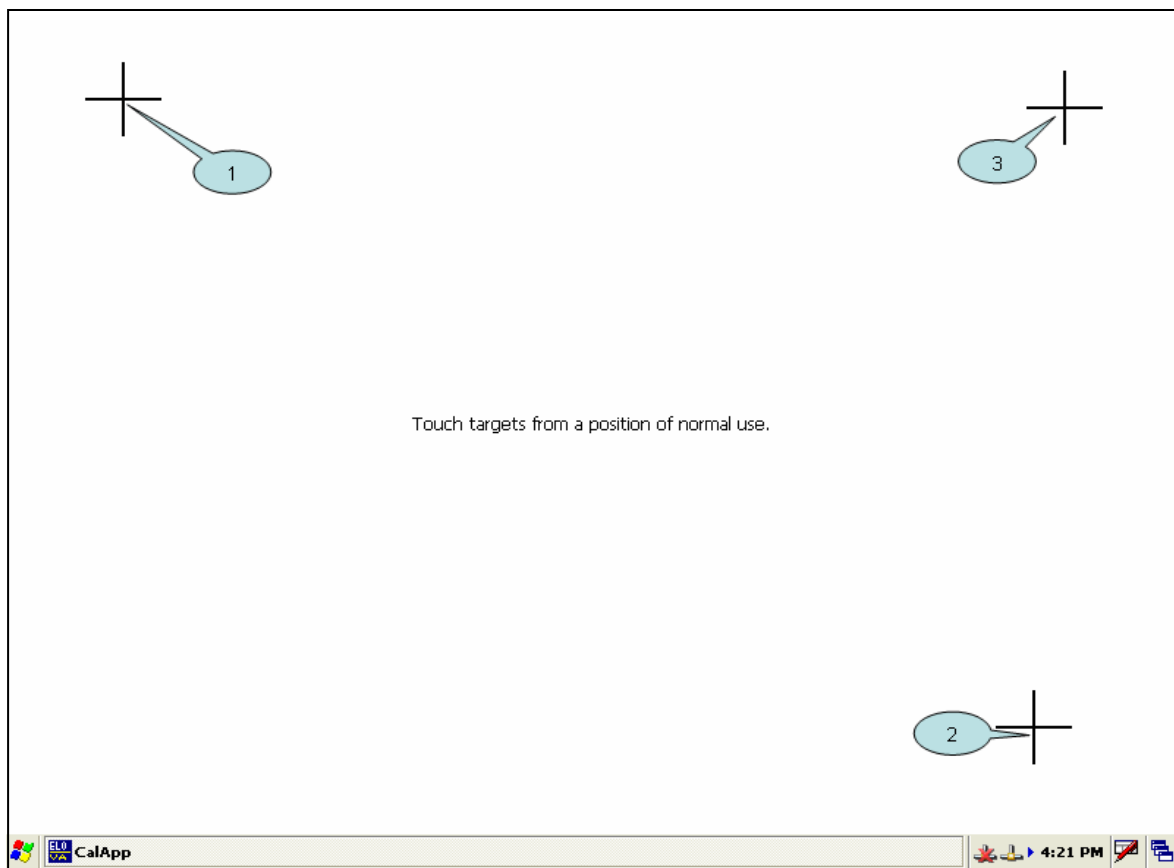
1.1. Click Start → Programs → USB\_TOUCH → ELO → EloVa.



1.2. Touch the “+” icons on the monitor to perform the calibration process.

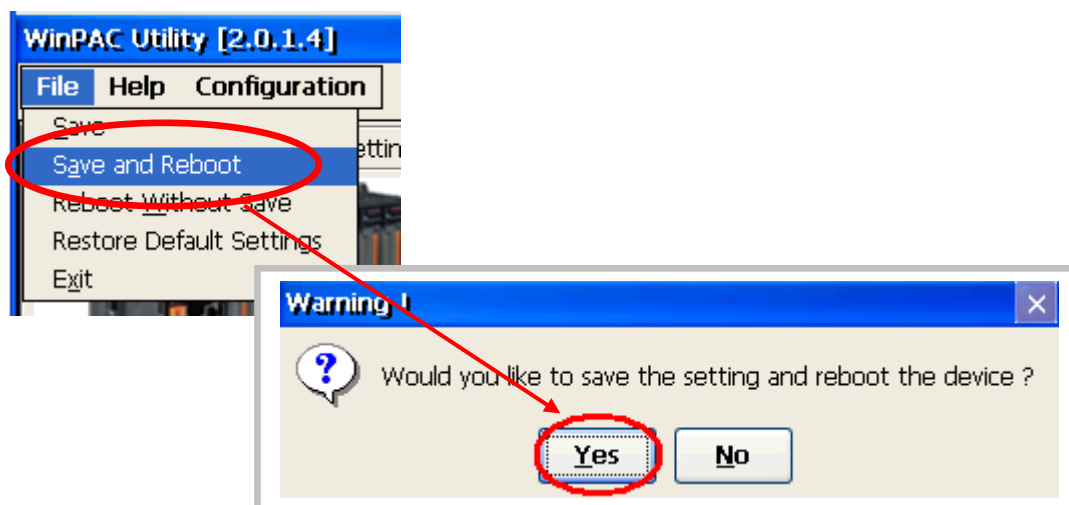


Classification	System and Application FAQ on WinCE PAC				No.	1-005-02	
Author	Tunglu-Yu	Version	1.0.1	Date	2013/08/06	Page	3/4



## Step 2: Save and Reboot your WinPAC.

- 2.1. Start the Win PAC utility on the desktop and click the “**File**” → “**Save and Reboot**”.
- 2.2. Click the “**Yes**” button and wait for the device to reboot.



Classification	System and Application FAQ on WinCE PAC				No.	1-005-02	
Author	Tunglu-Yu	Version	1.0.1	Date	2013/08/06	Page	4/4

## Revision History

Revision	Date	Description
1.0.1	2013/08/06	NEW: Added support information for WP-5000 series
1.0.0	2010/02/12	Initial release