

Classification	System and Application FAQ on WinCE PAC				No.	1-004-06	
Author	Tunglu-Yu	Version	1.0.1	Date	2013/8/06	Page	1/6

# How to set up a PenMount serial touch panel

Applies to:

Platform	OS version	WinPAC/ViewPAC utility version
WP-8x3x/ WP-8x4x	All versions	All versions
WP-5000	All versions	All versions
VP-23W1/ VP-25W1	N/A	N/A
VP-4131	N/A	N/A

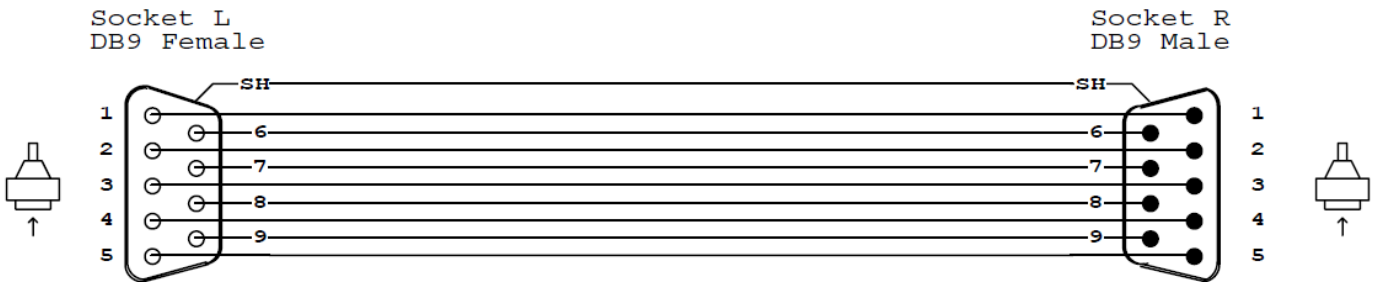
N/A: Not applicable to this platform and OS.

## Tips & Warnings

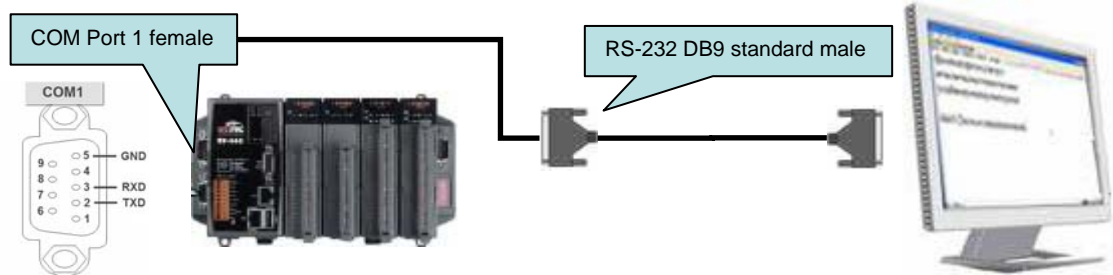


Serial COM Ports 1 and 4 on WP-8000 are standard female/male RS-232 COM Ports. If COM3 is used to connect to the touch panel, you will need a "NULL MODEM".

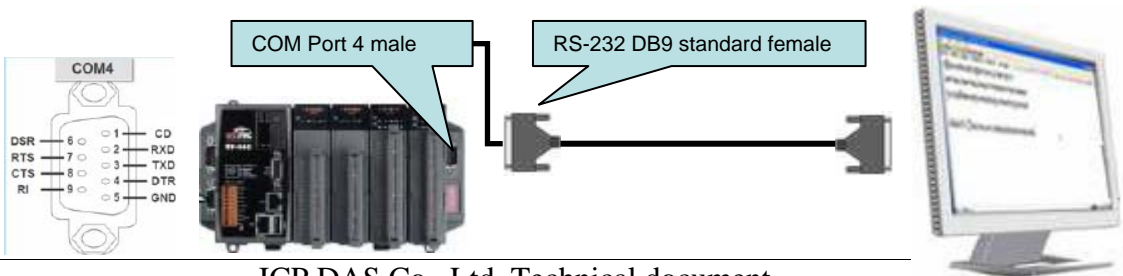
## Standard Wiring



## Connecting to COM1

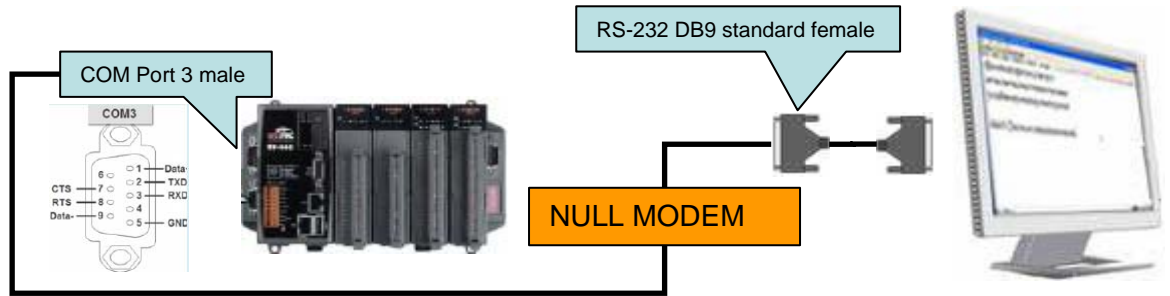


## Connecting to COM4



Classification	System and Application FAQ on WinCE PAC				No.	1-004-06	
Author	Tunglu-Yu	Version	1.0.1	Date	2013/8/06	Page	2/6

### Connecting to COM3



To use a PenMount serial touch panel, perform the following steps:

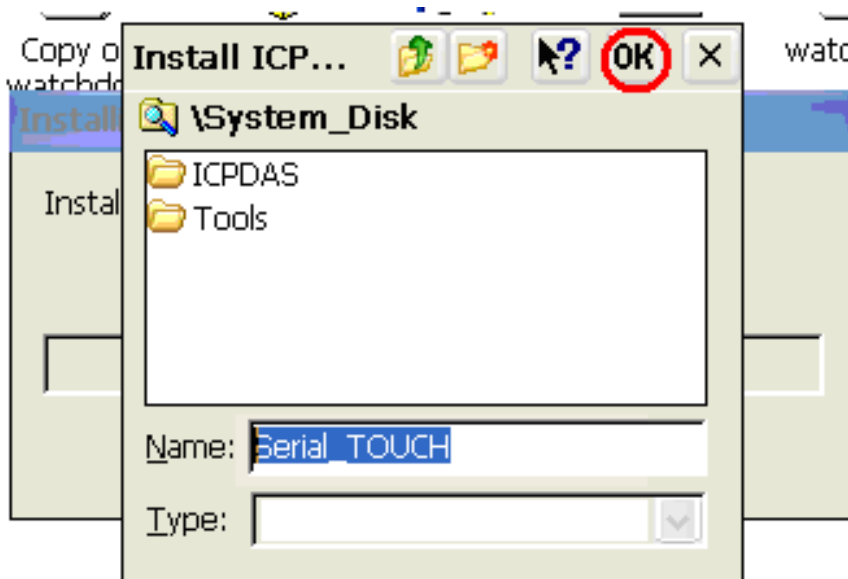
#### Step 1: Locate the driver.

The **PenMount\_Serial\_TOUCH\_V20100824.CAB** is located at

1. WinPAC file path: \Micro\_SD\External\_device\_driver\
2. CD: \napdos\wp-8x4x\_ce50\Micro\_SD\External\_device\_driver\
3. ftp://ftp.icpdas.com/pub/cd/winpac/napdos/wp-8x4x\_ce50/Micro\_SD/external\_device\_driver/

#### Step 2: Install the driver.

- 2.1. Double-click the **PenMount\_Serial\_TOUCH\_V20100824.CAB**, and then click "OK".

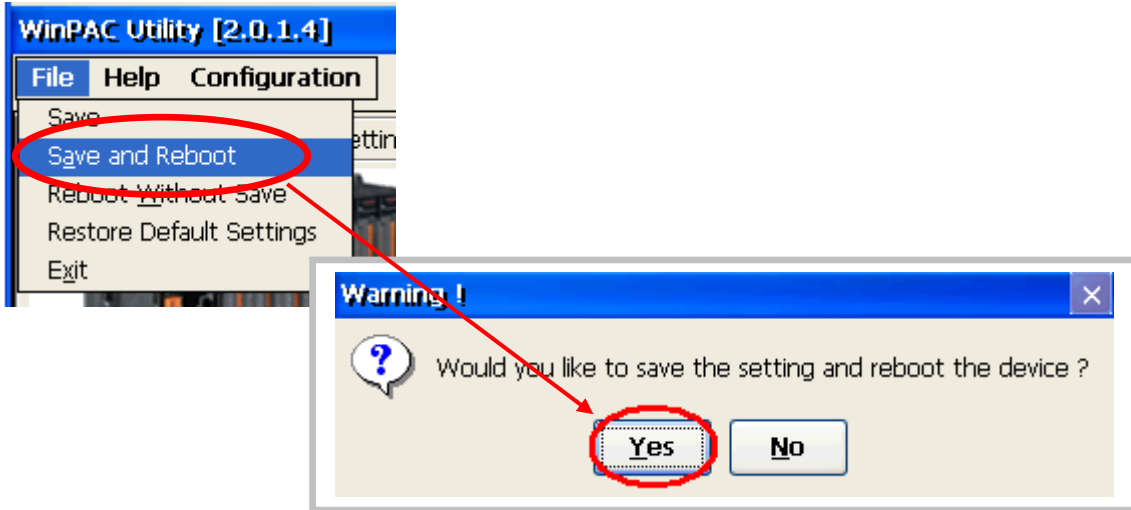


Classification	System and Application FAQ on WinCE PAC				No.	1-004-06	
Author	Tunglu-Yu	Version	1.0.1	Date	2013/8/06	Page	3/6

**Step 3: Save and Reboot your WinPAC.**

3.1. Start the Win PAC utility on the desktop and click the “File” → “Save and Reboot”.

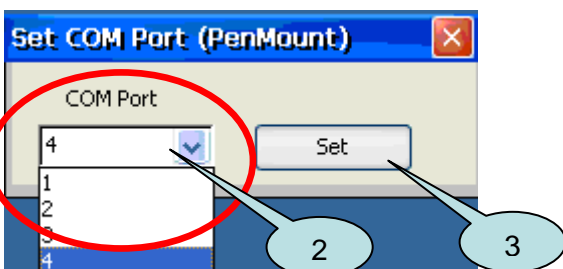
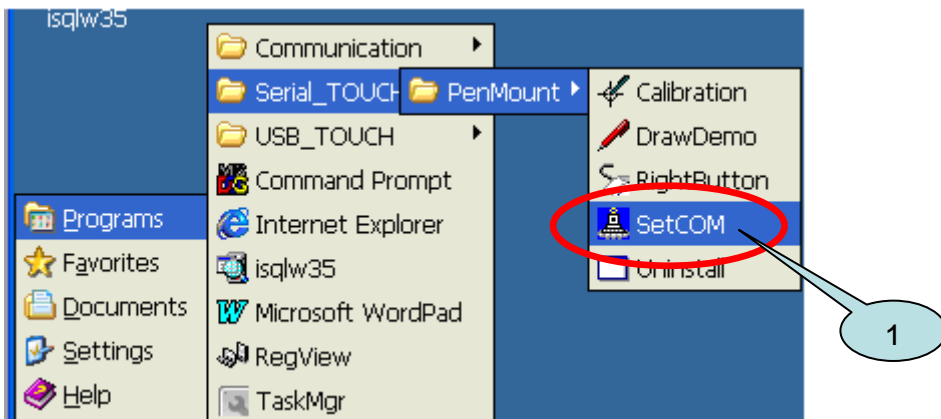
3.2. Click the “Yes” button on the warning box and wait for reboot.



**Step 4: Calibrate the touch panel.**

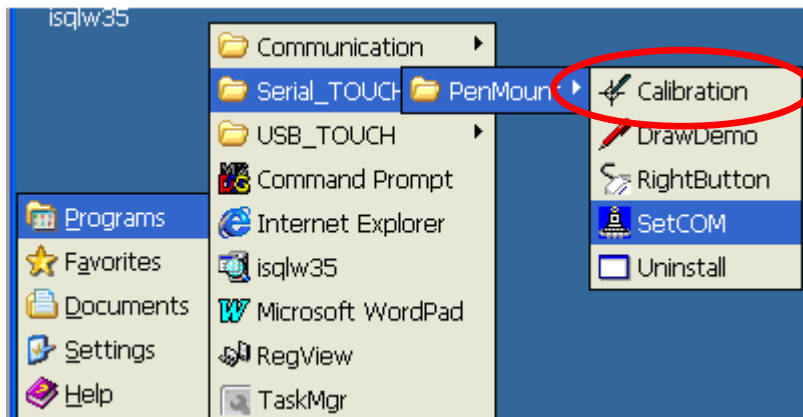
4.1 Select the COM Port connected to the touch panel after rebooting.

1. Click Start → Programs → Serial\_TOUCH → Penmount → SetCOM.
2. Select the COM port used and press “Set” button.

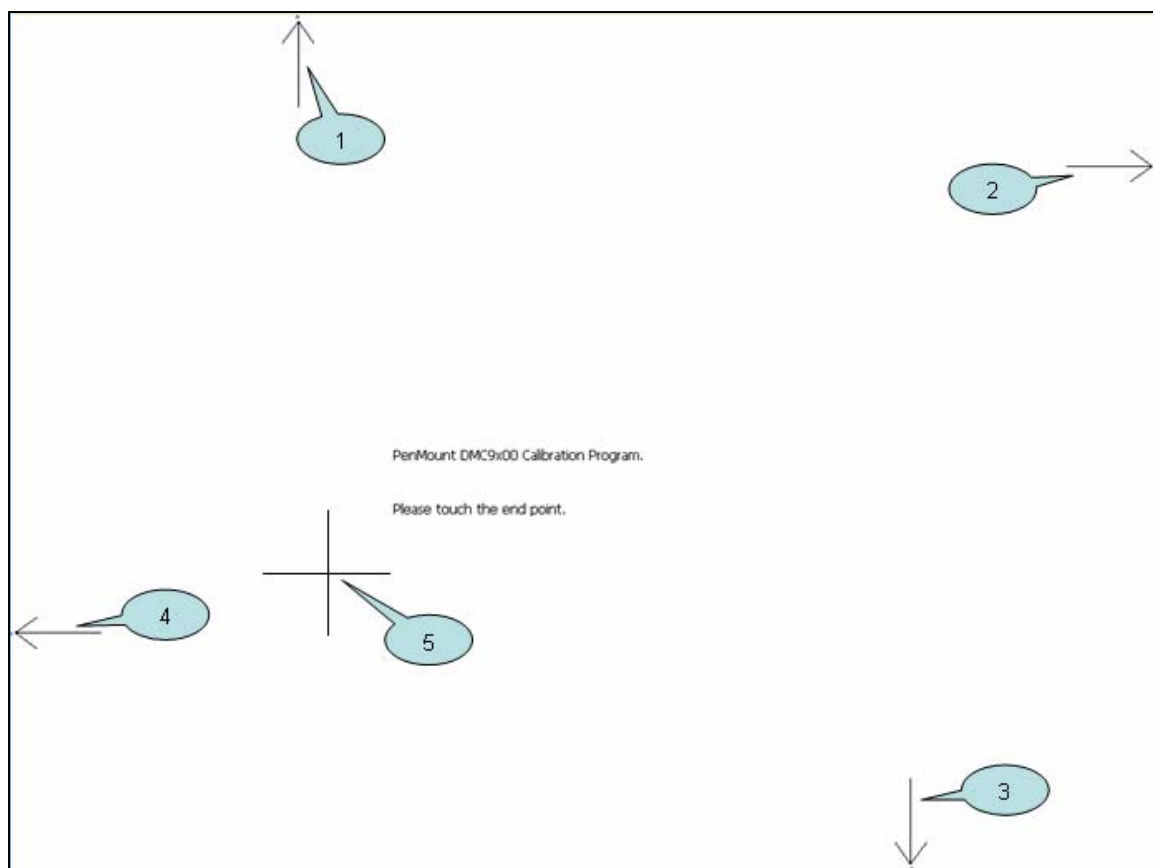


Classification	System and Application FAQ on WinCE PAC				No.	1-004-06	
Author	Tunglu-Yu	Version	1.0.1	Date	2013/8/06	Page	4/6

4.2. Click Start → Programs → Serial\_TOUCH → Penmount → Calibration.



4.3. Touch the arrowhead on the monitor one by one and then the “+” icon till the program finish.

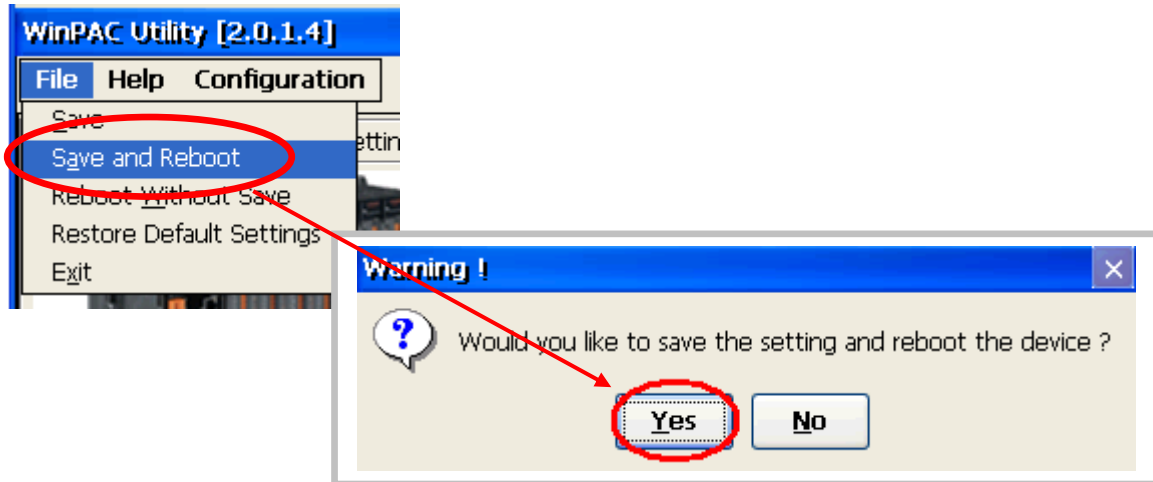


Classification	System and Application FAQ on WinCE PAC				No.	1-004-06	
Author	Tunglu-Yu	Version	1.0.1	Date	2013/8/06	Page	5/6

**Step 5:** Save the settings.

5.1. Start the Win PAC utility and click the “**File**” → “**Save and Reboot**” menu option.

5.2. Click the “**Yes**” button and wait for reboot.



Classification	System and Application FAQ on WinCE PAC				No.	1-004-06	
Author	Tunglu-Yu	Version	1.0.1	Date	2013/8/06	Page	6/6

## Revision History

Revision	Date	Description
1.0.1	2013/08/06	NEW: Added support information for WP-5000 series
1.0.0	2010/02/12	Initial release