

Classification	System and Application FAQ on WinCE PAC				No.	1-004-03	
Author	Tunglu-Yu	Version	1.0.1	Date	2013/8/06	Page	1/5

## How to set up a PenMount USB touch panel

Applies to:

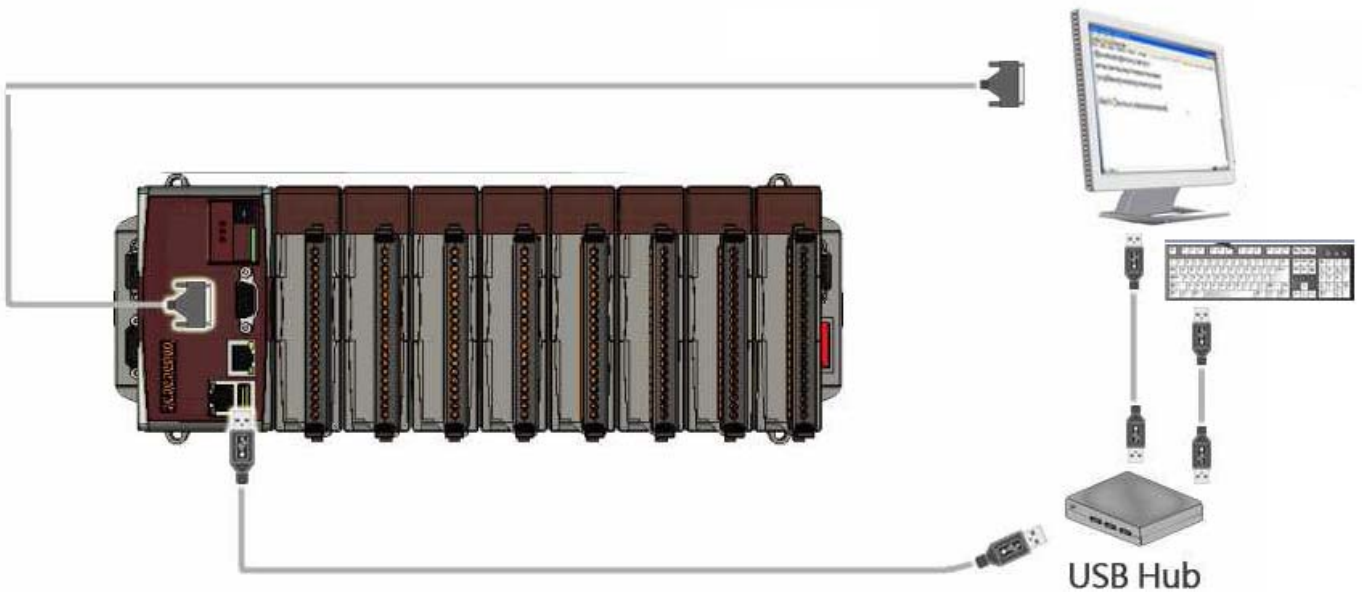
Platform	OS version	WinPAC/ViewPAC utility version
WP-8x3x/ WP-8x4x	All versions	All versions
WP-5000	All versions	All versions
VP-23W1/ VP-25W1	N/A	N/A
VP-4131	N/A	N/A

*N/A: Not applicable to this platform and OS.*

### Tips & Warnings



To use a touch panel and a keyboard at the same time on WP-8x4x, you need a USB hub to expand the single USB port of WP-8x4x into several.



Classification	System and Application FAQ on WinCE PAC				No.	1-004-03	
Author	Tunglu-Yu	Version	1.0.1	Date	2013/8/06	Page	2/5

To use a PenMount USB touch panel, perform the following steps:

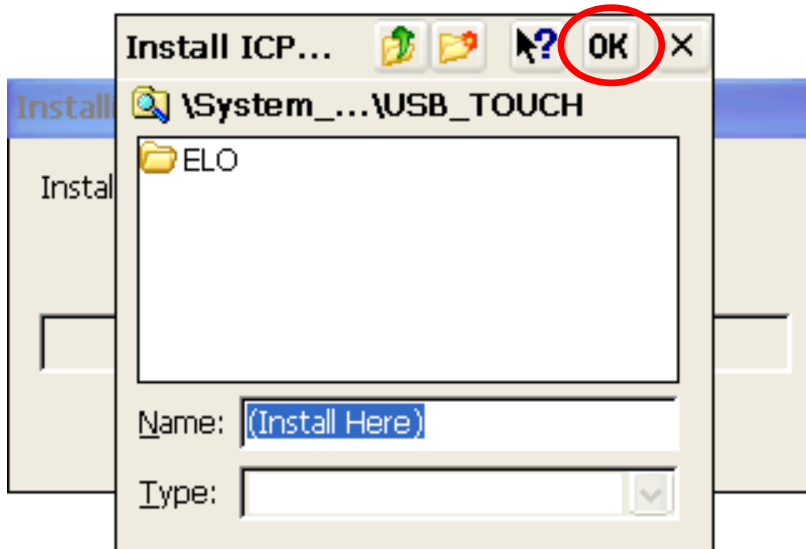
**Step 1:** Locate the driver.

The **PenMount\_USB\_TOUCH\_V20100526.CAB** is located at

1. **WinPAC file path:** \Micro\_SD\External\_device\_driver\
2. CD: \napdos\wp-8x4x\_ce50\Micro\_SD\External\_device\_driver\
3. ftp://ftp.icpdas.com/pub/cd/winpac/napdos/wp-8x4x\_ce50/Micro\_SD/external\_device\_driver/

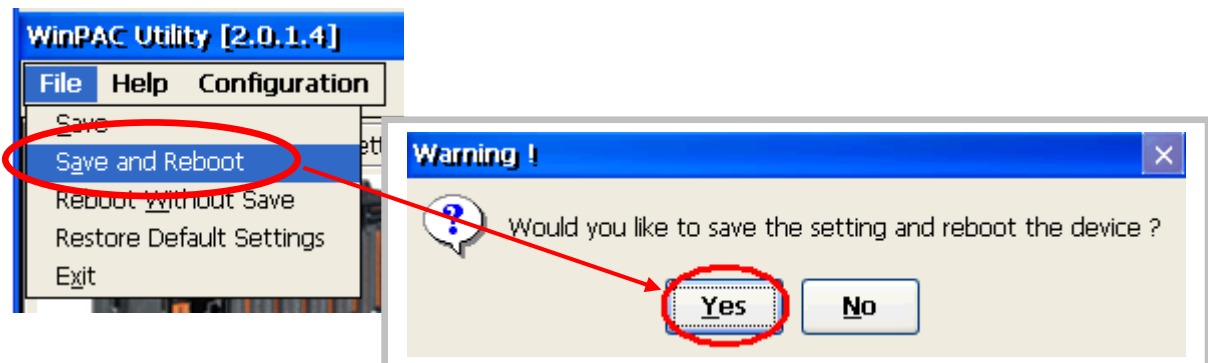
**Step 2:** Install the driver.

- 2.1. Double click the **PenMount\_USB\_TOUCH\_V20100526.CAB** file, and then click "OK".



**Step 3:** Save and Reboot your WinPAC.

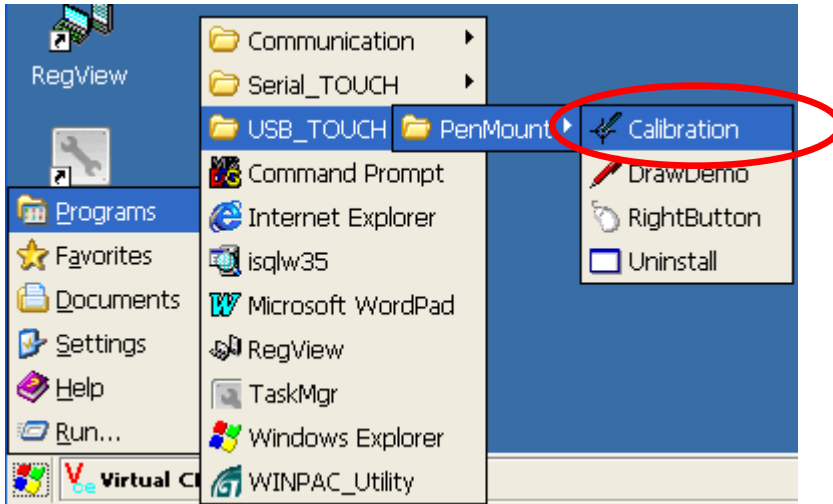
- 3.1. Start the Win PAC utility on the desktop and click the "File" → "Save and Reboot".
- 3.2. Click the "Yes" button and wait for reboot.



Classification	System and Application FAQ on WinCE PAC				No.	1-004-03	
Author	Tunglu-Yu	Version	1.0.1	Date	2013/8/06	Page	3/5

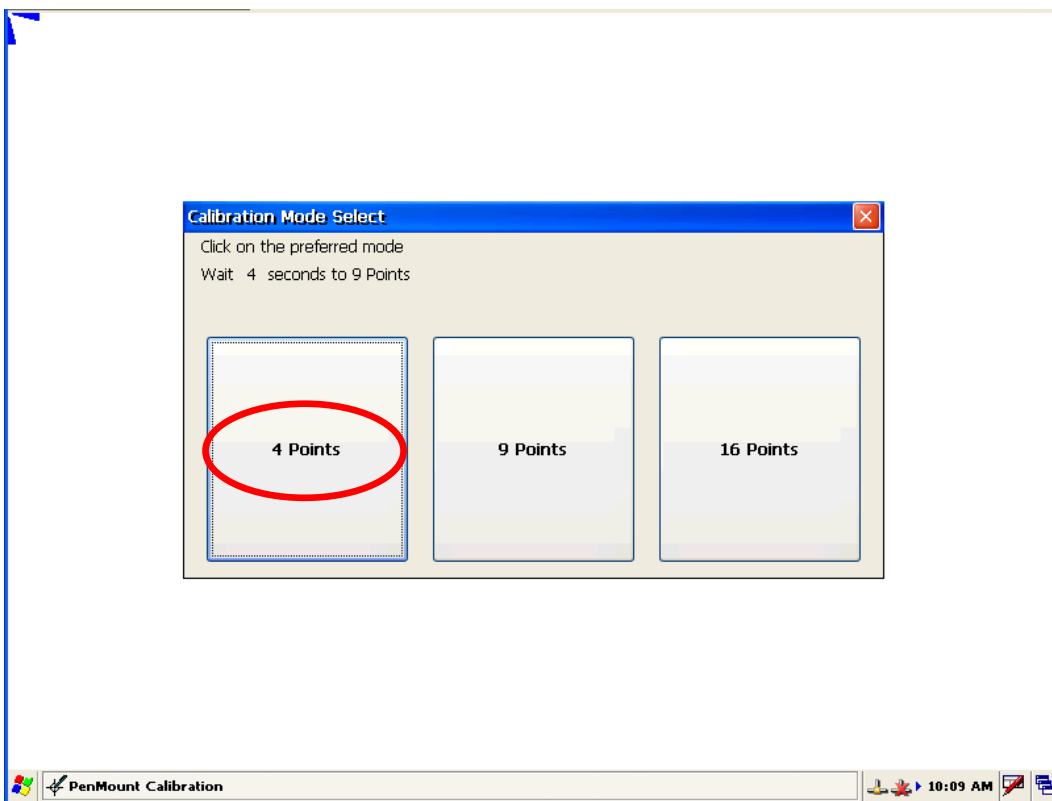
**Step 4:** Calibrate the touch panel.

4.1. After rebooting, click the Start → USB\_TOUCH → PenMount → Calibration.




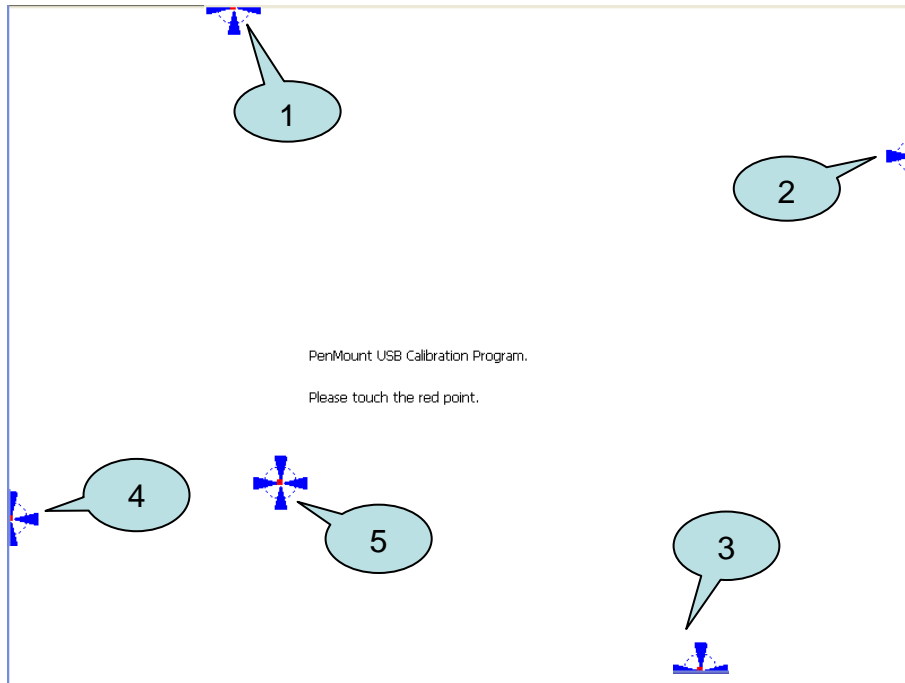
4.2. Click the “4 Points” button.

(Pressing “9 Points” or “16 Points” button could process a more accurate calibration)



Classification	System and Application FAQ on WinCE PAC				No.	1-004-03	
Author	Tunglu-Yu	Version	1.0.1	Date	2013/8/06	Page	4/5

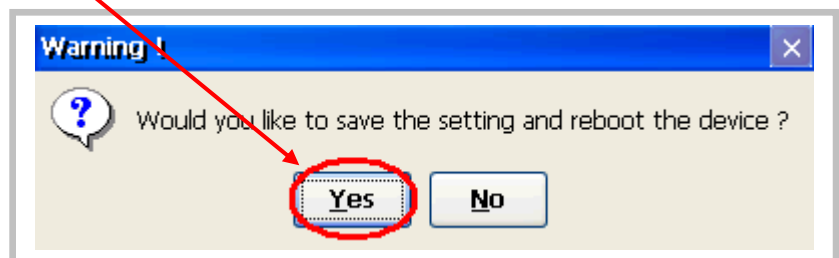
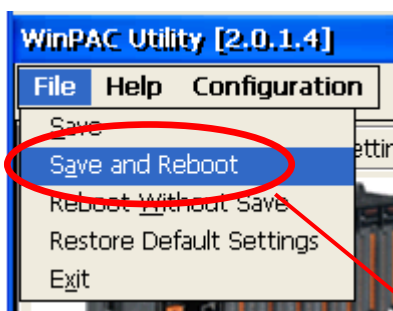
4.3. Touch the “” icons on the monitor one by one to perform the calibration process.



**Step 5:** Save the settings.

5.1. Start the Win PAC utility and lick the “**File**”→”**Save and Reboot**” menu option.

5.2. Click the “**Yes**” button and wait for the device to reboot.



Classification	System and Application FAQ on WinCE PAC				No.	1-004-03	
Author	Tunglu-Yu	Version	1.0.1	Date	2013/8/06	Page	5/5

## Revision History

Revision	Date	Description
1.0.1	2013/08/06	NEW: Added support information for WP-5000 series
1.0.0	2010/02/12	Initial release