

Classification	System and Application FAQ on WinCE PAC				No.	1-003-01	
Author	Tunglu-Yu	Version	1.0.1	Date	2013/10/12	Page	1/4

How to set up a printer on LAN

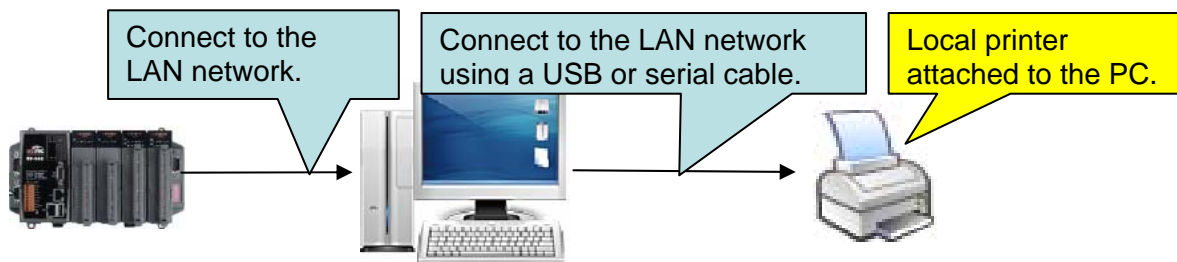
Applies to:

Platform	OS version	WinPAC/ViewPAC utility version
WP-8x3x/ WP-8x4x	All versions	All versions
WP-5000	All versions	All versions
VP-23W1/ VP-25W1	All versions	All versions
VP-4131	All versions	All versions

Tips & Warnings

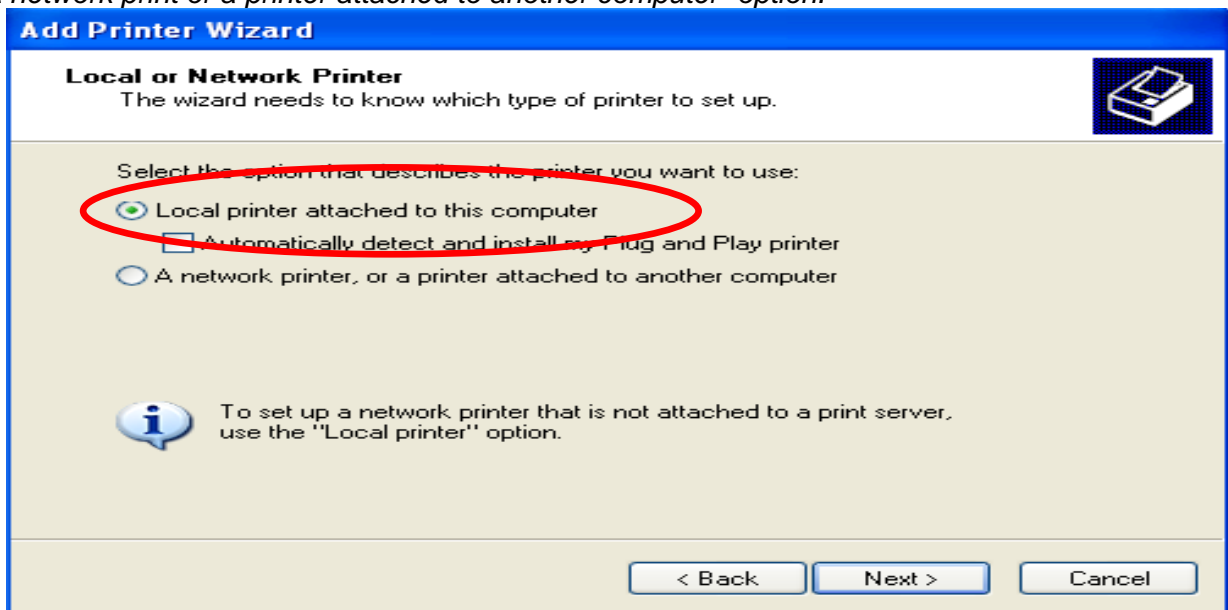


A shared printer added using the "local printer attached to this computer" option is only used for WinPAC/ViewPAC via the network.



Selecting "Local printer attached to the PC" in this diagram means a printer (local printer or network printer) that is setting "Local printer attached to this computer" on PC, as show below.

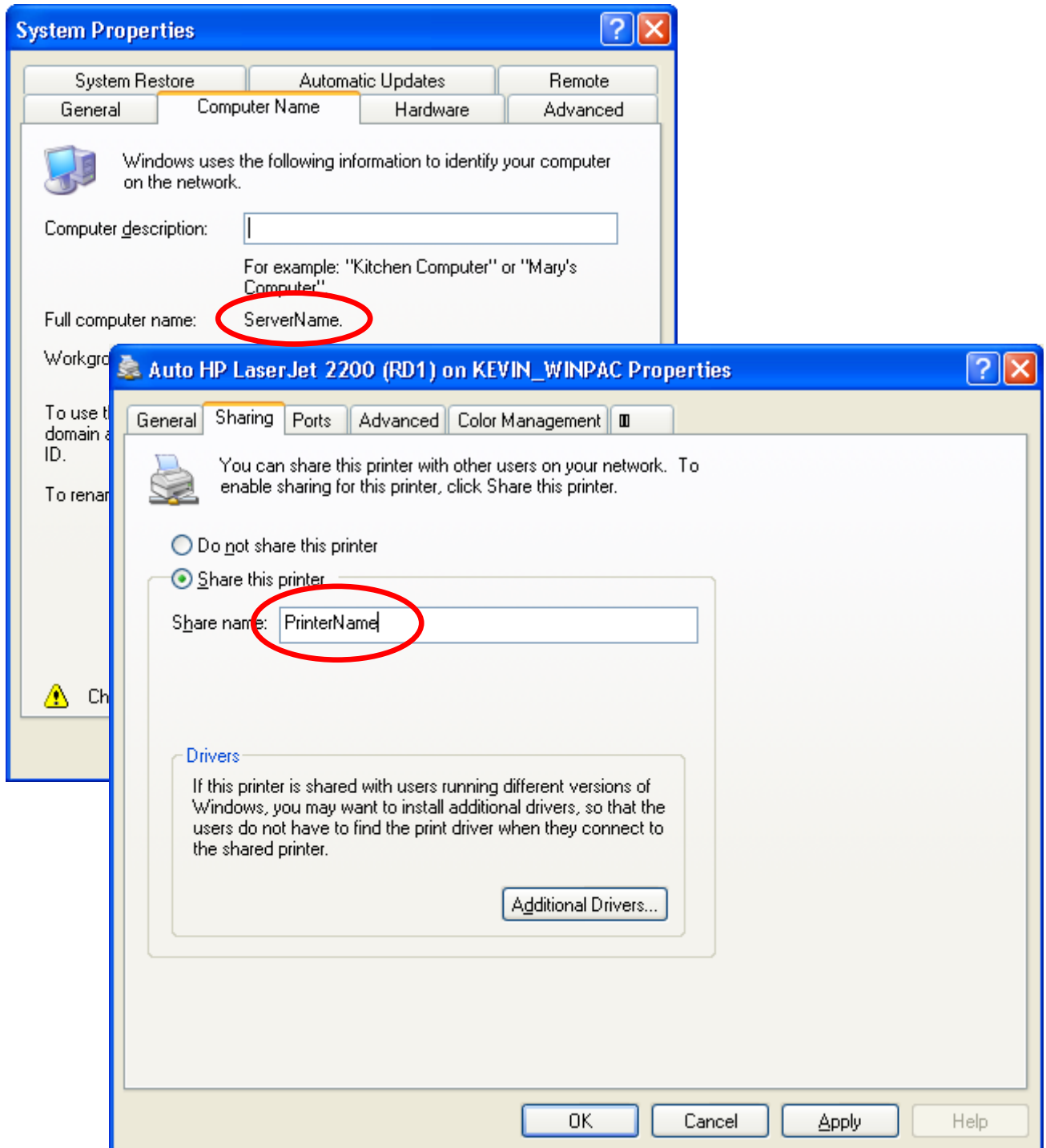
The WinPAC/ViewPAC series **doesn't support** a printer which is set up with the second option: "A network print or a printer attached to another computer" option.



Classification	System and Application FAQ on WinCE PAC				No.	1-003-01	
Author	Tunglu-Yu	Version	1.0.1	Date	2013/10/12	Page	2/4

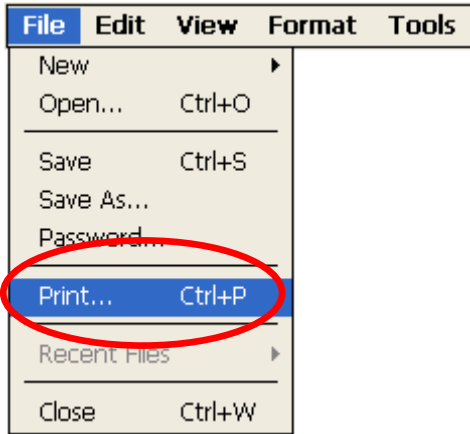
To use a shared printer, perform the following steps:

Step 1: On the Host PC, check the names of the Host PC and the shared printer.



Classification	System and Application FAQ on WinCE PAC				No.	1-003-01	
Author	Tunglu-Yu	Version	1.0.1	Date	2013/10/12	Page	3/4

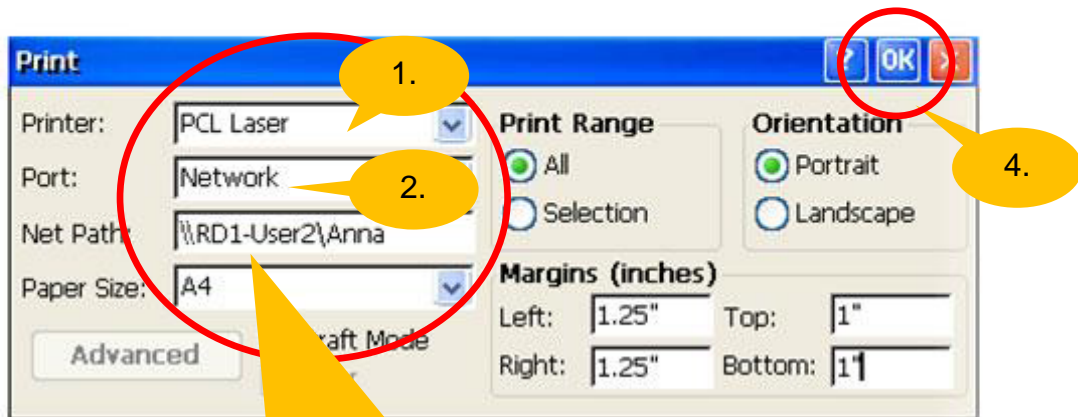
Step 2: On the WinPAC/ViewPAC, open a WordPad format file (*.txt,*.ini...) and click the “File” → “Print”.



Step 3: Set up the printer as following.



Test !!!



3. Enter \\ServerName\PrinterName

Classification	System and Application FAQ on WinCE PAC				No.	1-003-01	
Author	Tunglu-Yu	Version	1.0.1	Date	2013/10/12	Page	4/4

Revision History

Revision	Date	Description
1.0.1	2013/10/12	NEW: Added support for WP-5000 series and VP-4131
1.0.0	2010/02/12	Initial release