

Classification	System and Application FAQ on WinCE PAC				No.	5-001-00	
Author	Tunglu-Yu	Version	1.0.1	Date	2013/05/16	Page	1/9

## How to debug EVC programs online through TCP/IP

*Applies to:*

<i>Platform</i>	<i>OS version</i>	<i>WinPAC/ViewPAC utility version</i>
<i>WP-8x3x/ XP-8x4x</i>	<i>All versions</i>	<i>All versions</i>
<i>WP-5000</i>	<i>All versions</i>	<i>All versions</i>
<i>VP-23W1/ VP-25W1</i>	<i>All versions</i>	<i>All versions</i>
<i>VP-4131</i>	<i>All versions</i>	<i>All versions</i>

To online debug the EVC programs, perform the following steps:

### Tips & Warnings



You must install the WinPAC SDK before you can develop any EVC programs. The WinPAC SDK is a Software Development Kit (SDK) that contains C header files, C libraries and documents.

Below is the step-by-step procedure for installing the WinPAC SDK.

Step 1: Insert the CD into your CD-ROM drive

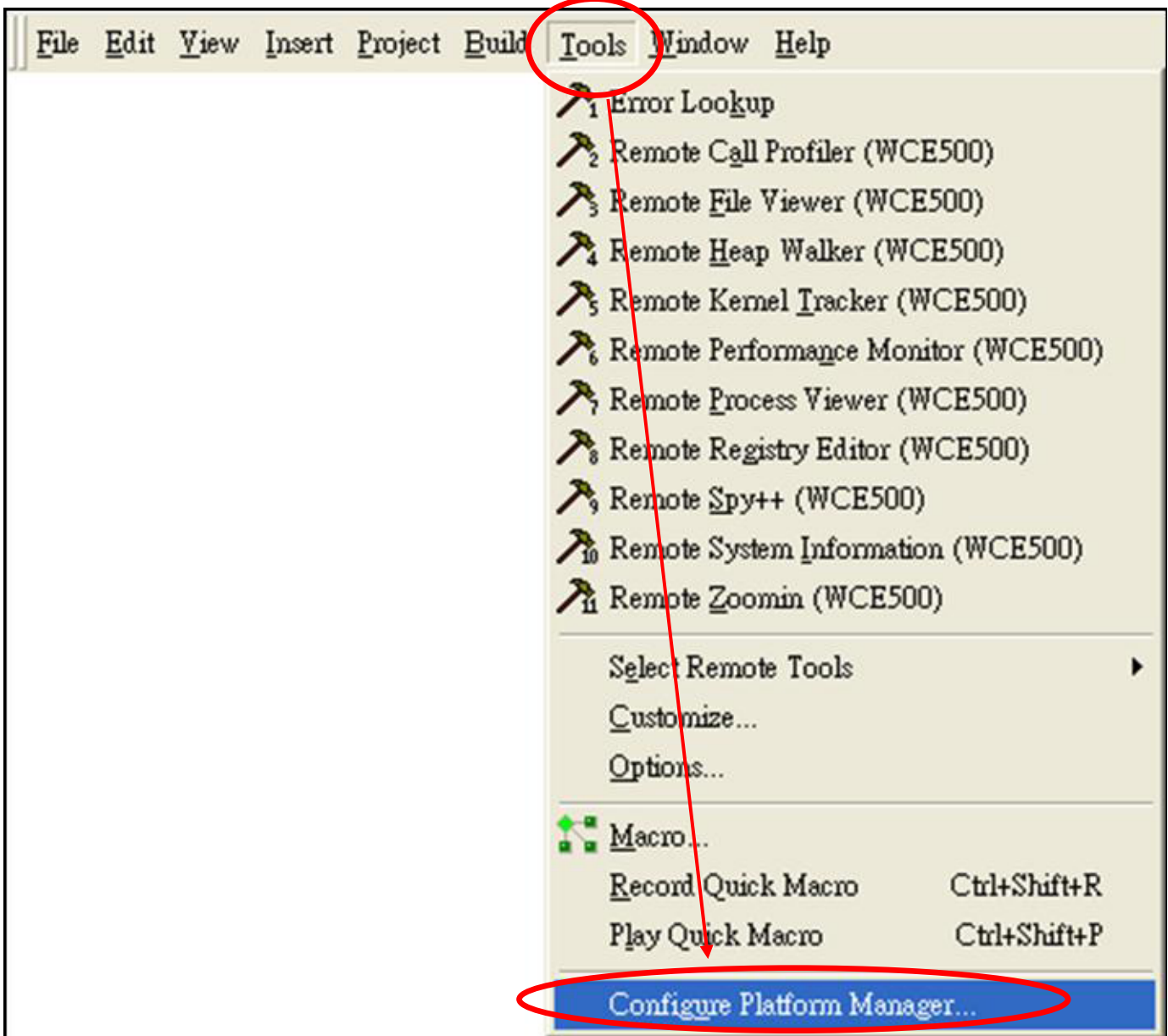
Step 2: Execute the "PAC270\_SDK\_YYYYMMDD.msi" file which is located in:

CD:\Napdos\wp-8x4x\_ce50\SDK\

Step 3: Follow the prompts until the installation is complete

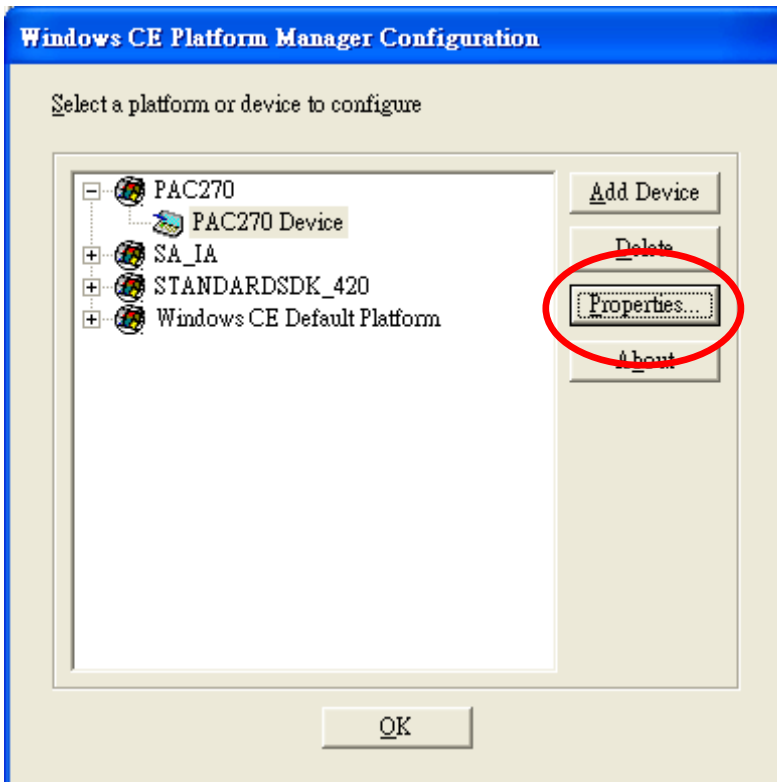
Classification	System and Application FAQ on WinCE PAC				No.	5-001-00	
Author	Tunglu-Yu	Version	1.0.1	Date	2013/05/16	Page	2/9

**Step 1:** Click the “Tools->Configure Platform Manager...” menu option.

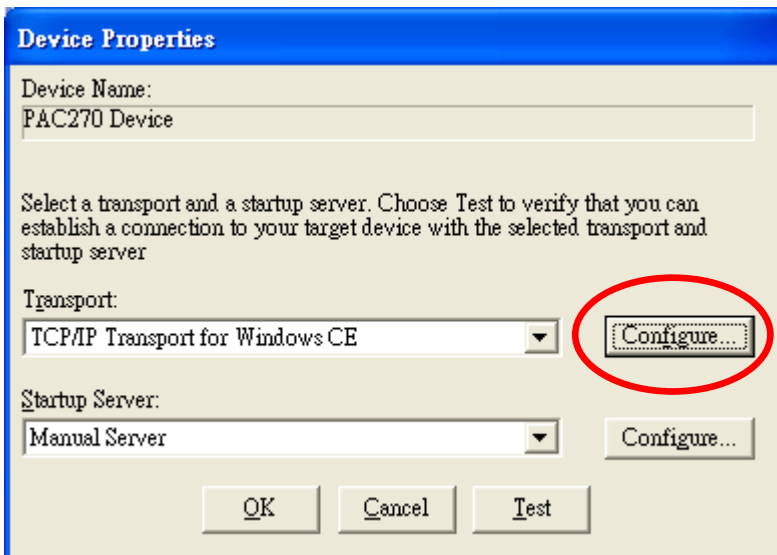


Classification	System and Application FAQ on WinCE PAC				No.	5-001-00	
Author	Tunglu-Yu	Version	1.0.1	Date	2013/05/16	Page	3/9

**Step 2:** Click the “Properties...” button.

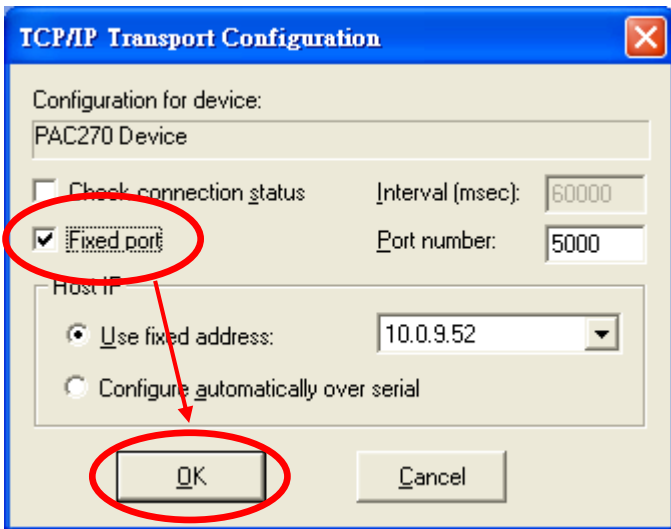


**Step 3:** Click the “Configure...” button.

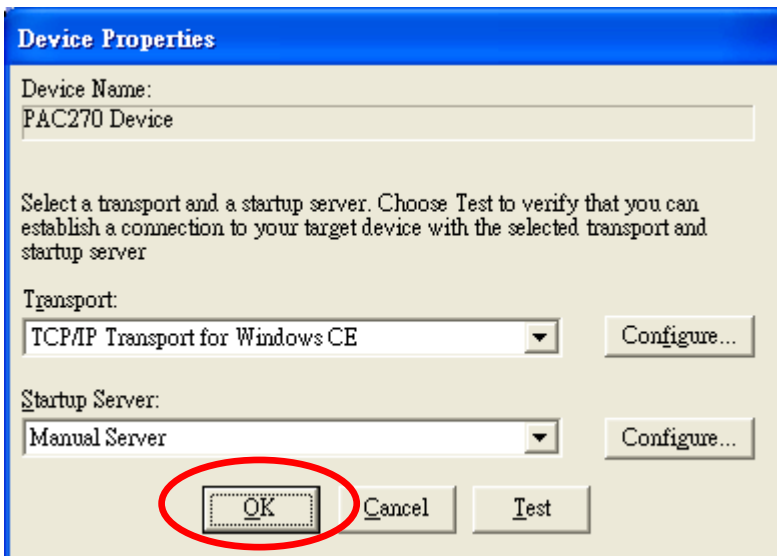


Classification	System and Application FAQ on WinCE PAC				No.	5-001-00	
Author	Tunglu-Yu	Version	1.0.1	Date	2013/05/16	Page	4/9

**Step 4:** Check the “Fixed port” check box and click the “OK” button.

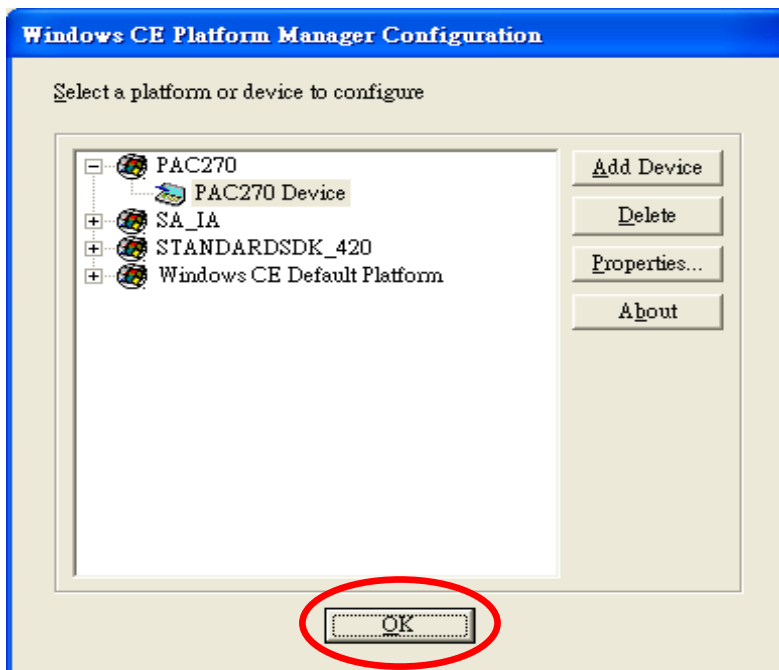


**Step 5:** Click the “OK” button.

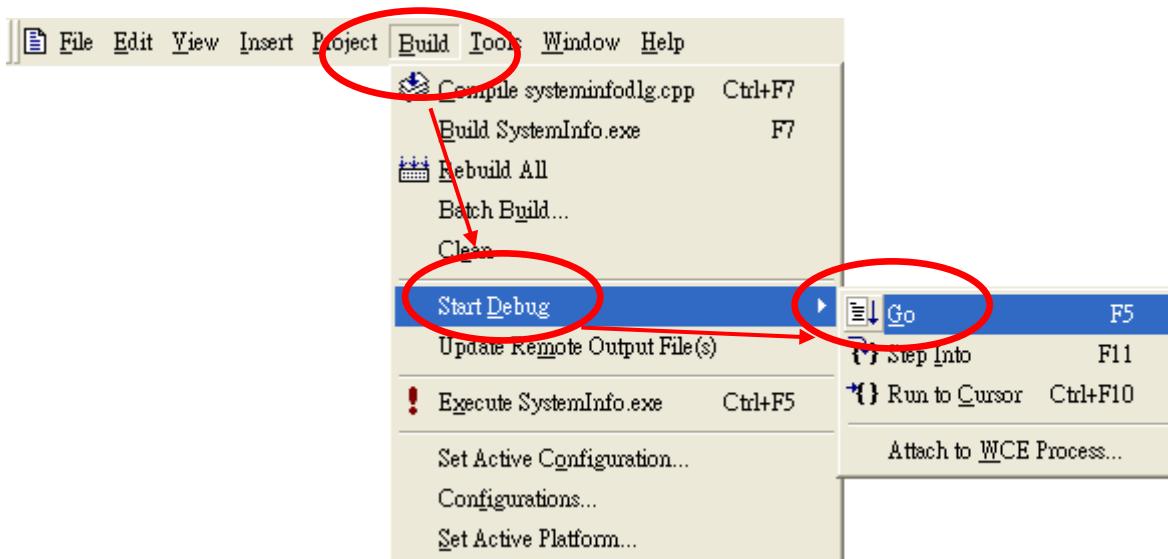


Classification	System and Application FAQ on WinCE PAC				No.	5-001-00	
Author	Tunglu-Yu	Version	1.0.1	Date	2013/05/16	Page	5/9

**Step 6:** Click the “OK” button.

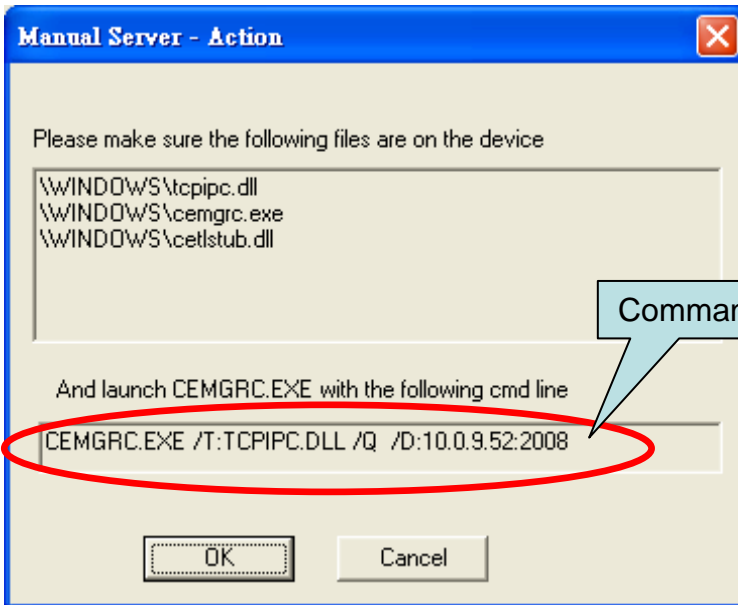


**Step 7:** Click the “Build” menu and select the “Start Debug” command, then click the “Go” command.

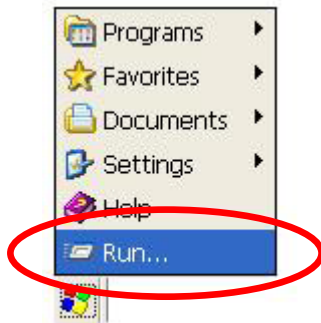


Classification	System and Application FAQ on WinCE PAC				No.	5-001-00	
Author	Tunglu-Yu	Version	1.0.1	Date	2013/05/16	Page	6/9

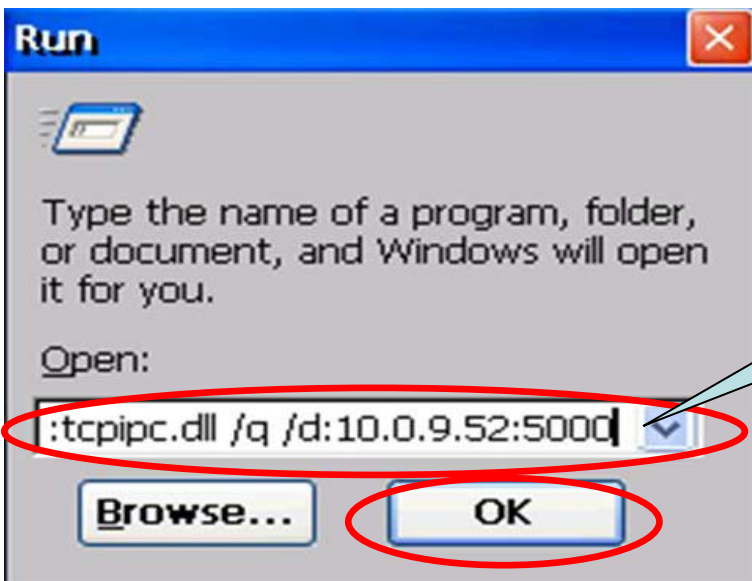
**Step 8:** The “Manual Server - Action” dialog will appear displaying a **command** line. Change to the WinPAC controller side to perform the next two-steps before clicking the “OK” button.



**Step 9:** On the WinPAC side, **click** the “Start->Run...” menu option.

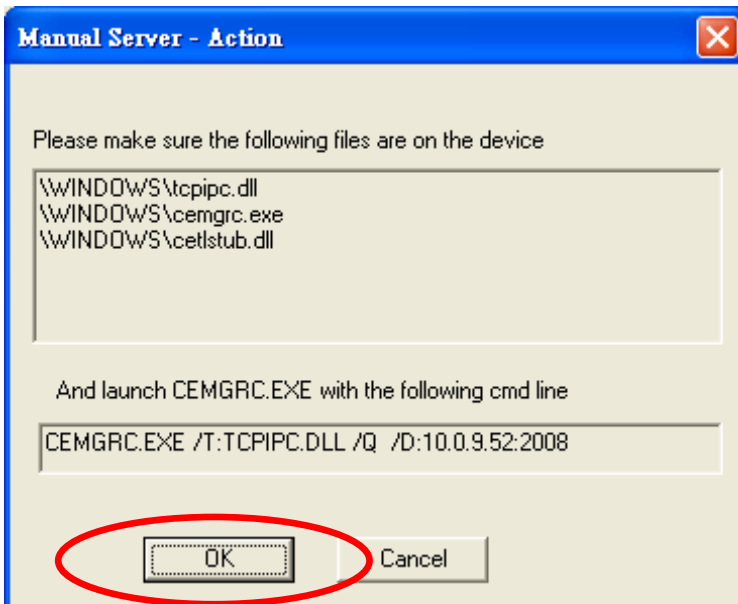


**Step 10:** Enter the **command** that was displayed in step 8 and then click the “OK” button

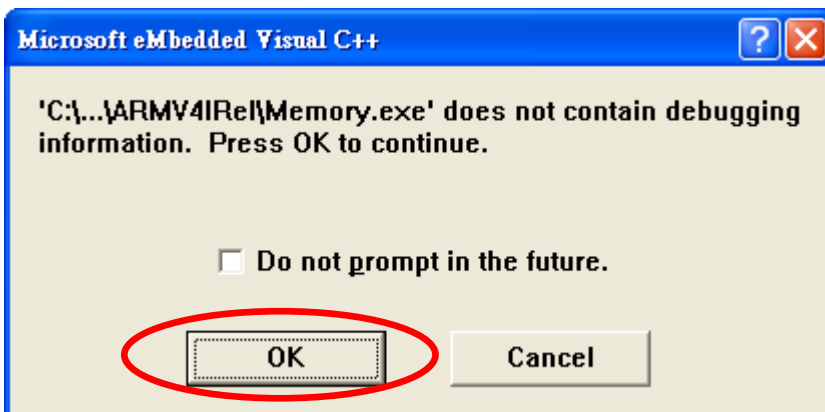


Classification	System and Application FAQ on WinCE PAC				No.	5-001-00	
Author	Tunglu-Yu	Version	1.0.1	Date	2013/05/16	Page	7/9

**Step 11:** Return to the Host PC side, then click the “OK” button, in the “Manual Server – Action” dialog.




**Step 12:** Click the “OK” button.

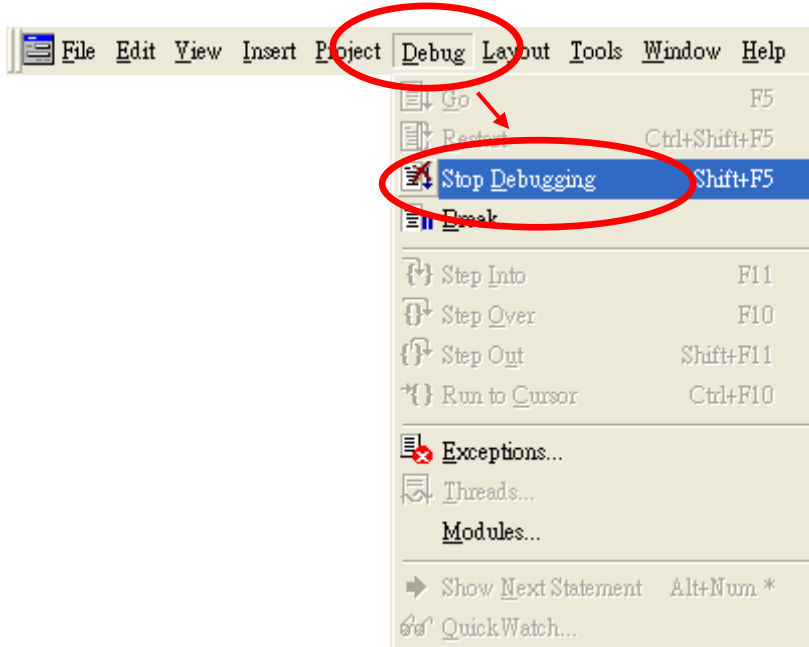


**Step 13:** After the connection is established, you can debug your programs online.

Classification	System and Application FAQ on WinCE PAC				No.	5-001-00	
Author	Tunglu-Yu	Version	1.0.1	Date	2013/05/16	Page	8/9

## Tips & Warnings

 If you want to quit the debugger and return to editing, click the “Stop Debugging” button in the “Debug” menu or press Shift+F5.





Classification	System and Application FAQ on WinCE PAC				No.	5-001-00	
Author	Tunglu-Yu	Version	1.0.1	Date	2013/05/16	Page	9/9

## Revision History

Revision	Date	Description
1.0.1	2013/05/16	NEW: Added support information for WP-5000 and VP-4131.
1.0.0	2010/02/12	Initial release