


WP-5000_ce50 OS Update History

Last update 04/27/2015

Key Features:

Features	Supported	Description
Windows CE 5.0 Core OS	Yes	
OS Language	Yes	<p>WP-5000-EN: Multi-language</p> <ul style="list-style-type: none"> - English - German - Russian - French - Spanish - Italian - Korean <p>WP-5000 -SC: Simplified Chinese WP-5000 -TC: Traditional Chinese</p>
.NET Compact Framework 2.0 .NET Compact Framework 3.5	Yes	V2.0.7045 for Visual Studio .Net 2005/2008 V3.5.7283.0 for Visual Studio .Net 2008
SQL CE 3.5	Yes	SQL CE 3.5 (3.5.5386.0)
FTP Server	Yes	
HTTP Server	Yes	
Telnet	Yes	
Printer	Yes(PCL 6)	Support for HP Laser Jet printers with USB and Ethernet interfaces
Display Resolution	Yes	800 * 600, 640 * 480
Touch Panel	Yes	Support for touch panels using the RS-232 and USB interfaces
XW board 	Yes	<p>Support modules:</p> <ul style="list-style-type: none"> XW107 (8 DI, 8 DO) XW506 (RS-232 * 6) XW507 (6 DI, 6 DO, RS-485 * 1) XW509 (4 DI, 4 DO, RS-232 * 2) XW511i (RS-485 * 3) XW514 (RS-485 * 8)

Software and Hardware Compatibility

Software		Hardware		
OS	Eboot	V1.6	V2.21	V2.4
V1.3.3.0[04/27/2014]	V1.2.1.0	Yes	Yes	Yes
V1.3.2.0[03/10/2014]	V1.2.1.0	Yes	Yes	Yes
V1.3.1.0[09/03/2013]	V1.2.0.0	Yes	Yes	Yes
V1.3.0.0[12/04/2012]	V1.2.0.0	Yes	Yes	Yes
V1.1.1.0[05/29/2012]	V1.2.0.0	Yes	Yes	(* Note 1)
V1.0.0.0[03/22/2011]	V1.0.0.0	Yes	Yes	-

Note1:

OS 1.1.1.0 works well on hardware v2.4 except support for COM 2 and COM 3.

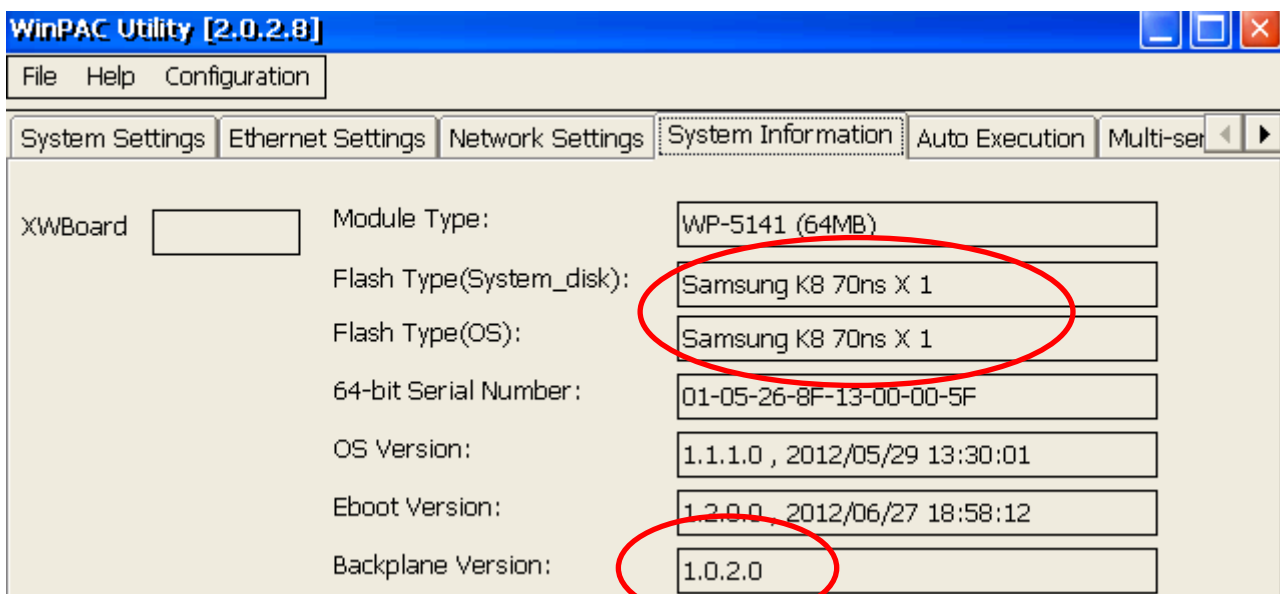
Note2:

1. V1.6 hardware is equipped with the PXA270 CPU and Samsung K8 70ns chip.
2. V2.21 hardware is equipped with the PXA270M CPU and MXIC MX29GL256F chip.
3. V2.4 hardware is equipped with the PXA270M CPU and MXIC MX29GL256F chip, while COM 2 and COM3 use the 16C950 chip.

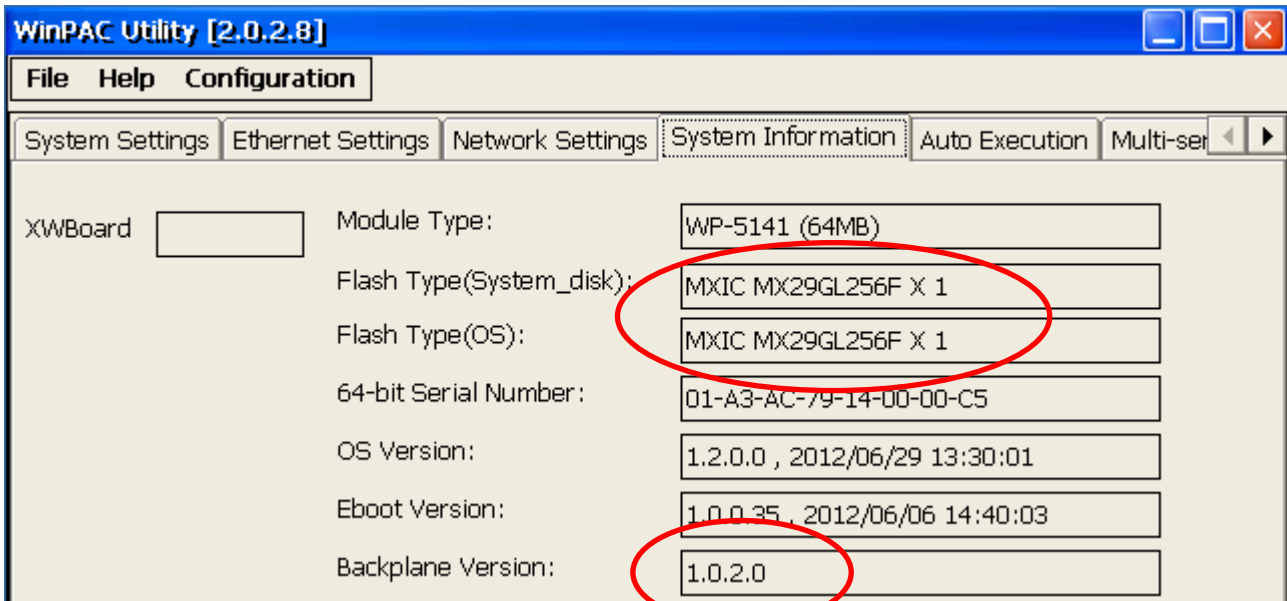
How to determine the Hardware version number

From the information displayed on the "System information" tag in WinPAC Utility (Ver. 2.0.2.8 and later), you can determine the hardware version number as below:

Hardware v.1.6: Samsung K8 70ns + Backplane 1.0.2.0



Hardware V2.21: MXIC MX29GL256F + Backplane 1.0.2.0



Hardware V2.4: MXIC MX29GL256F + Backplane 1.0.82.0

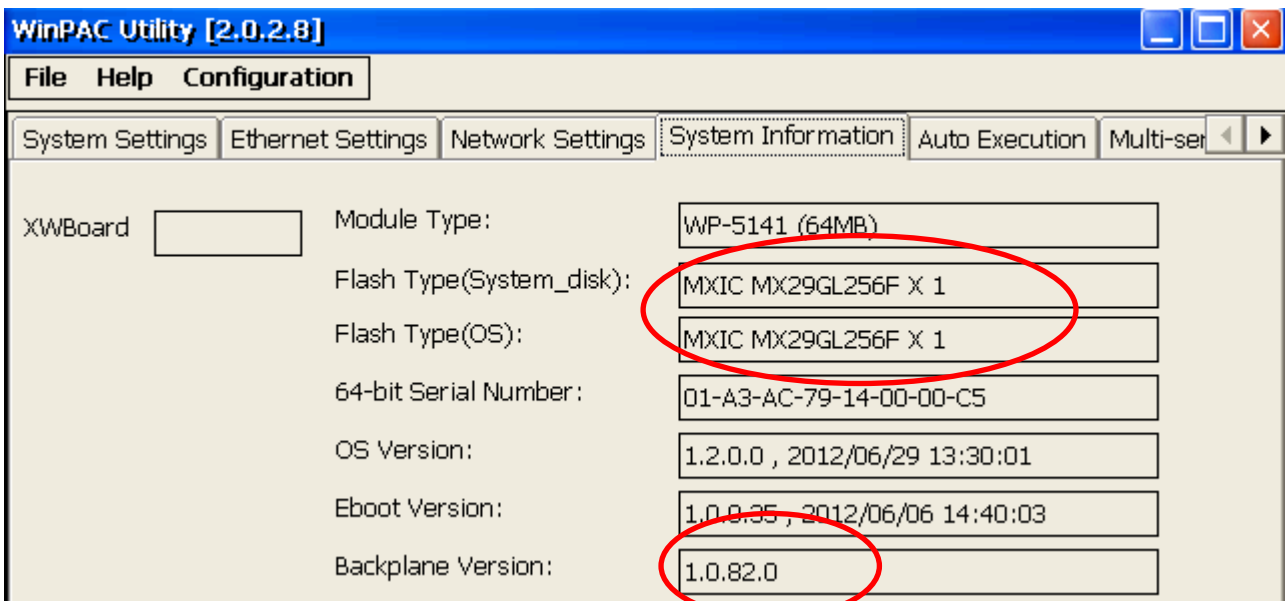


Table of Contents

WP-5000 OS 1.3.3.0 - Release Notes [04/27/2015]	5
WP-5000 OS 1.3.2.0 - Release Notes [03/10/2014]	6
WP-5000 OS 1.3.1.0 - Release Notes [09/03/2013]	7
WP-5000 OS 1.3.0.0 - Release Notes	8
OS Version 1.1.1.0 [05/29/2012].....	9
OS Version 1.0.0.0 [09/02/2010].....	10

WP-5000 OS 1.3.3.0 - Release Notes [04/27/2015]

Abstract

This release fixes a problem of LAN1 not working when the “Automatically adjust clock for daylight saving” function is enabled; and adds new supports for the power-on password protection.

New Features

- Adds support for power on password protection.

Improvements and Bug Fixes

- Solved the problem of LAN1 not working when the “Automatically adjust clock for daylight saving” function is used.
- UDPSearch settings error.

Eboot Version

- No updates (V1.2.1.0, 09/27/2011).

Software and Hardware Compatibility

Software		Hardware		
OS	Eboot	V1.6	V2.21	V2.4
V1.3.3.0 [04/27/2014]	V1.2.1.0	Yes	Yes	Yes

WinPAC Utility and PACSDK

- PACSDK DLL Version 4.3.3.0 (Released on 12/04/2014)
- WinPAC Utility Version 2.1.0.6 (Released on 11/30/2013)

WP-5000 OS 1.3.2.0 - Release Notes [03/10/2014]

Abstract

This release add new supports for non-Windows XP-style GWES that allows the user to change the button color, DHCP allocator to assign the DHCP IP address in LAN, and PPTP/L2TP protocols to connect to a VPN as a dial-up client. Fix the problem of playing boot music delay.

New Features

- Users now can change the GWES to non-Windows XP style skin and then change the button color.
- Adds support for DHCP allocator to assign the DHCP IP address in LAN.
- Adds support for PPTP/L2TP dial-up access, which can be used to connect to a VPN.

Improvements and Bug Fixes

- Fixed the problem of playing boot music delay.
- Update the micro SD driver.

Eboot 1.2.1.0 [11/12/2013]

- Fixed the COM3 send error messages problem on booting of the WP5151.

Software and Hardware Compatibility

Software		Hardware		
OS	Eboot	V1.6	V2.21	V2.4
V1.3.2.0 [03/10/2014]	V1.2.1.0	Yes	Yes	Yes

WinPAC Utility and WinPAC SDK

- PACSDK DLL Version 4.2.3.8 (Released on 10/30/2013)
- WinPAC Utility Version 2.1.0.6 (Released on 11/30/2013)

WP-5000 OS 1.3.1.0 - Release Notes [09/03/2013]

Abstract

This release fixes an issue where the CPU usage may rise to 100% after a user inserted and then removed a USB disk more than eight times; amends a problem that the micro SD card sometimes was not mounted after booting. It also solves a problem of that using multiple Modbus connections in ISaGRAF sometimes caused the LAN1 Ethernet connection to malfunction.

Improvements and Bug Fixes

- Fixed an issue in the USB driver that caused the CPU usage to rise to 100% when a user inserted and then removed a USB Disk more than 8 times.
- Modified the driver for the micro SD card to solve a problem where the micro SD card sometimes was not mounted after booting.
- Update the Ethernet LAN1 driver to prevent a problem of LAN1 Ethernet connection malfunction caused by using multiple Modbus connections in ISaGRAF.
- Solved an issue of the icon for Ethernet connection status in the taskbar may display incorrect status when the WP-5000 controller rebooted with LAN1 or LAN2 Ethernet connection was disabled.

Eboot 1.2.0.0 [06/27/2012]

- No updates

Software and Hardware Compatibility

Software		Hardware		
OS	Eboot	V1.6	V2.21	V2.4
V1.3.1.0 [09/03/2013]	V1.2.0.0	Yes	Yes	Yes

WinPAC Utility and WinPAC SDK

- PACSDK DLL V.4.2.3.7 (Released on: 05/30/2013)
- WinPAC Utility V.2.1.0.4 (Released on: 12/21/2012)

WP-5000 OS 1.3.0.0 - Release Notes

Abstract

This release adds support for PPPoE protocol which could be used to connect to an ADSL network; improves the system_disk driver to extend the useful life of the system_disk and resolve the problems that the files may not be written to system_disk, or maybe disappeared if the system rebooted when the system_disk was defragmenting in the background. An error with the system may crash caused by all COM ports (including COM ports on XW506, XW507, XW509, XW511i and XW514) communicating simultaneously has been fixed. The problem where MMTIMER sometimes wouldn't work has also been solved.

New Features

- Added support for "PPPoE" dial-up, which can be used on an ADSL connection.
- Added supporting the hardware V2.4.

Bug Fixes and Improvements

- Resolved the following issues caused by the system was rebooted when the system_disk was defragmenting in the background:
 - The files may disappeared in the folder of the system_disk
 - The files couldn't be written or copied to the system_disk
 - The WP-5000 may not boot
- Increased the system_disk read/write speed and extended the useful life of the system_disk.
- Fixed an error with the driver for RS-232, RS-422, RS-485 expansion XW board (XW506, XW507, XW509, XW511i and XW514) that sometimes the system crash caused by all COM ports were communicating at the same time.
- Fixed the problem where MMTIMER sometimes wouldn't work.

Eboot 1.2.0.0 [06/27/2012]

- No update

Software and Hardware Compatibility

Software		Hardware		
OS	Eboot	V1.6	V2.21	V2.4
V1.3.0.0[12/04/2012]	V1.2.0.0	Yes	Yes	Yes

WinPAC Utility and WinPAC SDK

- PACSDK DLL Version 4.2.2.5 (11/21/2012)
- WinPAC Utility Version 2.1.0.4 (03/04/2013)

OS Version 1.1.1.0 [05/29/2012]

Abstract

This release adds support for SMB File Server to share data through Ethernet, hiding desktop icons, Korean User Interface and Input Method Editor, and NET Compact Framework 3.5; adds StudioSNMP-related files and a function for using console controls on safe mode, and updates the DM9000 driver to fix the issues of communication fault and maximum speed displayed.

New Features

- Added support for SMB File Server for sharing data through Ethernet.
- Added support for the Korean User Interface and Input Method Editor.
- Added support for .NET Compact Framework 3.5
- Added support for InduSoft StudioSNMP-related files.
- Added a function that allows desktop icons to be hidden.
- Added support for using COM 1 as a console port on safe mode.
- Added support for the hardware V2.21 and V2.4. (Page 2)

Bug Fixes and Improvements

- Resolved an issue of a startup program fault that was caused by the relevant driver being loaded later than the execution of the startup program.
- Updated the driver for the DM9000 to show connection speeds up to 100MB/second.
- Rectified the problem that caused LAN1/2 to intermittently fail after rebooting.

Eboot 1.2.0.0 [06/27/2012]

- Added support for the MXIC MX28GL256F Flash chip on hardware Ver. 2.21.

Software and Hardware Compatibility

Software		Hardware		
OS	Eboot	V1.6	V2.21	V2.4
V1.1.1.0 [05/29/2012]	V1.2.0.0	Yes	Yes	(* Note 1)

OS Version 1.0.0.0 [09/02/2010]

FIRST RELEASE

Eboot Version 1.0.0.0

FIRST RELEASE