


VP-23Wx OS 2.4.1.0 Release Notes

Release Date: 04/12/2013

Key Features:

Features	Supported	Description
OS Language	Yes	VP-23Wx-EN: Multi-language including : <ul style="list-style-type: none"> - English - German - Russian - French - Spanish - Italian - Korean VP-23Wx-SC: Simplified Chinese VP-23Wx-TC: Traditional Chinese
.NET Compact Framework 2.0 .NET Compact Framework 3.5	Yes	V2.0.7045 for Visual Studio .Net 2005/2008 V3.5.7283.0 for Visual Studio .Net 2008
SQL CE 3.5	Yes	SQL CE 3.5 (3.5.5386.0)
FTP Server	Yes	
HTTP Server	Yes	
Telnet	Yes	
Printer	Yes (PCL 6)	Support for HP Laser Jet printers with USB and Ethernet interfaces
Display Resolution	Yes	320 * 240
Multiport Serial Communication Module  The maximum number of ports that can be used is 12. (i.e., 3 slots * 4 ports per module = max. of 12 ports)	Yes	Supported modules: I-8112iW (RS-232 *2) I-8114W (RS-232 *4) I-8114iW (RS-232 *4) I-8142iW (RS-485 *2) I-8144iW (RS-485 *4) I-8212W, I-8213W (GPS) (Industrial Tri-band 2G module) I-8212W-3GWA, I-8213W-3GWA (GPS) (Industrial Tri-band 3G module)

Software and Hardware Compatibility

Software		Hardware			
OS	Eboot	PCB V1.5	PCB V1.7	PCB V2.0	PCB V2.2
V.2.4.1.0 [04/12/2013]	V.1.2.0.0	Yes	Yes	Yes	Yes
V.2.2.0.0 [07/18/2012]	V.1.2.0.0	Yes	Yes	Yes	Yes
V.2.0.0.3 [01/21/2011]	V.1.1.0.3	Yes	Yes	(* Note1)	-
V.1.1.0.2 [07/15/2010]	V.1.0.1.3	Yes	-	-	-
V.1.0.0.7 [06/20/2009]	V.1.0.0.4	Yes	-	-	-

Note 1:

OS 2.0.0.3 works well on hardware v2.0 except support for the audio.

Note 2:

The hardware version number can be found on the PCB

Determining the hardware version

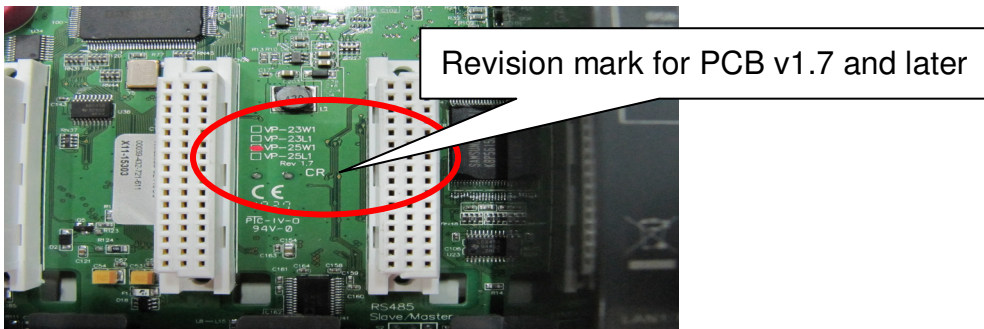
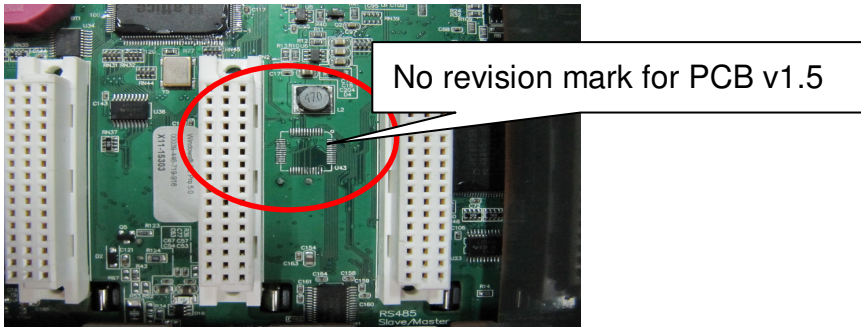


Table of Contents

VP-23Wx OS V.2.4.1.0 Release Notes	4
How to Add a PPPoE Dial-up Connection	6

VP-23Wx OS V.2.4.1.0 Release Notes

A bug in the COM0 driver for I/O slots has been fixed to prevent the OS from hanging while communicating with the I-87K module. Added support for the hardware v2.30 and the I-8144iW hardware v2.20. Improves the system_disk driver to extend the useful life of the system_disk and resolve the problems that the files may not be written to system_disk, or maybe disappeared if the system rebooted when the system_disk was defragmenting in the background. In addition, improvements have also been made to increase the system_disk read/write speed and extend the life of the system_disk. An error with the system may crash caused by four COM ports were communicating simultaneously has been fixed. The problem where MMTIMER sometimes wouldn't work has also been solved. And supporting for PPPoE protocol has been added, it can be used to connect to an ADSL network.

New Feature

- Added support for the hardware V2.20、V2.30 and the I-8144iW hardware V2.20.
- Added supporting for "PPPoE" dial-up, which can be used on an ADSL connection.

Bug Fixed

- A bug in the COM0 driver for I/O slots has been fixed to prevent the OS from hanging while communicating with the I-87K module.
- Resolved the following issues caused by the system was rebooted when the system_disk was defragmenting in the background:
 - The files may disappeared in the folder of the system_disk
 - The files couldn't be written or copied to the system_disk
 - The VP-23W1 may not boot
- Increased the system_disk read/write speed and extended the life of the system_disk.
- Fixed an error with the driver for RS-232, RS-422, RS-485 expansion (i-8114w, i-8144w, i-8112w, i-8142w...) that sometimes the system crash caused by all COM ports were communicating at the same time.
- Fixed the problem where MMTIMER sometimes wouldn't work.

Eboot Version

- No updates (V.1.2.0.0, 03/28/2012)

Software and Hardware Compatibility

Software		Hardware			
OS	Eboot	PCB V1.5	PCB V1.7	PCB V2.0	PCB V2.30
V.2.4.1.0	V.1.2.0.0	Yes	Yes	Yes	Yes

ViewPAC Utility and WinPAC SDK

- PACSDK DLL Version 4.2.3.5 (02/21/2013)
- ViewPAC Utility Version 2.1.0.5 (04/11/2013)

How to Add a PPPoE Dial-up Connection

Step 1: Open the Network settings by clicking "Settings" _ "Control Panel" and then double-click the "Network and Dial-up connections" icon.



Step 2: Double-click the "Make New Connection" icon to create a new connection.



Step 3: In the "Make New Connection" dialog box, enter a name for the connection and select the "PPP over Ethernet (PPPoE)" option as the connection type, and then click the "Next" button.

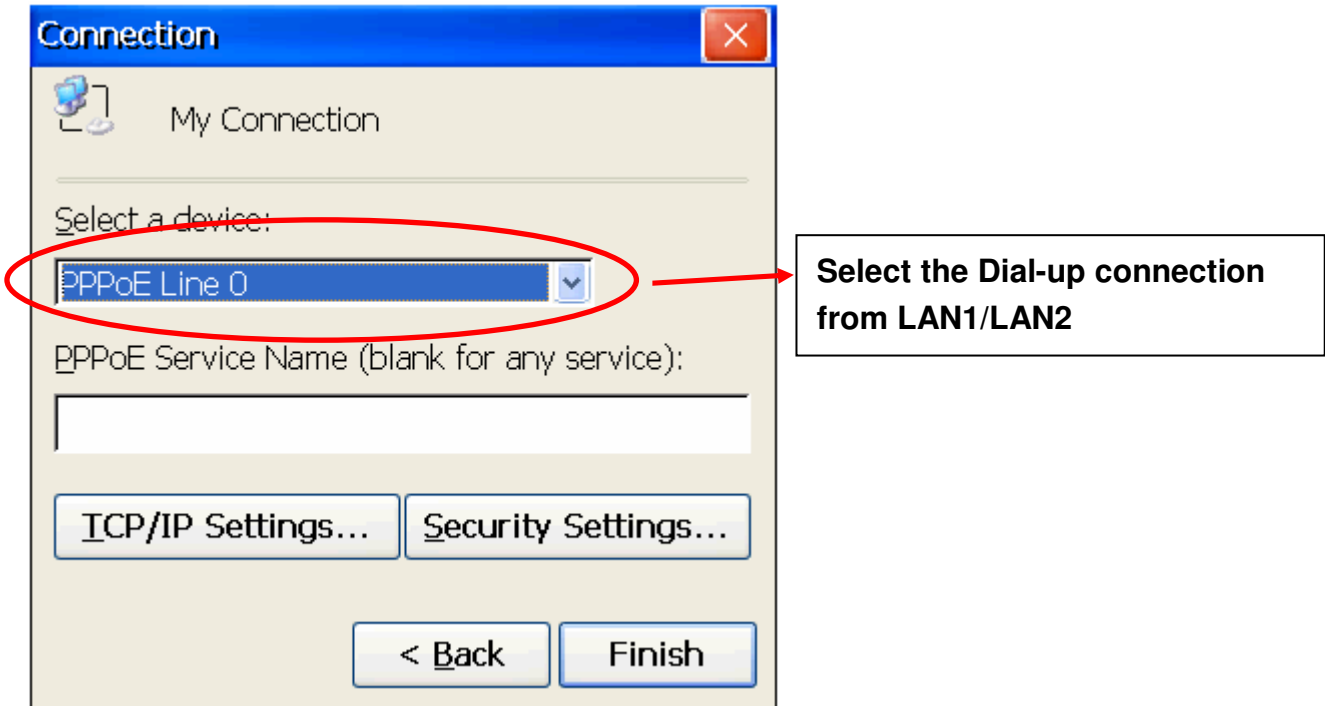
A screenshot of the "Make New Connection" dialog box. It has a title bar with "Make New Connection" and a close button. The main area contains a text box for "Type a name for the connection:" with "My Connection" entered. Below is a section "Select the connection type:" with radio buttons for "Dial-Up Connection", "Direct Connection", "Virtual Private Network (PPTP)", "Virtual Private Network (L2TP)", and "PPP over Ethernet [PPPoE]". The "PPP over Ethernet [PPPoE]" option is selected and circled in red. At the bottom are "< Back" and "Next >" buttons, with the "Next >" button also circled in red. Three callout boxes on the right point to these elements: "1. Enter a name for the connection" points to the text box, "2. Select 'PPP over Ethernet'" points to the selected radio button, and "3. Click the 'Next' button" points to the "Next >" button.

1. Enter a name for the connection

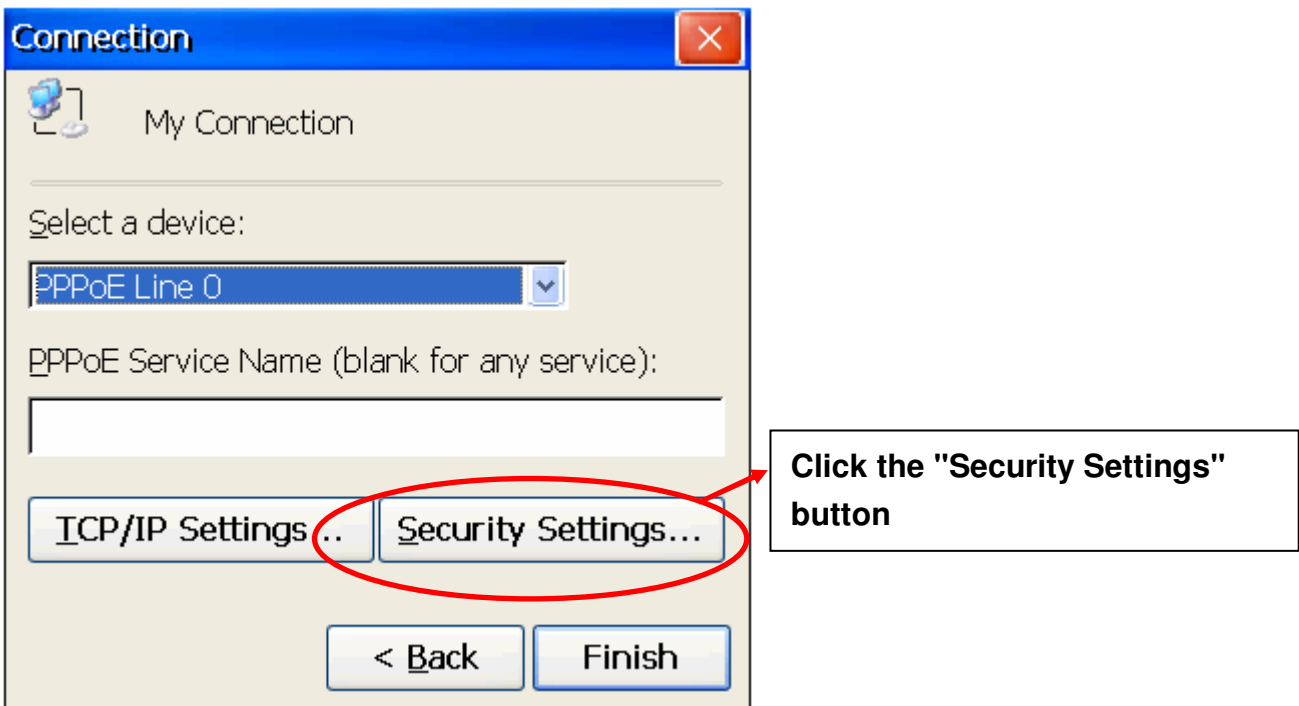
2. Select "PPP over Ethernet"

3. Click the "Next" button

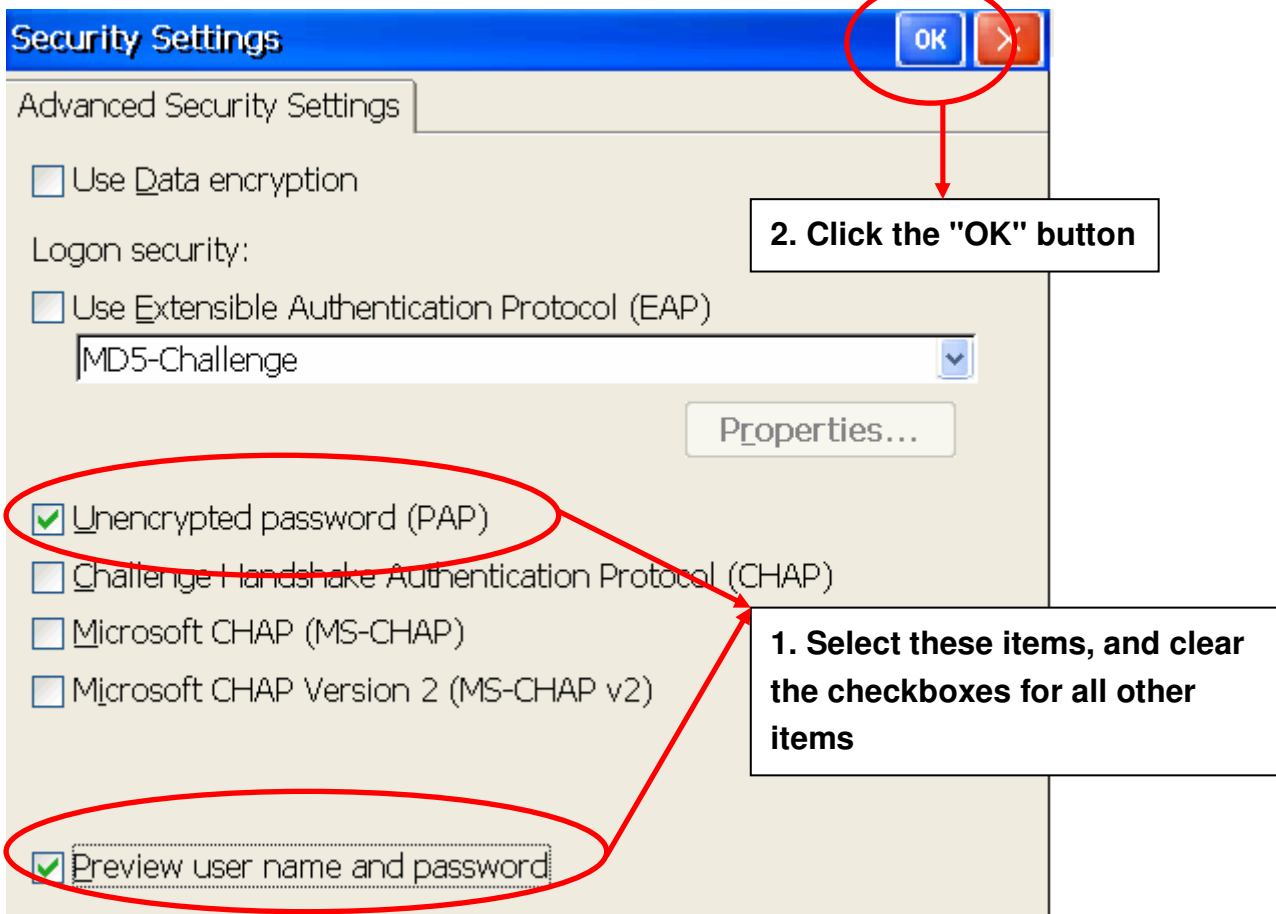
Step 4: In the "Select a device" drop-down menu, select the "PPPoE Line 0" option indicated as the dial-up connection from LAN1, select the "PPPoE Line 1" option indicated as the dial-up connection from LAN2.



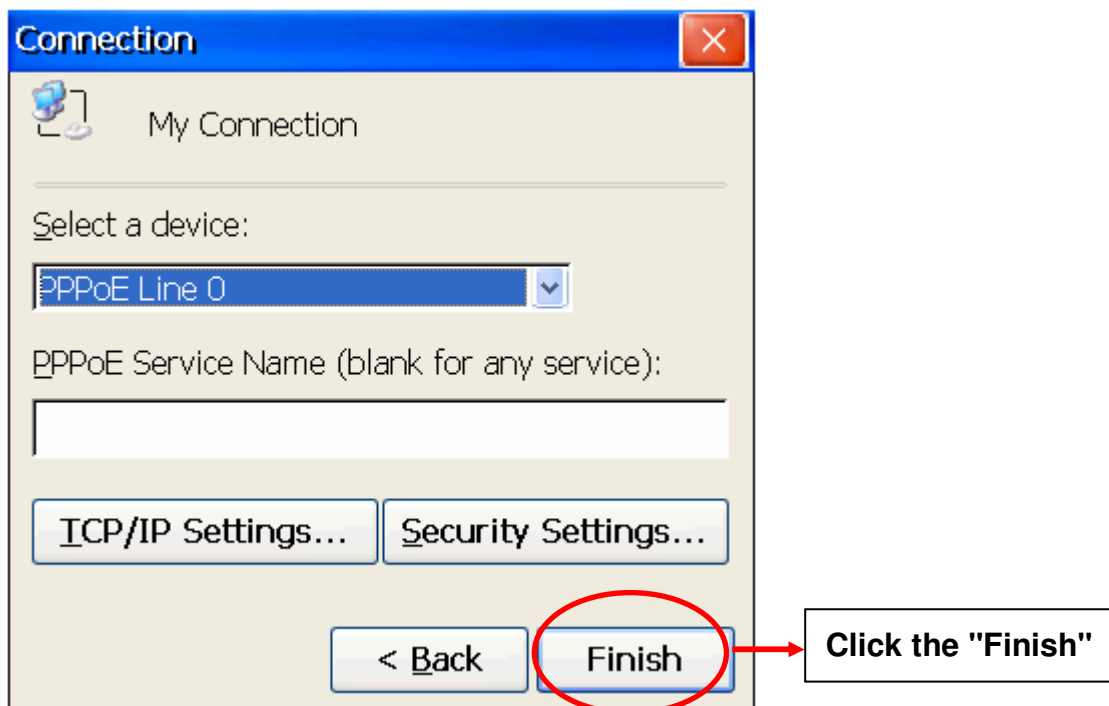
Step 5: Click the "Security Settings" button.



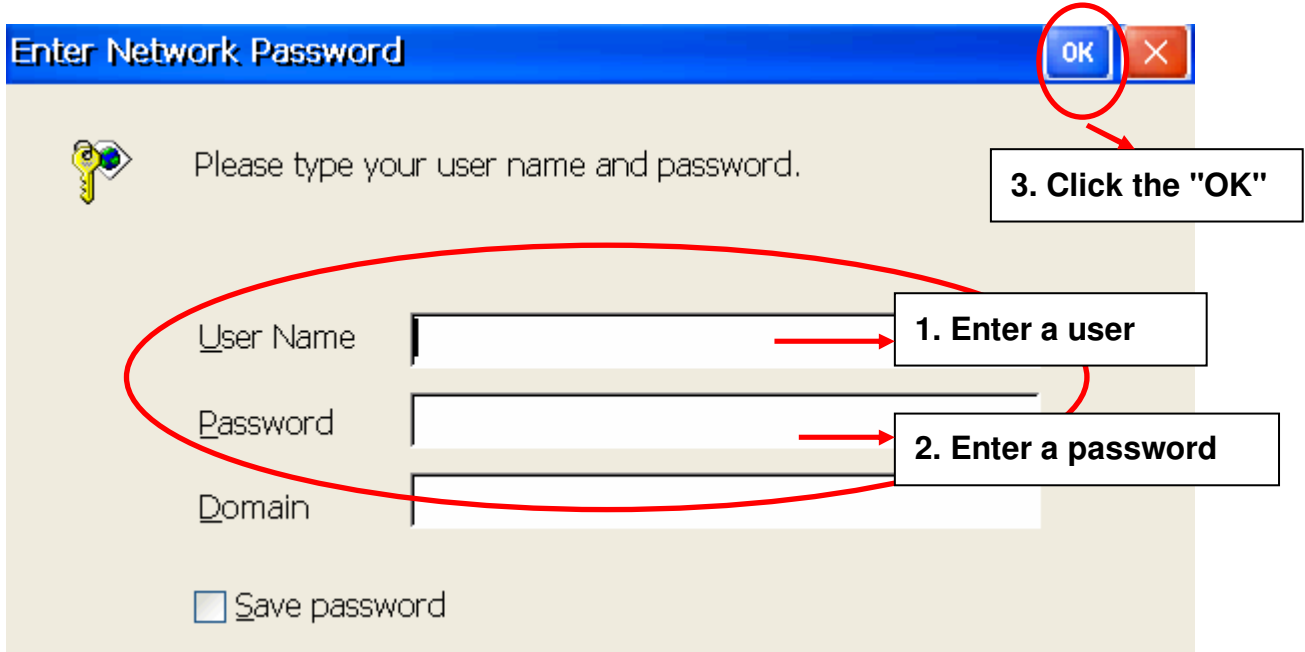
Step 6: In the "Security Settings" dialog box, check the "Unencrypted password (PAP)" and the "Preview user name and password" checkbox items, and clear check boxes for all other items, then click the "OK" button._



Step 7: Click the "Finish" button to save the settings and complete the creation of the new connection.



Step 8: In the Network settings window, double-click the icon for the new "PPPoE" connection and then enter a user name and password in the login window. If you wish to save the password for future use, check the "Save password" checkbox. Click the "OK" button to establish a connection.



Step 9: A status window will be displayed with the message "Connected", indicating that the connection was successfully established.

