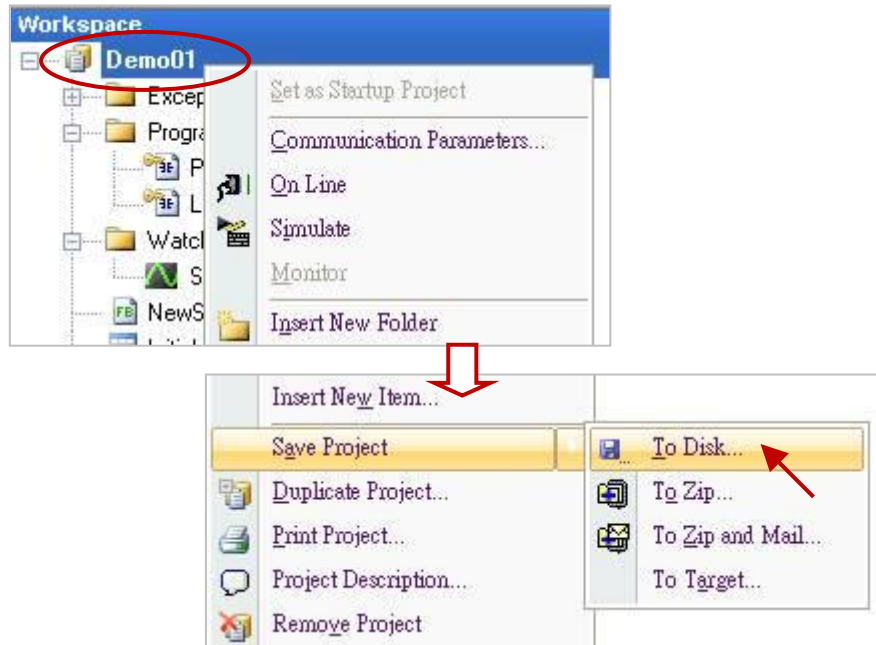


Classification	Win-GRAF English FAQ-003						
Author	Eva Li	Version	1.0.0	Date	Oct. 2015	Page	1 / 3

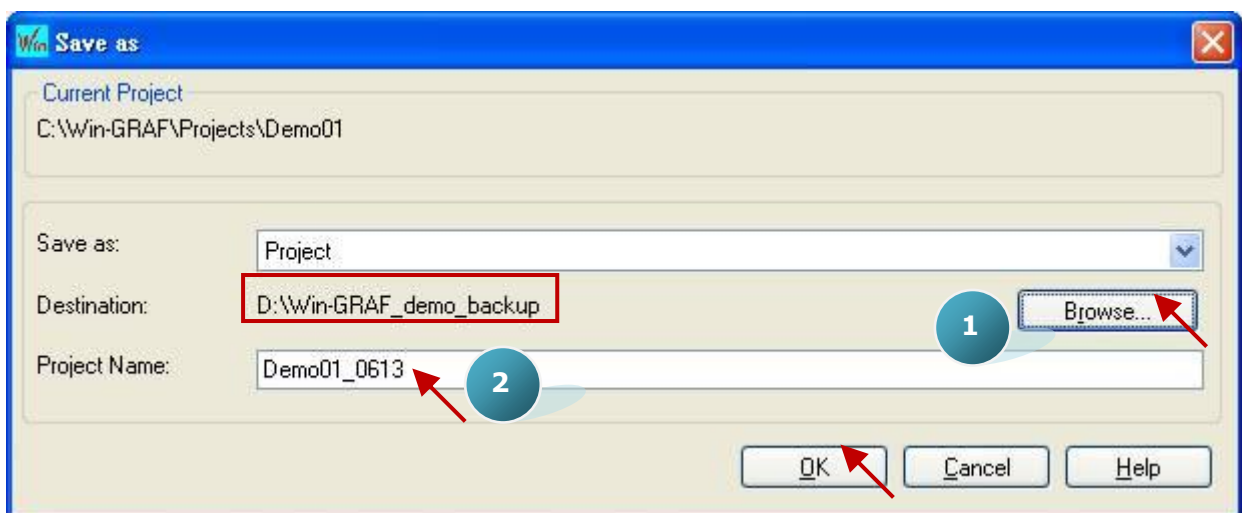
How to Backup/Restore a Win-GRAF Project?

1.1. Back up A Win-GRAF Project

1. Mouse right-click on the project name (e.g., "Demo01") and select "Save Project" and then "To Disk".



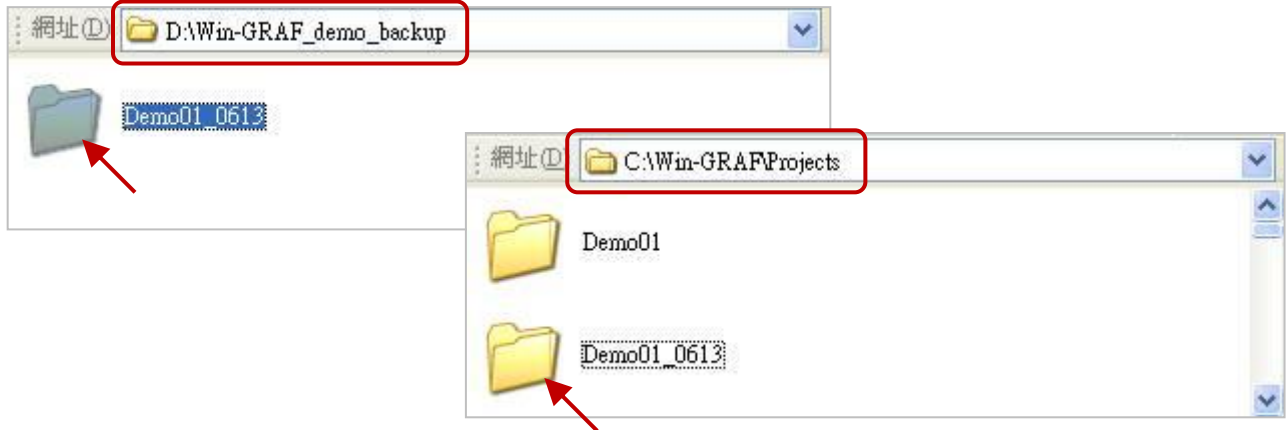
2. Click on the "Browse" button to assign a directory you want to save the project (e.g., D:\Win-GRAF_demo_backup), fill in the project name (e.g., "Demo01_0613"), and then click "OK" to back up the project.



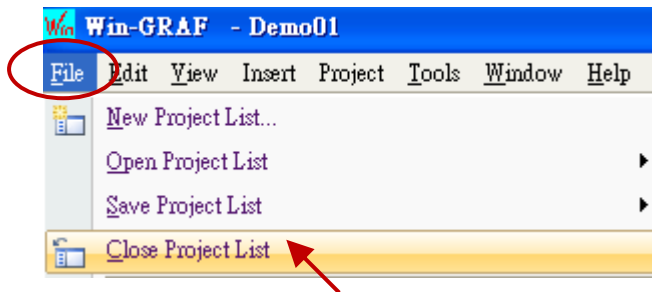
Classification	Win-GRAF English FAQ-003						
Author	Eva Li	Version	1.0.0	Date	Oct. 2015	Page	2 / 3

1.2. Restore a Win-GRAF Project

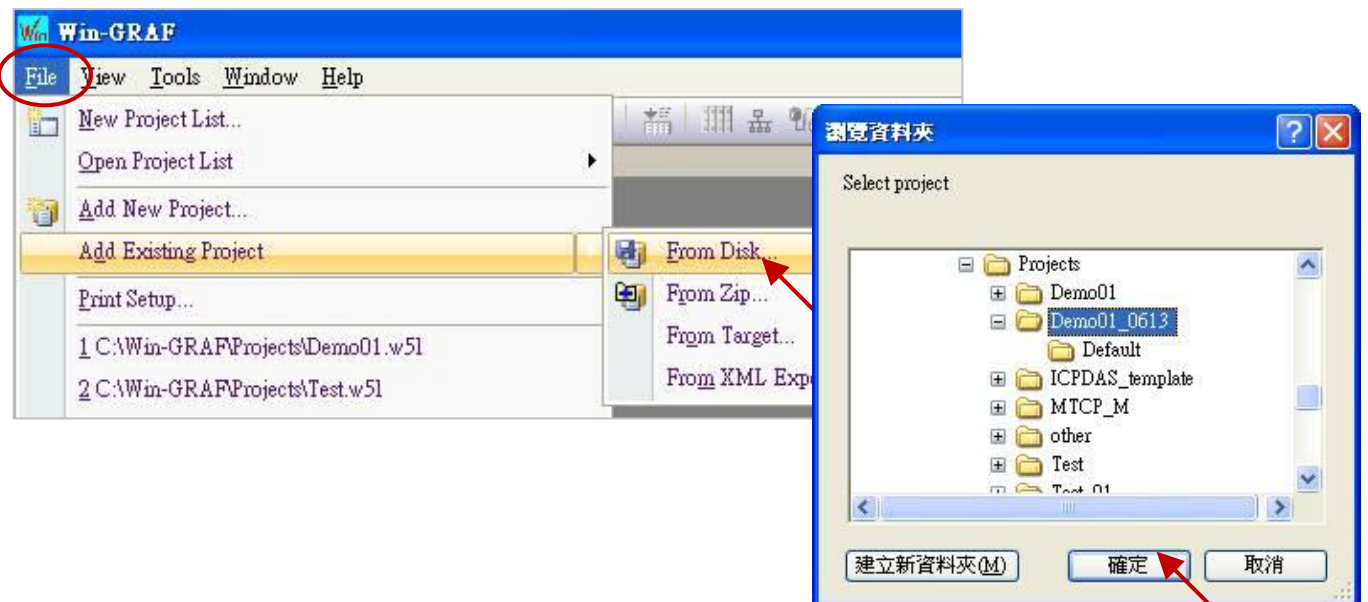
1. Copy the previously backed up the project folder (e.g., "Demo01_0613") into "C:\Win-GRAF\Projects".



2. Click the menu bar "File" > "Close Project List" to close all opened project windows.



3. Click the menu bar "File" > "Add Existing Project" > "From Disk", select the project you want (e.g., "Demo01_0613") in the "C:\Win-GRAF\" directory, and then click "OK" to restore the project.



Classification	Win-GRAF English FAQ-003						
Author	Eva Li	Version	1.0.0	Date	Oct. 2015	Page	3 / 3

The user can recover or add an existing project in this way.

