



WISE-5231M / WISE-5236M Quick Start

v1.0, March 2020

Technical Support

WISE-5231M / WISE-5236M User Manual:

<http://wise.icpdas.com/Download.html>

ftp://ftp.icpdas.com/pub/cd/wise_cd/

WISE-5231M / WISE-5236M Website:

<http://wise.icpdas.com>

What's In the Box?

In addition to this document, the package includes the following items:



WISE-5231M
or
WISE-5236M



microSD card and
micro SD/SD
adapter



Screw Driver
2.4mm (1C016)



44 mm DIN-Rail
Clip



M3x6L Screw * 4



Pin Terminal * 16

1

Configuring the boot mode

Before starting WISE-5231M / WISE-5236M at the first time, be sure that the switch is placed in the "0" position.

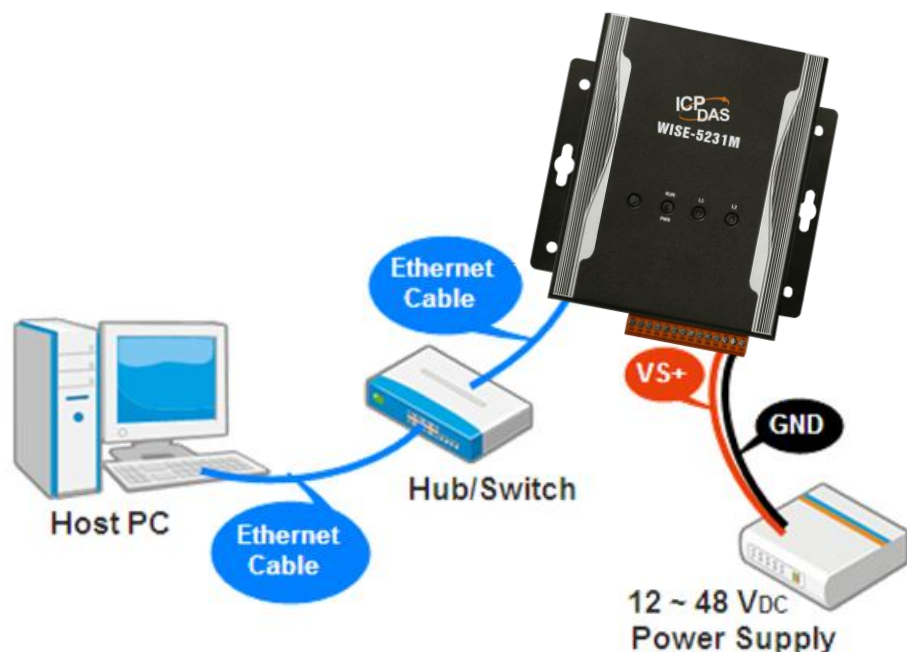


2

Connect to PC, Network and Power

The WISE-5231M / WISE-5236M is equipped with an RJ-45 Ethernet port for connection to an Ethernet hub/switch and PC. You can also link directly the WISE-5231M / WISE-5236M to PC with an Ethernet cable.

After power is connected, please wait one minute for WISE-5231M / WISE-5236M start-up procedure. When the "RUN/PWR" light starts flashing, it represents



3

Using Browser to Assign a New IP

The WISE-5231M / WISE-5236M is an Ethernet controller, which comes with a default IP setting; therefore, you must first assign a new IP setting to the LAN1 port of WISE-5231M / WISE-5236M. The factory default IP settings of WISE-5231M / WISE-5236M are as follows:

Item	Default
IP Address	192.168.255.1
Subnet Mask	255.255.0.0
Gateway	192.168.0.1
DNS Server	8.8.8.8(Default: Google DNS Server)

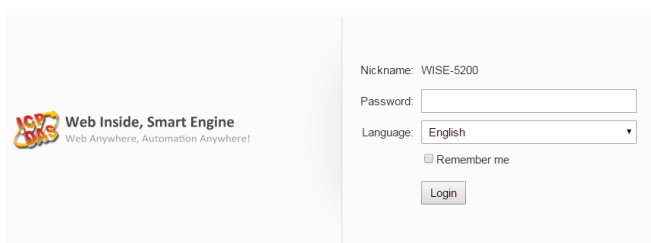
Follow the following steps for WISE-5231M/WISE-5236M new IP setting:

Step1: Change the PC's IP setting same as WISE-5231M/WISE-5236M's IP domain. For example, set PC's IP as 192.168.255.10.

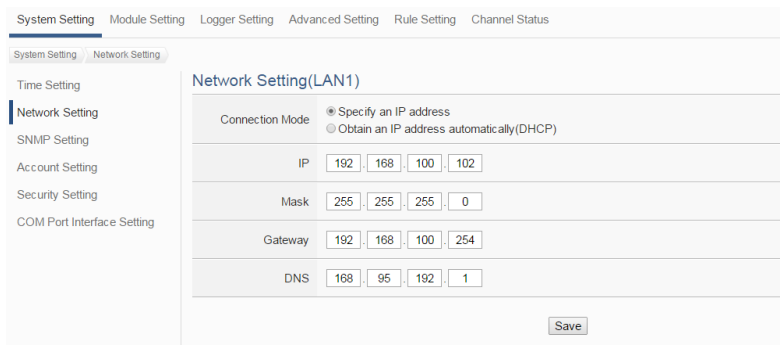
Step2: Make sure the PC and WISE-5231M / WISE-5236M is connecting through Ethernet.

Step3: Open a PC side browser, and type in the URL address (http://192.168.255.1) of the WISE-5231M / WISE-5236M to connect the Web Server in WISE-5231M / WISE-5236M.

Step4: Use default Administrator password "Admin" to login the system.



Step5: Please follow the sequence【 System Setting 】→【 Network Setting 】→ 【 Network Setting(LAN1) 】 to change the IP setting of WISE-5231M / WISE-5236M.



Step6: After complete the IP setting, please save it, and then the new IP setting will take effect.

4 Go to WISE-5231M / WISE-5236M Web Site to edit Control Logic

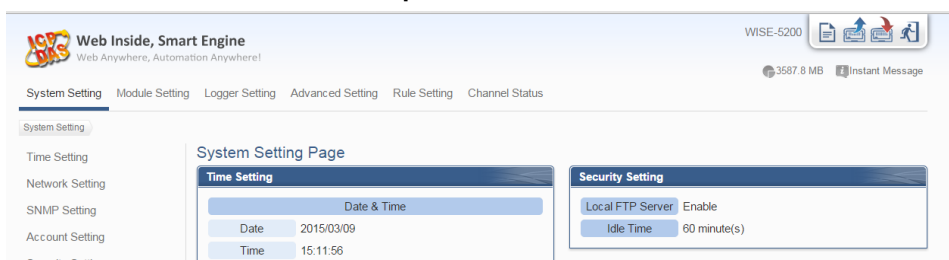
Please follow the steps below to implement IF-THEN-ELSE control logic on ICP DAS WISE-5231M / WISE-5236M controllers:

Step1: Open a browser, and type in the URL address of the WISE-5231M / WISE-5236M

Open a browser and type in the URL address(The new IP setting) of the WISE-5231M / WISE-5236M in the address bar. Make sure the IP address is accurate.

Step2: Get on the WISE-5231M / WISE-5236M web site

Get on the WISE-5231M / WISE-5236M web site. Login with the default password “Admin”. Implement the control logic configuration in the order: 【 Module Setting 】→【 Advanced Setting 】→【 Rule Setting 】→ 【 Save 】 , then complete the IF-THEN-ELSE rule editing.



Step3: For more detail information, please refer to WISE-5231M / WISE-5236M User Manual



WISE-5231M / WISE-5236M 快速上手指南

v1.0, March 2020

技術支援

WISE-5231M / WISE-5236M 使用手冊：

<http://wise.icpdas.com/Download.html>

ftp://ftp.icpdas.com/pub/cd/wise_cd/

WISE-5231M / WISE-5236M 產品網頁：

<http://wise.icpdas.com>

產品內容

除了本『快速上手指南』外，此產品內容還包括以下配件：



WISE-5231M
或
WISE-5236M



microSD 卡及
micro SD/SD 轉接卡



螺絲起子 2.4mm
(1C016)



44 mm DIN-Rail
導軌固定架



M3x6L 螺絲 * 4



歐式壓著端子 * 16

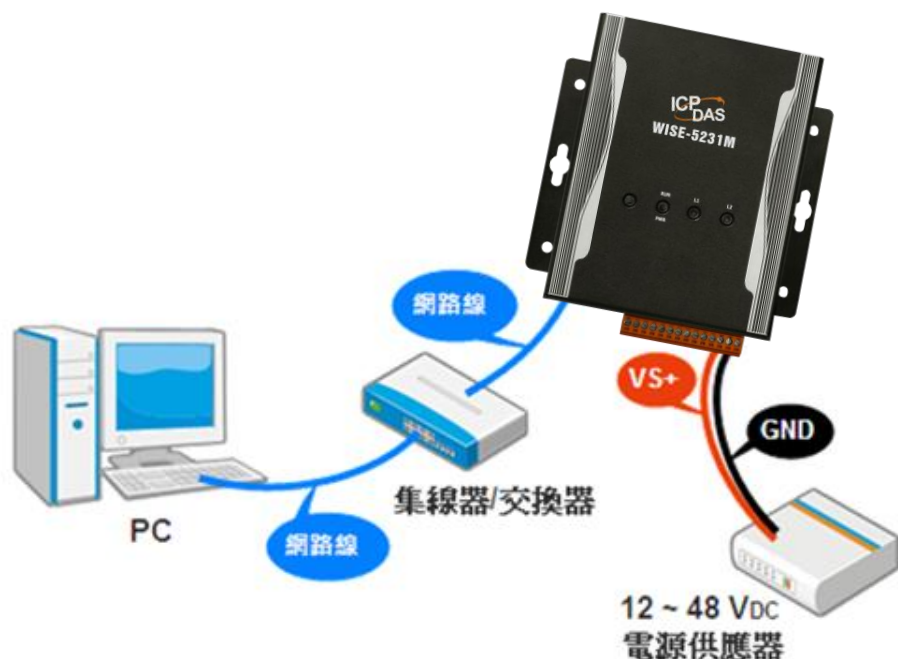
1 檢視啟動模式

在第一次啟動 WISE-5231M / WISE-5236M 前，請先確認旋轉式開關的位置在“0”。



2 連接 PC 主機、網路及電源

WISE-5231M / WISE-5236M 配有標準的網路接口 RJ-45，可透過網路集線器/交換器與 PC 連接，也可直接連到 PC 的網路接口。接上電源後，**WISE-5231M / WISE-5236M 開機程序須等待約一分鐘，待"RUN/PWR"燈開始閃爍則代表開機完成，可進行連線與設定。**



3

設定 WISE-5231M / WISE-5236M 的 IP 位址

WISE-5231M / WISE-5236M 在出廠時會統一預設網路設定值，使用者可以依照下列步驟自行變更網路設定。網路出廠預設值為：

項目	預設值
IP 位址	192.168.255.1
子網路遮罩 (Subnet Mask)	255.255.0.0
通訊閘道 (Gateway)	192.168.0.1
DNS Server	8.8.8.8(預設為 Google DNS Server)

步驟 1：將 PC 的網路設定更改為與 WISE-5231M / WISE-5236M 相同網路區段。例如 IP：192.168.255.10

步驟 2：確認 WISE-5231M / WISE-5236M 與 PC 已透過網路正確連接。

步驟 3：開啟 PC 端的瀏覽器並於網址列輸入 <http://192.168.255.1>。

步驟 4：輸入管理者預設密碼“Admin”進行登入。



步驟 5：登入成功後至【系統參數設定】→【網路設定】→【網路設定(LAN1)】，根據實際網路環境更改網路設定。



步驟 6：儲存成功後將 WISE-5231M/WISE-5236M 連接至實際網路環境。

4

前往 WISE-5231M / WISE-5236M 網頁進行邏輯規則設定

使用者透過 WISE-5231M / WISE-5236M 所提供的網頁，只需使用滑鼠點選設定，即可完成控制器上的 I/O 模組連接與工作邏輯的規劃。

步驟 1：開啟瀏覽器，填入 WISE 模組 IP 作為瀏覽器的 URL 位址

開啟電腦上的瀏覽器，輸入 WISE-5231M / WISE-5236M 的 IP 作為 URL 位址(如有重新設定 IP，請確認所輸入 IP 是否正確)。

步驟 2：進入 WISE-5231M / WISE-5236M 的設定頁面

進入 WISE-5231M / WISE-5236M 所提供的參數設定頁面，使用預設密碼“Admin”登入後，僅需依照首頁上的設定流程：【模組設定】→【進階功能設定】→【邏輯規則設定】→【寫入設定】，即可完成 WISE 控制器的邏輯規則編排。



步驟 3：設定流程中的細節，請參照 WISE-5231M / WISE-5236M 操作手冊