

ICE iPush[®] Communication Server

Embedded

Quick Start

for WinCon-8000

By: ICE Technology Corp., Sept 23, 2004

Ver.: 1.3.11

E-Mail \ service@icetechnology.com Tel \ +886-2-23961880 Fax \ +886-2-23961881

Copyright © 2004 ICE Technology Corporation. All Rights Reserved.

iPush Server is the registered trademark of ICE Technology Corporation.

iPush[®] Embedded Quick Start with IOModuleViewer

About IOModuleViewer

The IOModuleViewer is a VB sample client for iPush[®] Embedded, provided by ICE Technology. It can be run on Windows 2000 / XP / NT operating system. We use it here to explore the real-time messaging behaviors of I/O devices through I/O Module of iPush[®] Communication Server Embedded (iPush[®] Embedded, for short).

Register iceHMsg.ocx

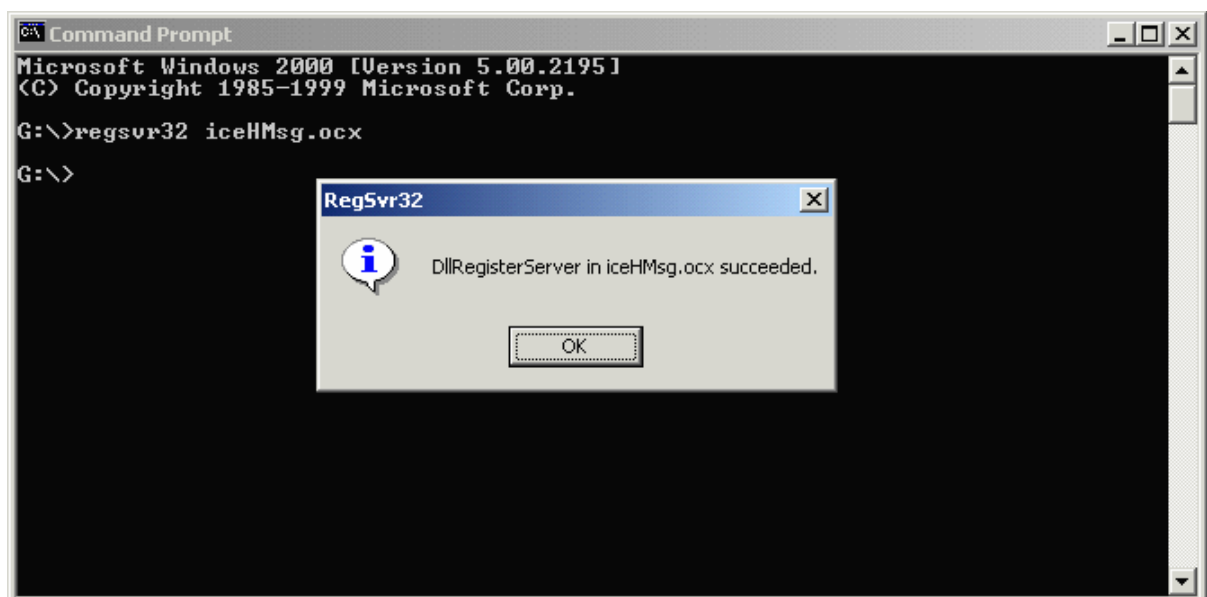
You must register iceHMsg.ocx and iPushX.ocx **BOTH** to your Windows system before you run IOModuleViewer.

- ▶ Execute [Start] / [Programs] / [Accessories] / [Command Prompt], execute the command below in the Command Prompt window:


```
G:\> regsvr32 iceHMsg.ocx [Enter] (supposed iceHMsg.ocx is put under G:\)
```

```
G:\> regsvr32 iPushX.ocx [Enter]
```

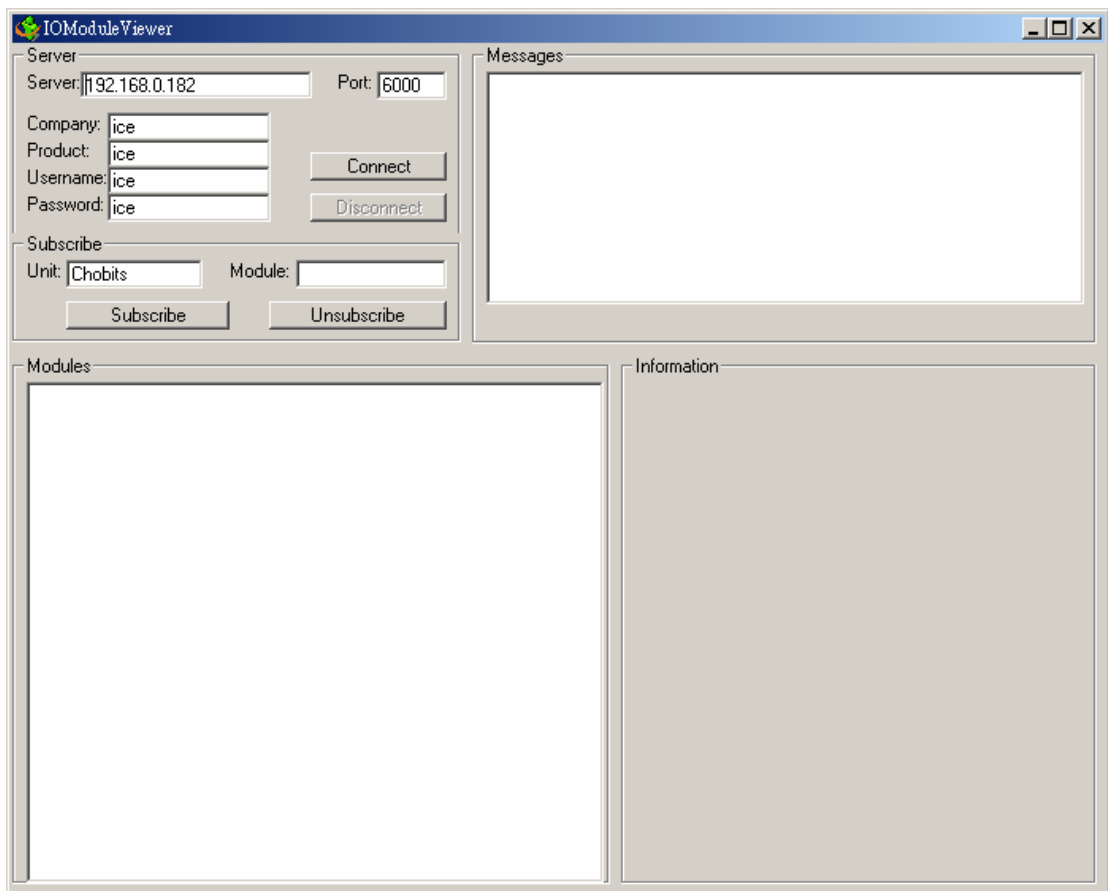
A dialog box will appear if registered successfully, as below:




Start IOModuleViewer

Double-click  , the icon of IOModuleViewer.exe to start the program.

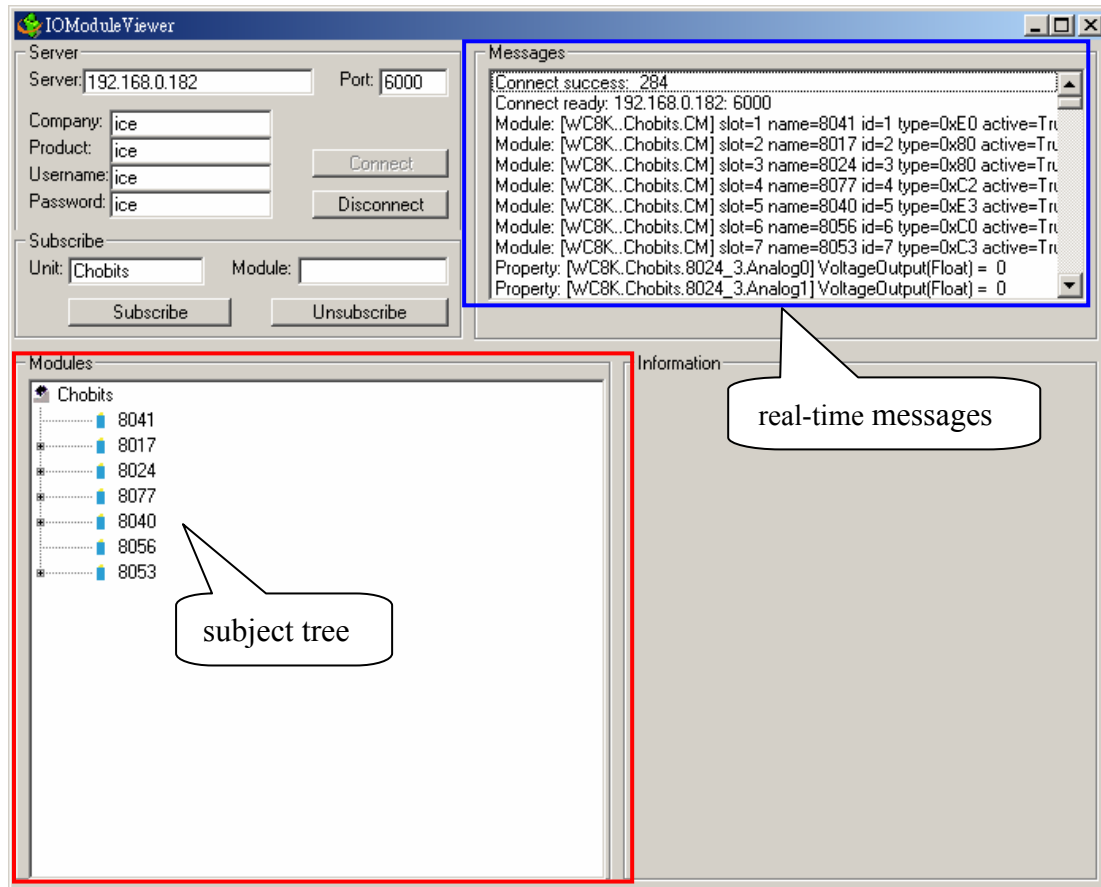
A window will be opened as below:



Connect to iPush[®] Embedded

Make sure all the information needed for connecting to iPush[®] Embedded are correct: Server **IP / Port / Company / Product / User / Password**, then click .

** For more detail about the information of **Company / Product / User / Password**, please check the programming guide and IOModule Programming Guide for iPush client application development.*

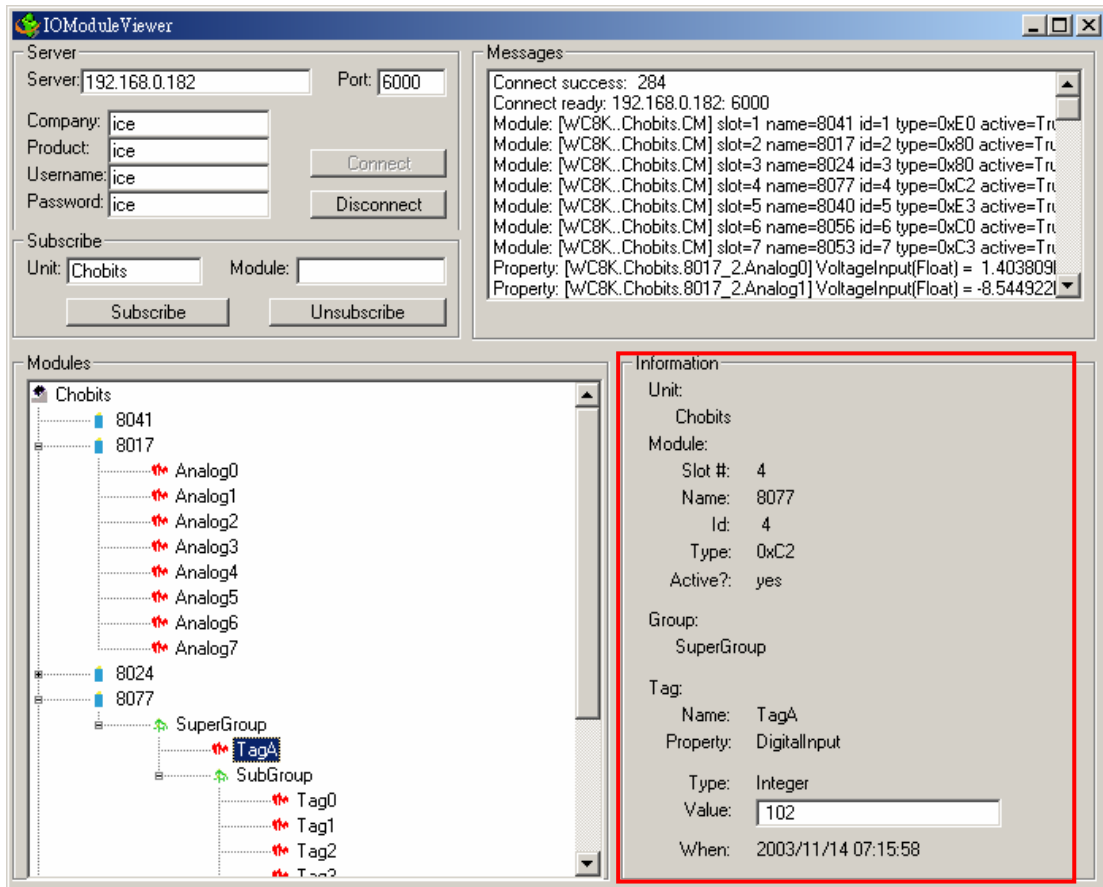


Real-time messaging with iPush[®] Embedded

If connected successfully, you may see the subject tree showed in the Modules block and real-time messages showed in the Messages block.

Click any '+' symbol in the Modules block to expand the subject tree. Click any node or leaf of the tree to show more information about the specified group or tag. As figure below, the information are belong to subject **WC8K.Chobits.8077_4.SuperGroup.TagA**:

Warning: IF ANY SYSTEM CONFIGURATION CHANGES (LIKE SAME MODULE, BUT SLOT CHANGE), PLEASE CHECK ALL SUBSCRIBED TAG IN PROGRAMMING (LIKE 8053_1) CODE IS IDENTICAL WITH I/O MODULES ON WINCON-8000 (MIGHT 8053 at SLOT 1). YOU CAN USE PEPROT FUNCTION (Demonstrated at VC Client) TO GET CURRENT SYSTEM STATUS.



The screenshot shows the IOModuleViewer application window. It is divided into several sections:

- Server:** Contains fields for Server (192.168.0.182), Port (6000), Company (ice), Product (ice), Username (ice), and Password (ice). There are 'Connect' and 'Disconnect' buttons.
- Subscribe:** Contains fields for Unit (Chobits) and Module, with 'Subscribe' and 'Unsubscribe' buttons.
- Messages:** A text area displaying connection logs and module status messages, such as 'Connect success: 284' and 'Module: [WC8K..Chobits.CM] slot=4 name=8077 id=4 type=0xC2 active=Tru'.
- Modules:** A tree view showing a hierarchy of modules under 'Chobits', including slots 8041, 8017, 8024, and 8077. Under 8077, there is a 'SuperGroup' containing 'TagA', which is selected.
- Information:** A detailed view of the selected 'TagA' property, showing:
 - Unit: Chobits
 - Module: Slot #: 4, Name: 8077, Id: 4, Type: 0xC2, Active?: yes
 - Group: SuperGroup
 - Tag: Name: TagA, Property: DigitalInput, Type: Integer, Value: 102, When: 2003/11/14 07:15:58

Right now, you may change the switch of I/O device i8077 on slot 4 to watch the value change with real-time message.