

ICE iPush[®] Communication Server Embedded

for WinCon-8000 System Overview

By: ICE Technology Corp., Sept 23, 2004

Ver.: 1.3.11

E-Mail \ service@icetechnology.com Tel \ +886-2-23961880 Fax \ +886-2-23961881

Copyright © 2004 ICE Technology Corporation. All Rights Reserved.

iPush Server is the registered trademark of ICE Technology Corporation.

Content

| | |
|---|----------|
| 1. IPUSH® EMBEDDED SYSTEM ARCHITECTURE | 3 |
| 2. SYSTEM COMPONENTS OVERVIEW | 4 |
| 2.1 INSIDE EMBEDDED CONTROLLER | 4 |
| 2.2 OUTSIDE EMBEDDED CONTROLLER | 4 |
| 3. APPLICATION DEVELOPMENT SUPPORT | 7 |

1. iPush[®] Embedded System Architecture

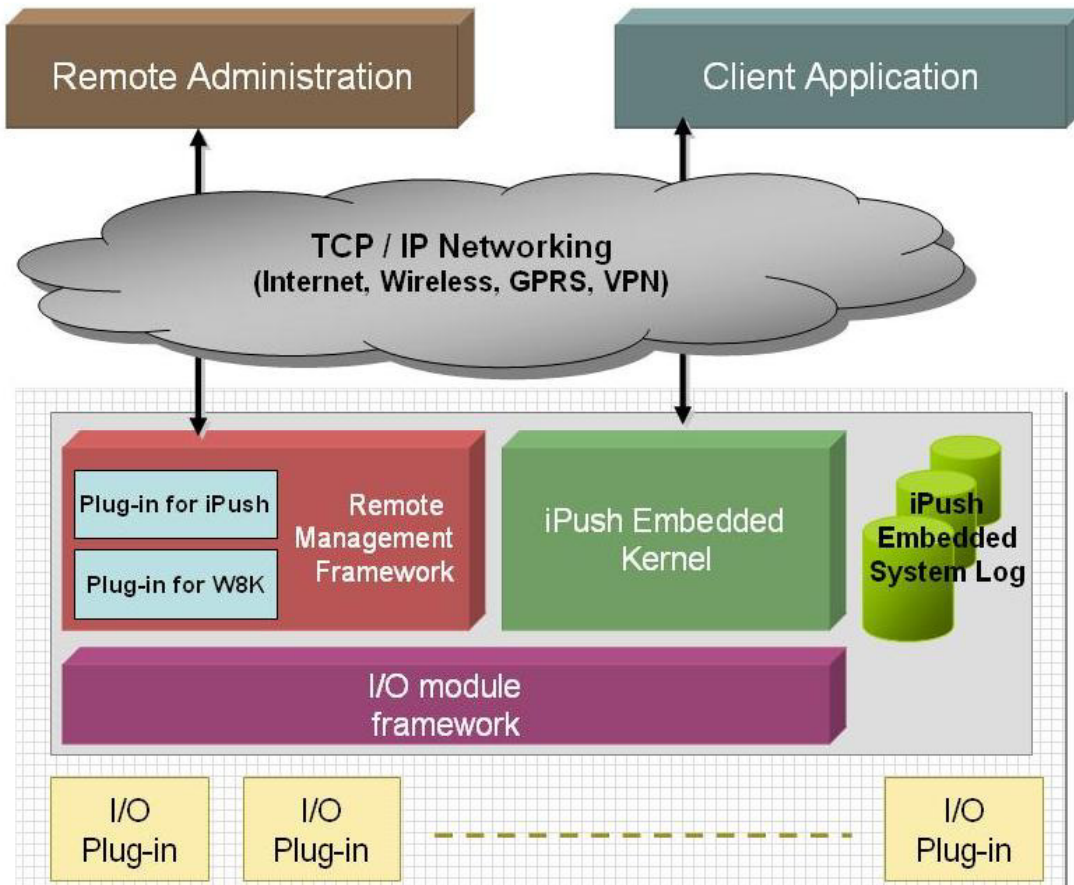


Figure 1. iPush[®] Embedded System for WinCon-8000 Architecture

2. System Components Overview

2.1 Inside Embedded Controller

iPush® Messaging Kernel

Real-time messaging engine for iPush® Embedded system. It also provides the up-link to iPush® Server and Remote Administration outside the Embedded Controller: WinCon-8000 here.

I/O Module Management

With the open iPush® Embedded I/O Mapping Framework, I/O module's capability of real-time messaging can be easily enabled in Plug-and-Play way. We provide the plug-ins for module below with standard shipment of WinCon-8000:

- ▷ i-8077
- ▷ i-8017H
- ▷ i-8024
- ▷ i-8040
- ▷ i-8041

Users or SI can implement plug-in of iPush® Embedded I/O Mapping Framework for specific I/O module by themselves.

Remote Management Module

With the open iPush® Embedded Remote Management Framework, the Remote Management Module acts as an agency for Remote Administration.

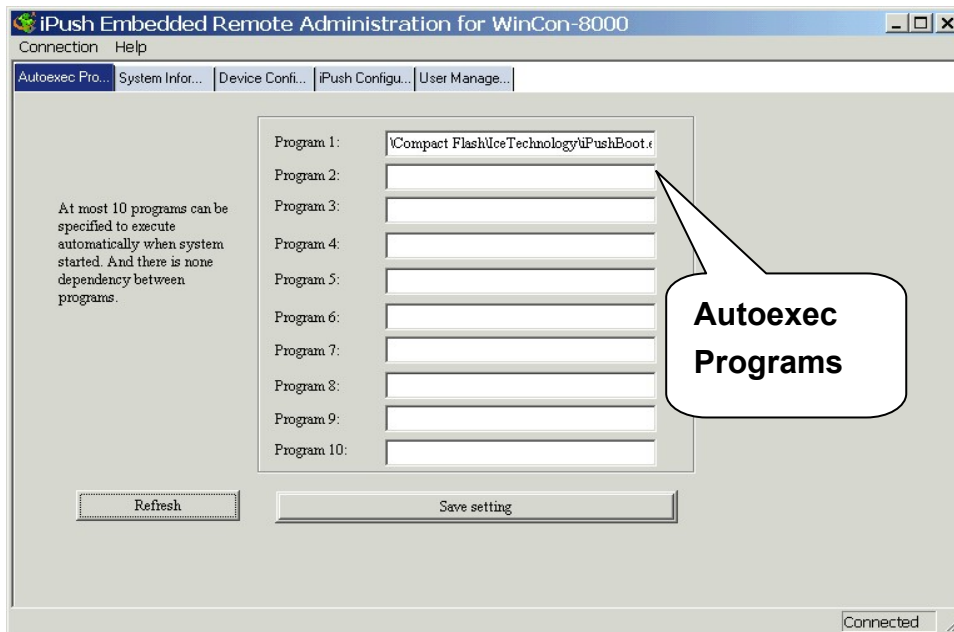
Remote Management Module should be communicated with Remote Administration through iPush® Messaging Kernel in real-time matter, but we do it with direct link between them right now.

2.2 Outside Embedded Controller

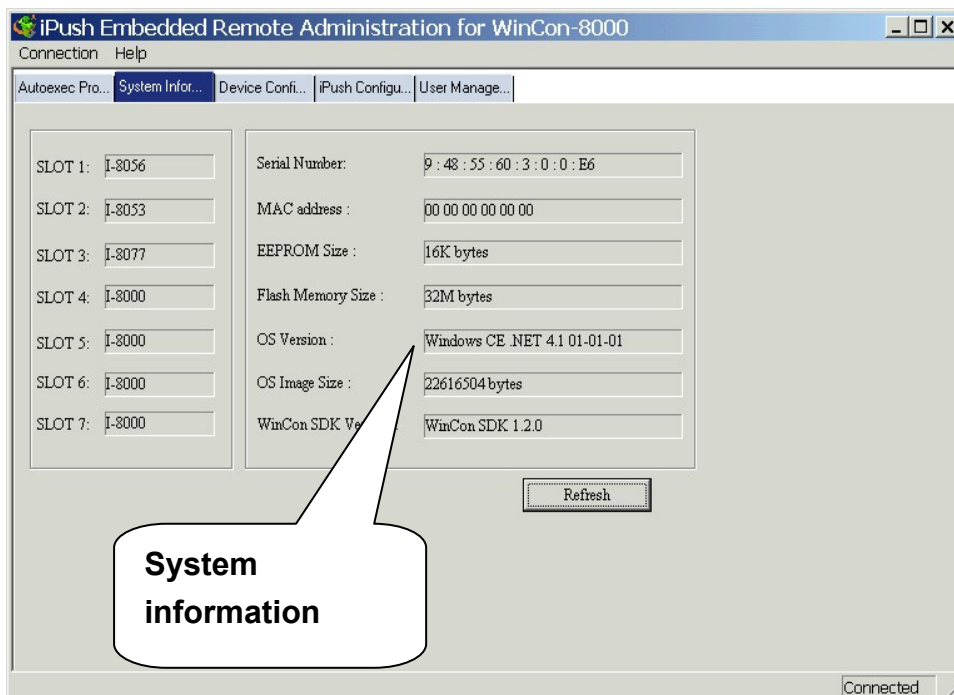
Remote Administration

Remote Administration can handle a single iPush® Embedded System inside Controller at one time. The items for Remote Administration to manage include:

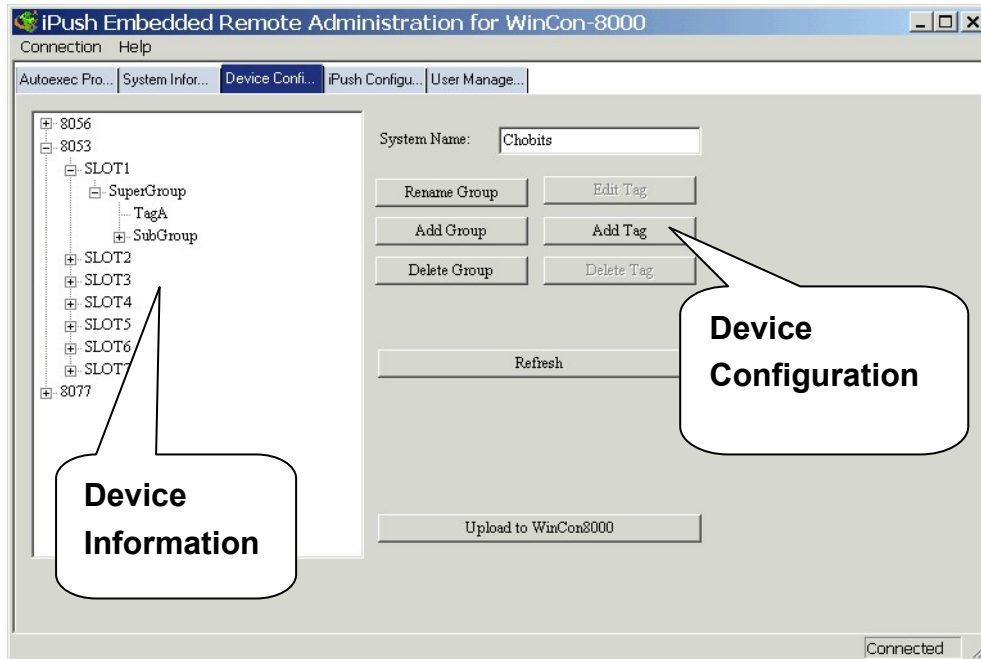
▷ Autoexec Programs



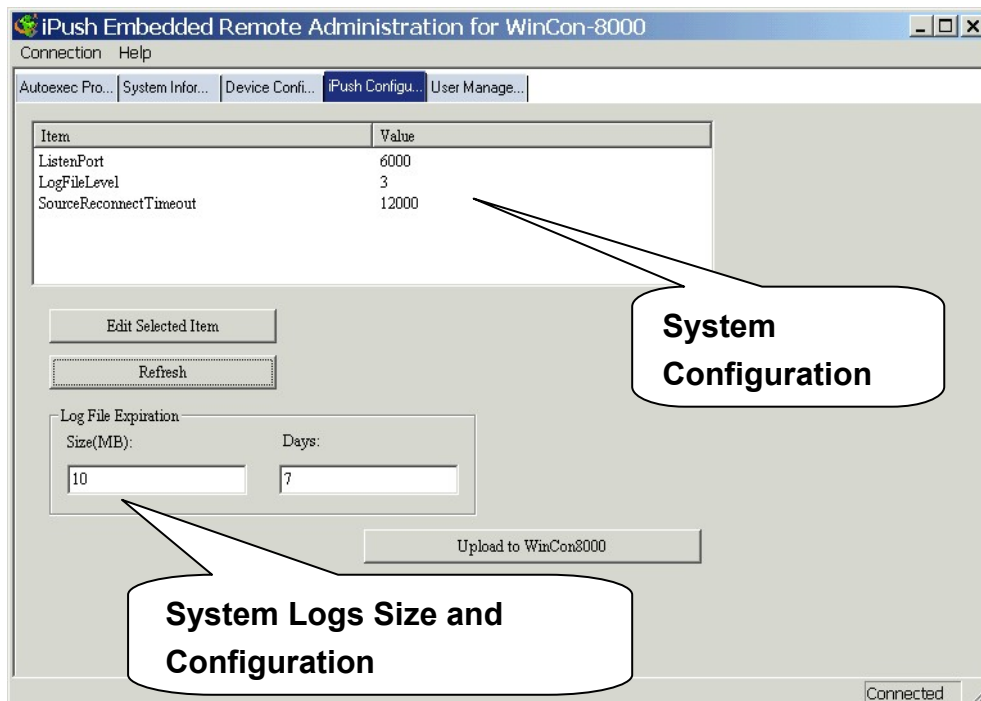
▷ System Information



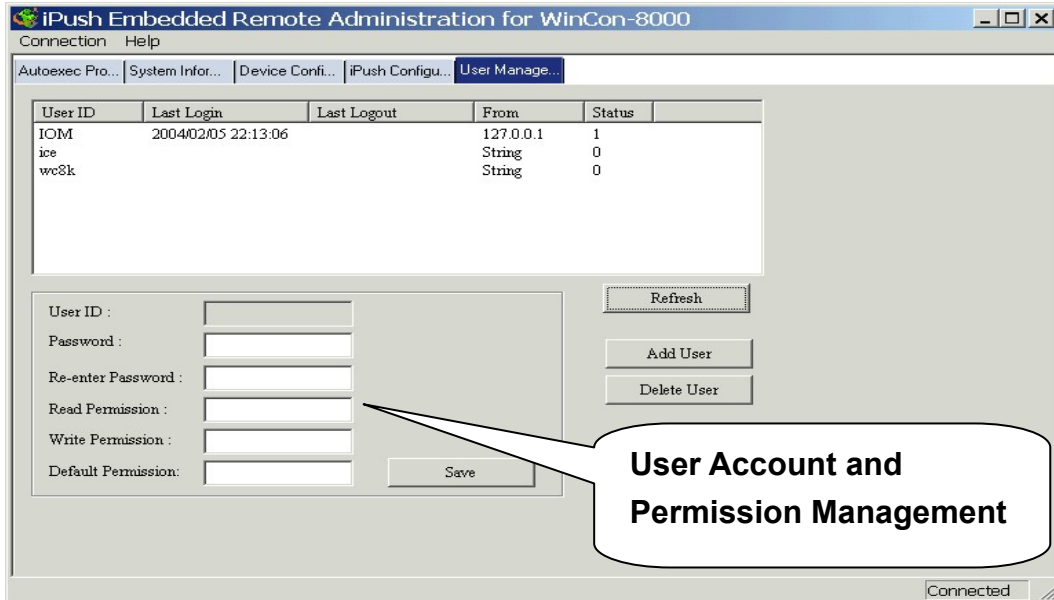
▷ Device Configuration



▷ iPush Configuration



▷ User Management



The screenshot displays the 'User Management' interface of the iPush Embedded Remote Administration for WinCon-8000. The window title is 'iPush Embedded Remote Administration for WinCon-8000'. The interface includes a menu bar with 'Connection' and 'Help', and a tabbed interface with 'Autoexec Pro...', 'System Infor...', 'Device Confi...', 'iPush Configu...', and 'User Manage...'. A table lists user information:

| User ID | Last Login | Last Logout | From | Status |
|---------|---------------------|-------------|-----------|--------|
| IOM | 2004/02/05 22:13:06 | | 127.0.0.1 | 1 |
| ice | | | String | 0 |
| wc8k | | | String | 0 |

Below the table, there is a form for adding or modifying users. The form includes fields for 'User ID', 'Password', 'Re-enter Password', 'Read Permission', 'Write Permission', and 'Default Permission'. There are also buttons for 'Refresh', 'Add User', 'Delete User', and 'Save'. A callout box points to the form with the text 'User Account and Permission Management'. The status bar at the bottom right shows 'Connected'.

3. Application Development Support

- ▷ Windows DLL for Windows ME/NT/2000/XP
- ▷ ActiveX Control for Windows ME/NT/2000/XP
- ▷ ActiveX Control for Windows CE.NET