

<b>Classification</b>	DCON Utility Pro FAQ				<b>No.</b>	DCON_01_001	
<b>Author</b>	Martin	<b>Version</b>	1.0.0	<b>Date</b>	2019/12/03	<b>Page</b>	1/2

## How to configure a large amount of the same modules with same configurations in INIT\* to GND state?

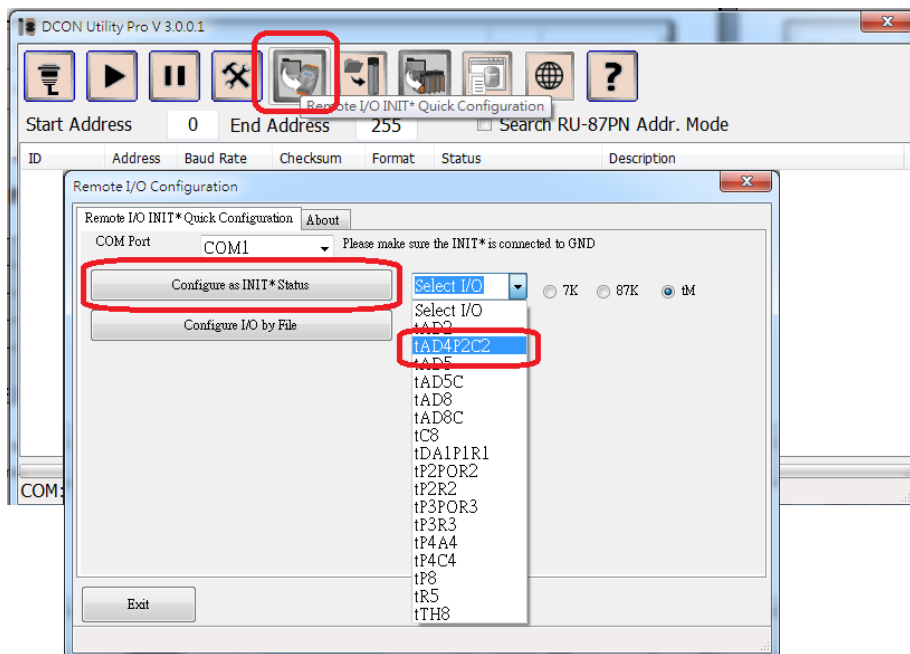
**Note: only I-7K/M-7K/I-87K/tM series support this function.**

If there is an application need to configure 250 pieces of tAD4P2C2 as below configurations.

4 Channel AI	4 ~20 mA
Net Address	1 ~ 250
Baud Rate	19200
Protocol	Modbus RTU

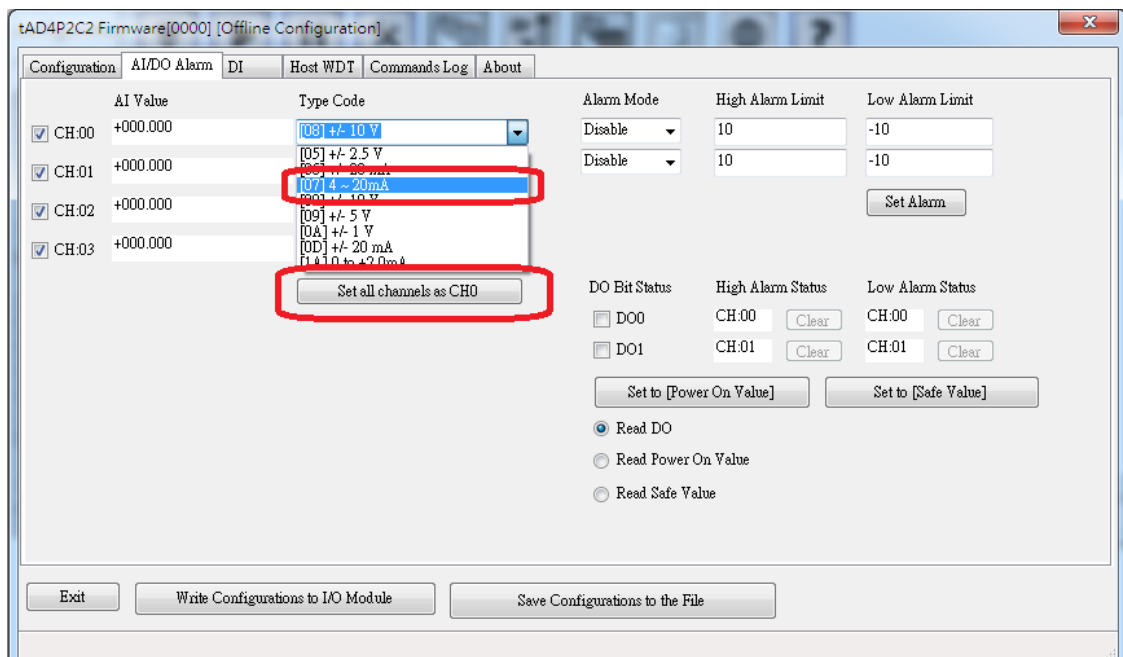
DCON Utility Pro provides a very quick and easy way to finish this job.

Step 1: Select the “Remote I/O INIT\* Quick Configuration” → “Configure as INIT\* Status” → Select tM option → then tAD4P2C2 module ID.



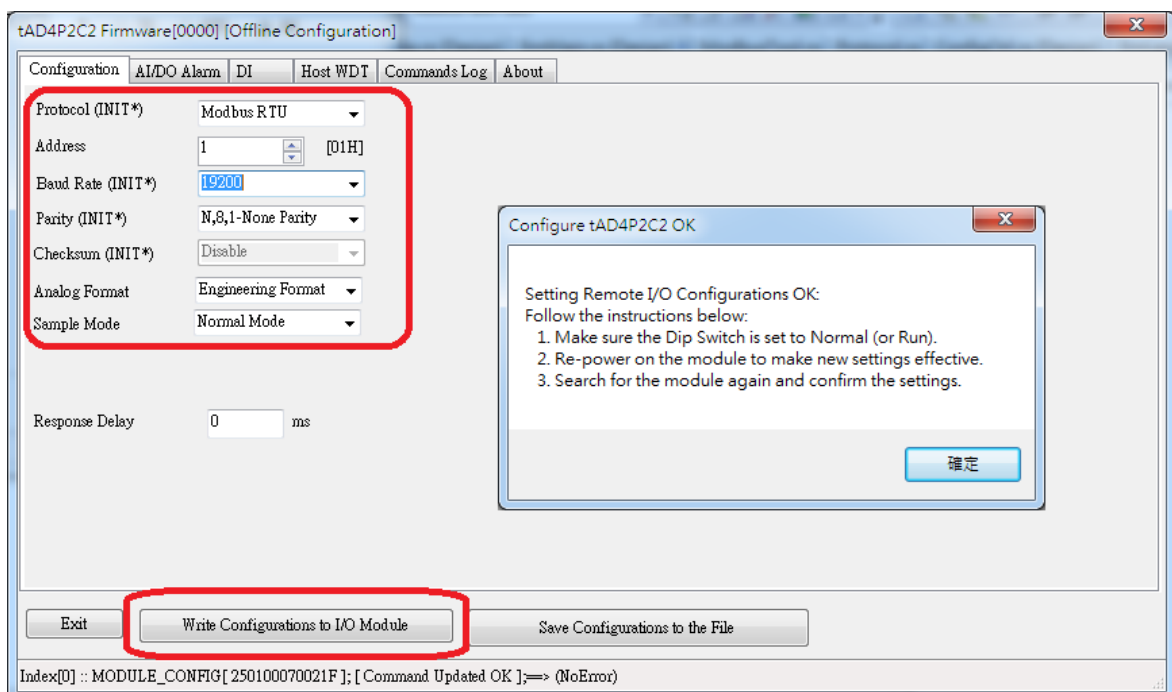
<b>Classification</b>	DCON Utility Pro FAQ				<b>No.</b>	DCON_01_001	
<b>Author</b>	Martin	<b>Version</b>	1.0.0	<b>Date</b>	2019/12/03	<b>Page</b>	2/2

Step 2: Select the AD 4~20mA type code for channel 0 then “Set all channels as CH0”



Step 3: Set the Protocol as Modbus RTU, Address 1, Baud Rate 19200

Then “Write Configurations to I/O Module”, if module is correctly connected in INIT\* to GND state, it can get successful message and finish the first one module.



Note 1: Make sure to **power on module in INIT\* to GND** state the USB driver is correctly installed if use USB to RS-485 converter.

Note 2: When change the I/O configurations, it operates in offline state, it does not send commands to module till click the “Write Configurations to I/O Module”.

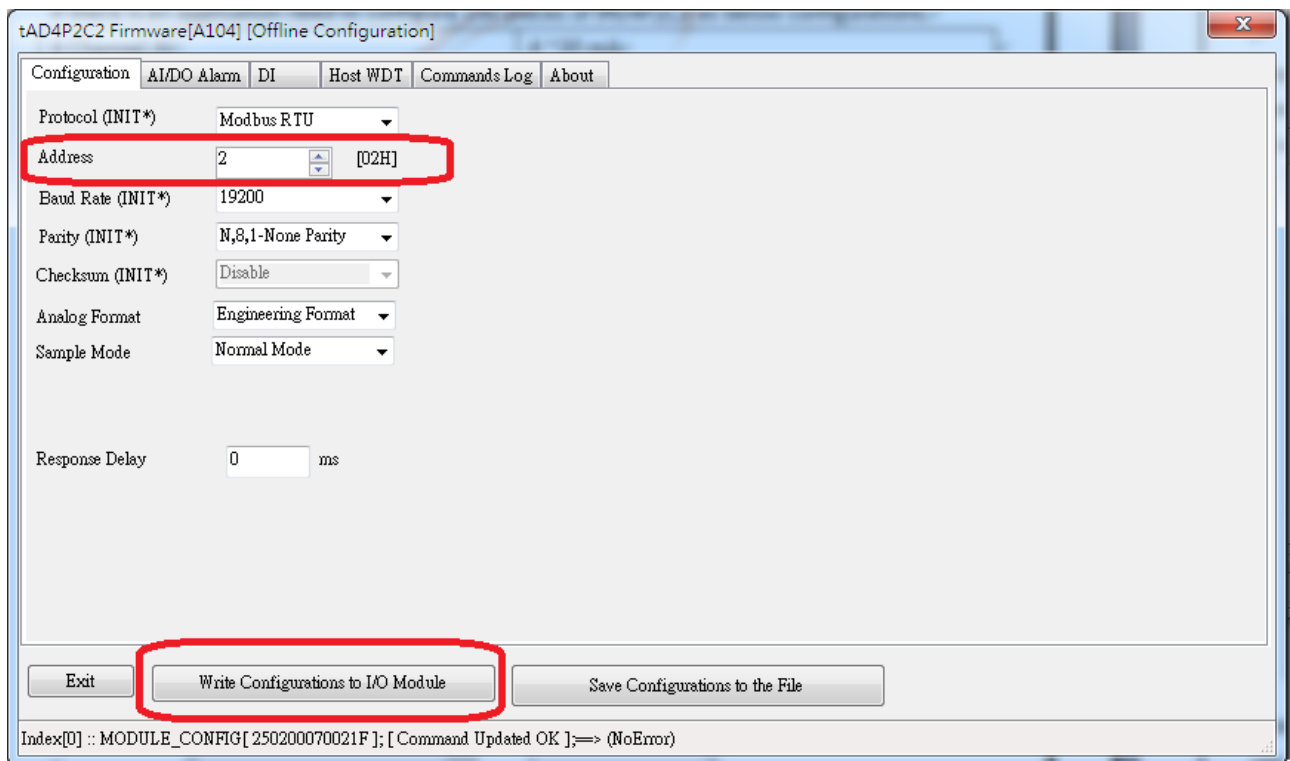
<b>Classification</b>	DCON Utility Pro FAQ				<b>No.</b>	DCON_01_001	
<b>Author</b>	Martin	<b>Version</b>	1.0.0	<b>Date</b>	2019/12/03	<b>Page</b>	3/2

Step 4: Turn off the power and remove the previous configured tAD4P2C2 and let the INIT\* in normal state.

Step 5: Connect the next tAD4P2C2 in INIT\* to GND state and turn on the power.

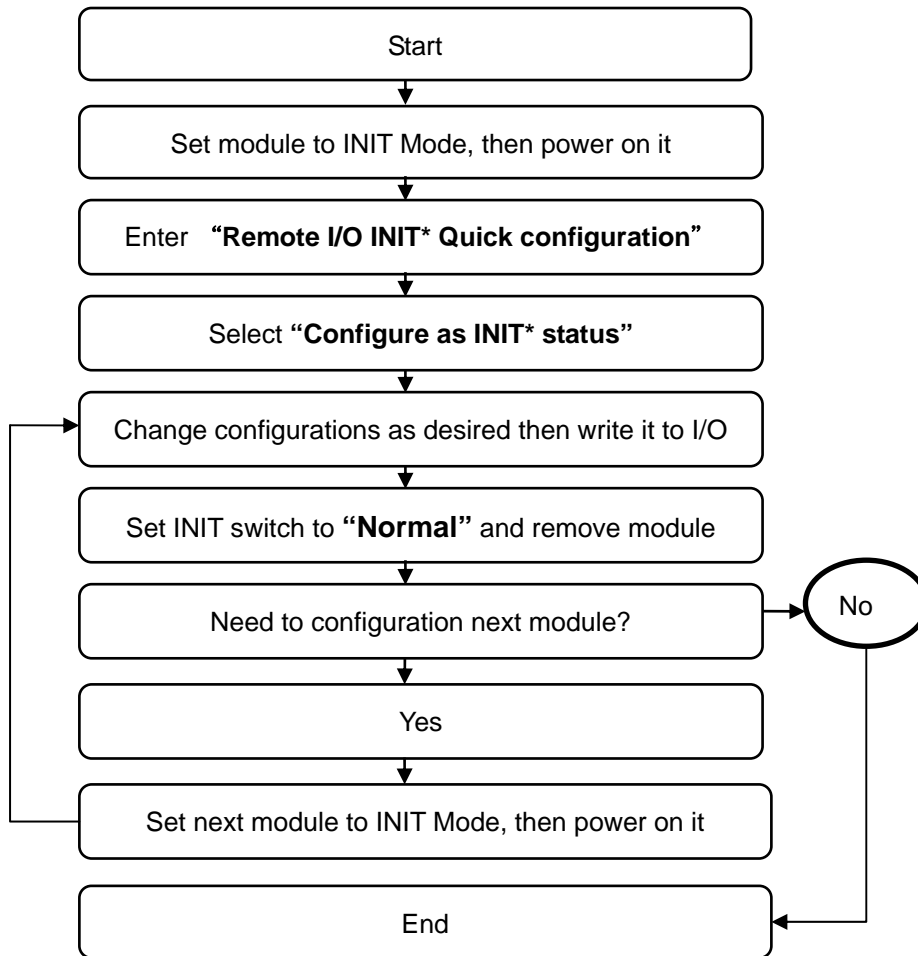
Step 6: Change the Address and “Write Configurations to I/O Module”.

Step 7: Repeat the Step 4 to Step 6.



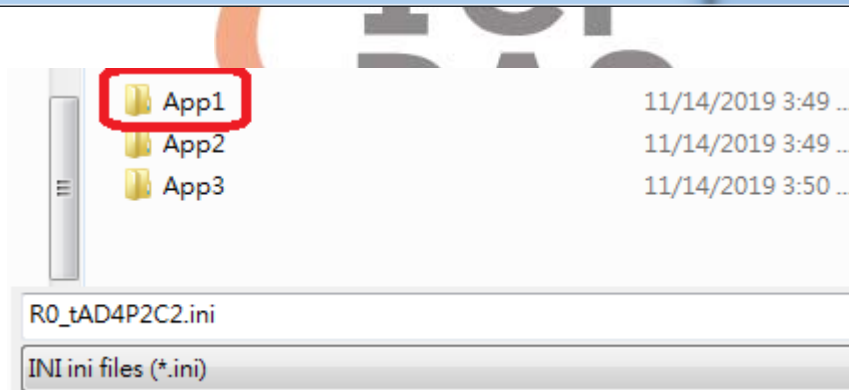
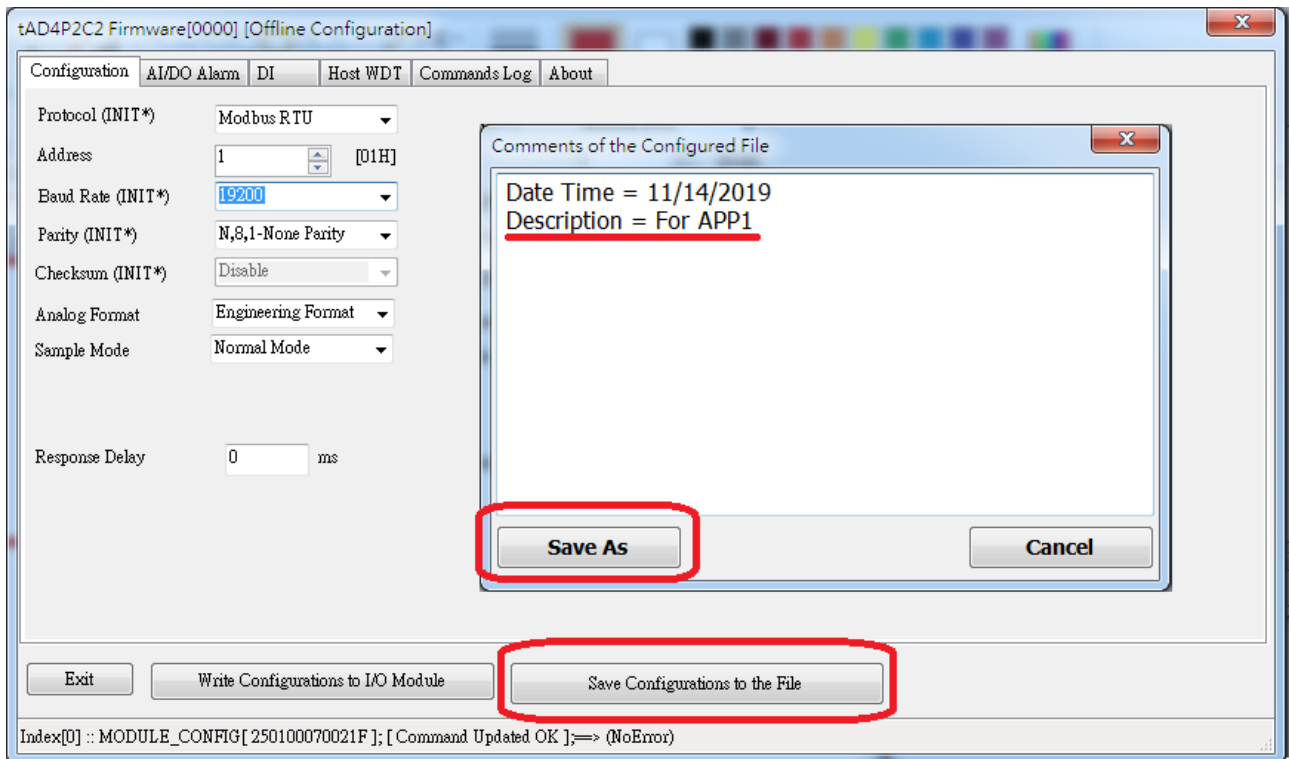
<b>Classification</b>	DCON Utility Pro FAQ				<b>No.</b>	DCON_01_001	
<b>Author</b>	Martin	<b>Version</b>	1.0.0	<b>Date</b>	2019/12/03	<b>Page</b>	4/2

Procedure of "Remote I/O INIT\* Quick Configuration"



<b>Classification</b>	DCON Utility Pro FAQ				<b>No.</b>	DCON_002	
<b>Author</b>	Martin/Anna	<b>Version</b>	1.0.0	<b>Date</b>	2019/08/13	<b>Page</b>	5/2

Step 8: After finish all modules, we can create the folder for each application and save the configurations to file.



Note 1: don't change the file name.

Note 2: this is an offline operation, to save the configuration file does not need to connect to module.

<b>Classification</b>	DCON Utility Pro FAQ				<b>No.</b>	DCON_002
<b>Author</b>	Martin/Anna	<b>Version</b>	1.0.0	<b>Date</b>	2019/08/13	<b>Page</b> 6/2

Step 9: It can load the previous configured file to review the module's setting and write to module.

