

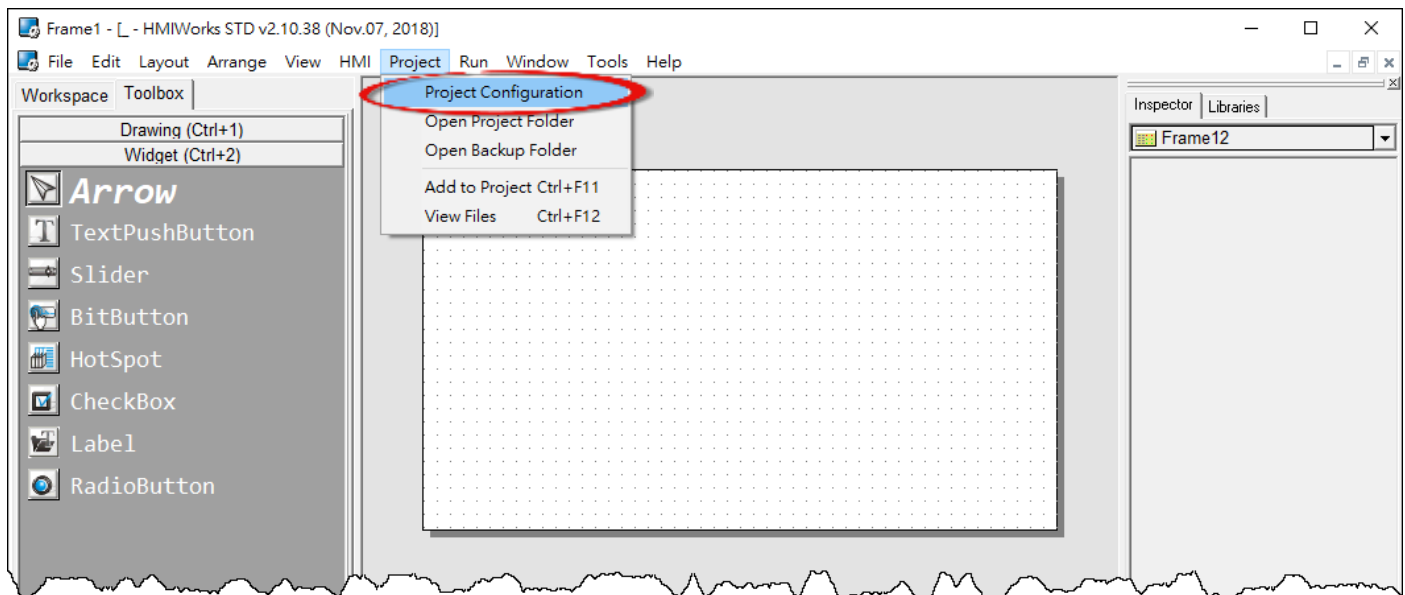
|                       |                                      |  |   |                                  |        |
|-----------------------|--------------------------------------|--|---|----------------------------------|--------|
| <b>Classification</b> | <input type="checkbox"/> tDS/tGW/tSH | <input type="checkbox"/> PETL/tET/tPET/ET-2200 | <input type="checkbox"/> DS/PDS/PPDS                  | <input type="checkbox"/> tM-752N |        |
|                       | <input type="checkbox"/> I/O Card    | <input type="checkbox"/> VXC Card              | <input checked="" type="checkbox"/> TouchPAD/HMIWorks | <input type="checkbox"/> VxComm  |        |
| <b>Author</b>         | Tammy                                | <b>Date</b>                                    | 2018-11-15  | <b>No.</b>                       | FAQ029 |

## Q: How to display multilingual text on TouchPAD by using the HMIWorks built-in fonts?

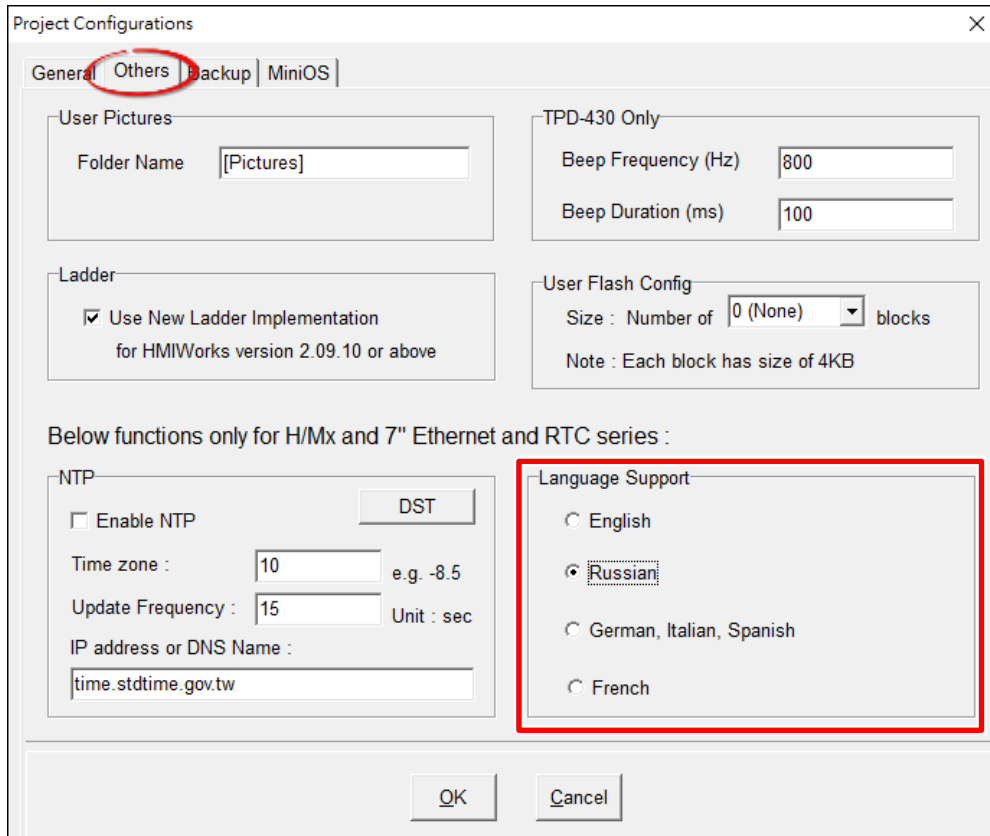
**A:** The HMIWorks has built-in multilingual support that includes **English, Russian, German/Italian/Spanish (European) and French**. The default is English, if you want to use language other than English, follow the below procedure to select an appropriate font.

**Note:** The multilingual support can be used with the **Text, TextPushButton, Slider, Checkbox, Label and RadioButton** components.

**Step 1:** Click the “Project” → “Project Configuration” item to open the “Project Configuration” dialog box.



**Step 2:** As shown below, we can select languages in the “Others” tab page of the “Project Configuration” dialog box. Here, the “Russian” is used as an example.



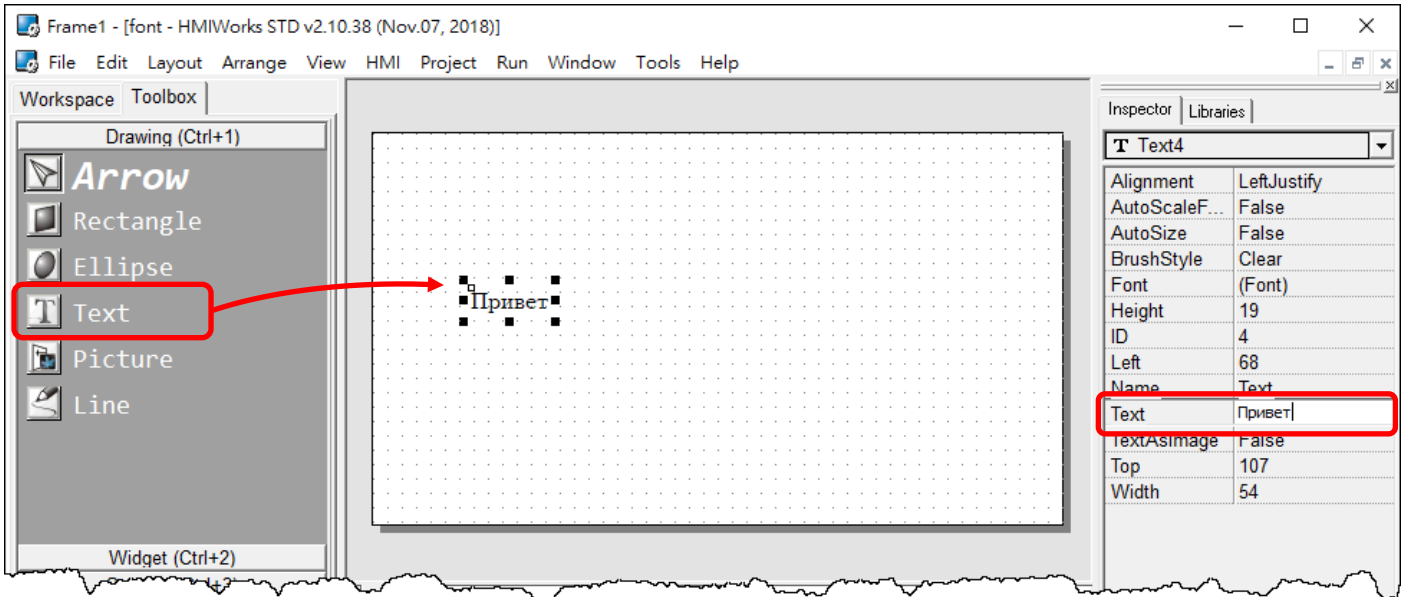
| Language                   | Supported Character Code                                 |
|----------------------------|--|
| English                    | (U+0020 - U+007E)  |
| Russian                    | English & (U+0410 - U+044F) & U+00B0                     |
| German \ Italian \ Spanish | English & (U+00A0 - U+00FF)                              |
| French                     | English & (U+00A0 - U+00FF) & (U+0152 - U+0153) & U+0178 |

**Notes:**

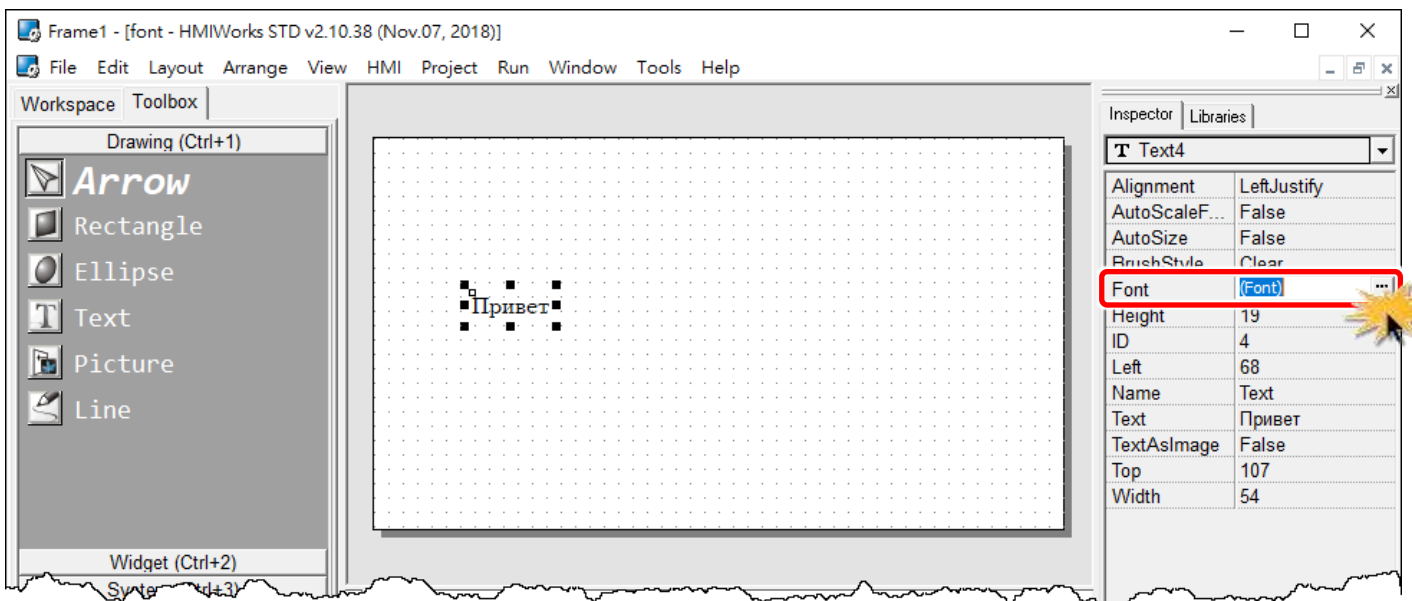
1. If the language we wanted is not listed in the above table, but the character code range of the alphabets of the language is covered by the listed language, we can select the listed language instead. For example, we can select “French” for a German application because the character code range of German is covered by French.
2. Still there are some languages not listed in the table, you can install the **ebFonts** to support more languages, refer to FAQ: How to install ebFonts to support multilingual feature.

**Step 3:** Click the "Text" object in the "Drawing" section of the "Toolbox" pane, and then click the desired position on the design frame to place the text.

**Step 4:** In the "Inspector" pane, enter strings 「Привет」 in the "Text" field.

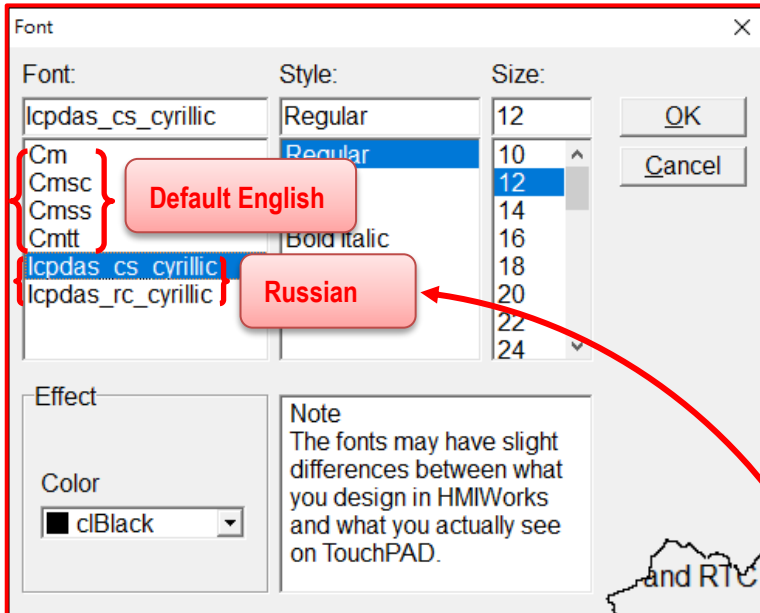


**Step 5:** In the "Inspector" pane, click the "Font" button for the "Font" field to open the custom font dialog.



**Step 6:** Based on the language you select in the “Project Configuration” dialog, the custom font dialog displays corresponding fonts of the language. (e.g., Icpdas\_cs\_cyrillic and Icpdas\_rc\_cyrillic)

 **Note:** There are limited fonts that can be selected in the custom font dialog box.



Custom Font Dialog



| Font                                      | Supported Language                              |
|---|---|
| Cm, Cmssc, Cmss, Cmtt                     | English   |
| Icpdas_cs_cyrillic,<br>Icpdas_rc_cyrillic | English, Russian                                |
| Icpdas_cs_latin1s,<br>Icpdas_rc_latin1s   | English, German, Italian, Spanish, etc.         |
| Icpdas_cs_french,<br>Icpdas_rc_french     | English, German, Italian, Spanish, French, etc. |