

---

# eSearch Utility

---

Linux User Manual

## **Warranty**

All products manufactured by ICP DAS are warranted against defective materials for a period of one year from the date of delivery to the original purchaser.

## **Warning**

ICP DAS assume no liability for damages consequent to the use of this product. ICP DAS reserves the right to change this manual at any time without notice. The information furnished by ICP DAS is believed to be accurate and reliable. However, no responsibility is assumed by ICP DAS for its use, nor for any infringements of patents or other rights of third parties resulting from its use.

## **Copyright**

Copyright 2010 by ICP DAS. All rights are reserved.

## **Trademark**

The names used for identification only may be registered trademarks of their respective companies.

---

## Tables of Contents

<b>1. Executing eSearch Utility with “wine” software on linux .....</b>	<b>3</b>
1.1 Installing “Wine” software package for linux system .....	3
1.2 Executing eSearch Utility on linux .....	4

---

## 1. Executing eSearch Utility with “wine” software on linux

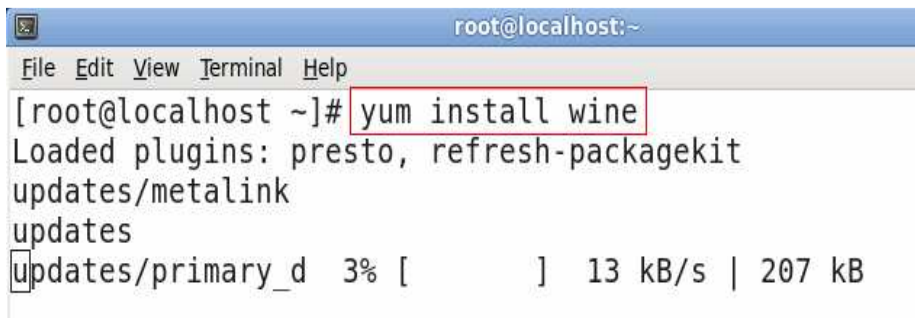
The “wine” can be used to execute Windows software on linux. For eSearch utility, the recommended steps are given in Sec 1.1 ~ 1.2

### 1.1 Installing “Wine” software package for User’s linux system

(1) Red Hat Linux system(please refer to figure 1-1)

- Type below command to install “wine” software automatically

**#yum install wine**



```
root@localhost:~  
File Edit View Terminal Help  
[root@localhost ~]# yum install wine  
Loaded plugins: presto, refresh-packagekit  
updates/metalink  
updates  
updates/primary_d 3% [ ] 13 kB/s | 207 kB
```

Figure 1-1

(2) Other Linux system

- Download “wine” source code

Please refer to the “wine” website <http://www.winehq.org/>

- Compile and install “wine” source code

```
#tar xvf wine-X.X.X.tar.bz2  
#cd wine  
#./configure  
#make  
#make install
```

## 1.2 Executing eSearch Utility on linux

- Type below command to execute “eSearch.exe”(please refer to figure 1-2).

```
#tar xvf eSearch_UTILITY.tgz
```

```
#cd eSearch_UTILITY
```

```
#wine eSearch.exe
```

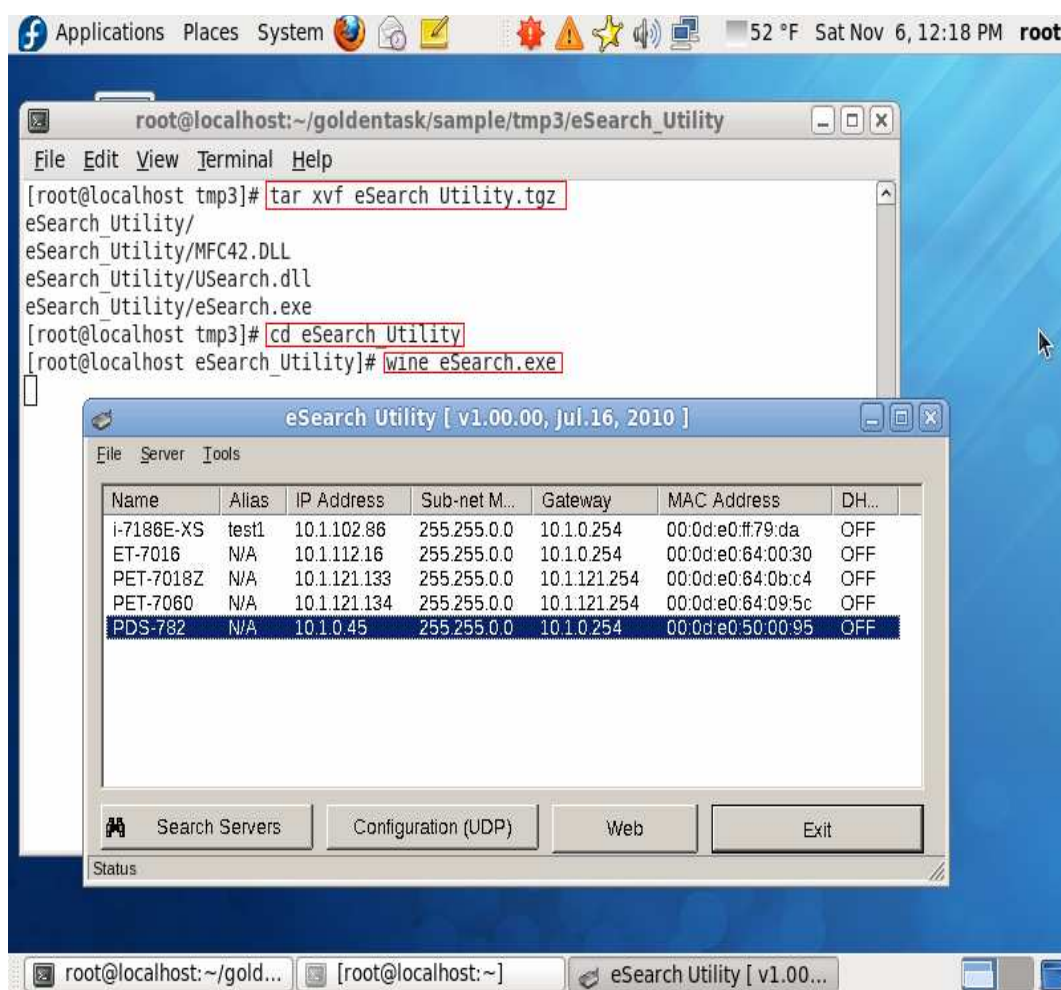


Figure 1-2