







# IMS-130 IEEE 1394b Camera Series QuickStart

Ver. 1.1

Thank you for purchasing Sparrow IEEE 1394b camera series. This QuickStart includes some important information such as how to use this camera correctly and safely. Please read through this installation guide carefully. For detail camera operation please refer Sparrow IMS-130 User's manual. You can get the completed User's manual after driver CD install completed, or you can download pdf file from our website at [www.icpdas.com](http://www.icpdas.com).

## Standard Package Contents

Camera with Lens-cap	Driver CD	8-pin GPIO Wiring Connector
		
Tripod Adapter with screws		
		

## Camera Interface

### ● 8-pin GPIO



No.	Define
1	Opto-Isolated Trigger Input
2	Opto-isolated Output
3	TTL GPIO2
4	TTL GPIO3
5	Opto GND
6	TTL GND
7	VEXT
8	+3.3V



### ● IEEE 1394b

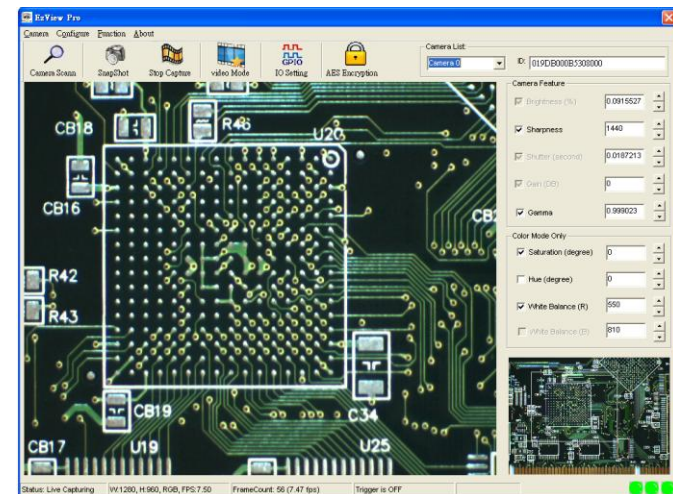
No.	Define
1	TPB-
2	TPB+
3	TPA-
4	TPA+
5	TPA(R)
6	Power GND
7	Status Contact
8	Power
9	TPB(R)

## BEFORE USE – GERNAL SAFETY INSTRUCTIONS

<b>CAUTION</b>	
	<b>DO NOT open the camera housing.</b> Touching internal components may damage camera function. Meanwhile when customer to open camera housing then warranty will be void immediately.
	Be careful not to allow liquids, flammable or metallic material inside of the camera.

## Driver Installation

1. Do not plug any Sparrow IMS-130 cameras to your system before driver install completed.
2. Put the Sparrow driver CD to your system CD-ROM driver for installation.
3. Please just press "Next" button then driver will install automatically and when install completed please refer **Chapter 3 Installation Guide of Sparrow User's Manual** for detail hardware and software installation information.
4. When install completed then you will find Sparrow 1394 Camera Device in your system Device Manager.
5. Also you can run EZView Pro utility for image acquisition test.





感謝您購買 Sparrow IEEE 1394b 工業級攝影機。此份簡易安裝說明包含了一些重要的訊息以及如何正確且安全的使用本攝影機產品。請您在使用前先讀過此說明。關於攝影機之詳細操作說明請參閱本產品之使用說明書。本產品之完整使用說明書您可以透過安裝驅動程式光碟片之後取得完整的 pdf 檔，亦或者您也可以至本公司的網址 [www.icpdas.com](http://www.icpdas.com) 即可下載完整的使用者手冊 pdf 檔。

### 本產品標準包裝內含

攝影機及防塵蓋	驅動程式光碟片	GPIO 8-pin 作線接頭
		
	三角架固定片及螺絲	
		

### 攝影機接頭介面

#### ● 8-pin GPIO



接點	說明
1	Opto-Isolated Trigger Input
2	Opto-isolated Output
3	TTL GPIO2
4	TTL GPIO3
5	Opto GND
6	TTL GND
7	V <sub>EXT</sub>
8	+3.3V



#### ● IEEE 1394b

接點	說明
1	TPB-
2	TPB+
3	TPA-
4	TPA+
5	TPA(R)
6	Power GND
7	Status Contact
8	Power
9	TPB(R)

### 使用前之安全性說明

警告	
	千萬不可自行打開攝影機之外殼。碰觸攝影機任何內部零件可能會傷害到攝影機功能，同時若您自行打開攝影機外殼時此產品之保固將立即失效
	請小心勿讓任何液體，可燃物或金屬物體侵入本產品。

### 安裝驅動程式

1. 在驅動程式安裝好之前請勿將 Sparrow IMS-130 攝影機連接至您的系統。
2. 請先將驅動程式光碟片放入您的系統光碟機中
3. 起始畫面您只要按“Next”按鍵，同時安裝過程中您只需要按“Install”按鍵驅動程式便會自動安裝，當驅動安裝完畢後請參閱 Sparrow 的使用手冊第三章安裝說明，裡面有詳細的硬體及軟體安裝步驟說明。
4. 當您依照 Sparrow 的使用手冊第三章 安裝說明，安裝完成後您可以在您系統管理員裡面看到 ICP DAS IMS-130。
5. 同時您也可以開始使用 EZView Pro 工具程式作取像測試確認是否正常。

