

Classification	NAPOPC_ST FAQ				No.	1-010-E	
Author	James	Version	1.0.0	Date	2010/7/12	Page	1/4

## How to use ZigBee modules in NAPOPC\_ST?

*Applies to:*

<i>Platform</i>	<i>OS version</i>	<i>NAPOPC version</i>
<i>PC</i>	<i>XP</i>	<i>NAPOPC_ST v3.20</i>

**Assume that we now have a group of Zigbee modules:**

**ZB-2550 (Host Converter)**

**ZB-2052 (DI)**

**ZB-2060 (DIO)**

If we can connect NAPOPC\_ST to ZB-2550, then we can exchange data with ZB-2052/ZB-2060 further.

**We have two ways to establish communication:**

Search (Automatic) / Add device (Manual)

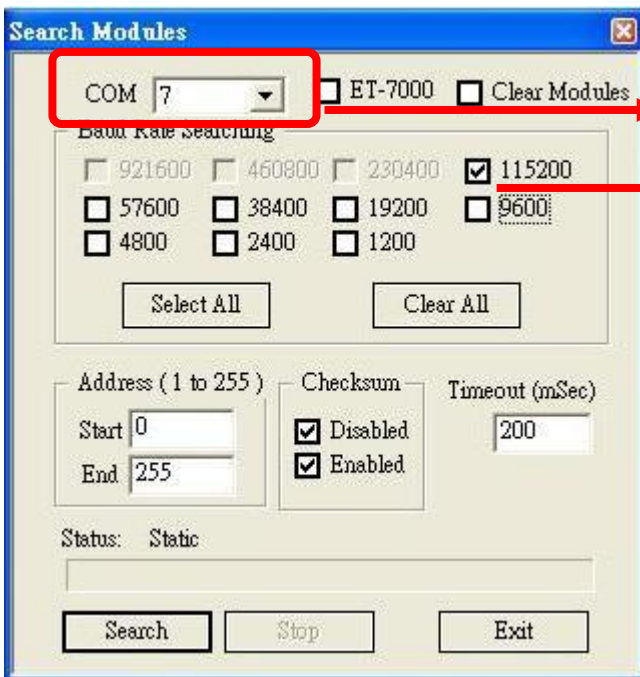
**Search (Automatic)**

**Step 1**



Click "**Search**" on the Toolbar to scan modules connected with your PC. It will show you the dialog as below. After setting up, just click "search".

Classification	NAPOPC_ST FAQ				No.	1-010-E	
Author	James	Version	1.0.0	Date	2010/7/12	Page	2/4

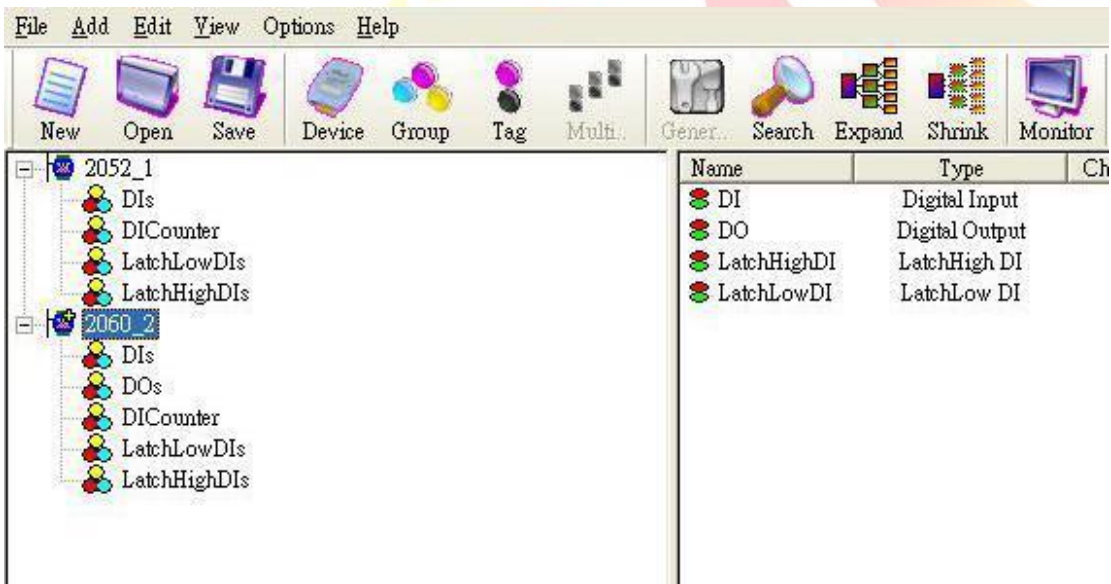


**COM port connected with ZB-2550**

**Baud rate between PC and ZB-2550**

## Step 2

After searching, NAPOPC is able to communicate with ZB-2052 and ZB-2060.



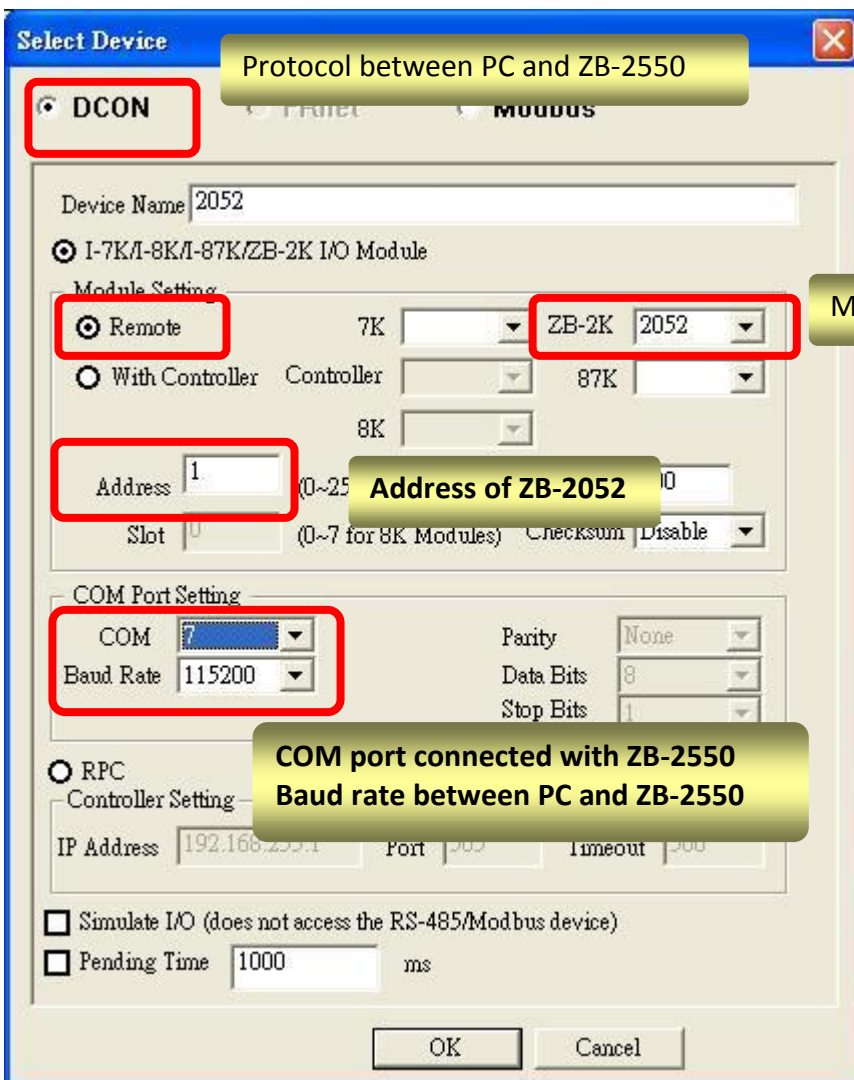
Classification	NAPOPC_ST FAQ				No.	1-010-E	
Author	James	Version	1.0.0	Date	2010/7/12	Page	3/4

### Add device (Manual) (DCON)

#### Step 1



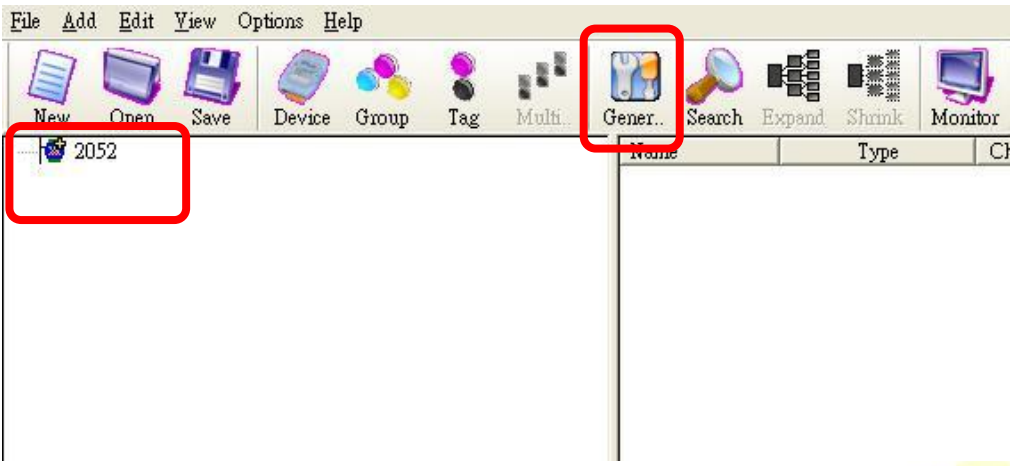
Click "Device" on the Toolbar, it will show you the dialog as below. Check the options which are marked, then click "OK" to add device.



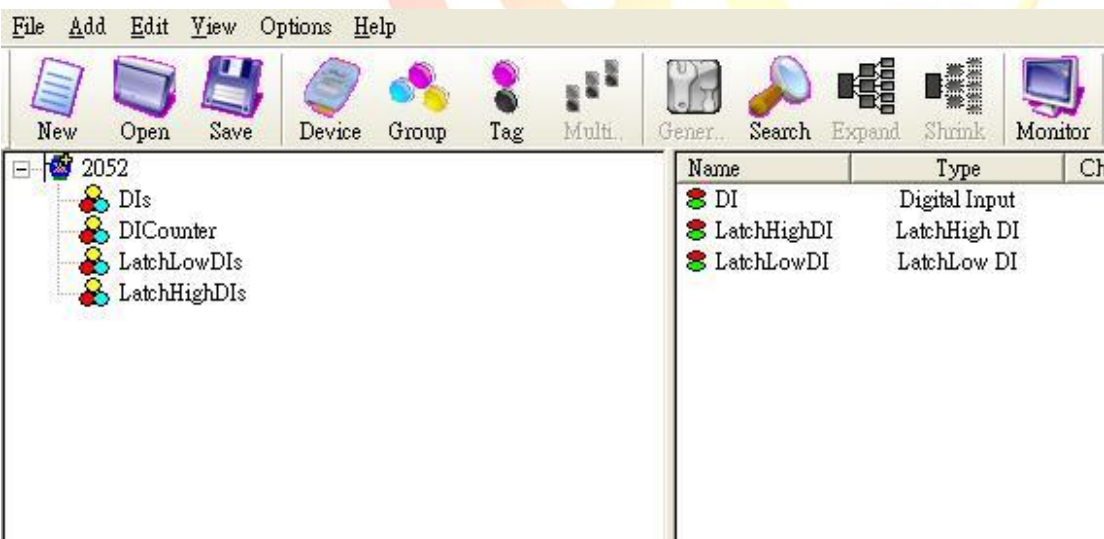
Classification	NAPOPC_ST FAQ				No.	1-010-E	
Author	James	Version	1.0.0	Date	2010/7/12	Page	4/4

**Step 2**

ZB-2052 is added :



Click "Generate Tag" on the Toolbar, it will add all tags for you according to ZB-2052 specification.



**Step 3**

Use the same procedure to establish ZB-2060. And then NAPOPC\_ST will be able to communicate with ZB-2052 and ZB-2060.