

Classification	NAPOPC_ST FAQ				No.	1-008-E	
Author	James	Version	1.0.0	Date	2010/7/12	Page	1/6

How to use ET-7000 modules in NAPOPC_ST?

Applies to:

Platform	OS version	NAPOPC version
PC	XP	NAPOPC_ST v3.20

There are two ways to communicate with ET-7000:

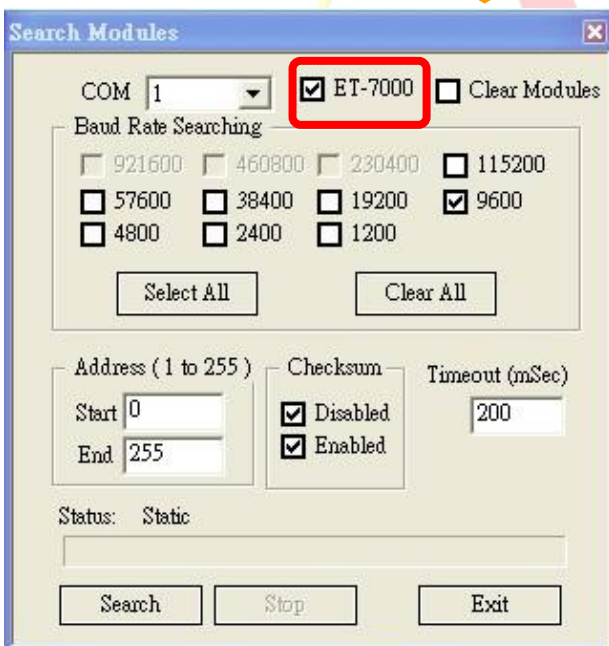
Search (Automatic) / Add Device (Manual)

We use ET-7060 as an example:

Search (Automatic)

Step 1

Click "Search" on the Toolbar, it will show you a dialog as below:



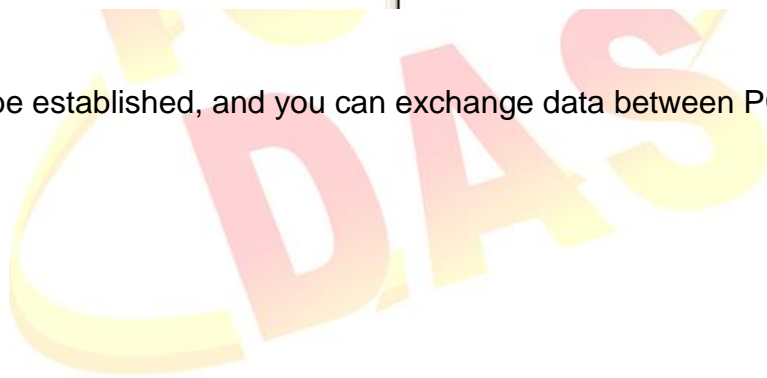
Just check "ET-7000" box, then press "Search" button to search.

Classification	NAPOPC_ST FAQ				No.	1-008-E	
Author	James	Version	1.0.0	Date	2010/7/12	Page	2/6



Name	Type	Ch
Ch00	Coil Output	
Ch01	Coil Output	
Ch02	Coil Output	
Ch03	Coil Output	
Ch04	Coil Output	
Ch05	Coil Output	

Communication will be established, and you can exchange data between PC and ET-7060.

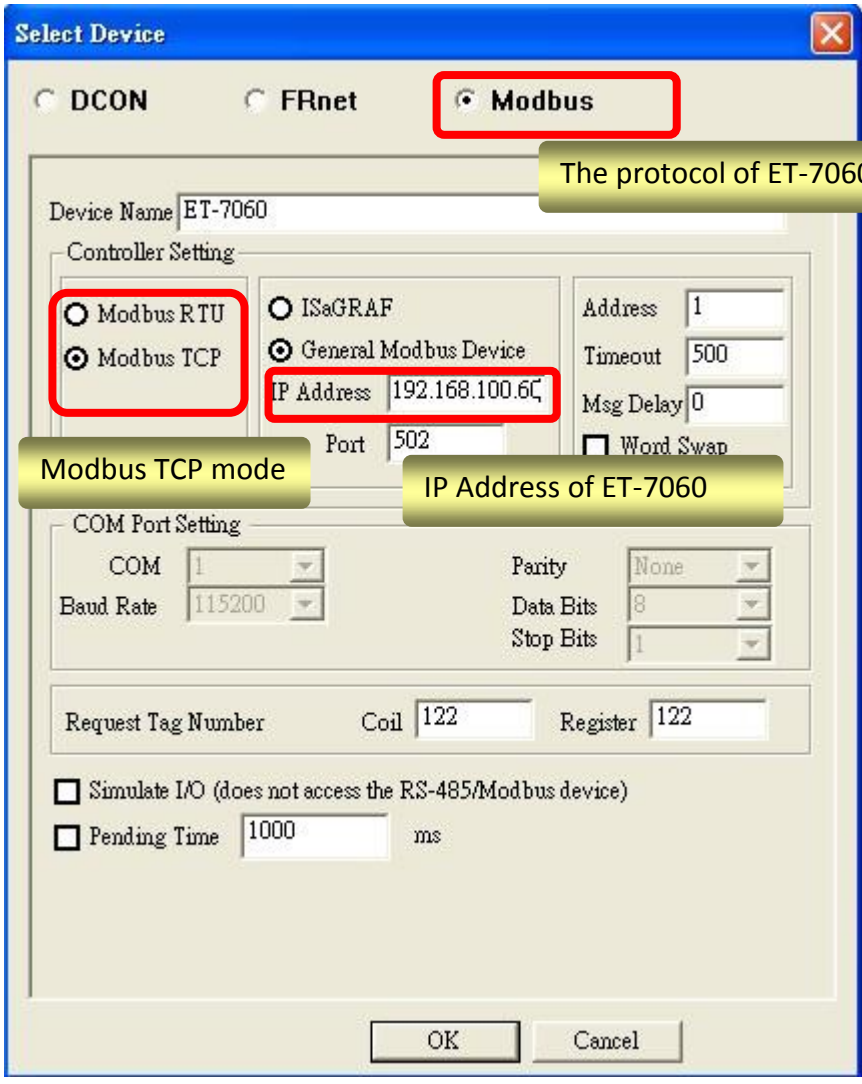


Classification	NAPOPC_ST FAQ				No.	1-008-E	
Author	James	Version	1.0.0	Date	2010/7/12	Page	3/6

Add Device (Manual)

Step 1

Click "Device" on the Toolbar, it will show you the dialog as below.



The protocol of ET-7060 is Modbus. Choose it first.

Modbus TCP mode

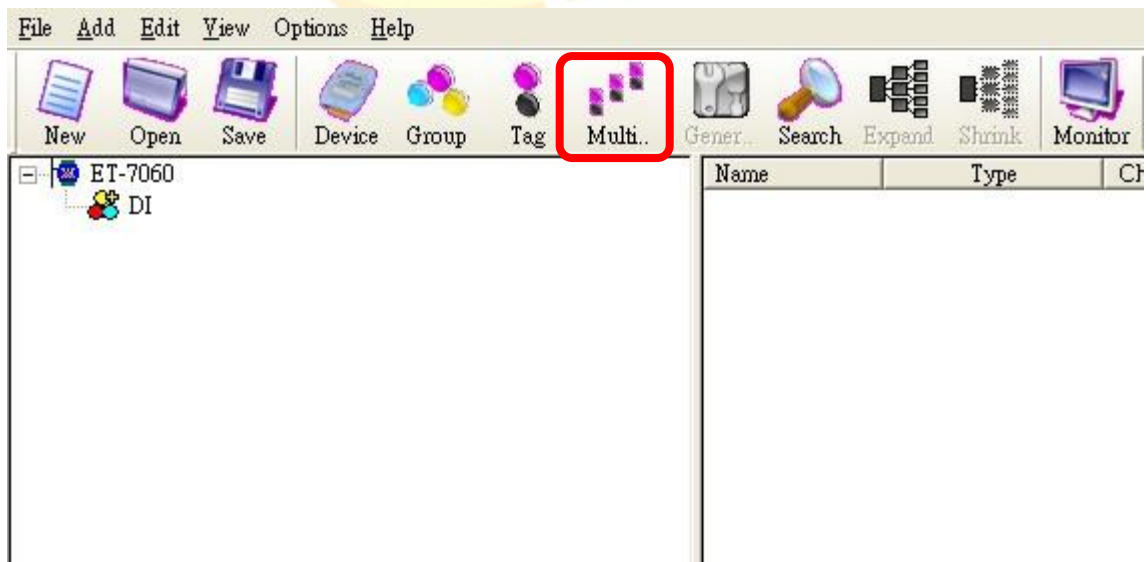
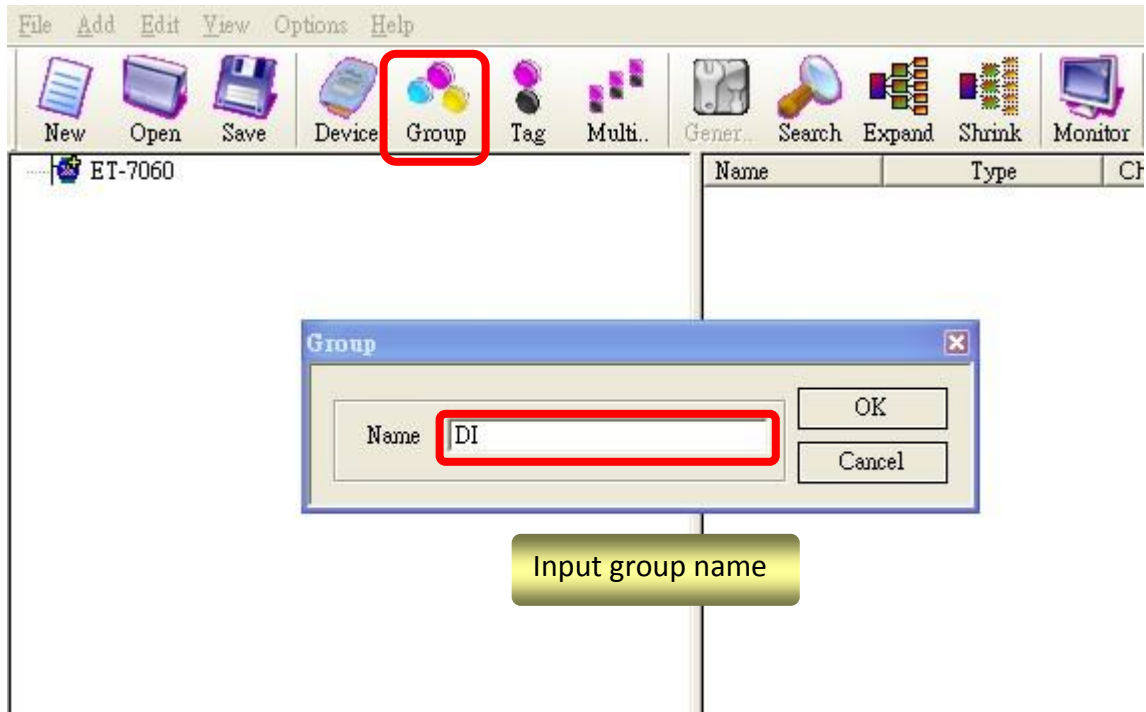
IP Address of ET-7060

Check the options which are marked, then click "OK" to add device.

Classification	NAPOPC_ST FAQ				No.	1-008-E	
Author	James	Version	1.0.0	Date	2010/7/12	Page	4/6

Step 2

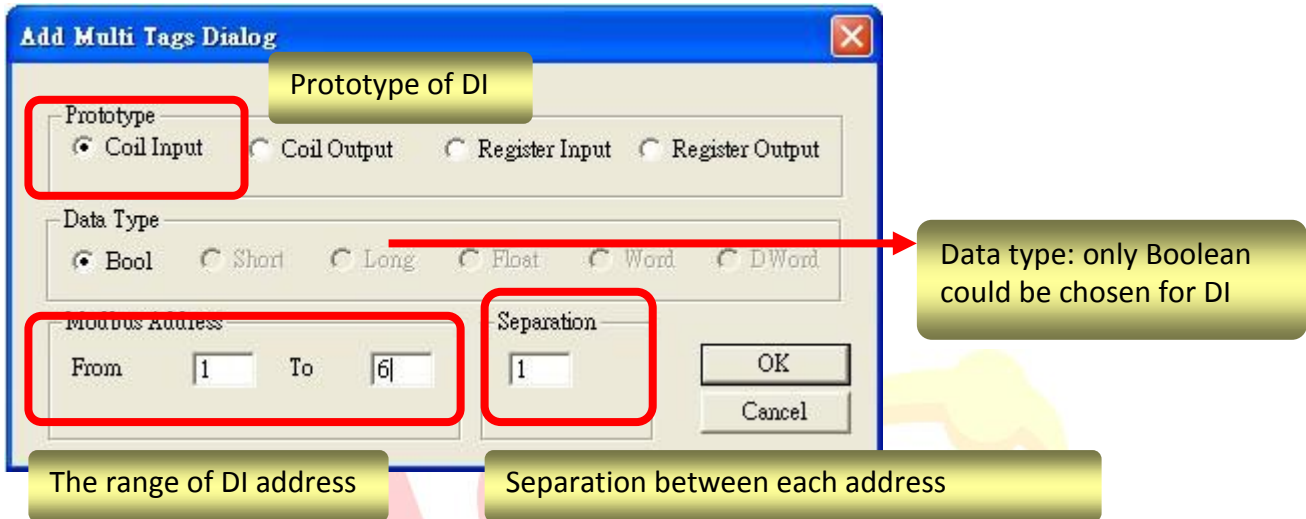
After adding ET-7060, click "Group" on the Toolbar to add group for ET-7060. Input group name in the "Group" dialog. (For example, group name is "DI".)



Classification	NAPOPC_ST FAQ				No.	1-008-E	
Author	James	Version	1.0.0	Date	2010/7/12	Page	5/6

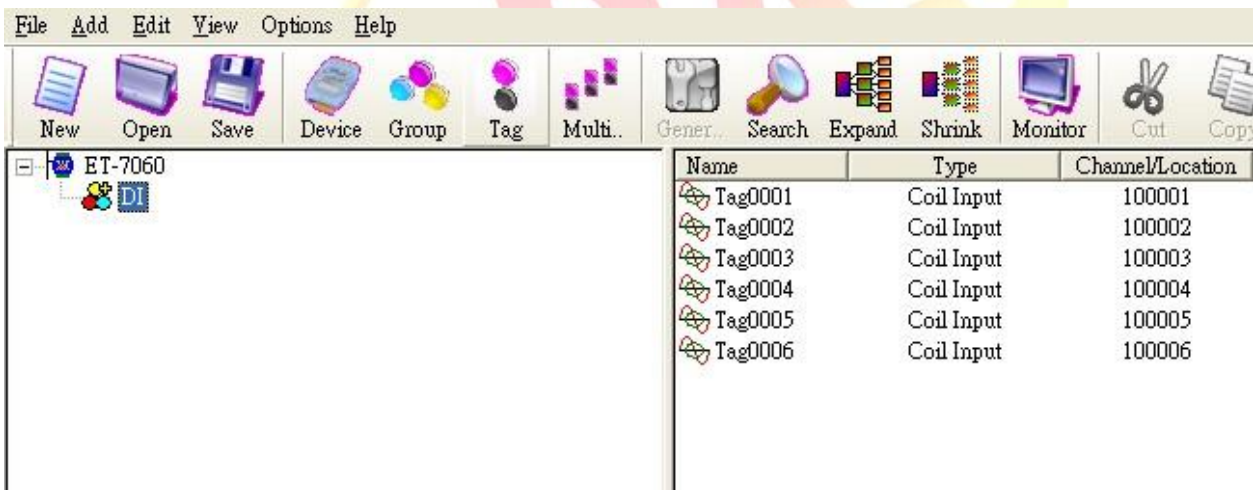
Step 3

Now ET-7060 has “DI” group, you should add tags inside “DI” group. Click “Multi tags” on the Toolbar.



Click “OK” to add tags after checking these options.

Step 4



You could communicate with DI of ET-7060 now.

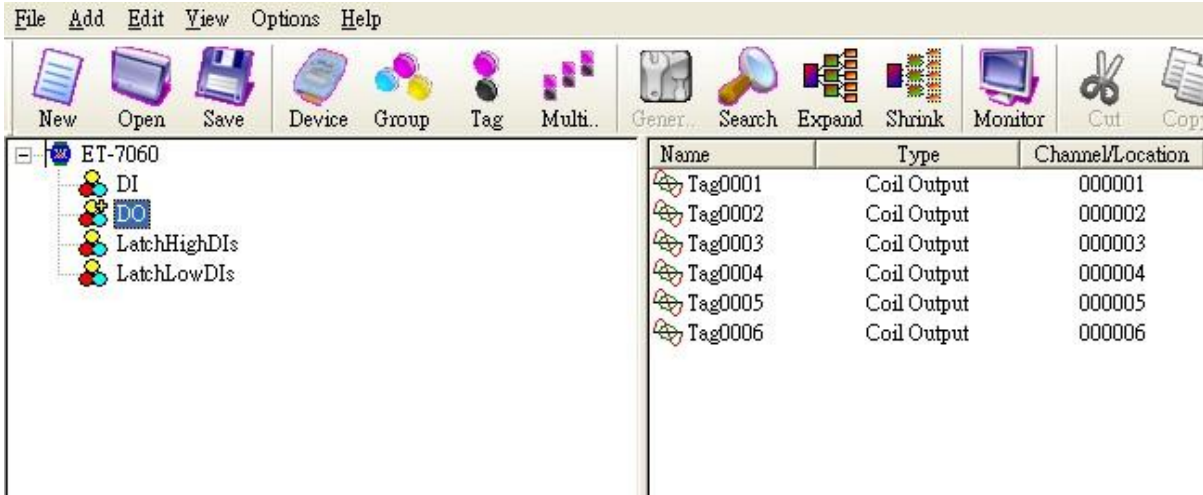
Classification	NAPOPC_ST FAQ				No.	1-008-E	
Author	James	Version	1.0.0	Date	2010/7/12	Page	6/6

You could also add other tags as the same way just notice the difference of [address](#) and [Prototype](#).

DO: 1~6 (Coil Output)

LatchHighDIs: 33~38

LatchLowDIs: 65~70



Finally, you could accomplish the entire communication between NAPOPC_ST and ET-7060.

⚠ Caution:

In the whole procedure you will have several actions about “add” something, such as “Group” or “Tag”. Before adding something for a certain part, [you have to click the part first, and then you could add what you want.](#)

For example:

If you intend to add tags for “DO” group, you should click “DO” in the group list to focus on the group, and then click “Multi tags” to add tags. This is the correct way to add group/tag.