

PMC Utility Quick Start

[Version 1.1.7]



Warning

ICP DAS Inc., LTD. assumes no liability for damages consequent to the use of this product. ICP DAS Inc., LTD. reserves the right to change this manual at any time without notice. The information furnished by ICP DAS Inc. is believed to be accurate and reliable. However, no responsibility is assumed by ICP DAS Inc., LTD. for its use, or for any infringements of patents or other rights of third parties resulting from its use.

Copyright and Trademark Information

© Copyright 2013 by ICP DAS Inc., LTD. All rights reserved worldwide.

Trademark of Other Companies

The names used for identification only maybe registered trademarks of their respective companies.

License

The user can use, modify and backup this software on a single machine. The user may not reproduce, transfer or distribute this software, or any copy, in whole or in part.

Table of Contents

1	System Description.....	1
2	Before Installation.....	2
3	Software Installation.....	3
4	User Interface Introduction.....	5
4.1	Tool Bar.....	6
4.1.1	Changing Display Language.....	6
4.1.2	Open List File / Save List File.....	6
4.1.3	Scan PMC.....	6
4.1.4	Check PMC Info.....	7
4.1.5	Save Status Log.....	10
4.2	PMC List Area.....	10
4.2.1	Editing List.....	10
4.2.2	List Operation.....	10
4.2.3	The Network Setting of PMC.....	10
4.2.4	Launch Browser.....	11
4.3	Function Area.....	12
4.3.1	Firmware Update.....	12
4.3.2	Rule Update/Backup.....	12
4.3.3	Web UI Update.....	14

1 System Description

This document is intended to provide guidelines for ICP DAS PMC Utility software tool. This software tool has to be installed on PC and it enables to perform the following functions on PMC via Ethernet :

- (1) Firmware Update
- (2) Rule File Update and Backup
- (3) Replacement of Web UI Logo or Title

Please refer to the following chapter for more detail.

2 Before Installation

Before installing ICP DAS PMC Utility, please finishing installation of the PMC hardware, and make sure all wiring connections are accurate (e.g., please refer to the user manual for PMC).The PMC Utility requires the .NET framework version 2.0 to be installed on the target computer. Please follow the link below to get the framework package directly from Microsoft, if required.

- ◆ Download Microsoft .Net Framework Version 2.0 :

Link 1:

<http://www.microsoft.com/en-us/download/details.aspx?id=1639>

Link 2:

<http://www.microsoft.com/en-us/download/details.aspx?id=16614>

- ◆ Download Microsoft .Net Framework Version 3.5 :

Link 1:

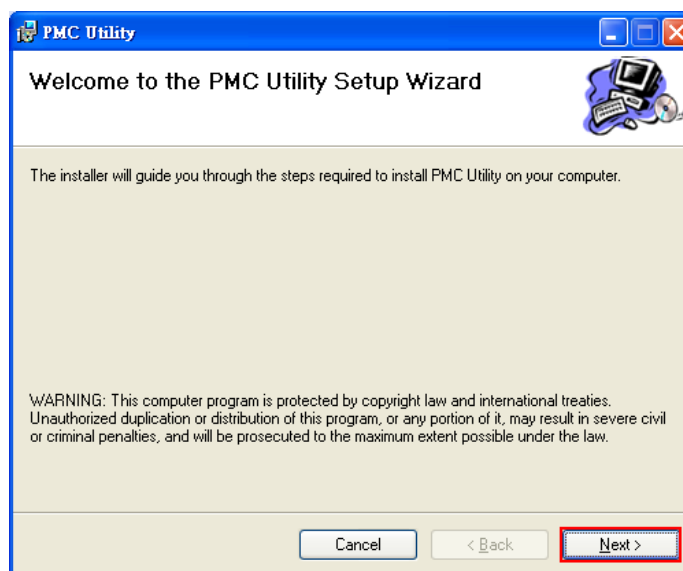
<http://www.microsoft.com/en-us/download/details.aspx?id=21>

Link 2:

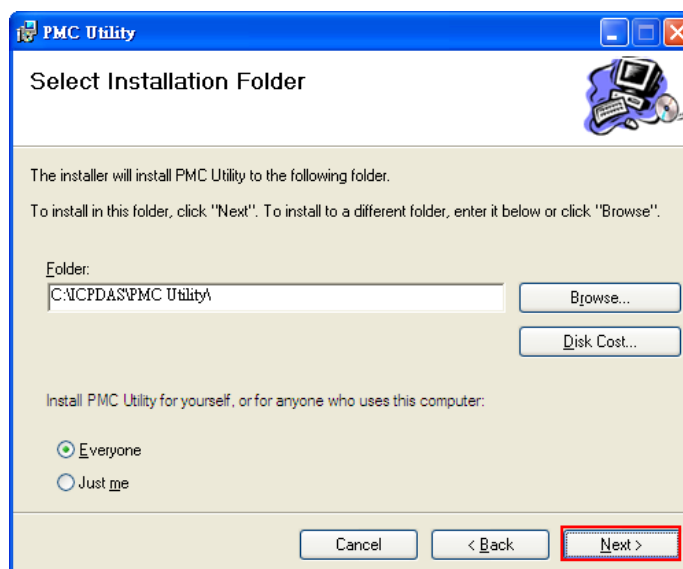
<http://www.microsoft.com/en-us/download/details.aspx?id=22>

3 Software Installation

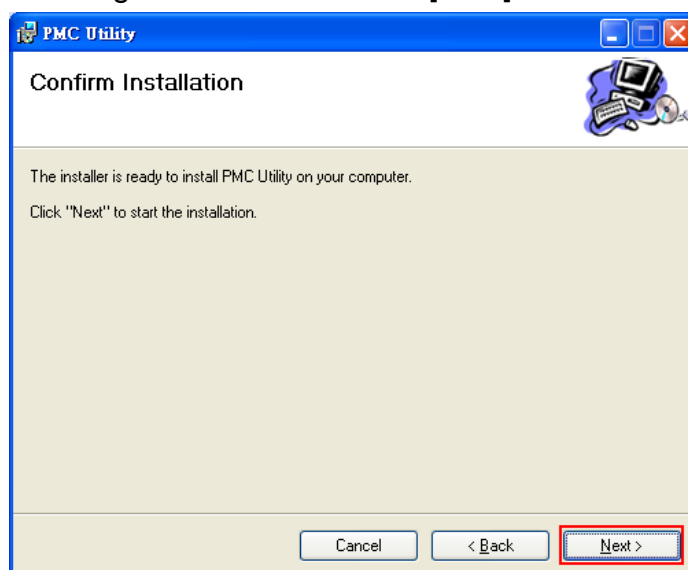
Please contact ICP DAS service or visit ICP DAS PMC Web site to obtain the latest version of the ICP DAS PMC Utility installer. Double click the ICP DAS PMC Utility installer to run the installation. Click [Next] to continue.



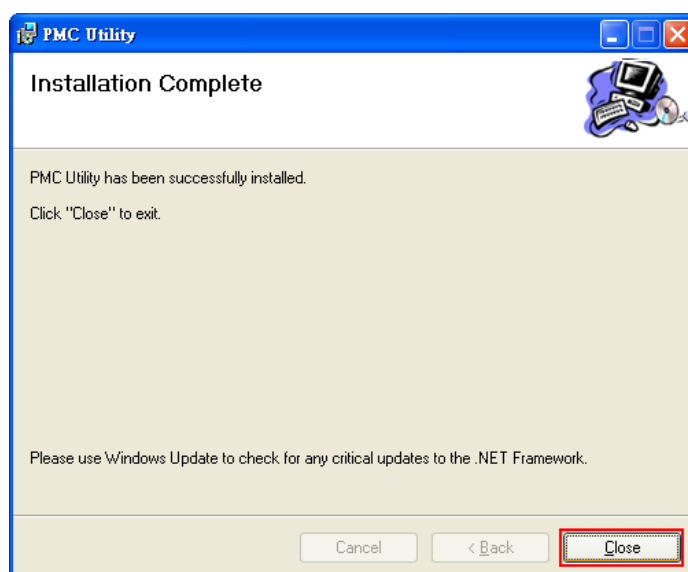
On [Select Installation Folder] page, input path or browse through file dialog box to select the destination folder and select the software user option, click [Next] to continue.



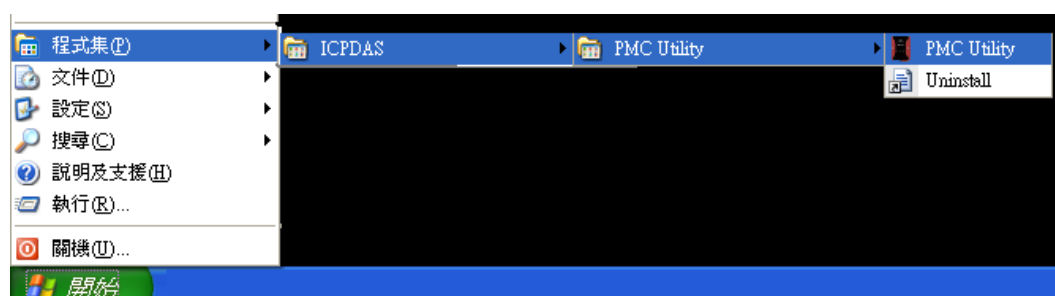
Make sure the settings are accurate. Click [Next] to start the installation.



When the installation process is completed, click [Close] to finish installing program.



After the installation is completed, you will find the PMC Utility Shortcut on the desktop and in the program menu: [Start]→ [All Programs]→[ICPDAS] →[PMC Utility]



4 User Interface Introduction

PMC Utility software tool Interface is shown as follow :

■ Tool Bar

Provide quick access to various functions:

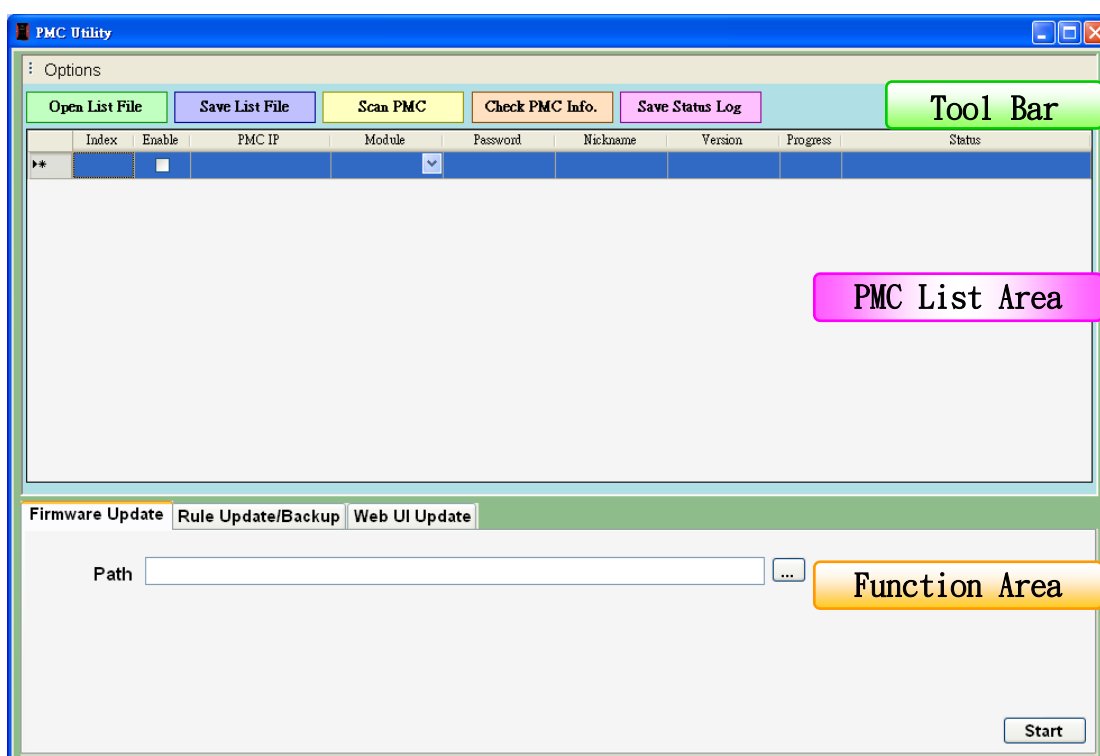
- ◆ Changing Display Language
- ◆ Open List File
- ◆ Save List File
- ◆ Scan PMC
- ◆ Check PMC Info.
- ◆ Save Status Log

■ PMC List Area

The user can edit PMC List in the PMC List Area.

■ Function Area

The user can perform operations such as Firmware Update / Rule Operation / Web UI Operation in the Function Area.

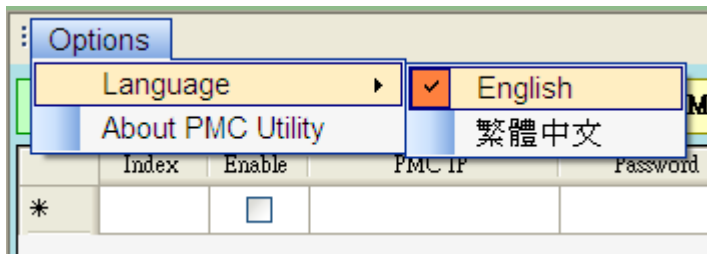


Please refer to the following sections for more detailed information.

4.1 Tool Bar

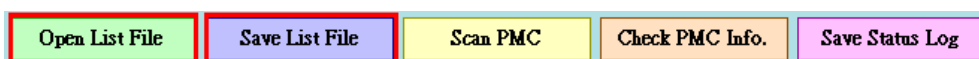
4.1.1 Changing Display Language

The user can click [Options] → [Language] to change display language.



4.1.2 Open List File / Save List File

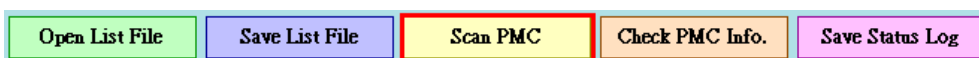
The user can click [Save List File] to save the edited PMC list data to local pc, and allows to reload these data later by [Open List File] function if required.

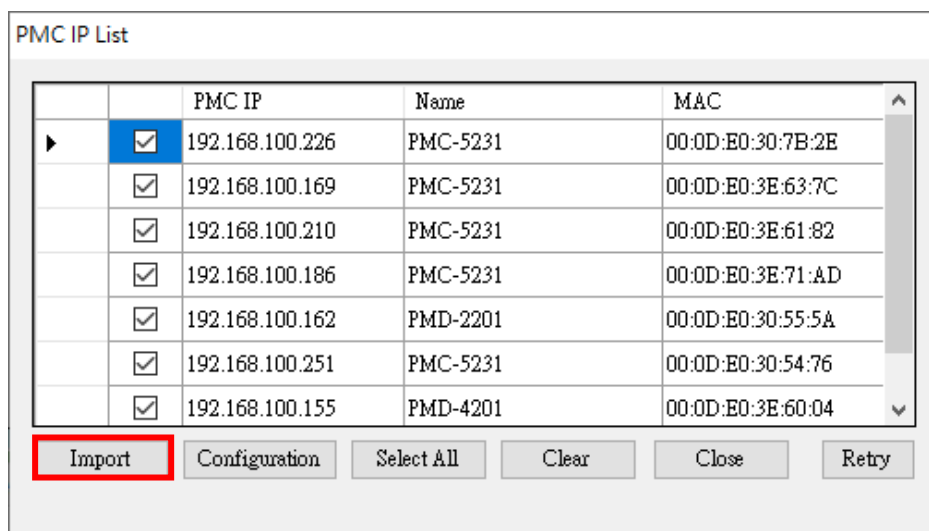
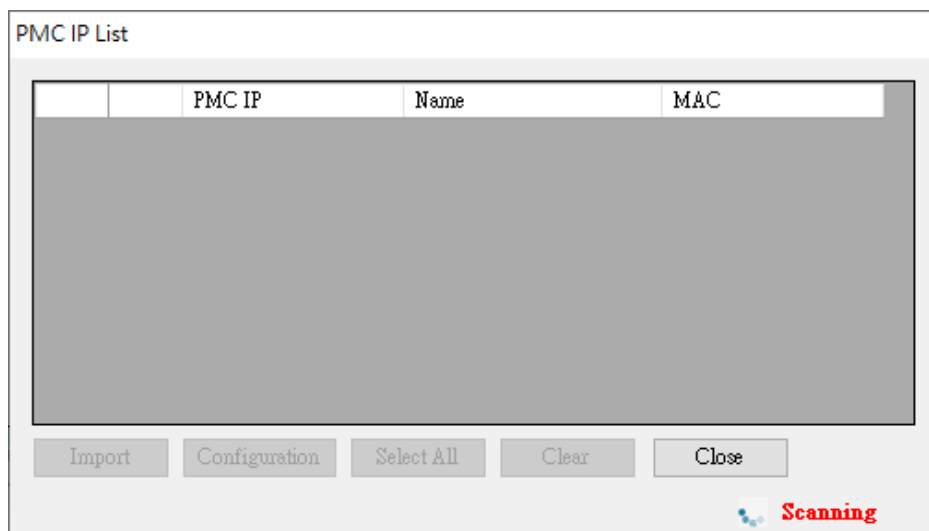


Note: After performing [Open List File] function, the original edited list will be replaced by the newly loaded list file data. Please save your editing list before opening the list file.

4.1.3 Scan PMC

The user can perform [Scan PMC] operation to scan the existed PMC list under the same domain. After scanning operation is finished, the PMC IP List will show the scanning result. User can click [Import] to import the selected PMC lists.





4.1.4 Configuration

The user can perform [Scan PMC] operation to scan the existed PMC list under the same domain. After scanning operation is finished, the PMC IP List will show the scanning result. Select the PMC which you want to modify parameters from the PMC list, then click [Configuration] button to setup the PMC parameters. After complete all setting, click [OK], and return to the PMC list windows.

4.1.5 Check PMC Info.

The user can use this function to get PMC information, such as :

- (1) Nickname
- (2) Firmware Version
- (3) Available space on the MicroSD card

Open List File		Save List File		Scan PMC		Check PMC Info.		Save Status Log	
Index	Enable	PMC IP	Module	Password	Nickname	Version	Progress	Status	
0	<input checked="" type="checkbox"/>	192.168.100.55	PMC-5151	*****	PMC-5151	3.0.9	100 %	Available space on the microSD card : 104....	
**	<input type="checkbox"/>								

Note : It is recommended running this function before performing the operations in the [Function Area]. This function allows checking the validity of the PMC password and the available space on the microSD card.

4.1.6 Save Status Log

The user can use this function to save the status log after performing the functions in the [Function Area] .



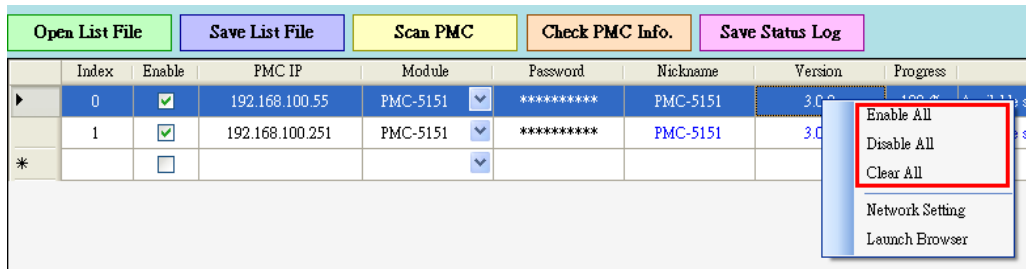
4.2 PMC List Area

4.2.1 Editing List

Before performing the function in the [Function Area], it is required to edit the PMC list first. There are three ways to edit the PMC list :

- (1) Run [4.1.3 Scan PMC](#) function and import PMC list data
- (2) Run [4.1.2 Open List File](#) function
- (3) Manually input PMC IP and Password

4.2.2 List Operation



Right click on the PMC list table, and the operation dropdown list will be displayed:

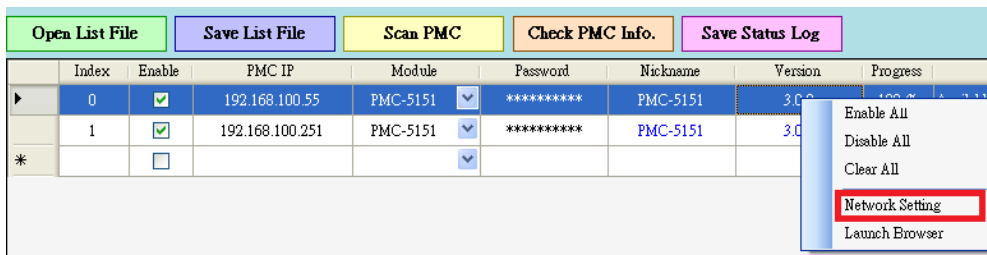
Enable All : Enable all PMCs on the list.

Disable All : Disable all PMCs on the list.

Clear All : Delete all list data.

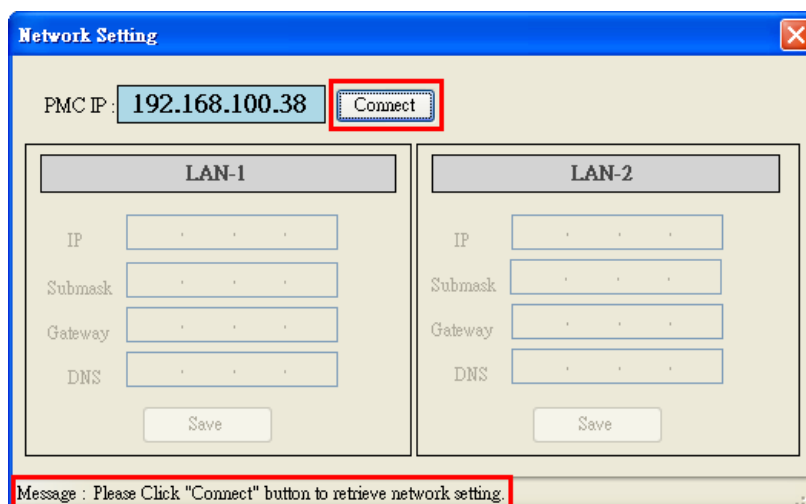
Note: Only the enabled PMC will run the specified function performed in the [Function Area].

4.2.3 The Network Setting of PMC

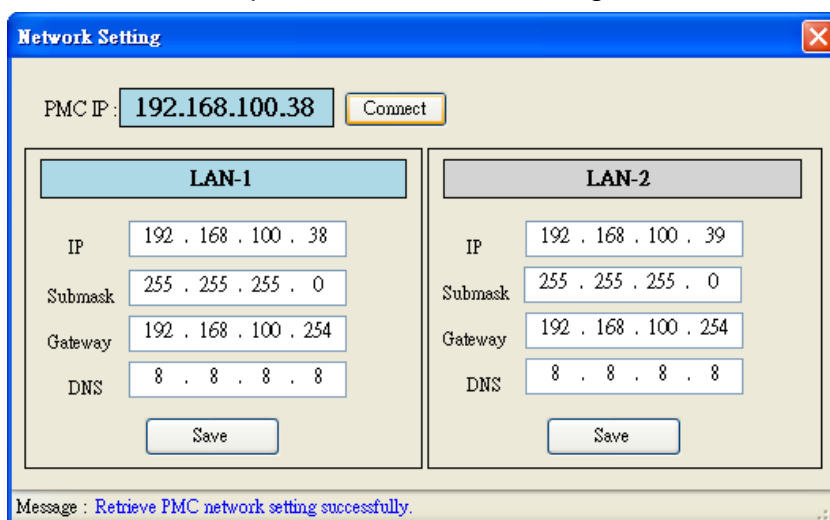


The user can click “Network Setting” to setup the detailed network

settings of PMC, the setting UI is as following:



Click “Connect” button to retrieve the detailed network setting of the selected PMC. After modifying the settings of LAN1 or LAN2, please click “Save” button to update the network settings of the selected PMC.



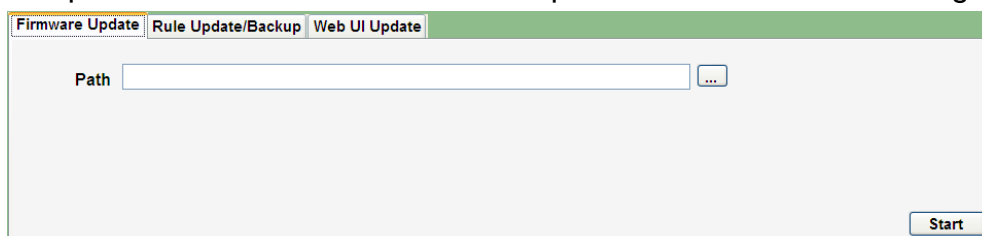
4.2.4 Launch Browser

The user can click “Launch Browser” button to launch the default browser, and the URL field will be filled as the IP address of the selected PMC automatically.

4.3 Function Area

4.3.1 Firmware Update

The user can use [Firmware Update] function to update firmware on multiple PMCs at the same time. The operation UI is as the following:



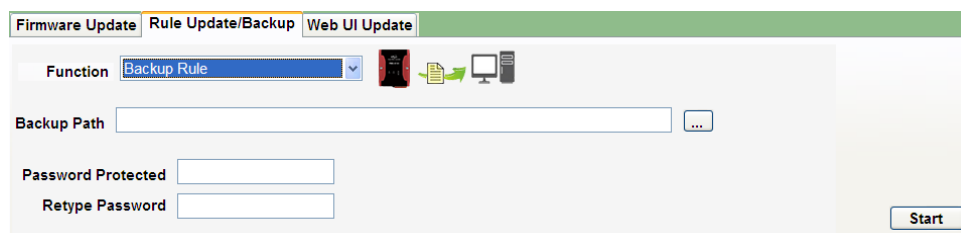
Please select the firmware path, and click start button to start the update operation.

4.3.2 Rule Update/Backup

Rule Update/Backup includes four functions :

- Backup Rule

The user can use [Backup Rule] function to backup PMC Rule file to local PC. The operation UI is as the following :



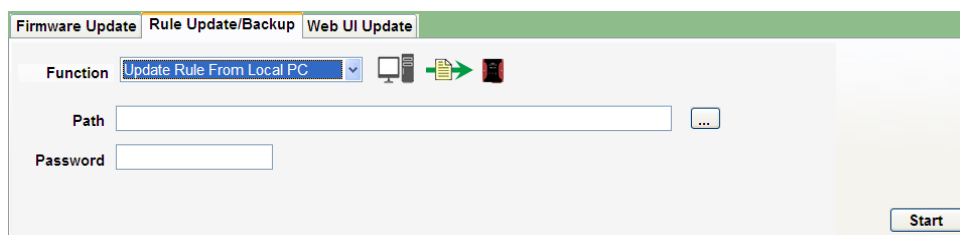
Backup Path : Please select the backup path.

Password Protected : Please input password to protect the backup rule file.

Note: The backup rule file will be saved in ZIP format; it is required to input the password previously set to unzip the file to avoid unauthorized access to the file.

- Update Rule From Local PC

The user can use [Update Rule From Local PC] function to update Rule file to multiple PMCs from the local pc. The operation UI is as the following:

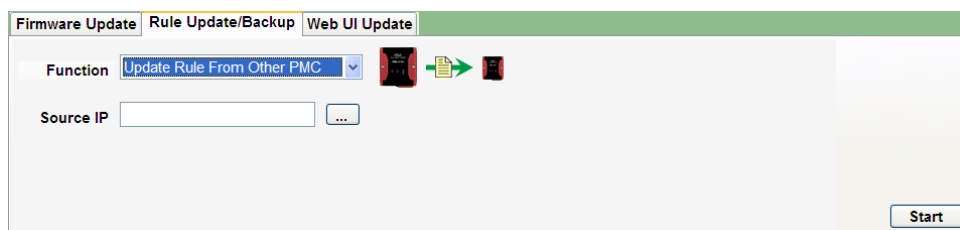


Path : Please select rule file path.

Password : Please input the password of the rule file.

■ Update Rule From Other PMC

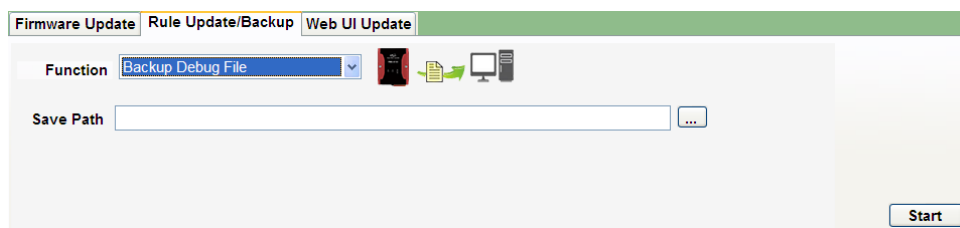
User can use [Update Rule From Other PMC] function to update the Rule file to multiple PMCs from one specific PMC. The operation UI is as the following:



Source IP : Please Click [...] to select source PMC on the PMC IP List.

■ Backup Debug File

When the user encounters difficulty in Rule settings and would like to send back the rule file to ICP DAS for debug or analysis, please use this function to backup the rule file to the local PC and send this file to ICP DAS. This Debug file will be encrypted for safety reasons and will be decrypted later by ICP DAS for further analysis



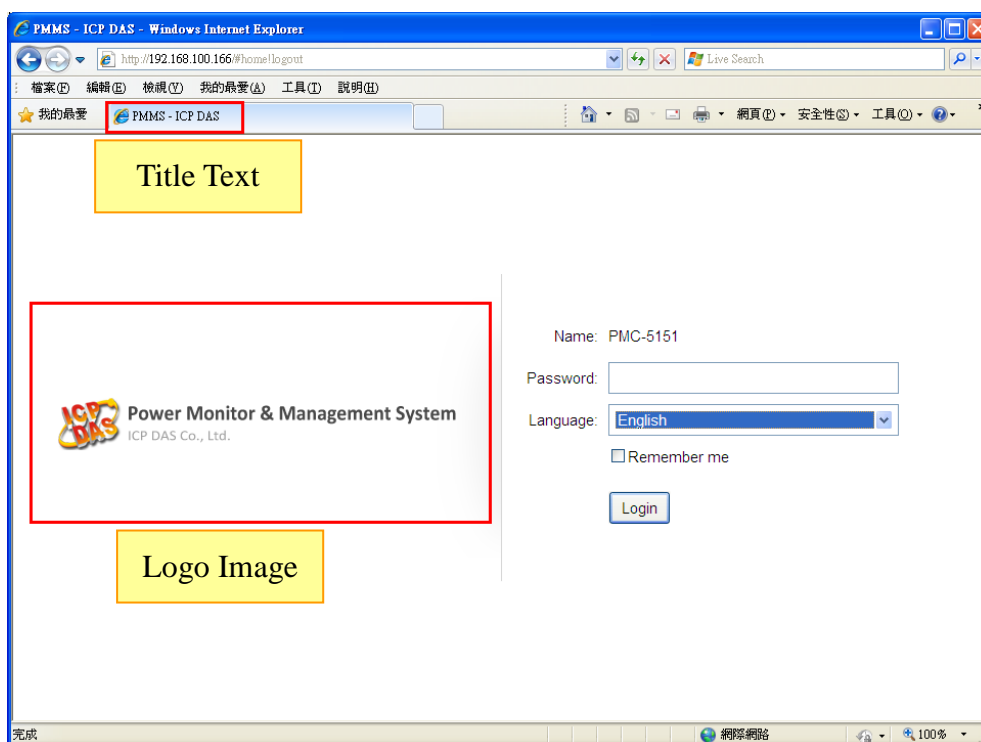
4.3.3 Web UI Update

The user can use [Web UI Update] function to update the Logo and Title on web page. The operation UI is as the following :

Logo Path : Please select the logo path.

Title Text : Please input the title text.

The replaceable Logo and Title on web page is shown as below:



If the user wants to reset the web page to default setting, please click the [Reset] button.