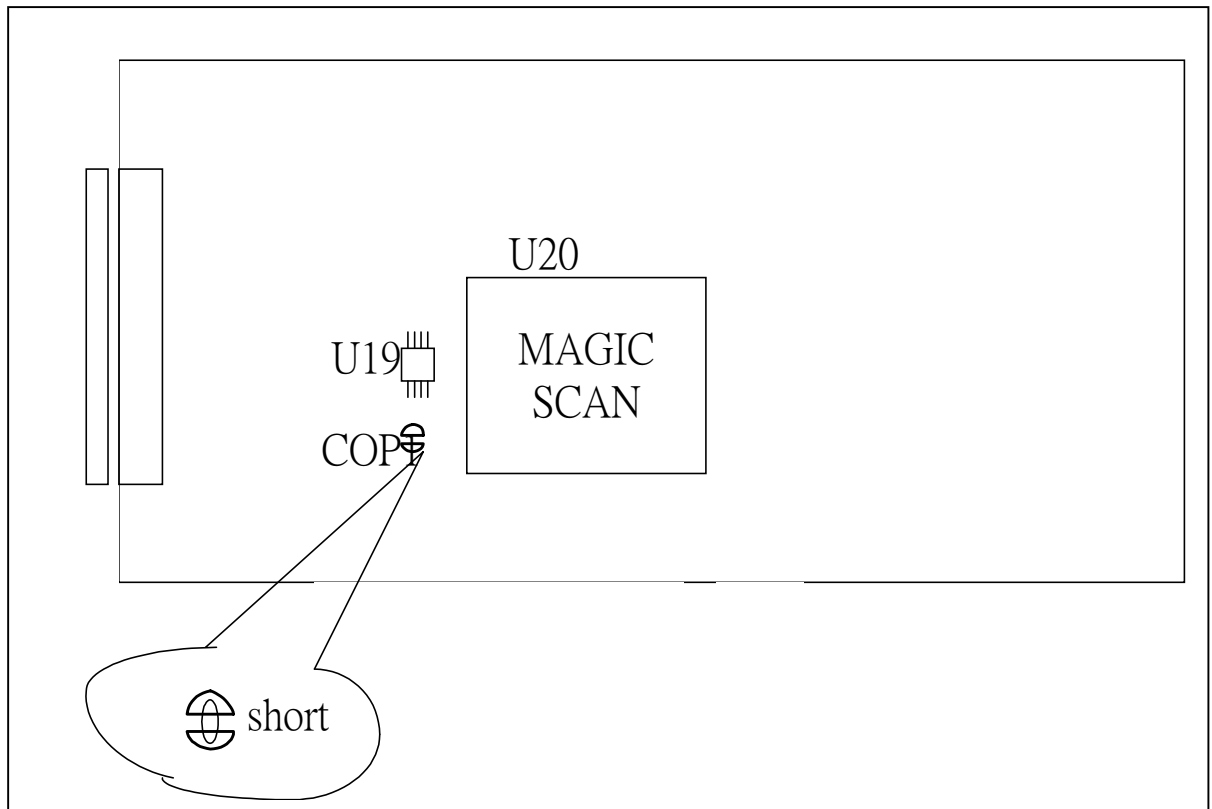


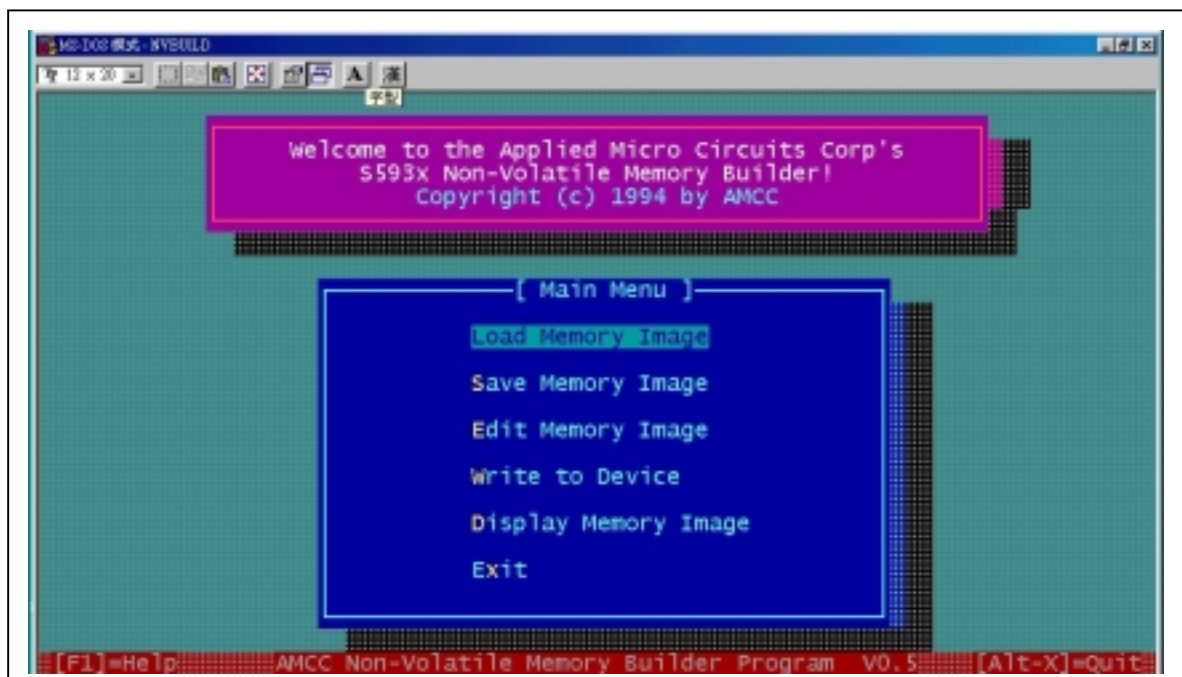
The EEPROM of PCI-1202/1602/1800/1802 card modify way:

Step 1: POWER OFF.

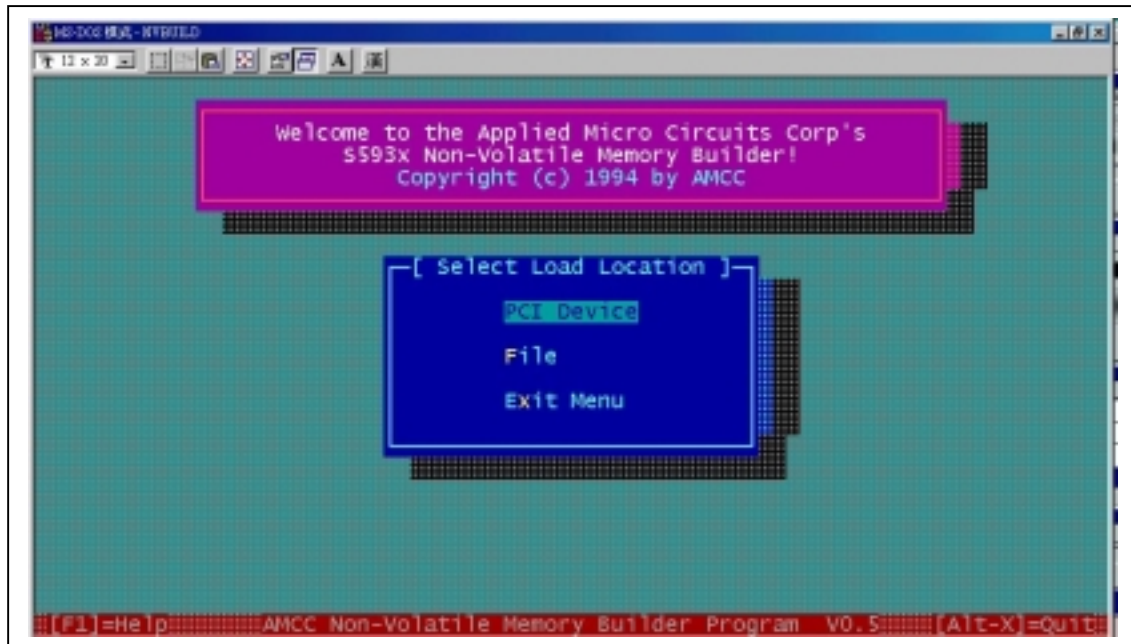
Step 2: component COP1 short.



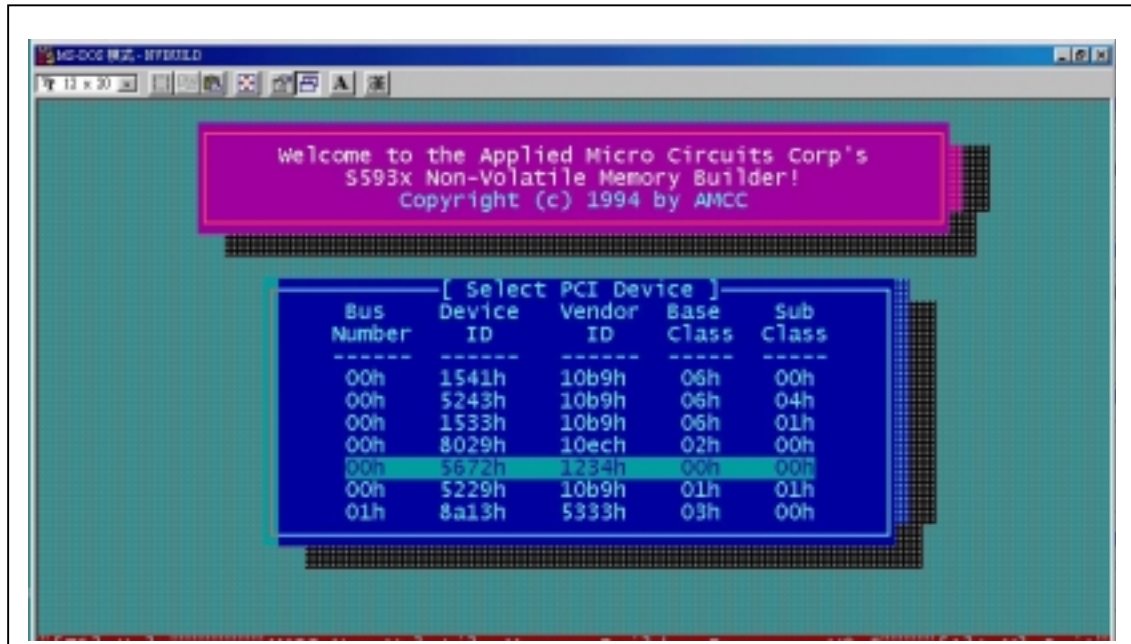
Step 3: PCI-1202/1602/1800/1802 inset to slot of PCI then POWER ON and RUN nvbuild.exe.



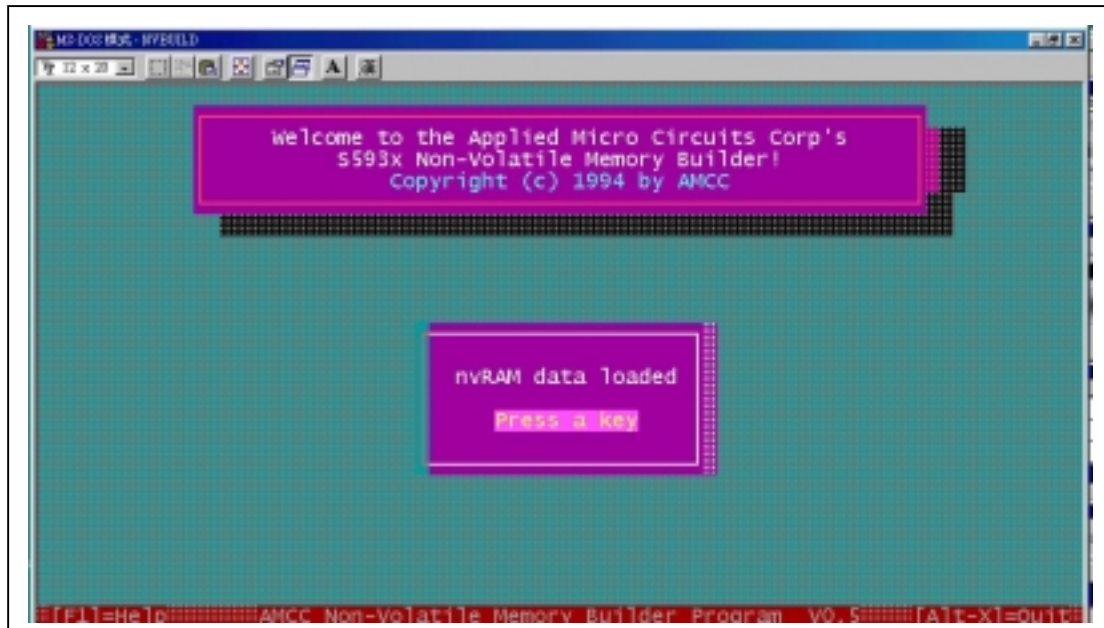
Step 4: select PCI Device.



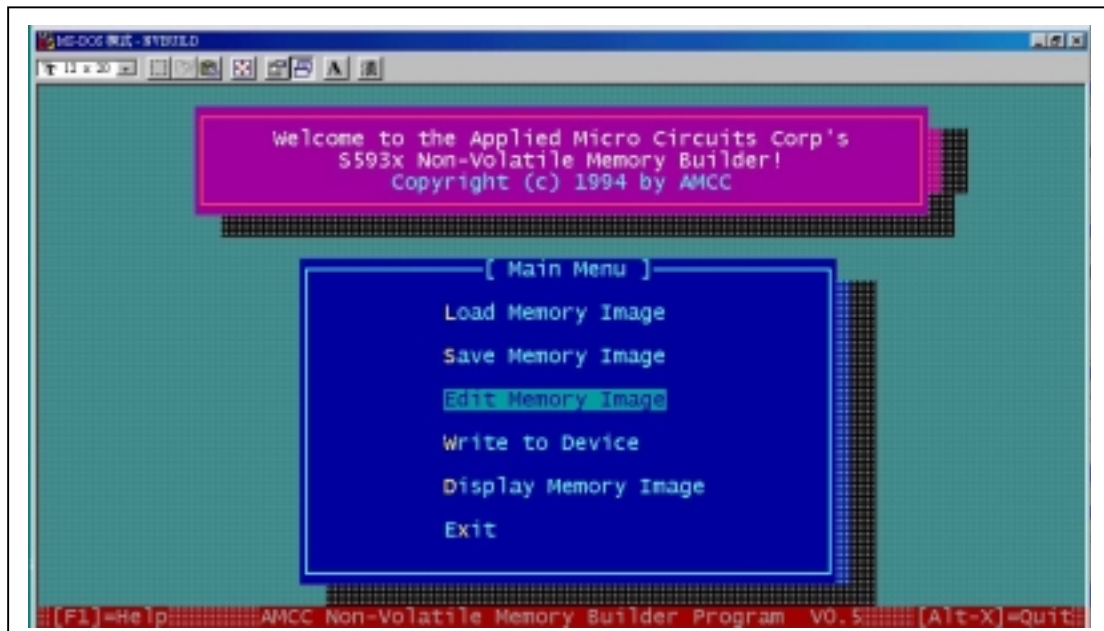
Step 5: select Device ID of PCI-1202/1602/1800/1802 card and press Enter key.



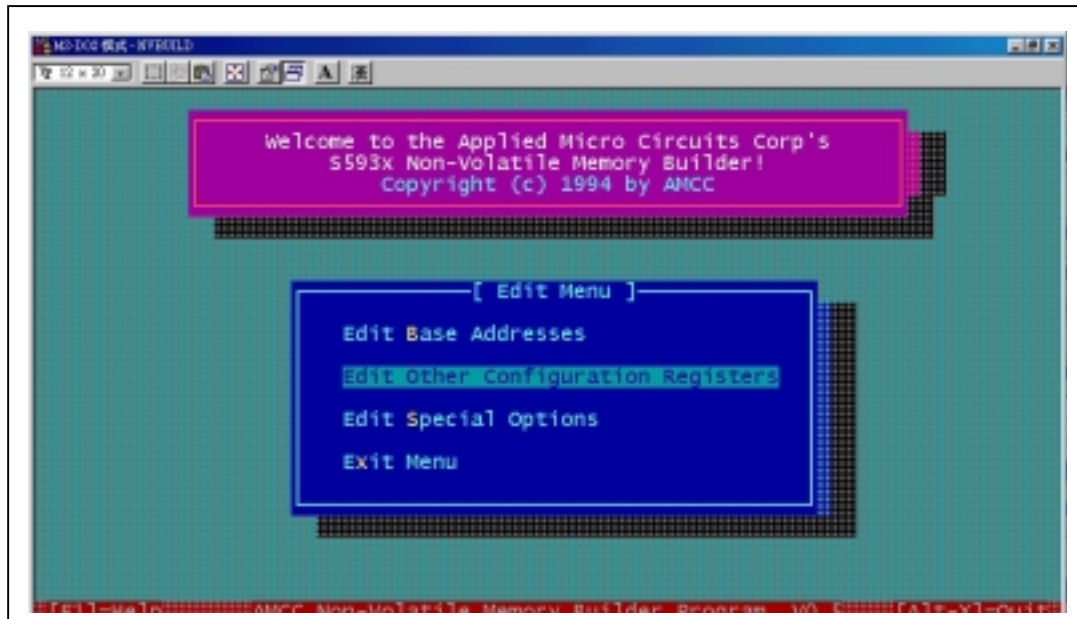
Step 6: press ENTER key.



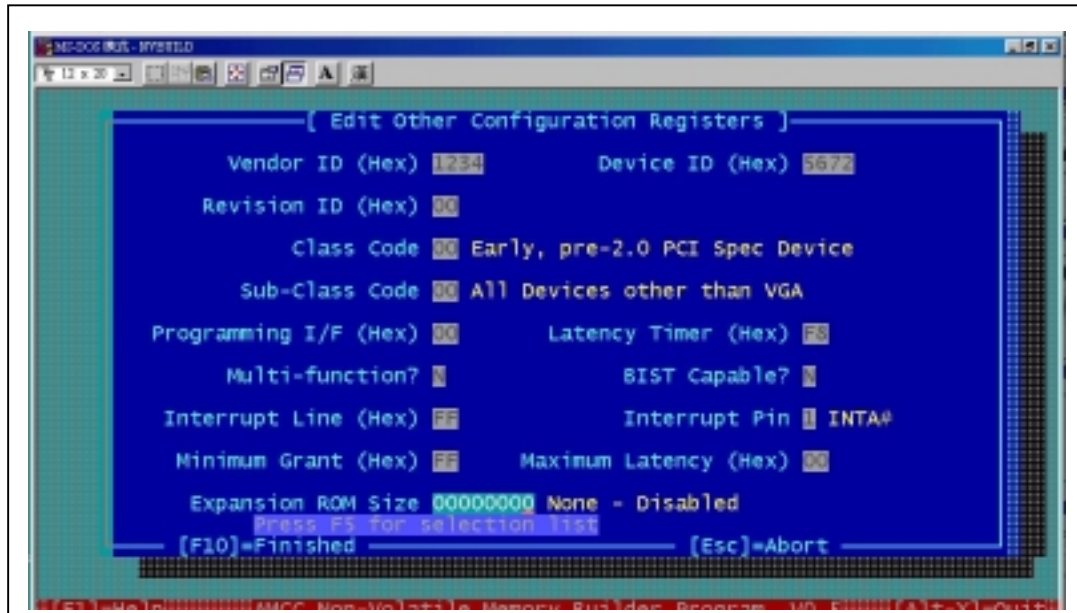
Step 7: select Edit Memory Image.



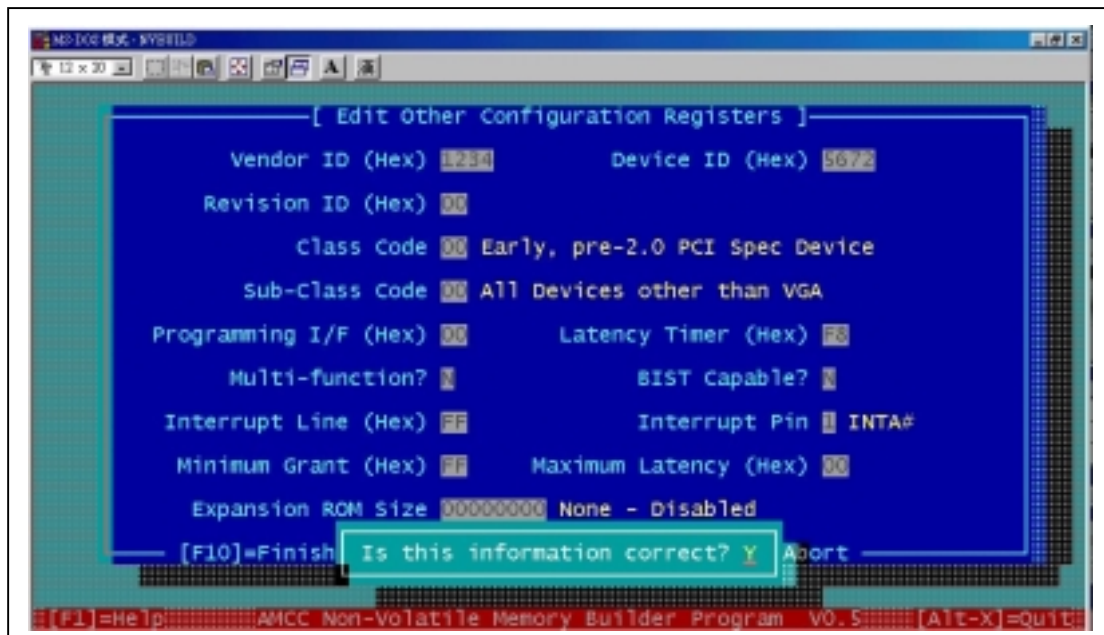
Step 8: select Edit Other Configuration Registers.



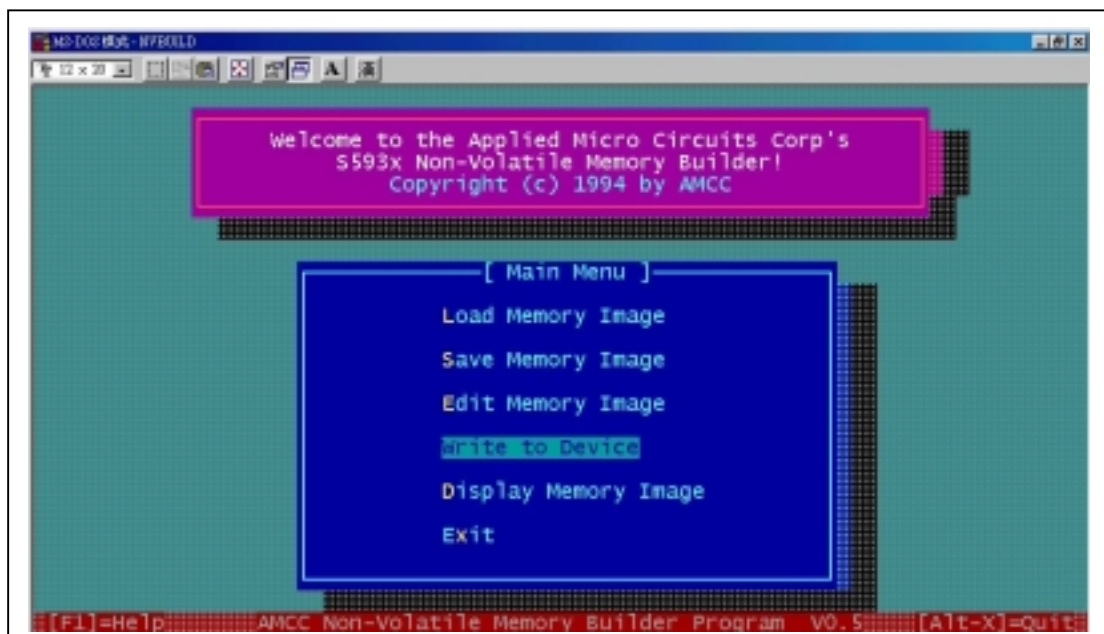
Step 9: Expansion Rom Size modify 00000000.



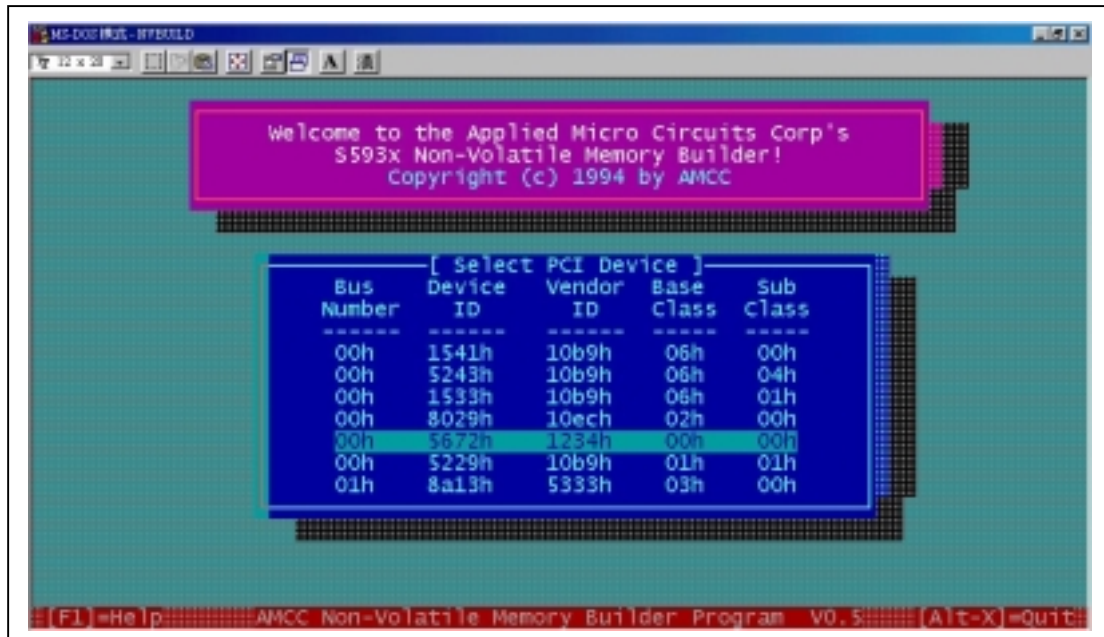
Step 10: select Y and press Enter key.



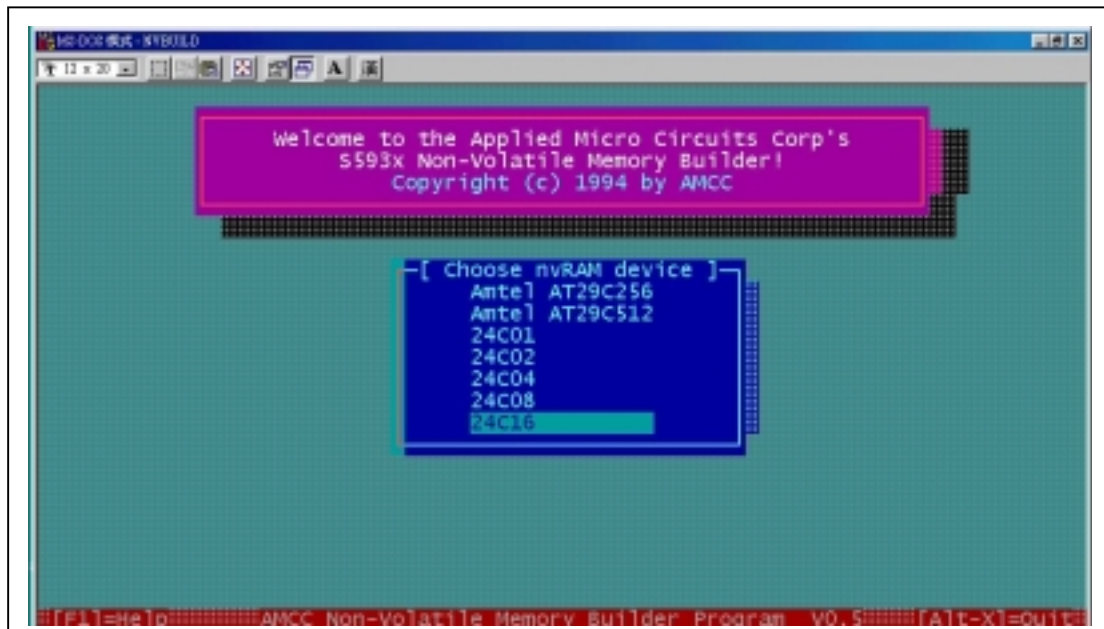
Step 11: select Write to Device.



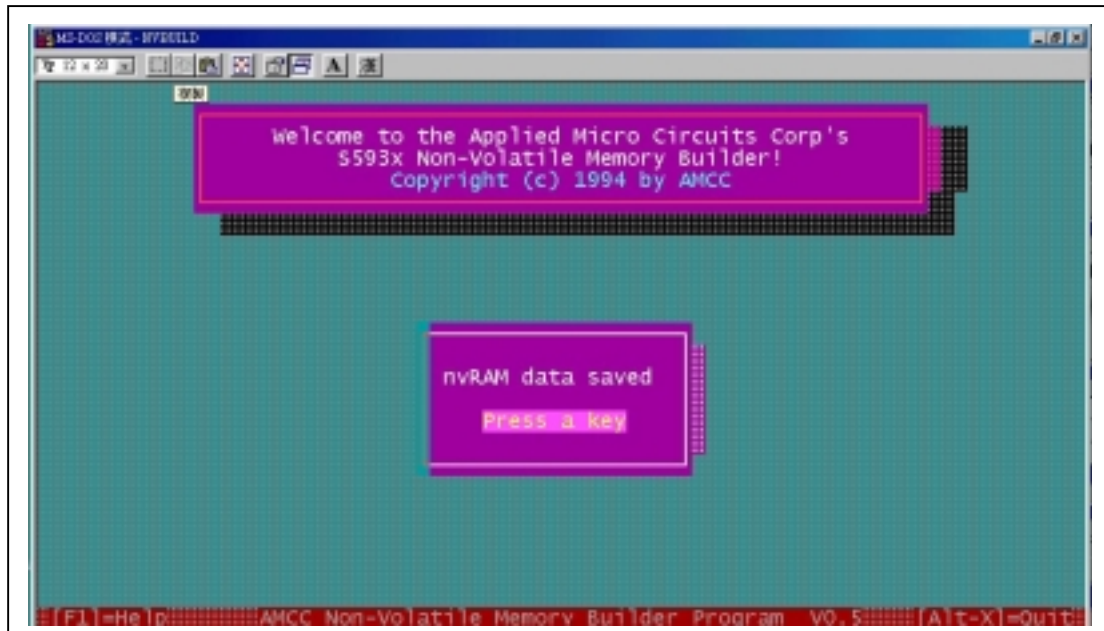
Step 12: select Device ID of PCI-1202/1602/1800/1802 card and press Enter key.



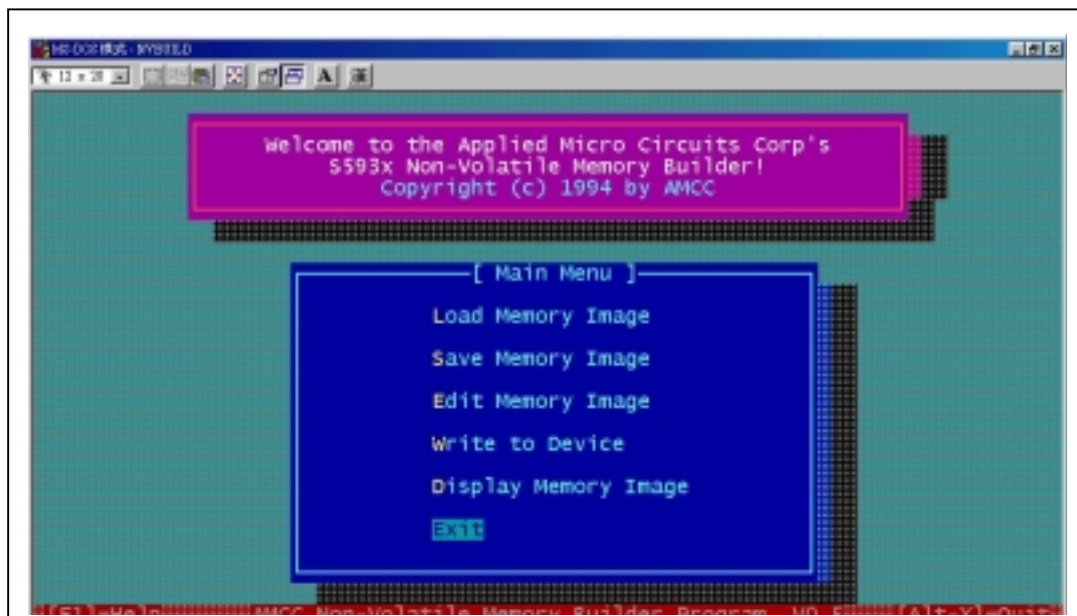
Step 13: select 24C16 and press Enter key.



Step 14: It's OK and already save to EEPROM.



Step 15: Return to OS and restart POWER.



Step 16: POWER OFF and component COP1 open.

