

# Virtual CE Pro

---

Quick Start Manual

[Version 4.0]



## **Warranty**

All products manufactured by ICPDAS Inc. are warranted against defective materials for a period of one year from the date of delivery to the original purchaser.

## **Warning**

ICPDAS Inc. assumes no liability for damages consequent to the use of this product. ICPDAS Inc. reserves the right to change this manual at any time without notice. The information furnished by ICPDAS Inc. is believed to be accurate and reliable. However, no responsibility is assumed by ICPDAS Inc. for its use, or for any infringements of patents or other rights of third parties resulting from its use.

## **Copyright**

Copyright 1998-2005 by ICPDAS Inc., LTD. All rights reserved worldwide.

## **Trademark**

The names used for identification only maybe registered trademarks of their respective companies.

## **License**

The user can use, modify and backup this software on a single machine. The user may not reproduce, transfer or distribute this software, or any copy, in whole or in part.

## Basic Overview

Virtual CE is composed of two main components: The server which runs on the target (CE) device and the client software which runs on a Desktop PC. Once a connection is established between the client and server (initiated by the client), the client will periodically send requests for screen updates and send mouse/key click information to the server to simulate.

Each video frame is inter-compressed against the previous frame and then intra-compressed with a modified LZW scheme to minimize the amount of data transmitted from server to client.

## Main Features

- Save compressed AVI files
- Rotate the display to any angle in 90 degree increments.
- Screen captures saved to either BMP, GIF or JPG.
- Copy clipboard contents to CE and back to PC.
- Rapid data entry from your more comfortable PC mouse and keyboard.
- 1-18 frames per second capture speed (depending on device and communication conduit).
- Support for direct IRDA, Serial, USB, ethernet or ActiveSync communications.
- Minimal impact on target device CPU while capturing.
- Auto-discovery of the target device on a LAN.
- Works across the internet.
- Capture screen shots to a BMP file or the clipboard.
- Supports 2 + 4-bit monochrome and 8 + 16-bit color displays.
- Scale image 1-3X.
- Multiple instances of VCE can run on the same PC allowing multiple devices to be controlled simultaneously.
- Custom 'skinnable' window - sample skins for iPAQ, Casio EM500 & Jornada 5xx included.
- One-click capture of screen shots to BMP files with auto-naming.
- Capture session to a standard AVI file for distribution.
- Capture session keys/clicks for later playback.
- Toggle toolbar display.
- Toggle 'always-on-top' window feature.
- Paste text from the PC clipboard to the CE device.

**There are several enhanced functions etc. file explorer, image capture, soft reset. Enjoy it!!**

## How to start VCE Pro 4.0

Step 1: Copy v\_remote.exe to \CompactFlash\VCE in WinCon.

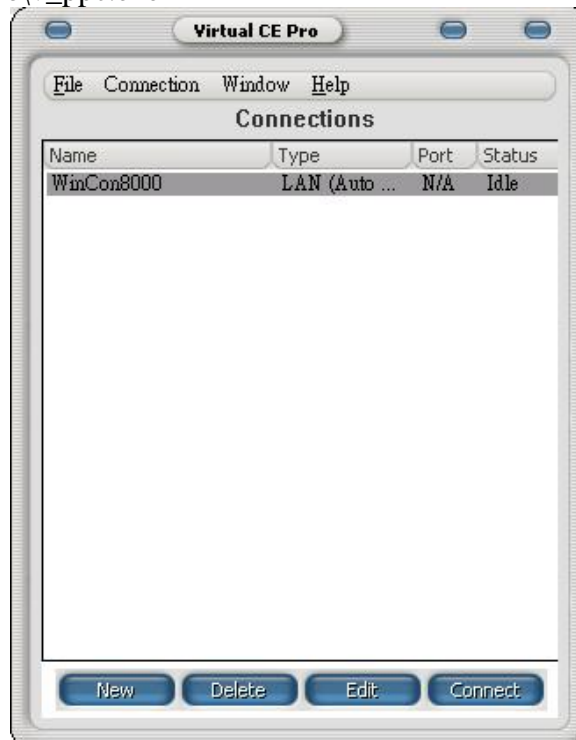
Step 2: Execute v\_remote.exe in WinCon and configure it as below then click OK.

After setting password, don't forget to press "Save and Reboot" button in WinCon Utility.

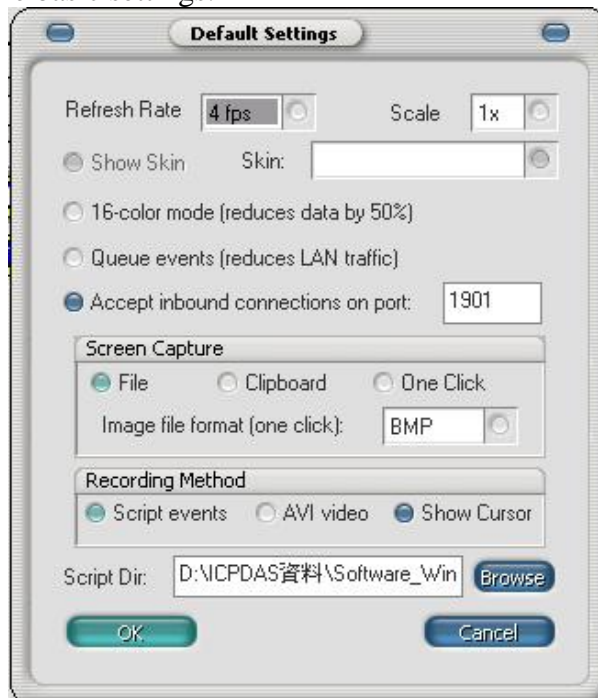


Step 3:Execute VCE\_Pro.exe on Desktop PC to install Virtual CE Pro Client.

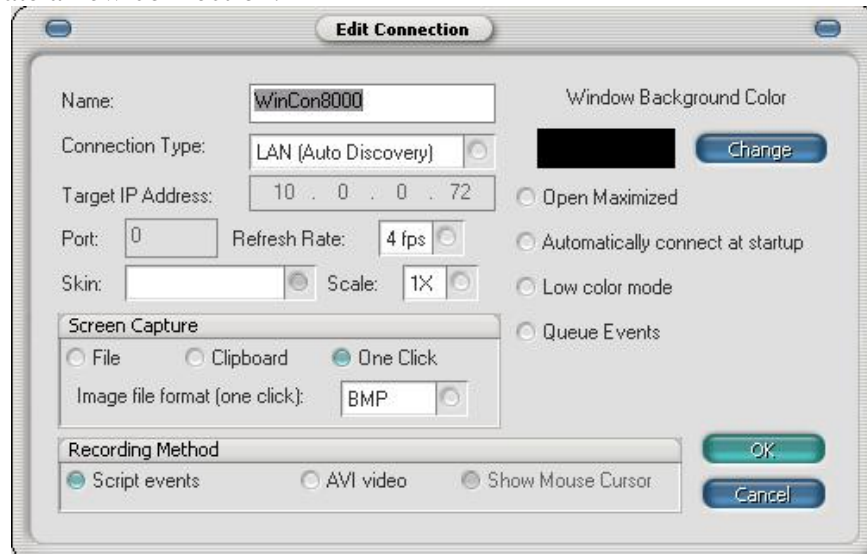
Step 4:Select “Virtual CE Pro Client” from [Start]->[DAQPro]->[VCE\_Pro] or execute "C:\DAQPro\VCE\_Pro\v\_ppc.exe"



Step 5: Configure some basic settings.



Step 6: Create a new connection.



Step 7: Press "Connet" button. VCE will automatically discovery the available device within the LAN.



Step 8: Enter your password and press "OK" button.



Step 9: After that, you will see the screen of target device.

