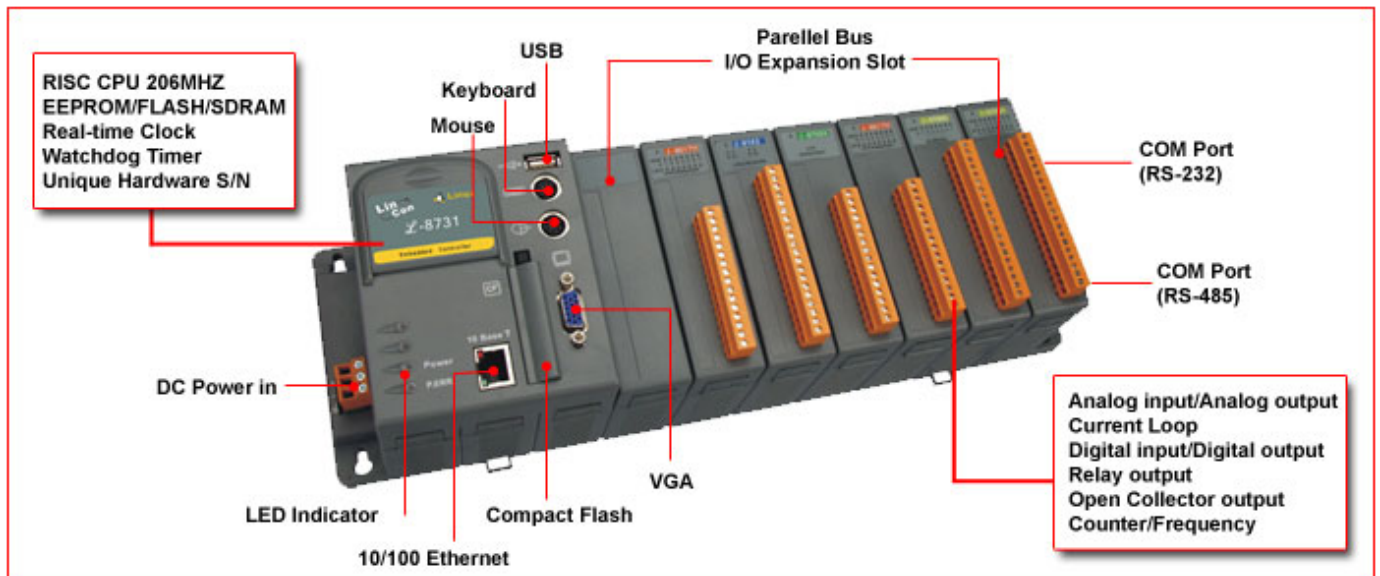


# LinCon-8x3x

## OS\_Image Update Manual

(v1.2)



## 1. [ Software Required ] :

(1) **OS\_Image** : [linuxnk.bin](#)

Download Path: [ftp://ftp.icpdas.com/pub/cd/linconcd/napdos/linux/os\\_image/](ftp://ftp.icpdas.com/pub/cd/linconcd/napdos/linux/os_image/)

(2) **TFTP/BOOTP** :

Download Path:

<http://secure.enterasys.com/download/> -- "Enterasys Software – Other Software Products" Item

## 2. [ Preparation Steps ] :

(1) Install [TFTP/BOOTP](#).

(2) Connect the first and the fifth pins of the middle row in any slot of the LinCon. Please refer to the Fig.1 ( The left side in Fig.1 is the down side of LinCon slot )

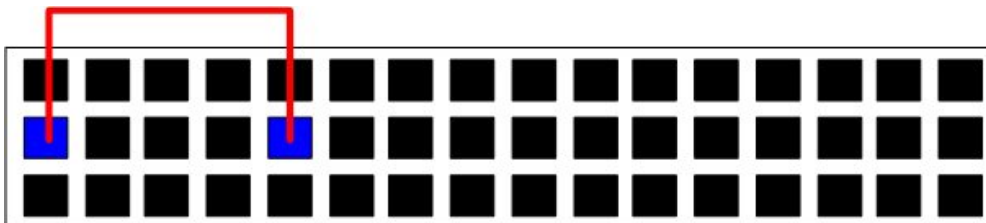


Fig. 1

(3) **Burning Wire** :

(i) Connect to the debug port of the LinCon and connect to the COM Port of PC. This is used to see the process of OS burning(Refer to Fig.2 、3).



Fig. 2 The debug port position

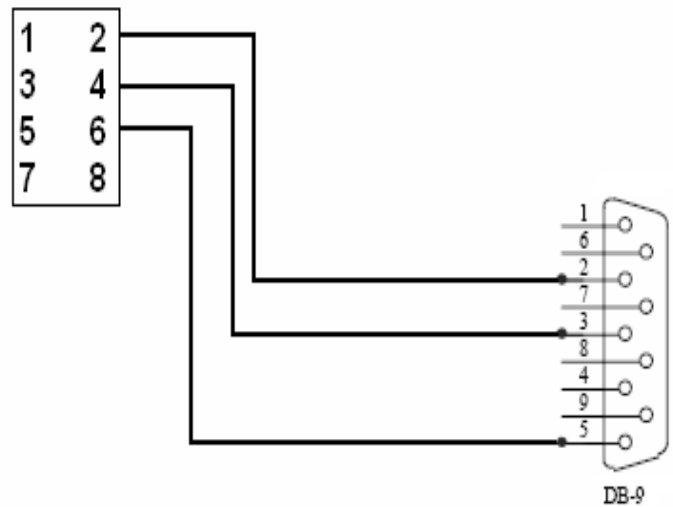


Fig. 3: The wire of debug port to COM port of PC

(4) Open “Hyper Terminal” of PC to monitor the process of update and the default COM port setting is 115200, 8, N, 1. (Refer to Fig. 4, 5).



Fig.4

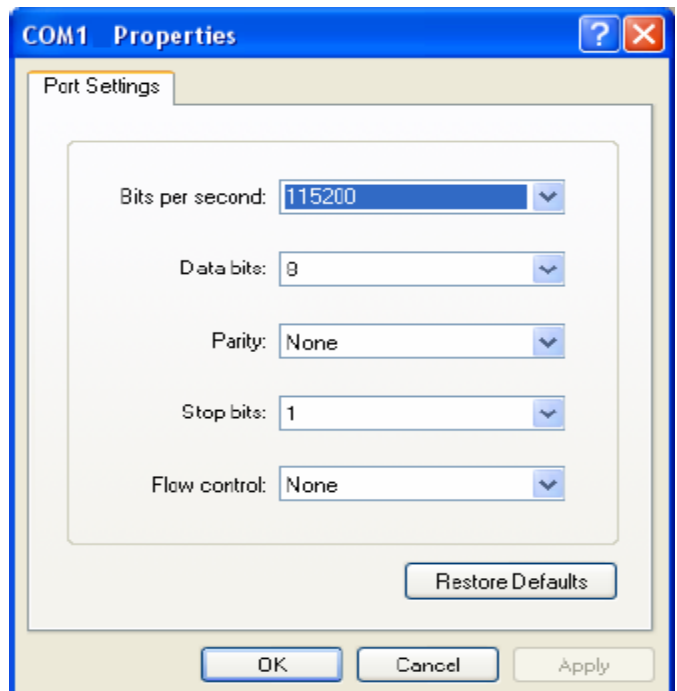


Fig. 5

**[Note]** The debug port of LinCon is for monitor the boot status or the status of downloading OS from Ethernet. It is not necessary when downloading the OS from Ethernet.

(5) Put the **linuxnk.bin** file is in the **bin** directory of TFTP/BOOTP.

### 3. [ Update Steps ] :

#### 3.1 Update OS\_Image :

( i )Open TFTP/BOOTP and input IP Address of PC in the IP Address field of the **Start Download** page, refer to Fig. 6.

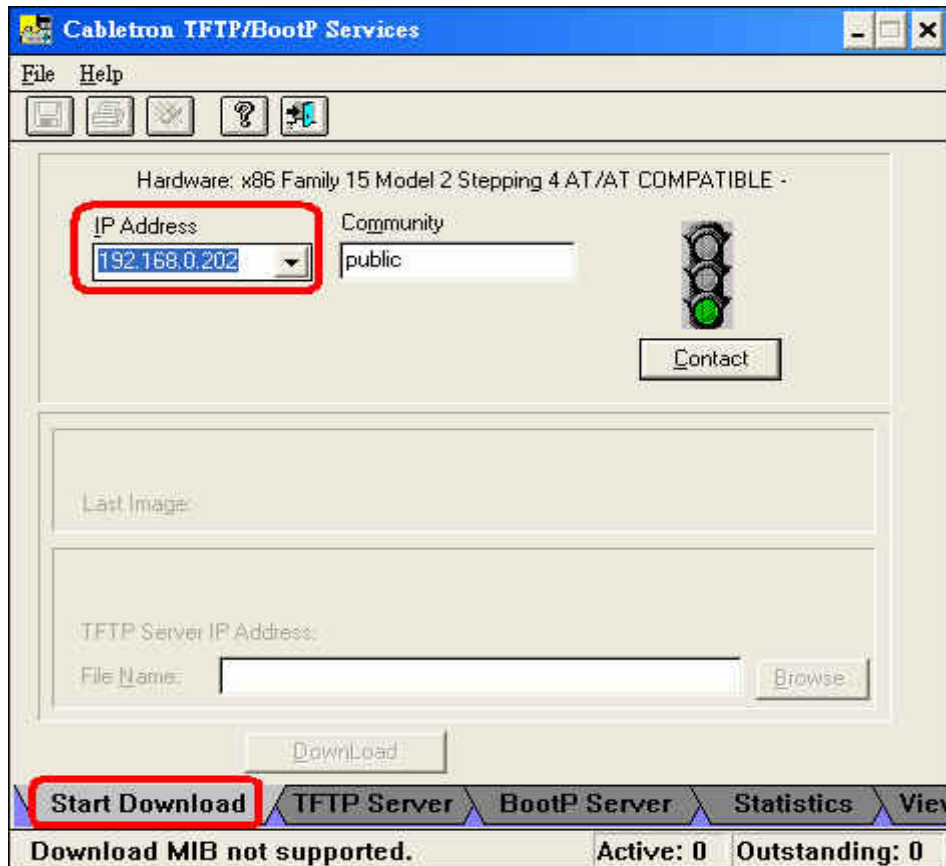


Fig. 6

(ii) In **BootP Server** page, Set **MAC Address** => 02:03:04:05:06:07 (fixed), **IPAddress** => IP Address of the LinCon , **File Name** => linuxnk.bin ( Refer to the Fig.7). When the the message of " **Sending bootp request** " shows in the "Hyper terminal", click the "**Set Arp**" button and then the linuxnk.bin file will be downloaded to the LinCon through the Ethernet. ( Refer to Fig.8 ). In the mean while, the percent of download process will be showed in **TFTP Server** page. ( Refer to Fig.9 )

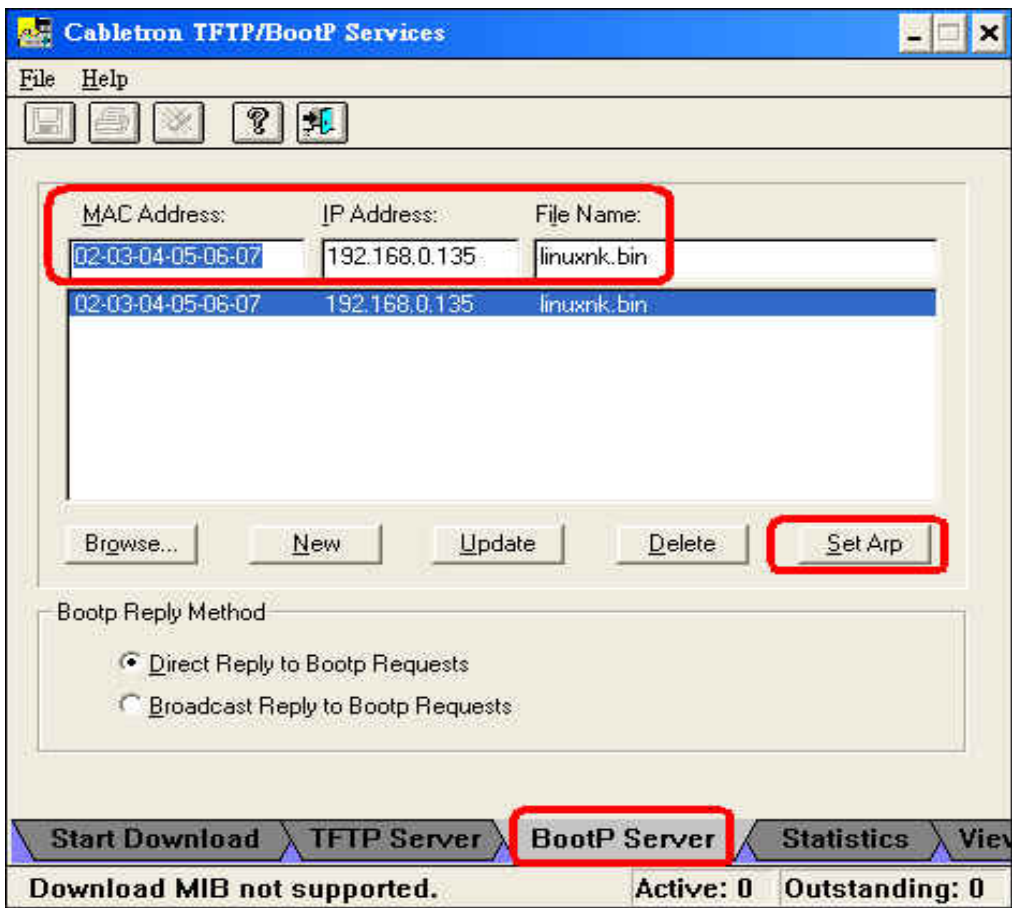


Fig. 7

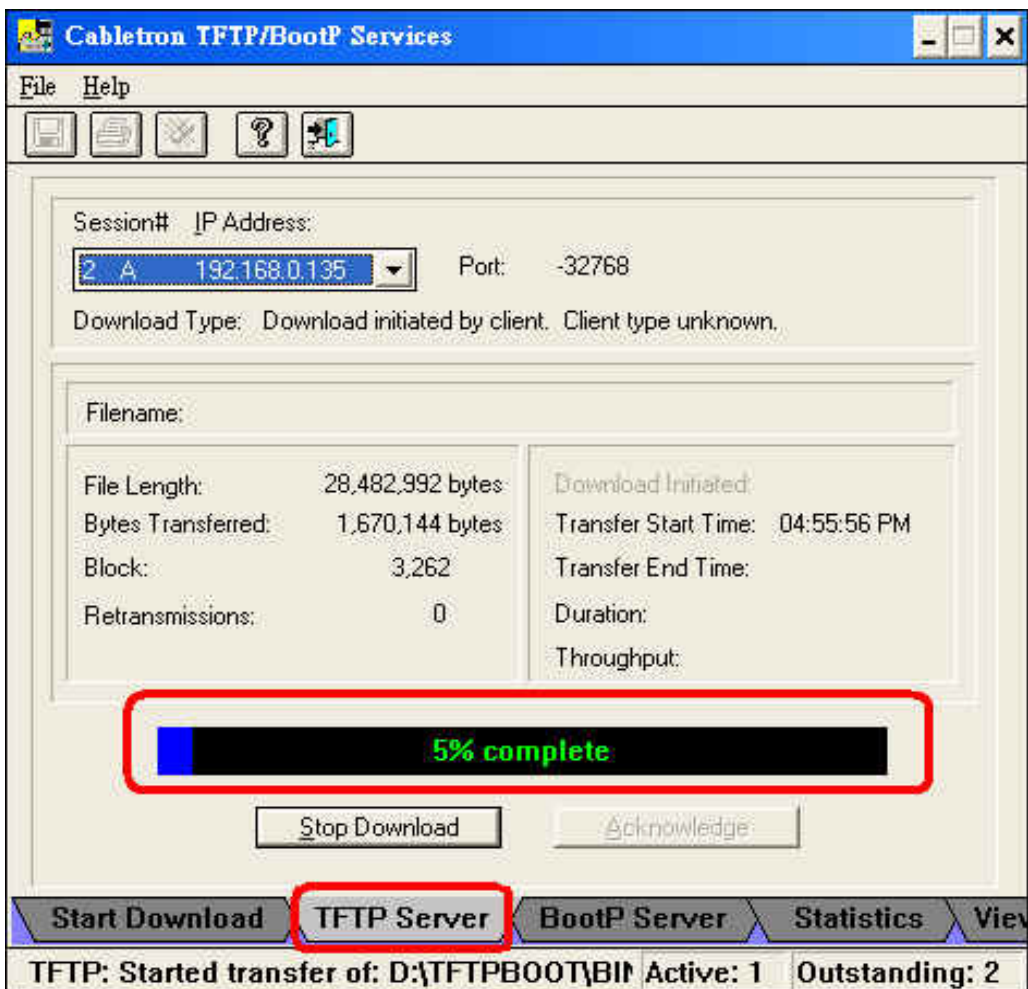


Fig. 8

