

iSN-201-WF Quick Start

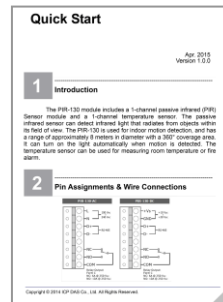
v1.0.0, Jan 2019

1

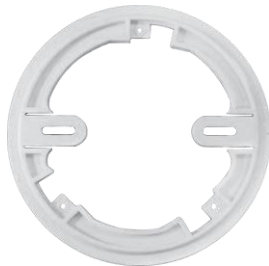
Package Contents



iSN-201-WF



Quick Start



Mounting Plate



M4x12 Drywall Screws

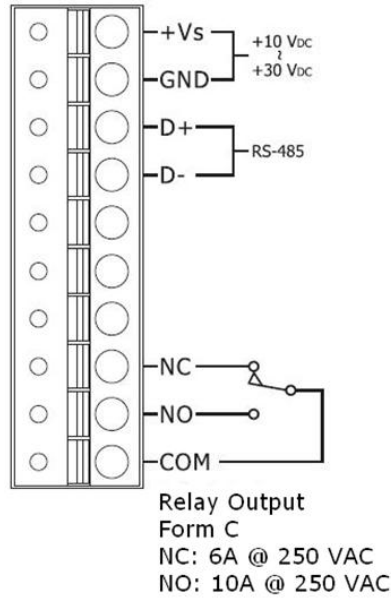
2

Default Settings

- Protocol : Modbus RTU
- Module Address : 96
- Baud Rate : 9600
- Checksum : Disable
- Format : N, 8, 1

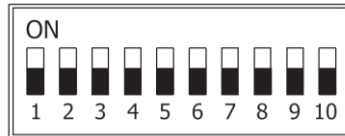
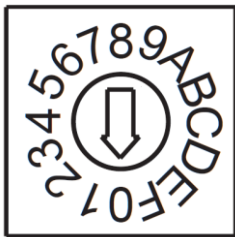
3

Pin Assignments

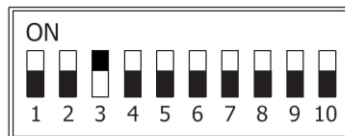


4

Switch Setting



When DIP Switch DIP3=OFF
Rotary Switch 0 to F for
Node Addresses **96 to 111**
(Low Node Address)

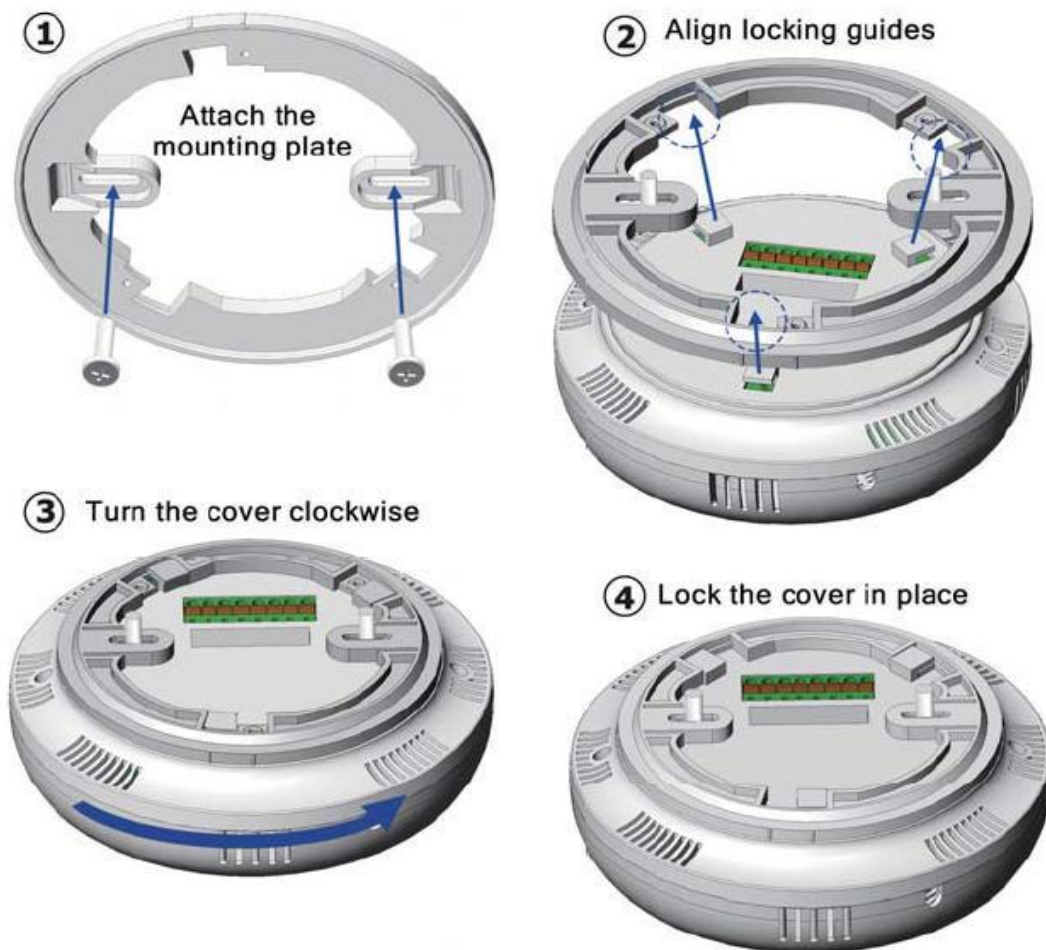


When DIP Switch DIP3=ON
Rotary Switch 0 to F for
Node Addresses **112 to 127**
(High Node Address)

Function		Switch Number and Setting			
		1	2	3	4
Protocol	Modbus	OFF	---	---	---
	DCON	ON	---	---	---
Configuration	Hardware	---	OFF	---	---
	Software	---	ON	---	---
Address	Low Node	---	---	OFF	---
	High Node	---	---	ON	---
Mode	Normal	---	---	---	OFF
	INIT	---	---	---	ON

5

Installation



6

Technical Support

- User Manual
<http://ftp.icpdas.com.tw/pub/cd/iio/Isn/isn-201/>
- Utility
<http://ftp.icpdas.com.tw/pub/cd/iio/utility/>
- Product Website
http://www.icpdas.com/root/product/solutions/remote_io/rs-485/sensor_series/isn-201.html
- E-mail
service@icpdas.com

7

Powering-on the iSN-201-WF logger

The factory default settings for Wi-Fi communication of the iSN-201-WF are as follows.

- Mode: **AP**
- Wireless Security: WPA/WPA2, "00000000"
- DHCP Server (AP Mode): DHCP Server on, start IP: 192.168.255.2
- Wi-Fi Channel (AP Mode): 11
- IP Address: 192.168.255.1
- Gateway Address: 192.168.255.254
- Subnet Mask: 255.255.0.0
- SSID: iSN-201-WF
- Modbus TCP Port: 502

The Wi-Fi IIOT Utility is provided to configure and test the iSN-201-WF module through the Wi-Fi interface. Please refer to chapter 4 of the user manual for details.

You can also use a browser to configure and test the iSN-201-WF module through the Ethernet interface. Please refer to chapter 3 of the user manual for details.