

For iP-8441 or VP-2111 or etc, those kinds of MiniOS7 inside PAC, its SRAM is 768KB not 512 KB and there will be an overlap area with Flash. If you need to read/write file from Flash, the function using 768KB and 512 KB SRAM are not the same.

There are two solutions for this problem, and I will suggest you to use solution 1.

Solution 1:

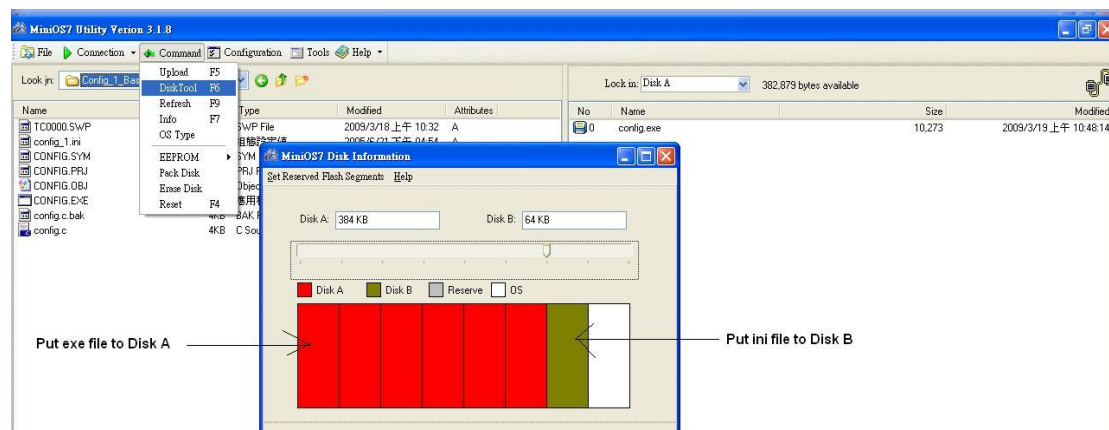
Step 1: Set disk A and B with MiniOS7 Utility first as below. Put exe file to Disk A, and the file (example: config\_1.ini) to Disk B

Download MiniOS7 Utility FTP site:

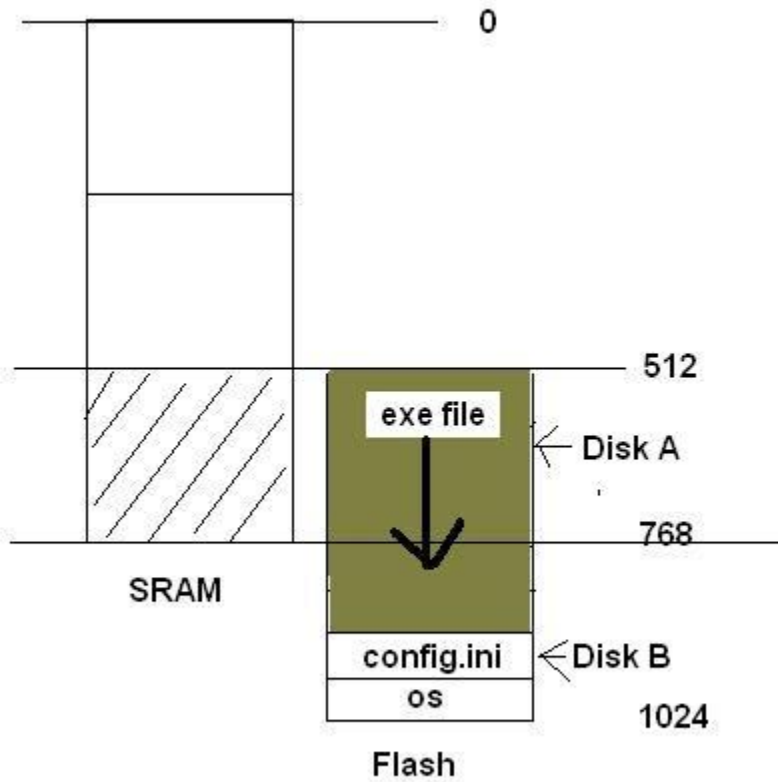
[ftp://ftp.icpdas.com/pub/cd/8000cd/napdos/minios7/utility/minios7\\_utility/](ftp://ftp.icpdas.com/pub/cd/8000cd/napdos/minios7/utility/minios7_utility/)

Step 2: Modify the demo, please refer to Config\_1\_Basic\_DiskAB demo

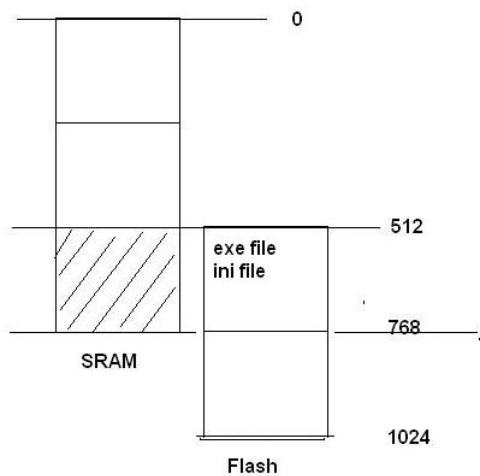
**config = GetFileInfoByName\_AB(1,"config\_1.ini"); //Opens one file by name from B disk.**



The address of SRAM and Flash has an overlap between 512 and 768.



Solution 2: Please refer to picture below: please refer to Config\_1\_Basic\_HiRAM demo



```

if(bNeedDisableHighRam)
{
    HighRamMode=GetHighRamMode();
    DisableHighRam();
}
...
...
...
if(bNeedDisableHighRam)
{
    SetHighRam(HighRamMode);
}

```

if we put exe file and ini file from the beginning of Flash, we have to add extra code to switch between Flash and SRAM. but we suggest you to put ini file at Disk B.

**Note:** When you use those demos in your program, it is necessary to add some declare in your function as below :

```
int HighRamMode;
```

```
extern int bNeedDisableHighRam;
```