



特色

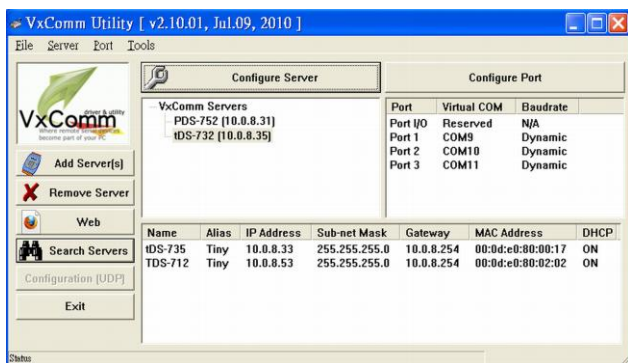
- 透過網路整合 RS-232/485 序列設備
- 透過 Virtual COM 功能擴充 PC 的 COM ports 數目
- Virtual COM 支援 32-bit and 64-bit Windows XP/2003/Vista/7
- 強大的可編程設備服務器
- 適用於嚴苛環境的看門狗設計
- 反向電源極性保護
- 各序列埠皆有靜電放電 +/-2 kV 保護電路
- RS-485 Port 帶有 Self-Tuner ASIC 自動切換收送方向
- 符合 RoHS 環保規範
- 內嵌高效能的泓格 MiniOS7 系統
- 具 LAN Bypass 功能的 2-Port 的 10/100 Base-TX
- 歡迎洽詢 ODM
- 低功率消耗
- 使用防火阻燃材質製成 (UL94-V0 Level)



簡介

PDS-5105D-MTCP 為可編程設備服務器，又稱為“Serial-to-Ethernet gateway”，可將 RS-232/485 設備透過網路連結在一起。

輸。在傳輸中如碰到模組因軟體、硬體或電源故障...等等因素而斷線，此時 LAN Bypass 功能將自動啟用，讓這條網路傳輸不被中斷而持續的在正常運作。



可透過 VxComm Utility 來使 PDS-5105D-MTCP 內嵌的 COM Port 模擬成為電腦主機的標準 COM Port。憑藉著獨立操作系統、通信協定及高適應性，設備服務器可以應付任何現實中的網路應用需求。

PDS-5105D-MTCP 系列模組帶有強大且可靠的 Xserver 編程架構，讓使用者可快速的設計出屬於自己的網路應用程式。內嵌的高效能 MiniOS7 啟動 PDS-5105D-MTCP 只需 1 秒並且可以快速的給予回應。

具 LAN Bypass 功能的 2-Port Ethernet Switch

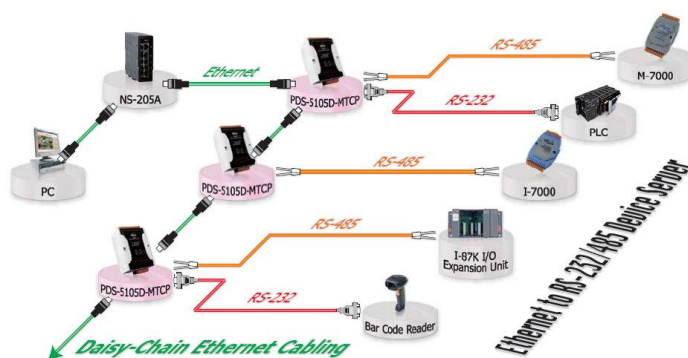
PDS-5105D-MTCP 具有 2-port 10/100 Base-Tx，能夠簡化串聯的網路設備的佈線。此外，還具有 LAN Bypass 功能，可允許二個網段 (Ethernet port1 及 port2) 的網路傳

LAN Bypass Feature



應用

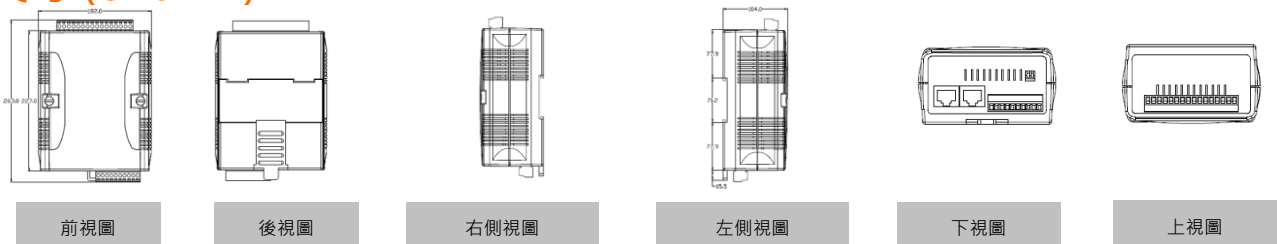
- 工廠自動化、大樓自動化及家庭自動化



規格

System	
CPU	80186 or compatible (16-bit and 80 MHz)
SRAM	512 KB
Flash	512 KB; Erase unit is one sector (64 KB); 100,000 erase/write cycles
EEPROM	16 KB
Watchdog Timers	Yes (0.8 seconds)
Communication Ports	
Ethernet	2-Port 10/100 Base-TX Ethernet Switch with LAN Bypass, RJ-45 x 2 (Auto-negotiating, Auto-MDI/MDIX, LED indicator)
COM1	RS-232(TxD, RxD, GND)/RS-485(D1+, D1-), Self-tuner ASIC inside, non-isolated
COM2~10	RS-485(Dx+, Dx-), Self-tuner ASIC inside, non-isolated
COM Port Formats	
Baud Rate	115200 bps Max. @ 10 Ports, half-duplex, 80% loading
Data Bit	7, 8: for COM1 and COM2 5, 6, 7, 8: for COM3~COM10
Parity	None, Odd, Even, Mark, Space
Stop Bit	1, 2: for COM1~COM10
LED Indicator	
5-digit 7 Segment	Yes
System	Red
Mechanical	
Dimensions (W x H x D)	91 mm x 123 mm x 52 mm
Installation	DIN-Rail
Case	Fire-Retardant Plastic (UL94-V0 Level)
Environmental	
Operating Temperature	-25° ~ 75°C
Storage Temperature	-30° ~ 85°C
Humidity	10 ~ 90% RH, non-condensing
Power Consumption	0.05 A @ 24 V _{DC}
Power	
Protection	Power reverse polarity protection
Frame GND	Yes (for EMS Protection)
Input Range	+12 ~+48 Vdc (non-regulated)
Power Consumption	4.8 W

尺寸 (Unit:mm)



訂購資訊

PDS-5105D-MTCP CR	Programmable Device Server with 10 RS-485 Ports, 2-Port Switch and LED Display. (RoHS)
-------------------	--

選購配件

GPSU06U-6	24 VDC/0.25 A, 6 W Power Supply
MDR-20-24 CR	24 VDC/1 A, 24 W Power Supply with DIN-Rail
CA-0903	9-Pin Female D-sub and RS-232 connector cable, 30 cm Cable
CA-0910	9-Pin Female D-sub and 3-wire RS-232 cable, 1 M Cable
NS-205 CR	Unmanaged 5-Port Industrial Ethernet Switch (RoHS)
DIN-KA52F-48	48 VDC/0.52 A, 25 W Power Supply with Din-Rail

Images of the selected accessories: GPSU06U-6, MDR-20-24 CR, CA-0903, CA-0910, NS-205 CR, and DIN-KA52F-48.