



PDS-220Fx Series Quick Start

v1.1, Aug. 2018

What's in the box?

In addition to this guide, the package includes the following items:

PDS-220FT



PDS-220Fx Series x 1

PDS-220FC



or



Quick Start x 1 (This Document)

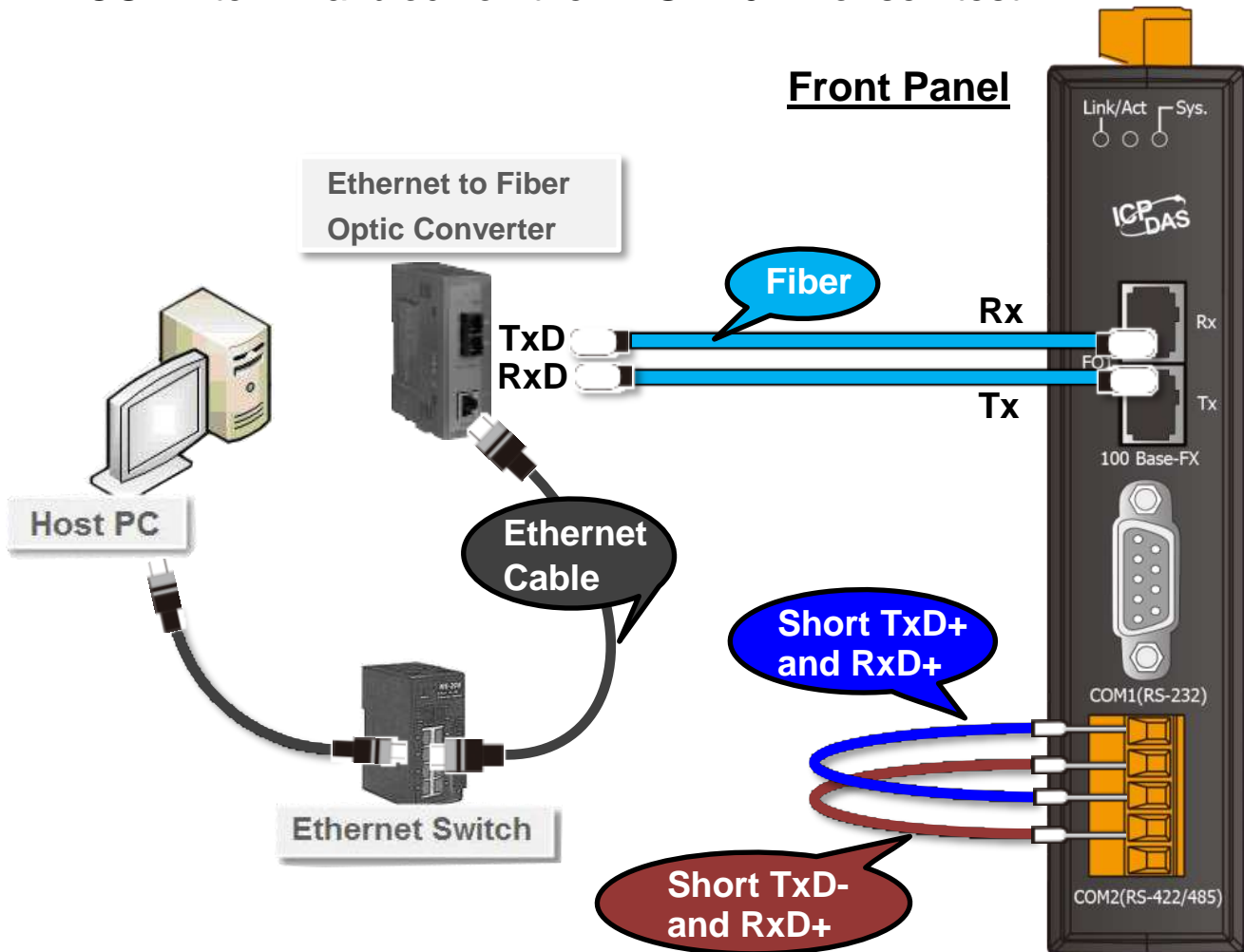
Preparations for Devices

- An External Power supply device, e.g., MDR-20-24 (Optional).
http://www.icpdas.com/products/Accessories/power_supply/power_list.htm
- An Ethernet to Fiber Optic Converter, e.g., NS-200AF Series (Optional).
http://www.icpdas.com/root/product/solutions/industrial_ethernet_switch/ns-200af.html
- An Ethernet Hub, e.g., NS-205 (Optional).
http://www.icpdas.com/products/Switch/industrial/industrial_list.htm
- Make sure your PC has workable network settings.
Disable or well configure your Windows firewall and Anti-Virus firewall first, else the **“Search Servers”** on **Chapter 3** may not work. (Please contact with your system Administrator)

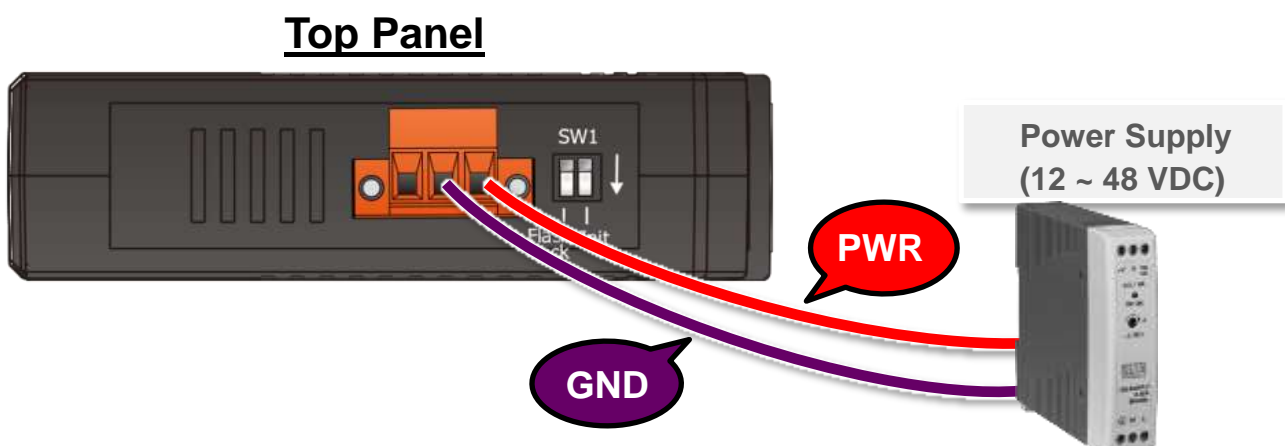
1

Connecting the Power and Host PC

- 1) Connect both the PDS-220Fx via the Fiber Optic Converter and your PC to the same sub network or the same Ethernet switch.
- 2) Short the “TxD+” to “RxD+” and “TxD-” to “RxD-” pins on the **COM2** terminal block on the PDS-220Fx for self-test.



- 3) Supply power (+12 VDC ~ +48 VDC) to the PDS-220Fx.



2 Install the VxComm Utility

The VxComm Utility can be obtained from the ICP DAS FTP site or the ICP DAS web site. The location of the download addresses are shown below:

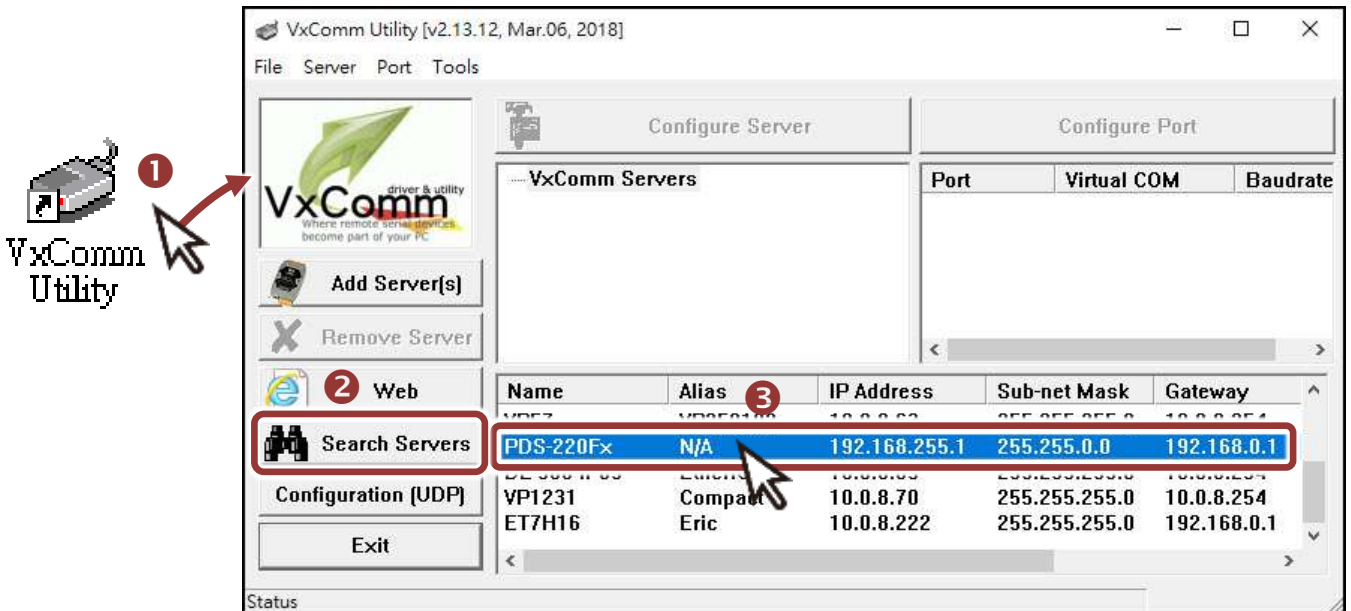


 http://ftp.icpdas.com/pub/cd/8000cd/napdos/driver/vxcomm_driver/windows/

 ftp://ftp.icpdas.com/pub/cd/8000cd/napdos/driver/vxcomm_driver/windows/

3 Configuring Network Settings

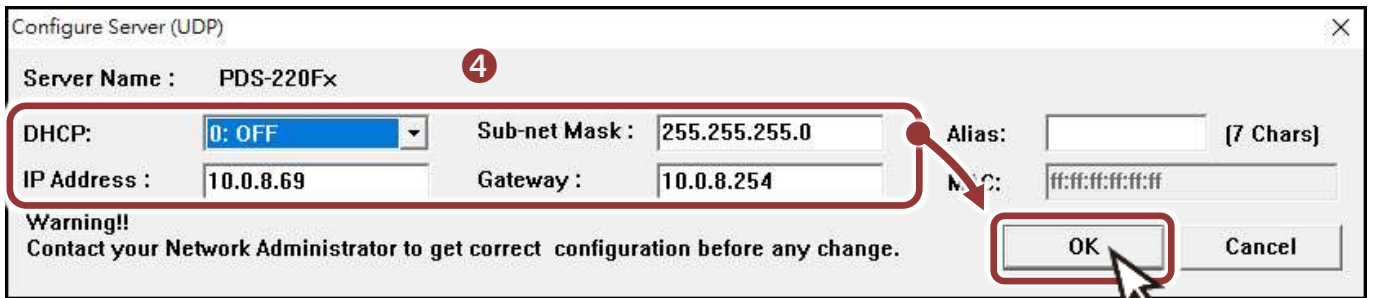
- 1) Double click the VxComm Utility shortcut on the desktop.
- 2) Click the “**Search Servers**” to search your PDS-220Fx.
- 3) Double click the **name of PDS-220Fx** to open the “Configure Server (UDP)” dialog box.



Factory Default Settings of PDS-220Fx:

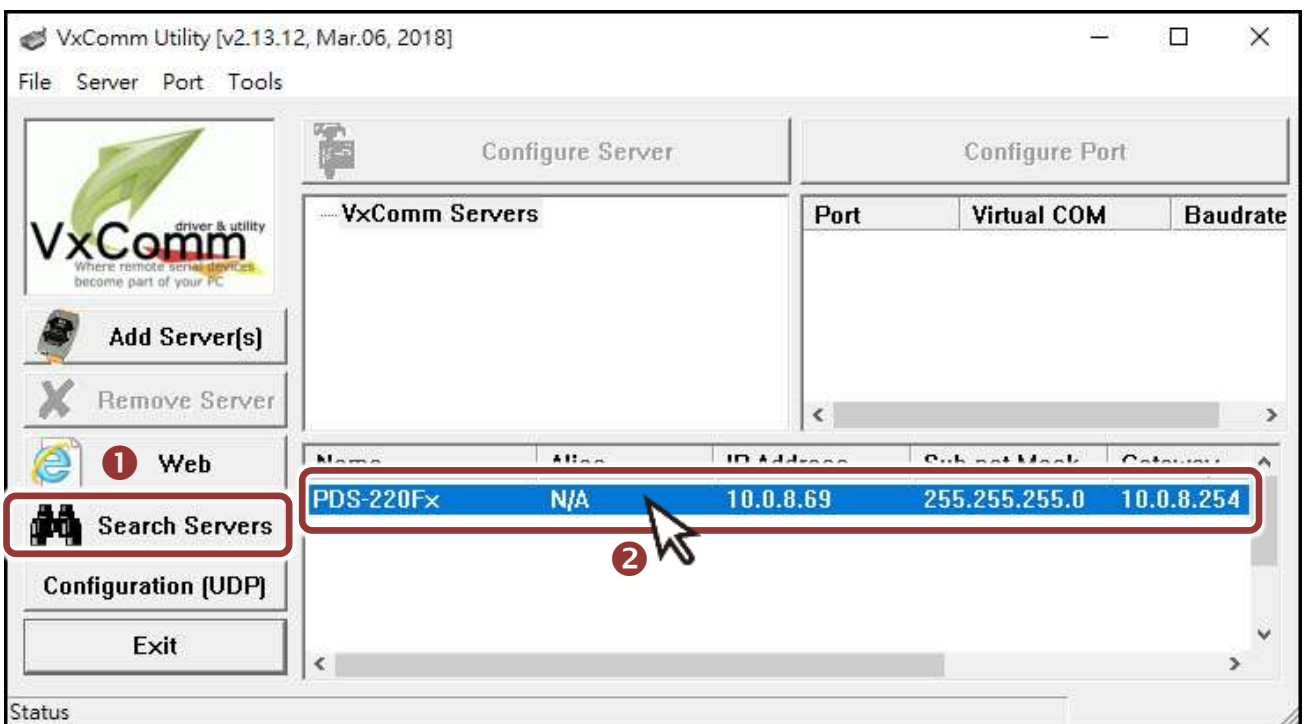
IP Address	192.168.255.1
Subnet Mask	255.255.0.0
Gateway	192.168.0.1

- 4) Contact your Network Administrator to obtain a **correct network configuration (such as IP/Mask/Gateway)**. Enter the network settings and click “OK”. **⚠ Note: The PDS-220Fx will use the new settings 2 seconds later.**



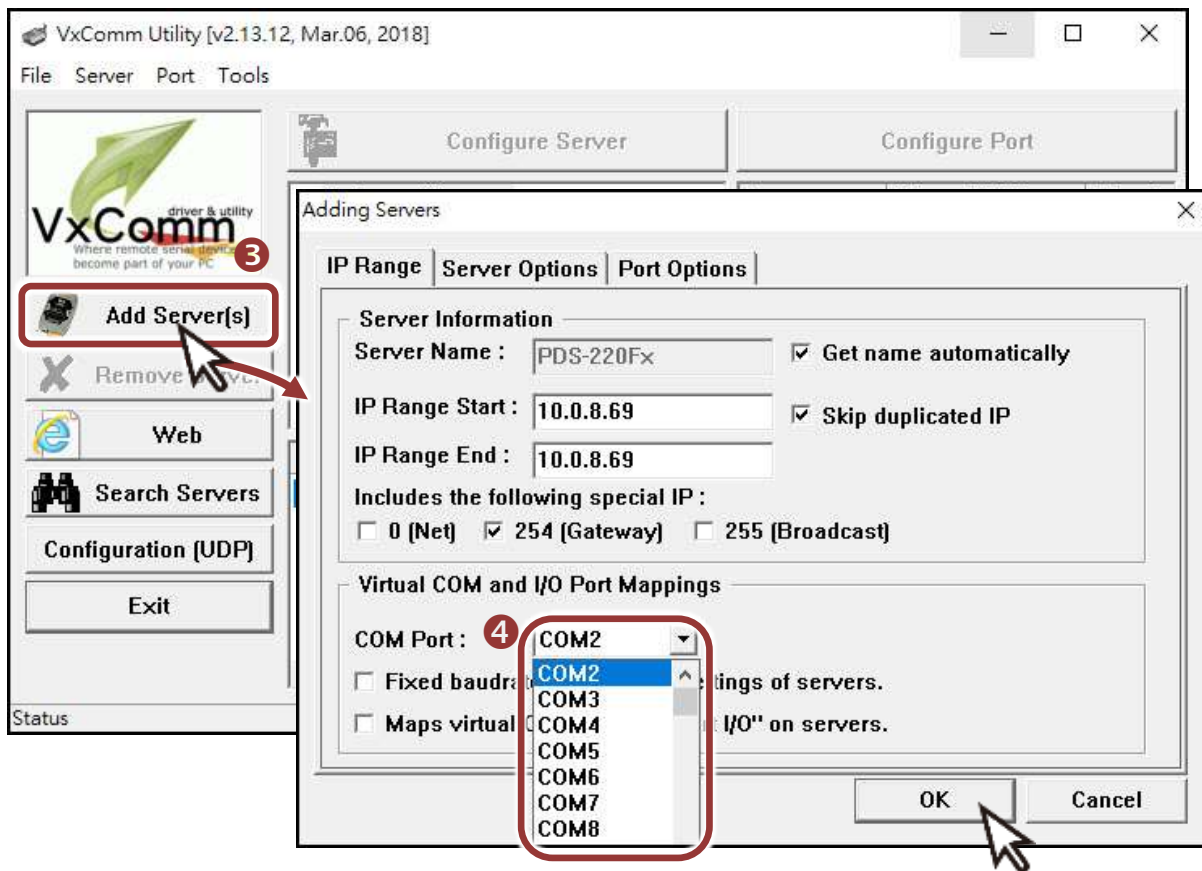
4 Configuring Virtual COM Ports

- 1) Wait 2 seconds and click “**Search Servers**” button again to ensure the PDS-220Fx is working well with new configuration.
- 2) Click the name of PDS-220Fx to select it.

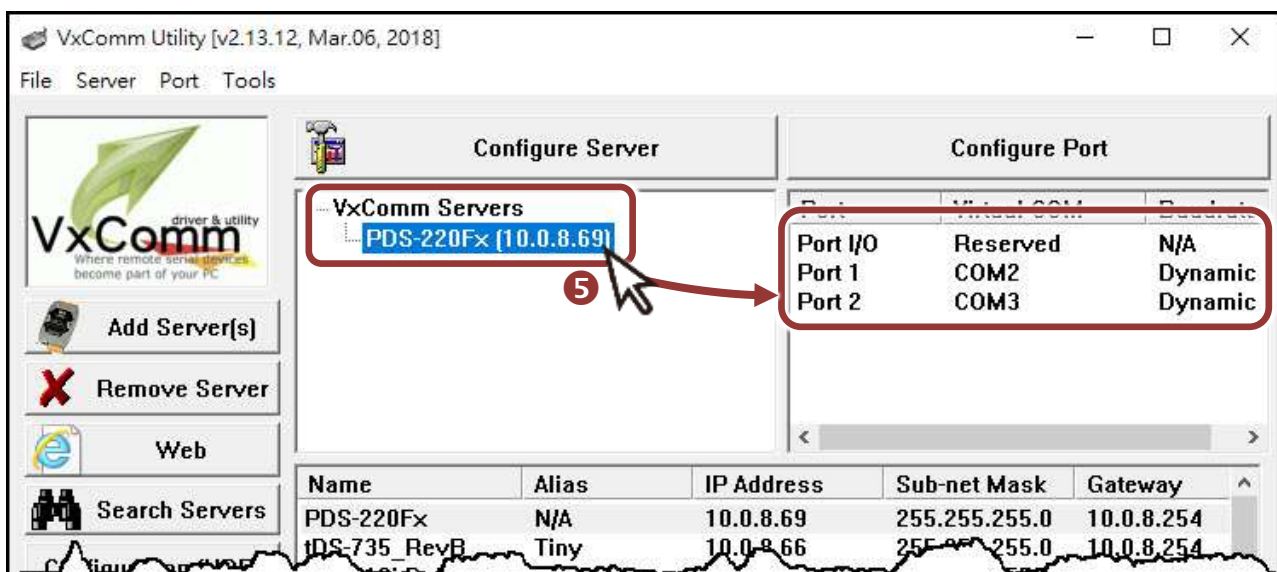


3) Click the “Add Server[S]” button.

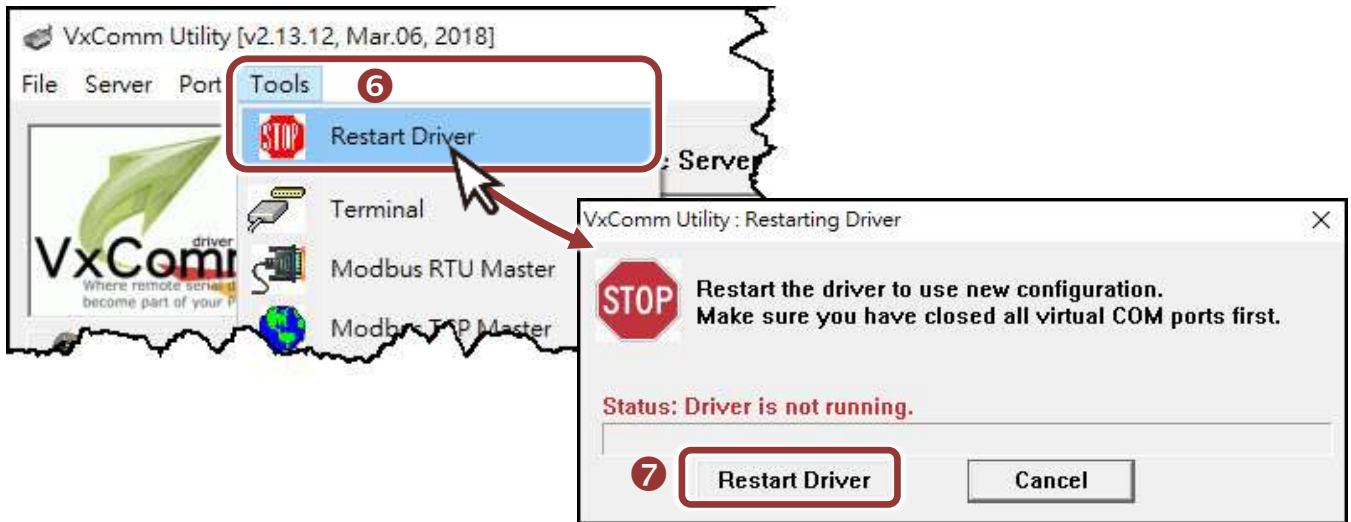
4) Assign a COM Port number and click “OK” to save your settings.



5) Click on PDS-220Fx name and check the virtual COM Port mappings on the PC.

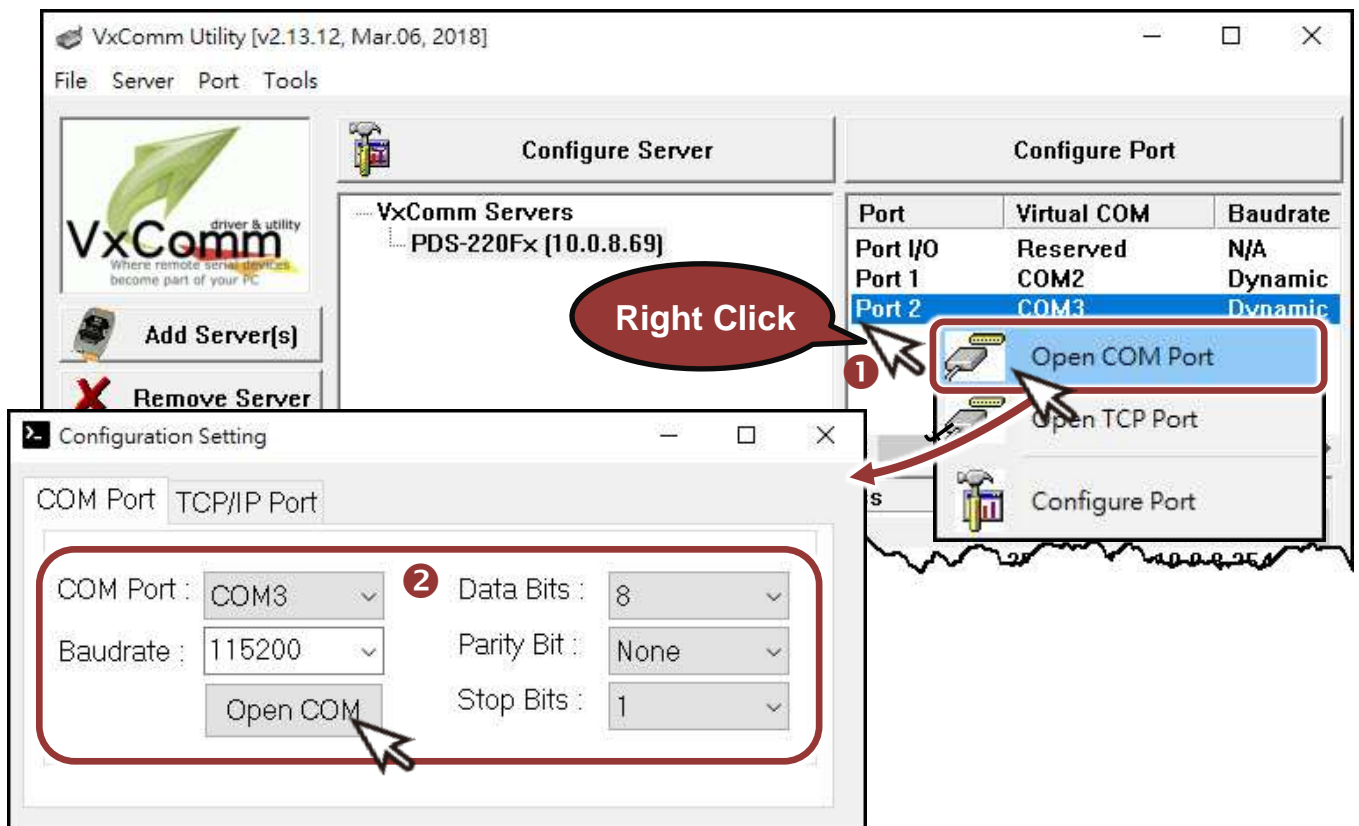


- 6) Click the “Restart Driver” item in the “Tools” menu to display the “VxComm Utility: Restarting Driver” dialog box.
- 7) Click the “Restart Driver” button.



5 Self-Test

- 1) Right click Port2 and choose the “Open COM Port” item.
- 2) Check that the configuration of the COM Port is correct and then click the “Open COM” button.



- 3) Type a string (e.g., \$01M) in the “**Send**” field.
- 4) Click the “**Hex/Text**” option in the “**Display**” section.
- 5) Click the “**Send**” button to send the message.



- 6) If a response is received, it will be displayed in the received field.



If the test is successful, then your COM port program should now be able to work with this Virtual COM Port.

Related Information

- PDS-220Fx Series Product Page:
<http://www.icpdas.com/products/Industrial/pds/pds-220fx.htm>
- Documentation:
<http://ftp.icpdas.com/pub/cd/8000cd/napdos/pds/pds-220fx/document/>
- Firmware:
<http://ftp.icpdas.com/pub/cd/8000cd/napdos/pds/pds-220fx/firmware/>
- MDR-20-24, NS-205, NS-200AF Product Page (optional):
http://www.icpdas.com/root/product/solutions/industrial_ethernet_switch/ns-205.html
http://www.icpdas.com/root/product/solutions/accessories/power_supply/mdr-20-24.html
http://www.icpdas.com/root/product/solutions/industrial_ethernet_switch/ns-200af.html

NOTE

The flash lock function is disabled for factory default settings.

User can modify the program or update the firmware. If you want to enable flash lock function, refer to **Section “SW1 (Init and Flash Lock Switch)”** of PDS-220Fx user manual.

The location of the download addresses are shown below:

<http://ftp.icpdas.com/pub/cd/8000cd/napdos/pds/pds-220fx/document/>