

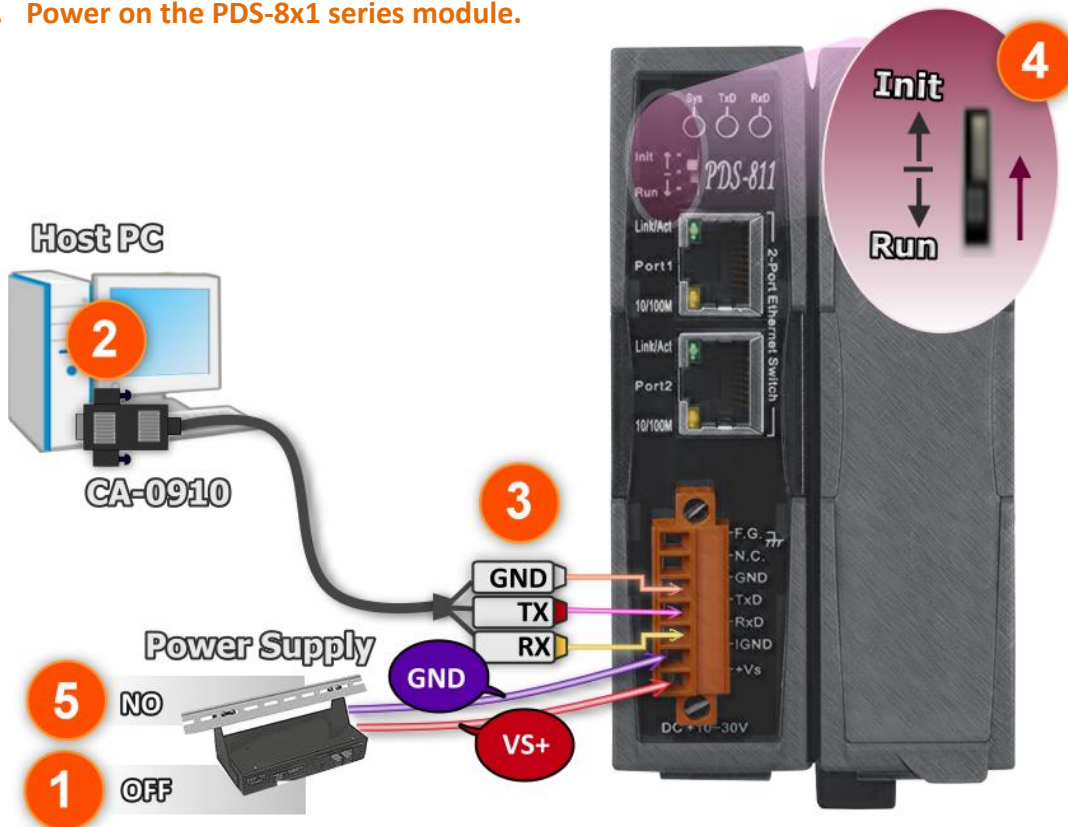
分類/Classification	<input type="checkbox"/> tDS	<input type="checkbox"/> tGW	<input type="checkbox"/> PETL/tET/tPET	<input checked="" type="checkbox"/> DS/PDS/PPDS	<input type="checkbox"/> tM-752N
	<input type="checkbox"/> I/O Card	<input type="checkbox"/> VXC Card	<input type="checkbox"/> VxComm	<input type="checkbox"/> Other	
作者/Author	Tammy	日期/Date	2014-02-12	編號/NO.	FAQ-013

Q: How to Update the MiniOS7 and Firmware for PDS-8x1 Series Modules?

A: Follow the procedure described below to update the MiniOS7 and firmware for PDS-8x1 series modules:

Step 1: Before updating the firmware, please ensure that the PDS-8x1 series module is connected with your host computer. Refer to the following steps for the details.

1. Power off the PDS-8x1 series module.
2. Connect the connector of CA-0910 download cable to your host computer.
3. Wire the CA-0910 to PDS-8x1 series module, as follows:
 - 3-1: Connect the CA-0910.TX with PDS-8x1.TxD
 - 3-2: Connect the CA-0910.RX with PDS-8x1.RxD
 - 3-3: Connect the CA-0910.GND with PDS-8x1.GND
4. Set the “Init/Run Switch” on the PDS-8x1 module to the in “Init Mode” position.
5. Power on the PDS-8x1 series module.



Step 2: Download the Firmware File of PDS-8x1 series module and then decompress it to a temp folder, for example PDS800fw.



Download the Firmware File.

The PDS-8x1 MiniOS7 and firmware files are compressed in Zip format. You can decompress the zip file by 7-Zip, WinZip, WinRAR... utilities.

Step 3: Please modify COM Port number in **7188xw.ini** file, depend on your PC COM Port that connect to PDS-8x1 series module.

For example (first parameter of the line 1 in the 7188xw.ini):

COM1 ==> C1 B115200 P0 D8 S1

COM2 ==> C2 B115200 P0 D8 S1

Double Click

1 Double Click

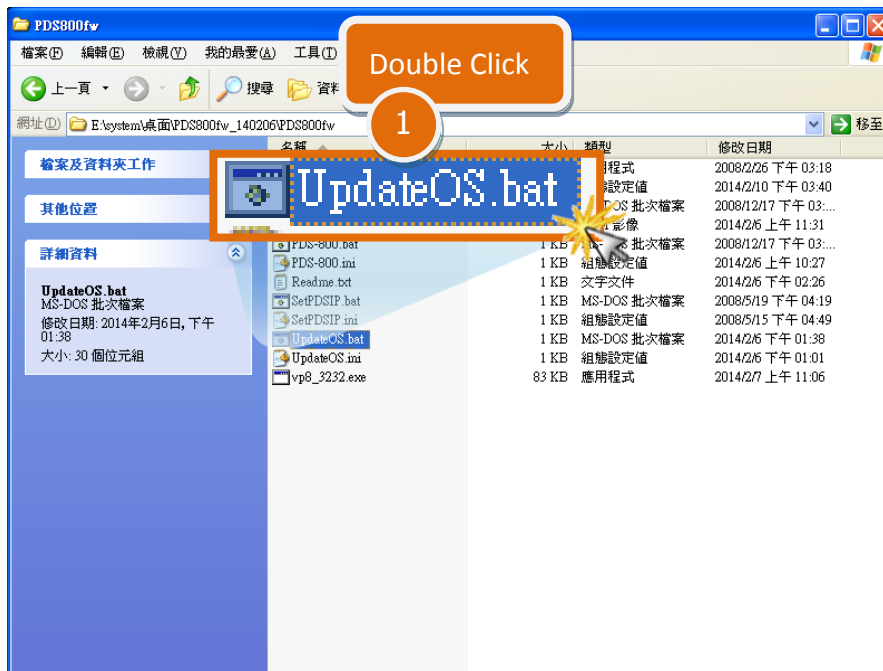
名稱	大小	類型	修改日期
7188KW.EXE	102 KB	應用程式	2008/2/26 下午 03:18
7188xw.ini	1 KB	組態設定值	2014/2/10 下午 03:39
autoexec.bat	1 KB	MS-DOS 批次檔案	2008/12/17 下午 03:...

2

C: COM Port (e.g. C6) → Modify this item.
 B: Baud Rate (e.g. B115200)
 P: Parity (e.g. P0)
 D: Data Bits (e.g. D8)
 S: Stop Bits (e.g. S1)

3 Select the "Save" item from the "File" menu to save the new configuration.

Step 4: Double click the **UpdateOS.bat** (on Windows XP/7/8) for starting **MiniOS7 update**.



Step 5: You are now ready to update the firmware. The **UpdateOS.bat** file will auto run the **7188XW.exe** utility program and shows the progress of the update.

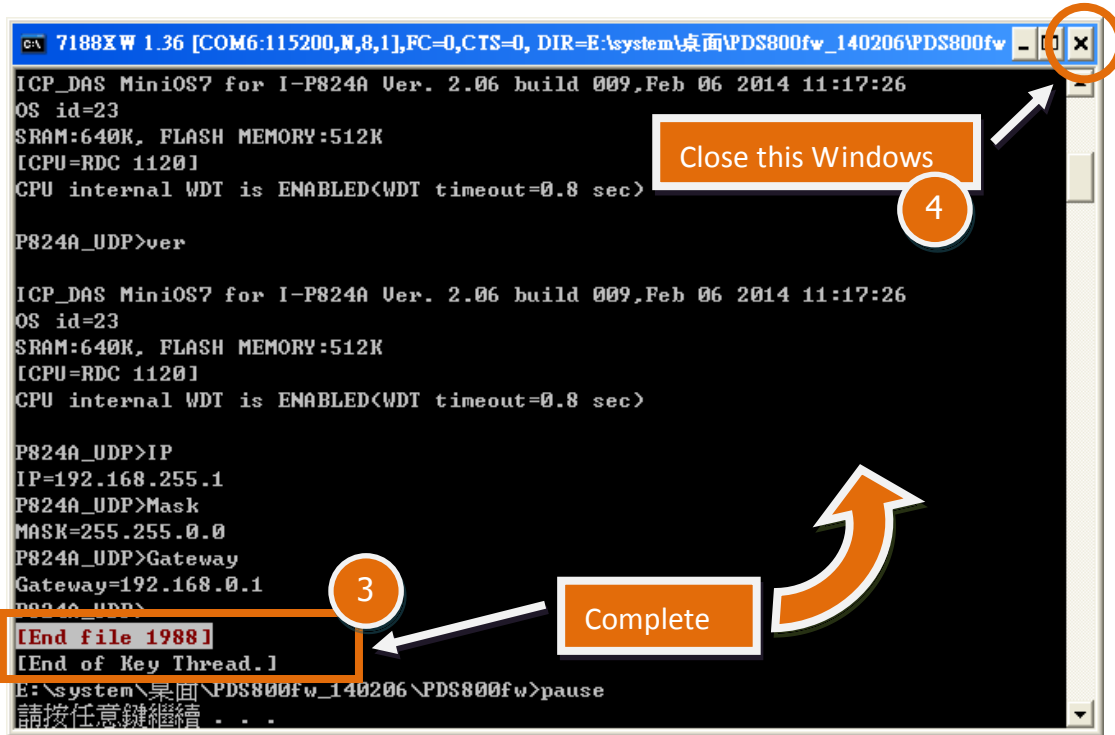
Step 6: The **7188XW.exe** utility program will then upload the **MiniOS7 file (P824A-UDP-20140206.img)** into PDS-8x1 series module automatically.

Note: Some more information are displayed out of the window, don't care.

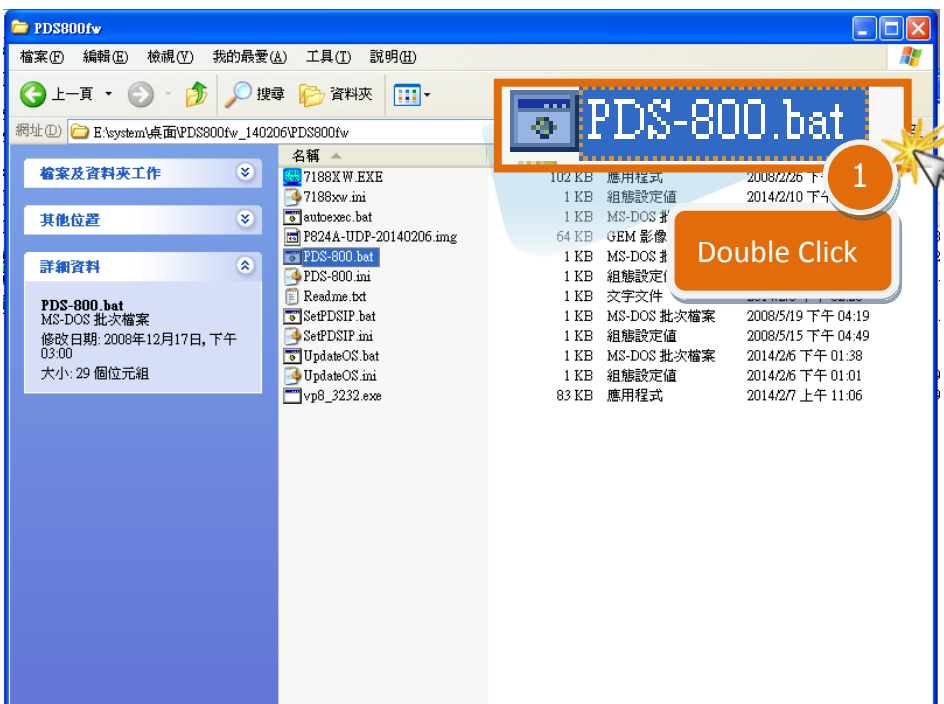
```

C:\> 7188XW 1.36 [COM6:115200,N,8,1],FC=0,CTS=0, DIR=E:\system\桌面\PDS800fw_140206\PDS800fw
original baudrate = 115200!
now baudrate = 115200!
IP 192.168.255.1
Set IP=192.168.255.1
[ReadBack]IP=192.168.255.1
P824A_UDP>Mask 255.255.0.0
Set MASK=255.255.0.0
[ReadBack]MASK=255.255.0.0\system\桌面\PDS800fw_140206\PDS800fw"
P824A_UDP>Gateway 192.168.0.1
Set GATEWAY=192.168.0.1
[ReadBack]Gateway=192.168.0.1
P824A_UDP>UPLOAD
Press ALT_E to download file!
Load file:P824A-UDP-20140206.img[crc=B9FE,0000]
Send file info. total 256 blocks
Block 47
  
```

Step 7: The MiniOS7 updated completed when display **[End file 1988]** and **[End of Key Thread.]** message. Then click the **"X"** icon on the right-top corner of the window to close it.



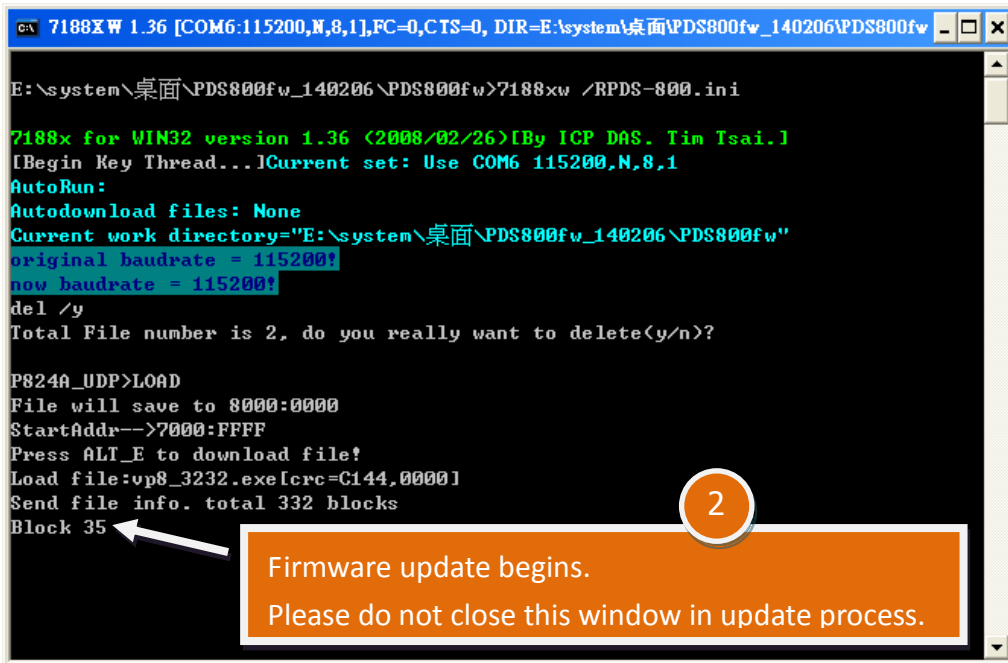
Step 8: Double click the **PDS-800.bat** (on Windows XP/7/8) for starting **firmware update**.



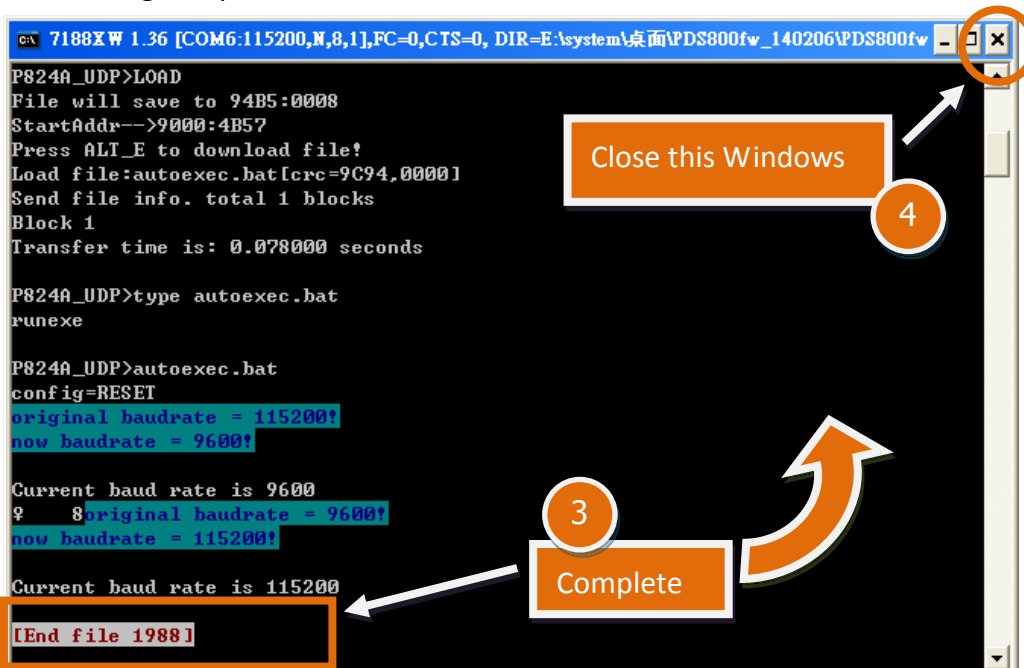
Step 9: You are now ready to update the firmware. The **PDS-800.bat** file will auto run the **7188XW.exe** utility program and shows the progress of the update.

Step 10: The **7188XW.exe** utility program will then upload the **firmware file (vp8_3232.exe)** into PDS-8x1 series module automatically.

Note: Some more information are displayed out of the window, don't care.



Step 11: The firmware updated completed when display **[End file 1988]** message. Then click the **"X"** icon on the right-top corner of the window to close it.



Step 12: Set the “Init/Run Switch” of the PDS-8x1 module to the in “Run Mode” position.



Step 13: Reboot the PDS-8x1 module.

