

分類/Classification	<input type="checkbox"/> tDS	<input type="checkbox"/> tGW	<input type="checkbox"/> PETL/tET/tPET	<input checked="" type="checkbox"/> DS/PDS/PPDS	<input type="checkbox"/> tM-752N
	<input type="checkbox"/> I/O Card	<input type="checkbox"/> VXC Card	<input type="checkbox"/> VxComm	<input type="checkbox"/> Other	
作者/Author	Tammy	日期/Date	2014-01-23	編號/NO.	FAQ-011

Q: How to configure the PDS-700 module as a TCP Client?

A: Follow the procedure described below:

Step 1: Confirm that the Ethernet connection and the PDS-700 series module are functioning correctly. For detailed information regarding how to install, configure and operate your PDS-700 series module, refer to the PDS-700 Quick Start Guide, which can be downloaded from:



[Download the Quick Start Guide](#)

Step 2: Run the VxComm Utility to search for any PDS-700 modules connected to the network, and then click the name of the PDS-700 module to select it.

Step 3: Click the “Web” button to log in to the web configuration pages for the PDS-700 module. (Or enter the URL address of the PDS-700 in the browser address bar.)

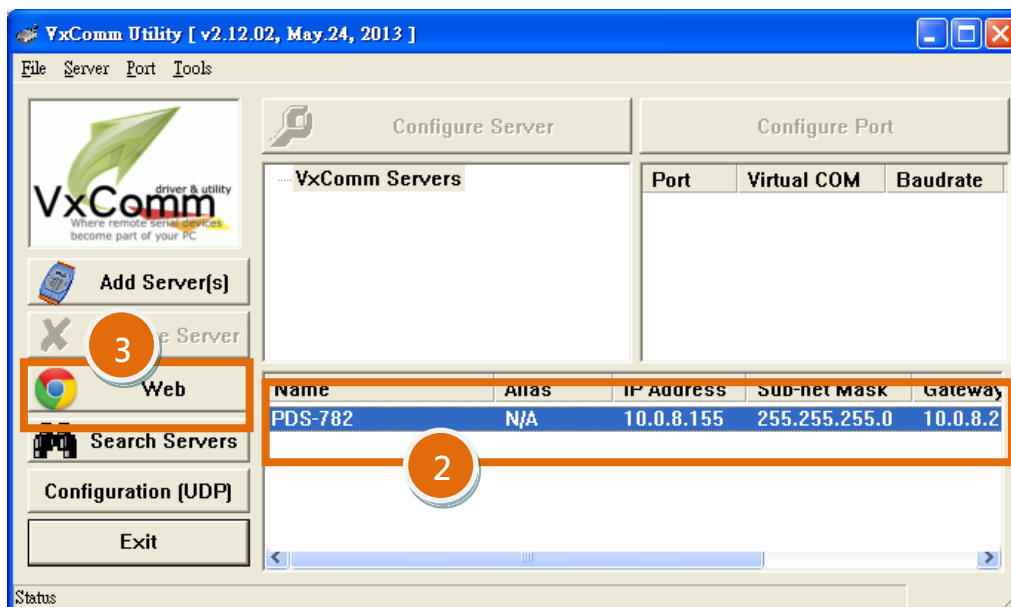


Figure 1-1

Step 4: Check that your firmware version is **v3.2.32 [Oct 07 2013] or later**.

Note that if your firmware version is earlier than v3.2.32 [Oct 07 2013], the firmware must be updated to the latest version. For detailed information regarding the firmware update process, refer to the PDS-700 firmware update documentation, which can be downloaded from:



[Download the PDS-700 firmware update documentation](#)

The screenshot shows a web browser window titled 'PDS-782 Setup Page' with the address bar displaying '10.0.8.155'. The page content is titled 'PDS-782 Firmware Information' and features a table of device information. A red box highlights the 'OS Library version' row, which contains the text 'v2.12 [May 02 2013]'. A red circle with the number '4' is placed over the 'OS Library version' text in the table.

Device Information	
Module name	PDS-782
Alias name	457
VCOM3 Firmware version	v3.2.32[Oct 07 2013]
OS version	v 2.2.24[Apr 19 2010]
OS Library version	v2.12 [May 02 2013]
TCP/IP Library version	1.28 [May 22 2013]
Free Memory (bytes)	121696

Figure 1-2

Step 5: Click the **“COM Port Settings”** tab to log in to the **Configure COM PORT** page.

Step 6: Select the appropriate **COM Port, Baud Rate and Data Format** settings from the relevant drop down options. The following is an example:

Port (COM0 for All PORTS) **“COM1”**, Baud Rate **“9600”**, Data Bits **“8”**, Parity **“None”** and Stop Bits **“1”**.

Step 7: Check the **“Save current settings to EEPROM”** and **“Apply current settings”** checkbox items, and then click the **“SET COM PORT”** button to complete the configuration.

Step 8: Click the **“Set Remote VCOM3 connection”** link to log in to the **PDS-700 Remote VCOM3 Connection Setup Page**.

※ Refer to [Figure 1-3](#) for an illustration of how to perform steps 5 to 8 described above.

Figure 1-3

Step 9: Select the second settings item to configure the TCP/IP connection function. The following is an example:

Add COM "1" → Enter the **COM Port number** in the "ADD COM" field. The actual COM Port number depends on the COM Port used by your PDS-700.

connect to IP= "10.0.8.18" → Enter the **IP address of the Slave Device** in the "connect to IP" field.

port= "10001" → Enter the **TCP Port of the Slave Device** in the "port" field.

Step 10: Click the **"Submit"** button to complete the configuration.

✘ Refer to [Figure 1-4](#) for an illustration of how to perform steps 9 and 10 described above.

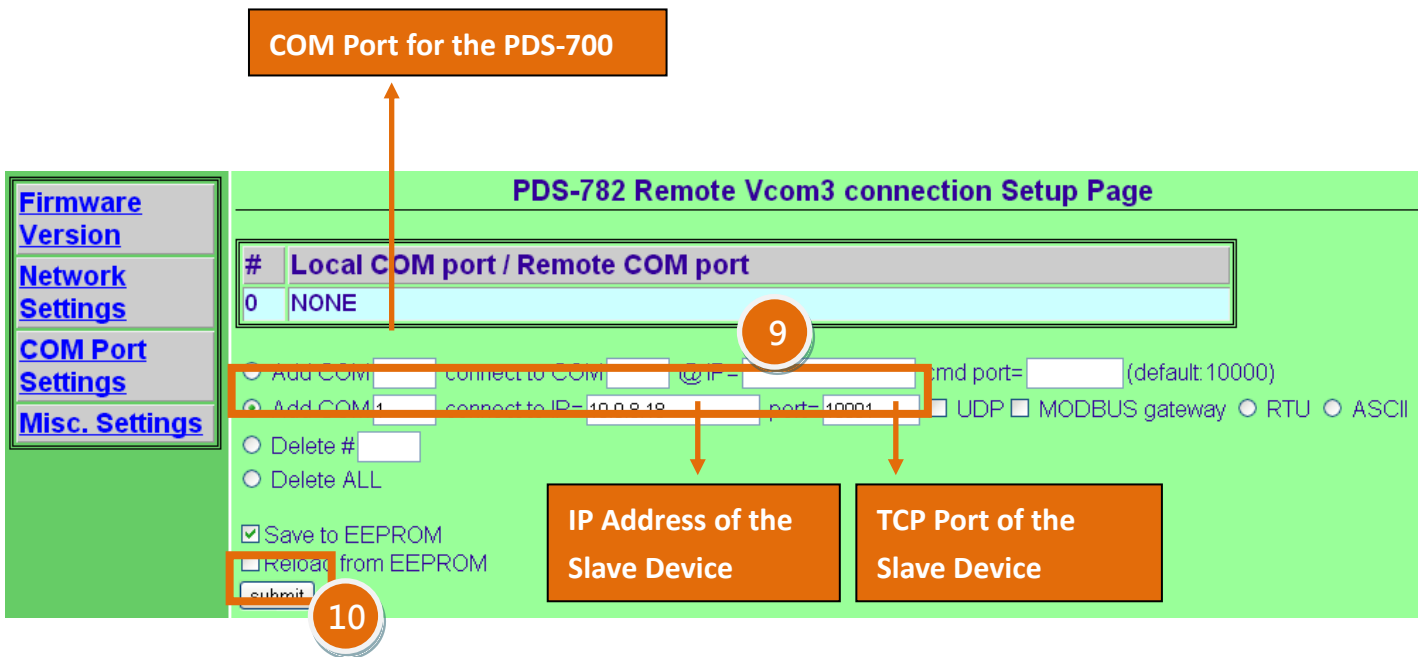


Figure 1-4

Step 11: Confirm that the TCP/IP connection settings are correct.

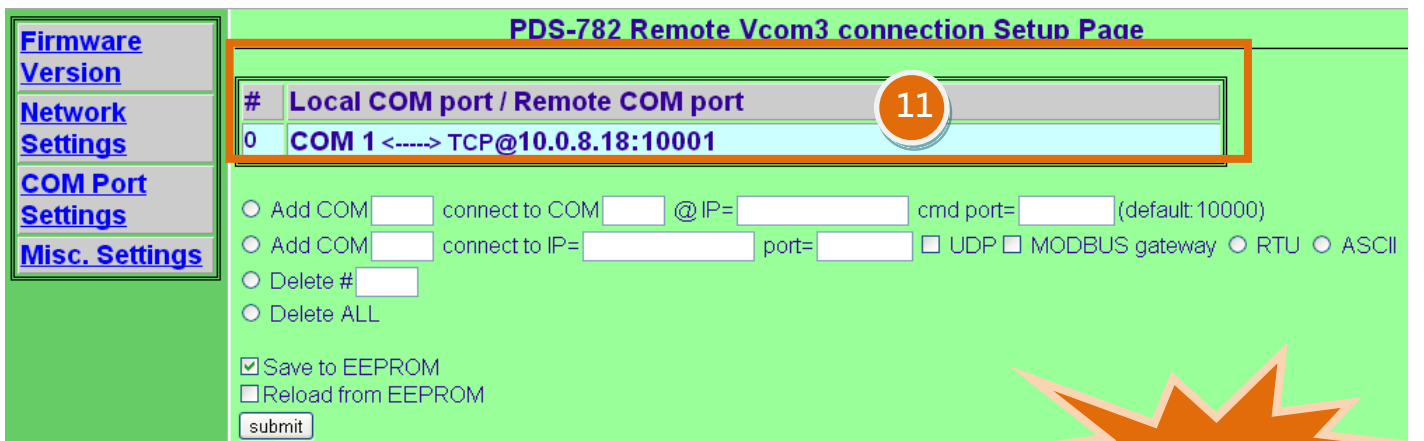


Figure 1-5



Step 12: **Reboot** the PDS-700 module to complete the configuration.