

Classification	NAPOPC_ST FAQ				No.	1-012-E	
Author	Eva	Version	1.0.0	Date	2014/8/14	Page	1/3

How to import a CSV file to create a NAPOPC_ST project based on the Modbus TCP?

Applies to :

Platform	OS version	NAPOPC version
PC	Windows 7 32 bits Professional	NAPOPC_ST v3.54

NAPOPC_ST DA Server provides a new function to import a CSV file to quickly create a NAPOPC_ST project based on the Modbus TCP (applies to version v3.54 or after). This FAQ describes this function and its configuration.

The Steps:

1. Edit a CSV File

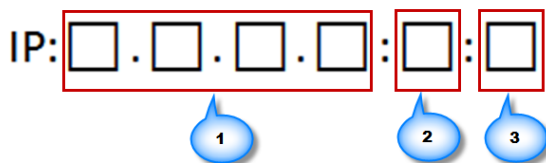
User can edit a CSV file using a text editor (or software), such as Notepad or Wordpad, or a spreadsheet software, such as Microsoft Excel. Please follow the file format listed below to edit the contents, including separate the column data by a comma "," and save the file with the extension file name ".CSV".

Format Example For The CSV File:

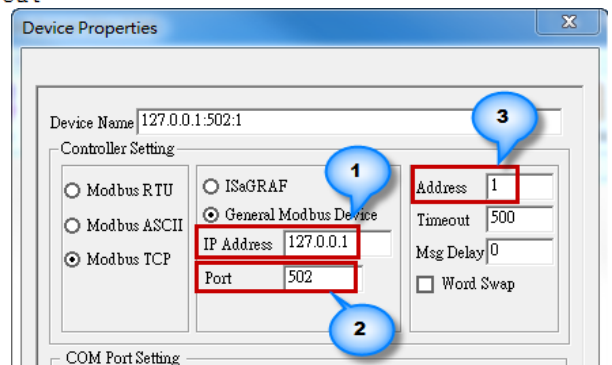
The file name must be *.csv, the first row is for the column title name, the column data are separated by a comma, and every row is to set the Device information. For example:

```
IP,GroupName,TagName,Address,Function,DataType
127.0.0.1:502:1,,G11R11_ACM_CURPOW_STS,1,1X,Bool
127.0.0.1:502:1,a1,G11R11_ACM_BAKPOW_STS,2,1X,Bool
192.168.1.6:502:1,,G12R11_B28V_CURPOW_STS,1,4X,Float
192.168.1.6:502:1,b1,G12R11_B28V_BAKPOW_STS,3,4X,Float
192.168.1.6:502:1,,G12R11_B120V_CURPOW_STS,5,4X,Float
192.168.1.6:502:1,b2,G12R11_B120V_BAKPOW_STS,7,4X,Float
192.168.1.6:502:2,,G12R11_B120V_BAKPOW_STS,9,4X,Float
```

Note 1: IP: IP Address, Port, and Address.



Note 2: GroupName: if blank, means the Tag belongs to the Device.



Classification	NAPOPC_ST FAQ				No.	1-012-E	
Author	Eva	Version	1.0.0	Date	2014/8/14	Page	2/3

Descriptions For The Column:

```

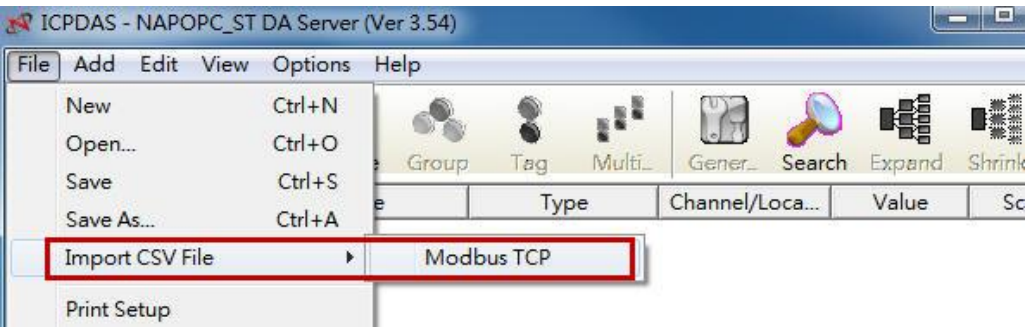
IP,GroupName,TagName,Address,Function,DataType
127.0.0.1:502:1,,G11R11_ACM_CURPOW_STS,1,1X,Bool
127.0.0.1:502:1,a1,G11R11_ACM_BAKPOW_STS,2,1X,Bool
192.168.1.6:502:1,,G12R11_B28V_CURPOW_STS,1,4X,Float
192.168.1.6:502:1,b1,G12R11_B28V_BAKPOW_STS,3,4X,Float
192.168.1.6:502:1,,G12R11_B120V_CURPOW_STS,5,4X,Float
192.168.1.6:502:1,b2,G12R11_B120V_BAKPOW_STS,7,4X,Float
192.168.1.6:502:2,,G12R11_B120V_BAKPOW_STS,9,4X,Float

```

Title	Descriptions	
IP	Device IP Address, Port, Address; e.g., 127.0.0.1:502:1	
GroupName	Group name (If blank, means the Tag directly belongs to Device.)	
TagName	Tag name	
Address	Modbus address	
Function	0X	Coil Status, Modbus instructions 01, 05 and 15
	1X	Input Status, Modbus instruction 02
	3X	Input Register, Modbus instruction 04
	4X	Holding Register, Modbus instructions 03, 06 and 16
DataType	bool	Tag data type: Boolean
	short	Tag data type: 2 bytes Integer
	long	Tag data type: 4 bytes Integer
	float	Tag data type: 4 bytes Floating Point
	word	Tag data type: 2 bytes unsigned Integer
	dword	Tag data type: 4 bytes unsigned Integer

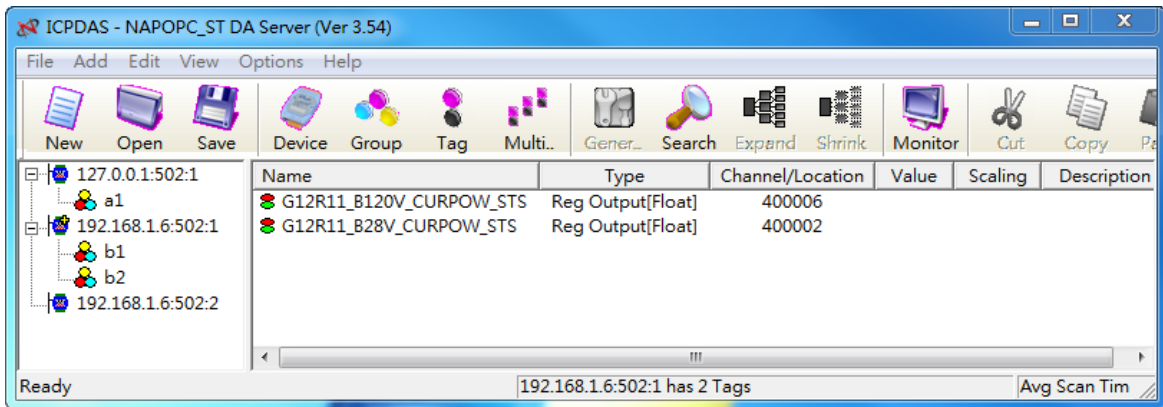
2. Import The CSV File

In the NAPOPC_ST Server, click the menu bar **File > Import CSV File > Modbus TCP...**



Classification	NAPOPC_ST FAQ				No.	1-012-E	
Author	Eva	Version	1.0.0	Date	2014/8/14	Page	3/3

Select the CSV file pre-edited (in the step 1) and click “open” to import a NAPOPC_ST project based on the Modbus TCP.



Double click the Device name (e.g., “127.0.0.1:502:1”) to view the project. The NAPOPC_ST project based on the Modbus TCP is created automatically.

