

# PnP Driver Installation

---

## Plug & Play Driver Installation Manual For AD/DA, DI/DO Cards

[For Windows 95/98/2000/XP]

### Warranty

All products manufactured by ICP DAS are warranted against defective materials for a period of one year from the date of delivery to the original purchaser.

### Warning

ICP DAS assumes no liability for damage consequent to the use of this product. ICP DAS reserves the right to change this manual at any time without notice. The information furnished by ICP DAS is believed to be accurate and reliable. However, ICP DAS assumes no responsibility for its use, or for any infringements of patents or other rights of third parties resulting from its use.

### Copyright

Copyright 2000 by ICP DAS. All rights are reserved.

### Trademark

The names used for identification only may be registered trademarks of their respective companies.

### License

The user can use and backup this software **on a single machine**. The user may not reproduce, transfer or distribute this software, or any copy, in whole or in part.

## Table of contents

1	Introduction .....	3
2	PCI PnP for Win95/98.....	4
3	PCI PnP for Win2000/XP .....	11
4	ISA PnP for Win2000/XP .....	15

# 1 Introduction

This manual describes how to install the Plug and Play Information file (PnP Driver) of AD/DA, DI/DO add-on cards (PCI and ISA bus) on Windows 95/98/2000/XP.

All of the products (PCI bus) have their own PnP information file (PnP Driver). [Windows 95/98 and Windows 2000/XP will refer to this information file in order to allocate the resource for the device. Thus, the user must install the correct information file \(PnP Driver\) for it to work correctly.](#) All of the PnP drivers have similar steps for installation. And this manual uses the PCI-TMC12 or PIO series card as an example. For other PCI cards, please refer to these steps and select the appropriate PnP Driver to install.

To find out the PnP Information file (PnP Driver) for the specified device, please refer to the file "Readme.TXT" which is include with the Development Toolkit for the specified device.

For example:

```
|--\PioDio
  |--\Win95
  |   |--\Inf           → PnP Driver
  |   .....
  |   .....
  |
  |--\Win2000
  |   |--\Inf           → PnP Driver
```

## 2 PCI PnP for Win95/98

Step 2-1. Power off your computer.

Step 2-2. Plug the PCI DAQ card onto main-board.

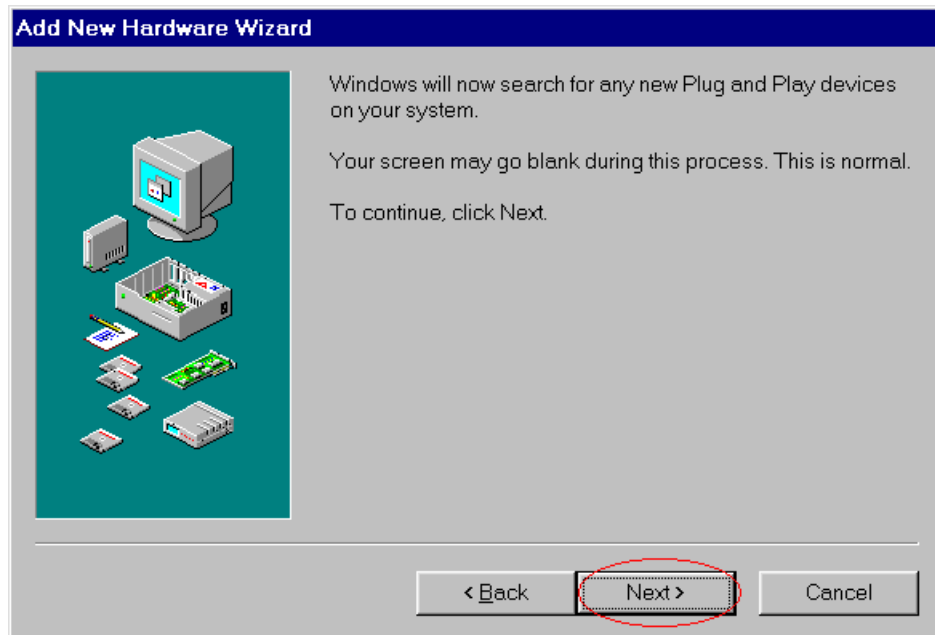
Step 2-3. Power on your computer.

Step 2-4. The “Add New Hardware Wizard” window pops up. The user also can launch the window “Add New Hardware Wizard” by click the icon “Add New Hardware” from the folder “Control Panel”.

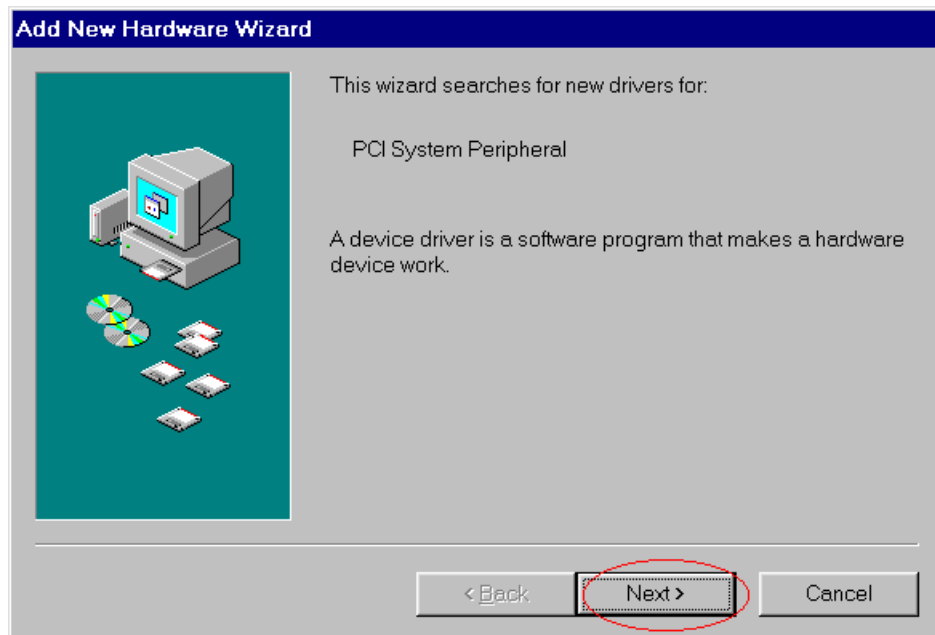
Step 2-5. Click the “Next >” button.



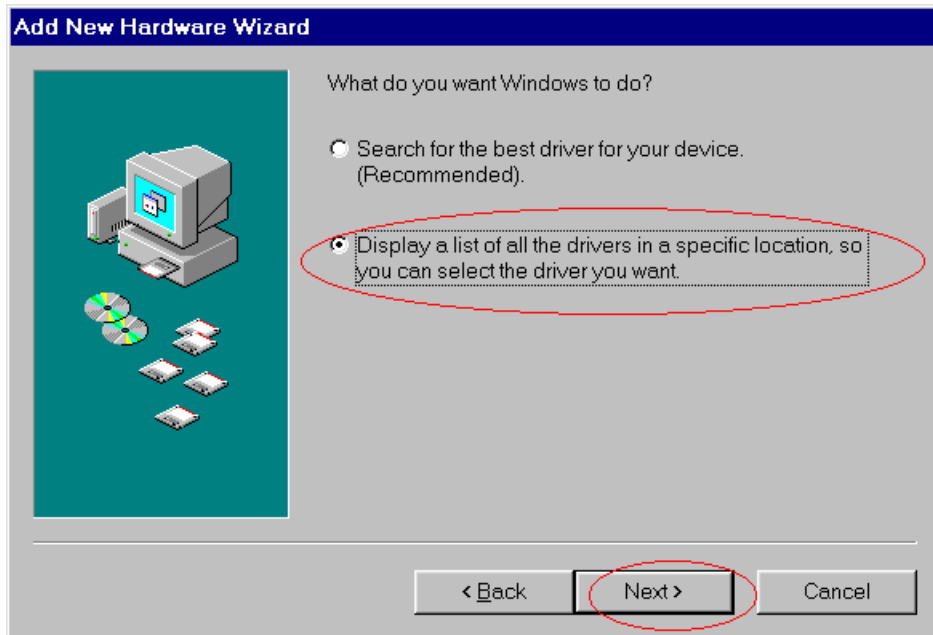
Step 2-6. Click the “Next >” button.



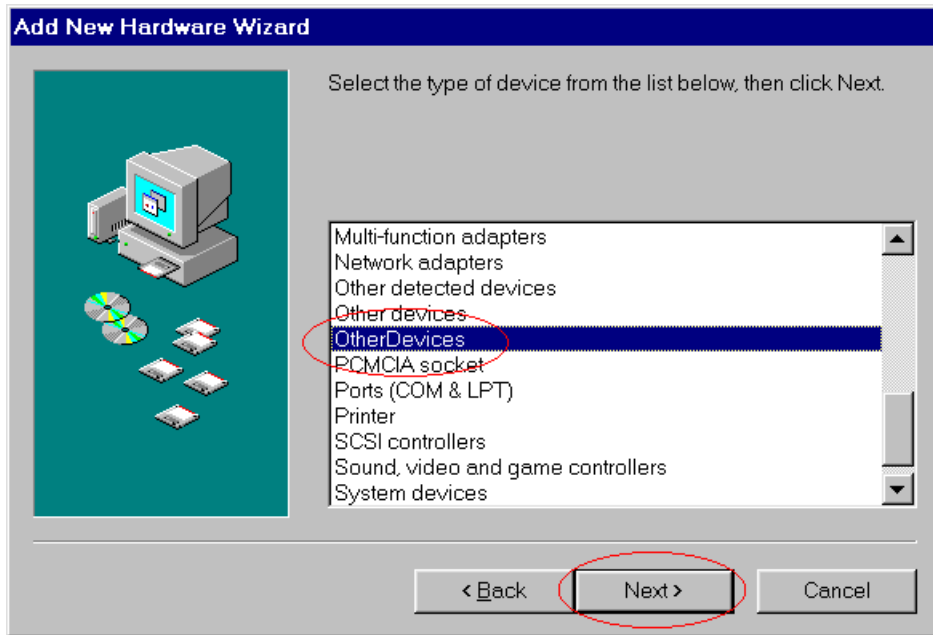
Step 2-7. Click the “Next >” button.



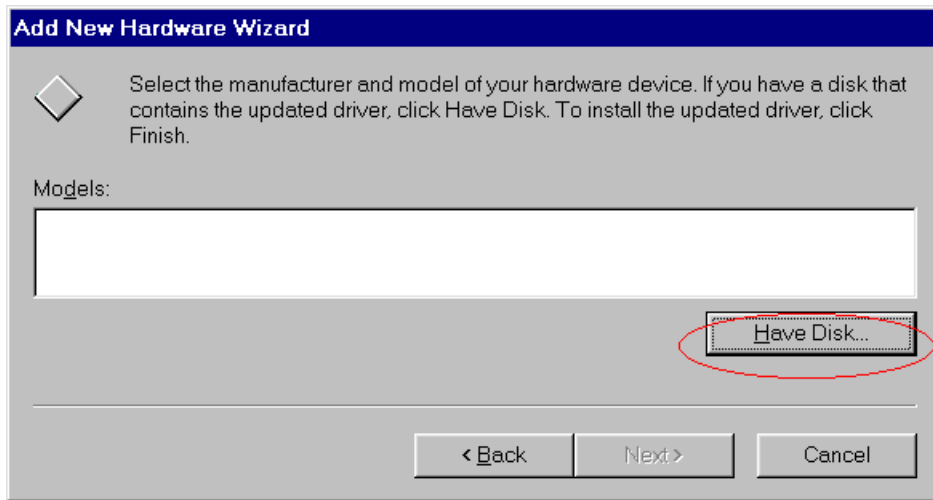
Step 2-8. Select the second item and then click the “Next >” button.



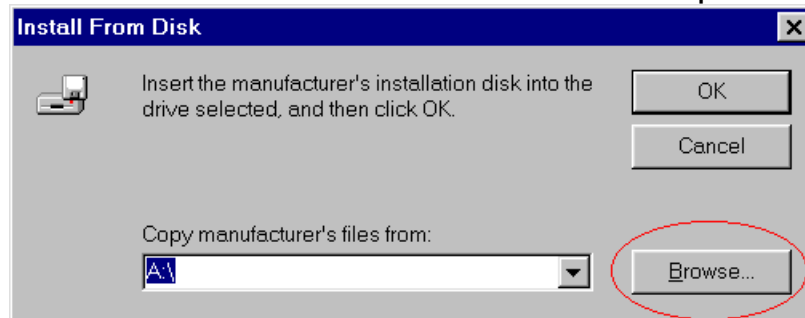
Step 2-9. Select the item “OtherDevices” and click “Next >” button.



Step 2-10. Click the “**Have Disk...**” button.

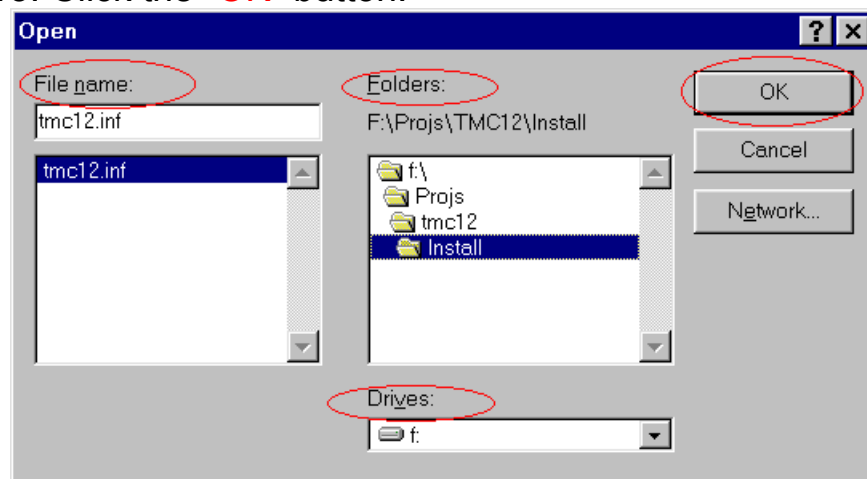


Step 2-11. Click the button “**Browse...**” to select the path of the driver.



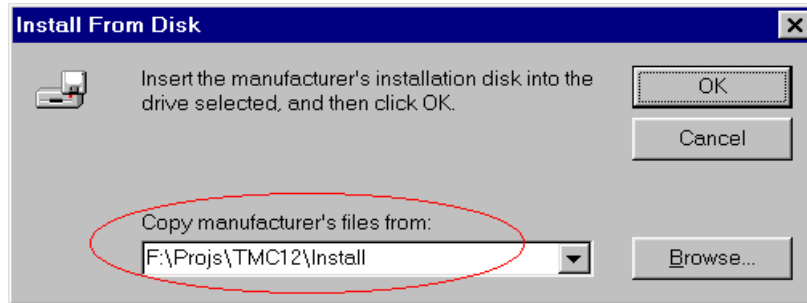
Step 2-12. Change the “**Drives**”, “**Folders**” and **select the correct .INF file**. These depend on the device driver that you want to use.

Step 2-13. Click the “**OK**” button.



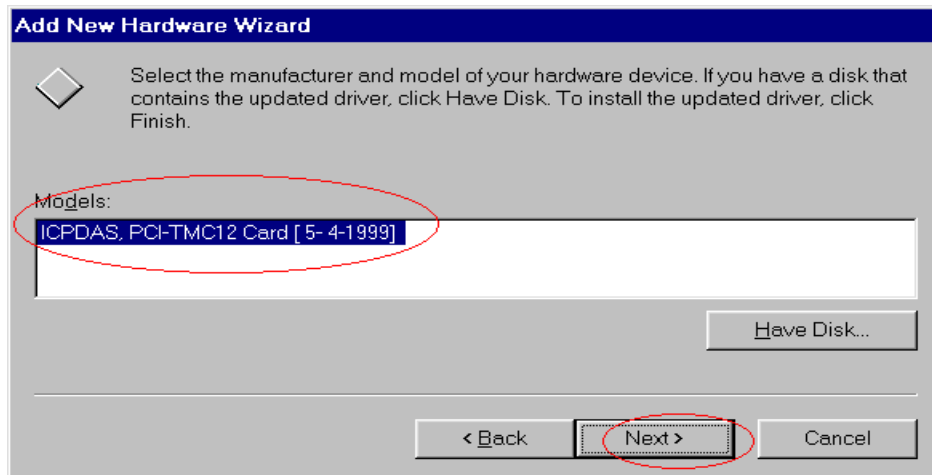
Step 2-14. Make sure that the path is correct for the PCI DAQ card.

Step 2-15. Click the “OK” button to proceed to the next step.



Step 2-16. Select the correct driver (Models) for the PCI DAQ card.

Step 2-17. Click the “Next >” button to proceed to the next step.





Step 2-18. Click the “Next >” button.

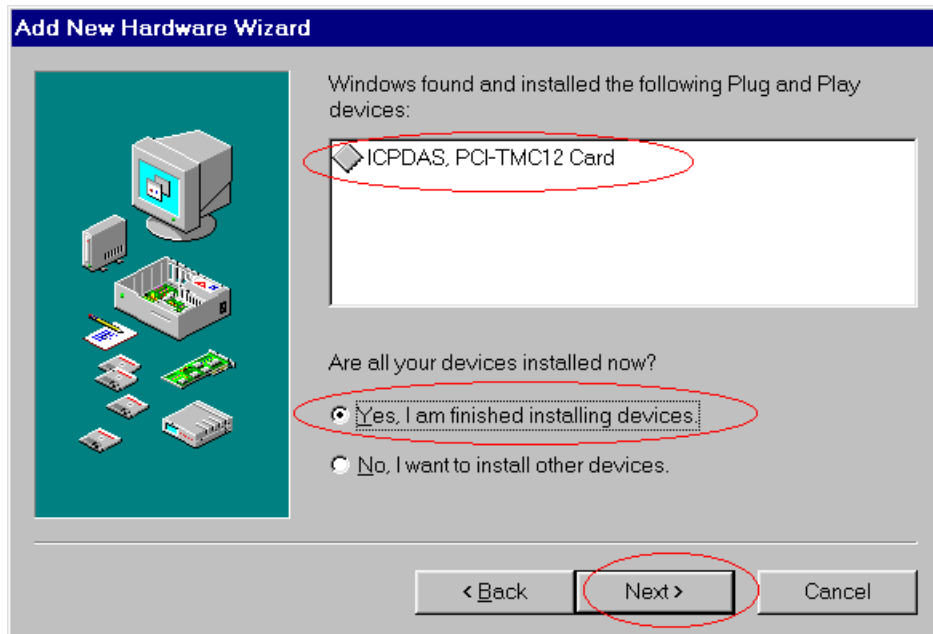


Step 2-19. Click the “Finish” button.



Step 2-20. Select the item “**Yes, I am finished installing devices.**”.

Step 2-21. Click the “**Next >**” button.



Step 2-22. Click the “**Finish**” button.



## 3 PCI PnP for Win2000/XP

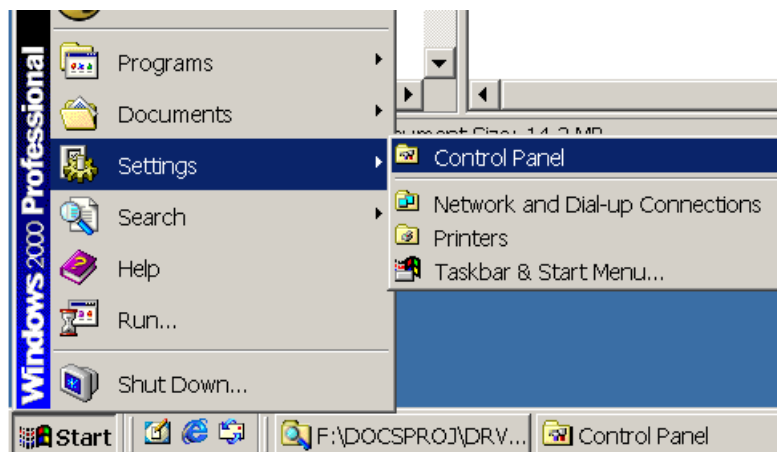
Step 3-1. Power off your computer.

Step 3-2. Plug the PCI DAQ card onto main-board.

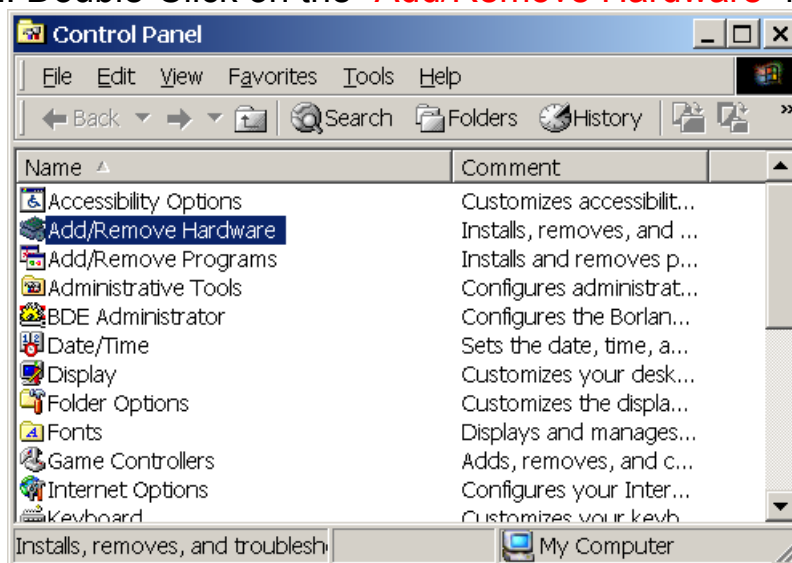
Step 3-3. Power on your computer.

Step 3-4. The “**Add New Hardware Wizard**” window pops up.

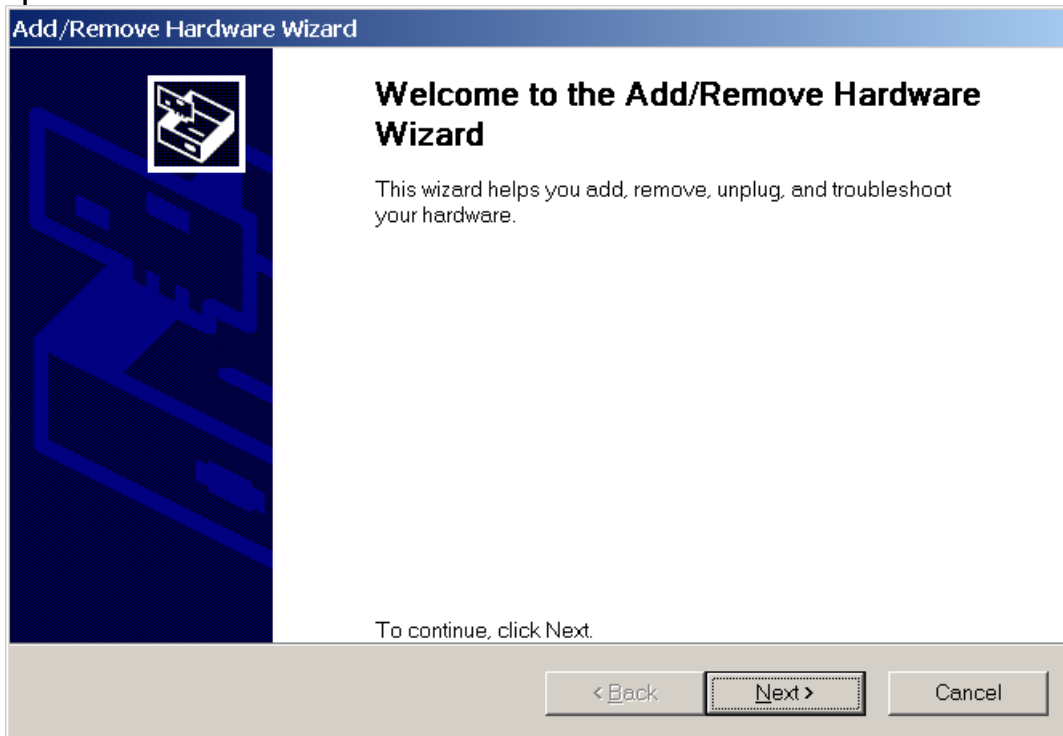
Step 3-4-1. The user also can launch the window “**Add New Hardware Wizard**” by click “Start / Settings / Control Panel”.



Step 3-4-2. Double-Click on the “**Add/Remove Hardware**” item.

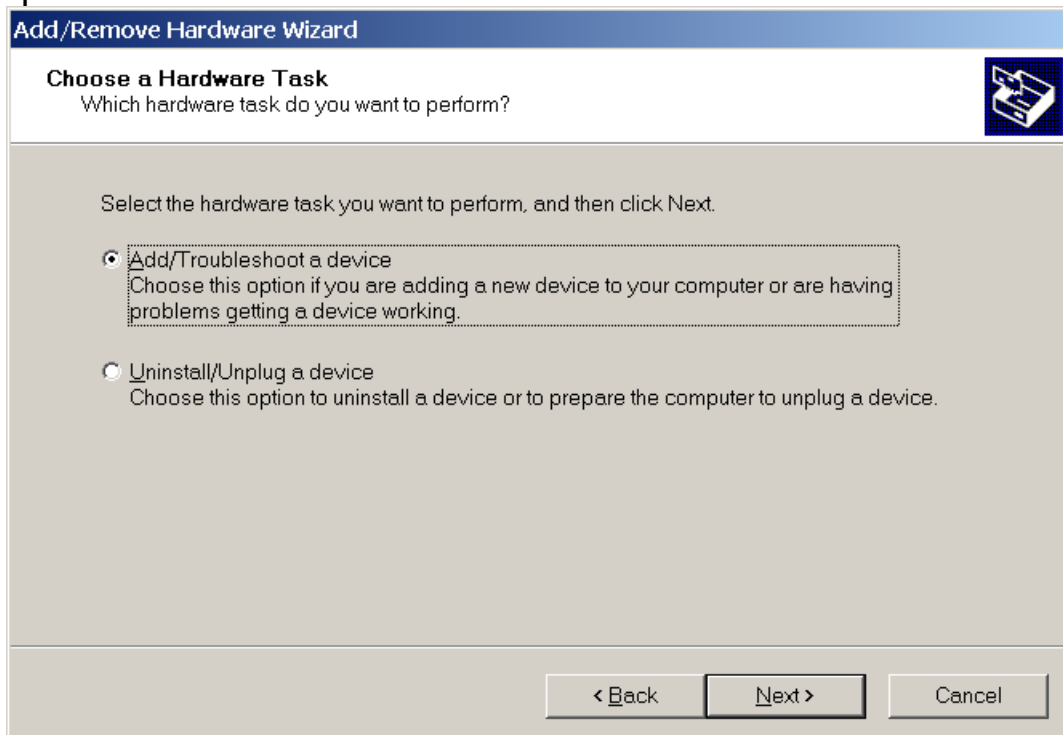


Step 3-5. Click “Next >” button.



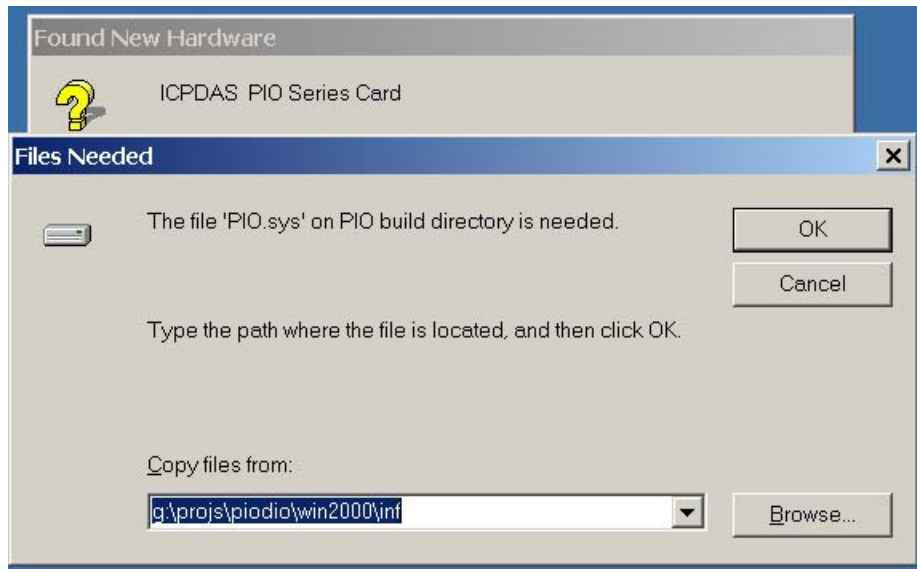
Step 3-6. Select the “Add/Troubleshoot a device” item.

Step 3-7. Click the “Next >” button.

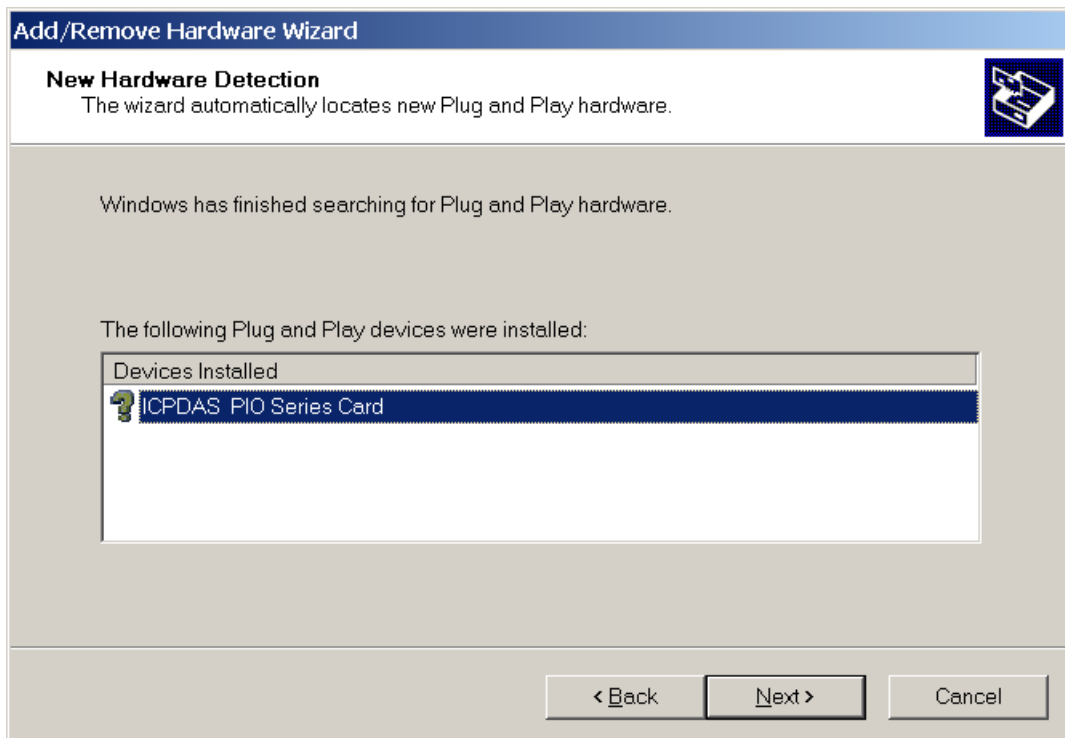


Step 3-8. Click the “**Browse...**” button to select the proper directory in which to store the PnP Information file.

Step 3-9. Click the “**OK**” button.



Step 3-10. Select the proper device and click “**Next >**”.



Step 3-11. Click “**Finish**” to finish this process.



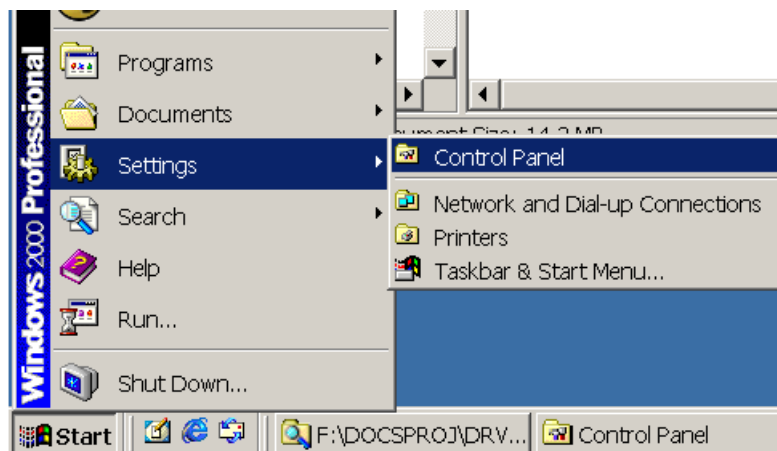
## 4 ISA PnP for Win2000/XP

Windows 2000/XP supports the Plug & Play mechanism to allocate resources. But the hardware of the ISA AD/DA and DI/DO card don't support PnP. In this case, Windows 2000/XP will not be able to detect the ISA AD/DA and DI/DO card automatically.

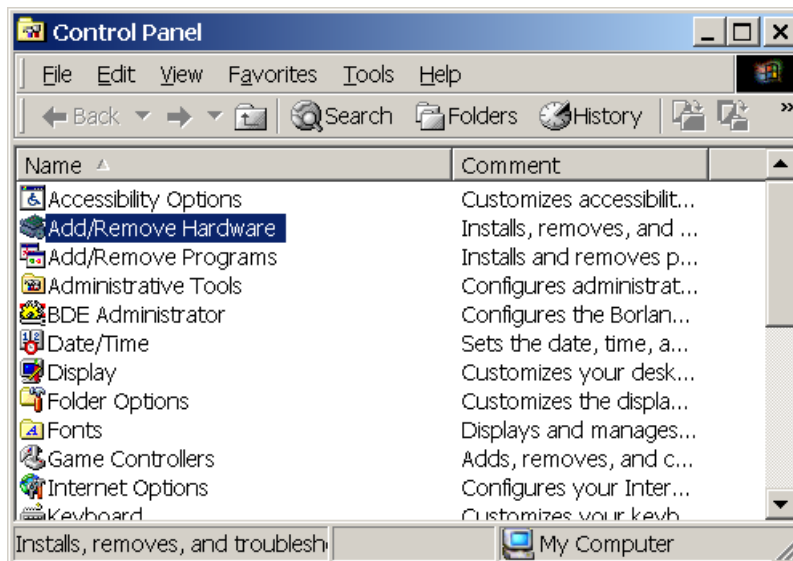
For allocating resources correctly, we provide a PnP information file (\*.INF) for the ISA AD/DA and DI/DO card. The ISA AD/DA and DI/DO card use the information file to request the resources from Windows 2000/XP.

It is recommended to first install the PnP information file and then set the requested resources correctly. After the resources have been allocated, set the jumper or switch of the ISA AD/DA and DI/DO card to match the allocated resources.

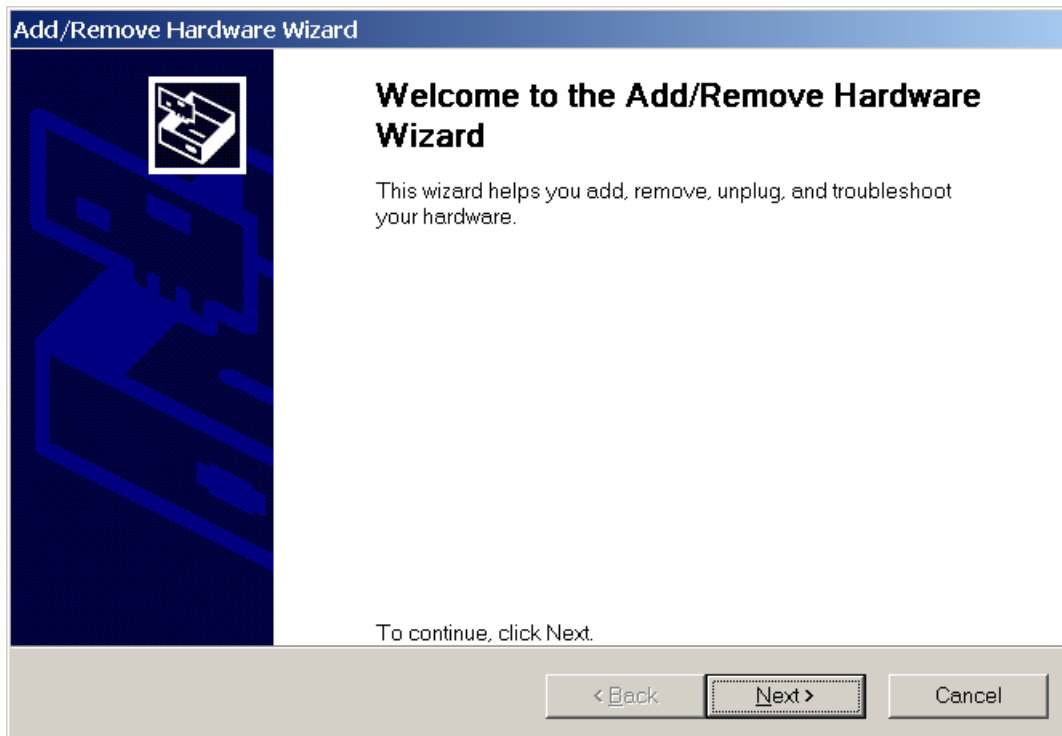
Step 4-1. Open the “**Control Panel**” by click the item “**Start / Settings / Control Panel**”.



Step 4-2. Double-click the item “**Add/Remove Hardware**”.

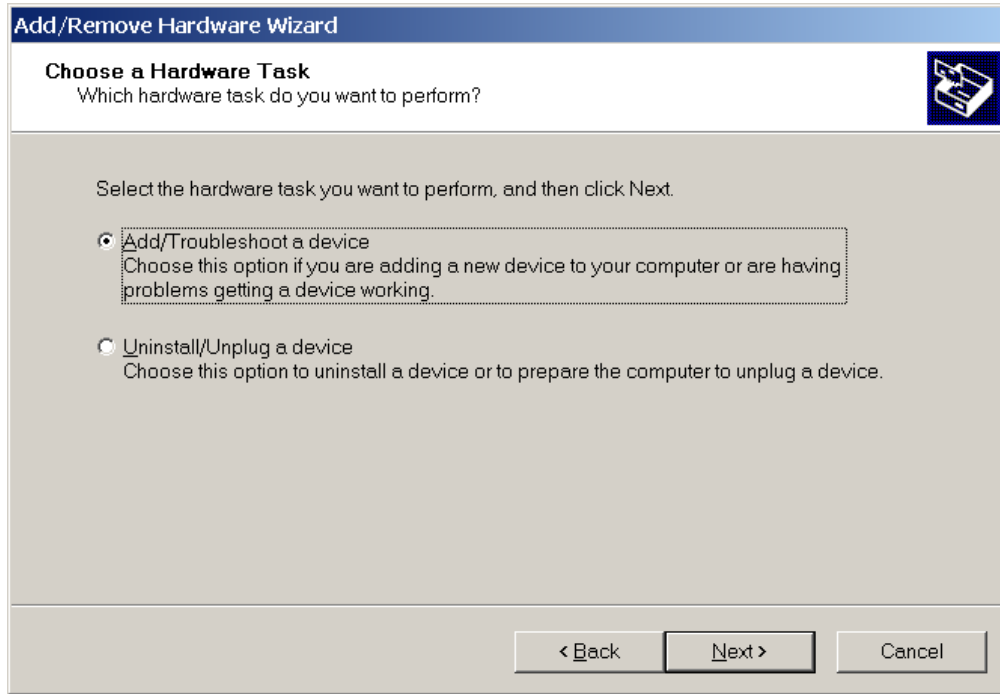


Step 4-3. Click the “**Next >**” button.

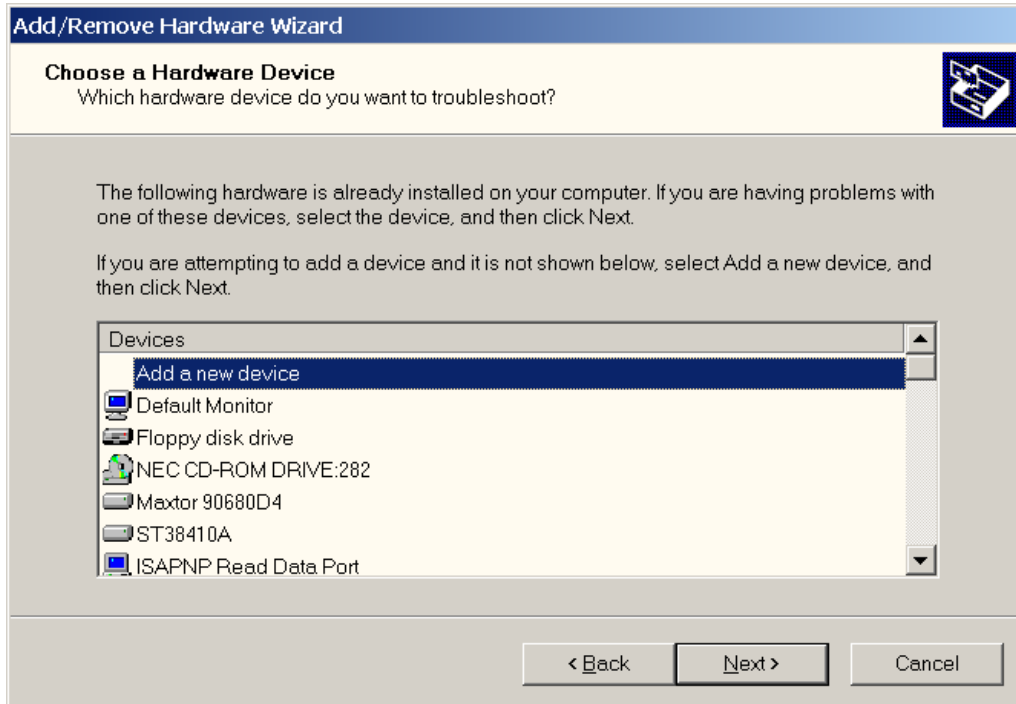




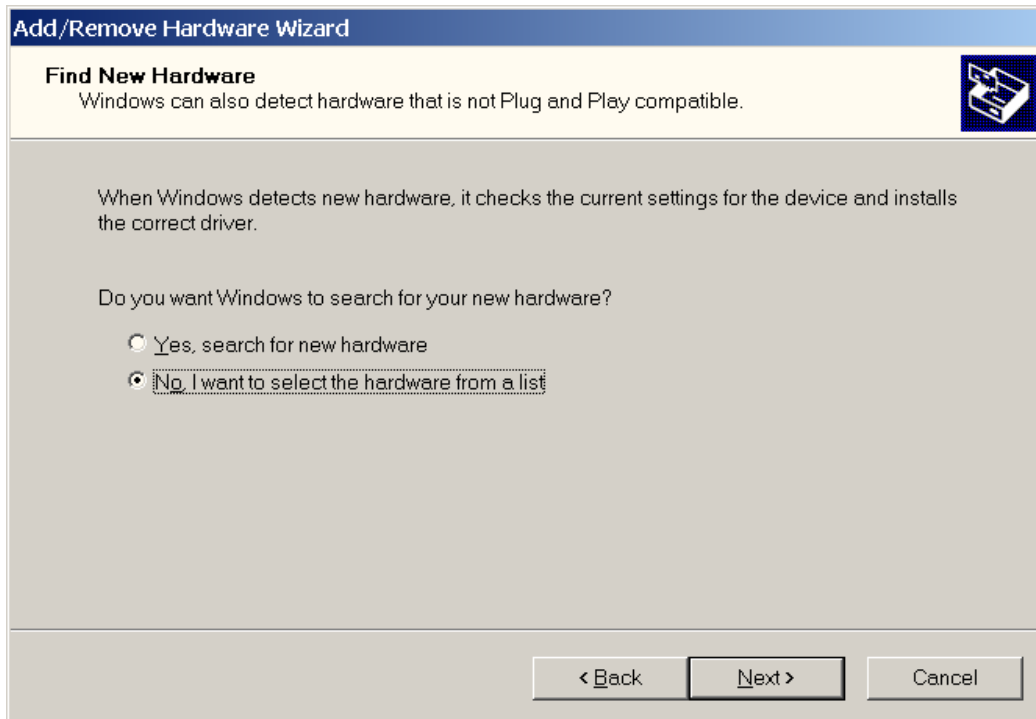
Step 4-4. Select the item “**Add/Troubleshoot a device**” and click the “**Next >**” button.



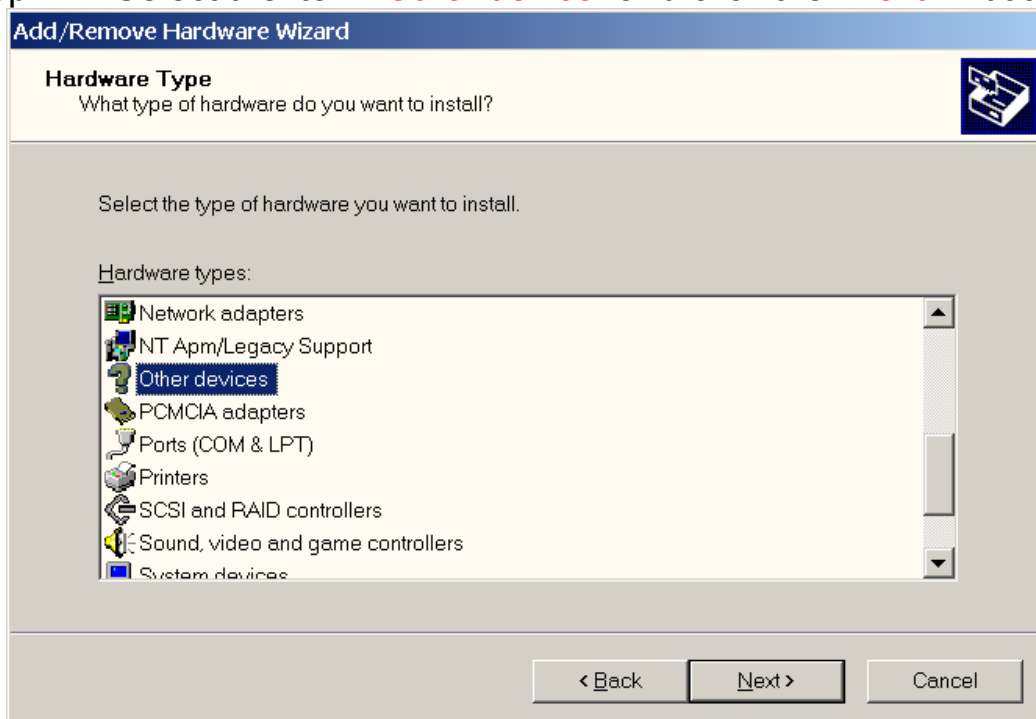
Step 4-5. Select the item “**Add a new device**” and click the “**Next >**” button.



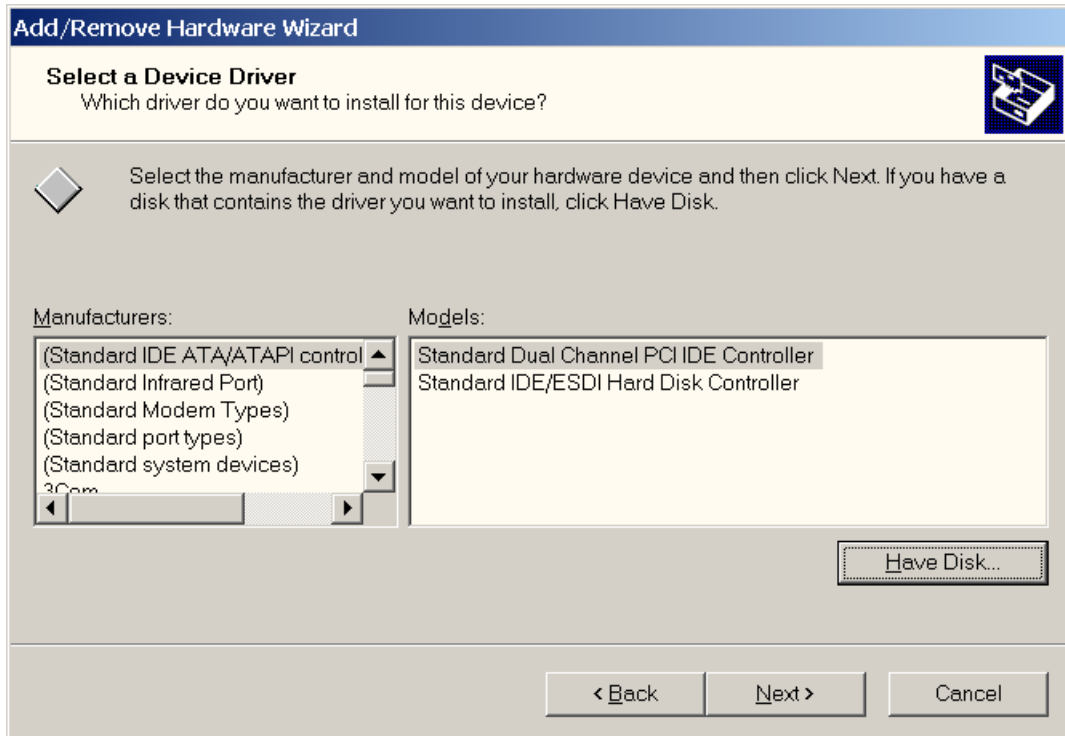
Step 4-6. Select the item “**No, I want to select the hardware from a list**” and click the “**Next >**” button.



Step 4-7. Select the item “**Other device**” and click the “**Next >**” button.

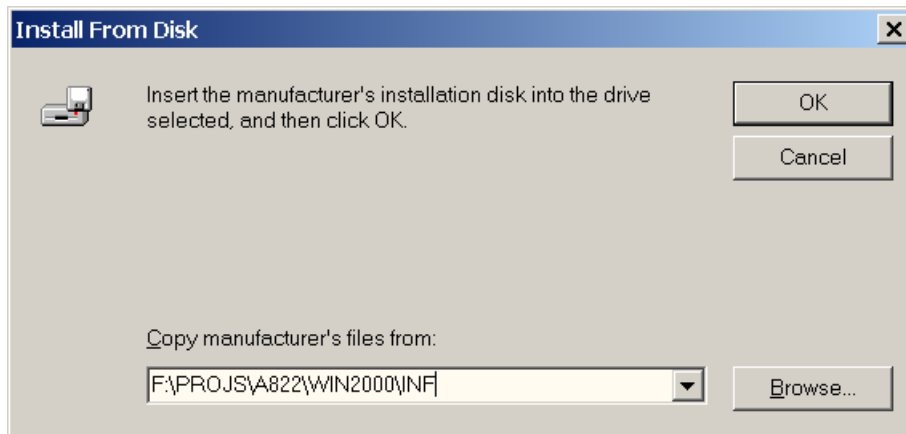


Step 4-8. Click the “**Have Disk...**” button.



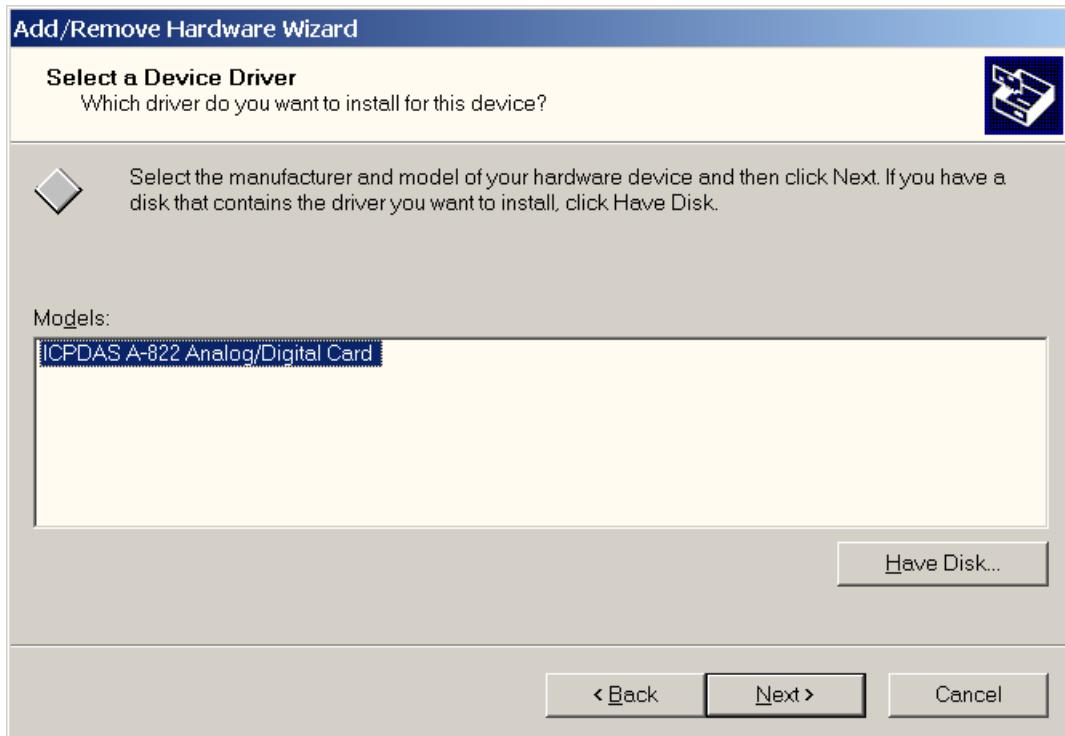
Step 4-9. Click the “**Browse...**” button to select the correct PnP information file (\*.inf) depending on your device.

Step 4-10. Click the “**OK**” button.



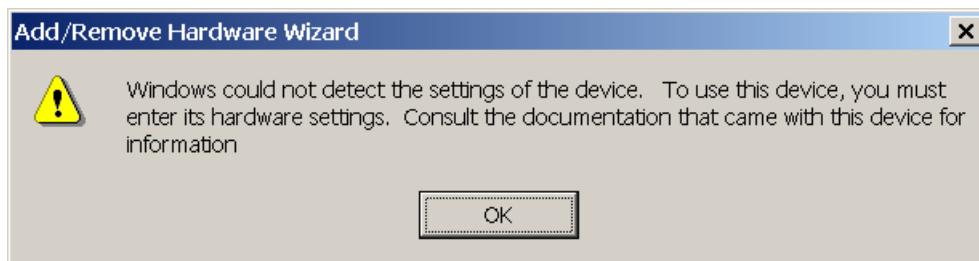
Step 4-11. Select the correct device from the “**Models:**” listbox.

Step 4-12. Click the “**Next >**” button.

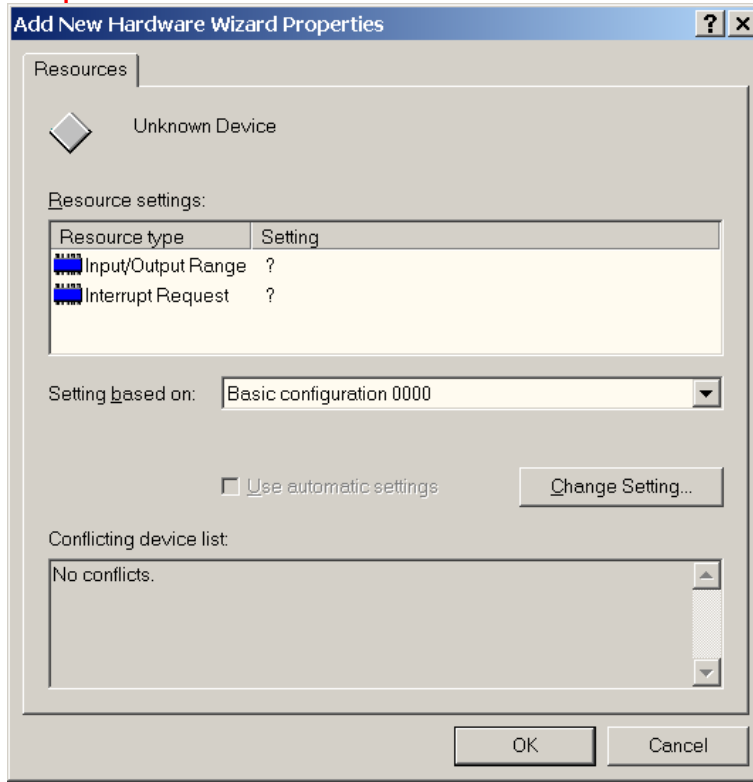


Step 4-13. The window “**Add/Remove Hardware Wizard**” pops up and says “**Windows Could not detect the settings of the device. To use this device, you must enter its hardware settings. Consult the documentation that came with this device for information.**”

Step 4-14. Click the “**OK**” button to enter the device’s settings.

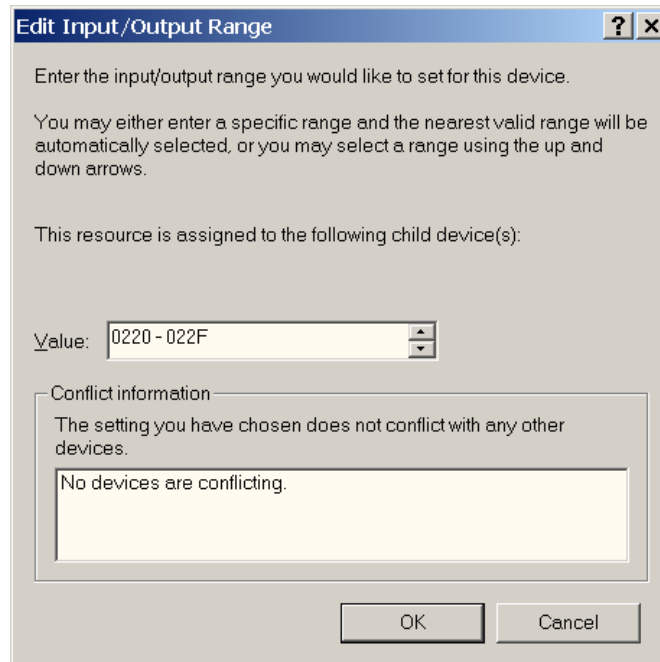


Step 4-15. Double-click on the “**Input/Output Range**” and “**Interrupt Request**” items to set the device’s resource.



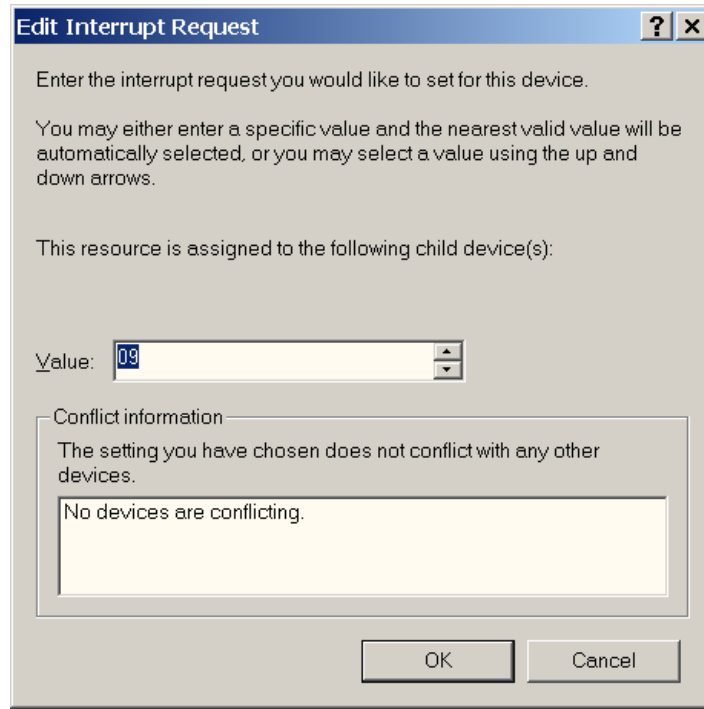
Step 4-16. Choose a “**Value:**” for the “**Input/Output Range**”, which doesn’t conflict with other devices.

Step 4-17. Click the “**OK**” button.

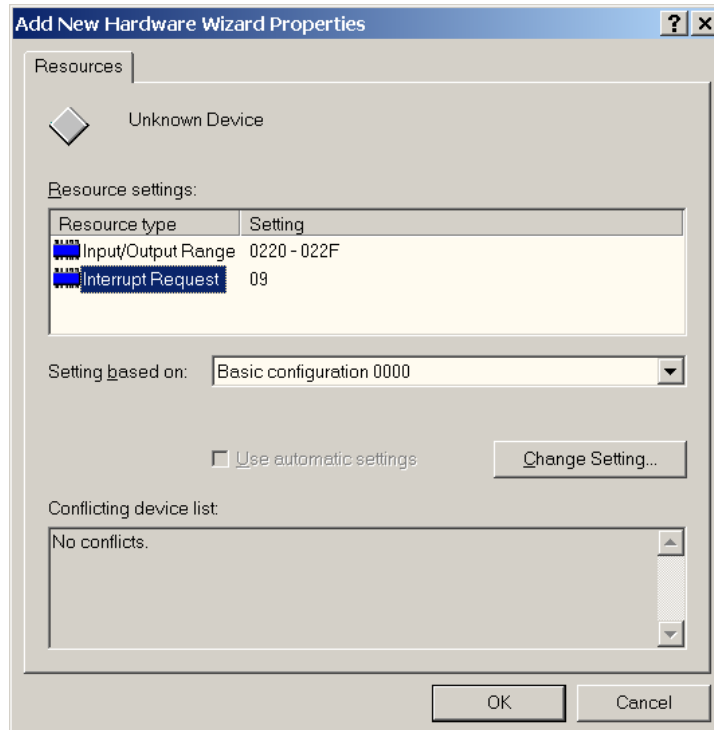


Step 4-18. Choose a “Value:” for the “Interrupt Request”, which doesn’t conflict with other devices.

Step 4-19. Click the “OK” button.

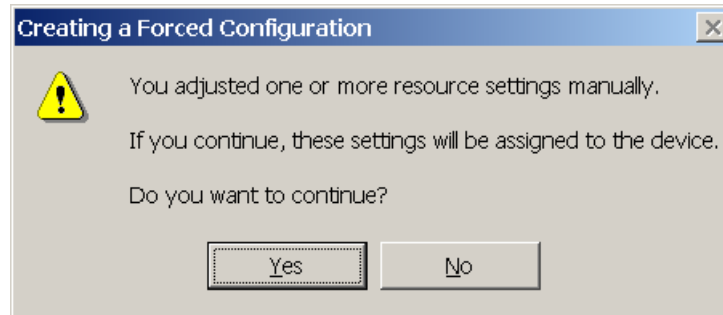


Step 4-20. Click the “OK” button.

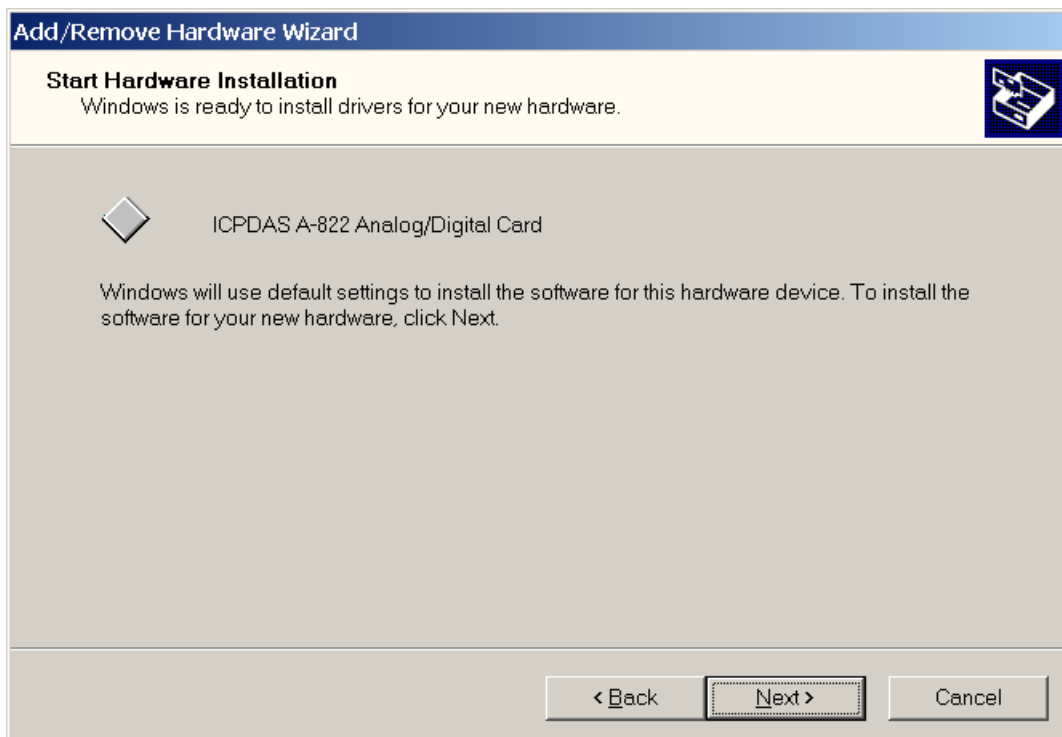


Step 4-21. The “**Creating a Forced Configuration**” window pops up and says : “**You adjusted one or more resource settings manually. If you continue, these settings will be assigned to the device. Do you want to continue?**”.

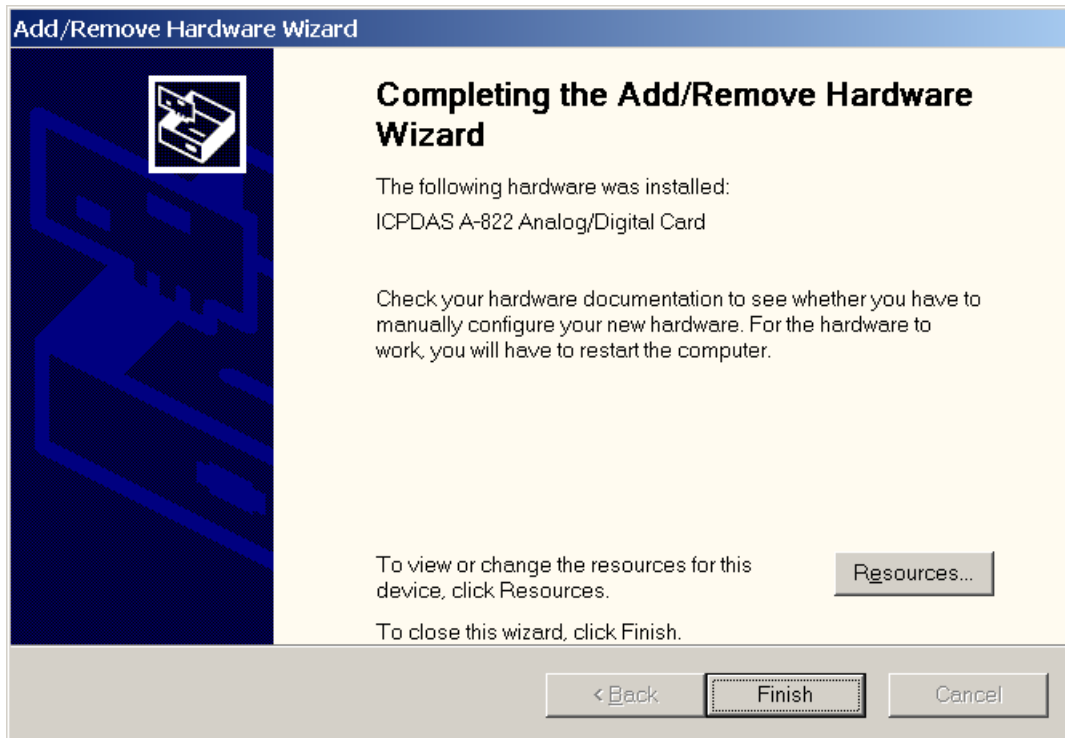
Step 4-22. Click the “**Yes**” button.



Step 4-23. Click the “**Next >**” button.

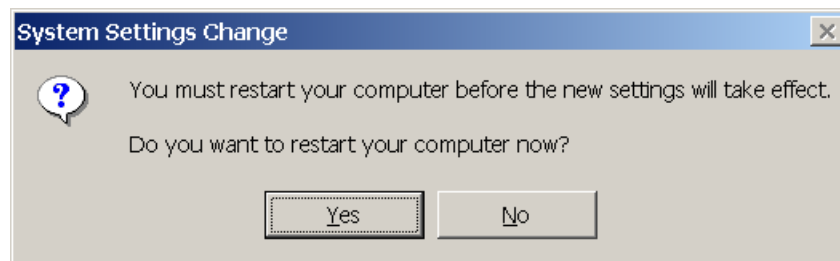


Step 4-24. Click the **“Finish”** button.



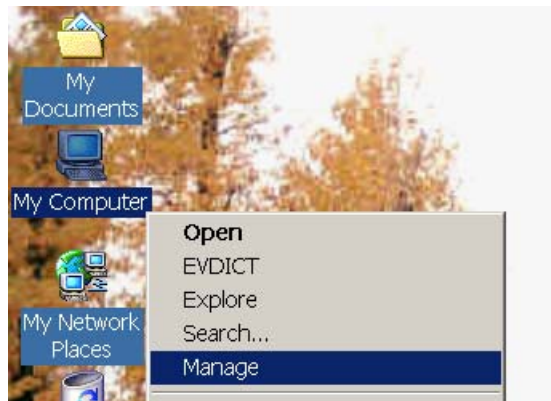
Step 4-25. The **“System Settings Change”** window pops up and says :  
“You must restart your computer before the new settings will take effect. Do you want to restart your computer now?”.

Step 4-26. Click the **“Yes”** button to restart your computer.





Step 4-27. Right-Click the **“My Computer”** icon and click the menu item **“Manage”** to launch **“Computer Management”**.



Step 4-28. Click the **“Device Manager”** and the user will be able to see that the device had been added.

