

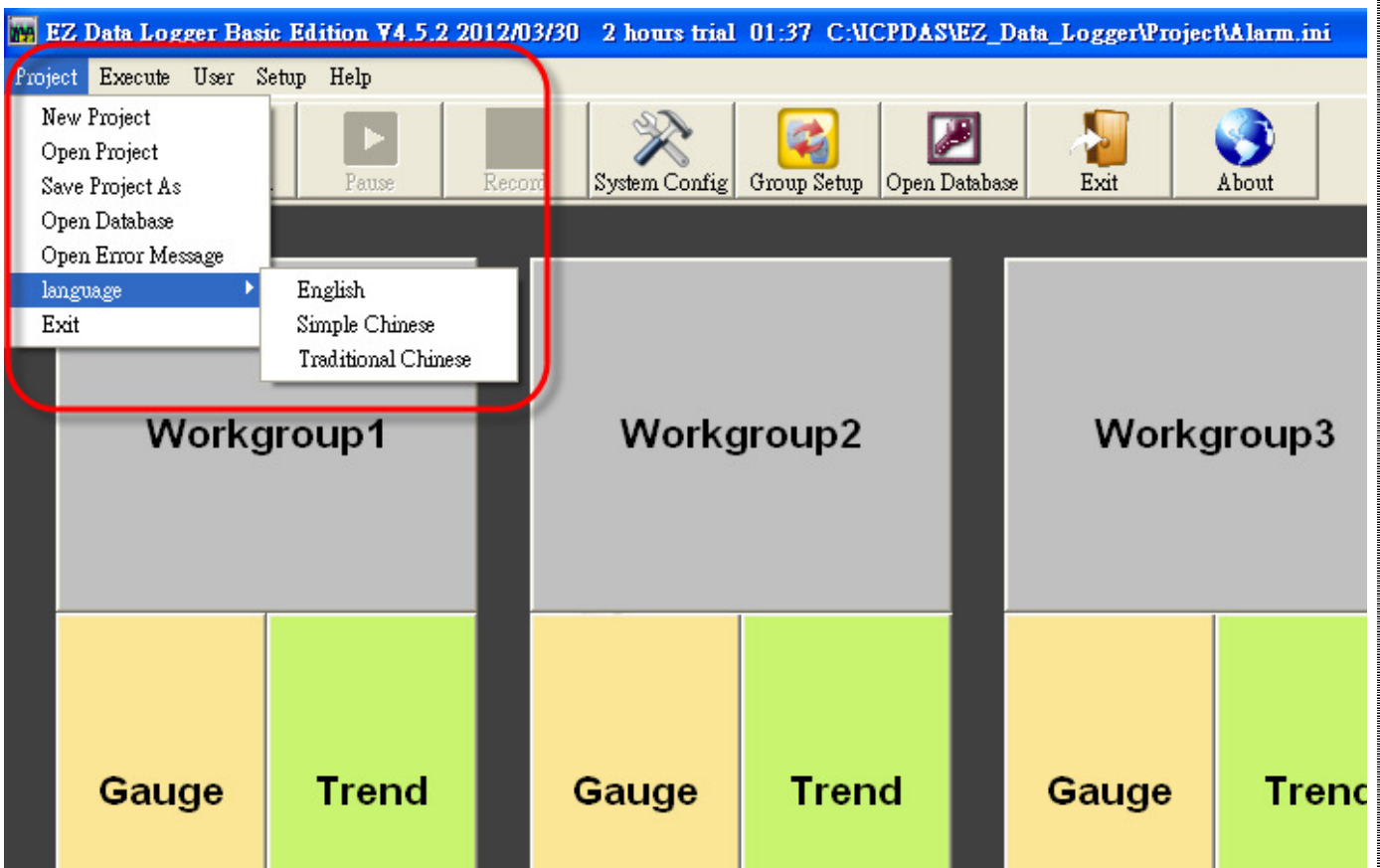
Classification	General Setting FAQ on EZ Data Logger				No.	1-001-01	
Author	Amber	Version	1.0.0	Date	2012/06/04	Page	1/4

How to edit the language file?

Applied to:

Platform	OS Version
PC	Windows 98/NT/2000/XP/Vista

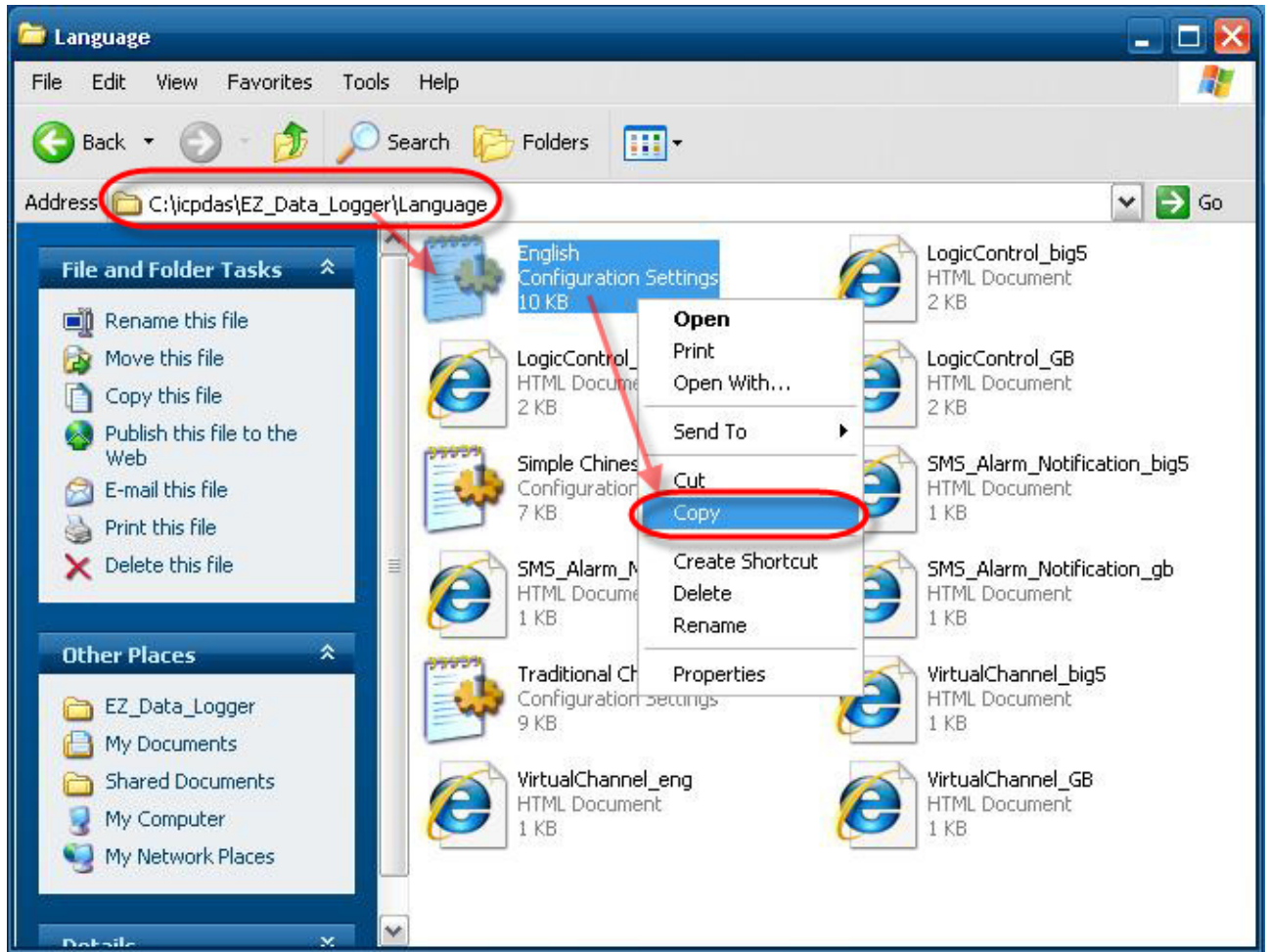
EZ Data Logger provides multi-language support for User Interface. You can change it in the main form: click **Project** from menu → point to **language** → select the language that you want. (Default settings provides three language options: English · Simple Chinese · Traditional Chinese.) The language conversion steps such as shown in the picture below ↓



If you want additional User Interface language, you can add and edit the language file in the “Language” folder which is in the EZ Data Logger installation folder. After restarting EZ Data Logger, the language you added will be automatically load into the software and you can select it to change the User Interface language. Please refer to the below German demo to build a new one.

Classification	General Setting FAQ on EZ Data Logger				No.	1-001-01	
Author	Amber	Version	1.0.0	Date	2012/06/04	Page	2/4

Step1 : Double-click **My Computer**, and open the **Language** folder of EZ Data Logger
(Default: C:\ICPDAS\EZ_Data_Logger\Language)→ Right-click on the **English.ini** file and select **copy**.



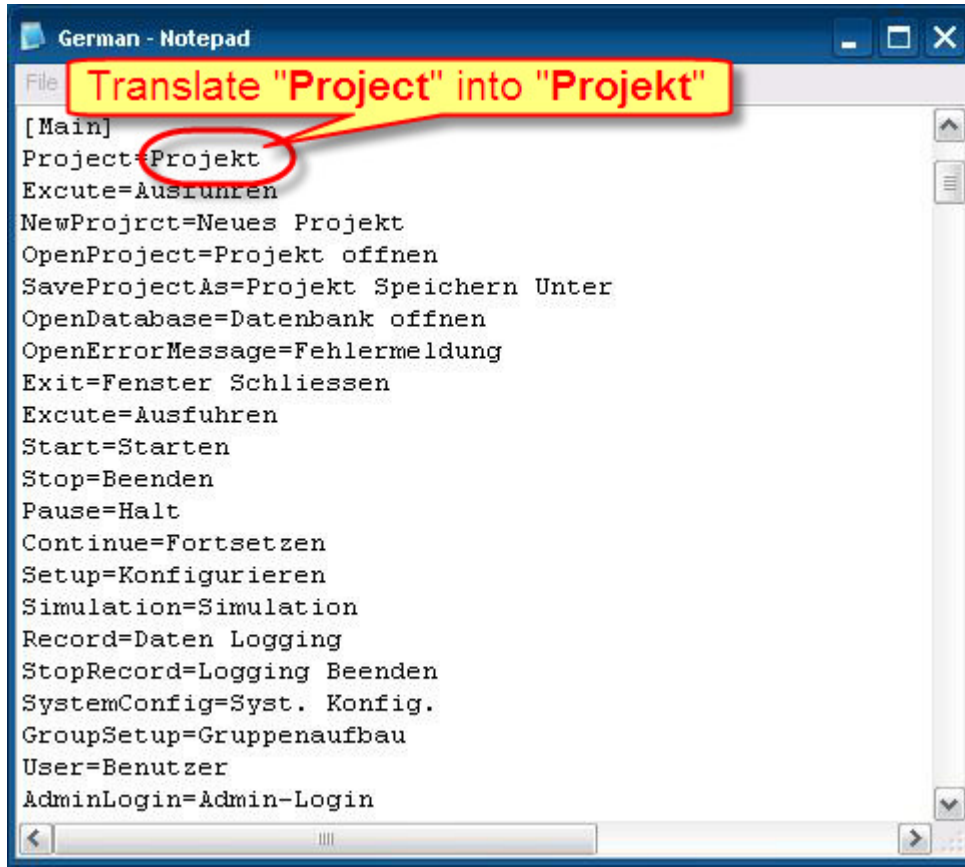
Step2 : In the same folder right-click an empty space and select **paste**→ Rename the file to **German.ini**. (The file name will be displayed in EZ Data Logger's language option.)



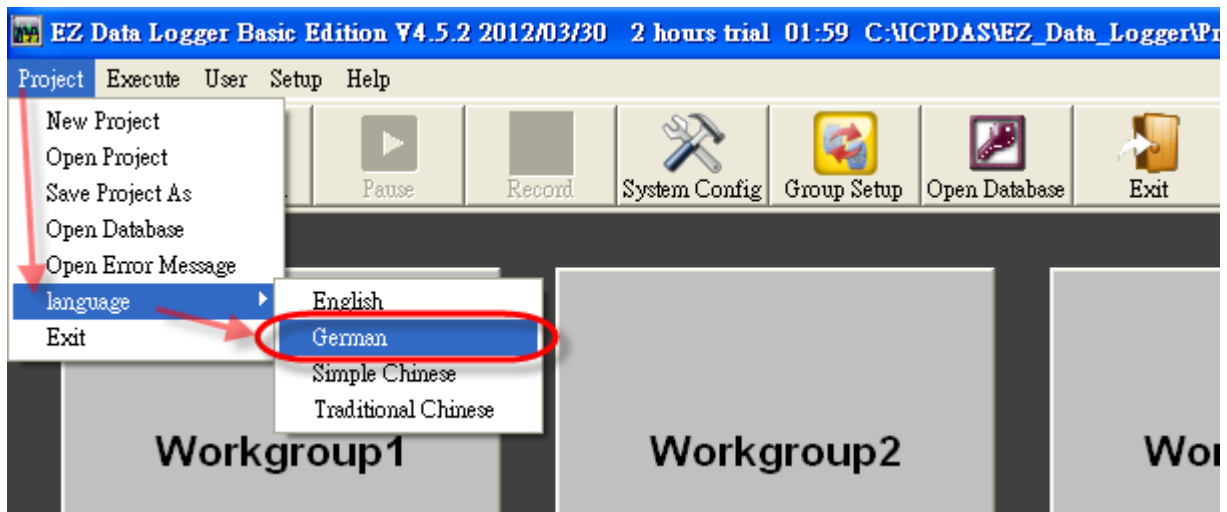
Classification	General Setting FAQ on EZ Data Logger				No.	1-001-01	
Author	Amber	Version	1.0.0	Date	2012/06/04	Page	3/4

Step3 : Double-click **German.ini** to open the file→ Translate the English option behind the equal sign into German individually.

EX: **Project**→**Projerk** 、 **Execute**→**Ausfuehren...**



Step4 : Restart **EZ Data Logger**, and then from menu click **Project** in the main form→ Point to **language**→ **German** option is shown in the language list, and select it to change.



Classification	General Setting FAQ on EZ Data Logger				No.	1-001-01	
Author	Amber	Version	1.0.0	Date	2012/06/04	Page	4/4

Step5 : Select **German** as EZ Data Logger User Interface language.

