

Classification	Control Logic Applied FAQ on EZ Data Logger				No.	3-013-03	
Author	Amber	Version	1.0.0	Date	2012/06/08	Page	1/9

How to record the previous value to VC?

Applied to:

Platform	OS Version
PC	Windows 98/NT/2000/XP/Vista

EZ Data Logger supports the "Control Logic" function. Control Logic uses the VB script. You can edit the script to set the output values or to calculate data into virtual channels. You can get/set the channel values by channel tag names.

Channel List

AI List	AO List	DI List	DO List
Counter List	Freq List	Virtual Channel	Control Logic
Contact List	Web Camera		

Const :

You can use these const variables in script.

Sunday, Monday, Tuesday, Wednesday, Thursday, Friday, Saturday

Variables :

```

If AI_2 > VC0 Then
  VC0 = AI_2
  Msg="AI_2 Max Value is "& VC0
End If

If Heat_N1 > 60 Then AlarmLight1 = 1

If AI_5 > 100 Then
  DO3 = 1

```

Scripting

Channel List

AI List	AO List	DI List	DO List
Counter List	Freq List	Virtual Channel	Control Logic
Contact List	Web Camera		

Tag names

Nickname	Tag	Location	Gain	Offset	Hight Alarm	Low Alarm	Description
I7005_AI_0	AI_0	I7005 Ch0	1	0	100	-10	I7005_AI_0
I7005_AI_1	AI_1	I7005 Ch1	1	0	100	-10	I7005_AI_1
I7005_AI_2	AI_2	I7005 Ch2	1	0	100	-10	I7005_AI_2
Machine1	Heat_N1	I7005 Ch3	1	0	100	-10	Temperature of machine1
Machine2	Heat_N2	I7005 Ch4	1	0	100	-10	Temperature of machine2
I7005_AI_5	AI_5	I7005 Ch5	1	0	100	-10	I7005_AI_5

Classification	Control Logic Applied FAQ on EZ Data Logger				No.	3-013-03	
Author	Amber	Version	1.0.0	Date	2012/06/08	Page	2/9

I. How to use VBScript to do Control Logic

1. Statements :

You can use “Conditional Statements” or “Looping statements” in script. The below form demonstrate how to use the statements.

	Conditional Statements	Looping Statements
Example	If...Then...Else	For...Next...
Explanation	Perform different actions for different decisions.	Run the same block of code a specified number of times.
Code	If condition1 Then [statementblock-1] Elseif condition2 Then [statementblock-2] ... Else [statementblock-n] End If	For counter = start To End [Step step] [statements] [Exit For] [statements] Next

2. Variables :

You can use these updated variables in script.

iYear	Year
iMonth	Month
iDay	Date
iHour	Hour
iMinute	Minute
iSecond	Second
iWeekDay	Weekday (Sunday = 1, Monday = 2, Tuesday = 3.....Saturday = 7)
Now	Return the current system time
Timer	The Timer function returns the number of seconds since 12 : 00 AM
Msg	If Msg is not null, it will be print in the main warning text.

Classification	Control Logic Applied FAQ on EZ Data Logger				No.	3-013-03	
Author	Amber	Version	1.0.0	Date	2012/06/08	Page	3/9

3. Const :

You can use these const variables in script.

Const
Sunday
Monday
Tuesday
Wednesday
Thursday
Friday
Saturday

4. Functions :

You can use these functions in script.

Sin (<i>number</i>)	Return the sine of a specified number (radian)
Cos (<i>number</i>)	Return the cosine of a specified number (radian)
Tan (<i>number</i>)	Return the tangent of a specified number (radian)
Atn (<i>number</i>)	Return the arctangent of a specified number
Abs (<i>number</i>)	Return the absolute values of a specified number
Sqr (<i>number</i>)	Return the square root of a specified number

Classification	Control Logic Applied FAQ on EZ Data Logger					No.	3-013-03
Author	Amber	Version	1.0.0	Date	2012/06/08	Page	4/9

II. How To record the previous value to VC

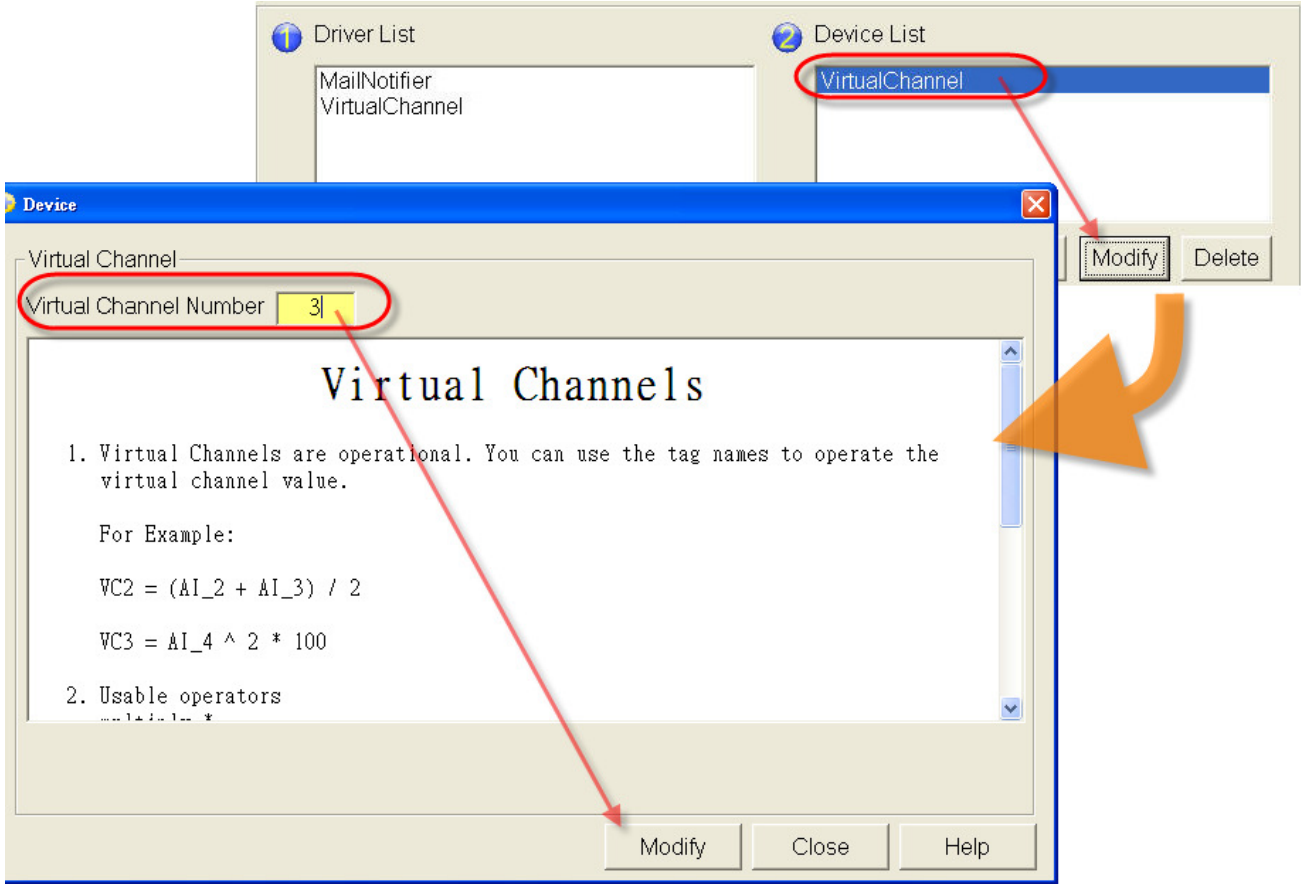
You can record the previous value to Virtual Channel, and use it to do various applications. For Example, you can record the pre-value of thermometer to VC and through the control logic to calculate the change of temperature. The output device will then control the temperature variation within a specified range. Please refer to the following steps to record the pre-value to VC by control logic.

Step1 : Open **EZ Data Logger**, and then from the button list click the **Group Setup** button.



Classification	Control Logic Applied FAQ on EZ Data Logger				No.	3-013-03	
Author	Amber	Version	1.0.0	Date	2012/06/08	Page	5/9

Step2 : From “Device List” select **VirtualChannel**, and then click **Modify** button→ In the popup “Device” form, type the **Virtual Channel Number** (up to 256 channels), and then click the **Modify** button.



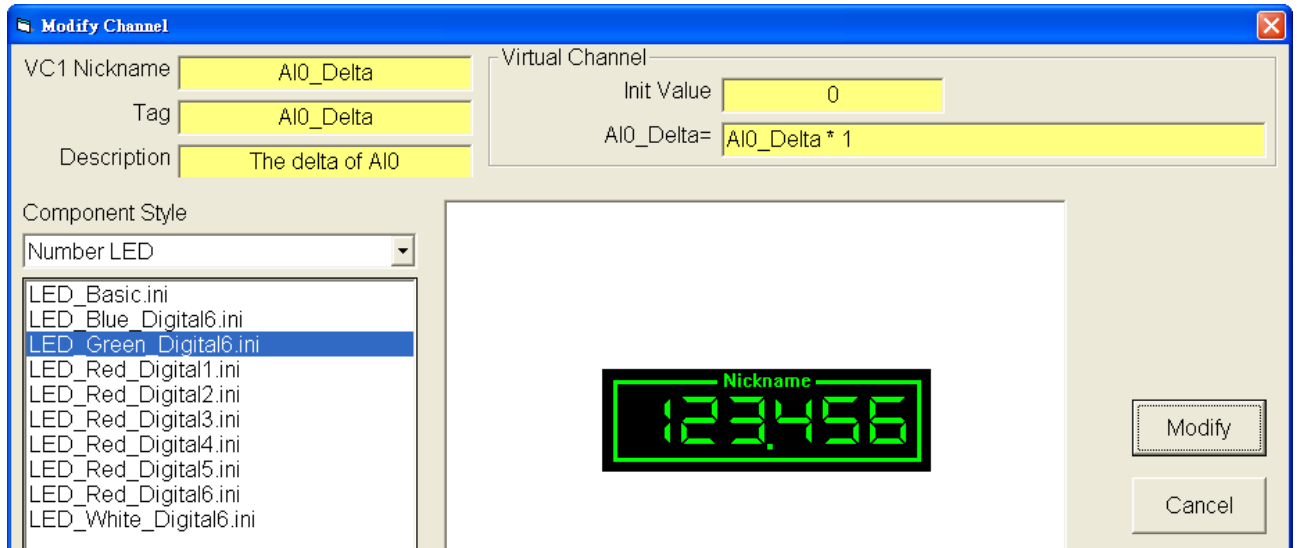
Classification	Control Logic Applied FAQ on EZ Data Logger				No.	3-013-03	
Author	Amber	Version	1.0.0	Date	2012/06/08	Page	6/9

Step3 : Select one virtual channel, and then click the **Modify** button.

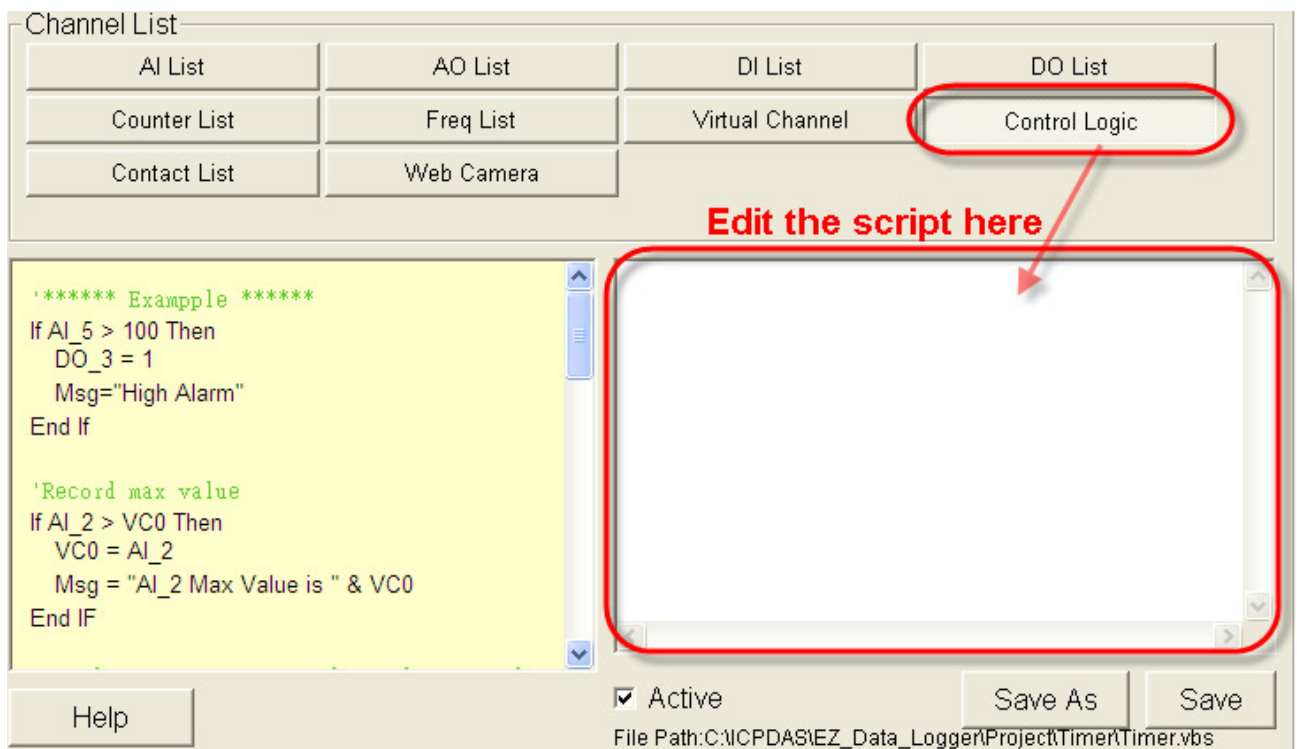
Step4 : Edit **Nickname** 、 **Tag** name 、 **Description** of VC0 → Set **Init Value** = 0, and set the operation: **AI0_Pre = AI0_Pre * 1** → Select **component style** → Click the **Modify** button.

Classification	Control Logic Applied FAQ on EZ Data Logger				No.	3-013-03	
Author	Amber	Version	1.0.0	Date	2012/06/08	Page	7/9

Step5 : Repeat Step3~4 to set another VC.



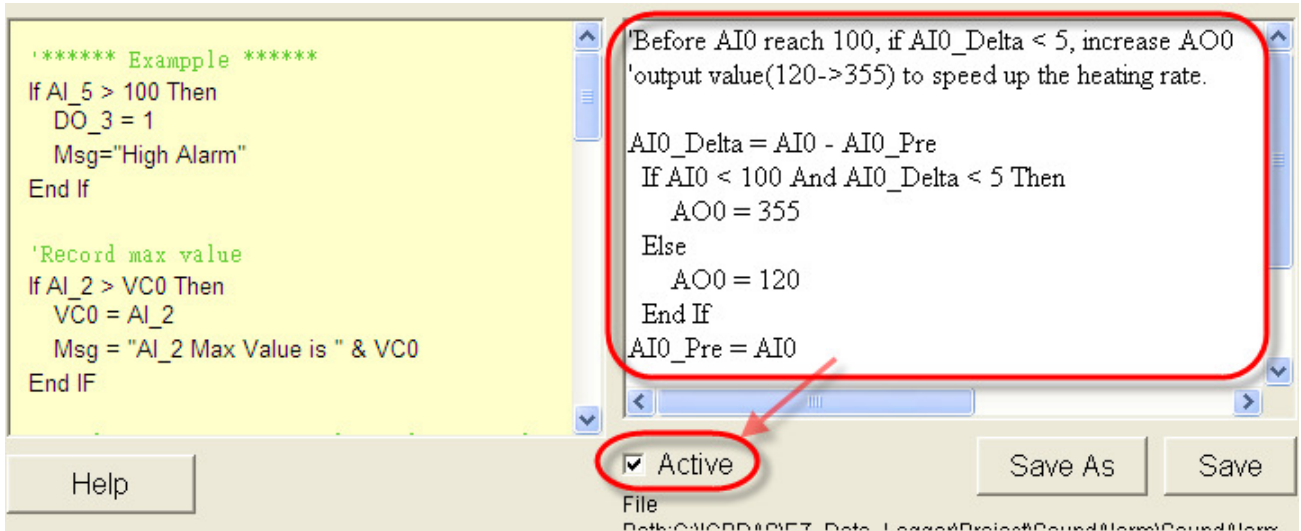
Step6 : From the "Channel List" click the **Control Logic** button to edit script.



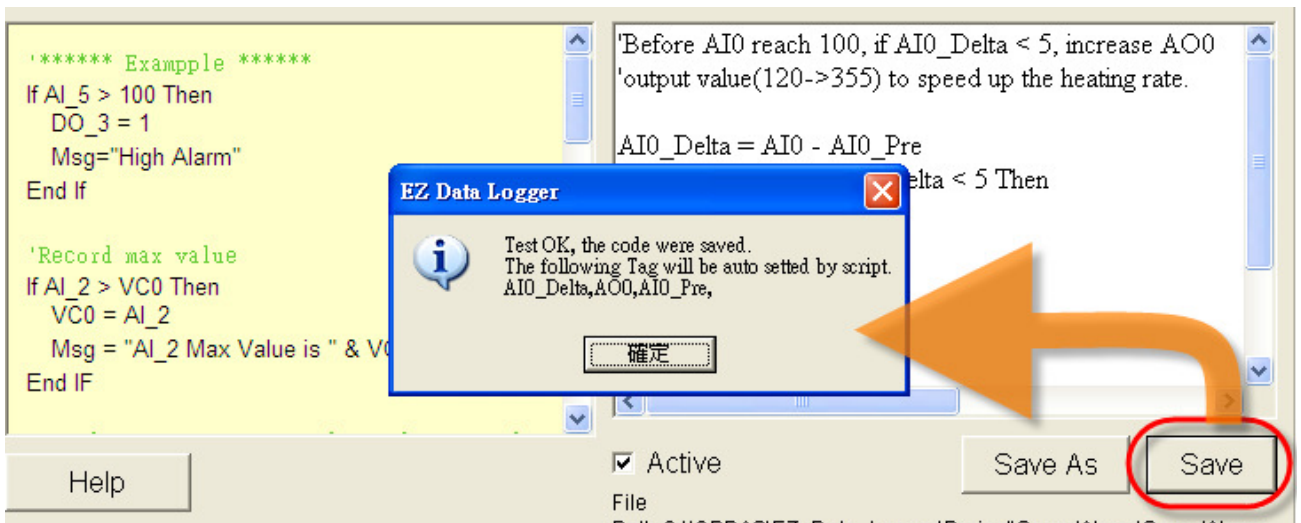
Classification	Control Logic Applied FAQ on EZ Data Logger				No.	3-013-03	
Author	Amber	Version	1.0.0	Date	2012/06/08	Page	8/9

Step7 : Edit the script.

First calculate the temperature variation ($AI0_Delta = AI0 - AI0_Pre$), and then use **"If...Then...Else"** statements to increase AO0 output power(355) to do the heating action if AI0 not yet reaches 100 degrees and AI0_Delta is less than 5, otherwise keep AO0 output power(120). Last set the AI0_Pre value that equal to AI0→ Tick **Active** to enable the control logic function.



Step8 : Click the **Save** button to save the script setting into your project. Next time the control logic will load the setting you saved, and you do not have to re-edit. If your setting is correct, the popup window will show you that it is correct. Otherwise it will show you that your setting is wrong, and you can not save your editing.



Classification	Control Logic Applied FAQ on EZ Data Logger				No.	3-013-03	
Author	Amber	Version	1.0.0	Date	2012/06/08	Page	9/9

Step9 : In the “Workgroup Setting” form, select the channels that have been set and add them into Workgrou1, and then click the **Home** button to back the main form to execute the project.

Workgroup Setting

1 Driver List
DCON_COM1
MailNotifier
VirtualChannel

2 Device List
VirtualChannel
Controller_A

Install Modify Delete Add Modify Delete

Channel List

AI List	AO List	DI List	DO List
Counter List	Freq List	Virtual Channel	Control Logic
Contact List	Web Camera		

Operation Demo

Operation Demo	Description
VC0 + 1	Up count timer
(AI3 + AI4) / 2	Average
Abs(AI5)	Absolute Value Function
DO4 And DO5	Boolean operator

Nickname	Tag	Location	Init Value	Operation	Description
AIO_Pre	AIO_Pre	VC0	0	AIO_Pre * 1	Pre-value of AIO
AIO_Delta	AIO_Delta	VC1	0	AIO_Delta * 1	The delta of AIO
VC2	VC2	VC2	0	VC2 * 1	VC2

Work Group

- Workgroup1
- Workgroup2
- Workgroup3

AI Channels
AIO

AO Channels
AO0

DI Channels

DO Channels

Counter Channels

Freq Channels

Virtual Channels

Webcam Browsers

Modify
Add>>

Home