

Classification	General Setting FAQ on EZ Data Logger				No.	1-007-07	
Author	Amber	Version	1.0.0	Date	2012/06/05	Page	1/3

How to export data to EXCEL from local database?

Applied to:

Platform	OS Version
PC	Windows 98/NT/2000/XP/Vista

I. Set local database to log module data

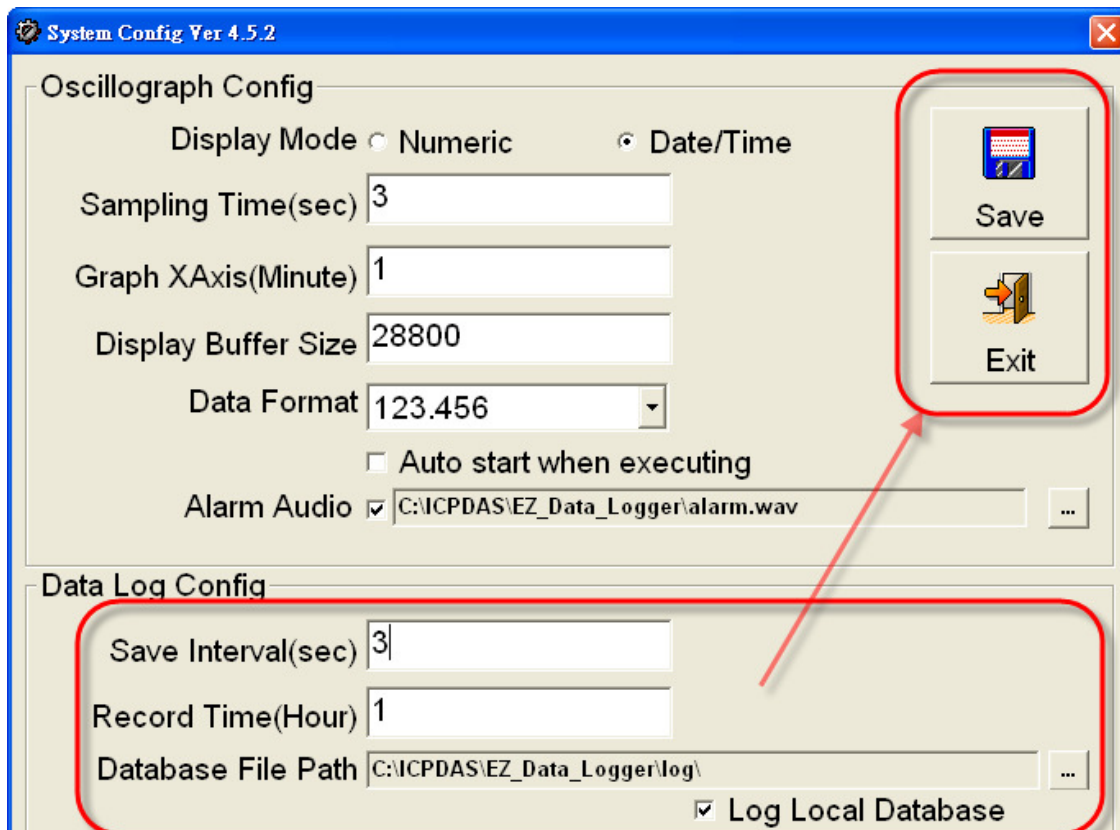
Step1 : Open EZ Data Logger, and then from the button list click **System Config** button.



Step2 : Edit the settings of local database : **Save Interval**、**Record Time** and **Database File Path**

Path→ Tick **Log Local Database**→ **Save**→ **Exit**.

Note: “Save Interval” must be greater than or equal to “Sampling Time”, and must be in multiples of “Sampling Time”.

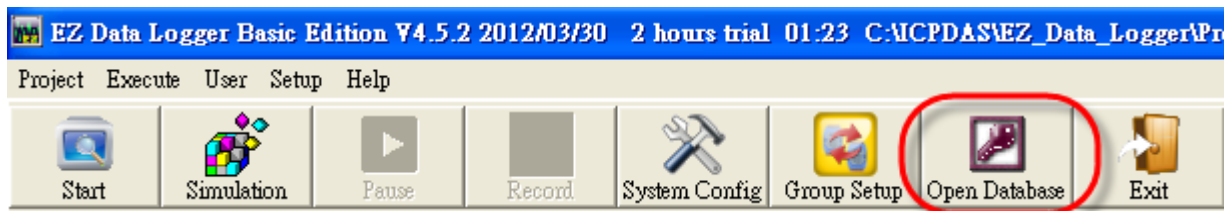


Classification	General Setting FAQ on EZ Data Logger				No.	1-007-07	
Author	Amber	Version	1.0.0	Date	2012/06/05	Page	2/3

II. Export data to EXCEL from local database

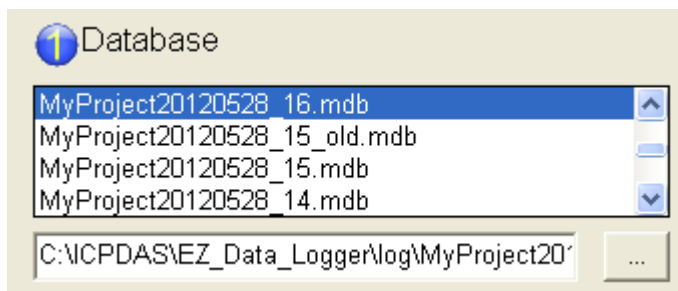
In EZ Data Logger the history data of local database not only can plot the trend but also can export to EXCEL. Before following these steps to export data, please stop the project in order to properly open the local database to show history data.

Step1 : From the button list click the **Open Database** button.

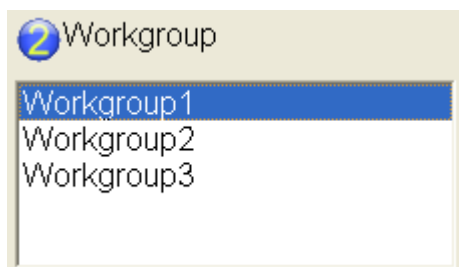


Step2 : Select a database.

Click the database list or click to open a database in other directory.

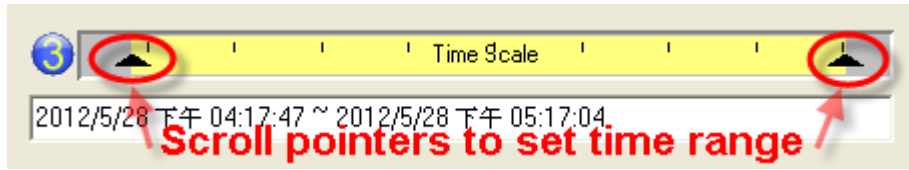


Step3 : Click the Workgroup list to select a workgroup.



Classification	General Setting FAQ on EZ Data Logger					No.	1-007-07
Author	Amber	Version	1.0.0	Date	2012/06/05	Page	3/3

Step4 : Scroll the pointer to choose time range.



Step5 : Click **Table** to load the table data→ Click **Export**.

2012/6/5 下午 02:27:59 ~ 2012/6/5 下午 02:28:35

Table Load Trend Print Export

List	187019 AI 00	187019 AI 11	187019 AI 22	187019 AI 33	187019 AI 44	187019 AI 55	187019 AI 66	187019 AI 77	SamplingTime
0	12.706	24.256	6.326	33.062	41.614	54.924	16.82	27.852	2012/6/5 下午
1	3.427	41.55	39.186	33.669	10.844	21.921	45.128	20.608	2012/6/5 下午
2	55.777	22.245	41.399	27.197	45.12	23.08	49.643	57.984	2012/6/5 下午
3	8.387	4.036	32.222	46.968	44.324	37.347	10.874	34.552	2012/6/5 下午
4	57.39	42.118	38.413	43.801	15.84	41.166	56.829	42.381	2012/6/5 下午
5	56.42	9.185	54.23	26.016	54.55	38.483	3.015	41.043	2012/6/5 下午
6	56.609	55.435	11.431	29.435	22.837	30.743	12.44	37.606	2012/6/5 下午
7	26.589	38.561	9.273	47.377	30.584	6.892	55.612	36.642	2012/6/5 下午
8	22.494	63.759	4.514	10.662	45.174	53.375	20.538	60.221	2012/6/5 下午
9	37.957	13.725	61.413	57.612	31.489	54.137	12.728	27.913	2012/6/5 下午
10	44.11	28.653	51.726	44.046	31.913	10.623	25.187	6.789	2012/6/5 下午
11	19.586	36.24	44.712	13.284	56.327	31.779	28.425	51.418	2012/6/5 下午
12	10.519	11.68	37.129	36.147	52.116	14.051	10.449	13.871	2012/6/5 下午

Step6 : Click the **Excel** button to export data to EXCEL.

