

Classification	General Setting FAQ on EZ Data Logger				No.	1-006-06	
Author	Amber	Version	1.0.0	Date	2012/05/11	Page	1/4

How to set user level?

Applied to:

<i>Platform</i>	<i>OS Version</i>
<i>PC</i>	<i>Windows 98/NT/2000/XP/Vista</i>

I. User level description

EZ Data Logger supply permission management, so you can set different levels for different types of user. Before you start setting the user level, please refer to the below permission form to appropriately plan for user groups.

	Admin	Power User	User
Modify the project	●	○	○
Account management	●	○	○
Start/Stop projects	●	●	○
Set AO/DO values	●	●	○
Switch group projects	●	●	●

● : allowed ○ : not allowed

- **Admin** : All permissions.
- **Power User** : Run/Stop programs. Set AO/DO values.
- **User** : Switch groups to show.(No password)

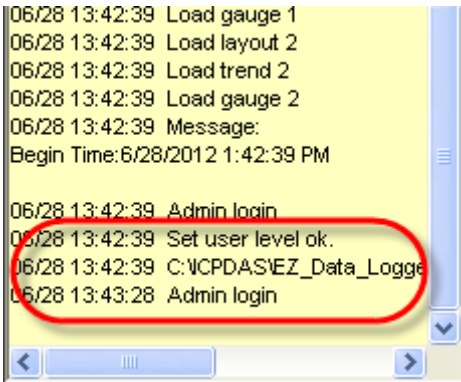
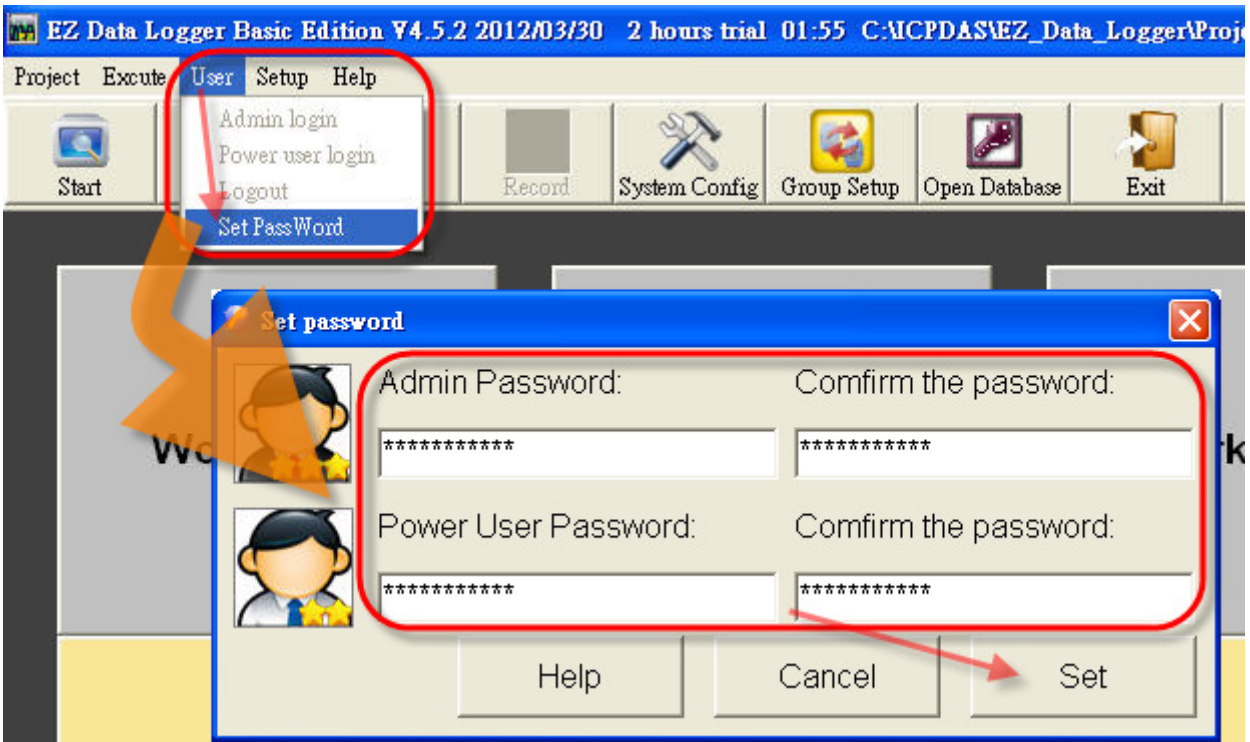
Classification	General Setting FAQ on EZ Data Logger				No.	1-006-06	
Author	Amber	Version	1.0.0	Date	2012/05/11	Page	2/4

II. How to set user level

In the beginning the default password of Admin is Null. You will login as the Admin level that password is null, and have the all permissions. The follow steps will show you how to set the password and how to disable the password settings.

1. Set the password of Admin or Power User.

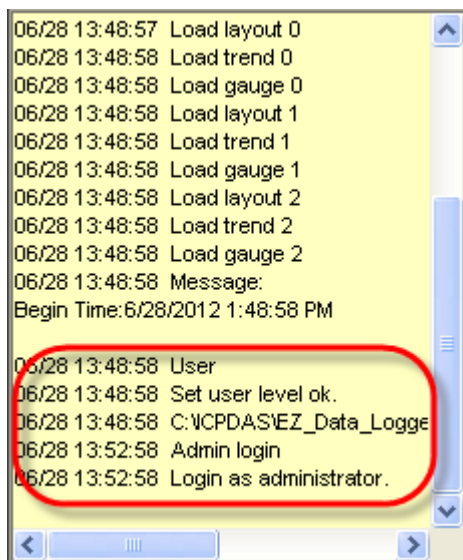
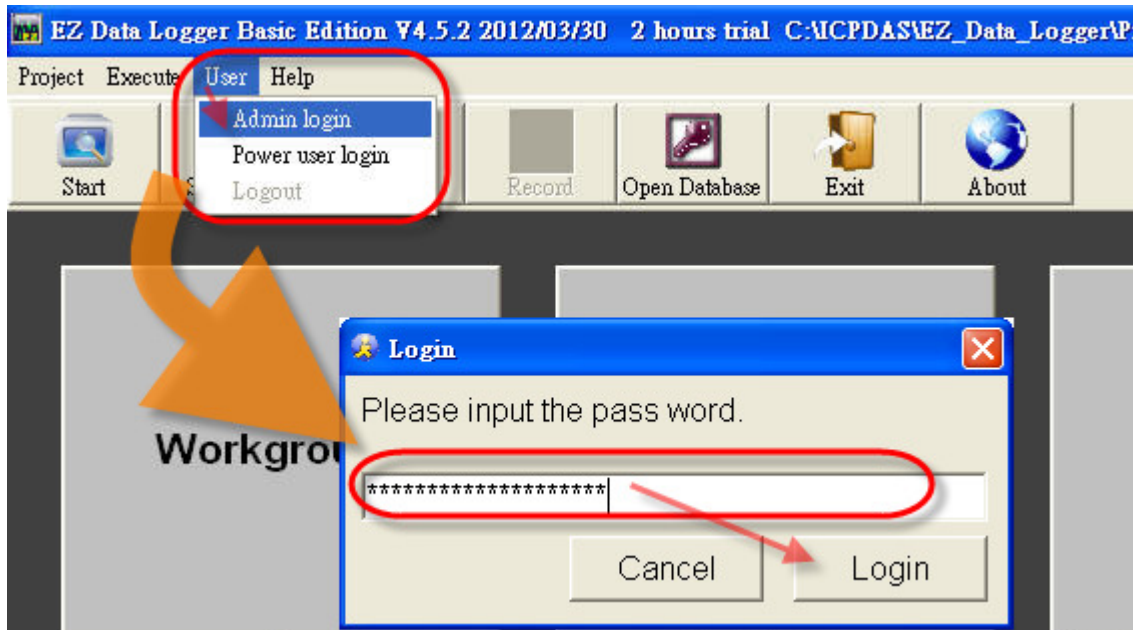
From the menu click **User**→ Click **Set Password** to open the “Set Password” form→ Individually enter the password of Admin and Power User in the two text box (Entering the password twice helps to make sure that you type your new password correctly) → Click **Set** button to finish settings→ The successful message will show in the main warning text.



Classification	General Setting FAQ on EZ Data Logger				No.	1-006-06	
Author	Amber	Version	1.0.0	Date	2012/05/11	Page	3/4

2. Change the login of different user level

After finishing password setting, restart EZ Data Logger and auto login by user. You can change user level by follow steps: From menu click **User**→ Select **Admin login** or **Power user login**→ In the popup “Login” form input the password→ Click **Login** button→ In the main warning text you can see the user level changed from user to power user.



Classification	General Setting FAQ on EZ Data Logger				No.	1-006-06	
Author	Amber	Version	1.0.0	Date	2012/05/11	Page	4/4

3. Disable the password settings

Before you disable the password setting of user level, you should login first. And then do the follow steps: From menu click **User**→ Click **Set Password**→ In the popup “Set password” form, erase the password setting→ Click **Set** button to finish setting.

