

Quick Start Guide for I-8410/I-8810

October 2010, Version 1.1

Congratulations!

Congratulations on purchasing I-8410/I-8810 - the most popular automation solution for remote monitoring and control application. This Quick Start Guide will provide information needed to get started. Please also consult the User Manual for detailed information on the setup and use of I-8410/I-8810.

What's In the Box?

In addition to this guide, the package includes the following items:



**I-8000
(I-8410/I-8810)**



Software Utility CD



**RS-232 Cable
(CA-0915)**



**Screw Driver
(1C016)**

Technical Support

- **I-8410/I-8810 User Manual**

CD:\NAPDOS\DCON\8410_8810\Documents\

ftp://ftp.icpdas.com/pub/cd/8000cd/napdos/dcon/8410_8810/documents/

- **I-8410/I-8810 Website**

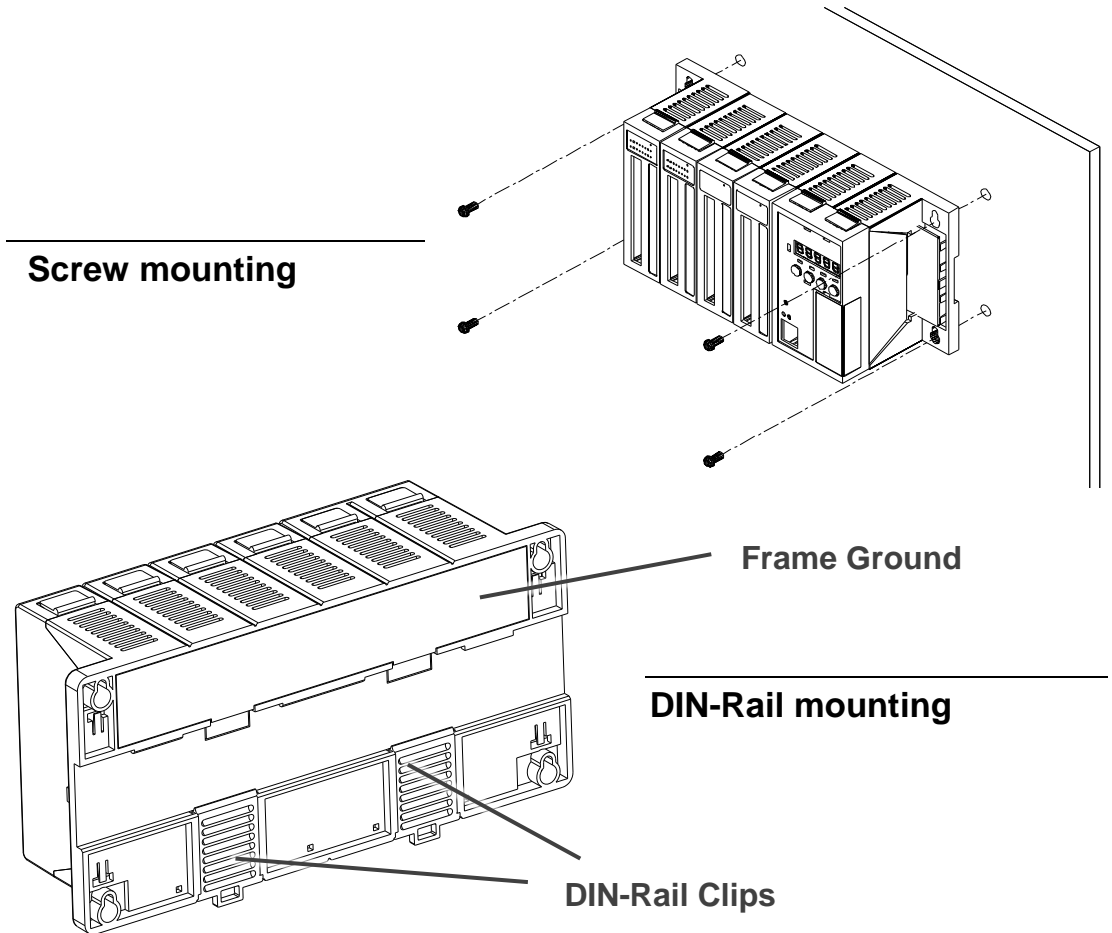
<http://www.icpdas.com/products/PAC/i-8000/i-8410-i-8810.htm>

- **ICP DAS Website**

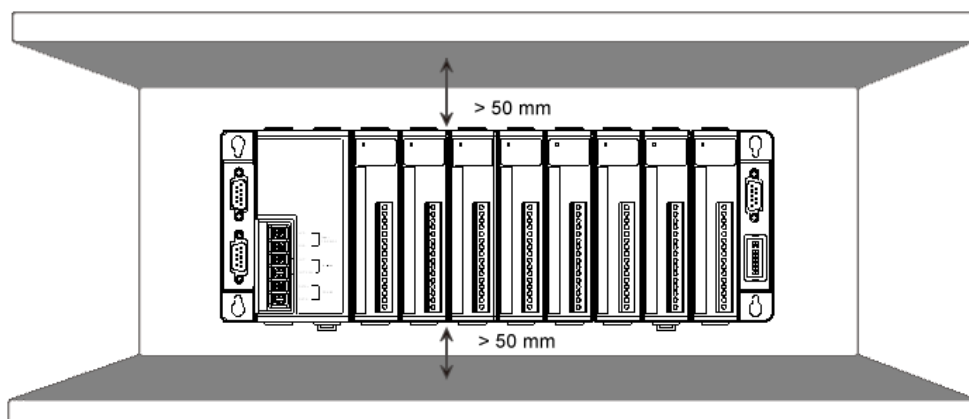
<http://www.icpdas.com/>

1 Mounting the I/O Unit

The I-8410/I-8810 can be mounted with the bottom of the chassis on the standard 35 mm DIN rail, or it can be screw mounted.

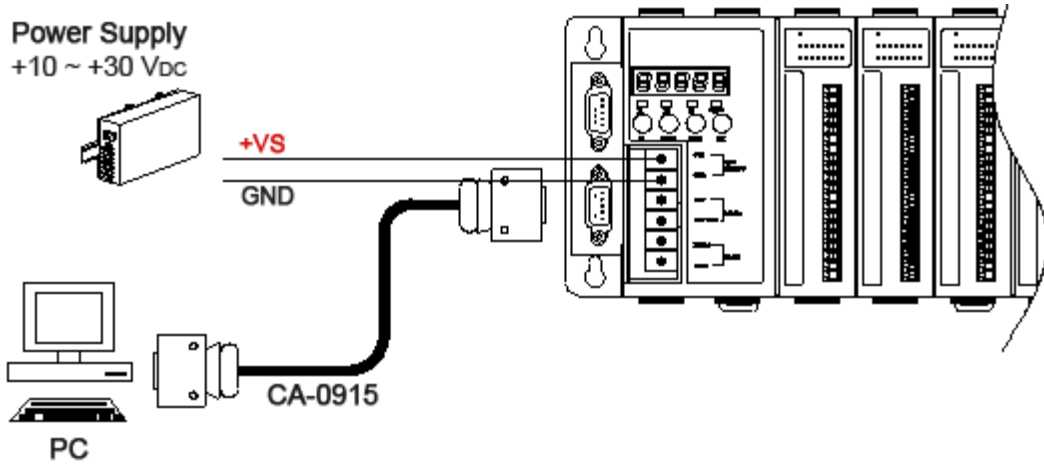


A minimum clearance of 50mm between the I-8410/I-8810 and the top and bottom side of the enclosure panels must be provided.

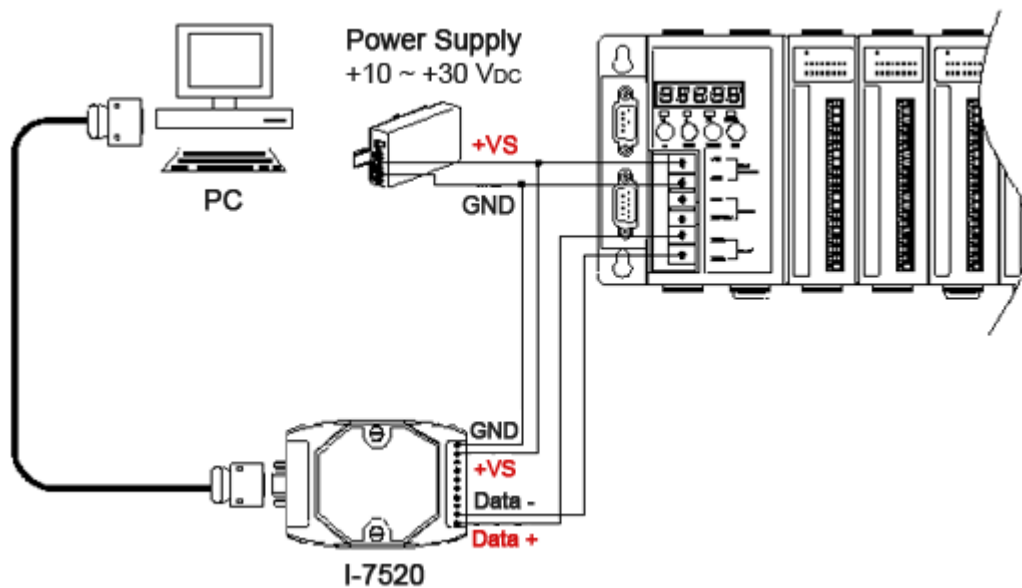


2 Connecting to PC and Setting up the Power

This package includes a RS-232 cable for connecting the I-8410/I-8810 to PC. The I-8410/I-8810 can be powered using a +10 ~ 30 V_{DC} power supply.

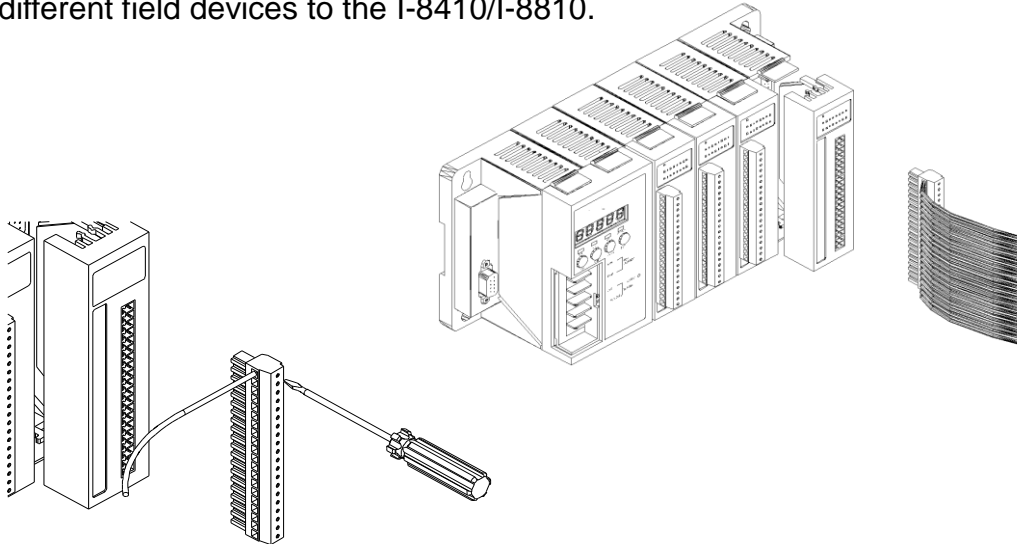


You can also communicate to computer via RS-485 interface using the I-7520 converter (an RS-232 to RS-485 converter)



3 Inserting and Wiring the I/O Modules

There are various types of I/O expansion modules for interfacing many different field devices to the I-8410/I-8810.



Each support module has its own manual covering the I/O module specifications, pin assignments, wire connections. For more information about I/O expansion module, please refer to

http://www.icpdas.com/products/PAC/i-8000/8000_IO_modules.htm#i87

4 Installing the DCON Utility

DCON Utility is an easy-to-use tool designed for communicating with DCON protocol I/O modules.

Step 1: Get the DCON Utility



DCON_Uti...

The DCON Utility can be obtained from companion CD or our FTP site:
CD:\Napos\8000\NAPDOS\Driver\DCON_Utility\setup\

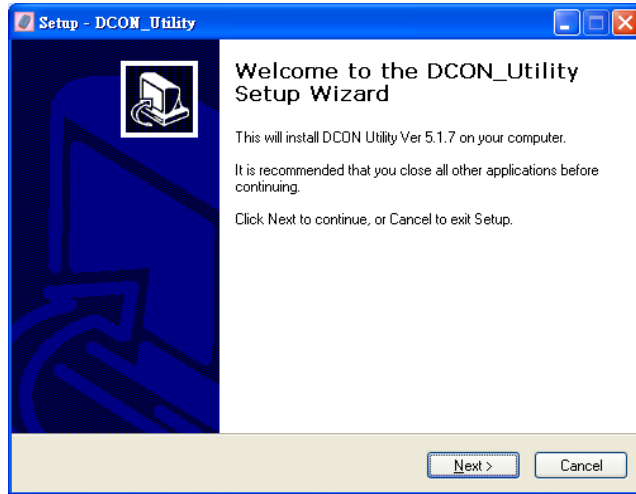
http://ftp.icpdas.com/pub/cd/8000cd/napos/driver/dcon_utility/

Step 2: Follow the prompts to complete the installation



dcon_utility...

After the installation has been completed, there will be a new short-cut for DCON Utility on the desktop.



5 Using DCON Utility to Configure I/O Modules

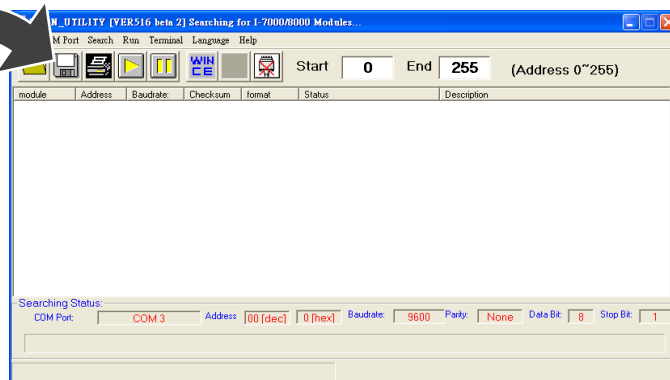
To configure the I/O modules, a communication must be made with the I-8410/I-8810 via DCON Protocol. The DCON Utility is the DCON Protocol Utility that can be used to make the communication between the I-8410/I-8810 and PC.

Step 1: Run the DCON Utility



dcon_utility...

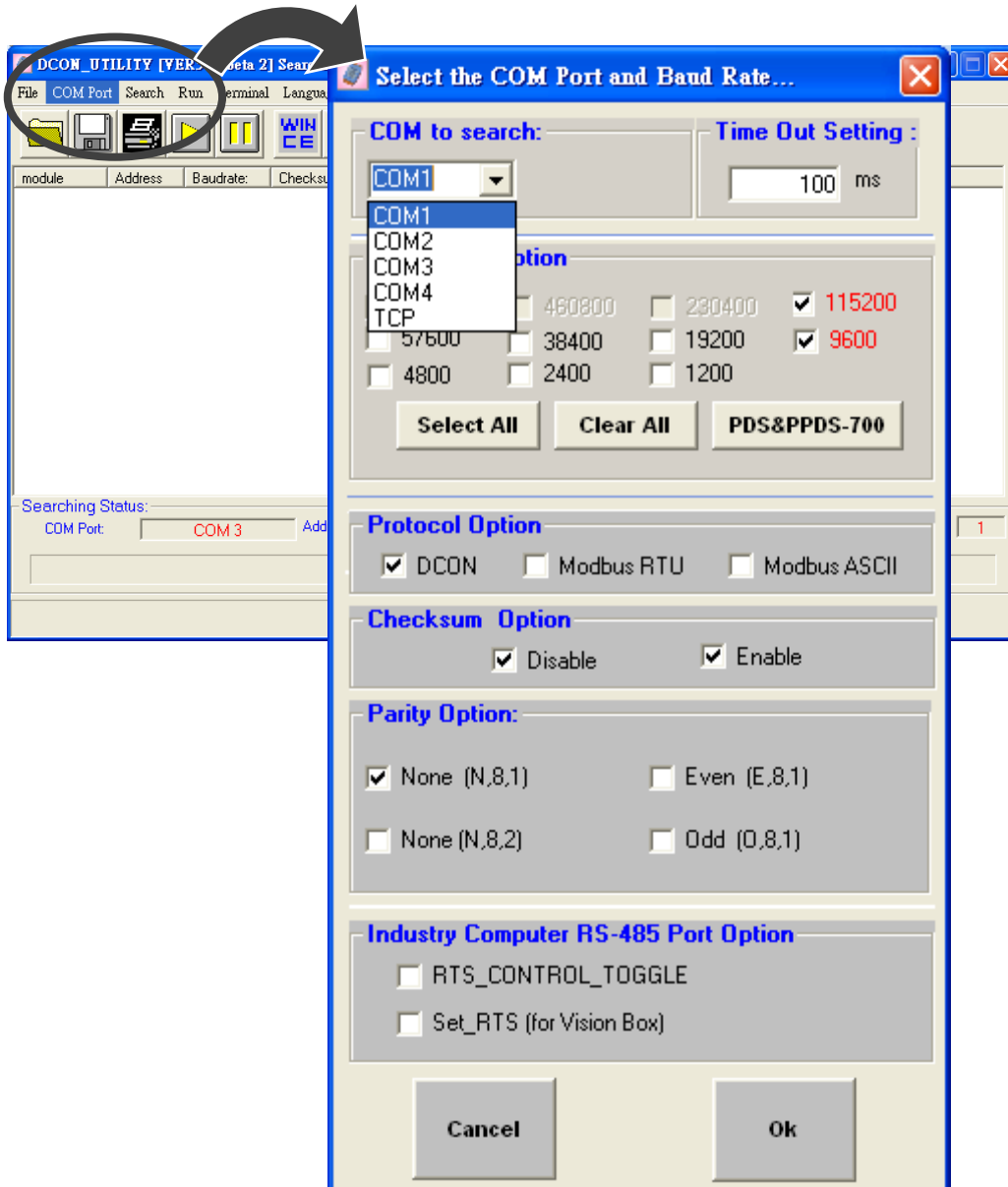
Double-click the DCON Utility shortcut on your desktop.



Step 2: Select COM port number which is used for connection

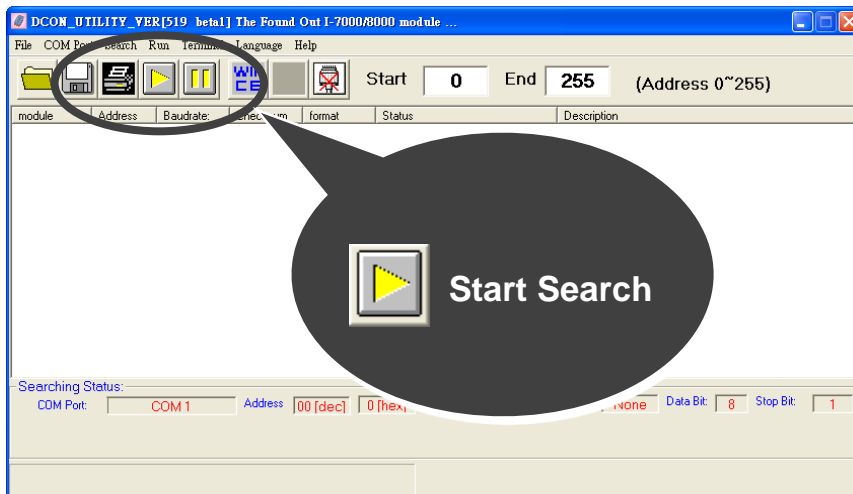
Click “COM Port” from the menu, a dialog box will appear.

In the dialog box, select COM port number which is used for connection between I-8410/I-8810 and PC.



Step 3: Search the I/O Modules

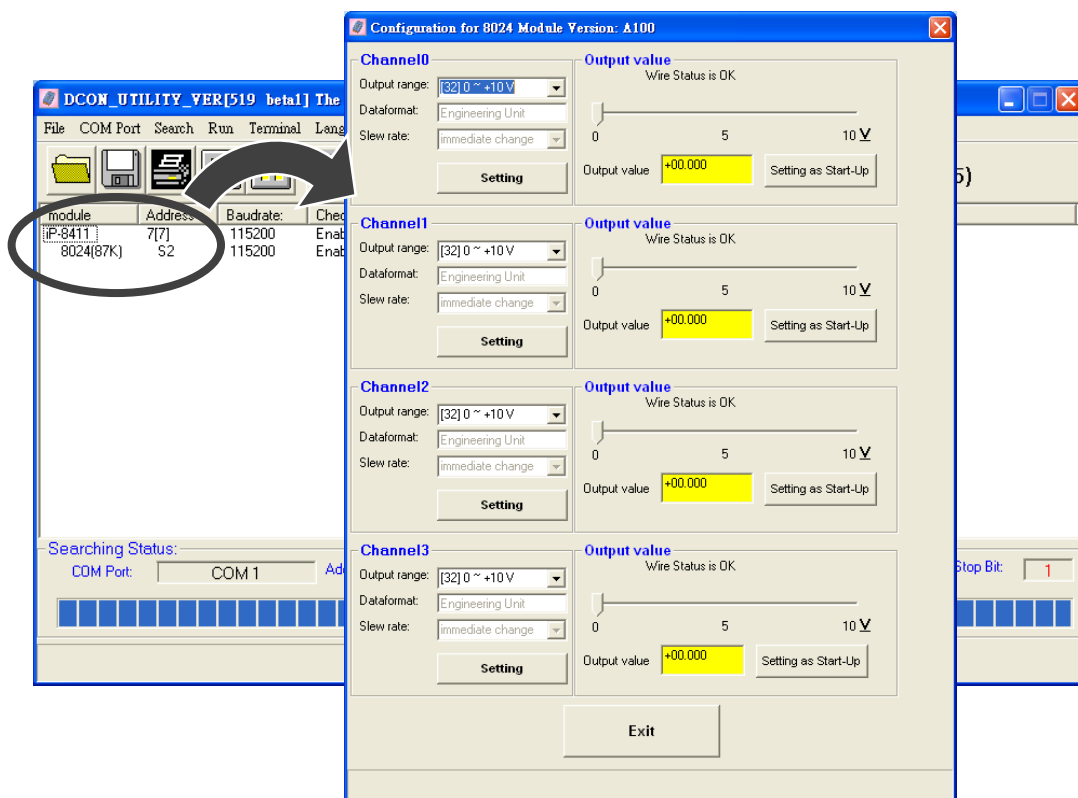
Click "Start Search" button from the toolbox to search the I/O modules.



Step 4: Click on the module name to enter the configuration form

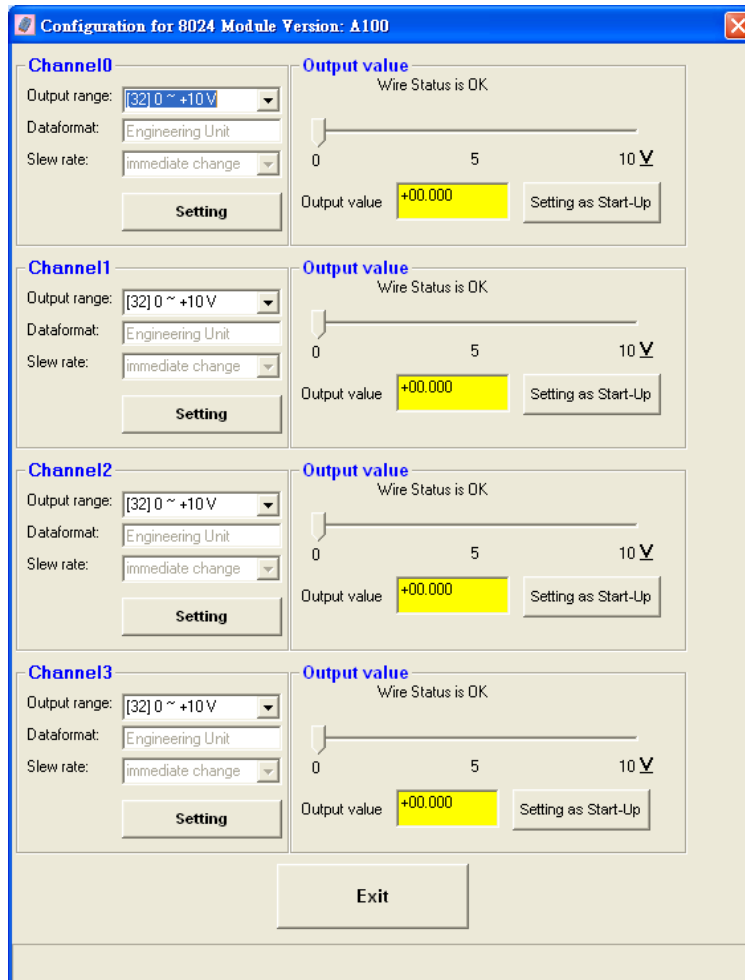
After searching has been completed, that will display a list of the I-8410/I-8810 and its expansion I/O modules.

Click on the name of the module to enter the configuration form.



Step 5: Configure the I/O module

In the dialog box, set the configuration parameters of I/O modules.



Additional Information

After you have finished configuring the I/O modules, then you can start developing your own applications, for detailed instructions and more applications, please refer to I-8410/I-8810 User Manual.