

Classification	General Setting FAQ on EZ Data Logger					No.	1-008-08
Author	Amber	Version	1.0.0	Date	2012/05/11	Page	1/13

How to set and log data to a remote SQL Server?

Applied to:

<i>Platform</i>	<i>OS Version</i>
<i>PC</i>	<i>Windows 98/NT/2000/XP/Vista</i>

EZ Data Logger can log data not only in local database but also to a remote SQL Server. You have to enable remote connection on SQL Server. The following steps will show you how to install \ set the SQL Server, and then set the SQL Server remote connection in EZ Data Logger.

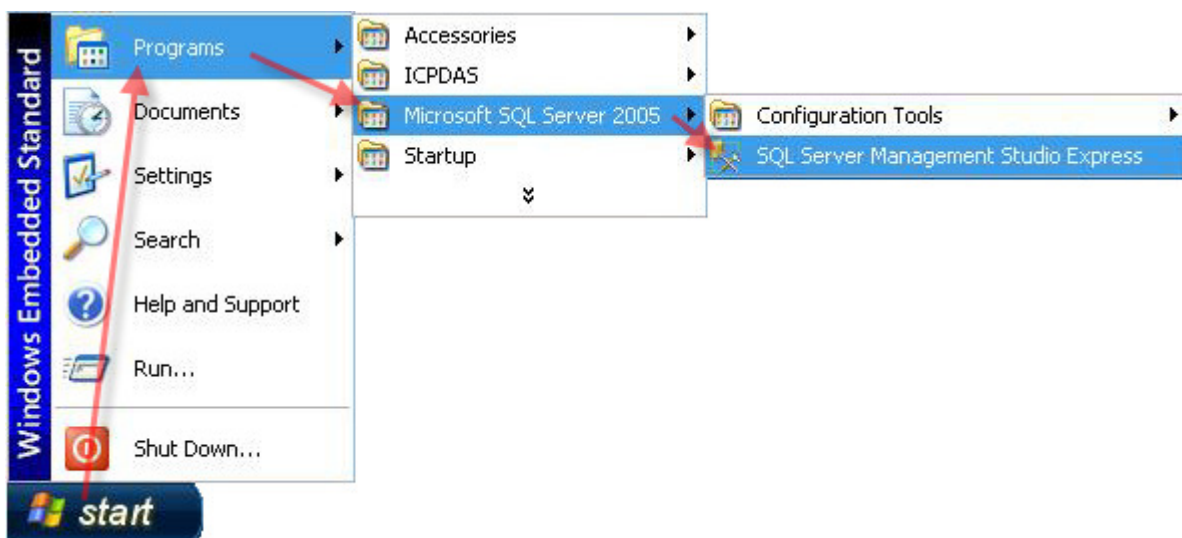
I. Install SQL Server Express 2005

Please download the setup file of SQL Server Express 2005 from Microsoft, and follow the recommendations to install SQL Server 2005 Express to your specified PC.

<http://www.microsoft.com/download/en/details.aspx?displaylang=en&id=15291>

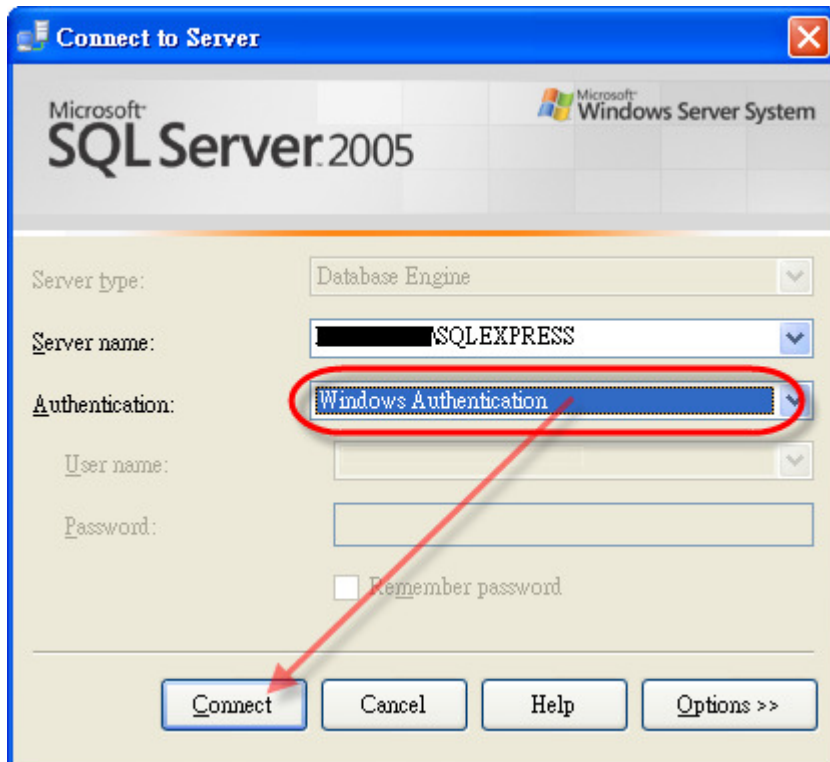
II. Login SQL Server By Both SQL Server Authentication And Windows Authentication

Step1 : Click **Start**→ Point to **Programs**→ Point to **Microsoft SQL Server 2005**→ Click **SQL Server Management Studio Express**.

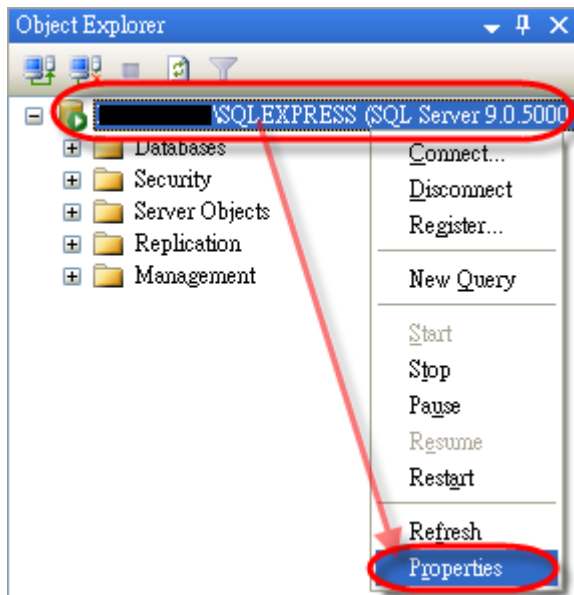


Classification	General Setting FAQ on EZ Data Logger				No.	1-008-08	
Author	Amber	Version	1.0.0	Date	2012/05/11	Page	2/13

Step2 : Login SQL Server 2005 with **Windows Authentication**.

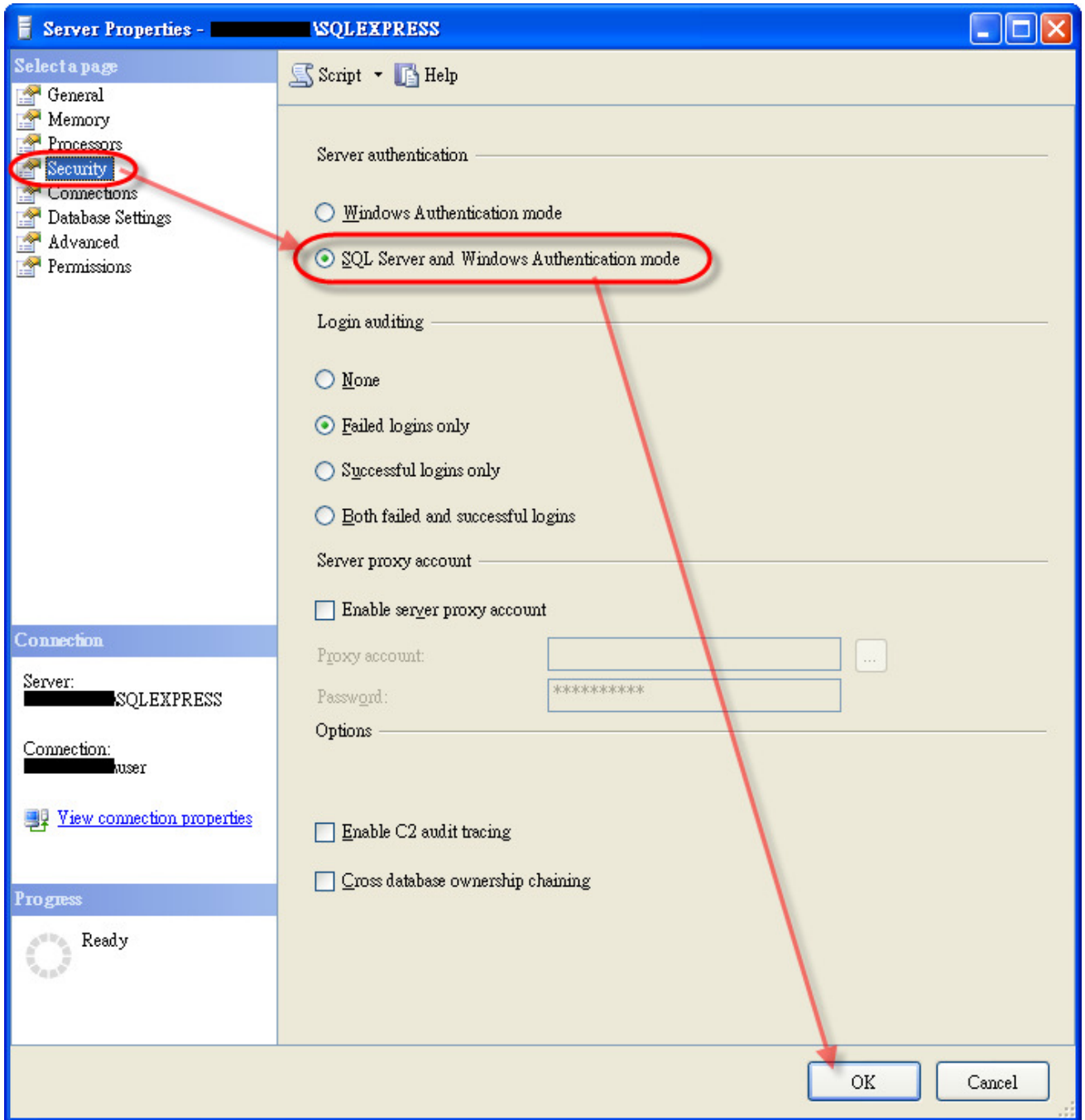


Step3 : Right-click the main database (host name \ SQLEXPRESS) and select **Properties**.



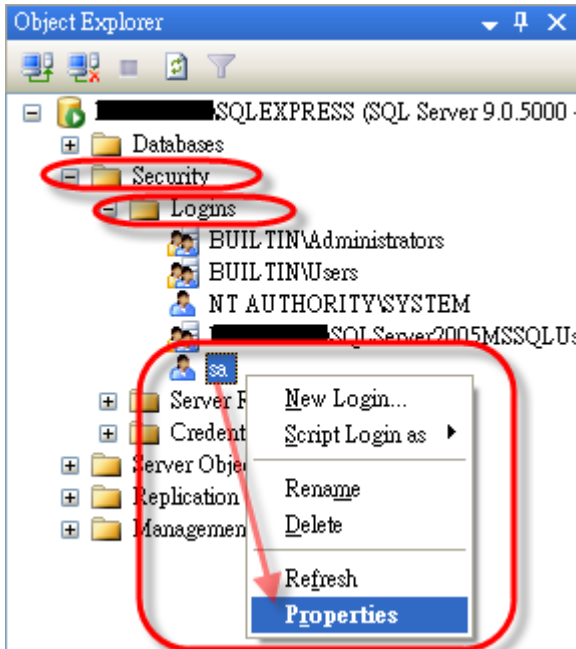
Classification	General Setting FAQ on EZ Data Logger				No.	1-008-08	
Author	Amber	Version	1.0.0	Date	2012/05/11	Page	3/13

Step4 : On the page “Server Properties” select **Security** options→ In “Server authentication” select **SQL Server and Windows Authentication mode**→ Click **OK** button.

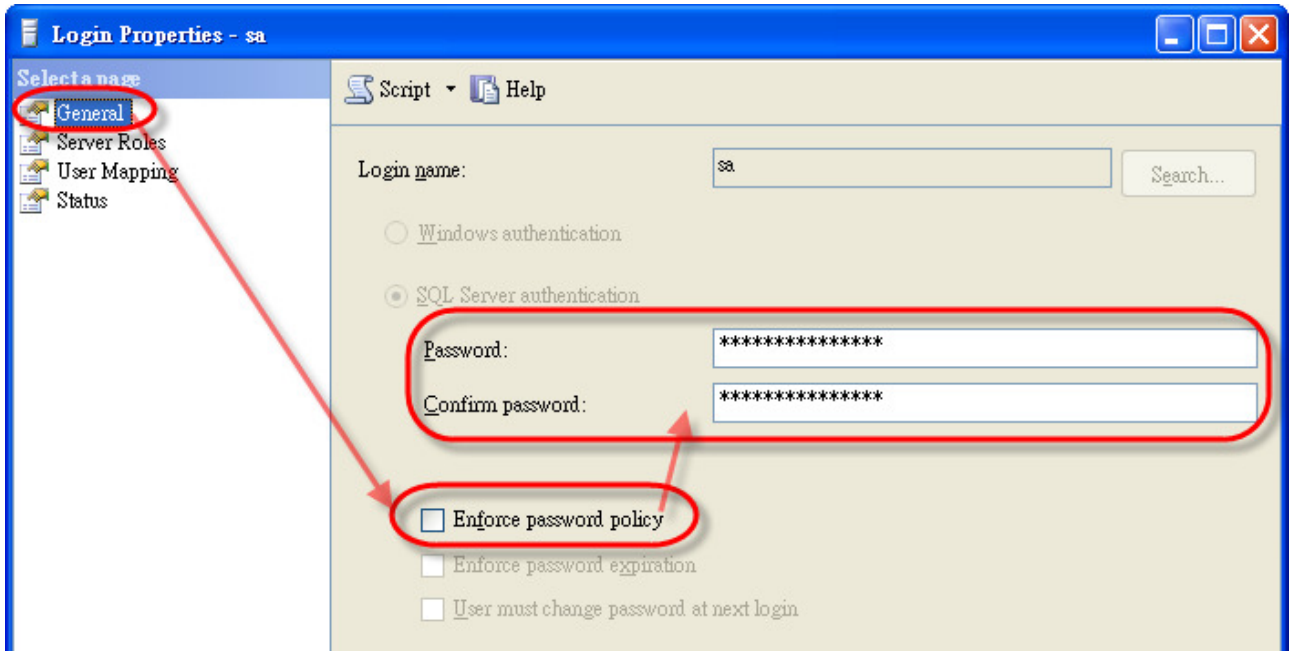


Classification	General Setting FAQ on EZ Data Logger				No.	1-008-08	
Author	Amber	Version	1.0.0	Date	2012/05/11	Page	4/13

Step5 : Return to “Object Explorer”, and then expand **Security** option→ Expand **Logins** option→ Right-click the account: **sa**, and then select **Properties**.

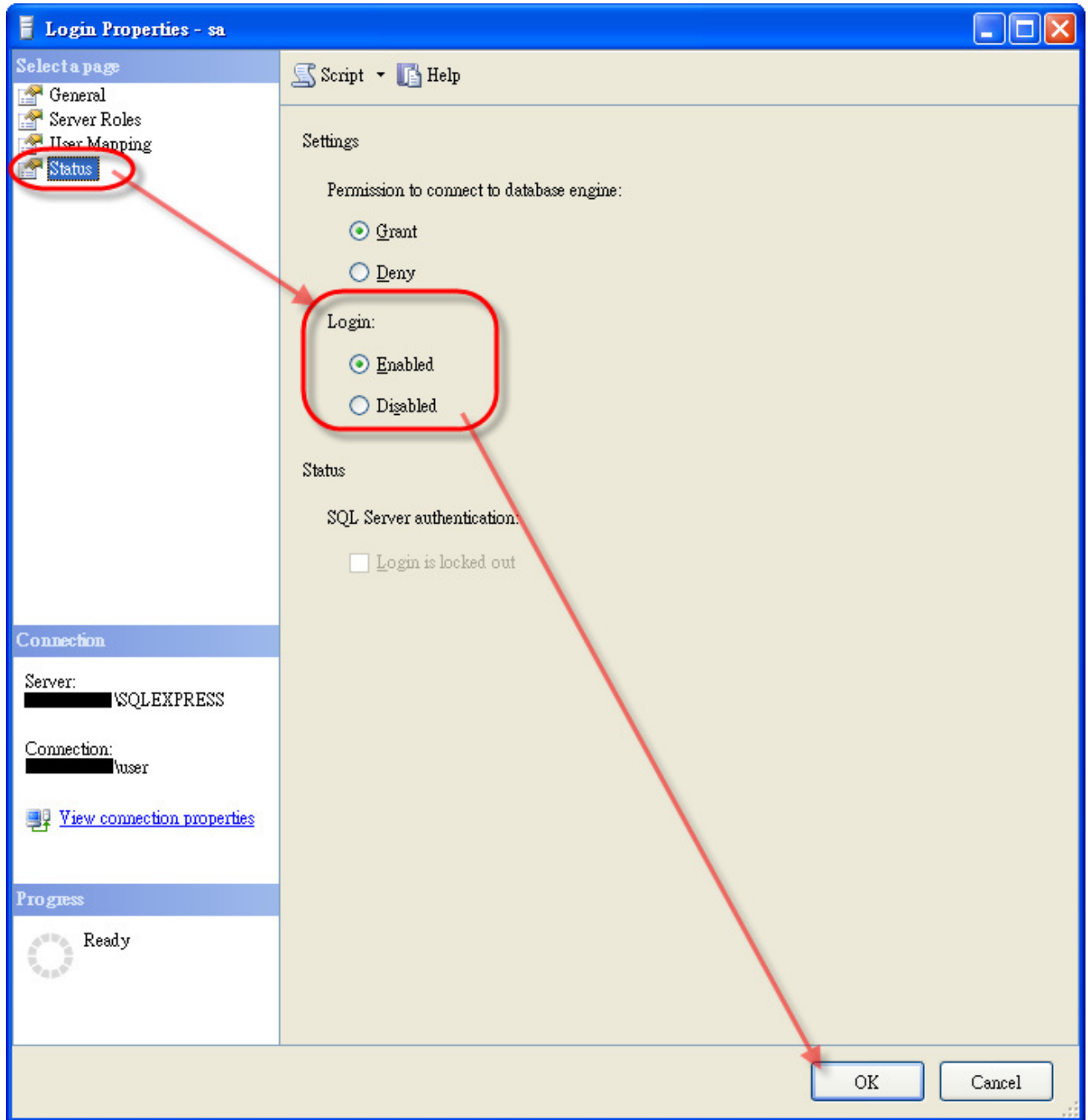


Step6 : On the page “Login Properties” select **General** option→ Cancel the selection: **Enforce password policy** to change password→ Input your new password for **sa** account.



Classification	General Setting FAQ on EZ Data Logger				No.	1-008-08	
Author	Amber	Version	1.0.0	Date	2012/05/11	Page	5/13

Step7 : On the same page “Login Properties” select **Status** option→ In the “Login” status select **Enable**→ Click **OK** button.



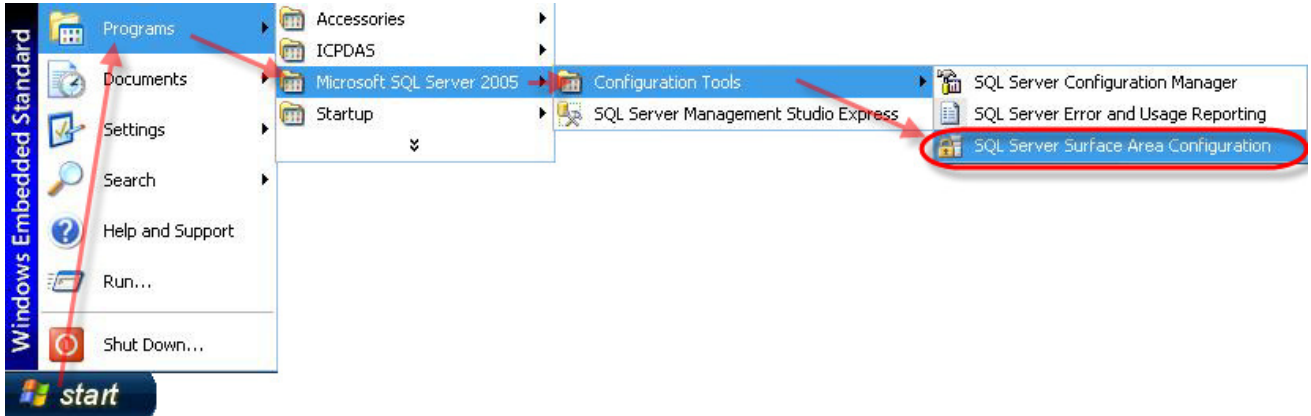
Step8 : Reboot the SQL Server or PC.

Right-click the main database (host name \ SQLEXPRESS) and select **Restart**.

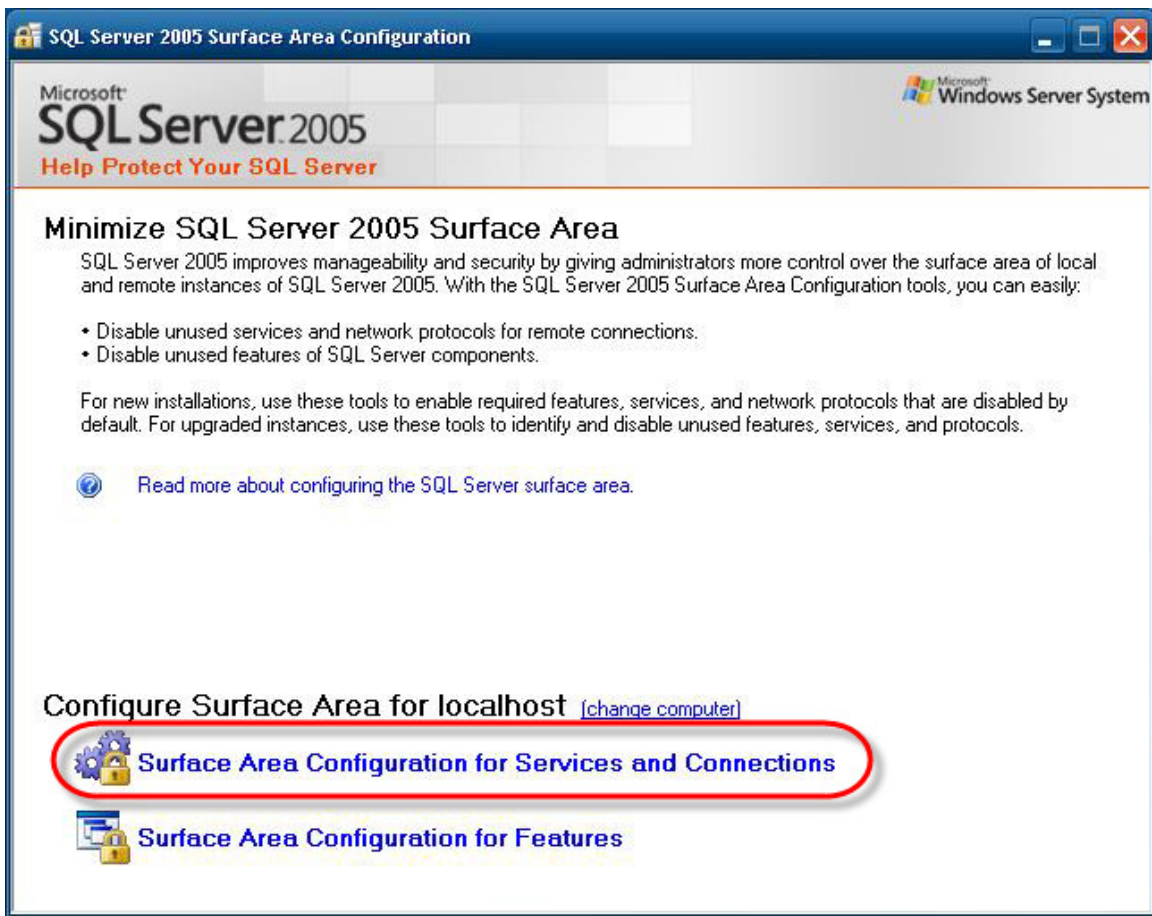
Classification	General Setting FAQ on EZ Data Logger				No.	1-008-08	
Author	Amber	Version	1.0.0	Date	2012/05/11	Page	6/13

III. Configure SQL Server 2005 To Allow Remote connections

Step1 : Click **Start**→ Point to **Programs**→ Point to **Microsoft SQL Server 2005**→ Point to **Configuration Tools**→ Click **SQL Server Surface Area Configuration**.

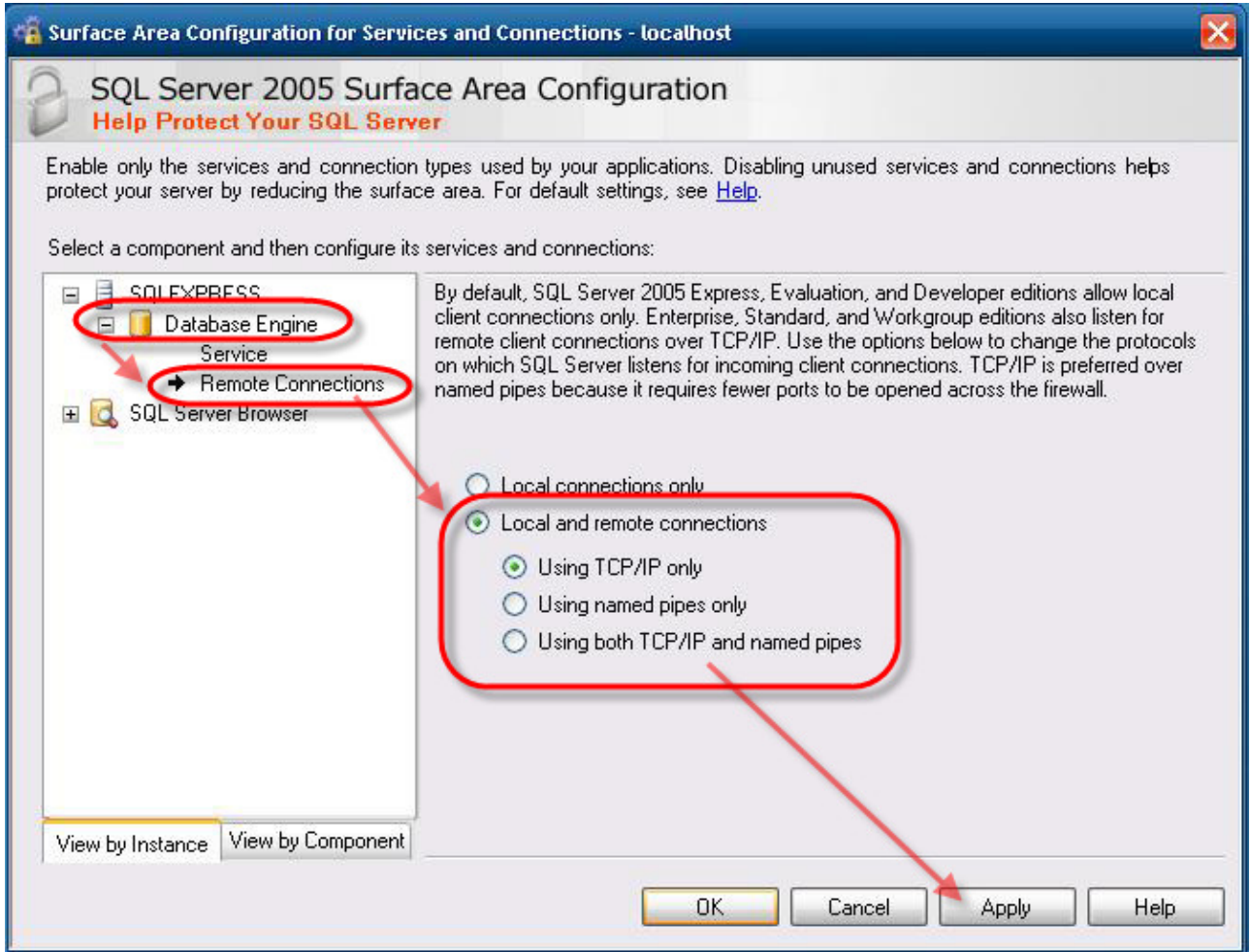


Step2 : On the “SQL Server 2005 Surface Area Configuration” page, click **Surface Area Configuration for Services and Connections**.



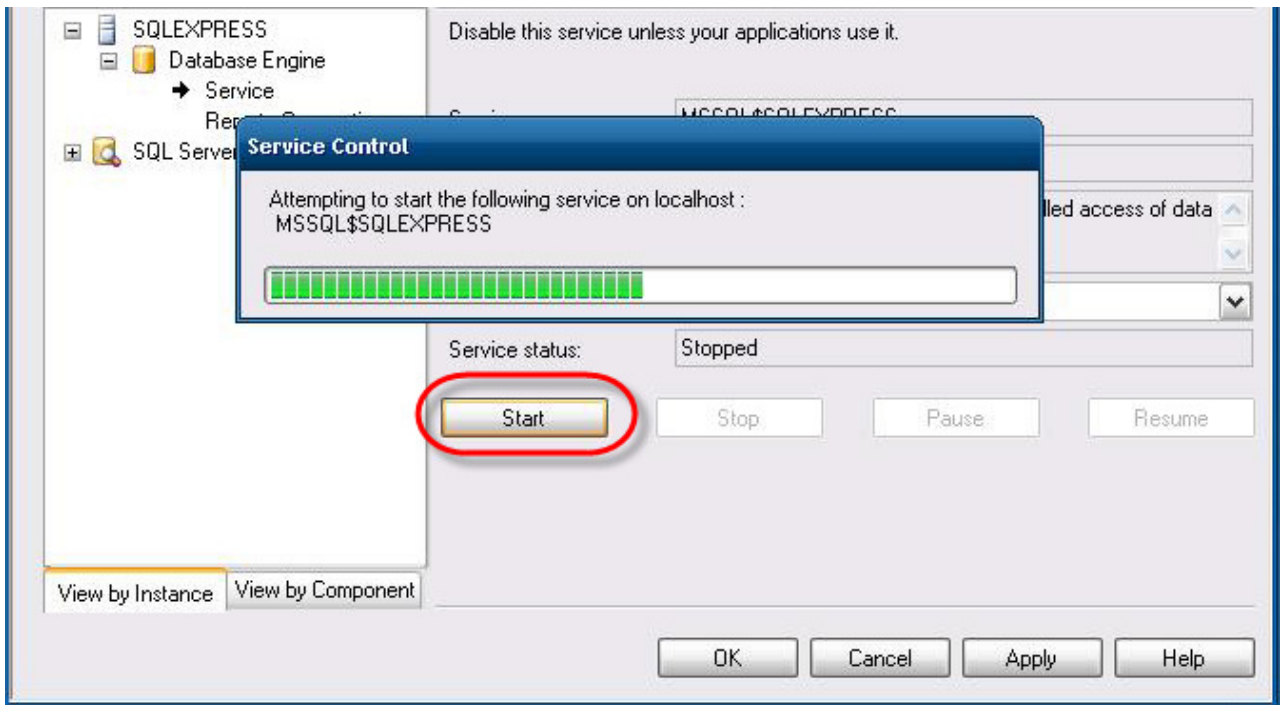
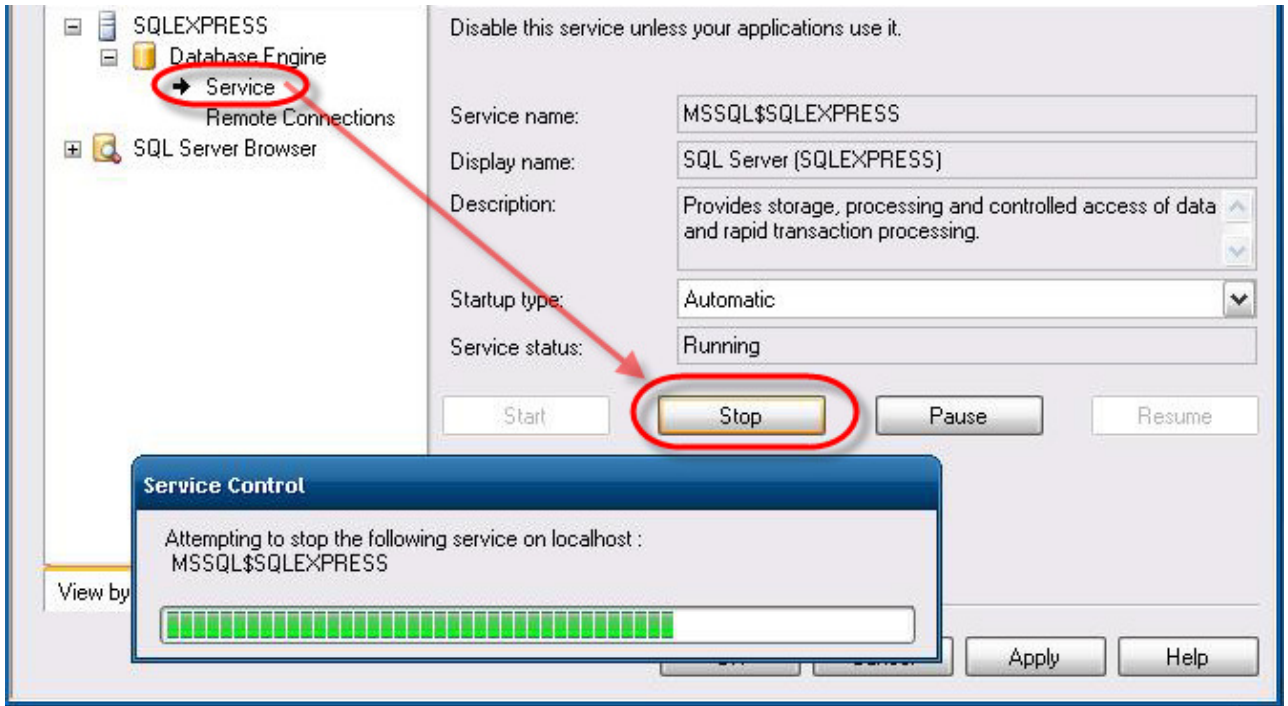
Classification	General Setting FAQ on EZ Data Logger				No.	1-008-08	
Author	Amber	Version	1.0.0	Date	2012/05/11	Page	7/13

Step3 : On the “Surface Area Configuration for Services and Connections” page, expand **Database Engine**→ Click **Remote connections**→ Click **Local and remote connections**→ Click **Only use TCP/IP**→ Click **Apply**.



Classification	General Setting FAQ on EZ Data Logger				No.	1-008-08	
Author	Amber	Version	1.0.0	Date	2012/05/11	Page	8/13

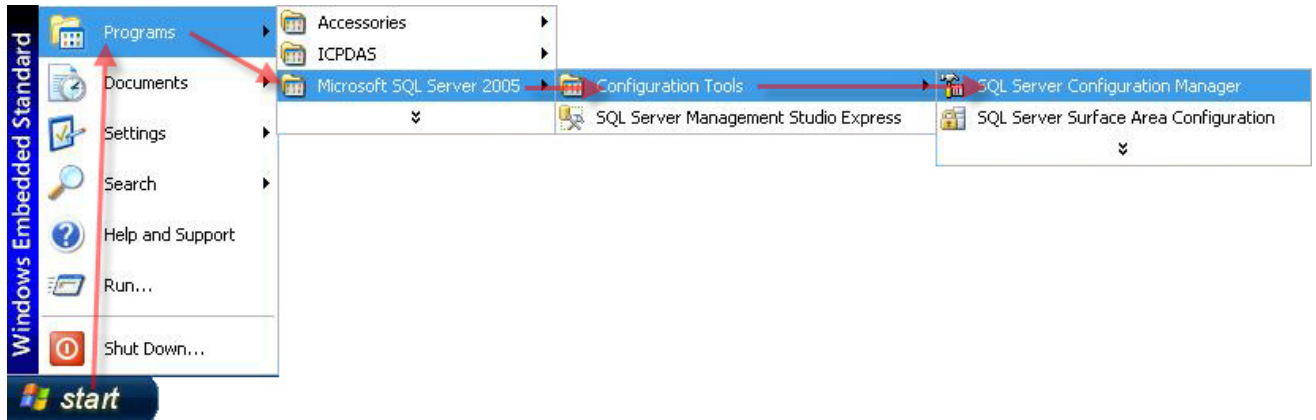
Step4 : On the “Surface Area Configuration for Services and Connections” page, expand **Database Engine**→ Click **Service**→ Click **Stop**→ Wait until the MSSQLSERVER service stops, and then click **Start** to restart the MSSQLSERVER service→ **OK**.



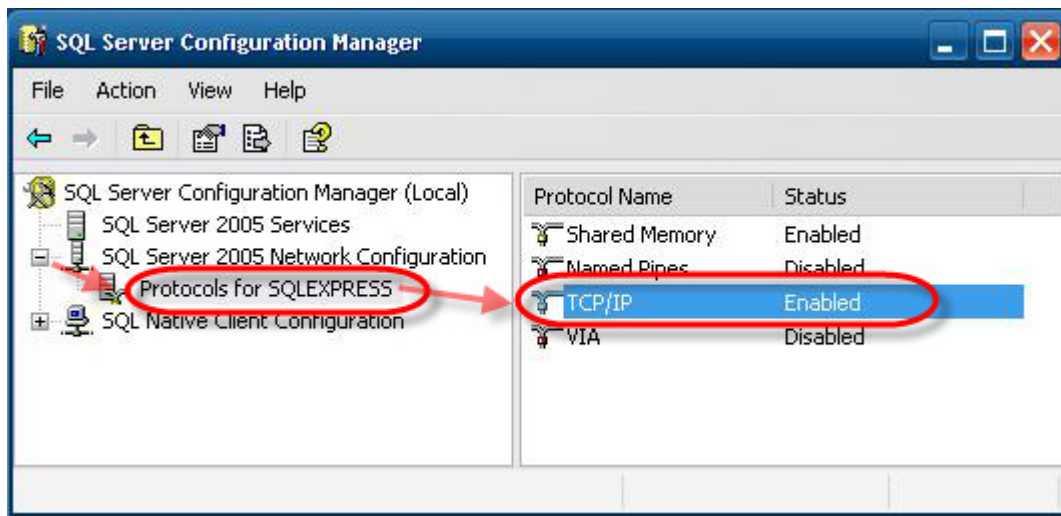
Classification	General Setting FAQ on EZ Data Logger				No.	1-008-08	
Author	Amber	Version	1.0.0	Date	2012/05/11	Page	9/13

IV. Set TCP Port To 1433

Step1 : Click **Start**→ Point to **Programs**→ Point to **Microsoft SQL Server 2005**→ Point to **Configuration Tools**→ Click **SQL Server Configuration Manager** .

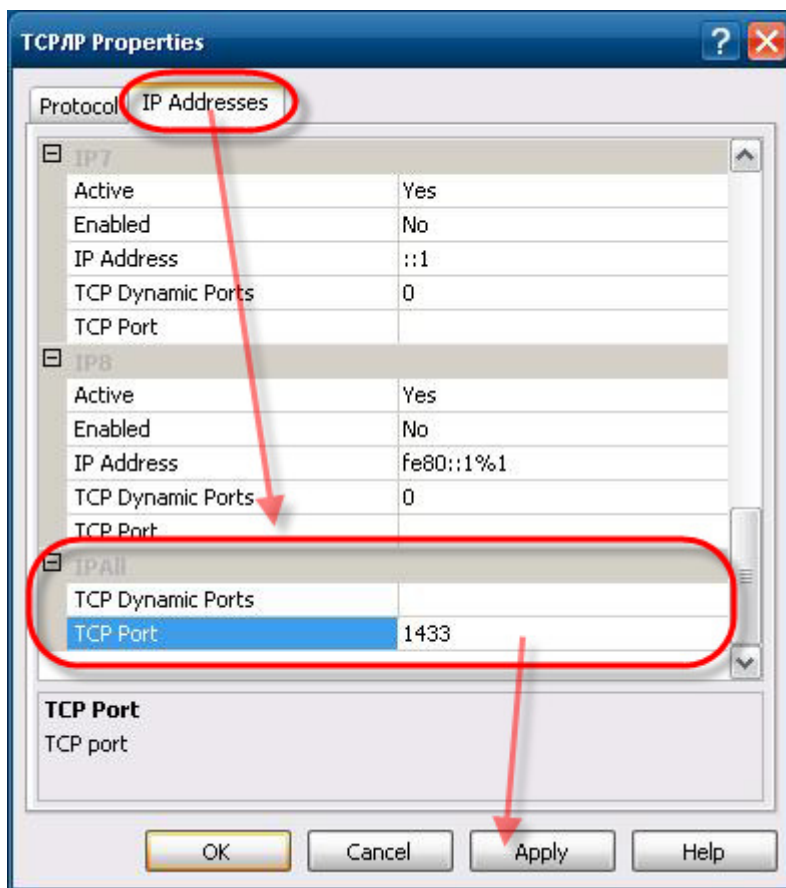
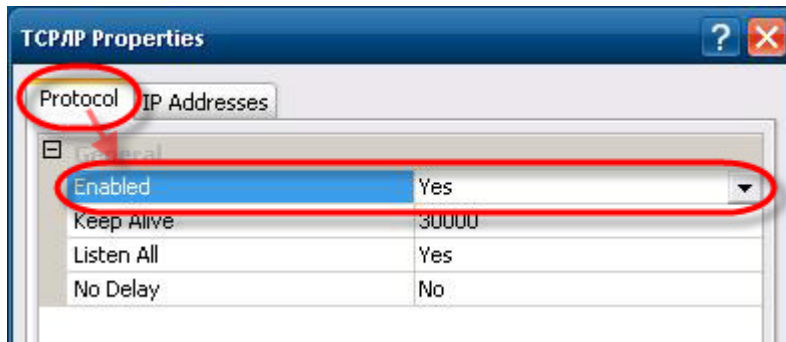


Step2 : Expand **SQL Server 2005 Network Configuration**→ Click **Protocols for SQLEXPRESS**→ Double click **TCP/IP** to set properties.



Classification	General Setting FAQ on EZ Data Logger				No.	1-008-08	
Author	Amber	Version	1.0.0	Date	2012/05/11	Page	10/13

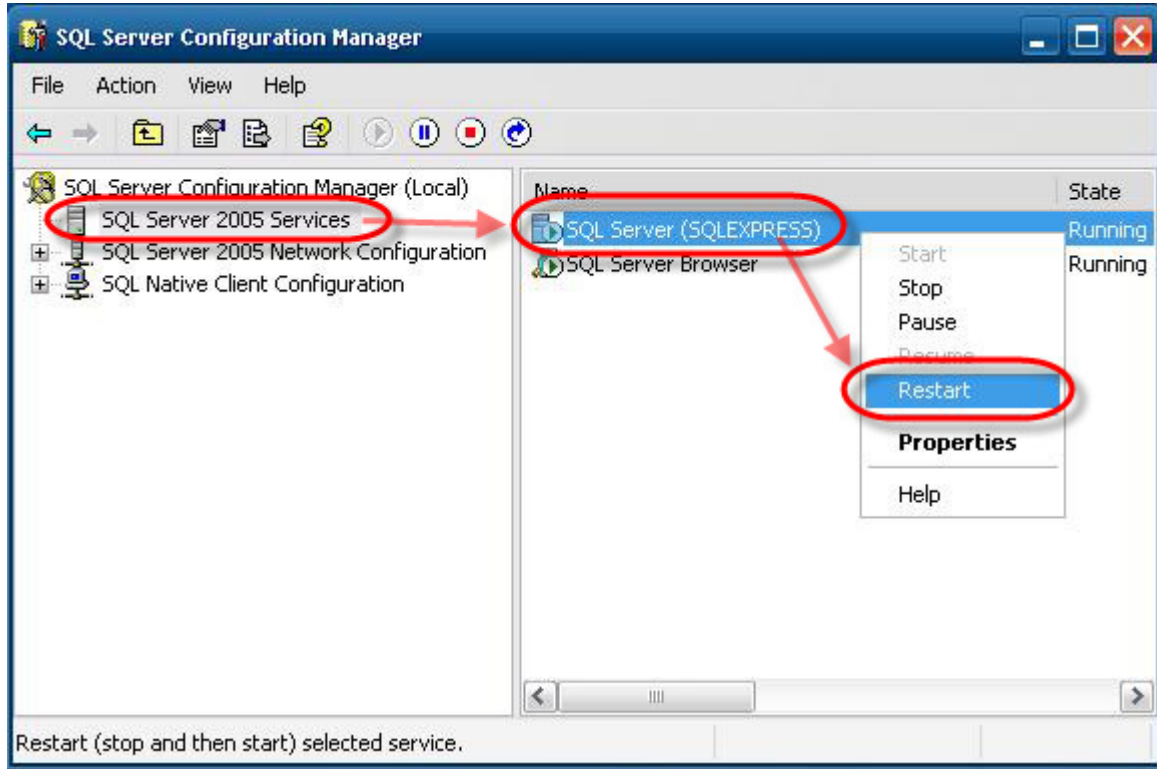
Step3 : Set **Enabled** to **Yes**, and under the “IP Addresses” tab, clear all the **TCP Dynamic Ports** entries (set them blank), and set **TCP Port** (under IP All) to **1433**, and click **Apply**. We are fixing the port, which means SQL Browser service can be stopped (in fact, this is a security best practice). You may need to use another port number if you have other versions/instances of SQL Server running.



Classification	General Setting FAQ on EZ Data Logger				No.	1-008-08	
Author	Amber	Version	1.0.0	Date	2012/05/11	Page	11/13

Step4 : Restart the SQL Express Service to active the new configuration.

Click **SQL Server 2005 Services**→ Right-click **SQL Server (SQLEXPRESS)** and select **Restart**.



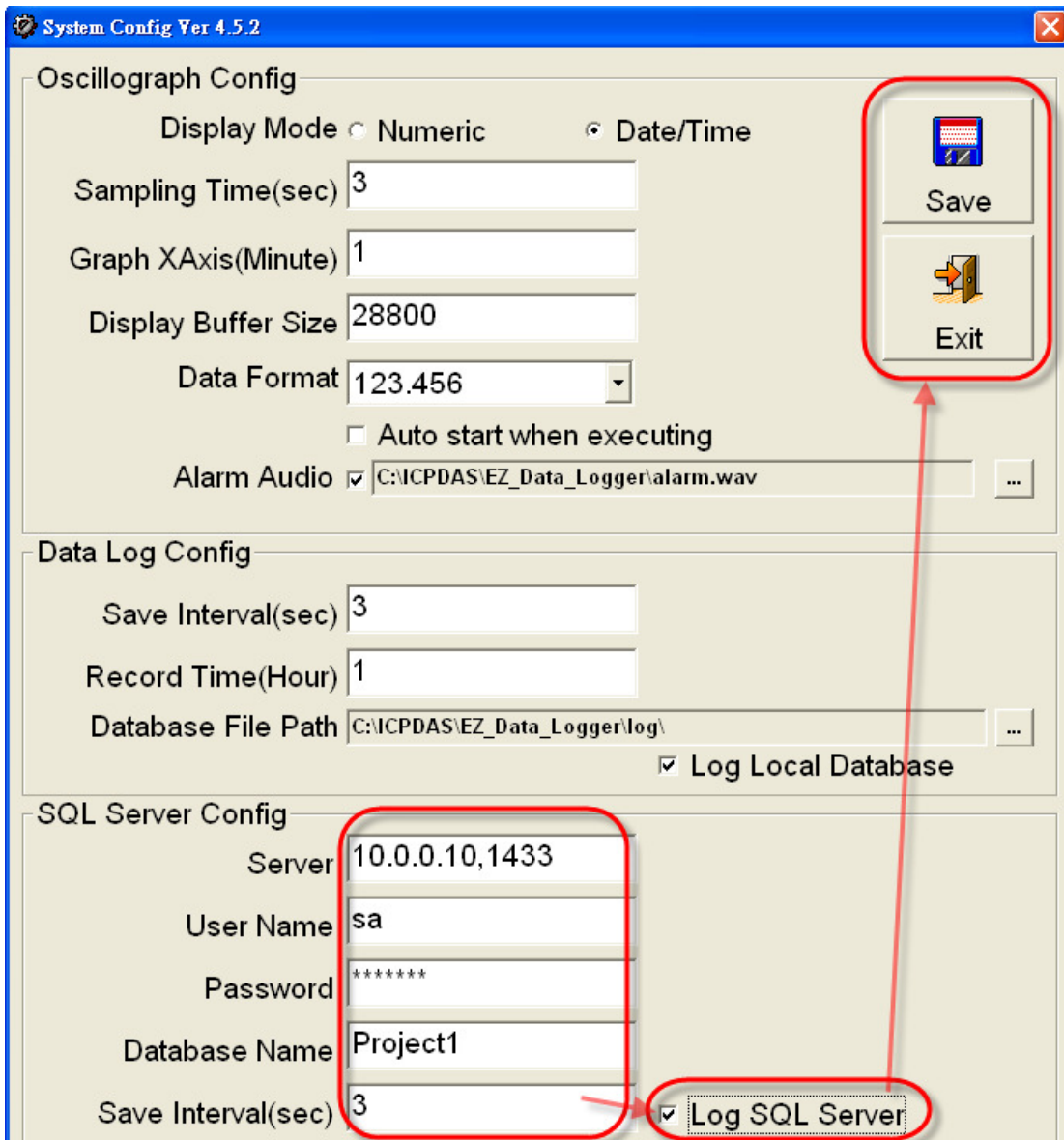
Classification	General Setting FAQ on EZ Data Logger				No.	1-008-08	
Author	Amber	Version	1.0.0	Date	2012/05/11	Page	12/13

V. SQL Server Connection Setting In EZ Data Logger

Step1 : Open EZ Data Logger, and then from the button list click **System Config** button.

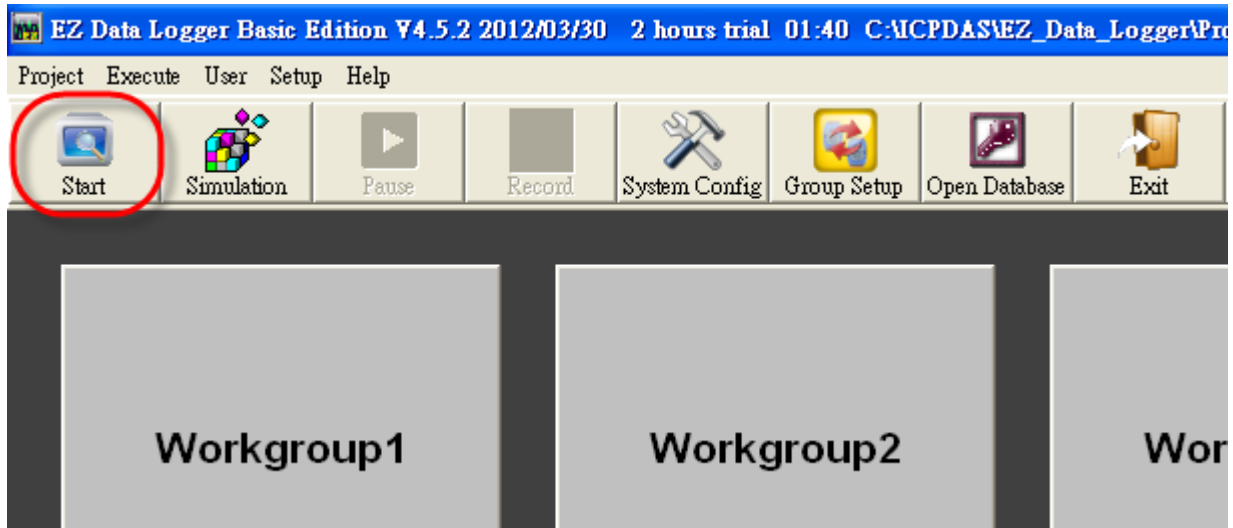


Step2 : Edit the connection setting→ Tick **Log SQL Server**→ Click **Save** button to save settings→ Click **Exit** to leave the “System Config” form.



Classification	General Setting FAQ on EZ Data Logger				No.	1-008-08	
Author	Amber	Version	1.0.0	Date	2012/05/11	Page	13/13

Step3 : From the button list click the **Start** button to execute the project and log data to SQL Server.



Tips and warnings :

The following table shows the description of the properties that you need to use when configuring SQL server connection in EZ Data Logger.

Server	User can use the below connection string to connect to local or remote SQL Server. 1. Use the connection string to connect to local SQL Server. → .\SQLEXPRESS 2. Use the connection string to connect to assignable remote SQL Server. The IP means remote server's IP. → IP,1433 Ex: 192.168.0.133,1433
User Name	Login account.
Password	Login password.
Database Name	User define database name.
Save Interval(sec)	The time interval to save to the SQL Server. The unit of time interval is second.