

Classification	General Setting FAQ on EZ Data Logger				No.	1-005-05	
Author	Amber	version	1.0.0	Date	2012/05/11	Page	1/20

## How to customize the layout component?

Applied to:

<i>Platform</i>	<i>OS version</i>
<i>PC</i>	<i>Windows 98/NT/2000/XP/Vista</i>

EZ Data Logger provides many layout component types. You can choose the channel layout component type · customize these component style and save your settings to a .ini file. In the “Modify Channel” form you can select the “.ini” files from the component profile menu to quickly change the component style. You can double-click the channel in the “Workgroup Setting” form to set the properties of the channel. The channel property is displayed as the below picture ↓

Channel List

AI List	AO List	DI List	DO List
Counter List	Freq List	Virtual Channel	Control Logic
Contact List	Web Camera		

Operation Demo	Description
VC0 + 1	Up count timer
(AI3 + AI4) / 2	Average
Abs(AI5)	Absolute Value Function
DO4 And DO5	Boolean operator

Nickname	Tag	Location	Init Value	Operation	Description
VC0	VC0	VC0	0	VC0 * 1	VC0

The following section describes the style settings of the various components.



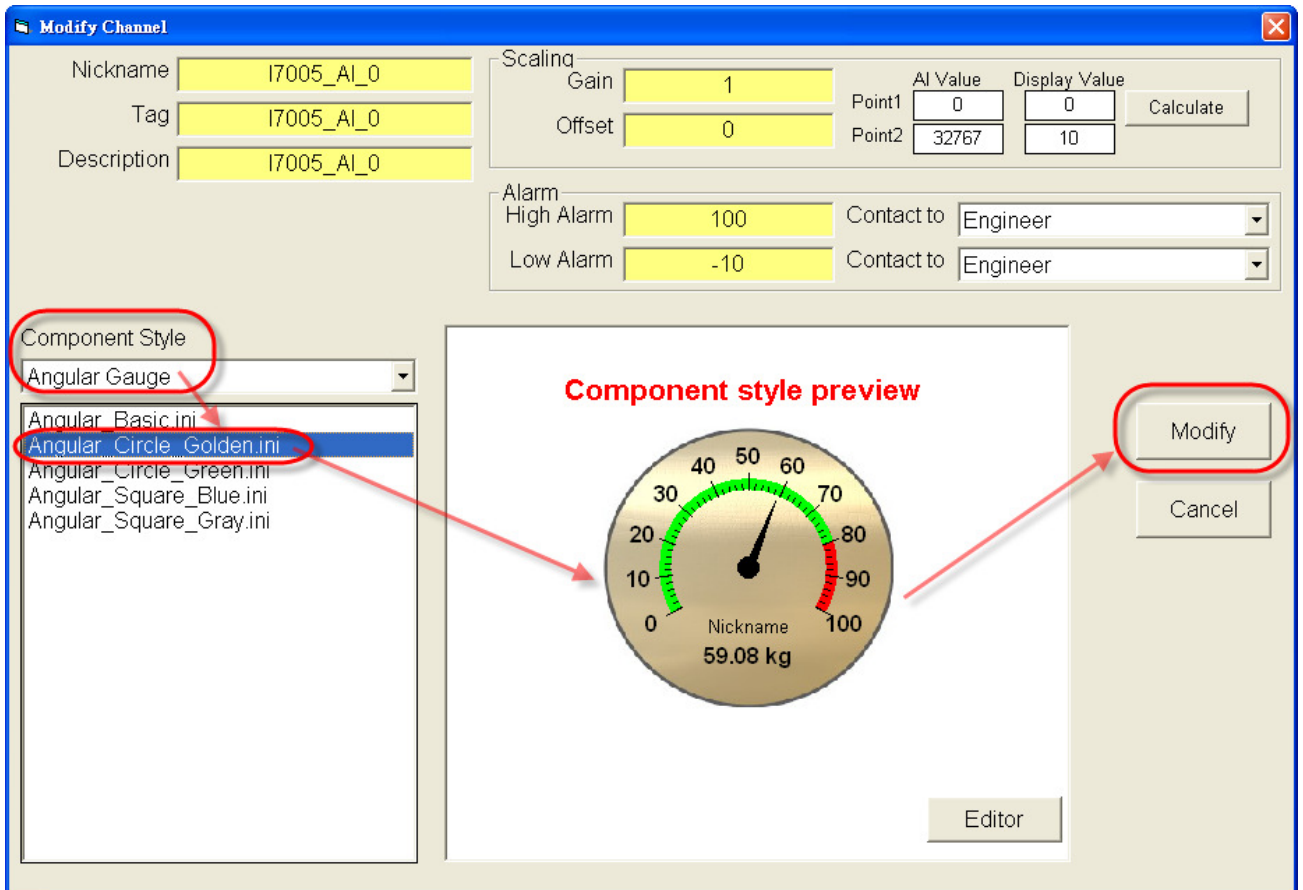
Classification	General Setting FAQ on EZ Data Logger				No.	1-005-05	
Author	Amber	version	1.0.0	Date	2012/05/11	Page	2/20

## I. Angular Gauge

You can set the “Angular Gauge” component for AI、AO、VC、Freq channel to show module values or output AO values, and its background color/pictures can be changed. You can select the default setting files from the component profile menu or customize it. Please refer to the following steps:

➤ **Select the default setting file from the menu**

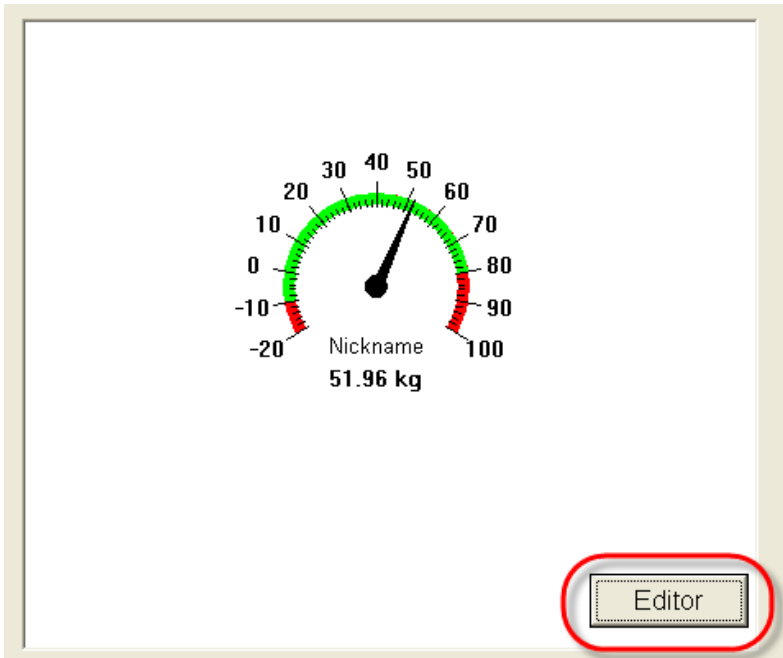
Select **Angular Gauge** component in the “Modify Channel” form→ From the menu choose **Angular\_Circle\_Golden.ini**→ Click the **Modify** button.



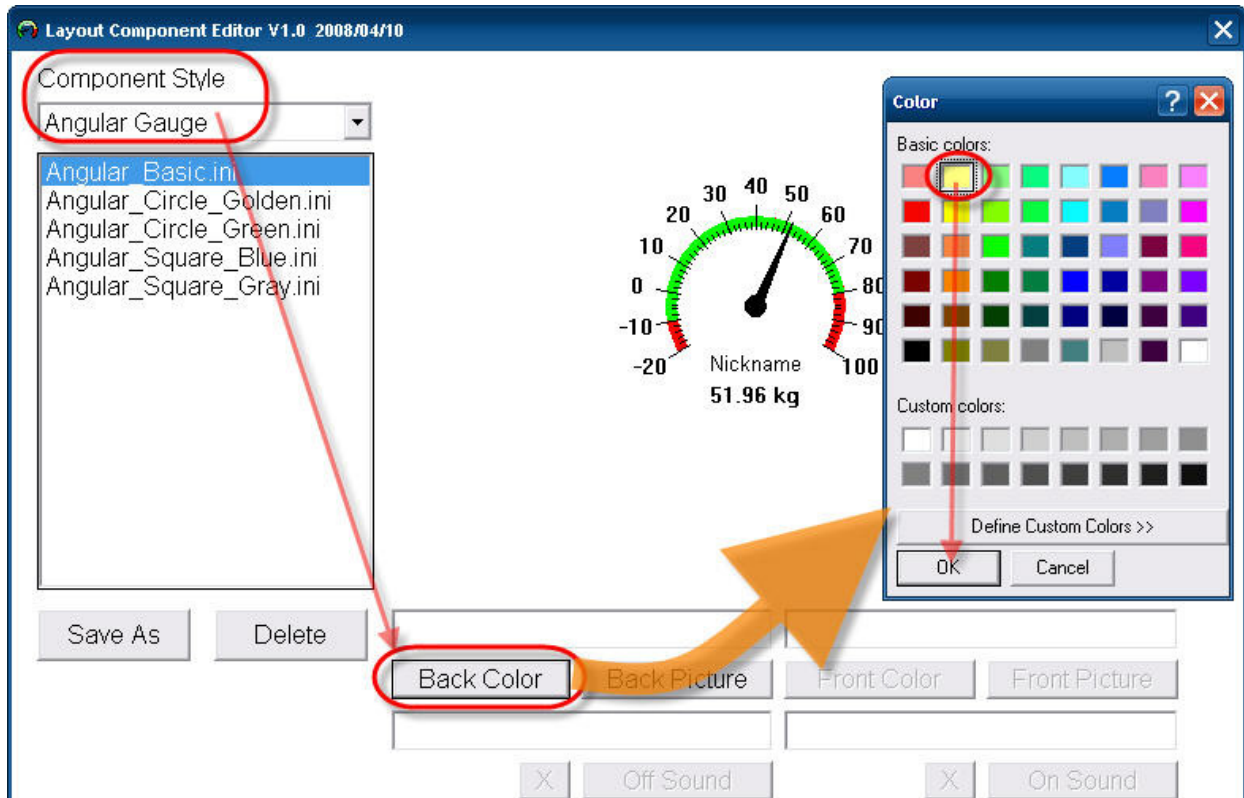
Classification	General Setting FAQ on EZ Data Logger				No.	1-005-05	
Author	Amber	version	1.0.0	Date	2012/05/11	Page	3/20

➤ **Customize the component**

**Step1** : Click the **Editor** button in the “Modify Channel” form.

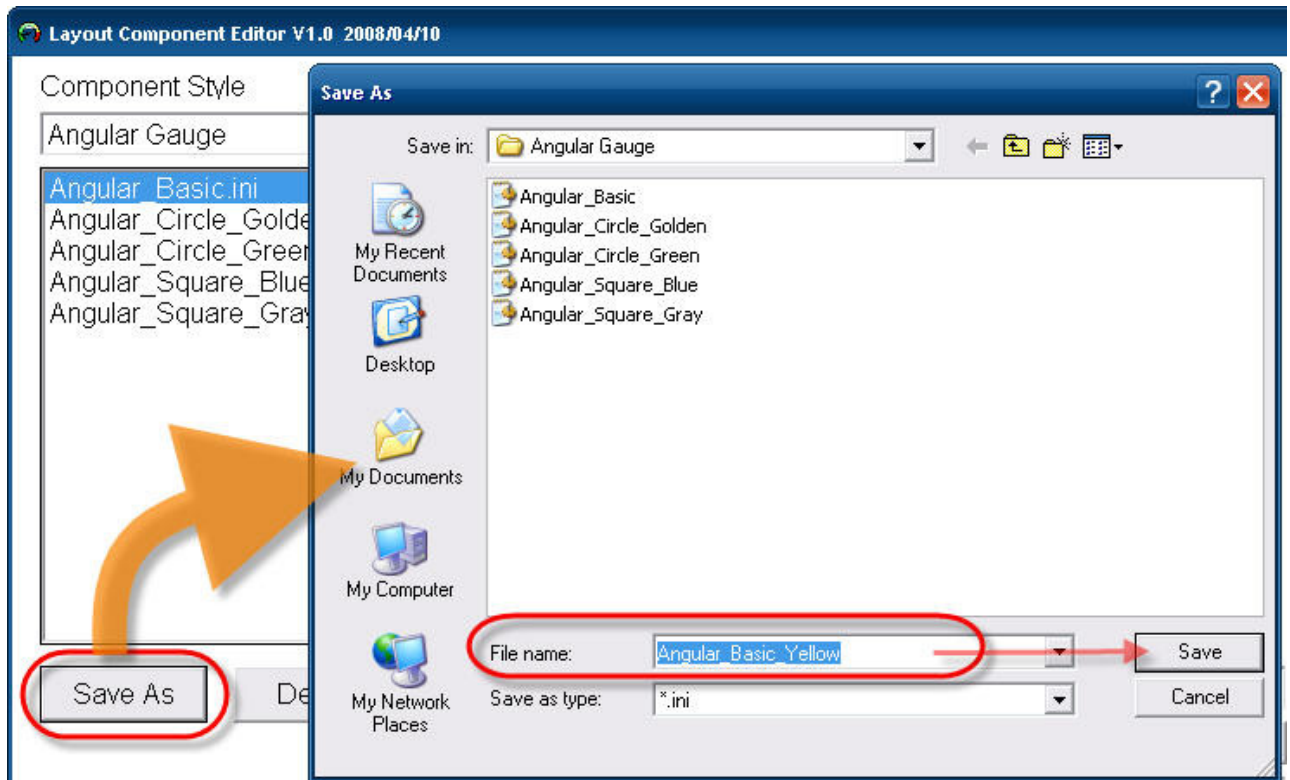


**Step2** : Select **Angular Gauge** component → Click the **Back Color** button → Select background color → Click the **OK** button

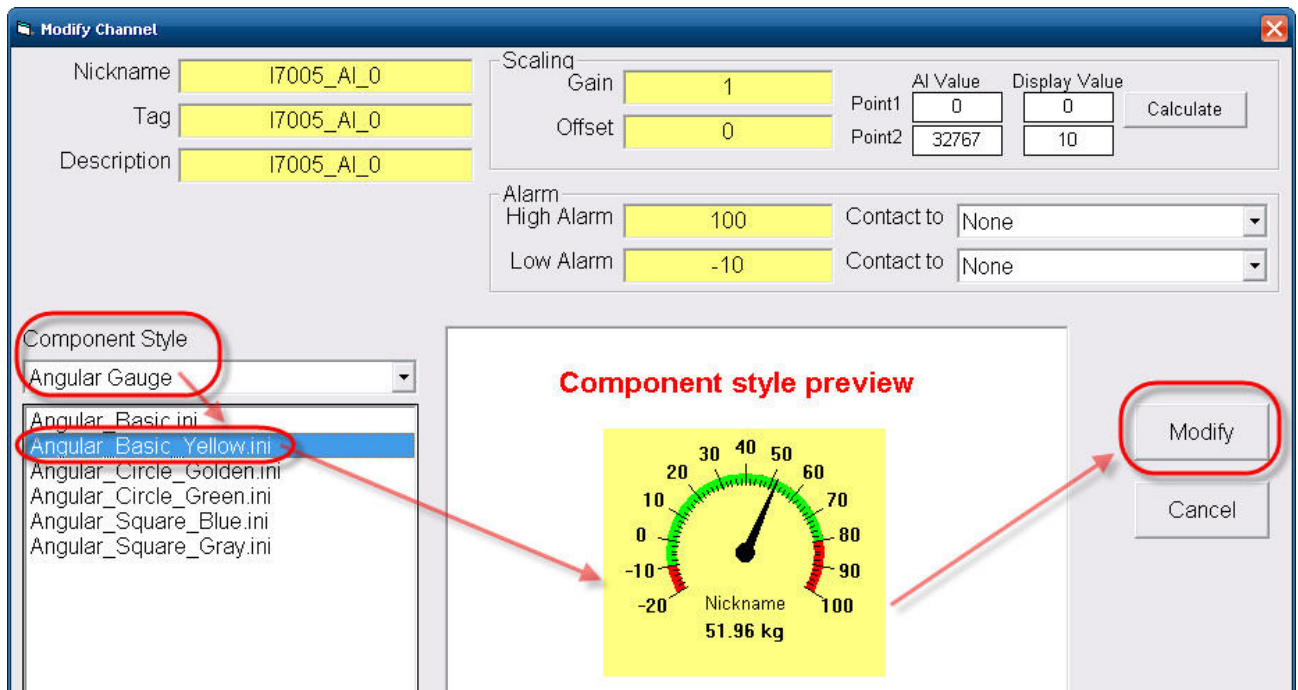


Classification	General Setting FAQ on EZ Data Logger				No.	1-005-05	
Author	Amber	version	1.0.0	Date	2012/05/11	Page	4/20

**Step3 :** Click the **Save As** button→ Enter the file name (Angular\_Basic\_Yellow) → **Save**.



**Step4 :** Select **Angular Gauge** component in the “Modify Channel” form→ Choose the new setting file (Angular\_Basic\_Yellow.ini) you added from the menu→ Click the **Modify** button.



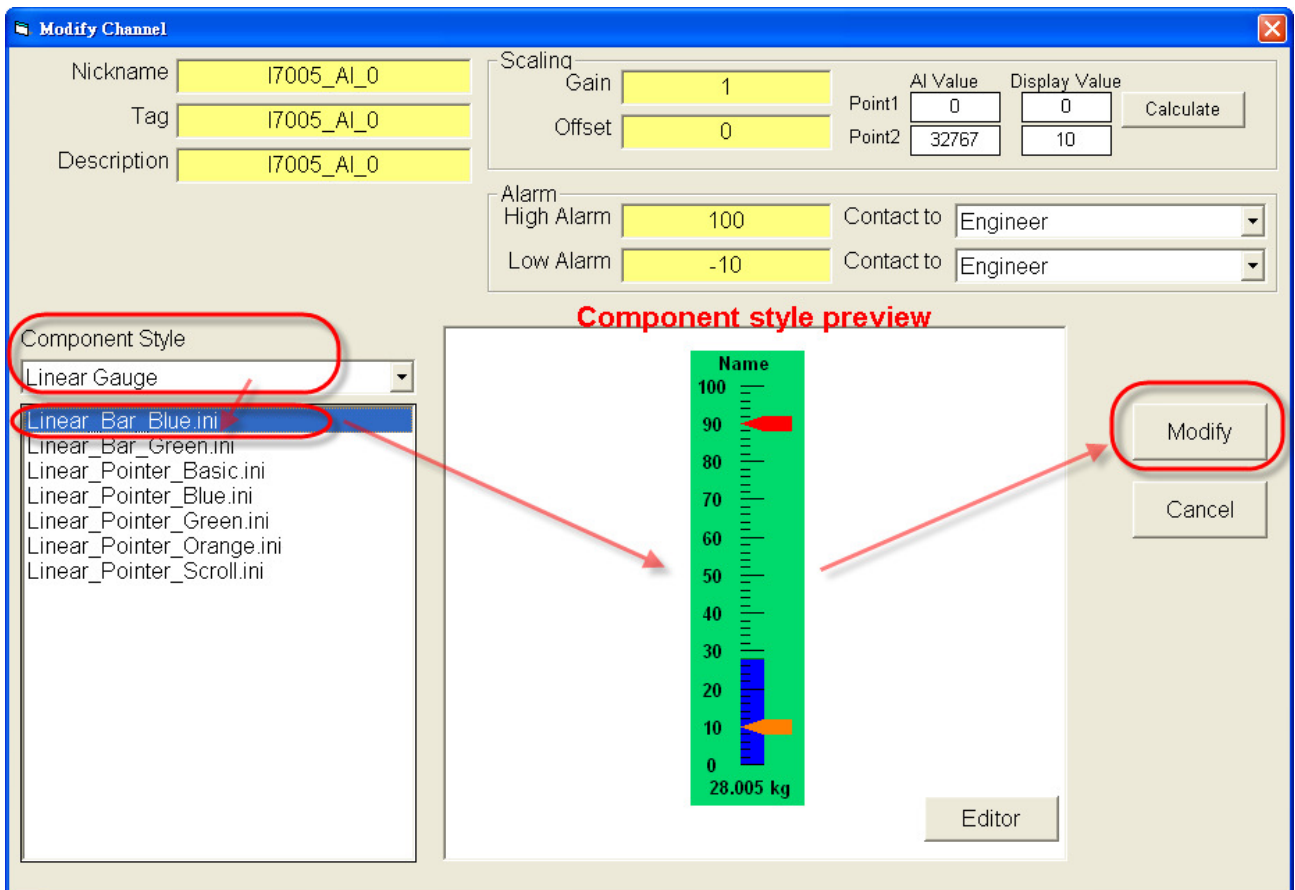
Classification	General Setting FAQ on EZ Data Logger				No.	1-005-05	
Author	Amber	version	1.0.0	Date	2012/05/11	Page	5/20

## II. Linear Gauge

You can set the “Linear Gauge” component for AI · AO · VC · Freq channel to show module values or output AO values, and its background color/pictures can be changed. You can select the default setting files from the component profile menu or customize it. Please refer to the following steps:

➤ **Select the default setting file from the menu**

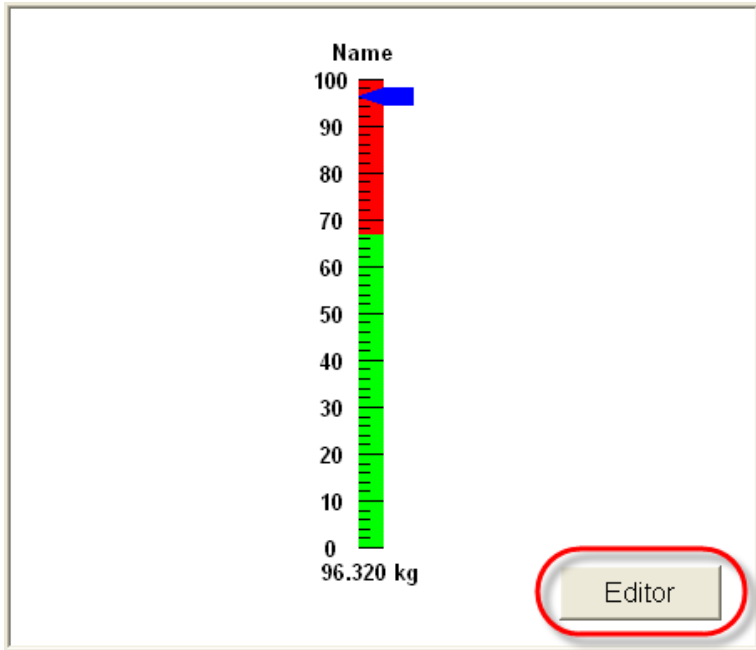
Select **Linear Gauge** component in the “Modify Channel” form → From the menu choose **Linear\_Bar\_Blue.ini** → Click the **Modify** button.



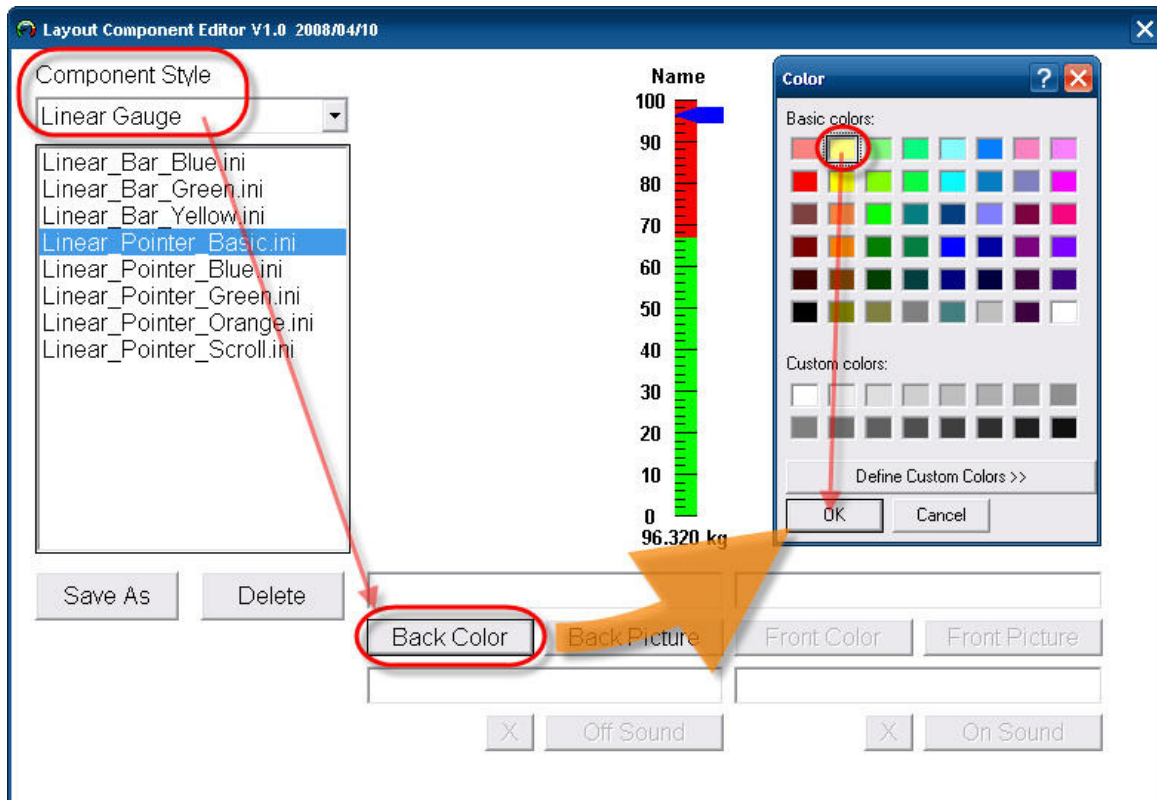
Classification	General Setting FAQ on EZ Data Logger				No.	1-005-05	
Author	Amber	version	1.0.0	Date	2012/05/11	Page	6/20

➤ **Customize the component**

**Step1** : Click the **Editor** button in the “Modify Channel” form.

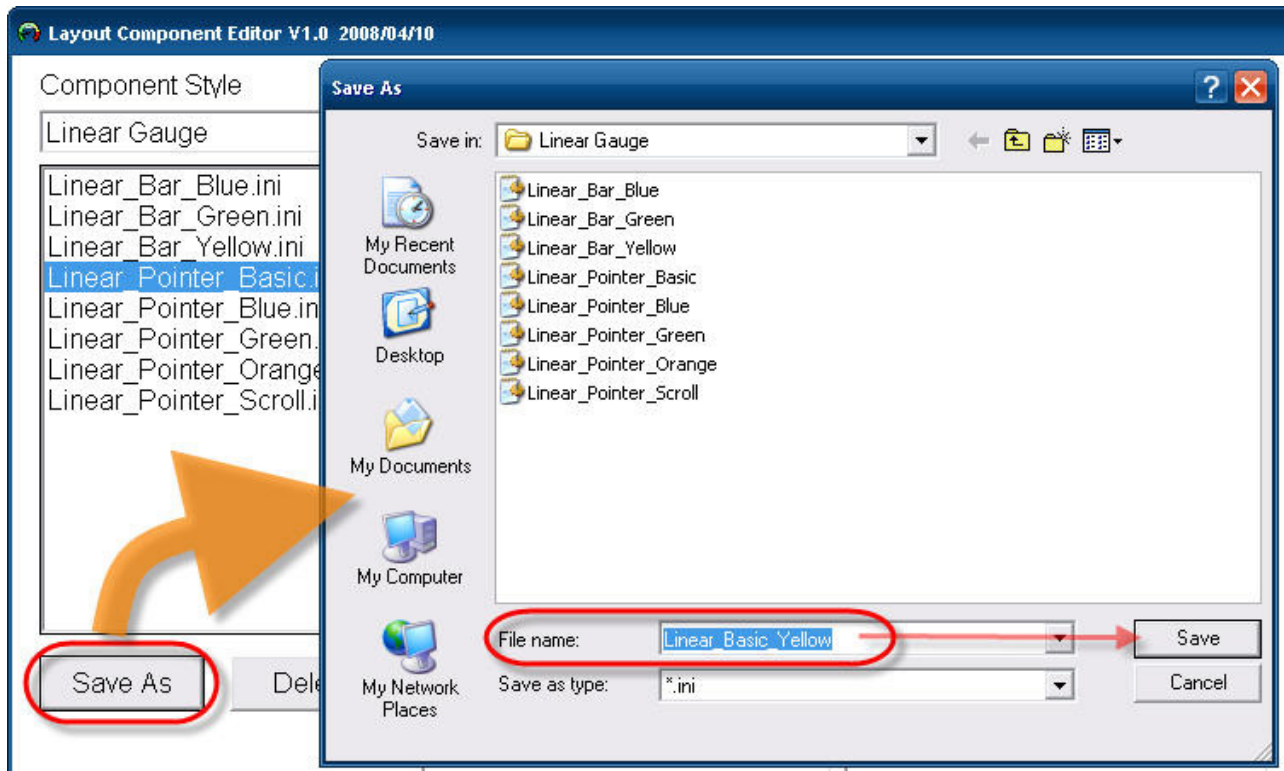


**Step2** : Select **Linear Gauge** component→ Click the **Back Color** button→ Select background color→ Click the **OK** button

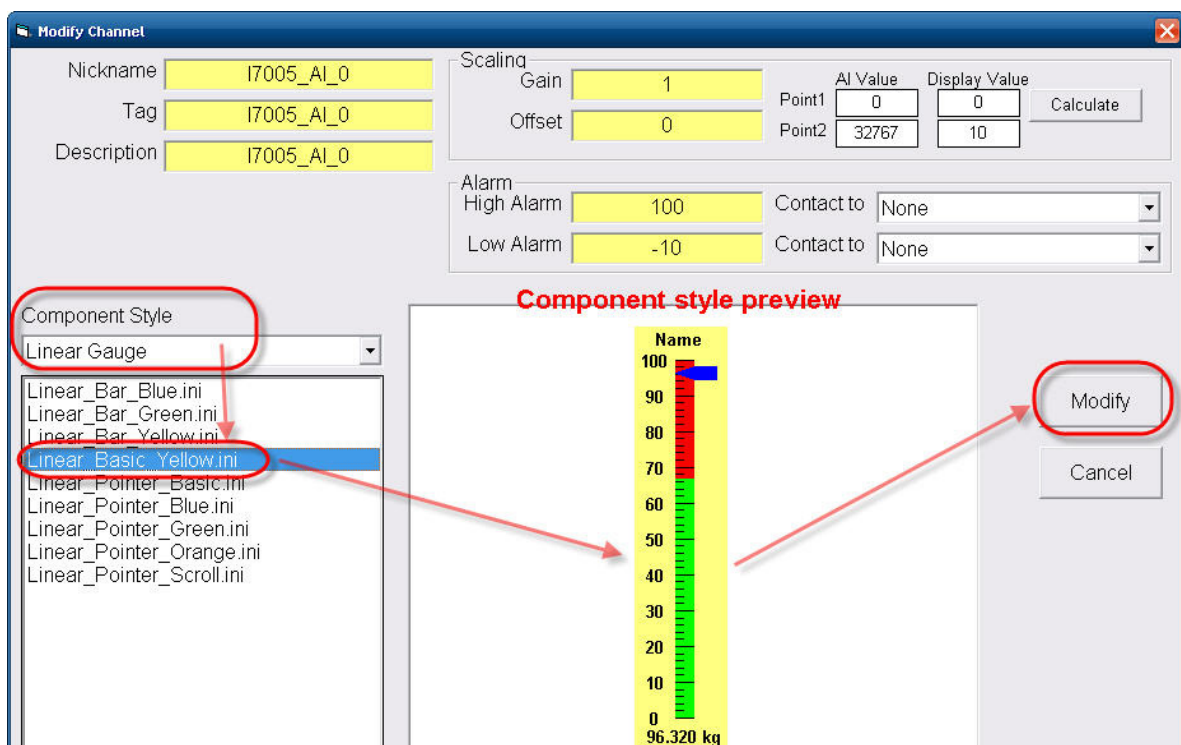


Classification	General Setting FAQ on EZ Data Logger				No.	1-005-05	
Author	Amber	version	1.0.0	Date	2012/05/11	Page	7/20

**Step3 :** Click the **Save As** button→ Enter the file name (Linear\_Basic\_Yellow) → **Save**.



**Step4 :** Select **Linear Gauge** component in the “Modify Channel” form→ Choose the new setting file (Linear\_Basic\_Yellow) you added from the menu→ Click the **Modify** button.



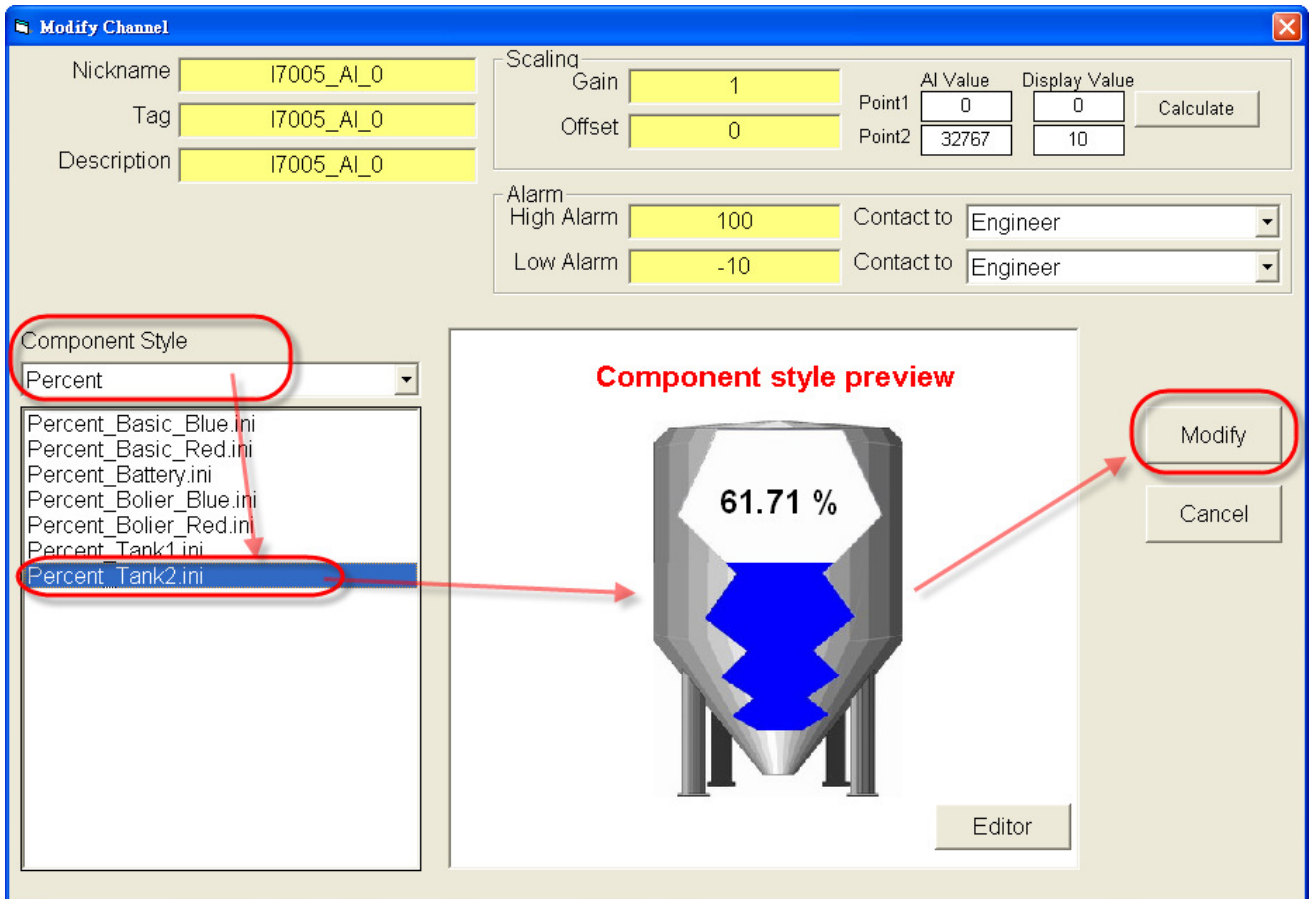
Classification	General Setting FAQ on EZ Data Logger				No.	1-005-05	
Author	Amber	version	1.0.0	Date	2012/05/11	Page	8/20

### III. Percent

You can set the “Percent” component for AI · VC channel to show module values or output AO values, and its background color/pictures · front color/pictures can be changed. You can select the default setting files from the component profile menu or customize it. Please refer to the following steps:

➤ **Select the default setting file from the menu**

Select **Percent** component in the “Modify Channel” form → From the menu choose **Percent\_Tank2.ini** → Click the **Modify** button.





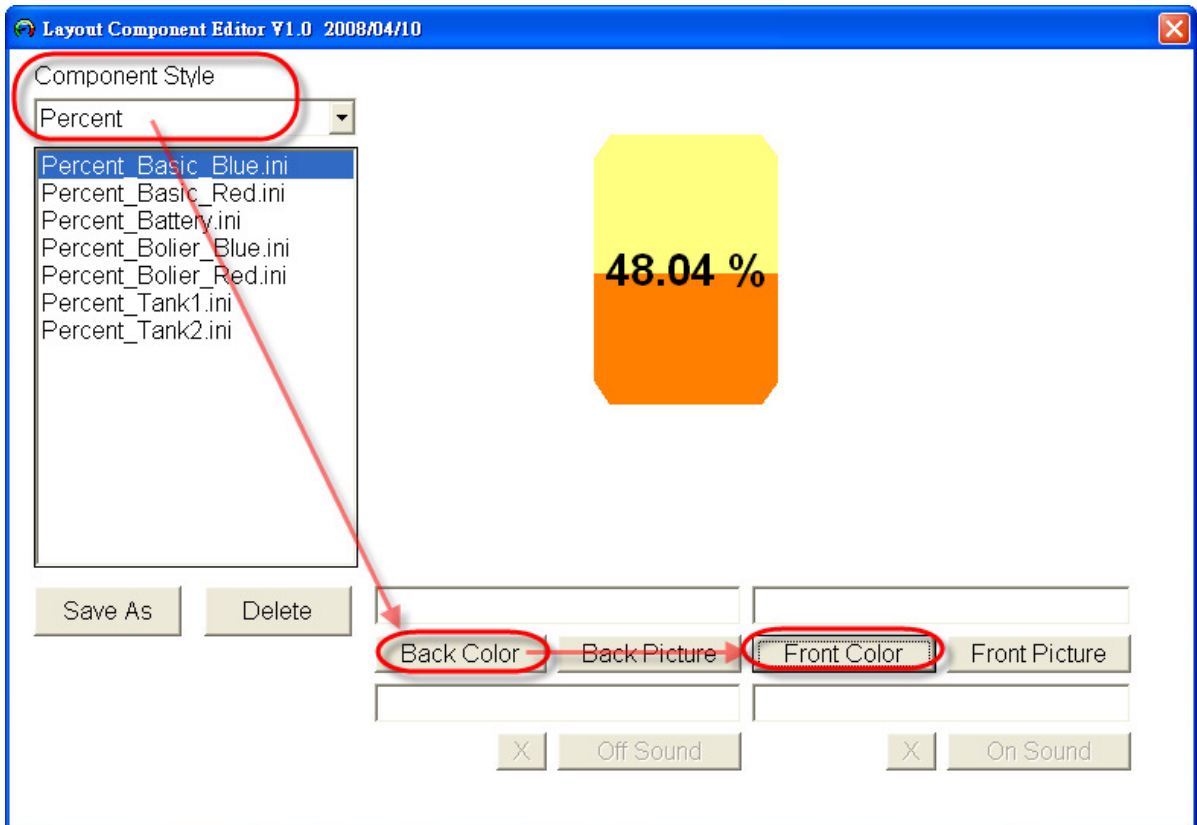
Classification	General Setting FAQ on EZ Data Logger				No.	1-005-05	
Author	Amber	version	1.0.0	Date	2012/05/11	Page	9/20

➤ **Customize the component**

**Step1** : Click the **Editor** button in the “Modify Channel” form.

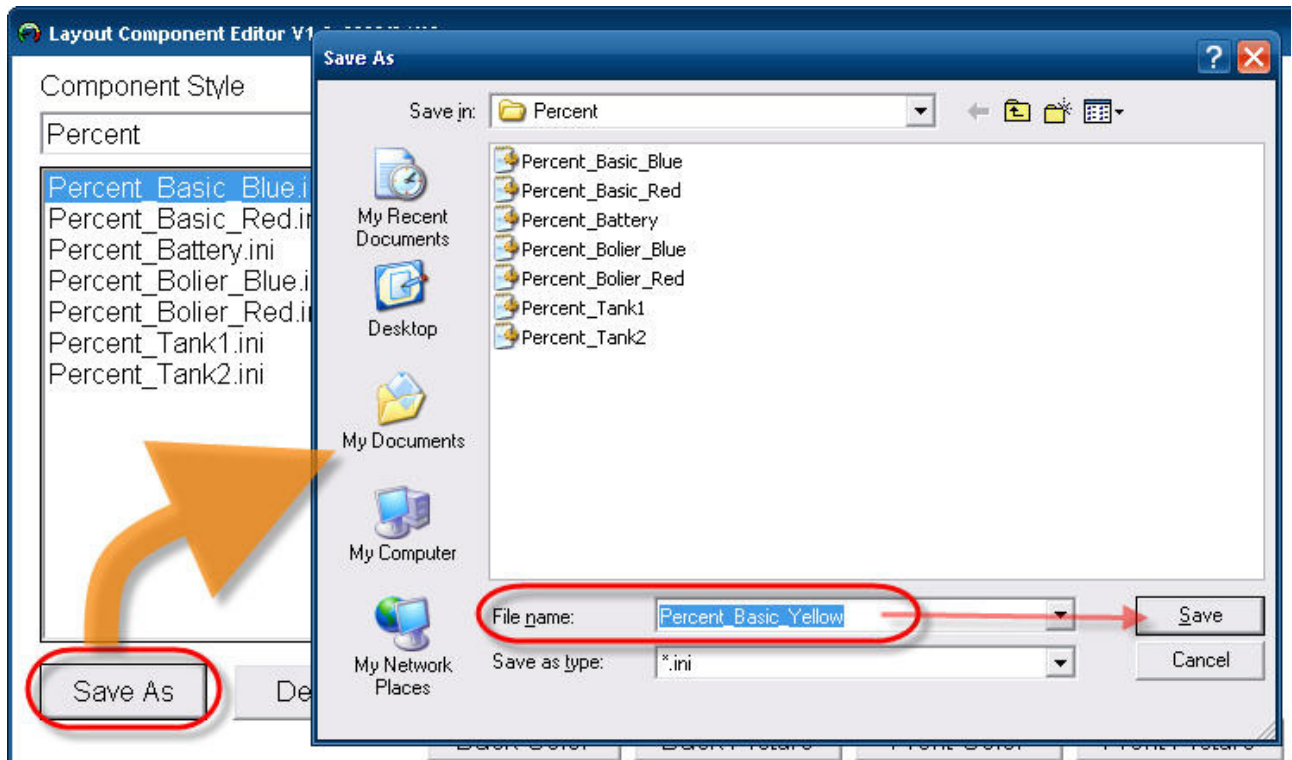


**Step2** : Select **Percent** component→ Click the **Back Color** button to select background color→ Click the **Front Color** button to select front color.

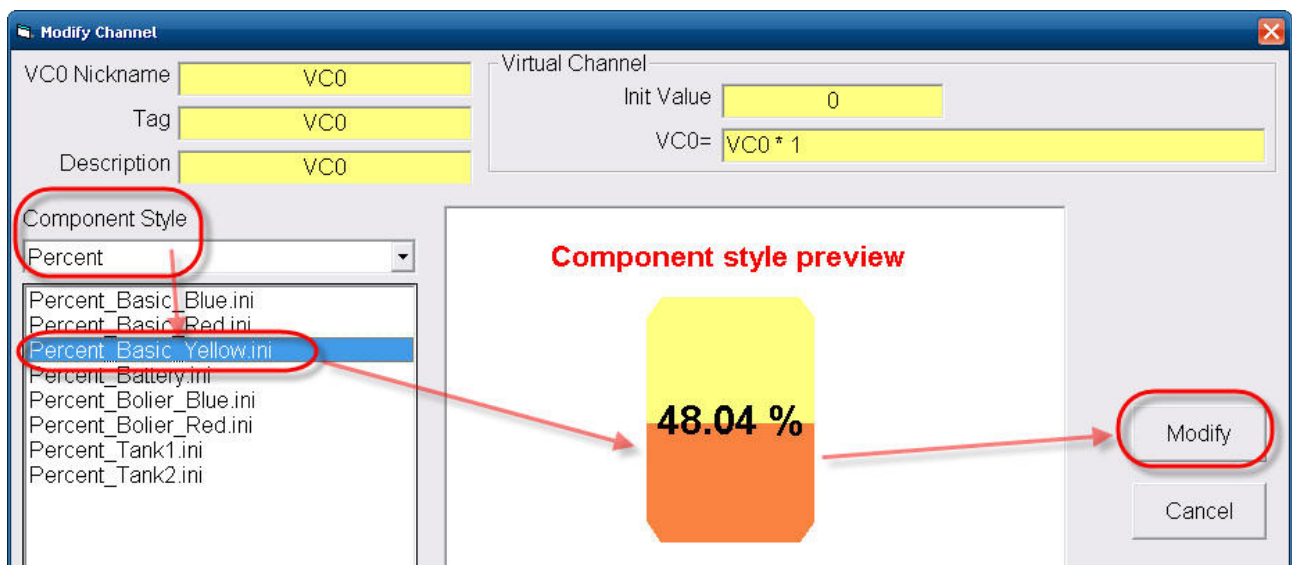


Classification	General Setting FAQ on EZ Data Logger				No.	1-005-05	
Author	Amber	version	1.0.0	Date	2012/05/11	Page	10/20

**Step3 :** Click the **Save As** button→ Enter the file name (Percent\_Basic\_Yellow) → **Save**.



**Step4 :** Select **Percent** component in the “Modify Channel” form→ Choose the new setting file (Percent\_Basic\_Yellow.ini) you added from the menu→ Click the **Modify** button.



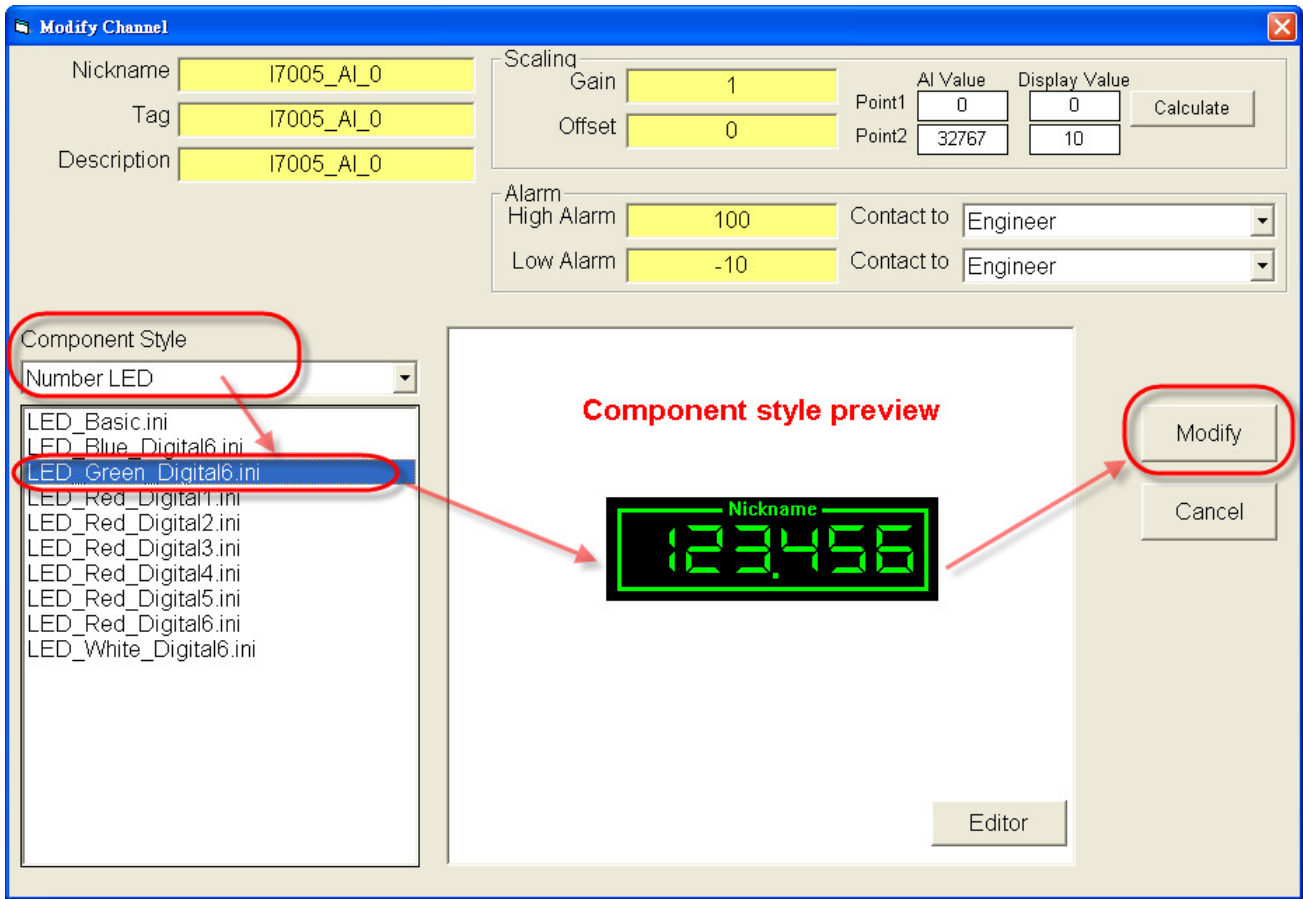
Classification	General Setting FAQ on EZ Data Logger				No.	1-005-05	
Author	Amber	version	1.0.0	Date	2012/05/11	Page	11/20

#### IV. Number LED

You can set the “Number LED” component for AI、AO、VC、Freq channel to show module values or output AO values, and its background color/pictures、number display color can be changed. You can select the default setting files from the component profile menu or customize it. Please refer to the following steps:

➤ **Select the default setting file from the menu**

Select **Number LED** component in the “Modify Channel” form → From the menu choose **LED\_Green\_Digital6.ini** → Click the **Modify** button.



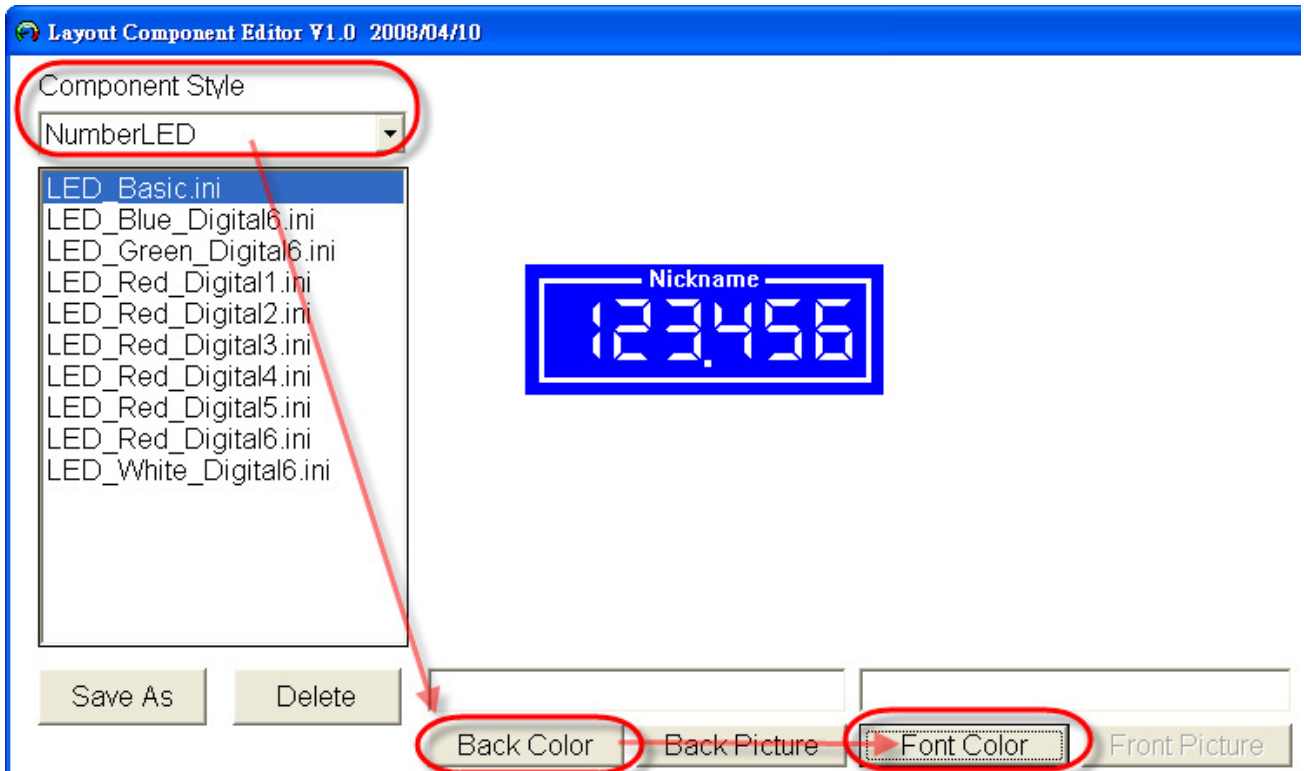
Classification	General Setting FAQ on EZ Data Logger				No.	1-005-05	
Author	Amber	version	1.0.0	Date	2012/05/11	Page	12/20

➤ **Customize the component**

**Step1** : Click the **Editor** button in the “Modify Channel” form.

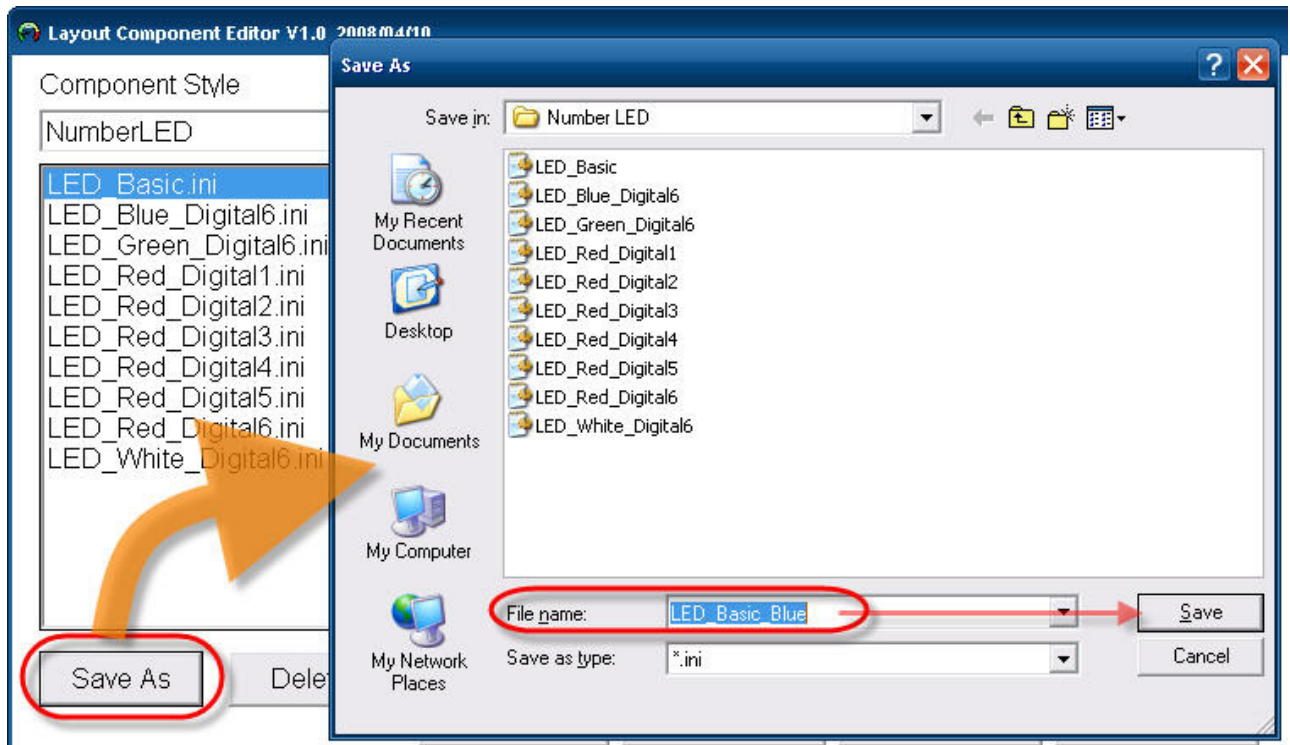


**Step2** : Select **Number LED** component→ Click the **Back Color** button to select background color→ Click the **Front Color** button to select front color.

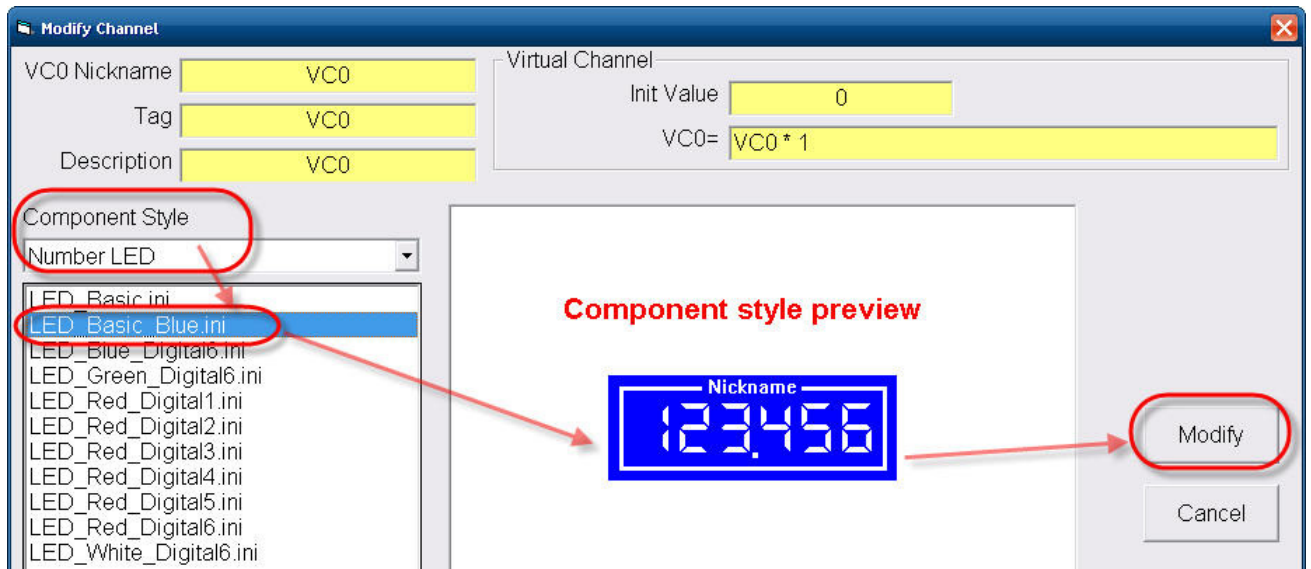


Classification	General Setting FAQ on EZ Data Logger				No.	1-005-05	
Author	Amber	version	1.0.0	Date	2012/05/11	Page	13/20

**Step3 :** Click the **Save As** button→ Enter the file name (LED\_Basic\_Blue) → **Save**.



**Step4 :** Select **Number LED** component in the “Modify Channel” form→ Choose the new setting file (LED\_Basic\_Blue.ini) you added from the menu→ Click the **Modify** button.



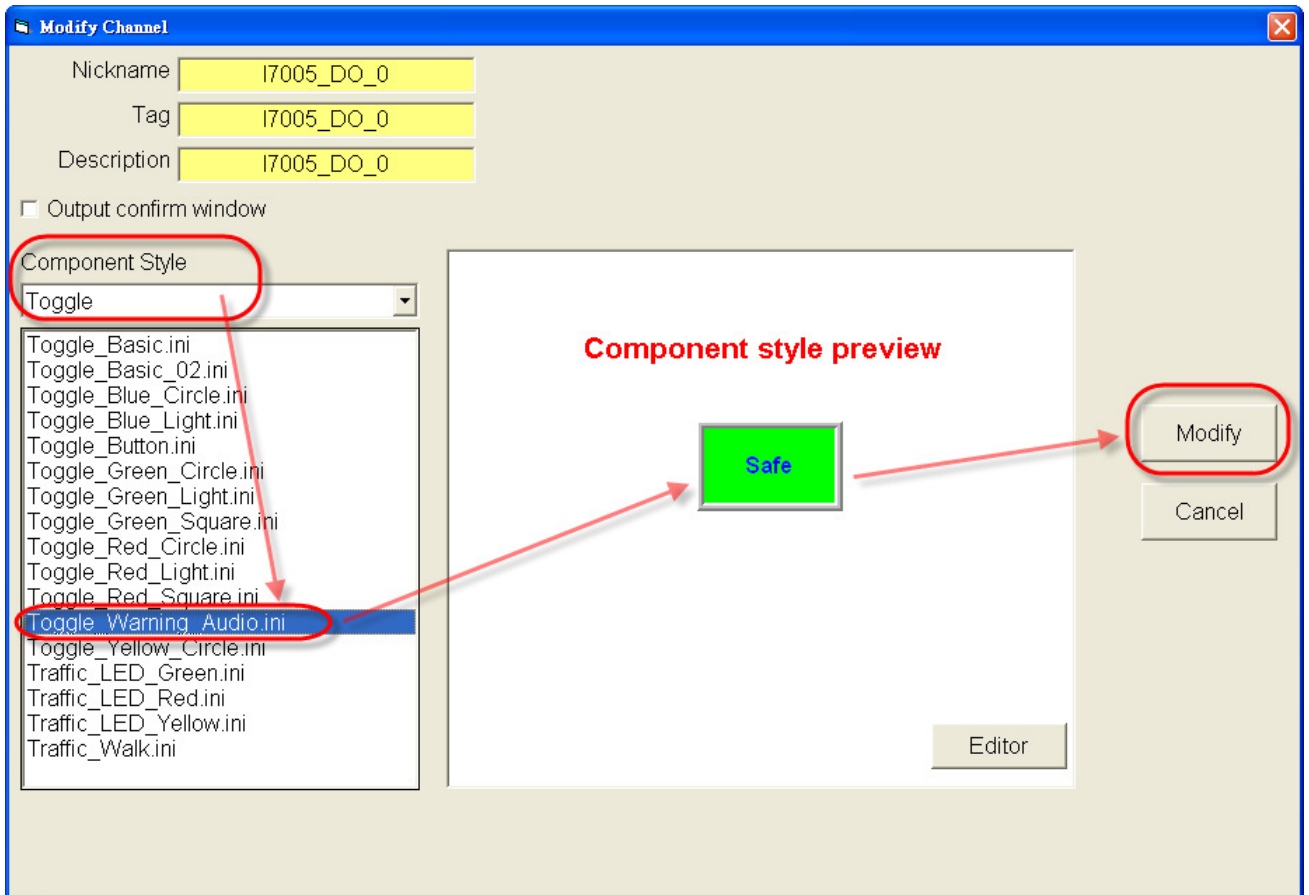
Classification	General Setting FAQ on EZ Data Logger				No.	1-005-05	
Author	Amber	version	1.0.0	Date	2012/05/11	Page	14/20

## V. Toggle

You can set the “Toggle” component for DI · DO · VC channel to show module values or output AO values, and its background color/pictures · front color/pictures can be changed. You can select the default setting files from the component profile menu or customize it. Please refer to the following steps:

➤ **Select the default setting file from the menu**

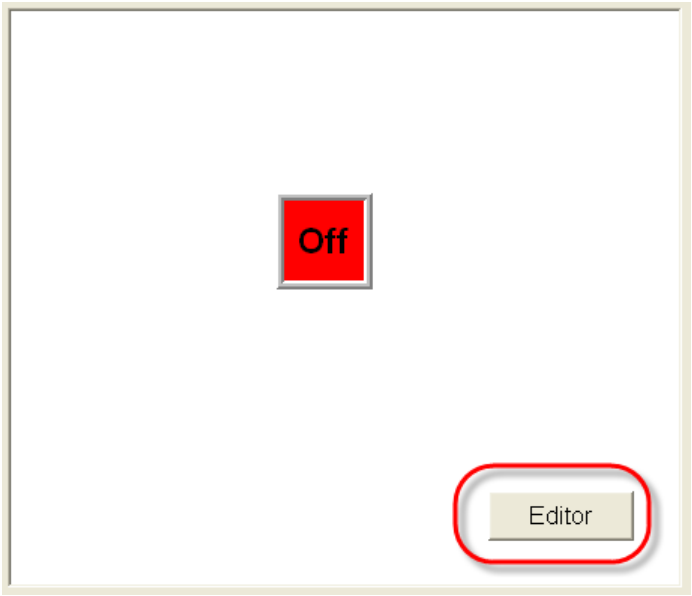
Select **Toggle** component in the “Modify Channel” form → From the menu choose **Toggle\_Warning\_Audio.ini** → Click the **Modify** button.



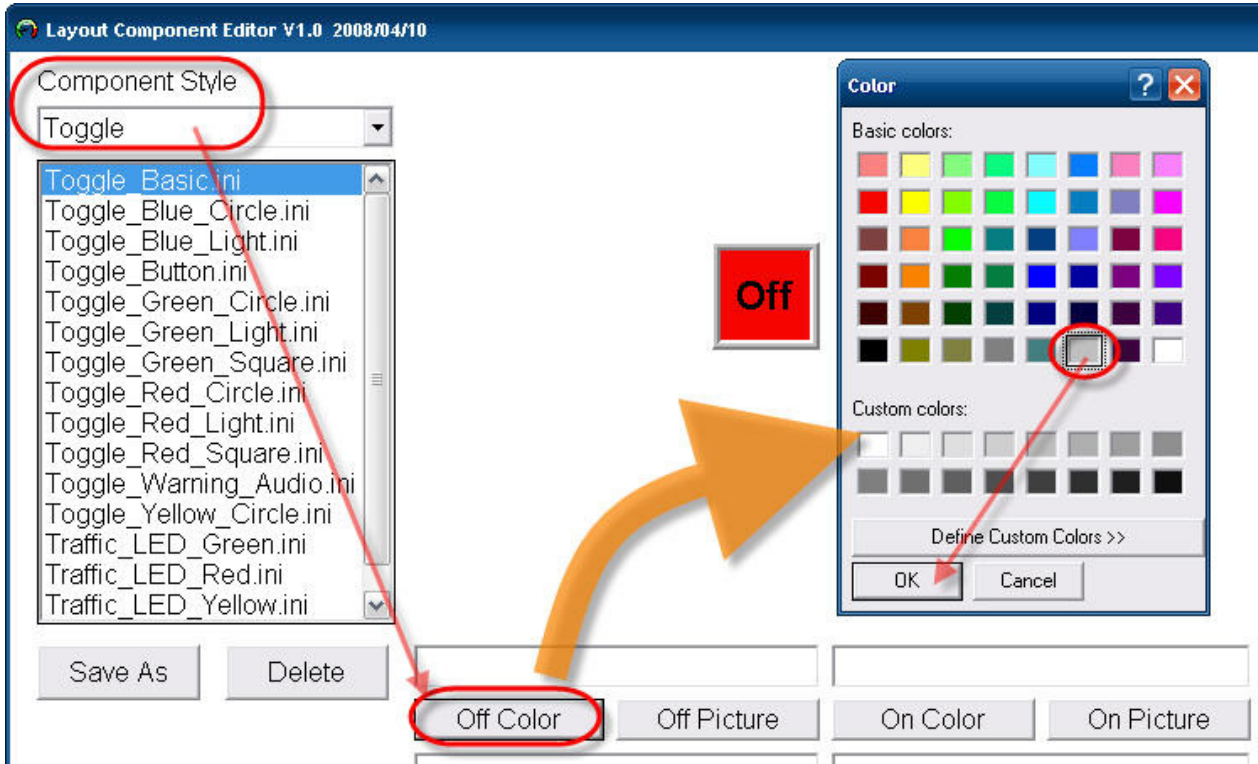
Classification	General Setting FAQ on EZ Data Logger				No.	1-005-05	
Author	Amber	version	1.0.0	Date	2012/05/11	Page	15/20

➤ **Customize the component**

**Step1** : Click the **Editor** button in the “Modify Channel” form.



**Step2** : Select **Toggle** component→ Click the **Off Color** button to select the background color when DO=0. .



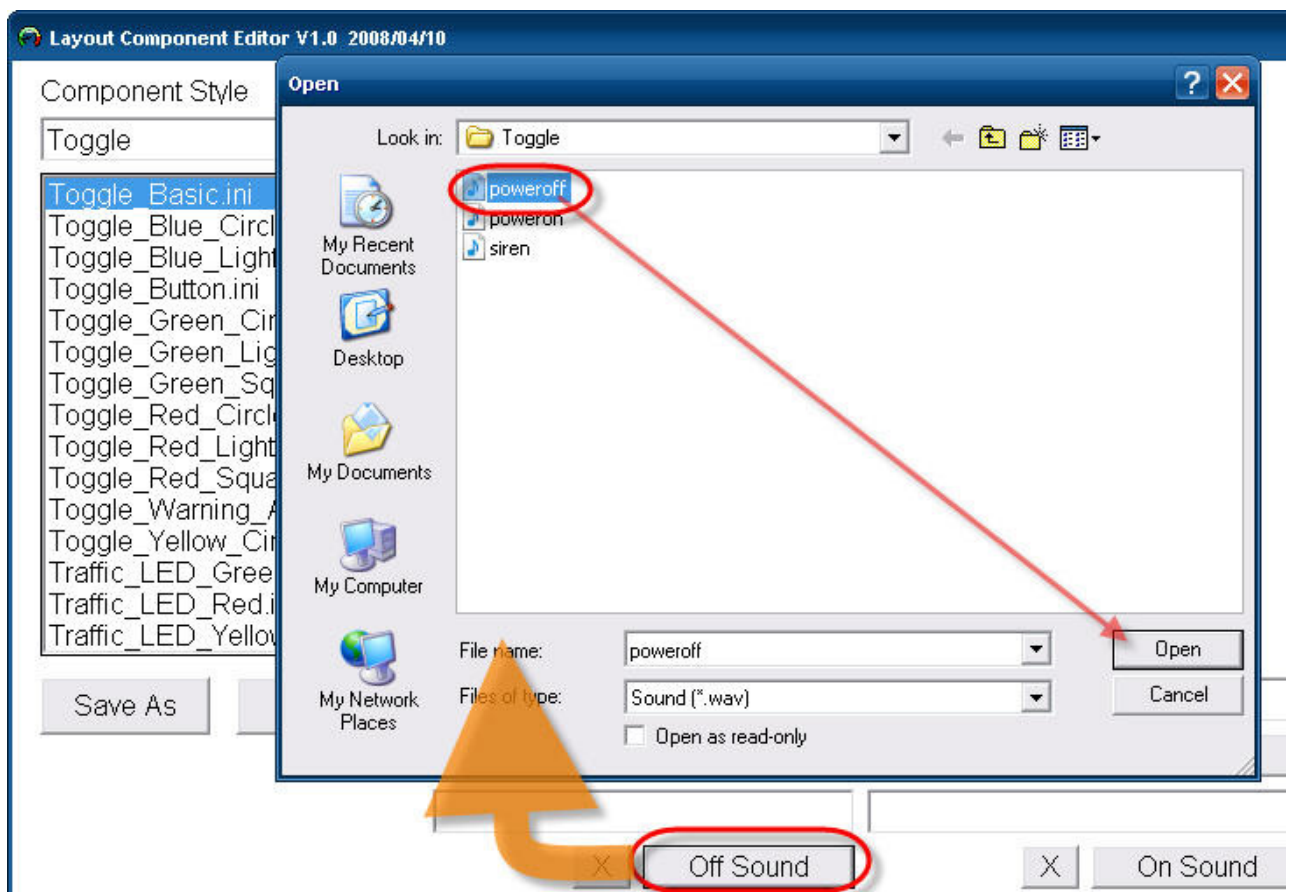
Classification	General Setting FAQ on EZ Data Logger				No.	1-005-05	
Author	Amber	version	1.0.0	Date	2012/05/11	Page	16/20

**Step3 :** In the popup “Off Text” form please enter **Stop**.



**Step4 :** Click the **On Color** button to select the background color when DO=1 → In the popup “On Text” form please enter **Running**.

**Step5 :** Click the **Off Sound** button to select the audio sound (poweroff.wav) when DO=0.

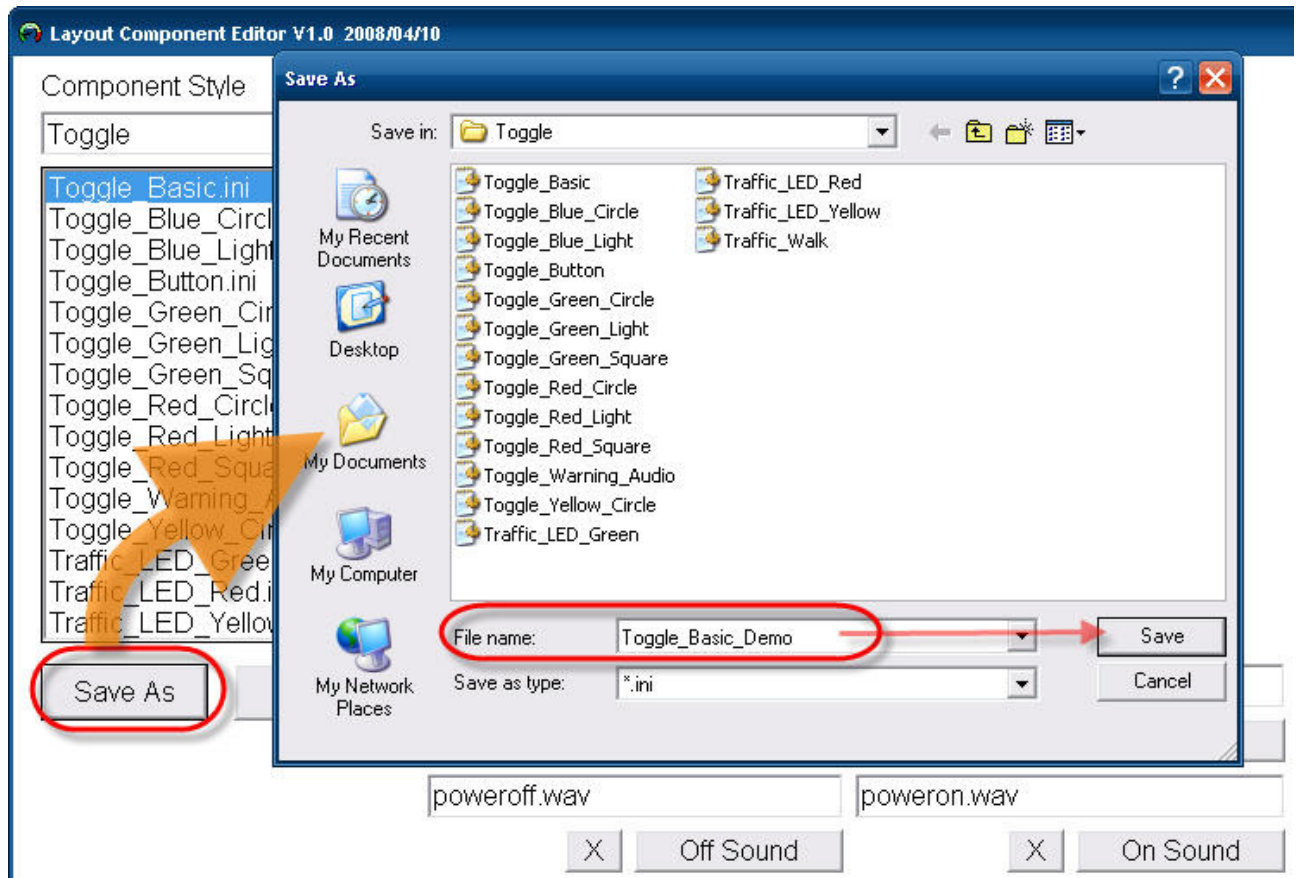


**Step6 :** Click the **On Sound** button to select the audio sound (poweron.wav) when DO=1.

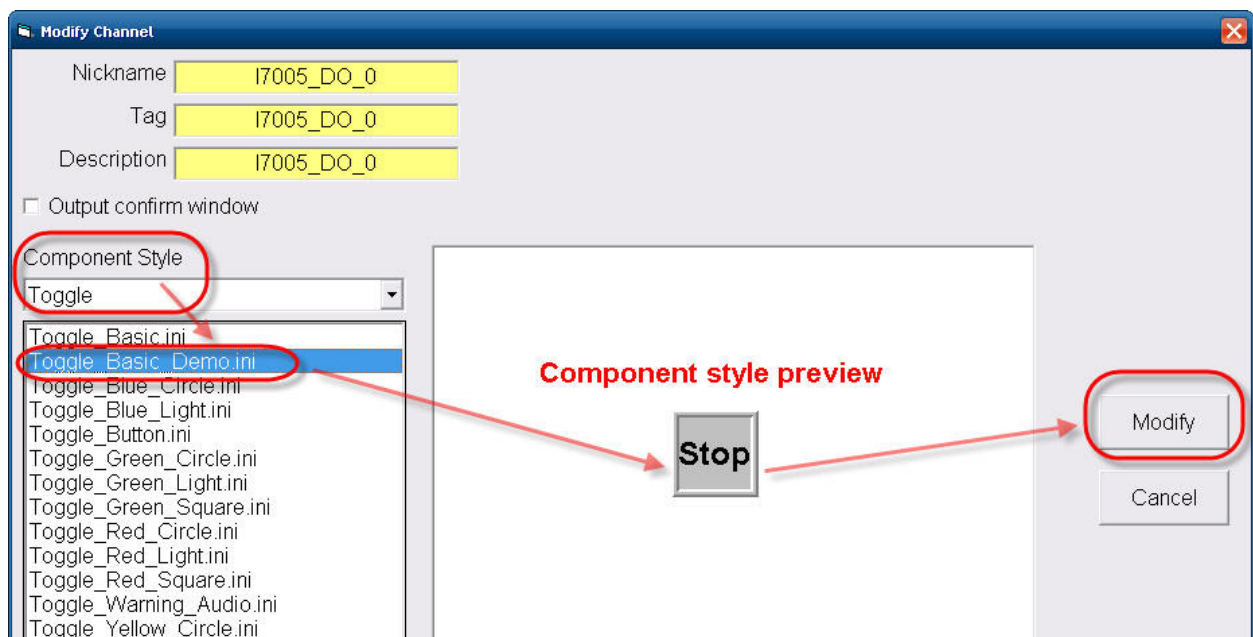


Classification	General Setting FAQ on EZ Data Logger				No.	1-005-05	
Author	Amber	version	1.0.0	Date	2012/05/11	Page	17/20

**Step7** : Click the **Save As** button→ Enter the file name (Toggle\_Basic\_Demo) → **Save**.



**Step8** : Select **Toggle** component in the “Modify Channel” form→ Choose the new setting file (Toggle\_Basic\_Demo.ini) you added from the menu→ Click the **Modify** button.



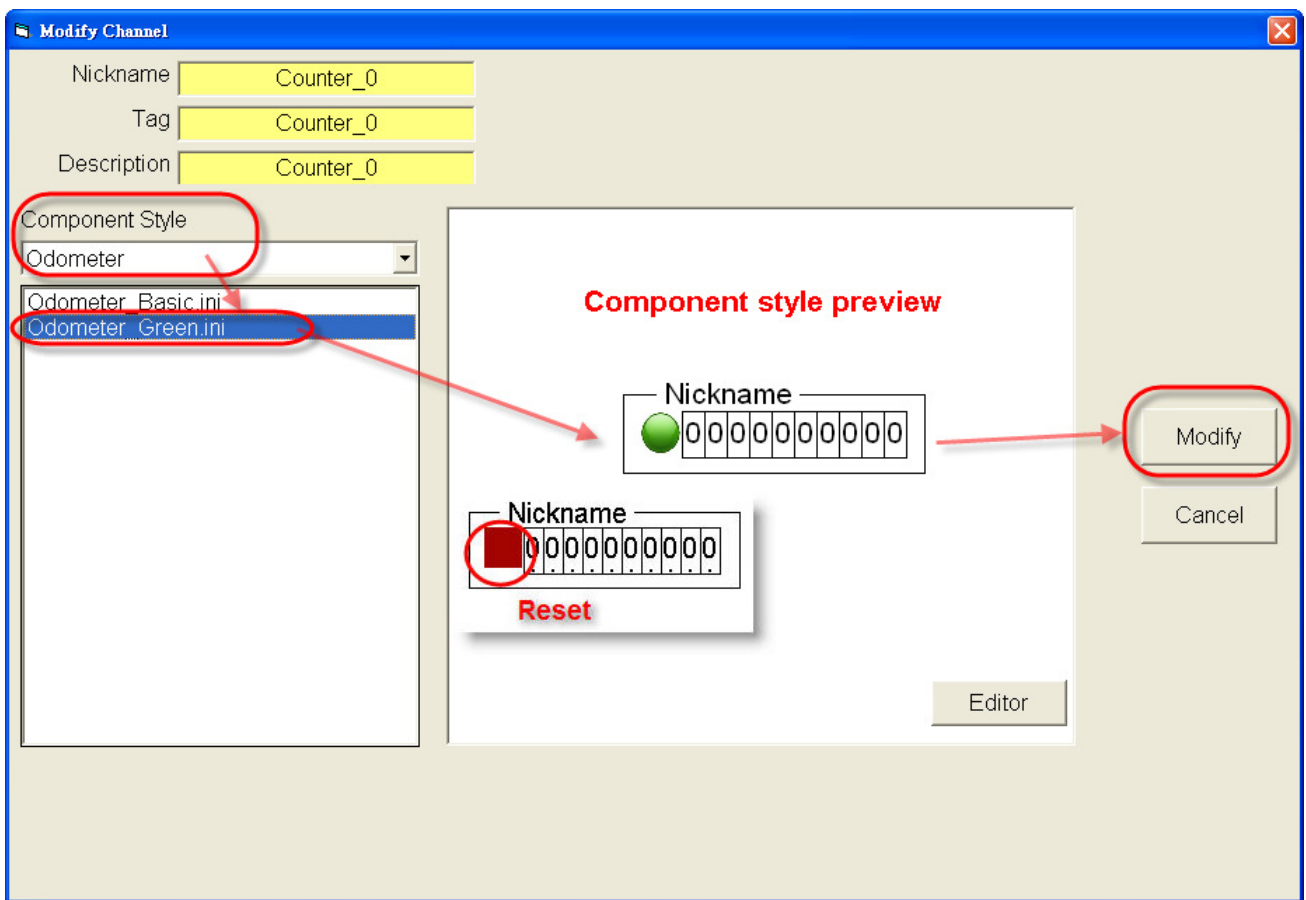
Classification	General Setting FAQ on EZ Data Logger				No.	1-005-05	
Author	Amber	version	1.0.0	Date	2012/05/11	Page	18/20

## VI. OdoMeter

You can set the “OdoMeter” component for Counter channel to show count values, and change the color/pictures of its “Reset” button. You can select the default setting files from the component profile menu or customize it. Please refer to the following steps:

➤ **Select the default setting file from the menu**

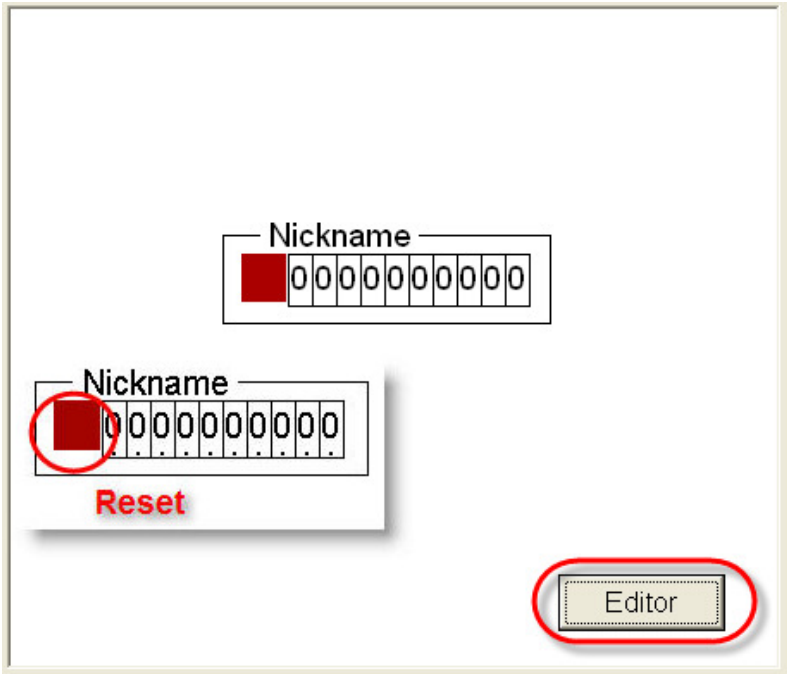
Select **OdoMeter** component in the “Modify Channel” form→ From the menu choose **OdoMeter\_Green.ini**→ Click the **Modify** button.



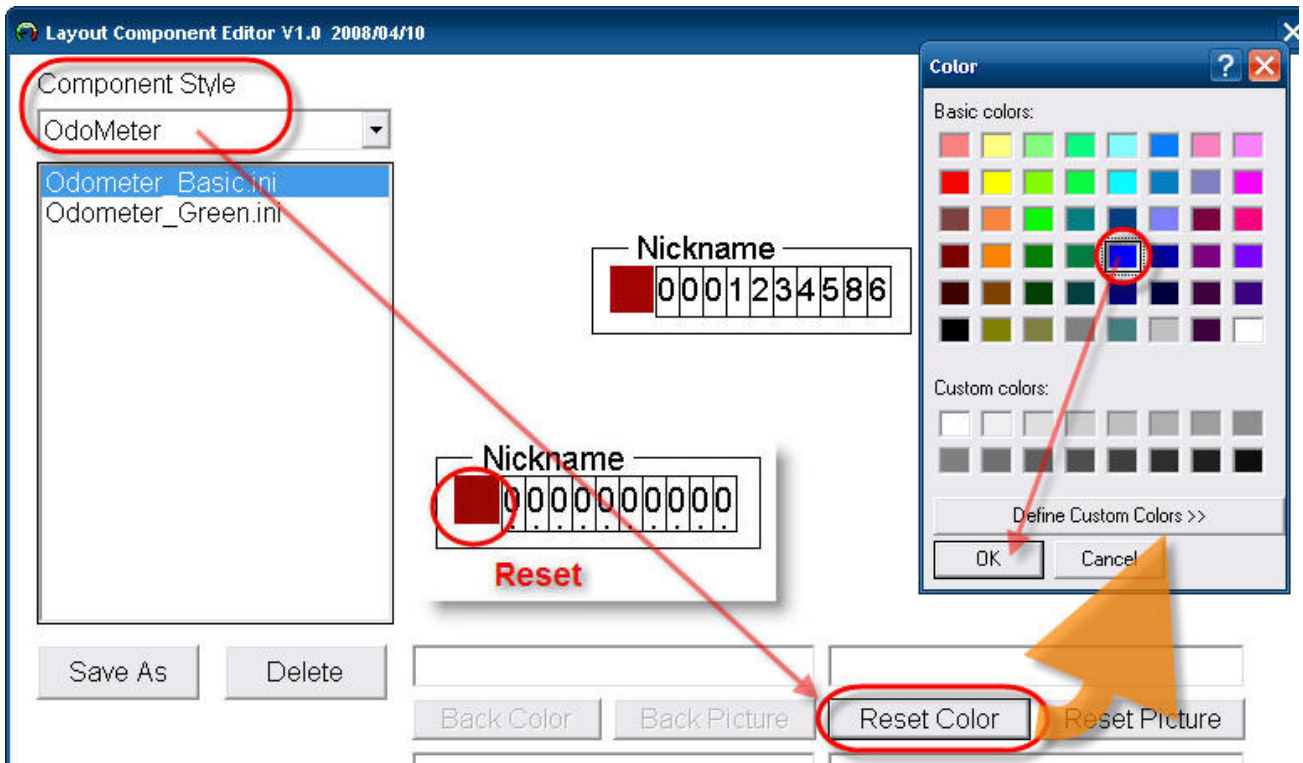
Classification	General Setting FAQ on EZ Data Logger				No.	1-005-05	
Author	Amber	version	1.0.0	Date	2012/05/11	Page	19/20

➤ **Customize the component**

**Step1** : Click the **Editor** button in the “Modify Channel” form.

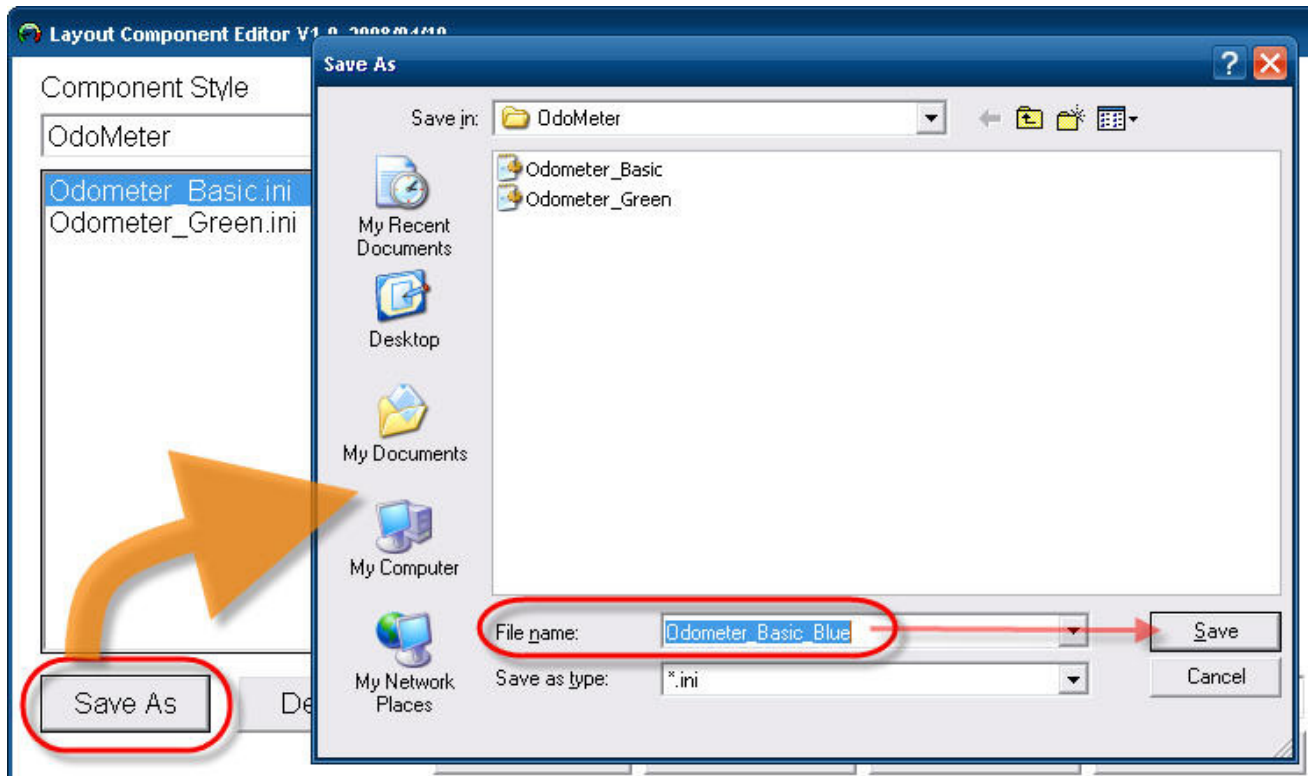


**Step2** : Select **OdoMeter** component→ Click the **Reset Color** button to select background color of the reset button→ **OK**.



Classification	General Setting FAQ on EZ Data Logger				No.	1-005-05	
Author	Amber	version	1.0.0	Date	2012/05/11	Page	20/20

**Step3 :** Click the **Save As** button→ Enter the file name (Odometer\_Basic\_Blue) → **Save**.



**Step4 :** Select **OdoMeter** component in the “Modify Channel” form→ Choose the new setting file (Odometer\_Basic\_Blue.ini) you added from the menu→ Click the **Modify** button.

